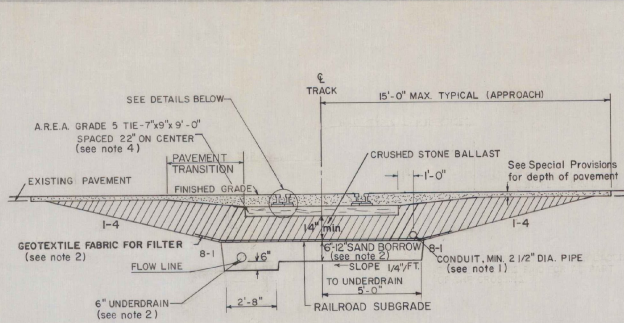
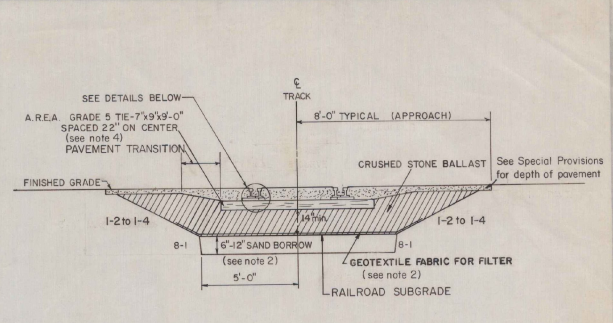


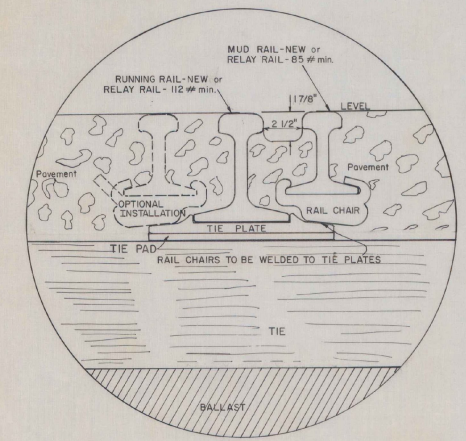
PROFILE OF RAILROAD CROSSING ALONG TRACKS



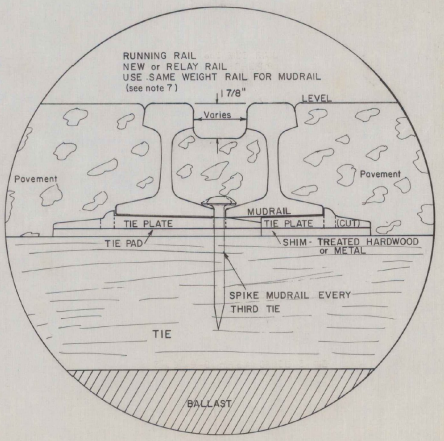
TYPICAL FOR RAILROAD CROSSING - PAVED HIGHWAY



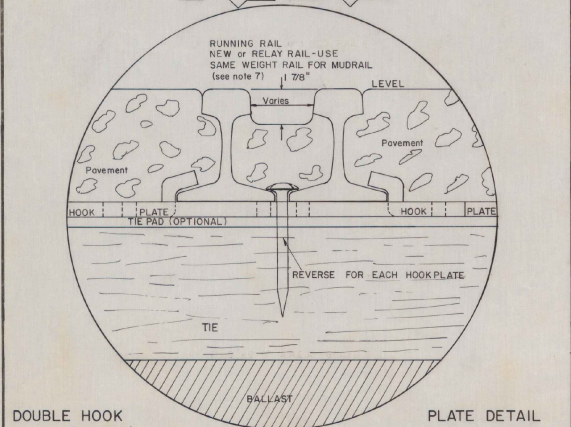
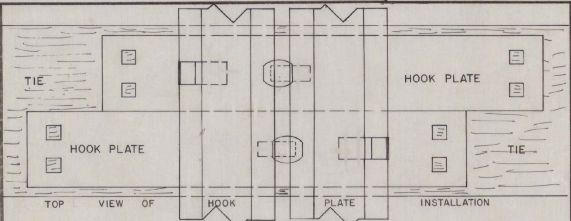
TYPICAL FOR RAILROAD CROSSING - GRAVEL HIGHWAY



RAIL CHAIR DETAIL



CUT TIE PLATE DETAIL



DOUBLE HOOK

PLATE DETAIL

-GENERAL NOTES-

- Signal conduit to be installed in locations directed by the Engineer. Payment for item to be included in crossing linear foot cost.
- The use of underdrain, sand borrow and geotextile fabric shall be determined upon inspection of field conditions by the Railroad and the Engineer.
- All rail joints, including mudrail joints, within the crossing area and 30'-0" beyond will be cropped and Thermitic welded in accordance with the latest revision of A.R.E.A. Specifications.
- New ties shall be used in crossing area as shown. Ties in approach areas to be replaced as recommended by the Railroad and approved by the Engineer.
- Tie plates shall be new or relay plates manufactured for the rail used. Plates shall be inspected and approved by the Railroad and the Engineer.
- Ballast in approach areas shall extend 6" beyond end of ties and sloped 1-2 to the roadbed. (See detail)
- Rail weights shall be determined by the Railroad and approved by the Engineer.
- Manufacturers specifications shall be followed where pre-fabricated crossing surfaces are to be installed.
- Modifications to railroad approach areas may be necessary as local conditions warrant.

REVISIONS / CORRECTIONS
4/3/86 Revised to conform to 1986
Specifications

APPROVED:

[Signature]
Director of Engineering and Construction

[Signature]
Chief of Design

[Signature]
Design Engineer

DATE: Nov 25 1980

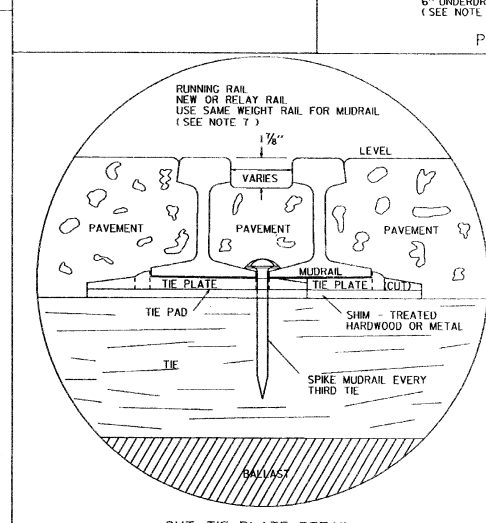
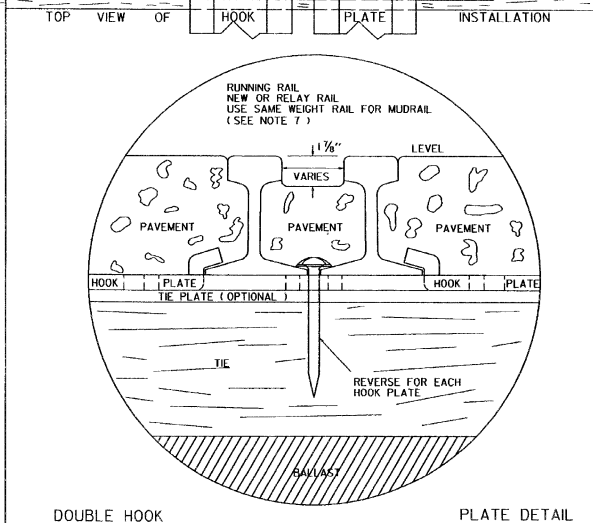
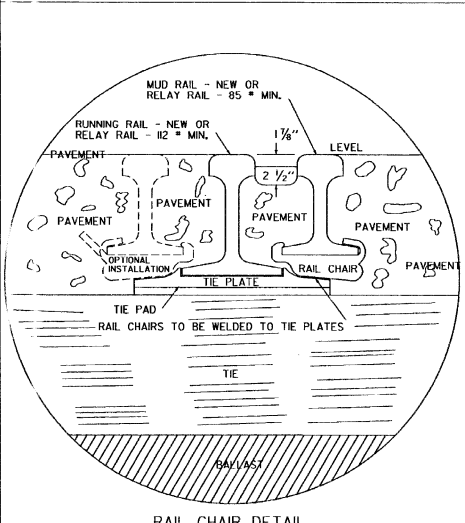
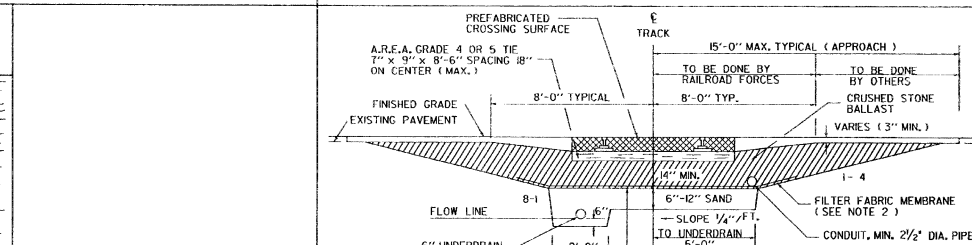
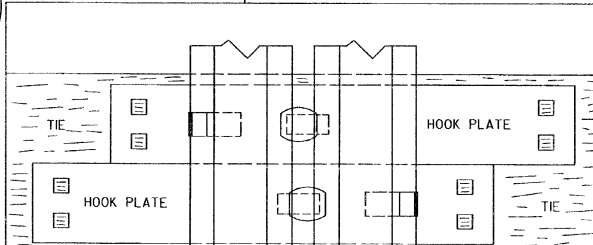
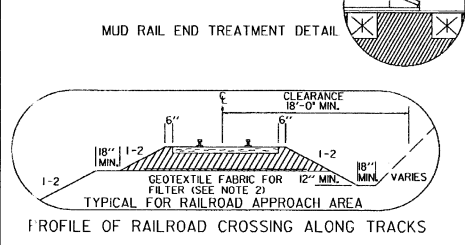
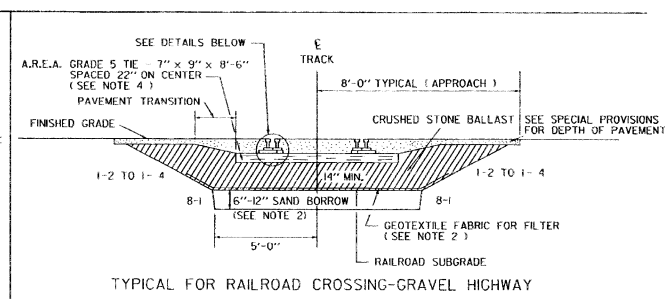
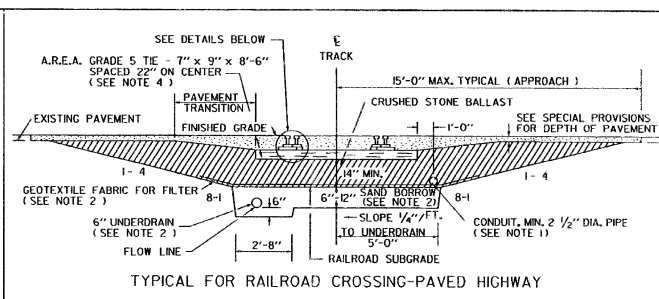
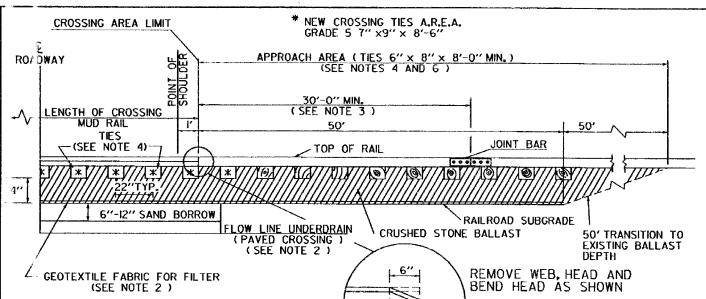
RAIL-HIGHWAY CROSSING STANDARDS

GRA Paved Crossing for Gravel or Paved Highways



STANDARD

RR-1



- GENERAL NOTES
1. SIGNAL CONDUIT TO BE INSTALLED IN LOCATIONS DIRECTED BY THE ENGINEER. PAYMENT FOR ITEM TO BE INCLUDED IN CROSSING LINEAR FOOT COST.
 2. THE USE OF UNDERDRAIN, SAND BORROW AND GEOTEXTILE FABRIC SHALL BE DETERMINED UPON INSPECTION BY FIELD CONDITIONS BY THE RAILROAD AND THE ENGINEER.
 3. ALL RAIL JOINTS, INCLUDING MUDRAIL JOINTS, WITHIN THE CROSSING AREA AND 30'-0" BEYOND WILL BE GROUPED AND THERMITE WELDED IN ACCORDANCE WITH THE LATEST REVISION OF A.R.E.A. SPECIFICATIONS.
 4. NEW TIES SHALL BE USED IN CROSSING AREA AS SHOWN. TIES IN APPROACH AREAS TO BE REPLACED AS RECOMMENDED BY THE RAILROAD AND APPROVED BY THE ENGINEER.
 5. TIE PLATES SHALL BE NEW OR RELAY PLATES MANUFACTURED FOR THE RAIL USED. PLATES SHALL BE INSPECTED AND APPROVED BY THE RAILROAD AND THE ENGINEER.
 6. BALLAST IN APPROACH AREAS SHALL EXTEND 6" BEYOND END OF TIES AND SLOPED 1:2 TO THE ROADBED. (SEE DETAIL.)
 7. RAIL WEIGHTS SHALL BE DETERMINED BY THE RAILROAD AND APPROVED BY THE ENGINEER.
 8. TYPE AND DESIGN OF PREFABRICATED SURFACE SHALL RECEIVE APPROVAL OF THE STATE.
 9. MANUFACTURERS SPECIFICATIONS SHALL BE FOLLOWED WHERE PRE-FABRICATED CROSSING SURFACES ARE TO BE INSTALLED.
 10. MODIFICATIONS TO RAILROAD APPROACH AREAS MAY BE NECESSARY AS LOCAL CONDITIONS WARRANT.
 11. CONTINUOUS WELDED RAIL THROUGH CROSSING #10 A MINIMUM OF 30 FEET EACH SIDE OF CROSSING SHOULDER.
 12. WELDED JOINTS WILL BE GROUND TO CONFORM TO THE SHAPE OF THE RAIL ON GAUGE AND FIELD SIDES.

REVISIONS AND CORRECTIONS

NO V. 25, 1980 - ORIGINAL APPROVAL DATE

M/R. 12, 1987 - SHEET UPDATED

JUNE 1, 1994 - REISSUED, WITHOUT CHANGE, UNDER NEW SIGNATURE.

APPROVED

APPROVED FOR THIS PROJECT AND/OR DESIGN IMPLEMENTATION, PERVA FINAL APPROVAL PENDING.

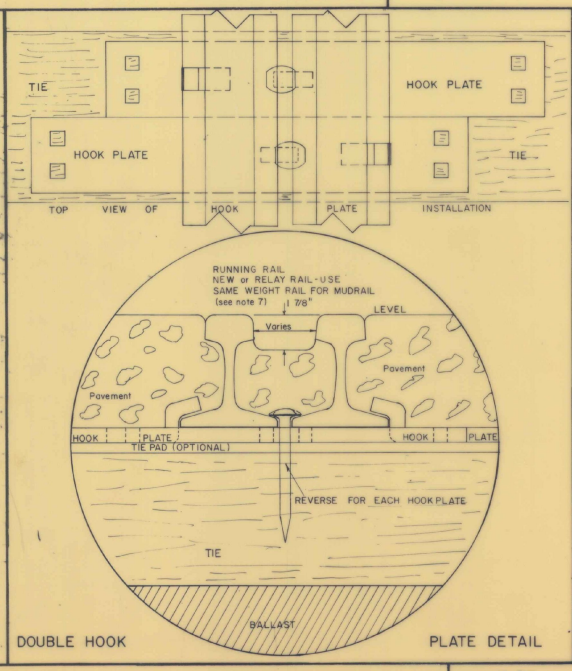
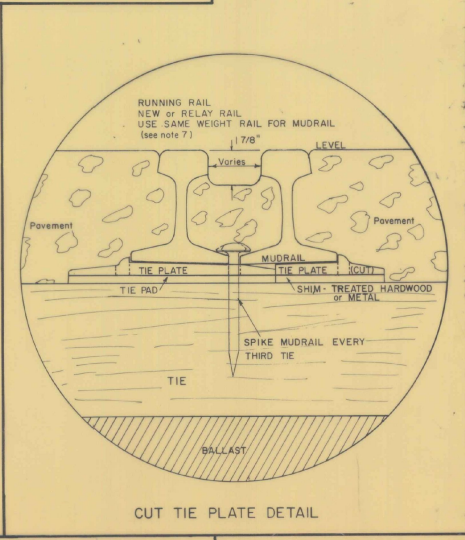
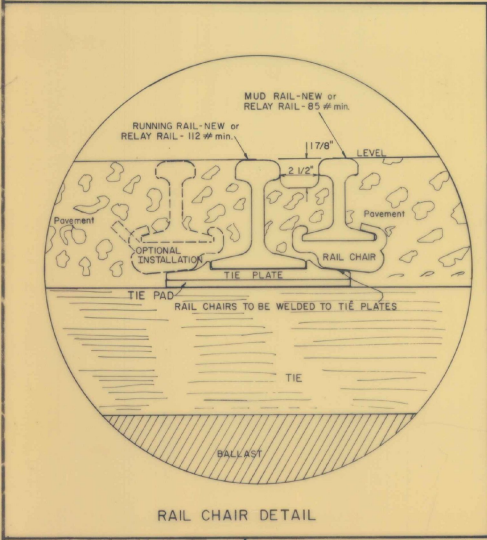
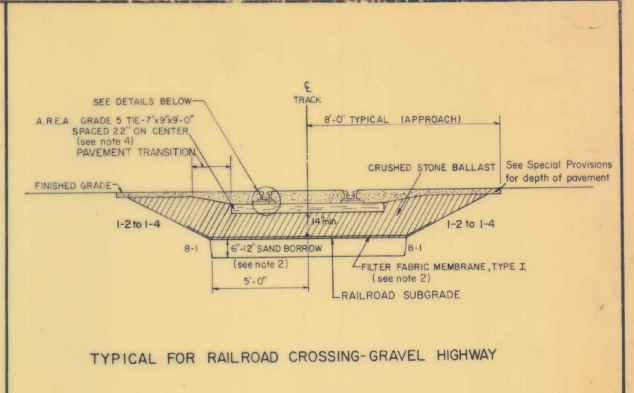
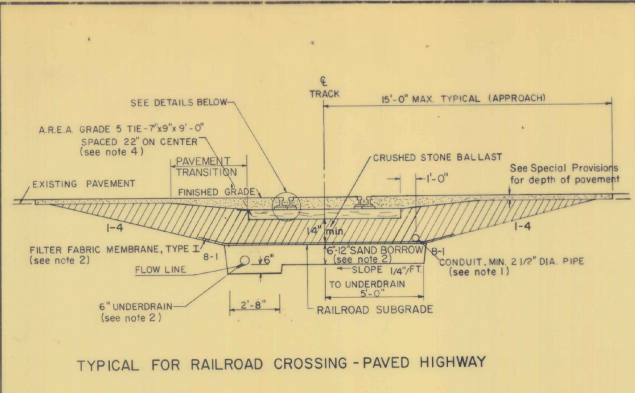
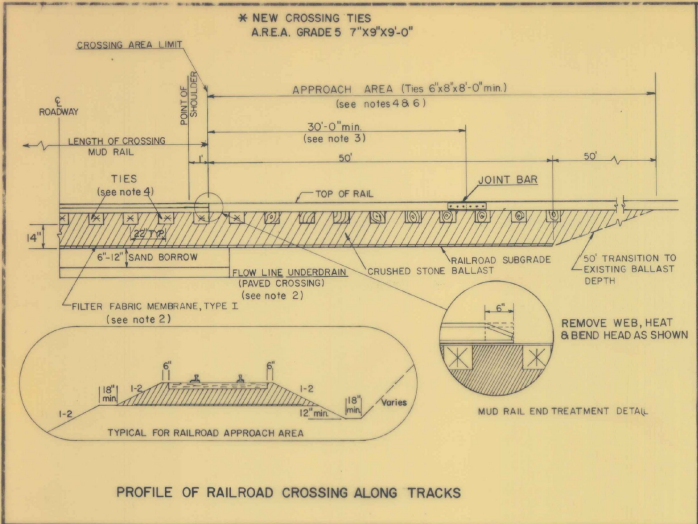
W. B. ...

DIRECTOR OF RAIL, AIR AND PUBLIC TRANSIT

RAIL - HIGHWAY CROSSING STANDARDS

PAVED CROSSING FOR GRAVEL OR PAVED HIGHWAYS





- GENERAL NOTES -**
- Signal conduit to be installed in locations directed by the Engineer. Payment for item to be included in crossing linear foot cost.
 - The use of underdrain, sand borrow and filter fabric membrane shall be determined upon inspection of field conditions by the Railroad and the Engineer.
 - All rail joints, including mudrail joints, within the crossing area and 30'-0" beyond will be cropped and Thermite welded in accordance with the latest revision of A.R.E.A. Specifications.
 - New ties shall be used in crossing area as shown. Ties in approach areas to be replaced as recommended by the Railroad and approved by the Engineer.
 - Tie plates shall be new or relay plates manufactured for the rail used. Plates shall be inspected and approved by the Railroad and the Engineer.
 - Ballast in approach areas shall extend 6" beyond end of ties and sloped 1:2 to the roadbed. (See detail)
 - Rail weights shall be determined by the Railroad and approved by the Engineer.
 - Manufacturers specifications shall be followed where pre-fabricated crossing surfaces are to be installed.
 - Modifications to railroad approach areas may be necessary as local conditions warrant.

REVISIONS / CORRECTIONS

APPROVED: _____ DATE: 12-25-1986

Director of Engineering and Construction
Chief of Design
Design Engineer

RAIL-HIGHWAY CROSSING STANDARDS
GRAVEL PAVED CROSSING FOR GRAVEL OR PAVED HIGHWAYS



STANDARD
RR-1