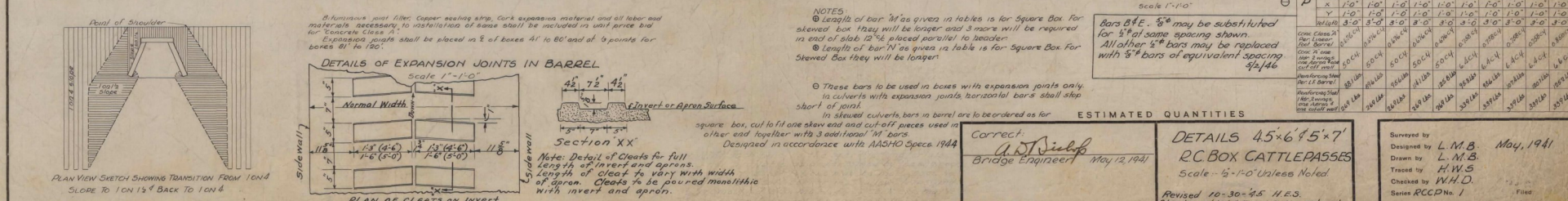
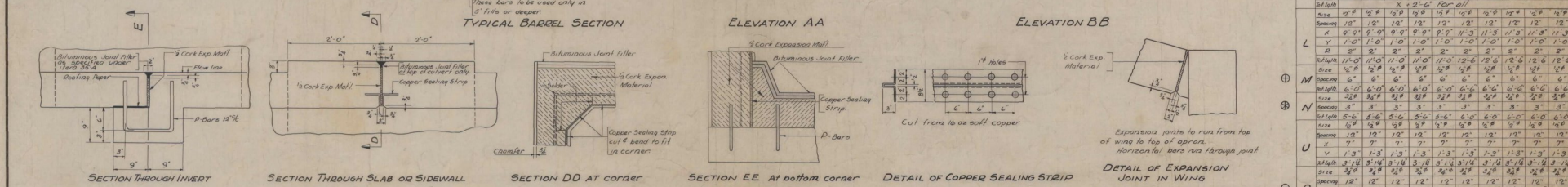
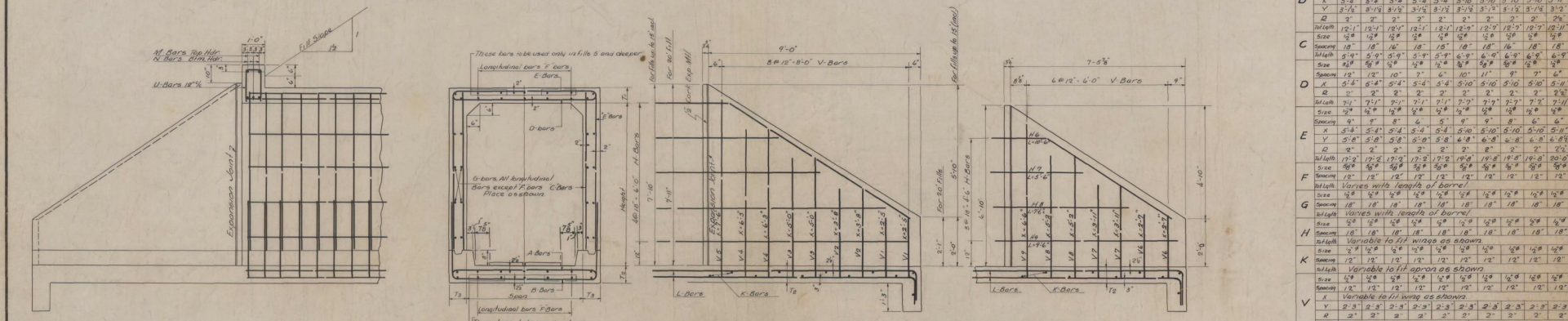
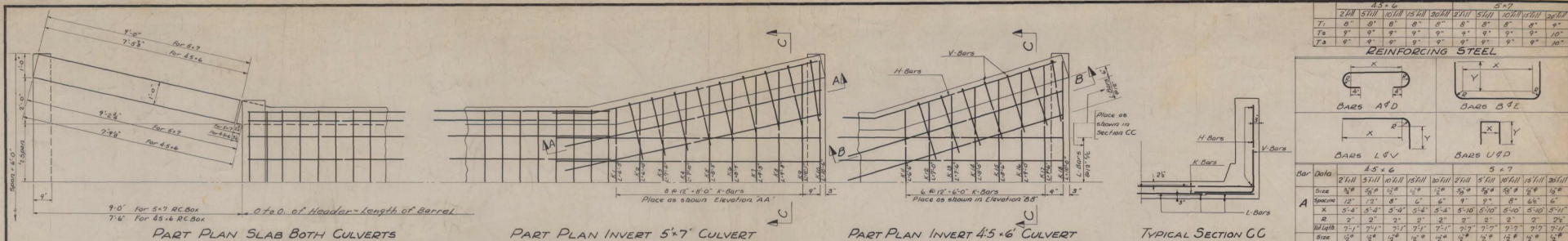
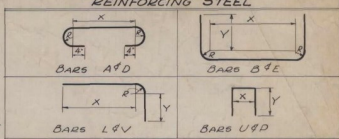


REINFORCING STEEL SCHEDULE

WINGS		BARREL			HEADERS AND APRONS									
No.	Size	Length	Mark	Type	No.	Size	Length	Mark	Type	No.	Size	Length	Mark	Type
1	#4	2'-0"	M4014	SP.	1	#4	10'-0"	M4002	SP.	1	#4	2'-0"	M4002	SP.
2	#4	2'-0"	M4014	SP.	2	#4	10'-0"	M4002	SP.	2	#4	2'-0"	M4002	SP.
3	#4	2'-0"	M4014	SP.	3	#4	10'-0"	M4002	SP.	3	#4	2'-0"	M4002	SP.
4	#4	2'-0"	M4014	SP.	4	#4	10'-0"	M4002	SP.	4	#4	2'-0"	M4002	SP.
5	#4	2'-0"	M4014	SP.	5	#4	10'-0"	M4002	SP.	5	#4	2'-0"	M4002	SP.
6	#4	2'-0"	M4014	SP.	6	#4	10'-0"	M4002	SP.	6	#4	2'-0"	M4002	SP.
7	#4	2'-0"	M4014	SP.	7	#4	10'-0"	M4002	SP.	7	#4	2'-0"	M4002	SP.
8	#4	2'-0"	M4014	SP.	8	#4	10'-0"	M4002	SP.	8	#4	2'-0"	M4002	SP.
9	#4	2'-0"	M4014	SP.	9	#4	10'-0"	M4002	SP.	9	#4	2'-0"	M4002	SP.
10	#4	2'-0"	M4014	SP.	10	#4	10'-0"	M4002	SP.	10	#4	2'-0"	M4002	SP.
11	#4	2'-0"	M4014	SP.	11	#4	10'-0"	M4002	SP.	11	#4	2'-0"	M4002	SP.
12	#4	2'-0"	M4014	SP.	12	#4	10'-0"	M4002	SP.	12	#4	2'-0"	M4002	SP.
13	#4	2'-0"	M4014	SP.	13	#4	10'-0"	M4002	SP.	13	#4	2'-0"	M4002	SP.
14	#4	2'-0"	M4014	SP.	14	#4	10'-0"	M4002	SP.	14	#4	2'-0"	M4002	SP.
15	#4	2'-0"	M4014	SP.	15	#4	10'-0"	M4002	SP.	15	#4	2'-0"	M4002	SP.
16	#4	2'-0"	M4014	SP.	16	#4	10'-0"	M4002	SP.	16	#4	2'-0"	M4002	SP.
17	#4	2'-0"	M4014	SP.	17	#4	10'-0"	M4002	SP.	17	#4	2'-0"	M4002	SP.
18	#4	2'-0"	M4014	SP.	18	#4	10'-0"	M4002	SP.	18	#4	2'-0"	M4002	SP.
19	#4	2'-0"	M4014	SP.	19	#4	10'-0"	M4002	SP.	19	#4	2'-0"	M4002	SP.
20	#4	2'-0"	M4014	SP.	20	#4	10'-0"	M4002	SP.	20	#4	2'-0"	M4002	SP.
21	#4	2'-0"	M4014	SP.	21	#4	10'-0"	M4002	SP.	21	#4	2'-0"	M4002	SP.
22	#4	2'-0"	M4014	SP.	22	#4	10'-0"	M4002	SP.	22	#4	2'-0"	M4002	SP.
23	#4	2'-0"	M4014	SP.	23	#4	10'-0"	M4002	SP.	23	#4	2'-0"	M4002	SP.
24	#4	2'-0"	M4014	SP.	24	#4	10'-0"	M4002	SP.	24	#4	2'-0"	M4002	SP.
25	#4	2'-0"	M4014	SP.	25	#4	10'-0"	M4002	SP.	25	#4	2'-0"	M4002	SP.
26	#4	2'-0"	M4014	SP.	26	#4	10'-0"	M4002	SP.	26	#4	2'-0"	M4002	SP.
27	#4	2'-0"	M4014	SP.	27	#4	10'-0"	M4002	SP.	27	#4	2'-0"	M4002	SP.
28	#4	2'-0"	M4014	SP.	28	#4	10'-0"	M4002	SP.	28	#4	2'-0"	M4002	SP.
29	#4	2'-0"	M4014	SP.	29	#4	10'-0"	M4002	SP.	29	#4	2'-0"	M4002	SP.
30	#4	2'-0"	M4014	SP.	30	#4	10'-0"	M4002	SP.	30	#4	2'-0"	M4002	SP.
31	#4	2'-0"	M4014	SP.	31	#4	10'-0"	M4002	SP.	31	#4	2'-0"	M4002	SP.
32	#4	2'-0"	M4014	SP.	32	#4	10'-0"	M4002	SP.	32	#4	2'-0"	M4002	SP.
33	#4	2'-0"	M4014	SP.	33	#4	10'-0"	M4002	SP.	33	#4	2'-0"	M4002	SP.
34	#4	2'-0"	M4014	SP.	34	#4	10'-0"	M4002	SP.	34	#4	2'-0"	M4002	SP.
35	#4	2'-0"	M4014	SP.	35	#4	10'-0"	M4002	SP.	35	#4	2'-0"	M4002	SP.
36	#4	2'-0"	M4014	SP.	36	#4	10'-0"	M4002	SP.	36	#4	2'-0"	M4002	SP.
37	#4	2'-0"	M4014	SP.	37	#4	10'-0"	M4002	SP.	37	#4	2'-0"	M4002	SP.
38	#4	2'-0"	M4014	SP.	38	#4	10'-0"	M4002	SP.	38	#4	2'-0"	M4002	SP.
39	#4	2'-0"	M4014	SP.	39	#4	10'-0"	M4002	SP.	39	#4	2'-0"	M4002	SP.
40	#4	2'-0"	M4014	SP.	40	#4	10'-0"	M4002	SP.	40	#4	2'-0"	M4002	SP.
41	#4	2'-0"	M4014	SP.	41	#4	10'-0"	M4002	SP.	41	#4	2'-0"	M4002	SP.
42	#4	2'-0"	M4014	SP.	42	#4	10'-0"	M4002	SP.	42	#4	2'-0"	M4002	SP.
43	#4	2'-0"	M4014	SP.	43	#4	10'-0"	M4002	SP.	43	#4	2'-0"	M4002	SP.
44	#4	2'-0"	M4014	SP.	44	#4	10'-0"	M4002	SP.	44	#4	2'-0"	M4002	SP.
45	#4	2'-0"	M4014	SP.	45	#4	10'-0"	M4002	SP.	45	#4	2'-0"	M4002	SP.
46	#4	2'-0"	M4014	SP.	46	#4	10'-0"	M4002	SP.	46	#4	2'-0"	M4002	SP.
47	#4	2'-0"	M4014	SP.	47	#4	10'-0"	M4002	SP.	47	#4	2'-0"	M4002	SP.
48	#4	2'-0"	M4014	SP.	48	#4	10'-0"	M4002	SP.	48	#4	2'-0"	M4002	SP.
49	#4	2'-0"	M4014	SP.	49	#4	10'-0"	M4002	SP.	49	#4	2'-0"	M4002	SP.
50	#4	2'-0"	M4014	SP.	50	#4	10'-0"	M4002	SP.	50	#4	2'-0"	M4002	SP.
51	#4	2'-0"	M4014	SP.	51	#4	10'-0"	M4002	SP.	51	#4	2'-0"	M4002	SP.
52	#4	2'-0"	M4014	SP.	52	#4	10'-0"	M4002	SP.	52	#4	2'-0"	M4002	SP.
53	#4	2'-0"	M4014	SP.	53	#4	10'-0"	M4002	SP.	53	#4	2'-0"	M4002	SP.
54	#4	2'-0"	M4014	SP.	54	#4	10'-0"	M4002	SP.	54	#4	2'-0"	M4002	SP.
55	#4	2'-0"	M4014	SP.	55	#4	10'-0"	M4002	SP.	55	#4	2'-0"	M4002	SP.
56	#4	2'-0"	M4014	SP.	56	#4	10'-0"	M4002	SP.	56	#4	2'-0"	M4002	SP.
57	#4	2'-0"	M4014	SP.	57	#4	10'-0"	M4002	SP.	57	#4	2'-0"	M4002	SP.
58	#4	2'-0"	M4014	SP.	58	#4	10'-0"	M4002	SP.	58	#4	2'-0"	M4002	SP.
59	#4	2'-0"	M4014	SP.	59	#4	10'-0"	M4002	SP.	59	#4	2'-0"	M4002	SP.
60	#4	2'-0"	M4014	SP.	60	#4	10'-0"	M4002	SP.	60	#4	2'-0"	M4002	SP.
61	#4	2'-0"	M4014	SP.	61	#4	10'-0"	M4002	SP.	61	#4	2'-0"	M4002	SP.
62	#4	2'-0"	M4014	SP.	62	#4	10'-0"	M4002	SP.	62	#4	2'-0"	M4002	SP.
63	#4	2'-0"	M4014	SP.	63	#4	10'-0"	M4002	SP.	63	#4	2'-0"	M4002	SP.
64	#4	2'-0"	M4014	SP.	64	#4	10'-0"	M4002	SP.	64	#4	2'-0"	M4002	SP.
65	#4	2'-0"	M4014	SP.	65	#4	10'-0"	M4002	SP.	65	#4	2'-0"	M4002	SP.
66	#4	2'-0"	M4014	SP.	66	#4	10'-0"	M4002	SP.	66	#4	2'-0"	M4002	SP.
67	#4	2'-0"	M4014	SP.	67	#4	10'-0"	M4002	SP.	67	#4	2'-0"	M4002	SP.
68	#4	2'-0"	M4014	SP.	68	#4	10'-0"	M4002	SP.	68	#4	2'-0"	M4002	SP.
69	#4	2'-0"	M4014	SP.	69	#4	10'-0"	M4002	SP.	69	#4	2'-0"	M4002	SP.
70	#4	2'-0"	M4014	SP.	70	#4	10'-0"	M4002	SP.	70	#4	2'-0"	M4002	SP.
71	#4	2'-0"	M4014	SP.	71	#4	10'-0"	M4002	SP.	71	#4	2'-0"	M4002	SP.
72	#4	2'-0"	M4014	SP.	72	#4	10'-0"	M4002	SP.	72	#4	2'-0"	M4002	SP.
73	#4	2'-0"	M4014	SP.	73	#4	10'-0"	M4002	SP.	73	#4	2'-0"	M4002	SP.
74	#4	2'-0"	M4014	SP.	74	#4	10'-0"	M4002	SP.	74	#4	2'-0"	M4002	SP.
75	#4	2'-0"	M4014	SP.	75	#4	10'-0"	M4002	SP.	75	#4	2'-0"	M4002	SP.
76	#4	2'-0"	M4014	SP.	76	#4	10'-0"	M4002	SP.	76	#4	2'-0"	M4002	SP.
77	#4	2'-0"	M4014	SP.	77	#4	10'-0"	M4002	SP.	77	#4	2'-0"	M4002	SP.
78	#4	2'-0"	M4014	SP.	78	#4	10'-0"	M4002	SP.	78	#4	2'-0"	M4002	SP.
79	#4	2'-0"	M4014	SP.	79	#4	10'-0"	M4002	SP.	79	#4	2'-0"	M4002	SP.
80	#4	2'-0"	M4014	SP.	80	#4	10'-0"	M4002	SP.	80	#4	2'-0"	M4002	SP.
81	#4	2'-0"	M4014	SP.	81	#4	10'-0"	M4002	SP.	81	#4	2'-0"	M4002	SP.
82	#4	2'-0"	M4014	SP.	82	#4	10'-0"	M4002	SP.	82	#4	2'-0"	M4002	SP.
83	#4	2'-0"	M4014	SP.	83	#4	10'-0"	M4002	SP.	83	#4	2'-0"	M4002	SP.
84	#4	2'-0"	M4014	SP.	84	#4	10'-0"	M4002	SP.	84	#4	2'-0"	M4002	SP.
85	#4	2'-0"	M4014	SP.	85	#4	10'-0"	M4002	SP.	85	#4	2'-0"	M4002	SP.
86	#4	2'-0"	M4014	SP.	86	#4	10'-0"	M4002	SP.	86	#4	2'-0"	M4002	SP.
87	#4	2'-0"	M4014	SP.	87	#4	10'-0"	M4002	SP.	87	#4	2'-0"	M4002	SP.
88	#4	2'-0"	M4014	SP.	88	#4	10'-0"	M4002	SP.	88	#4	2'-0"	M4002	SP.
89	#4	2'-0"	M4014	SP.	89	#4	10'-0"	M4002						



45 x 6										5 x 7									
T	7'	8'	9'	10'	11'	12'	13'	14'	15'	T	7'	8'	9'	10'	11'	12'	13'	14'	15'
Es	9"	9"	9"	9"	9"	9"	9"	9"	9"	Es	9"	9"	9"	9"	9"	9"	9"	9"	9"
Es	9"	9"	9"	9"	9"	9"	9"	9"	9"	Es	9"	9"	9"	9"	9"	9"	9"	9"	9"



Bar	45 x 6										5 x 7										
	2'11"	3'11"	4'11"	5'11"	6'11"	7'11"	8'11"	9'11"	10'11"	11'11"	2'11"	3'11"	4'11"	5'11"	6'11"	7'11"	8'11"	9'11"	10'11"	11'11"	
A	Size	3/8"	3/8"	3/8"	3/8"	3/8"	3/8"	3/8"	3/8"	3/8"	Size	3/8"	3/8"	3/8"	3/8"	3/8"	3/8"	3/8"	3/8"	3/8"	3/8"
B	Spacing	12"	12"	12"	12"	12"	12"	12"	12"	12"	Spacing	12"	12"	12"	12"	12"	12"	12"	12"	12"	12"
C	Size	3/8"	3/8"	3/8"	3/8"	3/8"	3/8"	3/8"	3/8"	3/8"	Size	3/8"	3/8"	3/8"	3/8"	3/8"	3/8"	3/8"	3/8"	3/8"	3/8"
D	Spacing	12"	12"	12"	12"	12"	12"	12"	12"	12"	Spacing	12"	12"	12"	12"	12"	12"	12"	12"	12"	12"
E	Size	3/8"	3/8"	3/8"	3/8"	3/8"	3/8"	3/8"	3/8"	3/8"	Size	3/8"	3/8"	3/8"	3/8"	3/8"	3/8"	3/8"	3/8"	3/8"	3/8"
F	Spacing	12"	12"	12"	12"	12"	12"	12"	12"	12"	Spacing	12"	12"	12"	12"	12"	12"	12"	12"	12"	12"
G	Size	3/8"	3/8"	3/8"	3/8"	3/8"	3/8"	3/8"	3/8"	3/8"	Size	3/8"	3/8"	3/8"	3/8"	3/8"	3/8"	3/8"	3/8"	3/8"	3/8"
H	Spacing	12"	12"	12"	12"	12"	12"	12"	12"	12"	Spacing	12"	12"	12"	12"	12"	12"	12"	12"	12"	12"
I	Size	3/8"	3/8"	3/8"	3/8"	3/8"	3/8"	3/8"	3/8"	3/8"	Size	3/8"	3/8"	3/8"	3/8"	3/8"	3/8"	3/8"	3/8"	3/8"	3/8"
J	Spacing	12"	12"	12"	12"	12"	12"	12"	12"	12"	Spacing	12"	12"	12"	12"	12"	12"	12"	12"	12"	12"
K	Size	3/8"	3/8"	3/8"	3/8"	3/8"	3/8"	3/8"	3/8"	3/8"	Size	3/8"	3/8"	3/8"	3/8"	3/8"	3/8"	3/8"	3/8"	3/8"	3/8"
L	Spacing	12"	12"	12"	12"	12"	12"	12"	12"	12"	Spacing	12"	12"	12"	12"	12"	12"	12"	12"	12"	12"
M	Size	3/8"	3/8"	3/8"	3/8"	3/8"	3/8"	3/8"	3/8"	3/8"	Size	3/8"	3/8"	3/8"	3/8"	3/8"	3/8"	3/8"	3/8"	3/8"	3/8"
N	Spacing	12"	12"	12"	12"	12"	12"	12"	12"	12"	Spacing	12"	12"	12"	12"	12"	12"	12"	12"	12"	12"
O	Size	3/8"	3/8"	3/8"	3/8"	3/8"	3/8"	3/8"	3/8"	3/8"	Size	3/8"	3/8"	3/8"	3/8"	3/8"	3/8"	3/8"	3/8"	3/8"	3/8"
P	Spacing	12"	12"	12"	12"	12"	12"	12"	12"	12"	Spacing	12"	12"	12"	12"	12"	12"	12"	12"	12"	12"
Q	Size	3/8"	3/8"	3/8"	3/8"	3/8"	3/8"	3/8"	3/8"	3/8"	Size	3/8"	3/8"	3/8"	3/8"	3/8"	3/8"	3/8"	3/8"	3/8"	3/8"
R	Spacing	12"	12"	12"	12"	12"	12"	12"	12"	12"	Spacing	12"	12"	12"	12"	12"	12"	12"	12"	12"	12"

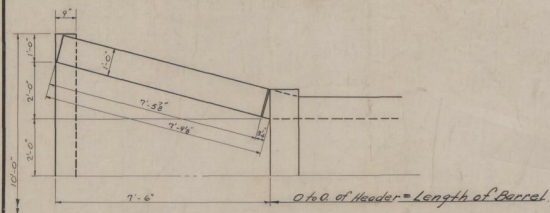
NOTES
 1. Length of bar "As" given in tables is for square box. For skewed box they will be longer and 3 more will be required in end of slab 12" placed parallel to header.
 2. Length of bar "N" as given in table is for square box. For skewed box they will be longer.
 3. These bars to be used in boxes with expansion joints only in culverts with expansion joints, horizontal cable steel strip short of joint.
 4. In skewed culverts bars in barrel are to be ordered as for square box, cut to fit use slant end and cut-off pieces used in other end together with 3 additional 1/2" bars.
 5. Designed in accordance with ANSHO Spec. 1944

ESTIMATED QUANTITIES

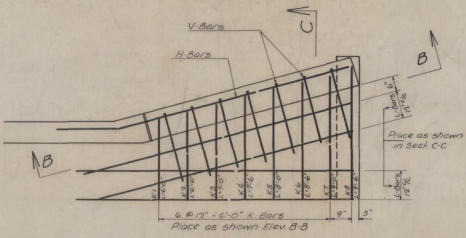
Correct: *A.D. Sieff*
 Bridge Engineer May 12, 1941

DETAILS 45'x6'x5'x7'
 RC BOX CATTLEPASSES
 Scale - 1/2" = 1'-0" Unless Noted
 Revised 10-30-45 H.E.S.
 Cleats added & P. test better reduced

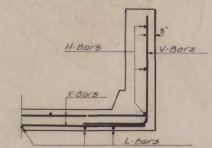
Surveyed by L.M.B. May, 1941
 Drawn by L.M.B.
 Traced by H.W.D.
 Checked by W.H.D.
 Series RCC No. 1
 Sheet of Sheets



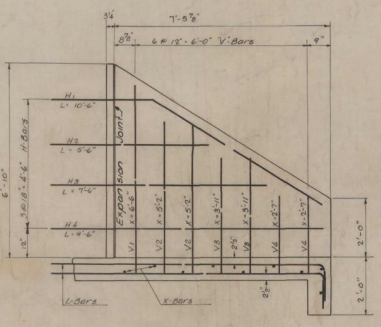
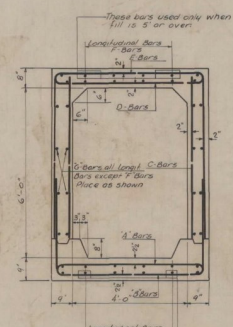
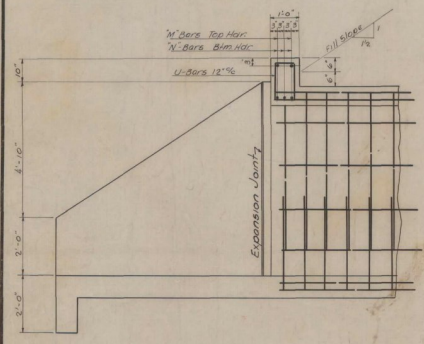
PART PLAN SLAB



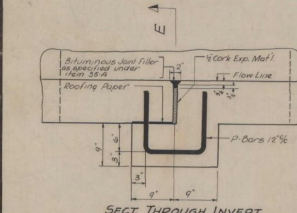
PART PLAN INVERT



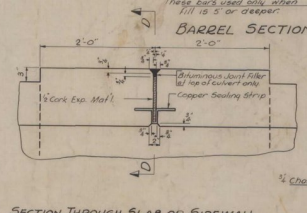
SECTION C-C



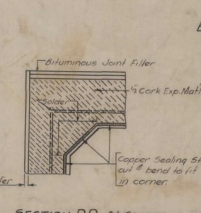
ELEVATION B-B



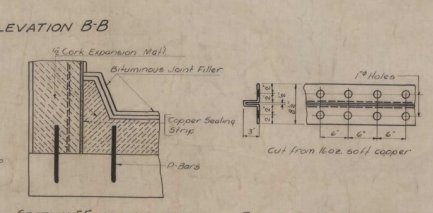
SECT THROUGH INVERT



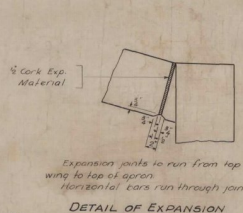
SECTION THROUGH SLAB OR SIDEWALL



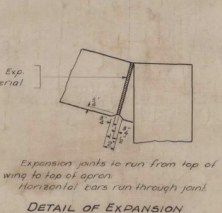
SECTION DD AT CORNER



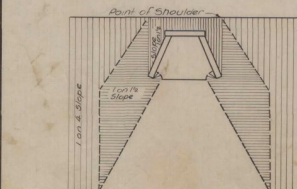
SECTION EE AT BOTTOM CORNER



DETAIL OF COPPER SEALING STRIP



DETAIL OF EXPANSION JOINT IN WING



PLAN VIEW SKETCH SHOWING TRANSITION FROM 1 ON 4 SLOPE TO 1 ON 1 1/2 BACK TO 1 ON 4

DETAILS OF EXPANSION JOINTS IN BARREL
Scale 1" = 1'-0"

Bituminous joint filler, copper sealing strip, cork expansion material and all labor and materials necessary to installation of same shall be included in unit price. See also concrete class 4.
Expansion joints shall be placed in 1/2 of boxes 41" to 80" and at 1/2 points for boxes 81" to 120".

NOTES
① Length of bar "M" as given in tables is for Square Box. For skewed box they will be longer and 3 more will be required in end of slab 12 1/2".
② Length of bar "N" as given in tables is for Square Box. For skewed box they will be longer.
③ These bars to be used in boxes with expansion joints only. In culverts with expansion joints, horizontal bars shall stop short of joints.
④ In skewed culverts, bars in barrel are to be ordered as for square box, cut to fit one skew end and cut off pieces used in other end together with 3 additional "M" bars designed in accordance with AASHTO Specification, 1941.
⑤ During such time as the specified materials are not available, as determined by the engineer, the following substitutions may be made: 40 oz. sheet lead for 16 oz. soft copper in Sealing Strips and 2 prewired exp. mat. for 1/2" cork exp. mat. in wing and barrel expansion joints.

REINFORCING STEEL

BARS A'D		BARS B'E	
BARS L'V		BARS U'P	

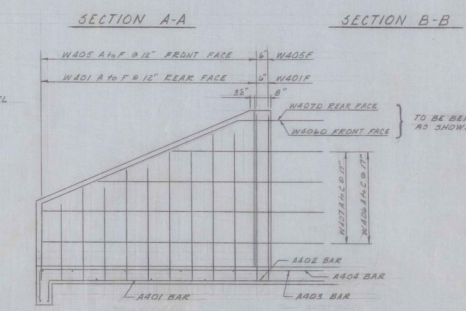
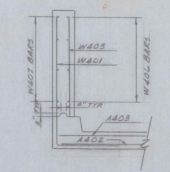
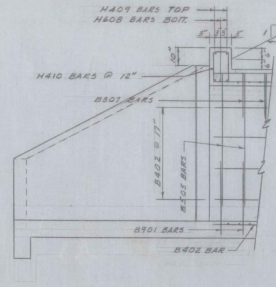
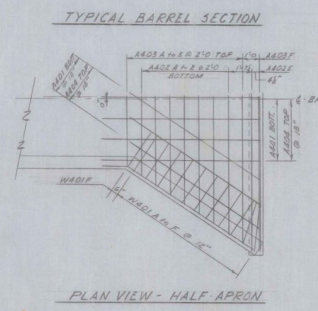
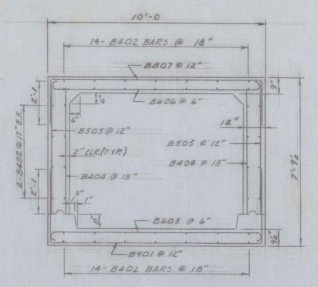
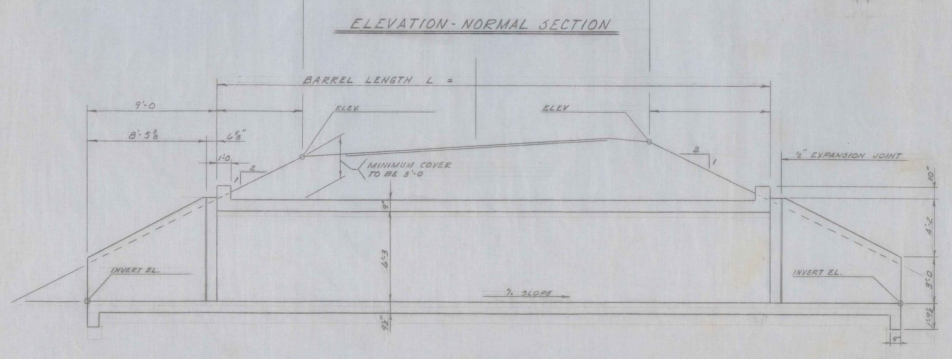
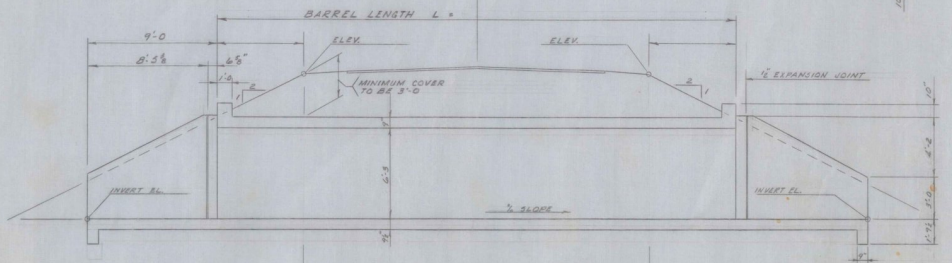
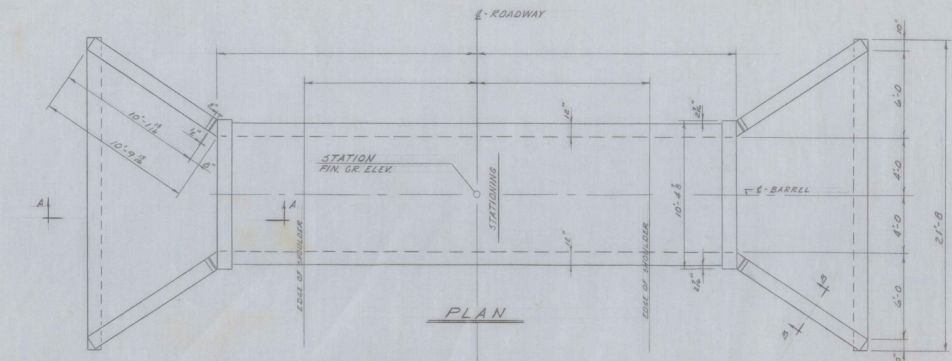
Bar Data	4' x 6'	6' x 6'	8' x 6'	10' x 6'	12' x 6'
A	12	12	12	12	12
B	12	12	12	12	12
C	12	12	12	12	12
D	12	12	12	12	12
E	12	12	12	12	12
F	12	12	12	12	12
G	12	12	12	12	12
H	12	12	12	12	12
I	12	12	12	12	12
J	12	12	12	12	12
K	12	12	12	12	12
L	12	12	12	12	12
M	12	12	12	12	12
N	12	12	12	12	12
O	12	12	12	12	12
P	12	12	12	12	12
Q	12	12	12	12	12
R	12	12	12	12	12
S	12	12	12	12	12
T	12	12	12	12	12
U	12	12	12	12	12
V	12	12	12	12	12
W	12	12	12	12	12
X	12	12	12	12	12
Y	12	12	12	12	12
Z	12	12	12	12	12

ESTIMATED QUANTITIES

DETAILS 4'x6'
RC BOX CATTLEPASS
Scale 1/2" = 1'-0" Unless noted

Correct
A. J. Dink
Bridge Engineer

Designed by L.M.B.
Drawn by L.M.B.
Traced by H.W.S.
Checked by A.F.P.
Series R.C.C. No. 2
Sheet of Sheets



REINFORCING STEEL SCHEDULE												GENERAL NOTES:--												
TYPE 1				TYPE 2				TYPE 3				TYPE 4				No.	Description	Units	Total	Final				
WINGS	BARREL			HEADERS AND APRONS			WINGS			BARREL			HEADERS AND APRONS											
No.	Size	Length	Mark	Type	A	B	C	D	No.	Size	Length	Mark	Type	A	B	C	No.	Size	Length	Mark	Type	A	B	C
1	#4	2'-0"	W402A	STC					1	#4	10'-0"	H402	STC				1	#4	10'-0"	H402	STC			
2	#4	3'-0"	W402B	STC					2	#4	10'-0"	H402	STC				2	#4	10'-0"	H402	STC			
3	#4	8'-0"	W402C	STC					3	#4	10'-0"	H402	STC				3	#4	10'-0"	H402	STC			
4	#4	8'-0"	W402D	STC					4	#4	10'-0"	H402	STC				4	#4	10'-0"	H402	STC			
5	#4	8'-0"	W402E	STC					5	#4	10'-0"	H402	STC				5	#4	10'-0"	H402	STC			
6	#4	8'-0"	W402F	STC					6	#4	10'-0"	H402	STC				6	#4	10'-0"	H402	STC			
7	#4	8'-0"	W402G	STC					7	#4	10'-0"	H402	STC				7	#4	10'-0"	H402	STC			
8	#4	8'-0"	W402H	STC					8	#4	10'-0"	H402	STC				8	#4	10'-0"	H402	STC			
9	#4	8'-0"	W402I	STC					9	#4	10'-0"	H402	STC				9	#4	10'-0"	H402	STC			
10	#4	8'-0"	W402J	STC					10	#4	10'-0"	H402	STC				10	#4	10'-0"	H402	STC			
11	#4	8'-0"	W402K	STC					11	#4	10'-0"	H402	STC				11	#4	10'-0"	H402	STC			
12	#4	8'-0"	W402L	STC					12	#4	10'-0"	H402	STC				12	#4	10'-0"	H402	STC			
13	#4	8'-0"	W402M	STC					13	#4	10'-0"	H402	STC				13	#4	10'-0"	H402	STC			
14	#4	8'-0"	W402N	STC					14	#4	10'-0"	H402	STC				14	#4	10'-0"	H402	STC			
15	#4	8'-0"	W402O	STC					15	#4	10'-0"	H402	STC				15	#4	10'-0"	H402	STC			
16	#4	8'-0"	W402P	STC					16	#4	10'-0"	H402	STC				16	#4	10'-0"	H402	STC			
17	#4	8'-0"	W402Q	STC					17	#4	10'-0"	H402	STC				17	#4	10'-0"	H402	STC			
18	#4	8'-0"	W402R	STC					18	#4	10'-0"	H402	STC				18	#4	10'-0"	H402	STC			
19	#4	8'-0"	W402S	STC					19	#4	10'-0"	H402	STC				19	#4	10'-0"	H402	STC			
20	#4	8'-0"	W402T	STC					20	#4	10'-0"	H402	STC				20	#4	10'-0"	H402	STC			
21	#4	8'-0"	W402U	STC					21	#4	10'-0"	H402	STC				21	#4	10'-0"	H402	STC			
22	#4	8'-0"	W402V	STC					22	#4	10'-0"	H402	STC				22	#4	10'-0"	H402	STC			
23	#4	8'-0"	W402W	STC					23	#4	10'-0"	H402	STC				23	#4	10'-0"	H402	STC			
24	#4	8'-0"	W402X	STC					24	#4	10'-0"	H402	STC				24	#4	10'-0"	H402	STC			
25	#4	8'-0"	W402Y	STC					25	#4	10'-0"	H402	STC				25	#4	10'-0"	H402	STC			
26	#4	8'-0"	W402Z	STC					26	#4	10'-0"	H402	STC				26	#4	10'-0"	H402	STC			
27	#4	8'-0"	W402AA	STC					27	#4	10'-0"	H402	STC				27	#4	10'-0"	H402	STC			
28	#4	8'-0"	W402AB	STC					28	#4	10'-0"	H402	STC				28	#4	10'-0"	H402	STC			
29	#4	8'-0"	W402AC	STC					29	#4	10'-0"	H402	STC				29	#4	10'-0"	H402	STC			
30	#4	8'-0"	W402AD	STC					30	#4	10'-0"	H402	STC				30	#4	10'-0"	H402	STC			
31	#4	8'-0"	W402AE	STC					31	#4	10'-0"	H402	STC				31	#4	10'-0"	H402	STC			
32	#4	8'-0"	W402AF	STC					32	#4	10'-0"	H402	STC				32	#4	10'-0"	H402	STC			
33	#4	8'-0"	W402AG	STC					33	#4	10'-0"	H402	STC				33	#4	10'-0"	H402	STC			
34	#4	8'-0"	W402AH	STC					34	#4	10'-0"	H402	STC				34	#4	10'-0"	H402	STC			
35	#4	8'-0"	W402AI	STC					35	#4	10'-0"	H402	STC				35	#4	10'-0"	H402	STC			
36	#4	8'-0"	W402AJ	STC					36	#4	10'-0"	H402	STC				36	#4	10'-0"	H402	STC			
37	#4	8'-0"	W402AK	STC					37	#4	10'-0"	H402	STC				37	#4	10'-0"	H402	STC			
38	#4	8'-0"	W402AL	STC					38	#4	10'-0"	H402	STC				38	#4	10'-0"	H402	STC			
39	#4	8'-0"	W402AM	STC					39	#4	10'-0"	H402	STC				39	#4	10'-0"	H402	STC			
40	#4	8'-0"	W402AN	STC					40	#4	10'-0"	H402	STC				40	#4	10'-0"	H402	STC			
41	#4	8'-0"	W402AO	STC					41	#4	10'-0"	H402	STC				41	#4	10'-0"	H402	STC			
42	#4	8'-0"	W402AP	STC					42	#4	10'-0"	H402	STC				42	#4	10'-0"	H402	STC			
43	#4	8'-0"	W402AQ	STC					43	#4	10'-0"	H402	STC				43	#4	10'-0"	H402	STC			
44	#4	8'-0"	W402AR	STC					44	#4	10'-0"	H402	STC				44	#4	10'-0"	H402	STC			
45	#4	8'-0"	W402AS	STC					45	#4	10'-0"	H402	STC				45	#4	10'-0"	H402	STC			
46	#4	8'-0"	W402AT	STC					46	#4	10'-0"	H402	STC				46	#4	10'-0"	H402	STC			
47	#4	8'-0"	W402AU	STC					47	#4	10'-0"	H402	STC				47	#4	10'-0"	H402	STC			
48	#4	8'-0"	W402AV	STC					48	#4	10'-0"	H402	STC				48	#4	10'-0"	H402	STC			
49	#4	8'-0"	W402AW	STC					49	#4	10'-0"	H402	STC				49	#4	10'-0"	H402	STC			
50	#4	8'-0"	W402AX	STC					50	#4	10'-0"	H402	STC				50	#4	10'-0"	H402	STC			
51	#4	8'-0"	W402AY	STC					51	#4	10'-0"	H402	STC				51	#4	10'-0"	H402	STC			
52	#4	8'-0"	W402AZ	STC					52	#4	10'-0"	H402	STC				52	#4	10'-0"	H402	STC			
53	#4	8'-0"	W402BA	STC					53	#4	10'-0"	H402	STC				53	#4	10'-0"	H402	STC			
54	#4	8'-0"	W402BB	STC					54	#4	10'-0"	H402	STC				54	#4	10'-0"	H402	STC			
55	#4	8'-0"	W402BC	STC					55	#4	10'-0"	H402	STC				55	#4	10'-0"	H402	STC			
56	#4	8'-0"	W402BD	STC					56	#4	10'-0"	H402	STC				56	#4	10'-0"	H402	STC			
57	#4	8'-0"	W402BE	STC					57	#4	10'-0"	H402	STC				57	#4	10'-0"	H402	STC			
58	#4	8'-0"	W402BF	STC					58	#4	10'-0"	H402	STC				58	#4	10'-0"	H402	STC			
59	#4	8'-0"	W402BG	STC					59	#4	10'-0"	H402	STC				59	#4	10'-0"	H402	STC			
60	#4	8'-0"	W402BH	STC					60	#4	10'-0"	H402	STC				60	#4	10'-0"	H402	STC			
61	#4	8'-0"	W402BI	STC					61	#4	10'-0"	H402	STC				61	#4	10'-0"	H402	STC			
62	#4	8'-0"	W402BJ	STC					62	#4	10'-0"	H402	STC				62	#4	10'-0"	H402	STC			
63	#4	8'-0																						