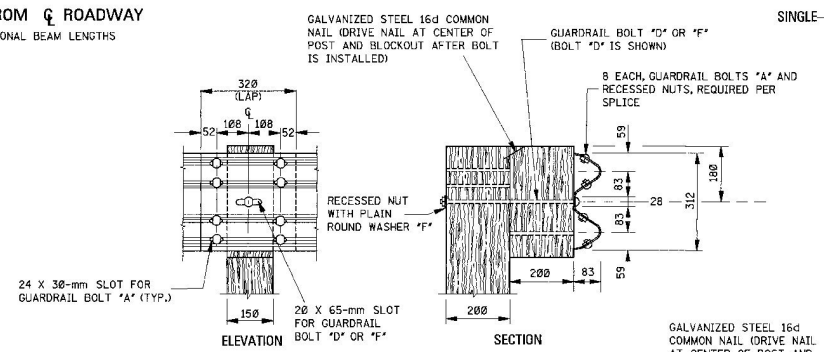
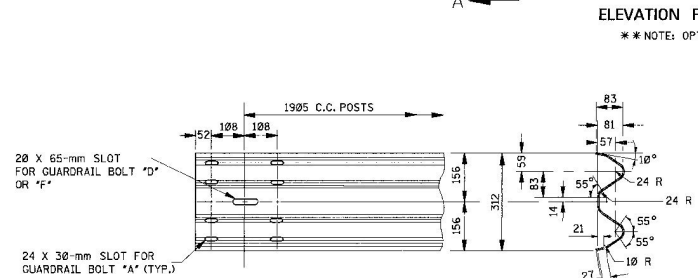
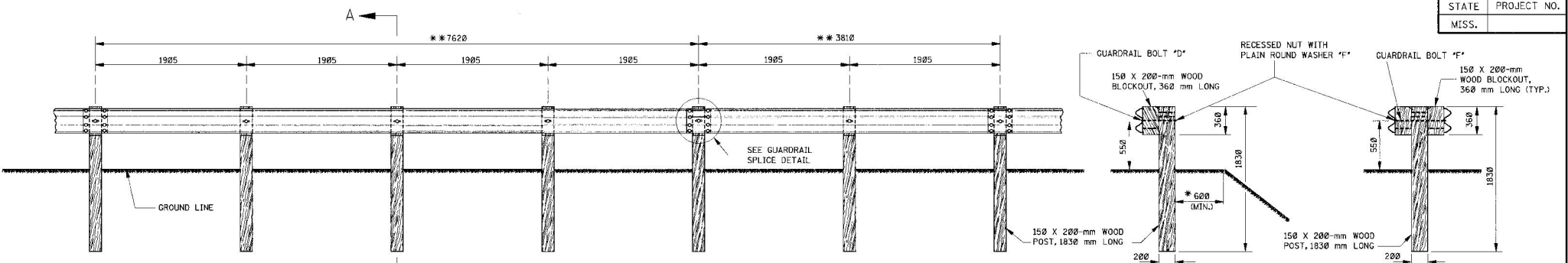
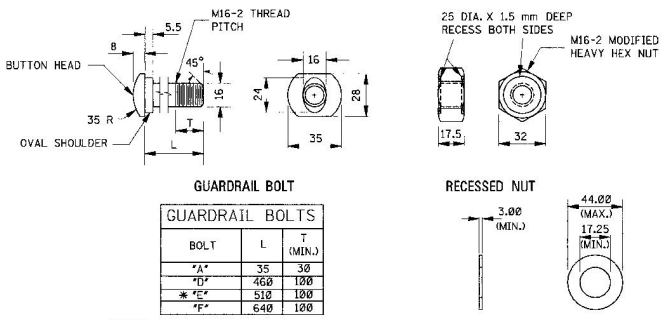


STATE	PROJECT NO.
MISS.	

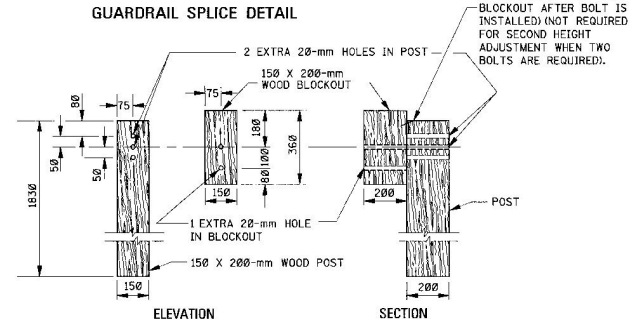


SECTION A-A
 *NOTE: UNLESS SPECIFIED OTHERWISE ON THE PLANS.

- GENERAL NOTES:**
- GUARDRAIL SHALL MEET THE REQUIREMENTS OF AASHTO M 160, CLASS A, TYPE 1 UNLESS OTHERWISE DESIGNATED.
 - GUARDRAIL SHALL BE SINGLE FACED UNLESS OTHERWISE DESIGNATED.
 - GUARDRAIL SECTIONS SHALL BE LAPPED IN THE DIRECTION OF TRAFFIC FLOW FOR THE LANE NEAREST THE GUARDRAIL. THE ONLY EXCEPTION NOTED IS THAT GUARDRAIL IS TO BE LAPPED FOR APPROACHING TRAFFIC ON A BRIDGE WITH 2-WAY TRAFFIC.
 - ALL WOOD POSTS AND BLOCKOUTS SHALL BE TREATED TIMBER IN ACCORDANCE WITH MISSISSIPPI DEPARTMENT OF TRANSPORTATION STANDARD SPECIFICATIONS.
 - FOR OTHER DETAILS OF POSTS, POST ACCESSORIES, FASTENERS & RAIL ELEMENTS, SEE AASHTO-AGC-ARTBA JOINT TASK FORCE NO. 13, TITLED "A GUIDE TO STANDARDIZED HIGHWAY BARRIER HARDWARE," LATEST EDITION.



- NOTES:**
- ALL GUARDRAIL BOLTS M16-2 THREAD PITCH.
 - IF ANY BOLT EXTENDS MORE THAN 6 mm FROM THE NUT, THE BOLT SHOULD BE TRIMMED BACK.
 - GUARDRAIL BOLT "E" IS USED FOR SINGLE-FACED BARRIER WITH 250-mm WOOD POST AND 200-mm WOOD BLOCKOUT.



- NOTES:**
- ON INITIAL INSTALLATION, THE BLOCKOUT SHALL BE ATTACHED TO THE BOTTOM HOLE IN THE POST. OTHER HOLES IN THE POST AND BLOCKOUT ARE FOR FUTURE 50-mm HEIGHT ADJUSTMENTS WHEN THE ROADWAY IS RESURFACED.
 - AN ADDITIONAL HEX HEAD BOLT AND TWO WASHERS ARE REQUIRED FOR THE SECOND HEIGHT ADJUSTMENT.
 - HOLE DETAILS ARE REQUIRED ON ALL WOOD POSTS AND BLOCKOUTS.
 - WOOD POSTS AND BLOCKOUTS ARE FABRICATED FROM 150 X 200-mm TREATED TIMBER UNLESS SPECIFIED OTHERWISE ON THE PLANS.
 - ALL HOLES IN BOTH POSTS AND BLOCKOUTS ARE 20 mm IN DIAMETER.

ALL DIMENSIONS ARE IN MILLIMETERS (mm) EXCEPT WHERE NOTED.

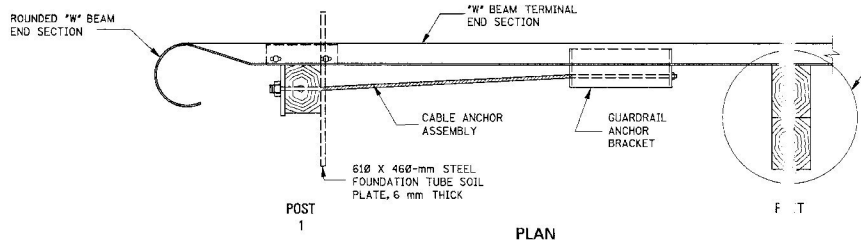
MISSISSIPPI DEPARTMENT OF TRANSPORTATION
 ROADWAY DESIGN DIVISION
 STANDARD PLAN

**GUARDRAIL:
 "W" BEAM
 (WOOD POSTS)**

DATE	REVISION	BY

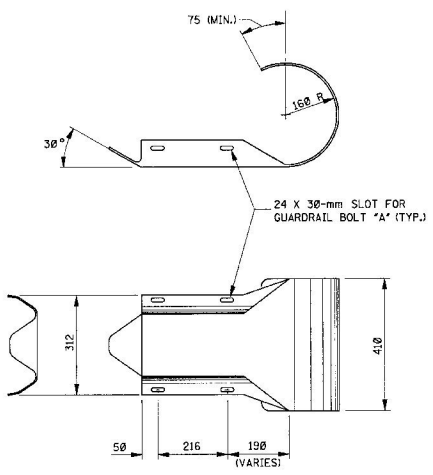
ISSUE DATE: _____

WORKING NUMBER GR-1
 SHEET NUMBER 180

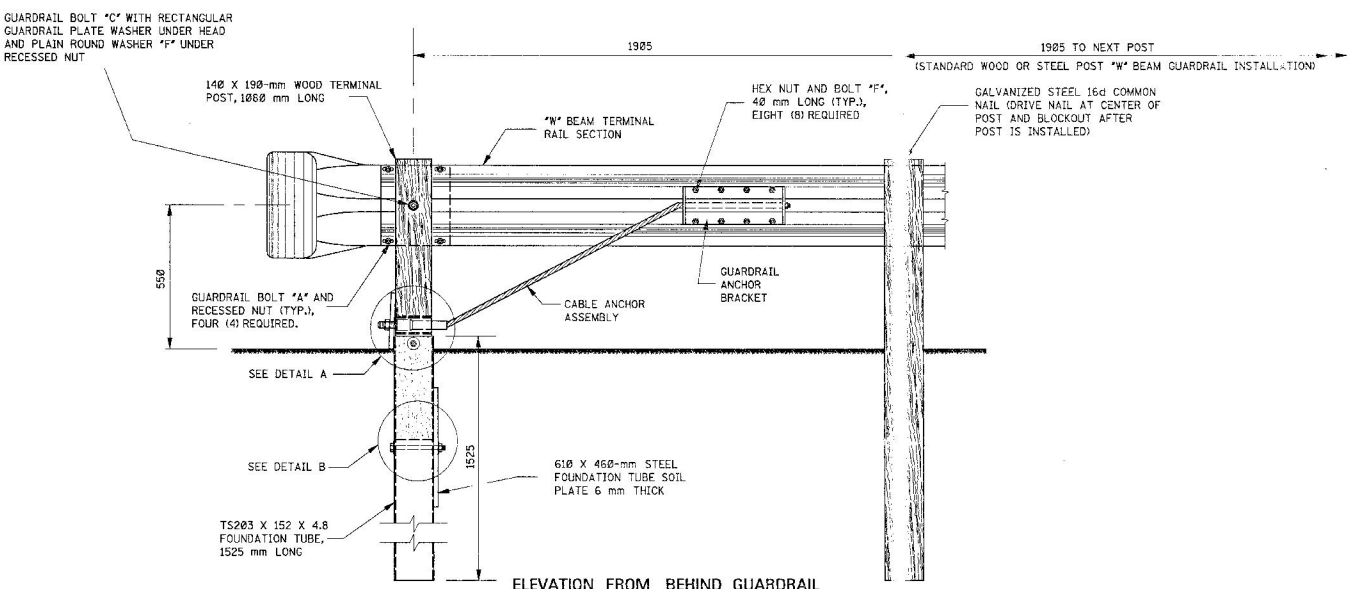


NOTE: THE "POST 2" ASSEMBLY DEPENDS ON WHETHER THE TRAILING END TERMINAL IS ATTACHED TO THE STANDARD WOOD OR STEEL POST "W" BEAM GUARDRAIL INSTALLATION AS FOLLOWS:

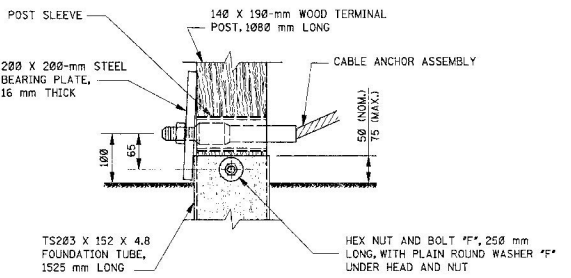
- WOOD POST INSTALLATION (SHOWN)**
 "W" BEAM TERMINAL RAIL SECTION, 153 X 200-mm WOOD BLOCKOUT, 360 mm LONG, AND 150 X 200-mm WOOD POST, 1625 mm LONG, ATTACHED WITH GUARDRAIL BOLT "D" AND RECESSED NUT. INSTALL RECTANGULAR GUARDRAIL PLATE WASHER UNDER HEAD AND PLAIN ROUND WASHER "F" UNDER RECESSED NUT.
- STEEL POST INSTALLATION**
 "W" BEAM TERMINAL RAIL SECTION, 150 X 200-mm MODIFIED WOOD BLOCKOUT, 360 mm LONG, AND W150 X 13.5 STEEL POST, 1630 mm LONG, ATTACHED WITH GUARDRAIL BOLT "D" AND RECESSED NUT. INSTALL RECTANGULAR GUARDRAIL PLATE WASHER UNDER GUARDRAIL BOLT HEAD.



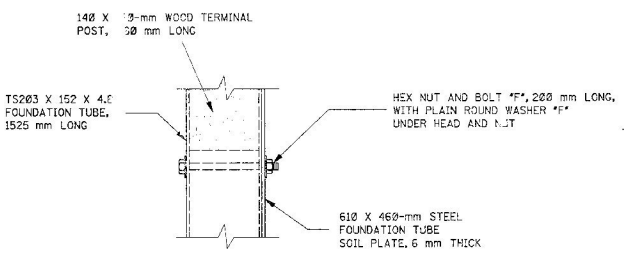
ROUNDED "W" BEAM END SECTION
 NOTE: THE CROSS-SECTIONAL DIMENSIONS FOR THIS PART ARE TO FIT OVER THE STANDARD "W" BEAM SECTION.



- GENERAL NOTES:
- THIS ANCHORAGE MAY ONLY BE USED ON THE TRAILING END OF A BARRIER WHICH IS NOT EXPOSED TO VEHICULAR IMPACT.
 - GUARDRAIL SHALL MEET THE REQUIREMENTS OF AASHTO M 188, CLASS A, TYPE 1 UNLESS OTHERWISE DESIGNATED.
 - ALL WOOD POSTS AND BLOCKOUTS SHALL BE TREATED TIMBER IN ACCORDANCE WITH MISSISSIPPI DEPARTMENT OF TRANSPORTATION STANDARD SPECIFICATIONS.
 - FOR DETAILS OF HARDWARE AND COMPONENTS NOT FOUND ON THIS SHEET, SEE SHEETS GR-M1 AND GR-M2.
 - DETAILS PERTINENT TO THE STANDARD INSTALLATION OF "W" BEAM SECTIONS WILL BE FOUND ON SHEET GR-1, FOR WOOD POSTS, AND GR-1B, FOR STEEL POSTS.
 - FOR OTHER DETAILS OF POSTS, POST ACCESSORIES, FASTENERS AND RAIL ELEMENTS, SEE AASHTO-AGC-ARTBA JOINT TASK FOR NO. 13, TITLED "A GUIDE TO STANDARDIZED HIGHWAY BARRIER HARDWARE," LATEST EDITION.



DETAIL A




DETAIL B

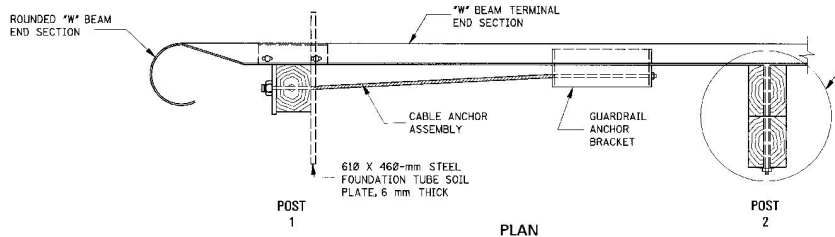
ALL DIMENSIONS ARE IN MILLIMETERS (mm) EXCEPT WHERE NOTED.

BY	MISSISSIPPI DEPARTMENT OF TRANSPORTATION ROADWAY DESIGN DIVISION STANDARD PLAN
REVISION	
DATE	ISSUE DATE: _____

**GUARDRAIL:
TYPE 1 CABLE ANCHORAGE
(FOUNDATION TUBE)**

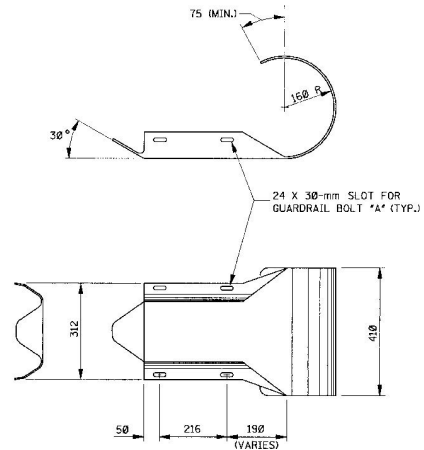


WORKING NUMBER
GR-3
SHEET NUMBER
192



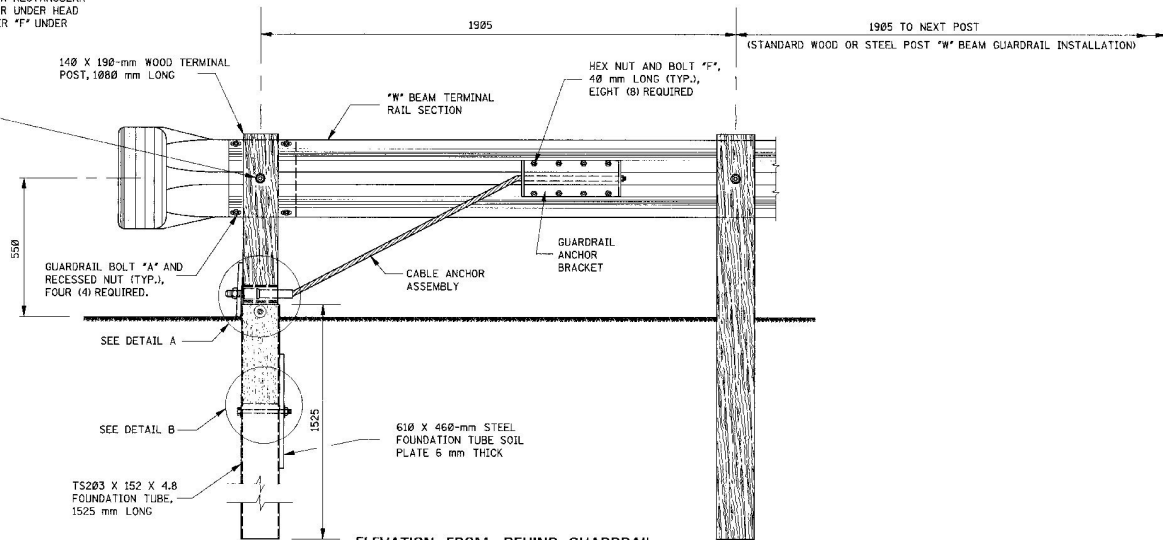
NOTE: THE "POST 2" ASSEMBLY DEPENDS ON WHETHER THE TRAILING END TERMINAL IS ATTACHED TO THE STANDARD WOOD OR STEEL POST "W" BEAM GUARDRAIL INSTALLATION AS FOLLOWS:

- WOOD POST INSTALLATION (SHOWN)**
 "W" BEAM TERMINAL RAIL SECTION, 150 X 200-mm WOOD BLOCKOUT, 360 mm LONG, AND 150 X 200-mm WOOD POST, 1625 mm LONG, ATTACHED WITH GUARDRAIL BOLT "D" AND RECESSED NUT. INSTALL RECTANGULAR GUARDRAIL PLATE WASHER UNDER HEAD AND PLAIN ROUND WASHER "F" UNDER RECESSED NUT.
- STEEL POST INSTALLATION**
 W150 X 13.5 STEEL BLOCKOUT, 360 mm LONG, ATTACHED TO W150 X 13.5 STEEL POST, 1830 mm LONG, WITH TWO (2) HEX NUT AND BOLT "F", 40 mm LONG. "W" BEAM TERMINAL RAIL SECTION ATTACHED TO STEEL BLOCKOUT WITH GUARDRAIL BOLT "B" AND RECESSED NUT. INSTALL RECTANGULAR GUARDRAIL PLATE WASHER UNDER GUARDRAIL BOLT HEAD.



ROUNDED "W" BEAM END SECTION
 NOTE: THE CROSS-SECTIONAL DIMENSIONS FOR THIS PART ARE TO FIT OVER THE STANDARD "W" BEAM SECTION.

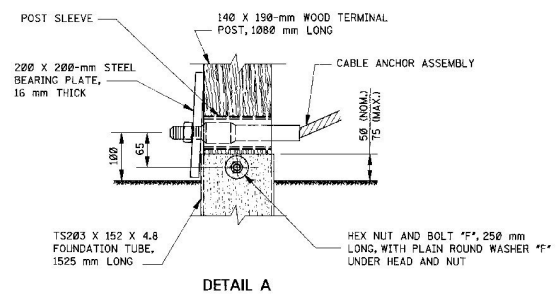
GUARDRAIL BOLT "C" WITH RECTANGULAR GUARDRAIL PLATE WASHER UNDER HEAD AND PLAIN ROUND WASHER "F" UNDER RECESSED NUT



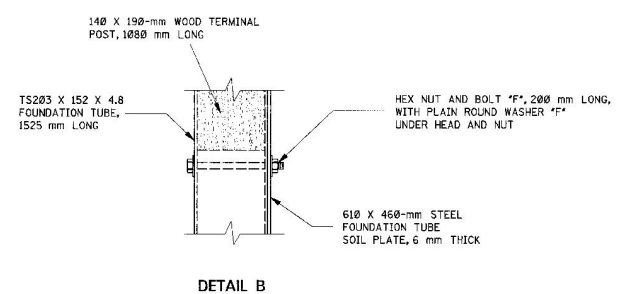
ELEVATION FROM BEHIND GUARDRAIL
 NOTE: ANCHOR CABLE SHALL BE TAUT.

GENERAL NOTES:

- THIS ANCHORAGE MAY ONLY BE USED ON THE TRAILING END OF A BARRIER WHICH IS NOT EXPOSED TO VEHICULAR IMPACT.
- GUARDRAIL SHALL MEET THE REQUIREMENTS OF AASHTO M 180, CLASS A, TYPE 1 UNLESS OTHERWISE DESIGNATED.
- ALL WOOD POSTS AND BLOCKOUTS SHALL BE TREATED TIMBER IN ACCORDANCE WITH MISSISSIPPI DEPARTMENT OF TRANSPORTATION STANDARD SPECIFICATIONS.
- FOR DETAILS OF HARDWARE AND COMPONENTS NOT FOUND ON THIS SHEET, SEE SHEETS GR-M1 AND GR-M2.
- DETAILS PERTINENT TO THE STANDARD INSTALLATION OF "W" BEAM SECTIONS WILL BE FOUND ON SHEET GR-1, FOR WOOD POSTS, AND GR-1B, FOR STEEL POSTS.
- FOR OTHER DETAILS OF POSTS, POST ACCESSORIES, FASTENERS AND RAIL ELEMENTS, SEE AASHTO-AGC-ARTBA JOINT TASK FOR NO. 13, TITLED "A GUIDE TO STANDARDIZED HIGHWAY BARRIER HARDWARE," LATEST EDITION.




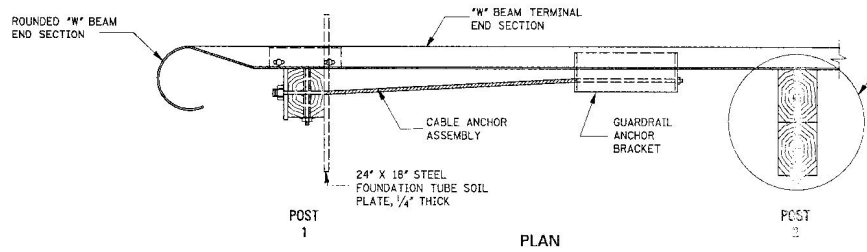
DETAIL A



DETAIL B

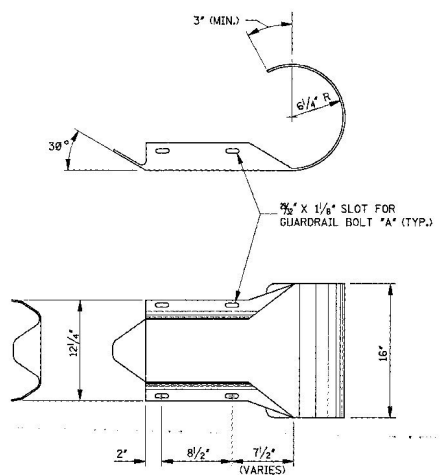
ALL DIMENSIONS ARE IN MILLIMETERS (mm) EXCEPT WHERE NOTED.

MISSISSIPPI DEPARTMENT OF TRANSPORTATION ROADWAY DESIGN DIVISION STANDARD PLAN	
GUARDRAIL: TYPE 1 CABLE ANCHORAGE (FOUNDATION TUBE)	
WORKING NUMBER GR-3	 SHEET NUMBER 192
ISSUE DATE:	

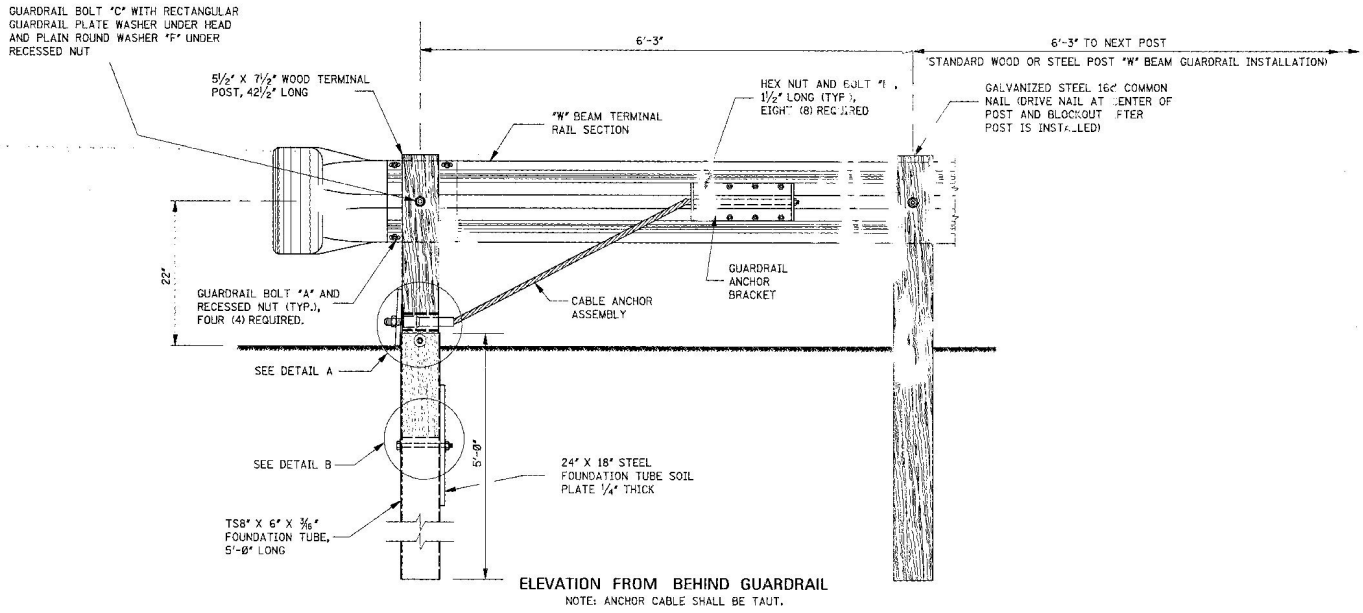


NOTE: THE 'POST 2' ASSEMBLY DEPENDS ON WHETHER THE TRAILING END TERMINAL IS ATTACHED TO THE STANDARD WOOD OR STEEL POST 'W' BEAM GUARDRAIL INSTALLATION AS FOLLOWS:

- WOOD POST INSTALLATION (SHOWN)**
 'W' BEAM TERMINAL RAIL SECTION, 6' X 8' WOOD BLOCKOUT, 14' LONG, AND 6' X 8' WOOD POST, 5'-4" LONG, ATTACHED WITH GUARDRAIL BOLT 'D' AND RECESSED NUT. INSTALL RECTANGULAR GUARDRAIL PLATE WASHER UNDER HEAD AND PLAIN ROUND WASHER 'F' UNDER RECESSED NUT.
- STEEL POST INSTALLATION**
 'W' BEAM TERMINAL RAIL SECTION, 6' X 8' MODIFIED WOOD BLOCKOUT, 14' LONG, AND W6 X 9 STEEL POST, 6'-2" LONG, ATTACHED WITH GUARDRAIL BOLT 'C' AND RECESSED NUT. INSTALL RECTANGULAR GUARDRAIL PLATE WASHER UNDER GUARDRAIL BOLT HEAD.

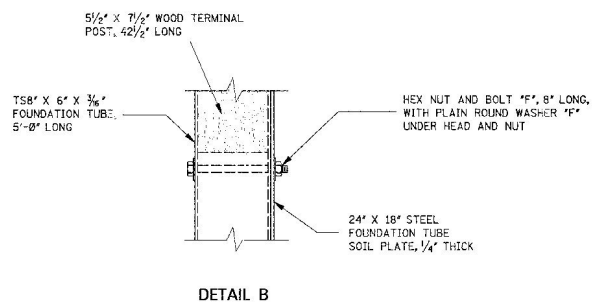
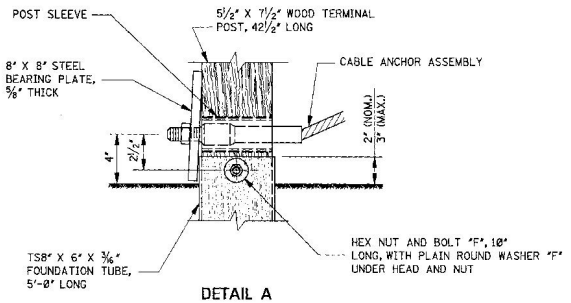



ROUNDED "W" BEAM END SECTION
 NOTE: THE CROSS-SECTIONAL DIMENSIONS FOR THIS PART ARE TO FIT OVER THE STANDARD "W" BEAM SECTION.



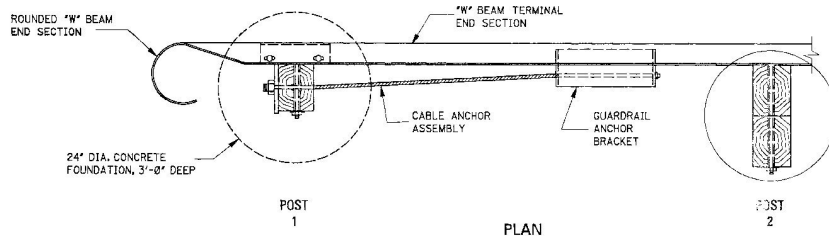
GENERAL NOTES:

- THIS ANCHORAGE MAY ONLY BE USED ON THE TRAILING END OF A BARRIER WHICH IS NOT EXPOSED TO VEHICULAR IMPACT.
- GUARDRAIL SHALL MEET THE REQUIREMENTS OF AASHTO M 188, CLASS A, TYPE 1 UNLESS OTHERWISE DESIGNATED.
- ALL WOOD POSTS AND BLOCKOUTS SHALL BE TREATED TIMBER IN ACCORDANCE WITH MISSISSIPPI DEPARTMENT OF TRANSPORTATION STANDARD SPECIFICATIONS.
- FOR DETAILS OF HARDWARE AND COMPONENTS NOT FOUND ON THIS SHEET, SEE SHEETS GR-M1 AND GR-M2.
- DETAILS PERTINENT TO THE STANDARD INSTALLATION OF 'W' BEAM SECTIONS WILL BE FOUND ON SHEET GR-1, FOR WOOD POSTS, AND GR-1B, FOR STEEL POSTS.
- FOR OTHER DETAILS OF POSTS, POST ACCESSORIES, FASTENERS AND RAIL ELEMENTS, SEE AASHTO-AGC-ARTBA JOINT TASK FOR NO. 13, TITLED 'A GUIDE TO STANDARDIZED HIGHWAY BARRIER HARDWARE,' LATEST EDITION.



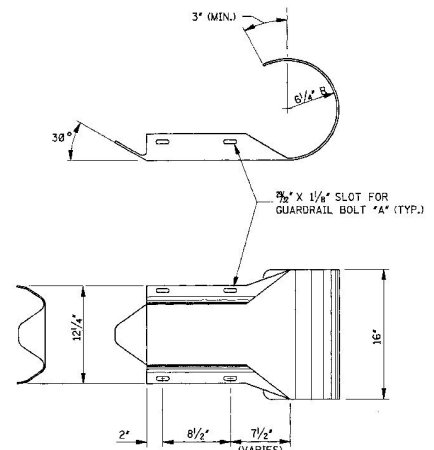
DATE	REVISION	BY	MISSISSIPPI DEPARTMENT OF TRANSPORTATION ROADWAY DESIGN DIVISION STANDARD PLAN
			GUARDRAIL: TYPE 1 CABLE ANCHORAGE (FOUNDATION TUBE)
			 WORKING NUMBER GR-3 SHEET NUMBER 192
ISSUE DATE: _____			

STATE	PROJECT NO.
MISS.	



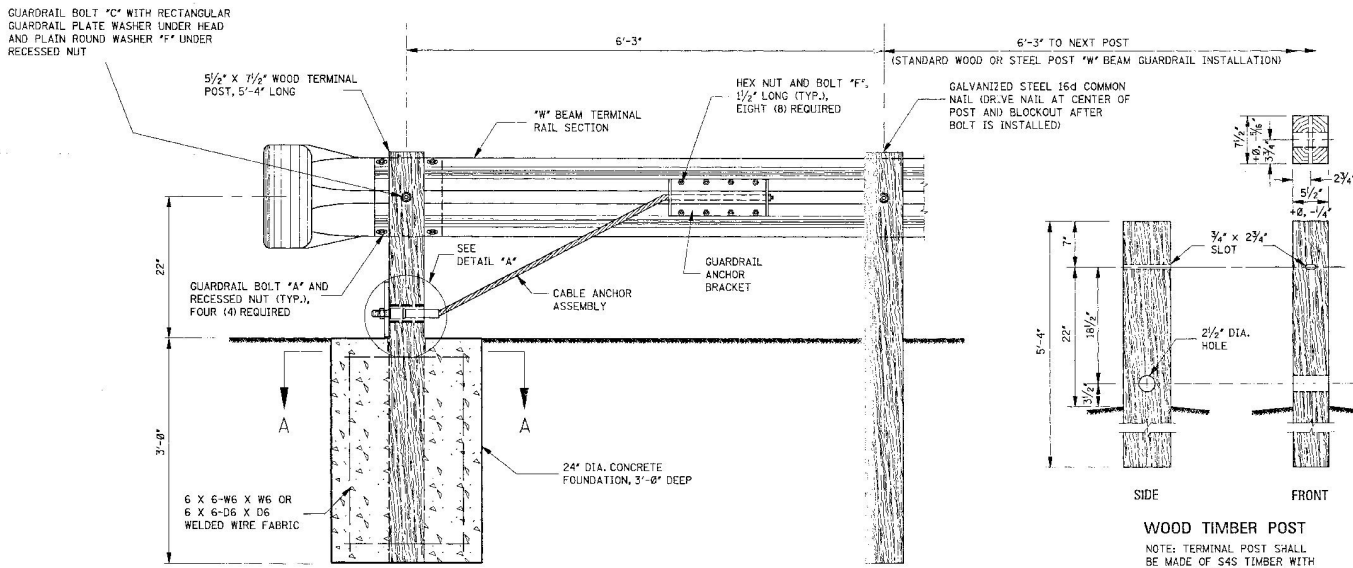
NOTE: THE "POST 2" ASSEMBLY DEPENDS ON WHETHER THE TRAILING END TERMINAL IS ATTACHED TO THE STANDARD WOOD OR STEEL POST "W" BEAM GUARDRAIL INSTALLATION AS FOLLOWS:

- 1. WOOD POST INSTALLATION (SHOWN)**
"W" BEAM TERMINAL RAIL SECTION, 6" X 8" WOOD BLOCKOUT, 14" LONG, AND 6" X 8" WOOD POST, 5'-4" LONG, ATTACHED WITH GUARDRAIL BOLT "D" AND RECESSED NUT. INSTALL RECTANGULAR GUARDRAIL PLATE WASHER UNDER HEAD AND PLAIN ROUND WASHER "F" UNDER RECESSED NUT.
- 2. STEEL POST INSTALLATION**
"W" BEAM TERMINAL RAIL SECTION, 6" X 8" MODIFIED WOOD BLOCKOUT, 14" LONG, AND W6 X 9 STEEL POST, 6'-0" LONG, ATTACHED WITH GUARDRAIL BOLT "C" AND RECESSED NUT. INSTALL RECTANGULAR GUARDRAIL PLATE WASHER UNDER GUARDRAIL BOLT HEAD.



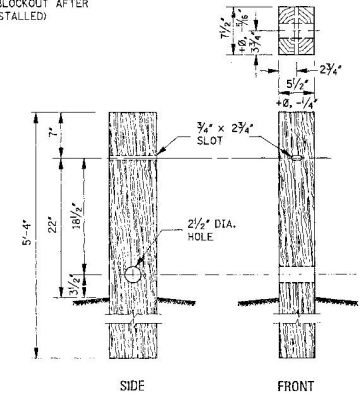
ROUNDED "W" BEAM END SECTION

NOTE: THE CROSS-SECTIONAL DIMENSIONS FOR THIS PART ARE TO FIT OVER THE STANDARD "W" BEAM SECTION.



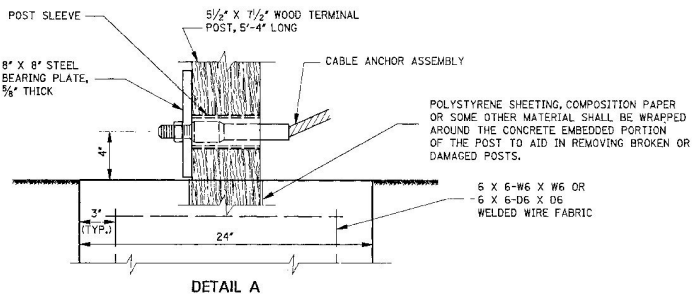
ELEVATION FROM BEHIND GUARDRAIL

NOTE: ANCHOR CABLE SHALL BE TAUT.

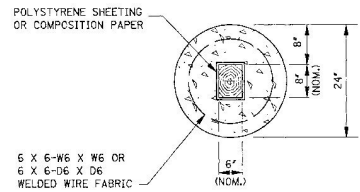


WOOD TIMBER POST

NOTE: TERMINAL POST SHALL BE MADE OF S4S TIMBER WITH STRESS GRADE OF 1200 lb/In².



DETAIL A



SECTION A-A

NOTE: FORM A NOMINAL 6" X 8" SOCKET IN THE FOUNDATION TO RECEIVE THE 5 1/2" X 7 1/2" TIMBER POST. FORM HOLE WITH 1/2" THICK POLYSTYRENE FOAM SHEETING OR WRAP THE TIMBER POST IN A DOUBLE LAYER OF COMPOSITION PAPER. THE LAYER OF SHEETING OR PAPER WILL AID IN REMOVING A DAMAGED POST.

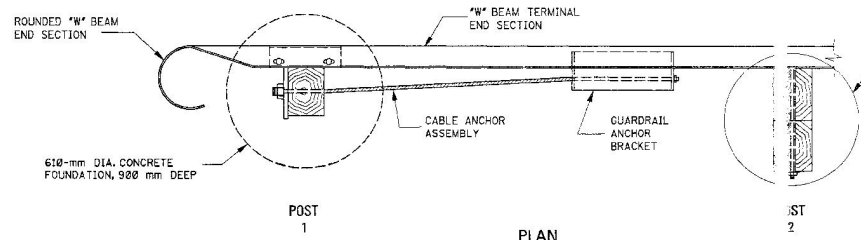
GENERAL NOTES:

- THIS ANCHORAGE MAY ONLY BE USED ON THE TRAILING END OF A BARRIER WHICH IS NOT EXPOSED TO VEHICULAR IMPACT.
- GUARDRAIL SHALL MEET THE REQUIREMENTS OF AASHTO M 188, CLASS A, TYPE 1 UNLESS OTHERWISE DESIGNATED.
- ALL WOOD POSTS AND BLOCKOUTS SHALL BE TREATED TIMBER IN ACCORDANCE WITH MISSISSIPPI DEPARTMENT OF TRANSPORTATION STANDARD SPECIFICATIONS.
- CONCRETE FOR THE CONCRETE FOUNDATION MAY BE EITHER CLASS "B" STRUCTURAL CONCRETE OR AN APPROVED COMMERCIAL PRE-MIXED BAG CONCRETE. THE WELDED WIRE FABRIC FOR THE CONCRETE FOUNDATION SHALL CONFORM TO AASHTO M 221/M 221M AND AASHTO M 55M/M 55.
- FOR DETAILS OF HARDWARE AND COMPONENTS NOT FOUND ON THIS SHEET, SEE SHEETS GR-M1 AND GR-M2.
- DETAILS PERTINENT TO THE STANDARD INSTALLATION OF "W" BEAM SECTIONS WILL BE FOUND ON SHEET GR-1, FOR WOOD POSTS, AND GR-1B, FOR STEEL POSTS.
- FOR OTHER DETAILS OF POSTS, POST ACCESSORIES, FASTENERS AND RAIL ELEMENTS, SEE AASHTO-AGC-ARTBA JOINT TASK FOR NO. 13, TITLED "A GUIDE TO STANDARDIZED HIGHWAY BARRIER HARDWARE," LATEST EDITION.

BY	MISSISSIPPI DEPARTMENT OF TRANSPORTATION ROADWAY DESIGN DIVISION STANDARD PLAN
REVISION	
DATE	ISSUE DATE:

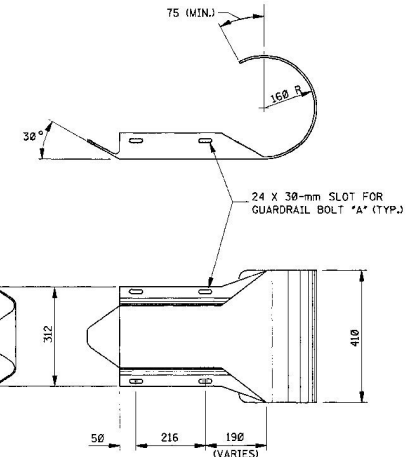
**GUARDRAIL:
TYPE 1 CABLE ANCHORAGE
(CONCRETE FOOTING)**

WORKING NUMBER GR-3A
SHEET NUMBER 193

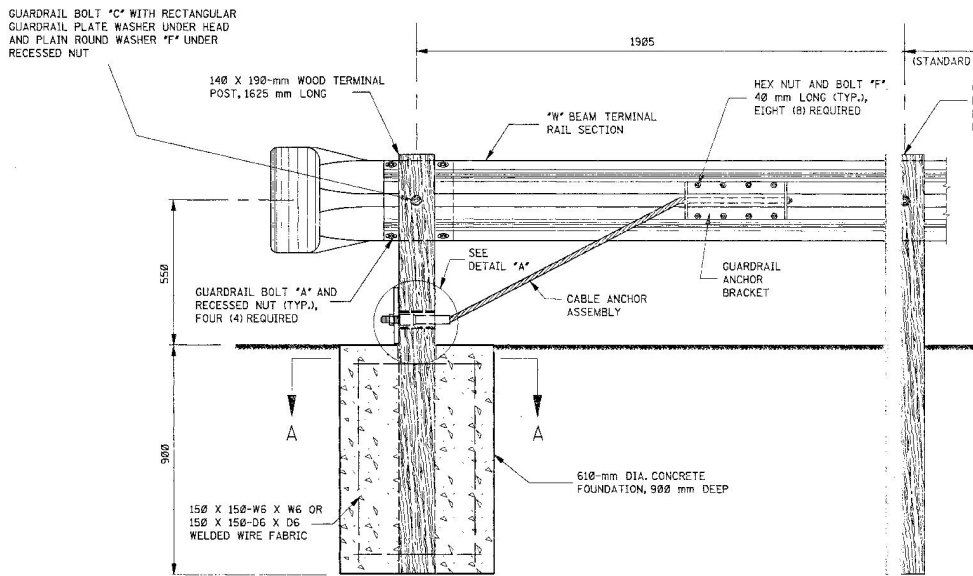


NOTE: THE "POST 2" ASSEMBLY DEPENDS ON WHETHER THE TRAILING END TERMINAL IS ATTACHED TO THE STANDARD WOOD OR STEEL POST "W" BEAM GUARDRAIL INSTALLATION AS FOLLOWS:

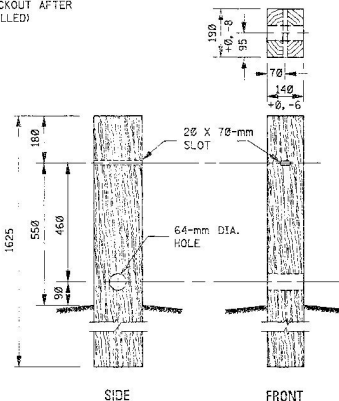
- WOOD POST INSTALLATION (SHOWN)**
"W" BEAM TERMINAL RAIL SECTION, 150 X 200-mm WOOD BLOCKOUT, 360 mm LONG, AND 150 X 200-mm WOOD POST, 1625 mm LONG, ATTACHED WITH GUARDRAIL BOLT "C" AND RECESSED NUT. INSTALL RECTANGULAR GUARDRAIL PLATE WASHER UNDER HEAD AND PLAIN ROUND WASHER "F" UNDER RECESSED NUT.
- STEEL POST INSTALLATION**
"W" BEAM TERMINAL RAIL SECTION, 150 X 200-mm MODIFIED WOOD BLOCKOUT, 360 mm LONG, AND 150 X 13.5 STEEL POST, 1630 mm LONG, ATTACHED WITH GUARDRAIL BOLT "C" AND RECESSED NUT. INSTALL RECTANGULAR GUARDRAIL PLATE WASHER UNDER GUARDRAIL BOLT HEAD.



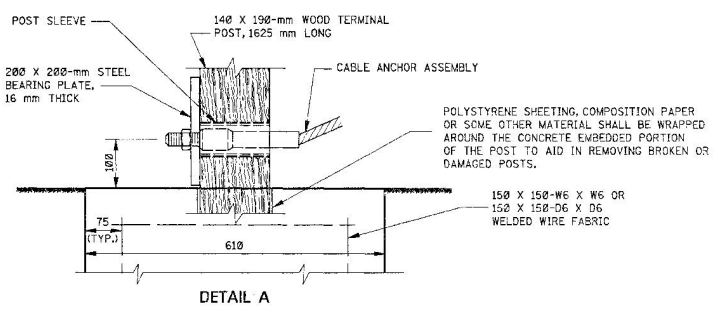
ROUNDED "W" BEAM END SECTION
NOTE: THE CROSS-SECTIONAL DIMENSIONS FOR THIS PART ARE TO FIT OVER THE STANDARD "W" BEAM SECTION.



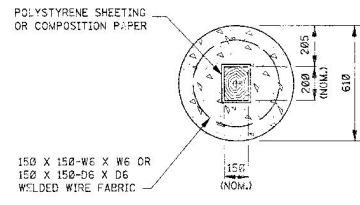
ELEVATION FROM BEHIND GUARDRAIL
NOTE: ANCHOR CABLE SHALL BE TAUT.



WOOD TIMBER POST
NOTE: TERMINAL POST SHALL BE MADE OF S4S TIMBER WITH STRESS GRADE OF 8.27 MPa.



DETAIL A



SECTION A-A

NOTE: FORM A NOMINAL 150 X 200-mm SOCKET IN THE FOUNDATION TO RECEIVE A 150 X 200-mm TIMBER POST. FORM HOLE WITH 12.8 mm THICK POLYSTYRENE FOAM SHEETING OR WRAP A 150 X 200-mm POST IN DOUBLE LAYER OF COMPOSITION PAPER. THE LAYER OF SHEETING OR PAPER WILL AID IN REMOVING A DAMAGED POST.

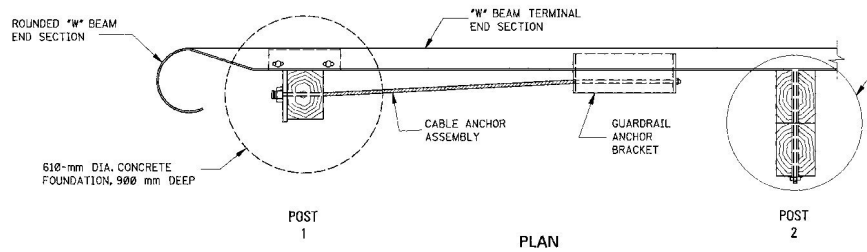
GENERAL NOTES:

- THIS ANCHORAGE MAY ONLY BE USED ON THE TRAILING END OF A BARRIER WHICH IS NOT EXPOSED TO VEHICULAR IMPACT.
- GUARDRAIL SHALL MEET THE REQUIREMENTS OF AASHTO M 180, CLASS A, TYPE 1 UNLESS OTHERWISE DESIGNATED.
- ALL WOOD POSTS AND BLOCKOUTS SHALL BE TREATED TIMBER IN ACCORDANCE WITH MISSISSIPPI DEPARTMENT OF TRANSPORTATION STANDARD SPECIFICATIONS.
- CONCRETE FOR THE CONCRETE FOUNDATION MAY BE EITHER CLASS "B" STRUCTURAL CONCRETE OR AN APPROVED COMMERCIAL PRE-MIXED BAG CONCRETE. THE WELDED WIRE FABRIC FOR THE CONCRETE FOUNDATION SHALL CONFORM TO AASHTO M 221M AND AASHTO M 55M.
- FOR DETAILS OF HARDWARE AND COMPONENTS NOT FOUND ON THIS SHEET, SEE SHEETS GR-M1 AND GR-M2.
- DETAILS PERTINENT TO THE STANDARD INSTALLATION OF "W" BEAM SECTIONS WILL BE FOUND ON SHEET GR-1, FOR WOOD POSTS, AND GR-1B, FOR STEEL POSTS.
- FOR OTHER DETAILS OF POSTS, POST ACCESSORIES, FASTENERS AND RAIL ELEMENTS, SEE AASHTO-AGC-ARTBA JOINT TASK FOR NO. 13, TITLED "A GUIDE TO STANDARDIZED HIGHWAY BARRIER HARDWARE," LATEST EDITION.

ALL DIMENSIONS ARE IN MILLIMETERS (mm) EXCEPT WHERE NOTED.

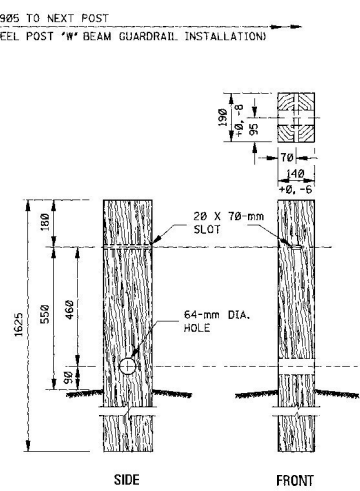
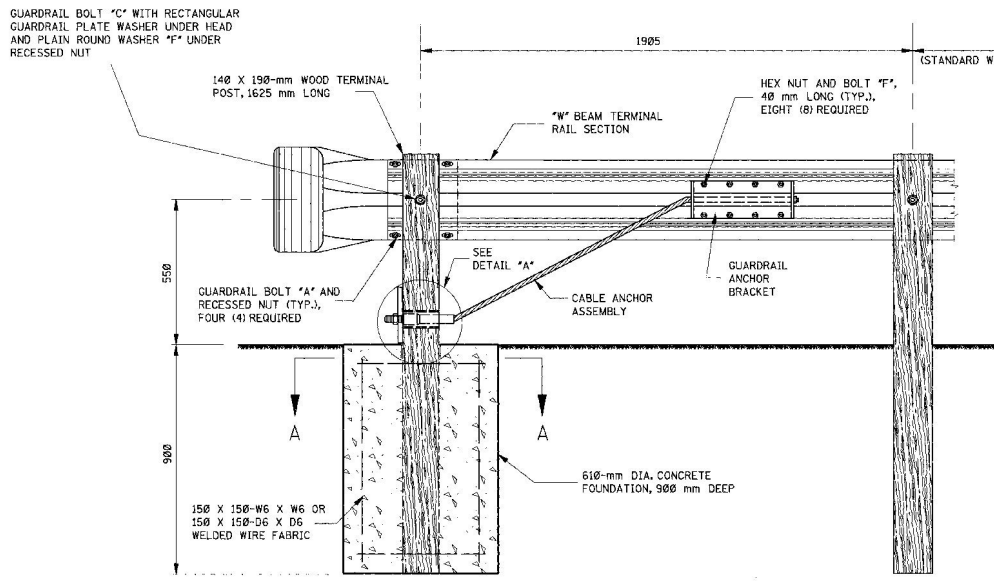
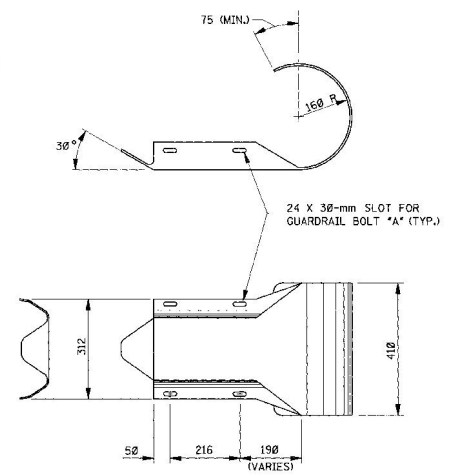
DATE	REVISION	BY	MISSISSIPPI DEPARTMENT OF TRANSPORTATION ROADWAY DESIGN DIVISION STANDARD PLAN
			GUARDRAIL: TYPE 1 CABLE ANCHORAGE (CONCRETE FOOTING)
			WORKING NUMBER GR-3A
			SHEET NUMBER 193
ISSUE DATE:			





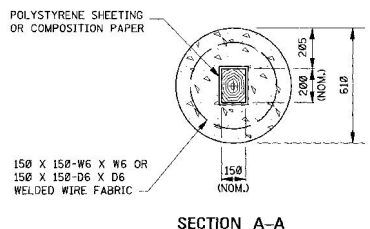
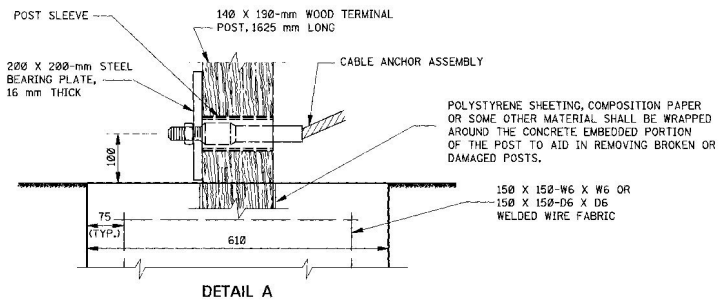
NOTE: THE 'POST 2' ASSEMBLY DEPENDS ON WHETHER THE TRAILING END TERMINAL IS ATTACHED TO THE STANDARD WOOD OR STEEL POST 'W' BEAM GUARDRAIL INSTALLATION AS FOLLOWS:

- WOOD POST INSTALLATION (SHOWN)**
 'W' BEAM TERMINAL RAIL SECTION, 150 X 200-mm WOOD BLOCKOUT, 360 mm LONG, AND 150 X 200-mm WOOD POST, 1625 mm LONG, ATTACHED WITH GUARDRAIL BOLT 'D' AND RECESSED NUT. INSTALL RECTANGULAR GUARDRAIL PLATE WASHER UNDER HEAD AND PLAIN ROUND WASHER 'F' UNDER RECESSED NUT.
- STEEL POST INSTALLATION**
 W150 X 13.5 STEEL BLOCKOUT, 360 mm LONG, ATTACHED TO W150 X 13.5 STEEL POST, 1830 mm LONG, WITH TWO (2) HEX NUT AND BOLT 'F', 40 mm LONG. 'W' BEAM TERMINAL RAIL SECTION ATTACHED TO STEEL BLOCKOUT WITH GUARDRAIL BOLT 'B' AND RECESSED NUT. INSTALL RECTANGULAR GUARDRAIL PLATE WASHER UNDER GUARDRAIL BOLT HEAD.



ROUNDED 'W' BEAM END SECTION
 NOTE: THE CROSS-SECTIONAL DIMENSIONS FOR THIS PART ARE TO FIT OVER THE STANDARD 'W' BEAM SECTION.

- GENERAL NOTES:
- THIS ANCHORAGE MAY ONLY BE USED ON THE TRAILING END OF A BARRIER WHICH IS NOT EXPOSED TO VEHICULAR IMPACT.
 - GUARDRAIL SHALL MEET THE REQUIREMENTS OF AASHTO M 180, CLASS A, TYPE I UNLESS OTHERWISE DESIGNATED.
 - ALL WOOD POSTS AND BLOCKOUTS SHALL BE TREATED TIMBER IN ACCORDANCE WITH MISSISSIPPI DEPARTMENT OF TRANSPORTATION STANDARD SPECIFICATIONS.
 - CONCRETE FOR THE CONCRETE FOUNDATION MAY BE EITHER CLASS 'B' STRUCTURAL CONCRETE OR AN APPROVED COMMERCIAL PRE-MIXED BAG CONCRETE. THE WELDED WIRE FABRIC FOR THE CONCRETE FOUNDATION SHALL CONFORM TO AASHTO M 221M AND AASHTO M 55M.
 - FOR DETAILS OF HARDWARE AND COMPONENTS NOT FOUND ON THIS SHEET, SEE SHEETS CR-MI AND GR-M2.
 - DETAILS PERTINENT TO THE STANDARD INSTALLATION OF 'W' BEAM SECTIONS WILL BE FOUND ON SHEET GR-1, FOR WOOD POSTS, AND GR-1B, FOR STEEL POSTS.
 - FOR OTHER DETAILS OF POSTS, POST ACCESSORIES, FASTENERS AND RAIL ELEMENTS, SEE AASHTO-ACC-ART18A JOINT TASK FOR NO. 13, TITLED 'A GUIDE TO STANDARDIZED HIGHWAY BARRIER HARDWARE,' LATEST EDITION.



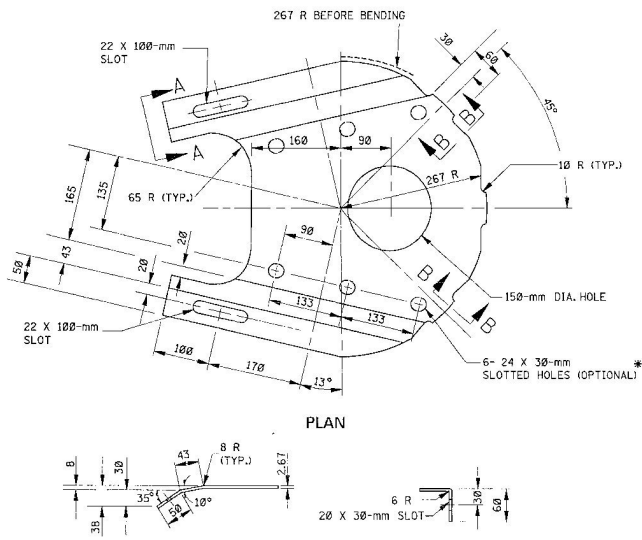
SECTION A-A
 NOTE: FORM A NOMINAL 150 X 200-mm SOCKET IN THE FOUNDATION TO RECEIVE A 150 X 200-mm TIMBER POST. FORM HOLE WITH 12.8 mm THICK POLYSTYRENE FOAM SHEETING OR WRAP A 150 X 200-mm POST IN DOUBLE LAYER OF COMPOSITION PAPER. THE LAYER OF SHEETING OR PAPER WILL AID IN REMOVING A DAMAGED POST.

ALL DIMENSIONS ARE IN MILLIMETERS (mm) EXCEPT WHERE NOTED.
 MISSISSIPPI DEPARTMENT OF TRANSPORTATION
 ROADWAY DESIGN DIVISION
 STANDARD PLAN

**GUARDRAIL:
 TYPE 1 CABLE ANCHORAGE
 (CONCRETE FOOTING)**

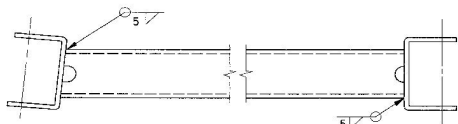


DATE	REVISION	BY



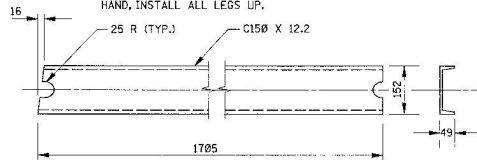
DIAPHRAGM PLATE DETAILS

- NOTES:
- TWO (2) DIAPHRAGM PLATES REQUIRED FOR EACH TERMINAL.
 - OPTIONAL HOLES ARE FOR THE INSERTION OF NOSE EXPANSION BLOCK, WHERE REQUIRED.

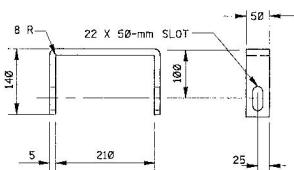


STRUT AND YOKE ASSEMBLY

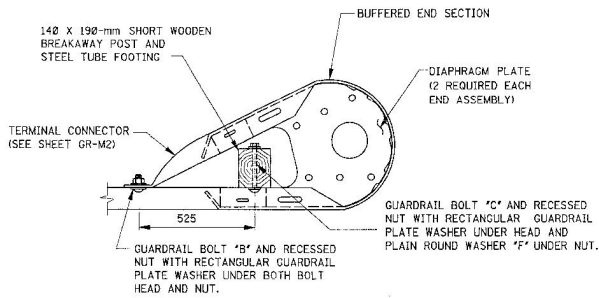
NOTE: SHOWN, LEGS DOWN, FOR OPPOSITE HAND, INSTALL ALL LEGS UP.



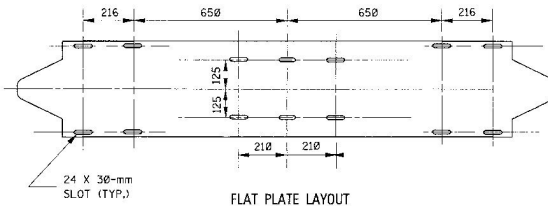
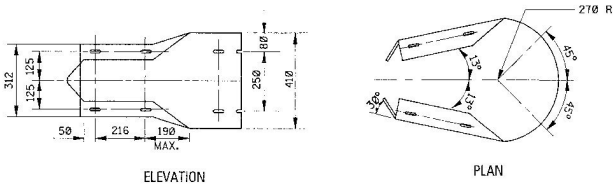
STRUT DETAILS



YOKE DETAILS

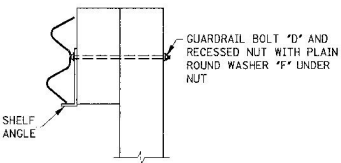


BUFFERED END SECTION ASSEMBLY



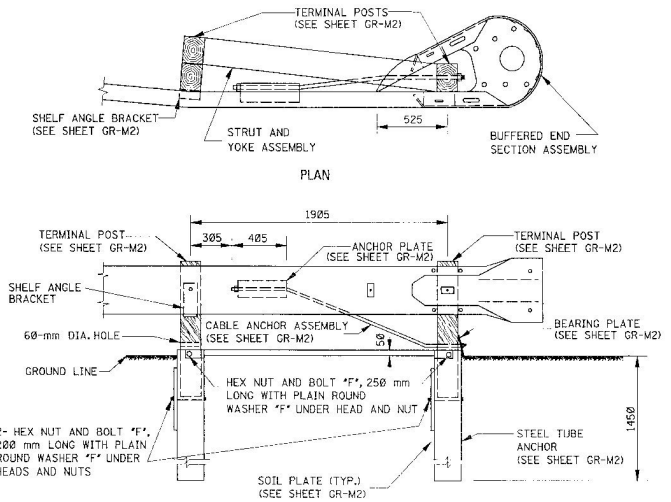
FLAT PLATE LAYOUT

BUFFERED END SECTION DETAILS

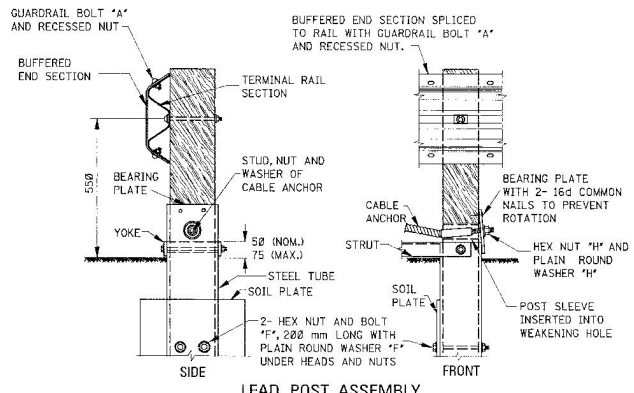


DETAILS OF SHELF ANGLE BRACKET ATTACHMENT

NOTE: RAIL RESTS ON THE SHELF ANGLE BRACKET. GUARDRAIL BOLT 'D' CONNECTS THE SHELF ANGLE BRACKET, BLOCKOUT AND POST BUT NOT THE GUARDRAIL.



ANCHORAGE ASSEMBLY



ALL DIMENSIONS ARE IN MILLIMETERS (mm) EXCEPT WHERE NOTED.

MISSISSIPPI DEPARTMENT OF TRANSPORTATION
ROADWAY DESIGN DIVISION
STANDARD PLAN

DATE	REVISION	BY

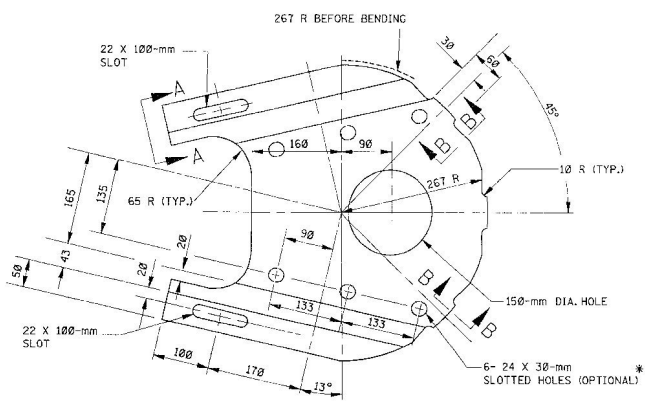
**GUARDRAIL:
MODIFIED ECCENTRIC
LOADER TERMINAL ("MELT")
ANCHORAGE ASSEMBLY**

WORKING NUMBER
GR-M1

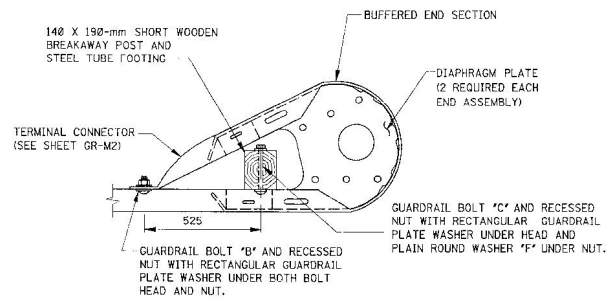
SHEET NUMBER



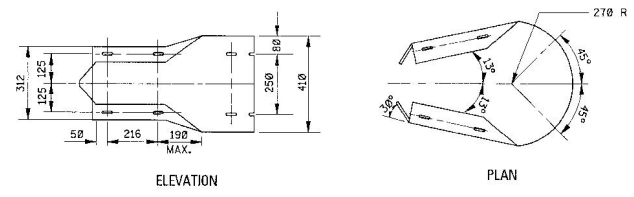
ISSUE DATE: _____



PLAN

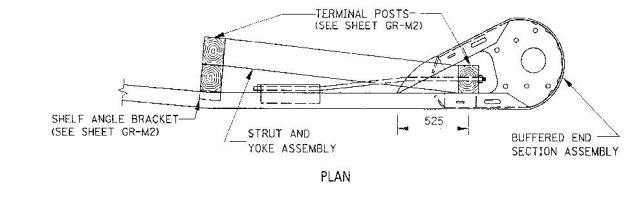


BUFFERED END SECTION ASSEMBLY

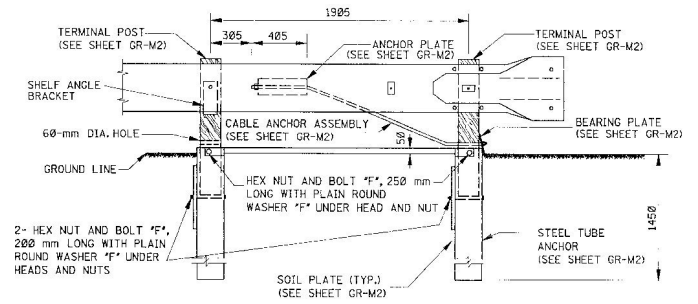


ELEVATION

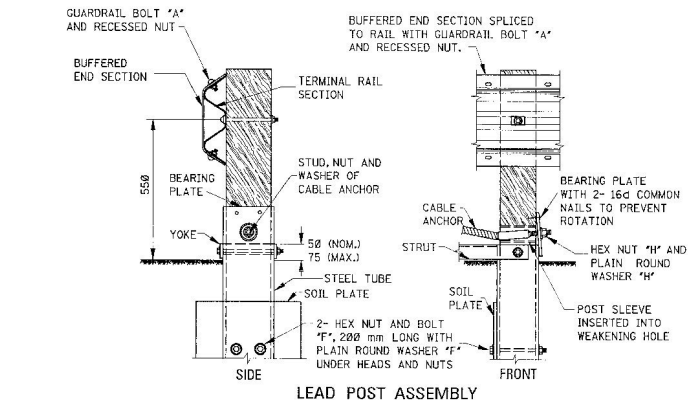
PLAN



PLAN



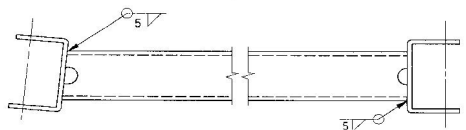
ELEVATION ANCHORAGE ASSEMBLY



SIDE FRONT LEAD POST ASSEMBLY

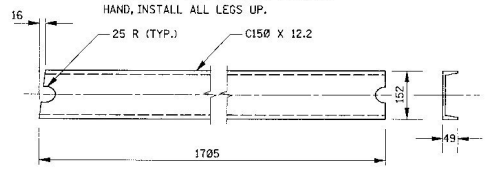
SECTION A-A SECTION B-B DIAPHRAGM PLATE DETAILS

NOTES:
 1. TWO (2) DIAPHRAGM PLATES REQUIRED FOR EACH TERMINAL.
 * 2. OPTIONAL HOLES ARE FOR THE INSERTION OF NOSE EXPANSION BLOCK, WHERE REQUIRED.

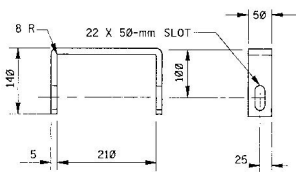


STRUT AND YOKE ASSEMBLY

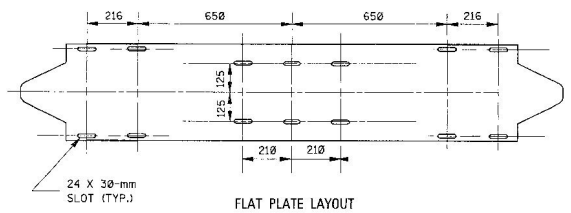
NOTE: SHOWN, LEGS DOWN, FOR OPPOSITE HAND, INSTALL ALL LEGS UP.



STRUT DETAILS

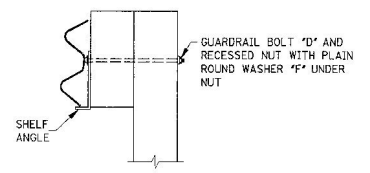


YOKE DETAILS



FLAT PLATE LAYOUT

BUFFERED END SECTION DETAILS



DETAILS OF SHELF ANGLE BRACKET ATTACHMENT

NOTE: RAIL RESTS ON THE SHELF ANGLE BRACKET. GUARDRAIL BOLT 'D' CONNECTS THE SHELF ANGLE BRACKET, BLOCKOUT AND POST BUT NOT THE GUARDRAIL.

ALL DIMENSIONS ARE IN MILLIMETERS (mm) EXCEPT WHERE NOTED.

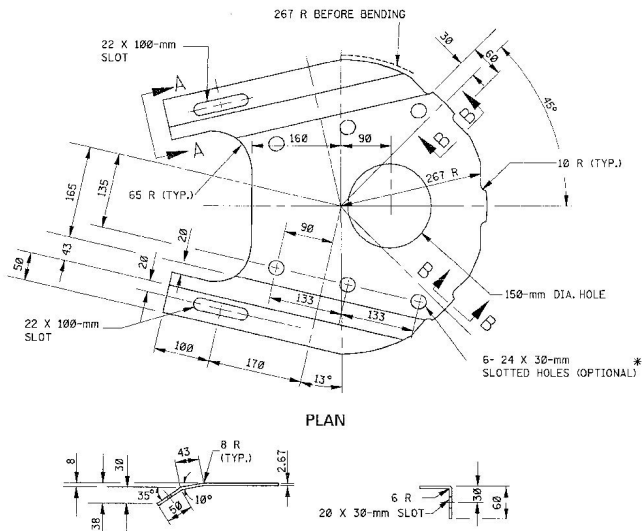
MISSISSIPPI DEPARTMENT OF TRANSPORTATION
 ROADWAY DESIGN DIVISION
 STANDARD PLAN

**GUARDRAIL:
 MODIFIED ECCENTRIC
 LOADER TERMINAL ("MELT")
 ANCHORAGE ASSEMBLY**

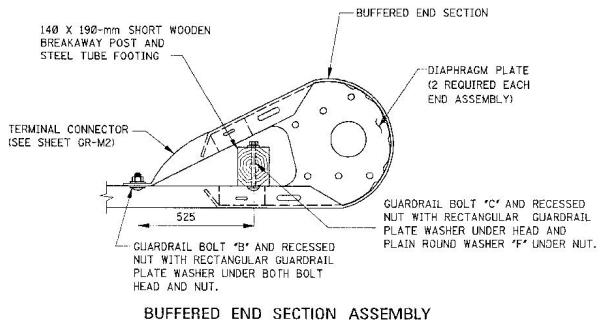


WORKING NUMBER
 GR-M1
 SHEET NUMBER

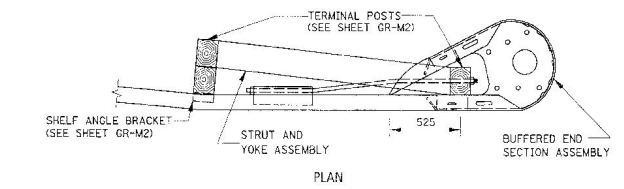
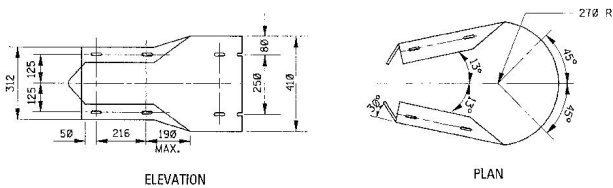
DATE	ISSUE DATE:
REVISION	
BY	



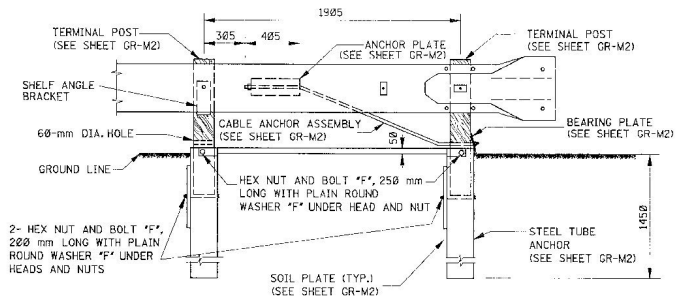
PLAN



BUFFERED END SECTION ASSEMBLY



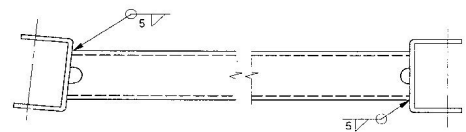
PLAN



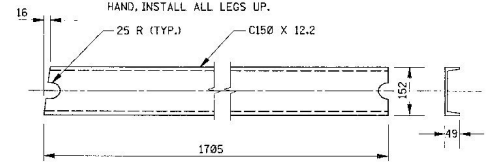
ELEVATION ANCHORAGE ASSEMBLY

SECTION A-A SECTION B-B
DIAPHRAGM PLATE DETAILS

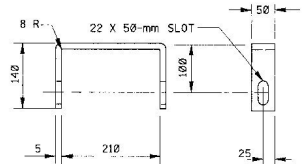
- NOTES:
1. TWO (2) DIAPHRAGM PLATES REQUIRED FOR EACH TERMINAL.
* 2. OPTIONAL HOLES ARE FOR THE INSERTION OF NOSE EXPANSION BLOCK, WHERE REQUIRED.



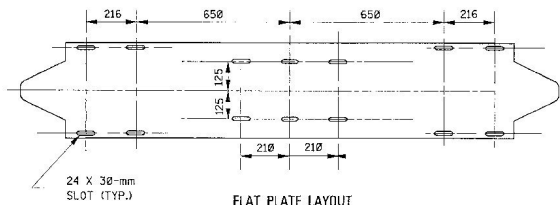
STRUT AND YOKE ASSEMBLY
NOTE: SHOWN, LEGS DOWN, FOR OPPOSITE HAND, INSTALL ALL LEGS UP.



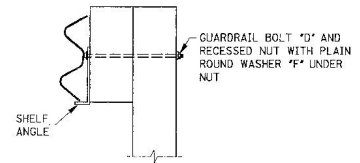
STRUT DETAILS



YOKE DETAILS

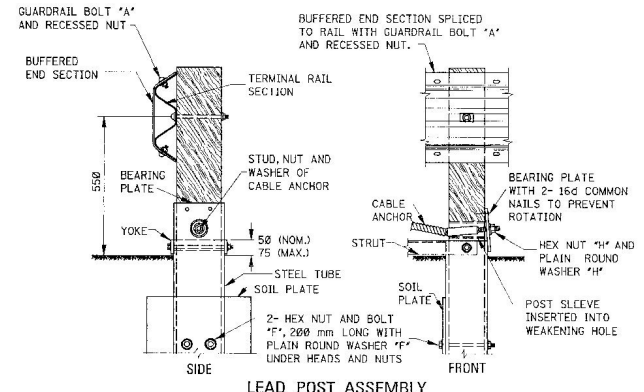


FLAT PLATE LAYOUT
BUFFERED END SECTION DETAILS



DETAILS OF SHELF ANGLE BRACKET ATTACHMENT

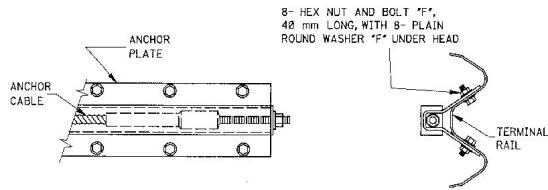
NOTE: RAIL RESTS ON THE SHELF ANGLE BRACKET. GUARDRAIL BOLT "D" CONNECTS THE SHELF ANGLE BRACKET, BLOCKOUT AND POST BUT NOT THE GUARDRAIL.



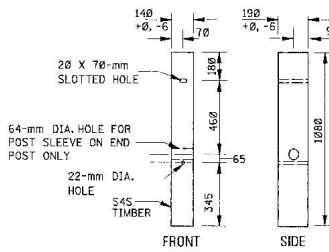
LEAD POST ASSEMBLY

ALL DIMENSIONS ARE IN MILLIMETERS (mm) EXCEPT WHERE NOTED.

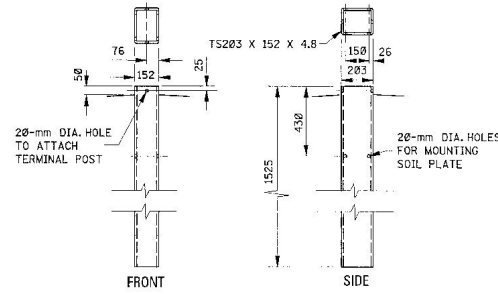
BY	MISSISSIPPI DEPARTMENT OF TRANSPORTATION ROADWAY DESIGN DIVISION STANDARD PLAN
REVISION	
DATE	
<p>GUARDRAIL: MODIFIED ECCENTRIC LOADER TERMINAL ("MELT") ANCHORAGE ASSEMBLY</p>	
<p>WORKING NUMBER GR-M1 SHEET NUMBER</p>	
<p>ISSUE DATE: _____</p>	



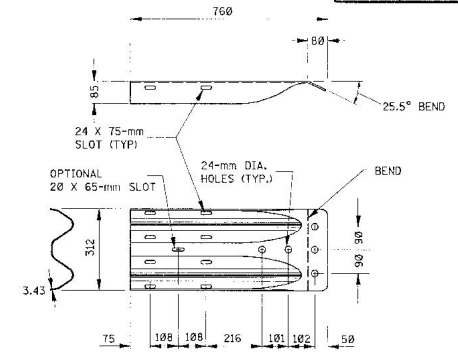
ANCHOR PLATE ASSEMBLY DETAILS



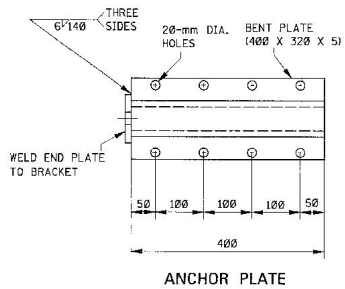
TERMINAL POST



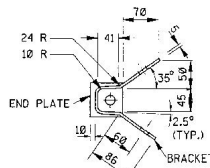
STEEL TUBE ANCHOR



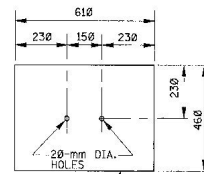
"W" BEAM TERMINAL CONNECTOR PLATE



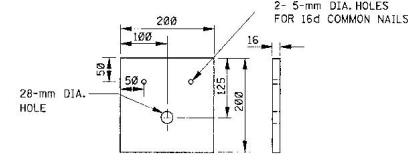
ANCHOR PLATE



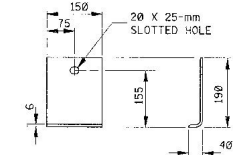
BRACKET



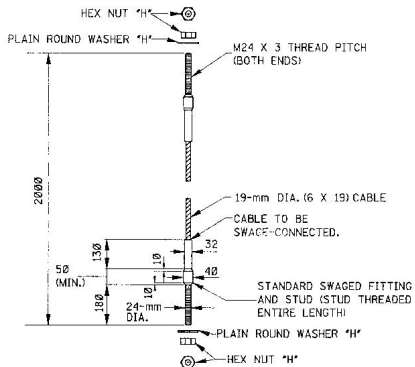
SOIL PLATE



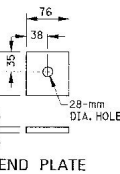
BEARING PLATE



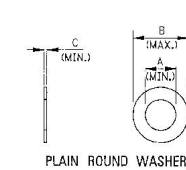
SHELF ANGLE BRACKET



CABLE ANCHOR ASSEMBLY

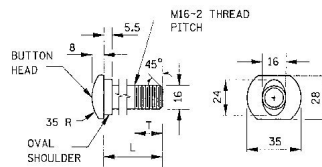


END PLATE

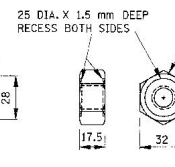


PLAIN ROUND WASHER

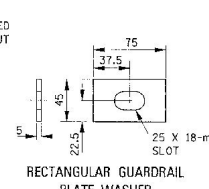
WASHER	A (MIN.)	B (MAX.)	C (MIN.)
"F"	17.25	44.00	3.00
"H"	25.60	56.00	4.00



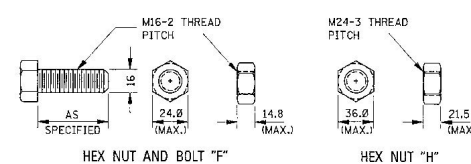
GUARDRAIL BOLT



RECESSED NUT



RECTANGULAR GUARDRAIL PLATE WASHER



NOTES:

1. ALL GUARDRAIL BOLTS ARE M16-2 THREAD PITCH.
2. IF ANY BOLT EXTENDS MORE THAN 6 mm FROM THE NUT, THE BOLT SHOULD BE TRIMMED BACK.

FASTENER DETAILS

ALL DIMENSIONS ARE IN MILLIMETERS (mm) EXCEPT WHERE NOTED.

MISSISSIPPI DEPARTMENT OF TRANSPORTATION
ROADWAY DESIGN DIVISION
STANDARD PLAN

**GUARDRAIL:
MODIFIED ECCENTRIC
LOADER TERMINAL ("MELT")
ANCHORAGE ASSEMBLY
DETAILS**

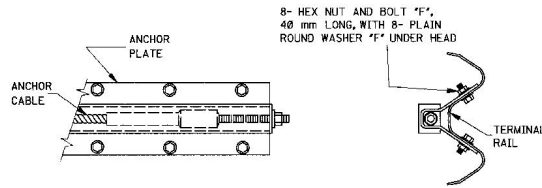
DATE: _____ BY: _____

REVISION: _____

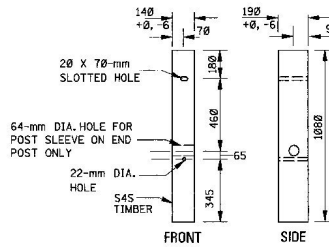
ISSUE DATE: _____

WORKING NUMBER: GR-M2

SHEET NUMBER: _____

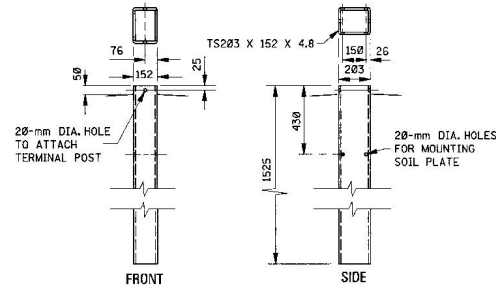


ANCHOR PLATE ASSEMBLY DETAILS



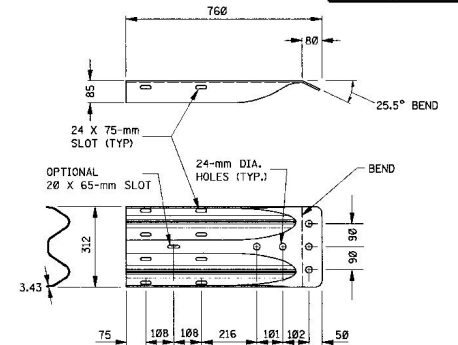
TERMINAL POST

NOTE: TERMINAL POST SHALL BE MADE OF S4S TIMBER WITH STRESS GRADE OF 8.27 MPaG.



STEEL TUBE ANCHOR

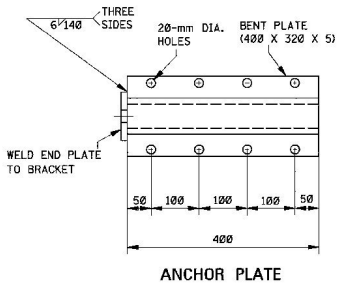
NOTE: TERMINAL POST SHOULD BE ABLE TO SLIDE INTO THE TOP OF THIS SECTION SO THE ACTUAL INSIDE DIMENSIONS OF THIS GALVANIZED TUBE CANNOT BE LESS THAN 190 X 140 mm.



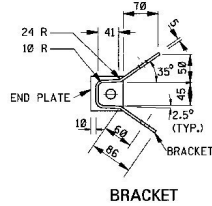
"W" BEAM TERMINAL CONNECTOR PLATE

NOTES:

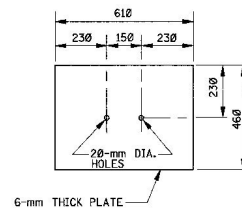
- THE "W" BEAM TERMINAL CONNECTOR IS TO BE AASHTO M 100 CORRUGATED SHEET STEEL, CLASS B, TYPE 1.
- SPLICE-BOLT SLOTS MAY ALSO BE ORIENTED AT 50° (ON THE FLAT) INSTEAD OF 0° AS SHOWN.



ANCHOR PLATE

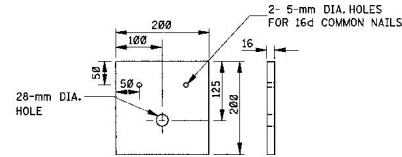


BRACKET

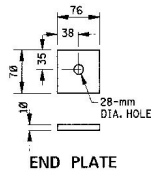


SOIL PLATE

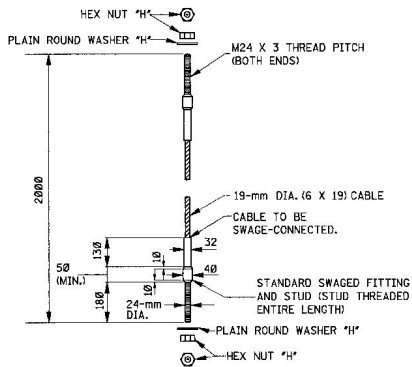
NOTE: 2 REQUIRED



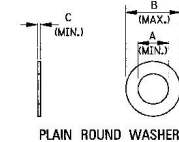
BEARING PLATE



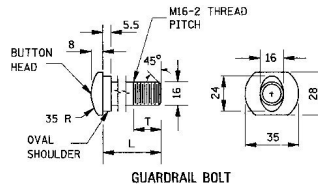
END PLATE



CABLE ANCHOR ASSEMBLY



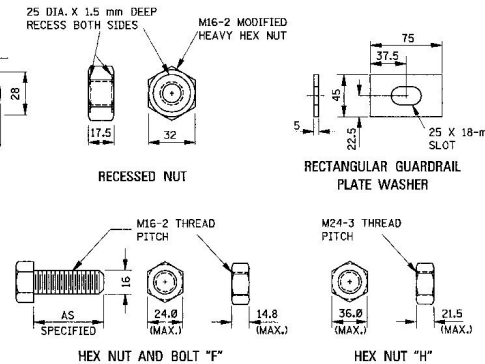
WASHER	A (MIN.)	B (MAX.)	C (MIN.)
F	17.25	44.00	3.00
H	25.60	56.00	4.00



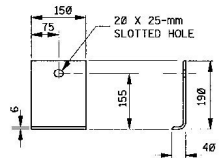
BOLT	L (MIN.)	T (MIN.)
A	35	30
B	50	45
C	255	100
D	460	100

NOTES:

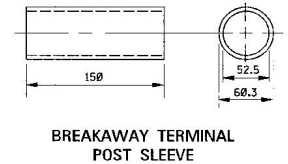
- ALL GUARDRAIL BOLTS ARE M16-2 THREAD PITCH.
- IF ANY BOLT EXTENDS MORE THAN 6 mm FROM THE NUT, THE BOLT SHOULD BE TRIMMED BACK.



FASTENER DETAILS



SHELF ANGLE BRACKET



BREAKAWAY TERMINAL POST SLEEVE

ALL DIMENSIONS ARE IN MILLIMETERS (mm) EXCEPT WHERE NOTED.

MISSISSIPPI DEPARTMENT OF TRANSPORTATION
ROADWAY DESIGN DIVISION
STANDARD PLAN

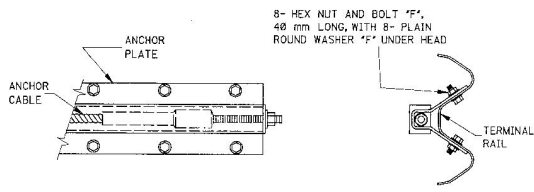
**GUARDRAIL:
MODIFIED ECCENTRIC
LOADER TERMINAL ("MELT")
ANCHORAGE ASSEMBLY
DETAILS**



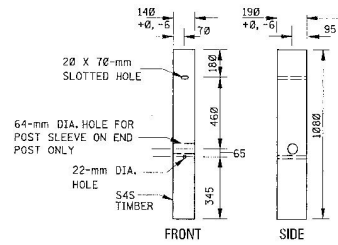
WORKING NUMBER
GR-M2
SHEET NUMBER

ISSUE DATE: _____

DATE	REVISION	BY

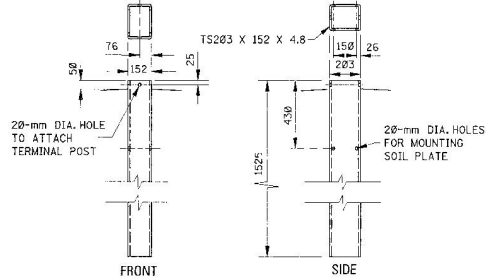


ANCHOR PLATE ASSEMBLY DETAILS



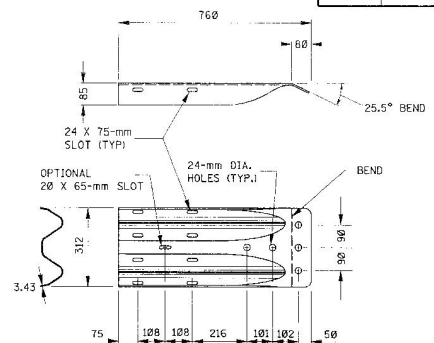
TERMINAL POST

NOTE: TERMINAL POST SHALL BE MADE OF S4S TIMBER WITH STRESS GRADE OF 8.27 MPa.



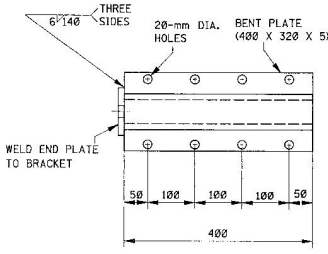
STEEL TUBE ANCHOR

NOTE: TERMINAL POST SHOULD BE ABLE TO SLIDE INTO THE TOP OF THIS SECTION SO THE ACTUAL INSIDE DIMENSIONS OF THIS GALVANIZED TUBE CANNOT BE LESS THAN 190 X 140 mm.

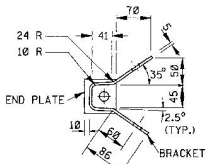


"W" BEAM TERMINAL CONNECTOR PLATE

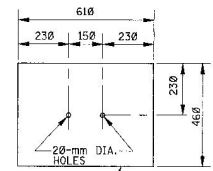
NOTES:
1. THE "W" BEAM TERMINAL CONNECTOR IS TO BE AASHTO M 180 CORRUGATED SHEET STEEL, CLASS B, TYPE 1.
2. SPLICE-BOLT SLOTS MAY ALSO BE ORIENTED AT 50° (ON THE FLAT) INSTEAD OF 0° AS SHOWN.



ANCHOR PLATE

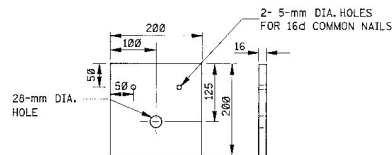


BRACKET

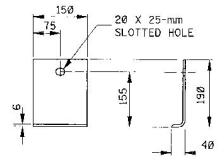


SOIL PLATE

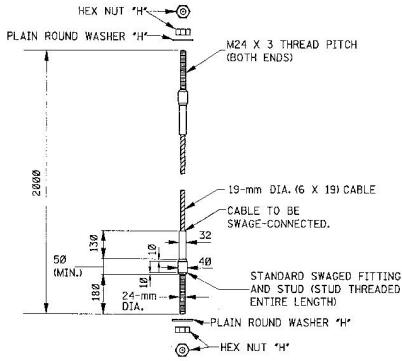
NOTE: 2 REQUIRED



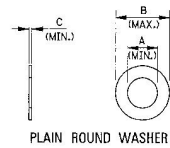
BEARING PLATE



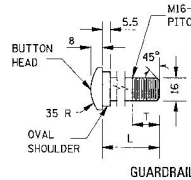
SHELF ANGLE BRACKET



CABLE ANCHOR ASSEMBLY



WASHER	A (MIN.)	B (MAX.)	C (MIN.)
"F"	17.25	44.00	3.00
"H"	25.60	56.00	4.00

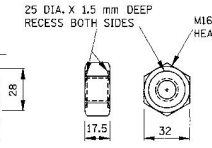


GUARDRAIL BOLT

BOLT	L	T (MIN.)
"A"	35	30
"B"	50	45
"C"	255	100
"D"	450	100

NOTES:

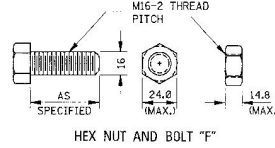
1. ALL GUARDRAIL BOLTS ARE M16-2 THREAD PITCH.
2. IF ANY BOLT EXTENDS MORE THAN 6 mm FROM THE NUT, THE BOLT SHOULD BE TRIMMED BACK.



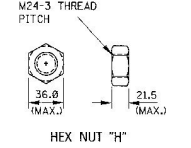
RECESSED NUT



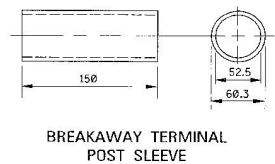
RECTANGULAR GUARDRAIL PLATE WASHER



HEX NUT AND BOLT "F"



HEX NUT "H"



BREAKAWAY TERMINAL POST SLEEVE

ALL DIMENSIONS ARE IN MILLIMETERS (mm) EXCEPT WHERE NOTED.

MISSISSIPPI DEPARTMENT OF TRANSPORTATION
ROADWAY DESIGN DIVISION
STANDARD PLAN

**GUARDRAIL:
MODIFIED ECCENTRIC
LOADER TERMINAL ("MELT")
ANCHORAGE ASSEMBLY
DETAILS**

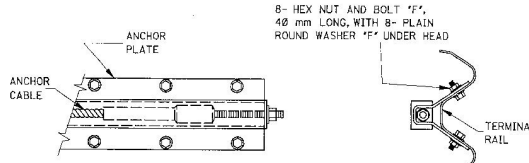


DATE	REVISION	BY

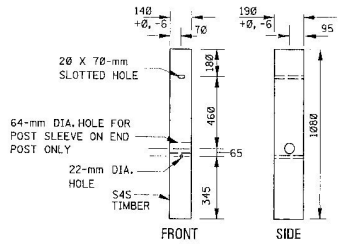
ISSUE DATE:

WORKING NUMBER
GR-M2

SHEET NUMBER

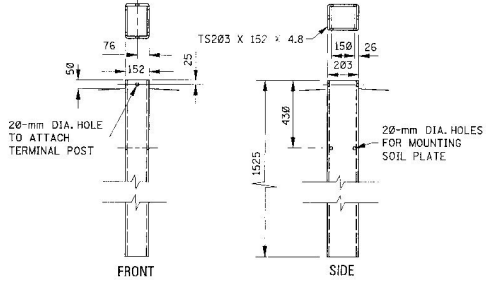


ANCHOR PLATE ASSEMBLY DETAILS



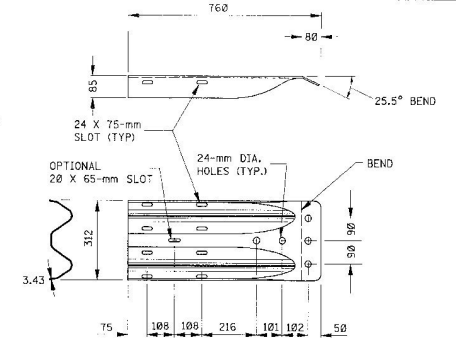
TERMINAL POST

NOTE: TERMINAL POST SHALL
BE MADE OF S4S TIMBER WITH
STRESS GRADE OF 0.27 MPa.



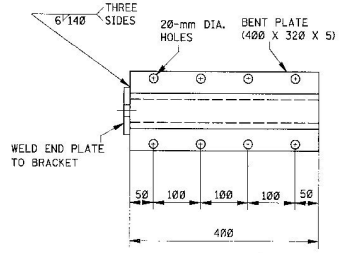
STEEL TUBE ANCHOR

NOTE: TERMINAL POST SHOULD BE ABLE TO
SLIDE INTO THE TOP OF THIS SECTION SO THE
ACTUAL INSIDE DIMENSIONS OF THIS GALVANIZED
TUBE CANNOT BE LESS THAN 190 X 140 mm.

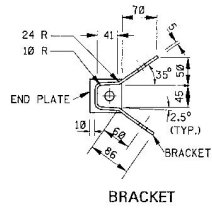


"W" BEAM TERMINAL CONNECTOR PLATE

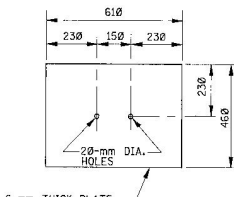
NOTES:
1. THE "W" BEAM TERMINAL CONNECTOR IS TO BE
AASHTO M 180 CORRUGATED SHEET STEEL, CLASS B,
TYPE 1.
2. SPLICE-BOLT SLOTS MAY ALSO BE ORIENTED AT
50° (ON THE FLAT) INSTEAD OF 0° AS SHOWN.



ANCHOR PLATE

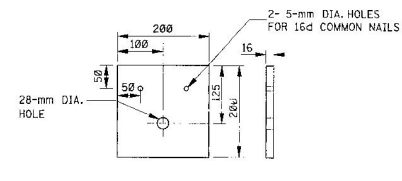


BRACKET

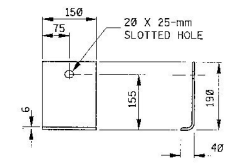


SOIL PLATE

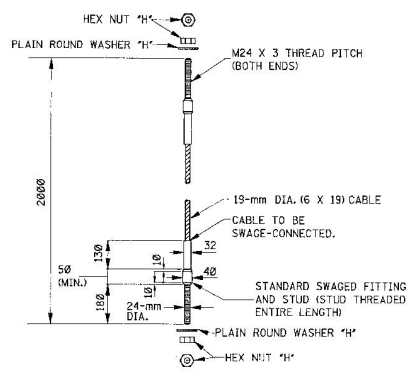
NOTE: 2 REQUIRED



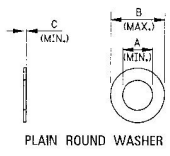
BEARING PLATE



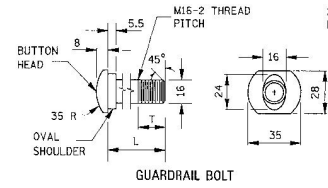
SHELF ANGLE BRACKET



CABLE ANCHOR ASSEMBLY



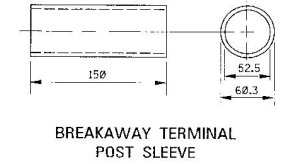
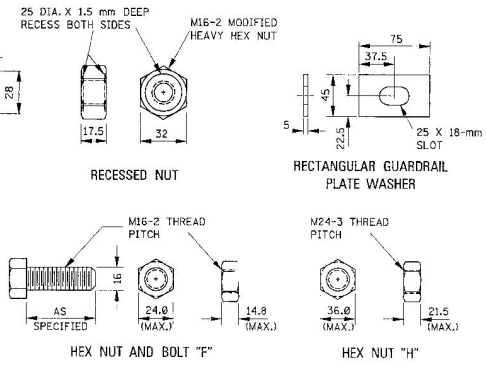
WASHER	A (MIN.)	B (MAX.)	C (MIN.)
"F"	17.25	44.00	3.00
"H"	25.60	56.00	4.00



GUARDRAIL BOLTS		
BOLT	L	T (MIN.)
"A"	35	30
"B"	50	45
"C"	255	100
"D"	460	100

NOTES:
1. ALL GUARDRAIL BOLTS ARE M16-2
THREAD PITCH.
2. IF ANY BOLT EXTENDS MORE
THAN 6 mm FROM THE NUT, THE BOLT
SHOULD BE TRIMMED BACK.

FASTENER DETAILS



ALL DIMENSIONS ARE IN MILLIMETERS (mm) EXCEPT WHERE NOTED.

MISSISSIPPI DEPARTMENT OF TRANSPORTATION
ROADWAY DESIGN DIVISION
STANDARD PLAN

**GUARDRAIL:
MODIFIED ECCENTRIC
LOADER TERMINAL ("MELT")
ANCHORAGE ASSEMBLY
DETAILS**

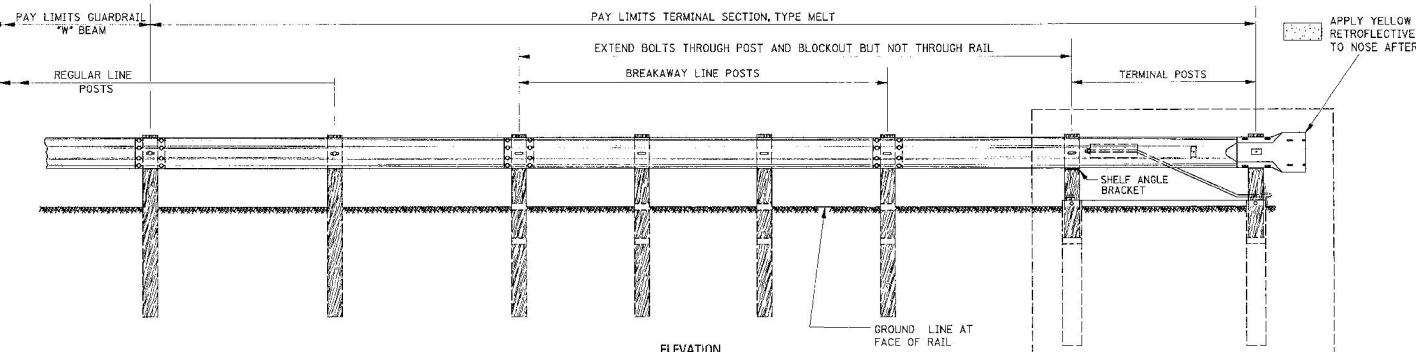
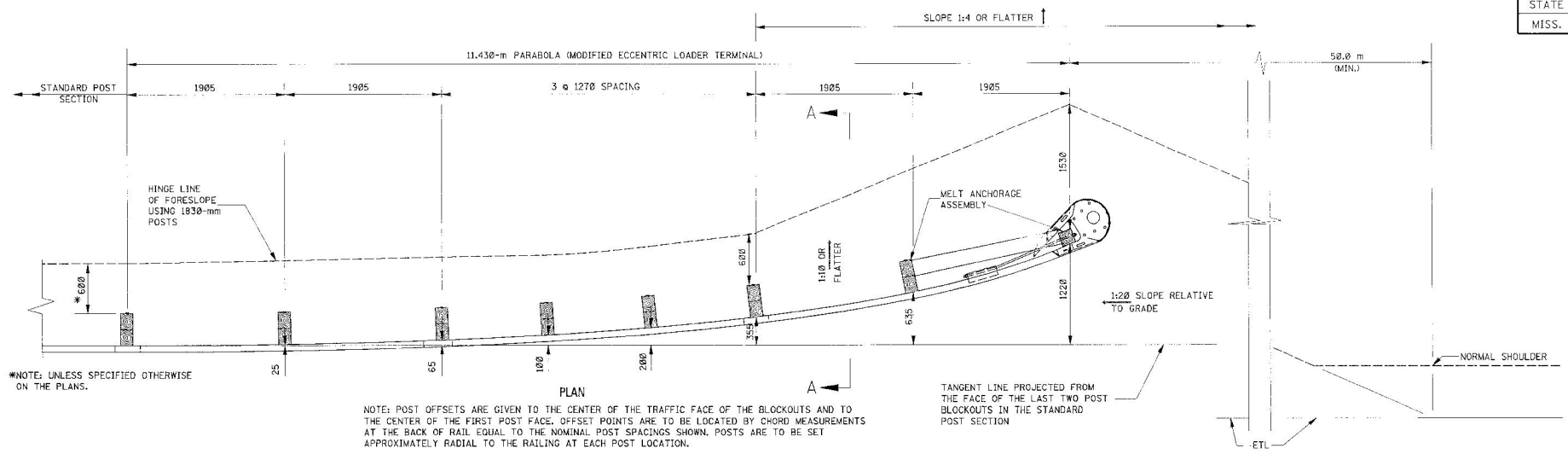


DATE	REVISION	BY

ISSUE DATE:

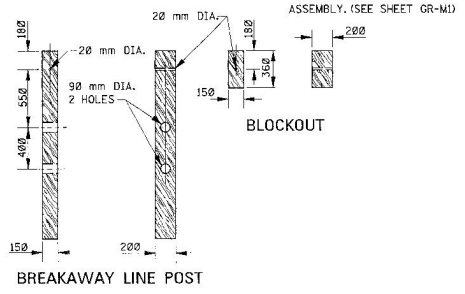
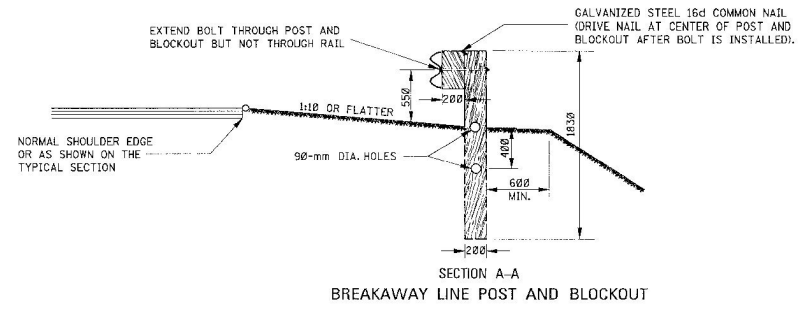
WORKING NUMBER
GR-M2
SHEET NUMBER

STATE	PROJECT NO.
MISS.	



- GENERAL NOTES:
1. GUARDRAIL SHALL MEET THE REQUIREMENTS OF AASHTO M 188, CLASS A, TYPE 1 UNLESS OTHERWISE DESIGNATED.
 2. GUARDRAIL SECTIONS SHALL BE LAPPED IN THE DIRECTION OF TRAFFIC FLOW FOR THE LANE NEAREST THE GUARDRAIL.
 3. ALL ANGLES, CHANNELS AND PLATES SHALL CONFORM TO THE REQUIREMENTS OF ASTM A 500 OR ASTM A 513 GRADE 1008. DIAPHRAGM PLATE SHALL CONFORM TO ASTM A 36M OR AASHTO M 188. WELDING SHALL MEET THE CURRENT REQUIREMENTS OF THE AMERICAN WELDING SOCIETY STRUCTURAL WELDING CODE ANSI/AASHTO/AWS D15. ALL STRUCTURAL STEEL SHALL BE GALVANIZED IN ACCORDANCE WITH ASTM A 123. NO PUNCHING, DRILLING OR CUTTING WILL BE PERMITTED AFTER GALVANIZING EXCEPT FOR HOLES TO MOUNT GUARDRAIL DELINEATORS.
 4. ALL WOOD POSTS AND BLOCKOUTS SHALL BE TREATED TIMBER IN ACCORDANCE WITH MISSISSIPPI DEPARTMENT OF TRANSPORTATION STANDARD SPECIFICATIONS.
 5. FOR HARDWARE COMPONENT AND ASSEMBLY DETAILS SPECIFIC TO THE MELT TERMINAL SECTION, SEE SHEETS GR-M AND GR-M2.
 6. FOR OTHER DETAILS OF POSTS, POST ACCESSORIES, FASTENERS & RAIL ELEMENTS, SEE AASHTO-AGC-ARTBA JOINT TASK FORCE NO. 13, TITLED "A GUIDE TO STANDARDIZED HIGHWAY BARRIER HARDWARE," LATEST EDITION.

APPROACH & DEPARTURE FLARE WITH MODIFIED ECCENTRIC LOADER TERMINAL (MELT)



ALL DIMENSIONS ARE IN MILLIMETERS (mm) EXCEPT WHERE NOTED.

MISSISSIPPI DEPARTMENT OF TRANSPORTATION
ROADWAY DESIGN DIVISION
STANDARD PLAN

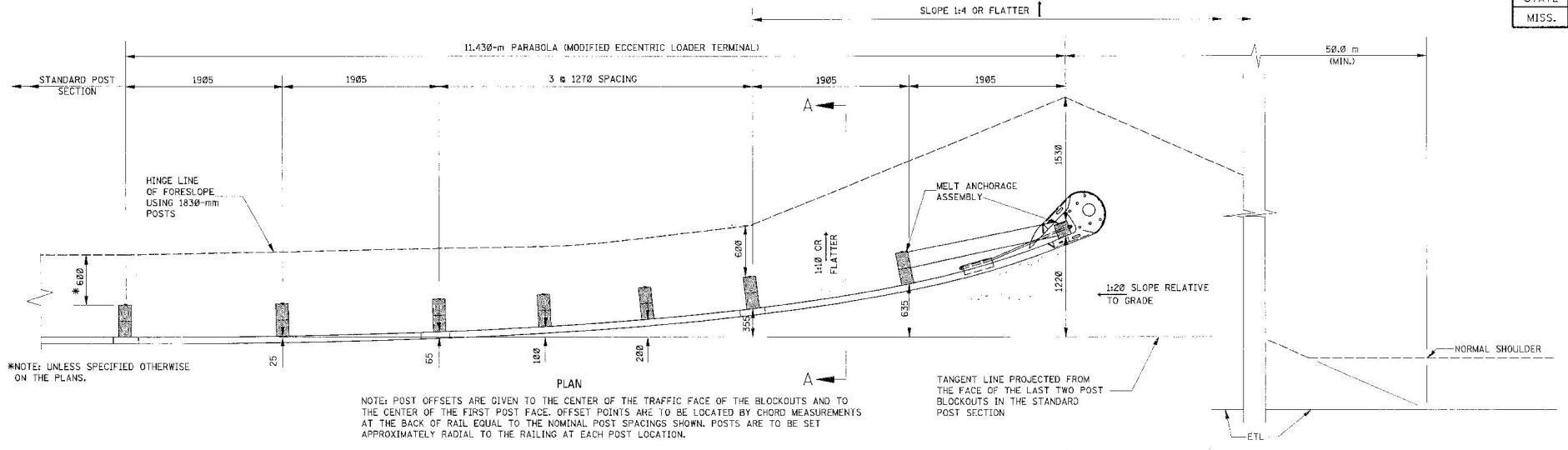
**GUARDRAIL:
MODIFIED ECCENTRIC
LOADER TERMINAL
("MELT")**

WORKING NUMBER
GR-M3
SHEET NUMBER

DATE: _____
REVISION: _____
ISSUE DATE: _____

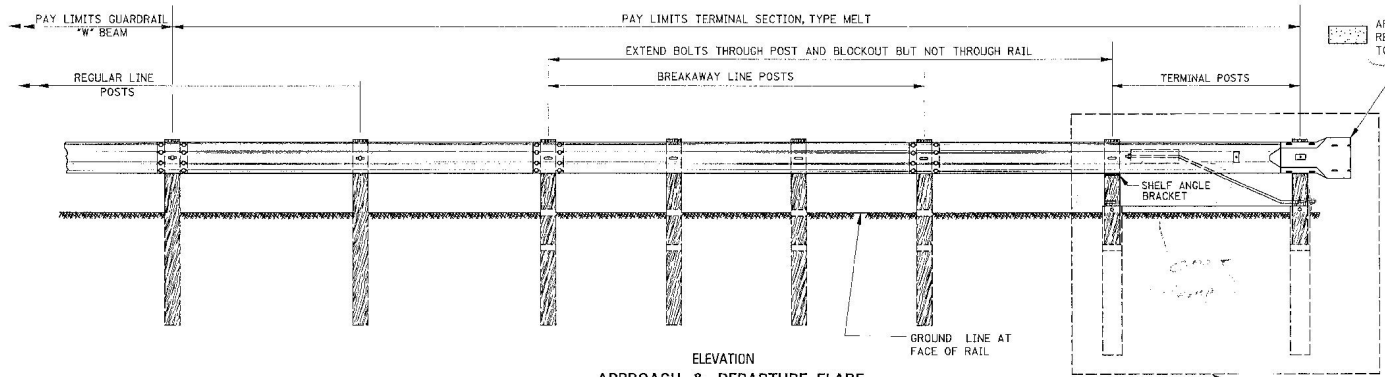


STATE	PROJECT NO.
MISS.	



*NOTE: UNLESS SPECIFIED OTHERWISE ON THE PLANS.

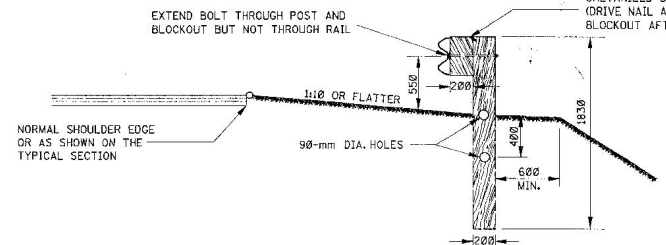
NOTE: POST OFFSETS ARE GIVEN TO THE CENTER OF THE TRAFFIC FACE OF THE BLOCKOUTS AND TO THE CENTER OF THE FIRST POST FACE. OFFSET POINTS ARE TO BE LOCATED BY CHORD MEASUREMENTS AT THE BACK OF RAIL EQUAL TO THE NOMINAL POST SPACINGS SHOWN. POSTS ARE TO BE SET APPROXIMATELY RADIAL TO THE RAILING AT EACH POST LOCATION.



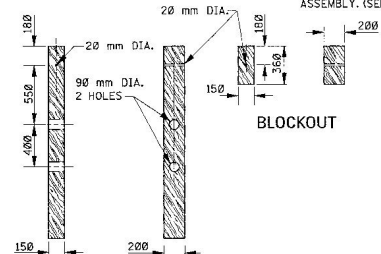
GENERAL NOTES:

1. GUARDRAIL SHALL MEET THE REQUIREMENTS OF AASHTO M 188, CLASS A, TYPE 1 UNLESS OTHERWISE DESIGNATED.
2. GUARDRAIL SECTIONS SHALL BE LAPPED IN THE DIRECTION OF TRAFFIC FLOW FOR THE LANE NEAREST THE GUARDRAIL.
3. ALL ANGLES, CHANNELS AND PLATES SHALL CONFORM TO THE REQUIREMENTS OF ASTM A 500 OR ASTM A 513 GRADE 100B. DIAPHRAGM PLATE SHALL CONFORM TO ASTM A 36M OR AASHTO M 188. WELDING SHALL MEET THE CURRENT REQUIREMENTS OF THE AMERICAN WELDING SOCIETY STRUCTURAL WELDING CODE ANSI/AASHTO/AWS D15. ALL STRUCTURAL STEEL SHALL BE GALVANIZED IN ACCORDANCE WITH ASTM A 123. NO PUNCHING, DRILLING OR CUTTING WILL BE PERMITTED AFTER GALVANIZING EXCEPT FOR HOLES TO MOUNT GUARDRAIL DELINEATORS.
4. ALL WOOD POSTS AND BLOCKOUTS SHALL BE TREATED TIMBER IN ACCORDANCE WITH MISSISSIPPI DEPARTMENT OF TRANSPORTATION STANDARD SPECIFICATIONS.
5. FOR HARDWARE COMPONENT AND ASSEMBLY DETAILS SPECIFIC TO THE MELT TERMINAL SECTION, SEE SHEETS GR-M1 AND GR-M2.
6. FOR OTHER DETAILS OF POSTS, POST ACCESSORIES, FASTENERS & RAIL ELEMENTS, SEE AASHTO-AGC-ARTBA JOINT TASK FORCE NO. 13, TITLED "A GUIDE TO STANDARDIZED HIGHWAY BARRIER HARDWARE," LATEST EDITION.


ALL DIMENSIONS ARE IN MILLIMETERS (mm) EXCEPT WHERE NOTED.



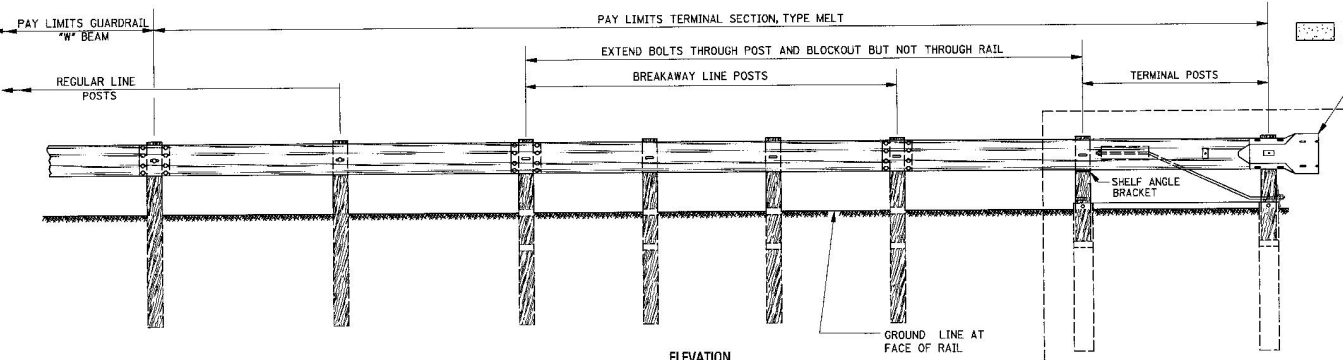
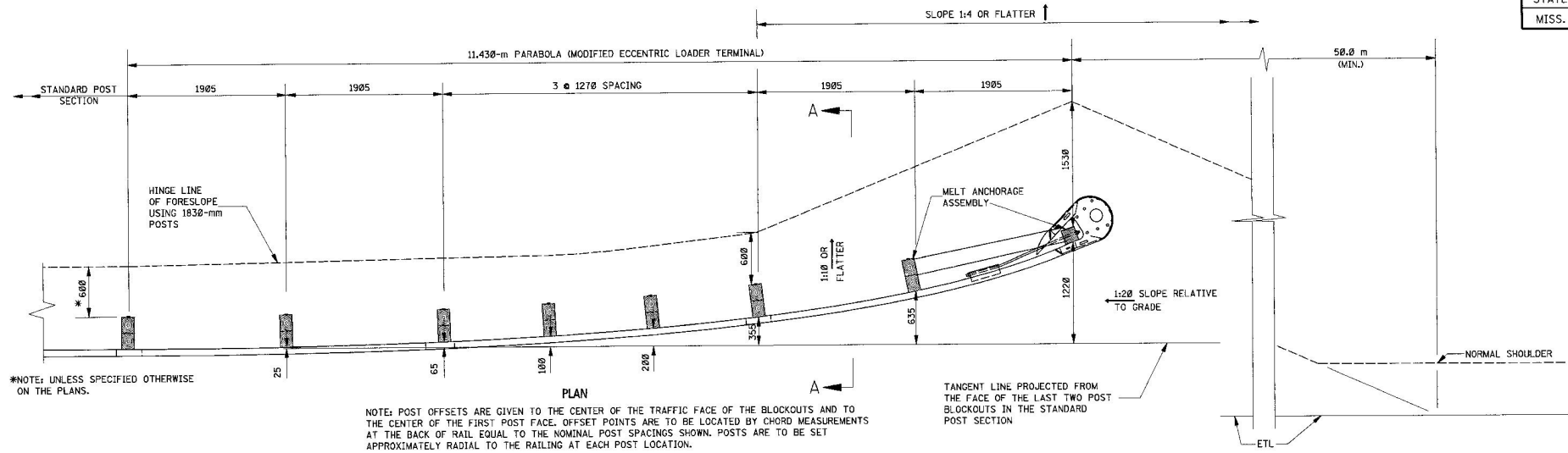
SECTION A-A
BREAKAWAY LINE POST AND BLOCKOUT



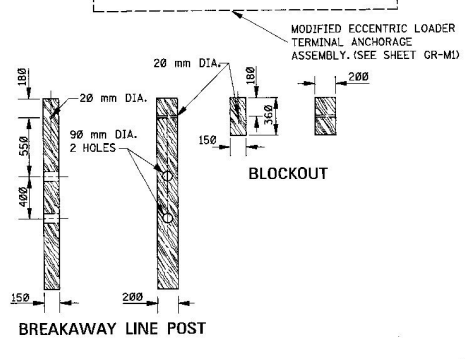
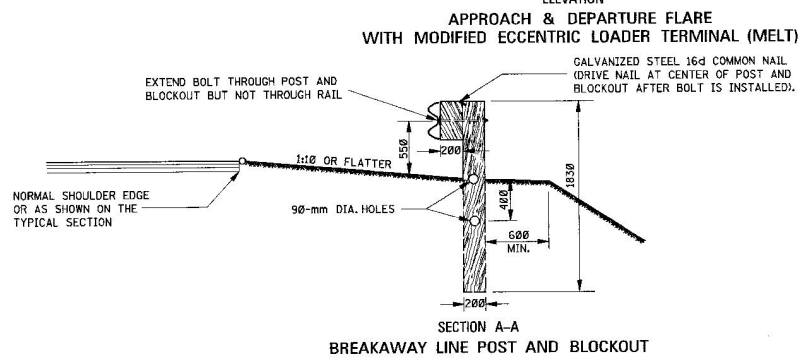
BLOCKOUT
BREAKAWAY LINE POST

MISSISSIPPI DEPARTMENT OF TRANSPORTATION ROADWAY DESIGN DIVISION STANDARD PLAN		 WORKING NUMBER GR-M3 SHEET NUMBER
DATE	ISSUE DATE:	

**GUARDRAIL:
MODIFIED ECCENTRIC
LOADER TERMINAL
("MELT")**



- GENERAL NOTES:
1. GUARDRAIL SHALL MEET THE REQUIREMENTS OF AASHTO M 180, CLASS A, TYPE 1 UNLESS OTHERWISE DESIGNATED.
 2. GUARDRAIL SECTIONS SHALL BE LAPPED IN THE DIRECTION OF TRAFFIC FLOW FOR THE LANE NEAREST THE GUARDRAIL.
 3. ALL ANGLES, CHANNELS AND PLATES SHALL CONFORM TO THE REQUIREMENTS OF ASTM A 500 OR ASTM A 513 GRADE 1008. DIAPHRAGM PLATE SHALL CONFORM TO ASTM A 36M OR AASHTO M 180. WELDING SHALL MEET THE CURRENT REQUIREMENTS OF THE AMERICAN WELDING SOCIETY STRUCTURAL WELDING CODE ANSI/AASHTO/AWS DIS. ALL STRUCTURAL STEEL SHALL BE GALVANIZED IN ACCORDANCE WITH ASTM A 123. NO PUNCHING, DRILLING OR CUTTING WILL BE PERMITTED AFTER GALVANIZING EXCEPT FOR HOLES TO MOUNT GUARDRAIL DELINEATORS.
 4. ALL WOOD POSTS AND BLOCKOUTS SHALL BE TREATED TIMBER IN ACCORDANCE WITH MISSISSIPPI DEPARTMENT OF TRANSPORTATION STANDARD SPECIFICATIONS.
 5. FOR HARDWARE COMPONENT AND ASSEMBLY DETAILS SPECIFIC TO THE MELT TERMINAL SECTION, SEE SHEETS GR-M1 AND GR-M2.
 6. FOR OTHER DETAILS OF POSTS, POST ACCESSORIES, FASTENERS & RAIL ELEMENTS, SEE AASHTO-AGC-ARTBA JOINT TASK FORCE NO. 13, TITLED "A GUIDE TO STANDARDIZED HIGHWAY BARRIER HARDWARE," LATEST EDITION.



ALL DIMENSIONS ARE IN MILLIMETERS (mm) EXCEPT WHERE NOTED.


MISSISSIPPI DEPARTMENT OF TRANSPORTATION
ROADWAY DESIGN DIVISION
STANDARD PLAN

**GUARDRAIL:
MODIFIED ECCENTRIC
LOADER TERMINAL
("MELT")**

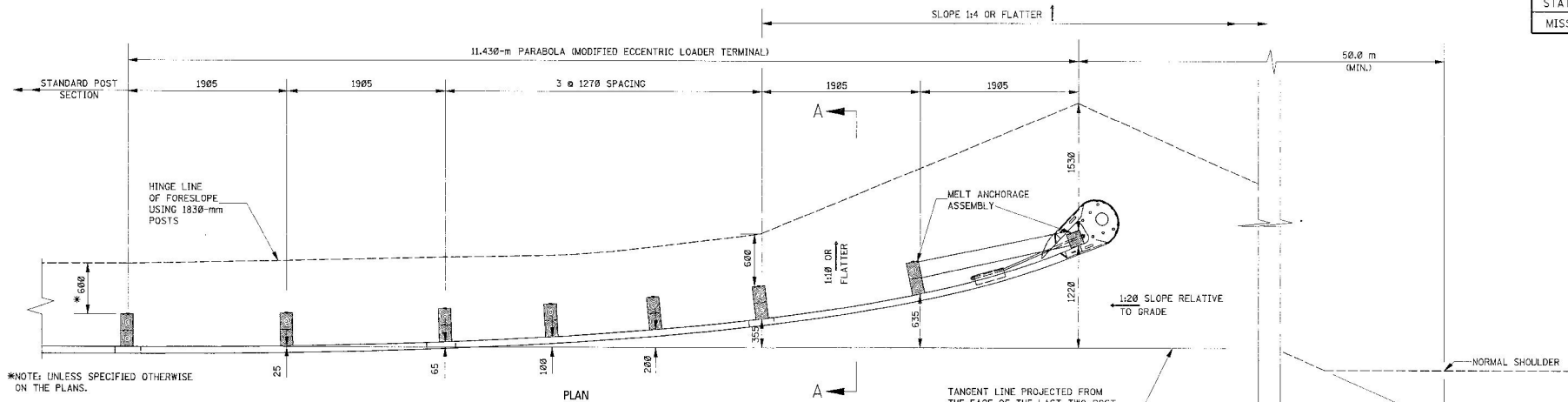
WORKING NUMBER: GR-M3
SHEET NUMBER: _____

DATE: _____ BY: _____
DATE: _____ BY: _____

ISSUE DATE: _____



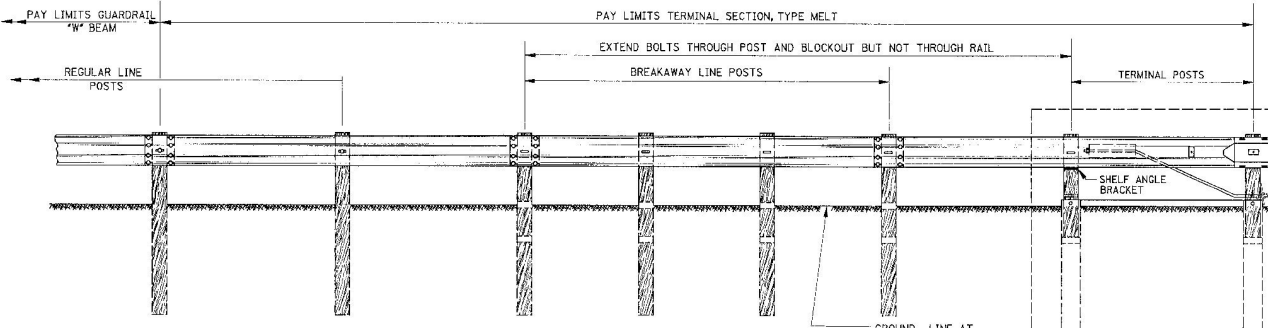
STATE	PROJECT NO.
MISS.	



*NOTE: UNLESS SPECIFIED OTHERWISE ON THE PLANS.

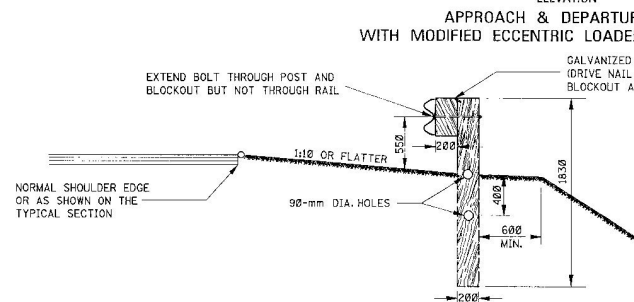
NOTE: POST OFFSETS ARE GIVEN TO THE CENTER OF THE TRAFFIC FACE OF THE BLOCKOUTS AND TO THE CENTER OF THE RAIL FIRST POST FACE. OFFSET POINTS ARE TO BE LOCATED BY CHORD MEASUREMENTS AT THE BACK OF RAIL EQUAL TO THE NOMINAL POST SPACINGS SHOWN. POSTS ARE TO BE SET APPROXIMATELY RADIAL TO THE RAILING AT EACH POST LOCATION.

TANGENT LINE PROJECTED FROM THE FACE OF THE LAST TWO POST BLOCKOUTS IN THE STANDARD POST SECTION

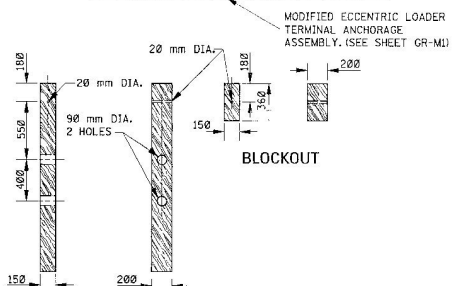


GENERAL NOTES:

1. GUARDRAIL SHALL MEET THE REQUIREMENTS OF AASHTO M 180, CLASS A, TYPE 1 UNLESS OTHERWISE DESIGNATED.
2. GUARDRAIL SECTIONS SHALL BE LAPPED IN THE DIRECTION OF TRAFFIC FLOW FOR THE LANE NEAREST THE GUARDRAIL.
3. ALL ANGLES, CHANNELS AND PLATES SHALL CONFORM TO THE REQUIREMENTS OF ASTM A 500 OR ASTM A 513 GRADE 1008. DIAPHRAGM PLATE SHALL CONFORM TO ASTM A 36M OR AASHTO M 180. WELDING SHALL MEET THE CURRENT REQUIREMENTS OF THE AMERICAN WELDING SOCIETY STRUCTURAL WELDING CODE ANSI/AASHTO/AWS D15. ALL STRUCTURAL STEEL SHALL BE GALVANIZED IN ACCORDANCE WITH ASTM A 123. NO PUNCHING, DRILLING OR CUTTING WILL BE PERMITTED AFTER GALVANIZING EXCEPT FOR HOLES TO MOUNT GUARDRAIL DELINEATORS.
4. ALL WOOD POSTS AND BLOCKOUTS SHALL BE TREATED TIMBER IN ACCORDANCE WITH MISSISSIPPI DEPARTMENT OF TRANSPORTATION STANDARD SPECIFICATIONS.
5. FOR HARDWARE COMPONENT AND ASSEMBLY DETAILS SPECIFIC TO THE MELT TERMINAL SECTION, SEE SHEETS GR-M1 AND GR-M2.
6. FOR OTHER DETAILS OF POSTS, POST ACCESSORIES, FASTENERS & RAIL ELEMENTS, SEE AASHTO-ACC-ARTBA JOINT TASK FORCE NO. 13, TITLED "A GUIDE TO STANDARDIZED HIGHWAY BARRIER HARDWARE," LATEST EDITION.



SECTION A-A
BREAKAWAY LINE POST AND BLOCKOUT



BREAKAWAY LINE POST

ALL DIMENSIONS ARE IN MILLIMETERS (mm) EXCEPT WHERE NOTED.

DATE	BY	MISSISSIPPI DEPARTMENT OF TRANSPORTATION ROADWAY DESIGN DIVISION STANDARD PLAN
	REVISION	
	DATE	
	ISSUE DATE:	

**GUARDRAIL:
MODIFIED ECCENTRIC
LOADER TERMINAL
("MELT")**



WORKING NUMBER
GR-M3
SHEET NUMBER