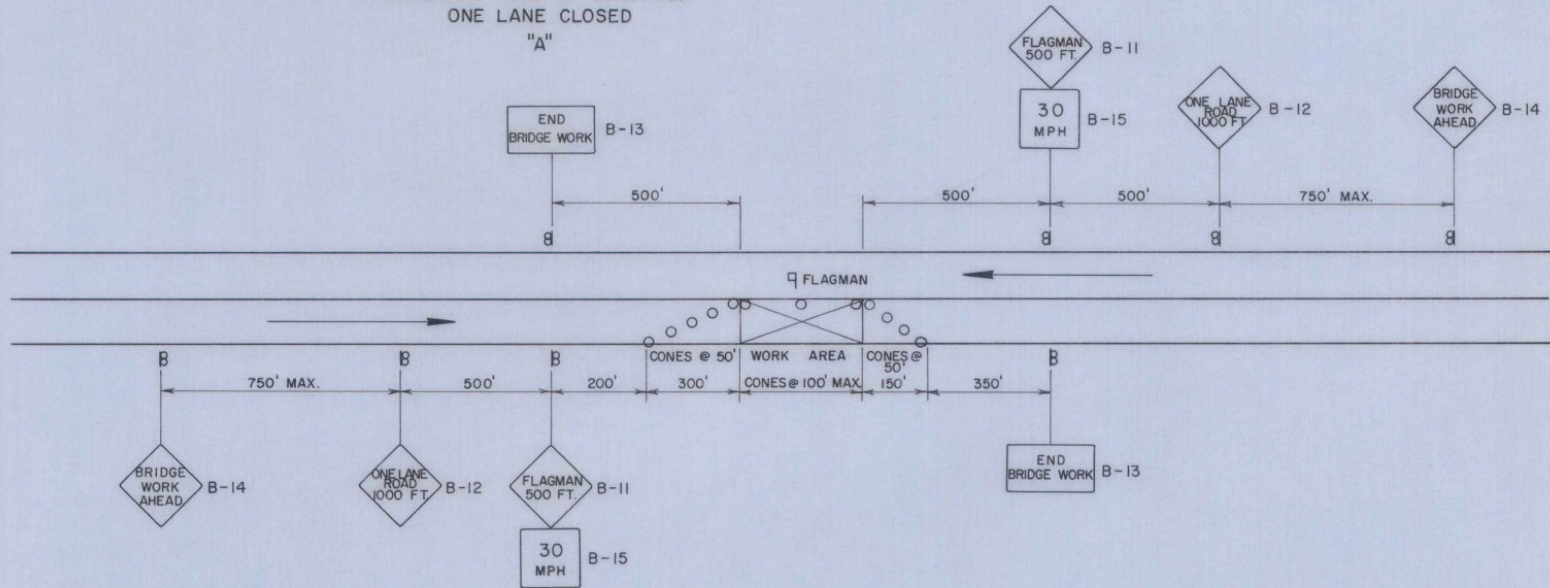
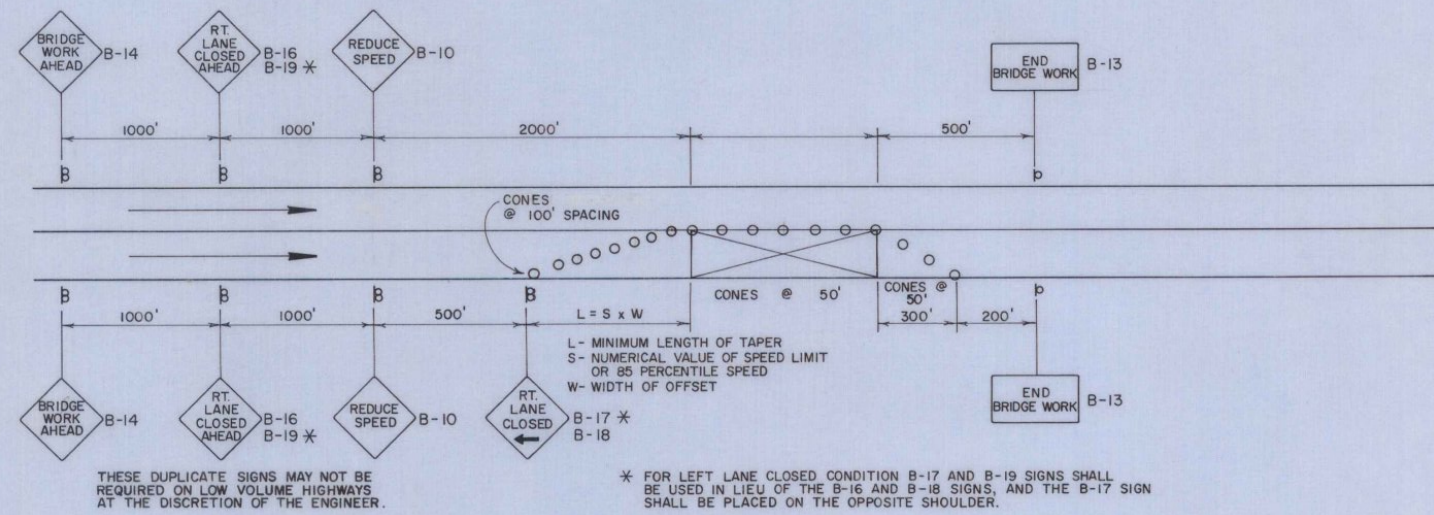


OPPOSING TRAFFIC CONDITION  
ONE LANE CLOSED  
"A"



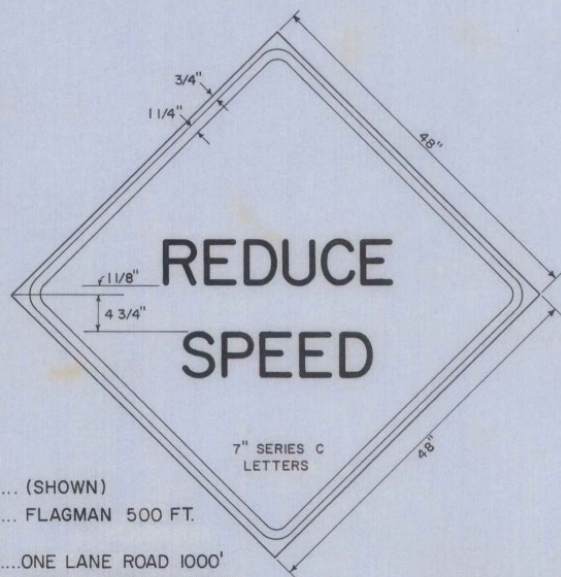
DIVIDED HIGHWAY CONDITION  
ONE LANE CLOSED  
"B"



THESE DUPLICATE SIGNS MAY NOT BE REQUIRED ON LOW VOLUME HIGHWAYS AT THE DISCRETION OF THE ENGINEER.

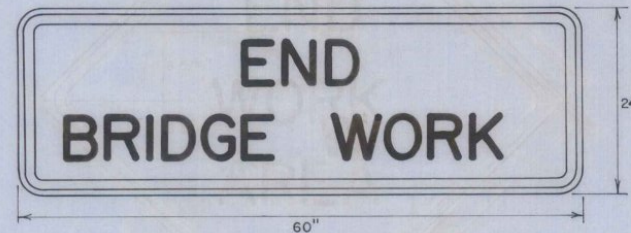
\* FOR LEFT LANE CLOSED CONDITION B-17 AND B-19 SIGNS SHALL BE USED IN LIEU OF THE B-16 AND B-18 SIGNS, AND THE B-17 SIGN SHALL BE PLACED ON THE OPPOSITE SHOULDER.

SIGNS B-10, B-11, B-12, B-14



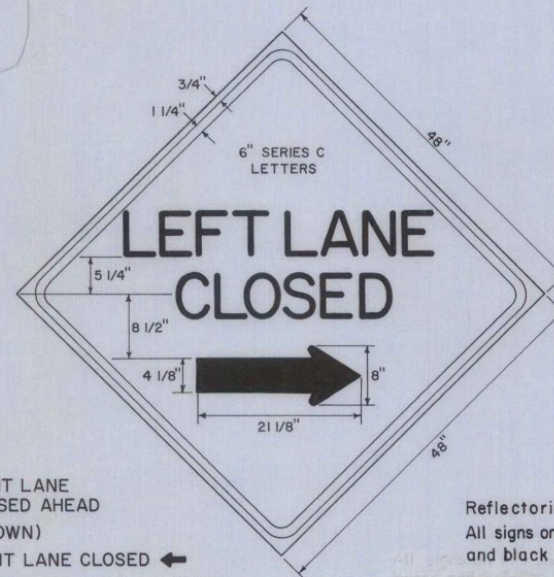
B-10... (SHOWN)  
(W20-7) B-11... FLAGMAN 500 FT.  
(W20-4) B-12... ONE LANE ROAD 1000'  
(W20-1) B-14... BRIDGE WORK AHEAD (MOD)

SIGN B-13  
(G 20-2 MOD)

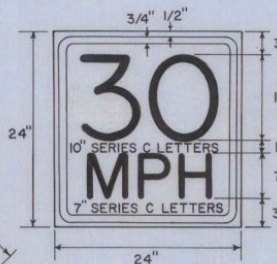


(W20-5) B-16... RIGHT LANE CLOSED AHEAD  
(W20-5) B-17... (SHOWN)  
(W20-5) B-18... RIGHT LANE CLOSED  
(W20-5) B-19... LEFT LANE CLOSED AHEAD

SIGNS B-16, B-17, B-18, B-19



SIGN B-15  
(W 13-1)



ReflectORIZATION  
All signs on this sheet shall have an orange background and black legend and borders.  
These signs shall have encapsulated lens reflective sheeting material.

NOTES:

1. Signing to remain the same for "all lanes open condition," except signs B-11, B-15, B-16, B-17, B-18, & B-19 are to be covered or removed.
2. All signs shall be covered or removed at the end of the working day unless required for the protection and safety of the traveling public.
3. If vertical clearance has been reduced below 14 ft. and lane is open to traffic, a vertical clearance sign is required with clearance shown. If clearance is reduced below 12 ft. the lane must be closed. The signs shall be located next to the restriction. Existing clearance warning signs shall be covered when not applicable.
4. When any personnel or equipment is temporarily working, or physically placed within the work zone shoulder limits, a flagman shall be placed on duty to direct traffic for condition "A" only. Flagmen use shall be as directed by the Engineer.
5. Signs on all intersecting public highways shall be as shown on the plans or as directed by the Engineer.
6. The design of the signs shall conform with the details shown on this sheet and with the standards in the Manual on Uniform Traffic Control Devices prepared by the National Joint Committee on Uniform Traffic Control Devices.
7. Installation. Signs and barricades shall be in place prior to the start of the maintenance operation to which they apply, and shall be removed promptly when the need no longer exists. Each sign shall be erected in a neat and workmanlike manner on wood or metal posts set securely in the ground, or on portable supports for temporary use, or on barricades when appropriate. As a general rule, roadside signs shall be 5 feet above road level with the nearest edge at least 6 feet outside the shoulder point. The installation of all signs and barricades shall be subject to the approval of the Eng'r.
8. The cost of furnishing, erecting, maintaining, and removing all signs shall be borne by the Contractor without additional compensation.

REVISIONS AND CORRECTIONS  
FEB. 29, 1972: REVISED PER DIRECTION OF FEDERAL HIGHWAY ADMINISTRATION  
DEC. 19, 1972: REVISED PER DIRECTION OF FEDERAL HIGHWAY ADMINISTRATION  
MAY 14, 1974: REFLECTIVE MATERIAL CHANGE.  
DEC. 12, 1975: REVISED TO CONFORM WITH STANDARD E-2.  
JUNE 8, 1977: REFLECTIVE MATERIAL NOTE CHANGED. SIGNS REFERENCED TO NUMBERS IN M.U.T.C.D.

APPROVED

Dec. 29, 1971  
R. H. Arnold  
CHIEF ENGINEER  
E. H. Stibany  
ASST. CHIEF ENGINEER  
L. M. Lane  
HIGHWAY ENGINEER

TRAFFIC SIGNS

BRIDGE MAINTENANCE APPROACH SIGNS

VERMONT  
DEPARTMENT  
OF HIGHWAYS  
STANDARD

E-39