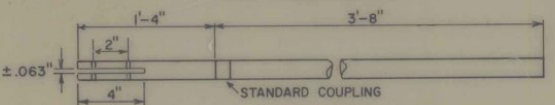


CONSTRUCTION ORANGE REFLECTORIZED DIAMOND WITH BLACK TEXT AND BORDER SERIES B LETTERS

RED REFLECTORIZED OCTAGON WITH 6" SERIES C WHITE TEXT
STANDARD COUPLING

SIGN PADDLE DETAIL



STAFF DETAIL

MATERIALS

THE SIGN MATERIALS SHALL BE 0.063 ALUMINUM WITH COLORS AS INDICATED ON DETAILS. THE STAFF SHALL BE 1" RIDGED ALUMINUM CONDUIT OR TUBING WITH A WALL THICKNESS OF 1/8 INCH.

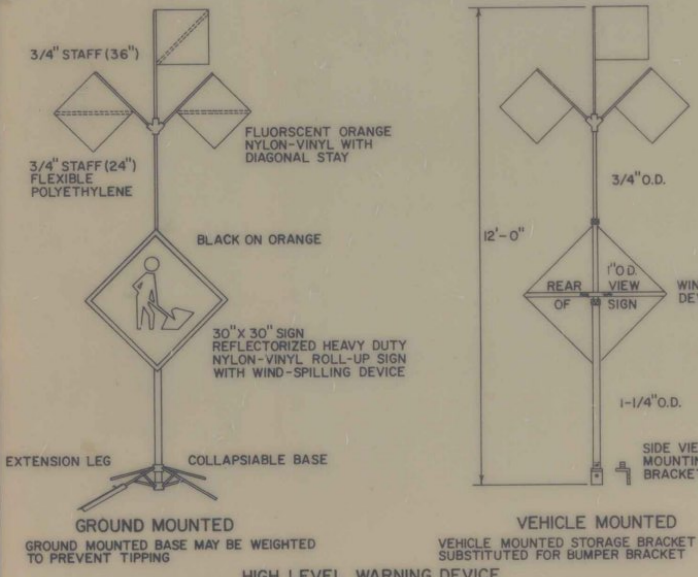
COLORS

THE COLORS SHALL CONFORM WITH THE STANDARD COLORS ADOPTED BY THE AMERICAN ASSOCIATION OF STATE HIGHWAY AND TRANSPORTATION OFFICIALS AND APPROVED BY THE U.S. DEPARTMENT OF TRANSPORTATION, FEDERAL HIGHWAY ADMINISTRATION.

MOUNTING

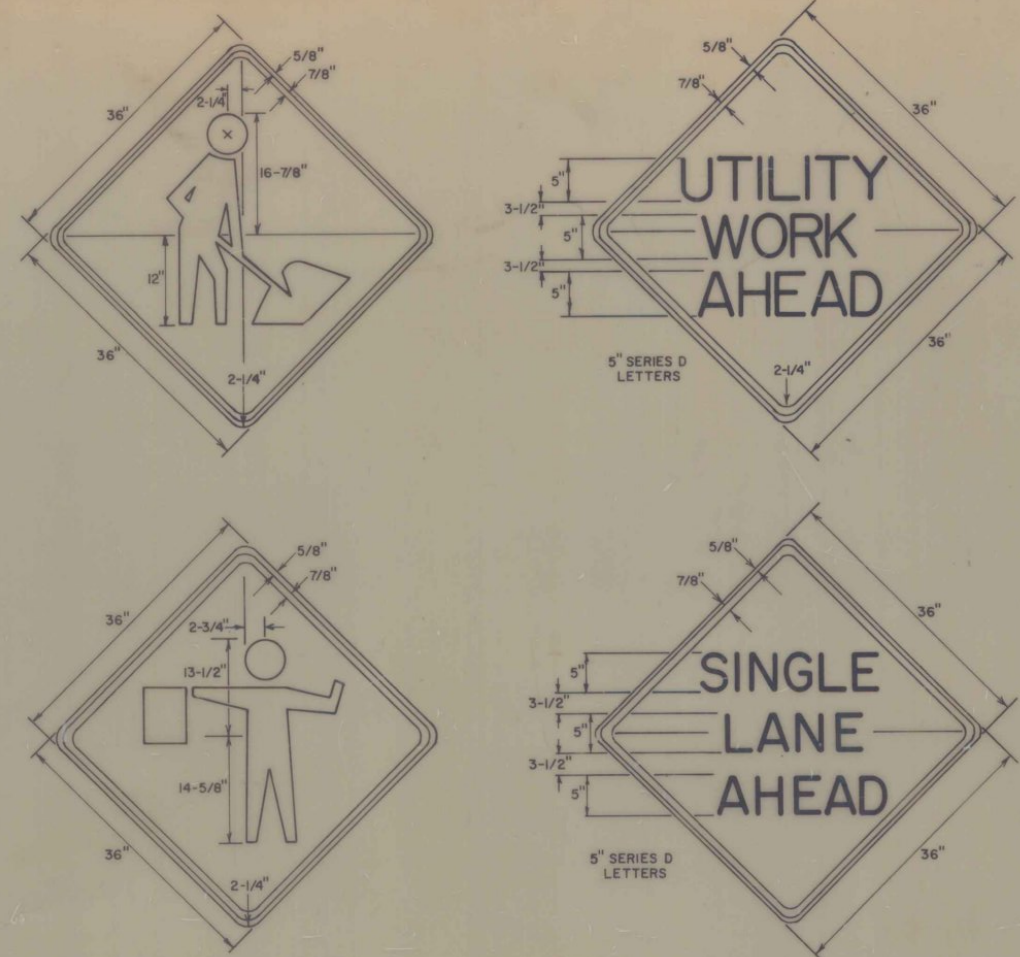
THE STAFF SHALL BE MOUNTED WITH EITHER 2-1/4" ALUMINUM BOLTS OR 2-1/4" ALUMINUM RIVETS.

SIGN PADDLE FOR FLAGPERSON



ALL TUBES SHALL BE ALUMINUM ALLOY 6063-T832 OR 6061-T6 WITH A NOMINAL WALL THICKNESS OF 0.063"
LOCKING FINGERS COMPRESSED BY TIGHTENING KNURLED NUTS HOLD THE TUBES IN EXTENDED POSITION.
MIDDLE TUBE TO INCORPORATE AN ANTI-ROTATING DEVICE WHICH ENGAGES THE BOTTOM OF THE LOCKING FINGER MECHANISM.

HIGH LEVEL WARNING DEVICES ARE MOST COMMONLY USED IN URBAN, HIGH DENSITY SITUATIONS TO WARN MOTORISTS OF OPERATIONS SUCH AS PAVEMENT PATCHING, MANHOLE WORK, SURVEYING, UTILITY WORK, ETC. OR IN RURAL AREAS REQUIRING ADDITIONAL VISIBILITY.



INSTALLATION

THE SIGNS SHALL BE IN PLACE AT THE TIME THE PROJECT COMMENCES. EACH SIGN SHALL BE ERECTED IN A NEAT AND WORKMANLIKE MANNER ON WOOD OR METAL POSTS SET SECURELY IN THE GROUND, UNLESS OTHERWISE NOTED ON THIS SHEET. THE BOTTOM OF A SIGN, UNLESS OTHERWISE NOTED SHALL BE AT LEAST 5 FEET ABOVE ROAD LEVEL, AND THE NEAREST EDGE OF A SIGN SHALL BE AT LEAST 6 FEET OUTSIDE THE SHOULDER POINT OR 2 FEET OUTSIDE GUARD RAIL, CURBING OR SIDEWALK. SIGNS MOUNTED ON BARRICADES OR TEMPORARY SUPPORTS SHALL BE POSITIONED SUCH THAT THE BOTTOM OF THE SIGN IS NOT LESS THAN ONE FOOT ABOVE THE PAVEMENT ELEVATION.

REFLECTORIZATION

ALL REFLECTORIZED MATERIAL SHALL CONSIST OF ENCAPSULATED LENS REFLECTIVE SHEETING. THE TEXT AND BORDERS MAY BE SCREENED, LETTERING FILM, OR HAND PAINTED. CONES USED FOR TRAFFIC CONTROL AT NIGHT SHALL HAVE A MINIMUM 6" WIDE REFLECTORIZED MATERIAL.

COLORS

THE WARNING SIGNS SHOWN ON THIS SHEET SHALL HAVE BLACK TEXT, BORDER, AND SYMBOLS ON A REFLECTORIZED ORANGE BACKGROUND. THE ORANGE SHALL CONFORM WITH THE STANDARD COLORS ADOPTED BY THE AMERICAN ASSOCIATION OF STATE HIGHWAY AND TRANSPORTATION OFFICIALS AND APPROVED BY THE U.S. DEPARTMENT OF TRANSPORTATION, FEDERAL HIGHWAY ADMINISTRATION.

TEXT DESIGN

LETTERS, DIGITS, SPACING, AND TEXT DIMENSIONS SHALL CONFORM WITH THE STANDARD ALPHABETS AND DESIGN PRESCRIBED IN THE MANUAL ON UNIFORM TRAFFIC CONTROL DEVICES.

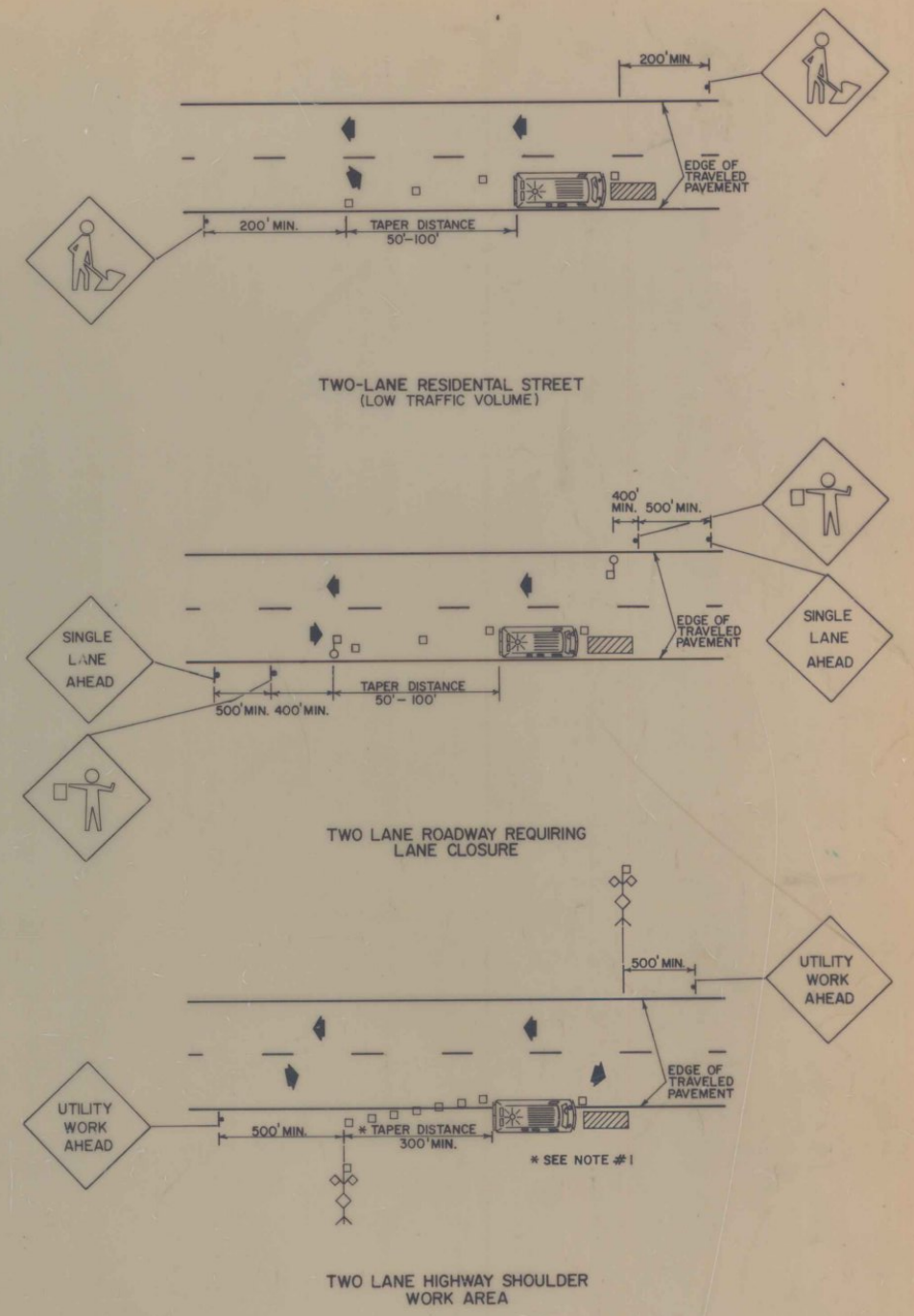
SPECIFICATIONS

WARNING SIGNS SHALL MEET THE STANDARD STATE SPECIFICATIONS FOR TRAFFIC SIGNS.

SIGN BASE MATERIAL

THE SIGN BASE MATERIAL USED FOR THE WARNING SIGNS ON THIS SHEET MAY BE OF ANY OF THE FOLLOWING, WITH MINIMUM THICKNESS AS NOTED.

FLAT SHEET ALUMINUM	0.125 INCHES
HIGH DENSITY OVERLAPPED PLYWOOD	3/4 INCHES
GALVANIZED SHEET STEEL	1/2 GAGE



GENERAL NOTES

1. THE MINIMUM TAPER DISTANCE IS BASED ON AND ASSUMED 6' FOOT SHOULDER WIDER SHOULDERS REQUIRE A LONGER TAPER BASED ON THE FORMULA TAPER = SHOULDER WIDTH X SPEED LIMIT.
2. CONES SHALL BE ORANGE IN COLOR AND KEPT CLEAN AND BRIGHT. ALTHOUGH 18" HIGH CONES ARE ACCEPTABLE LARGER CONES SHOULD BE USED WHENEVER MORE CONSPICUOUS GUIDANCE IS NEEDED.

LEGEND

- HIGH LEVEL WARNING DEVICE
- WORK AREA
- CHANNELIZING DEVICE (50' MAX. SPACING)
- ★ FLASHING VEHICLE LIGHT
- FLAGGER

REVISIONS AND CORRECTIONS
FEB. 3, 1986 - UPDATED TO 1986 SPECIFICATIONS

APPROVED: JUNE 2, 1982
DATE
DIRECTOR OF ENGINEERING AND CONSTRUCTION
CHIEF OF DESIGN
SURVEY AND PLANS ENGINEER

UTILITY WORK ZONE



STANDARD
E-9