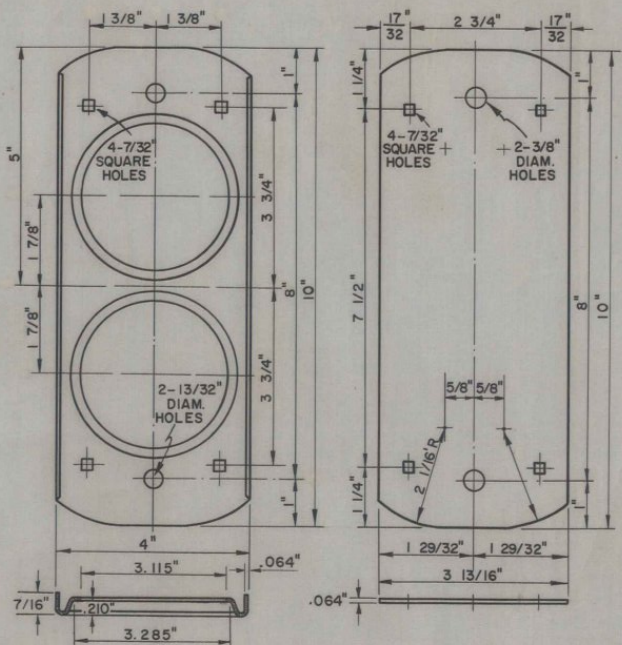


TYPICAL PLACEMENT ON INTERSTATE ROADWAYS

TYPE "A" DELINEATORS, WITH A SINGLE COLORLESS REFLECTOR, SHALL BE ERRECTED 200 FEET APART CONTINUOUSLY ALONG THE RIGHT SIDE OF INTERSTATE ROADWAYS, EXCEPT ON DECELERATION AND ACCELERATION LANES. THEY SHALL BE SET TWO FEET OUTSIDE THE POINT OF SHOULDER OR TWO FEET OUTSIDE THE FACE OF CURB AND GUARD RAIL; THE TOPS OF THE POSTS NOT LESS THAN FOUR FEET ABOVE THE GRADE OF PAVEMENT EDGE.



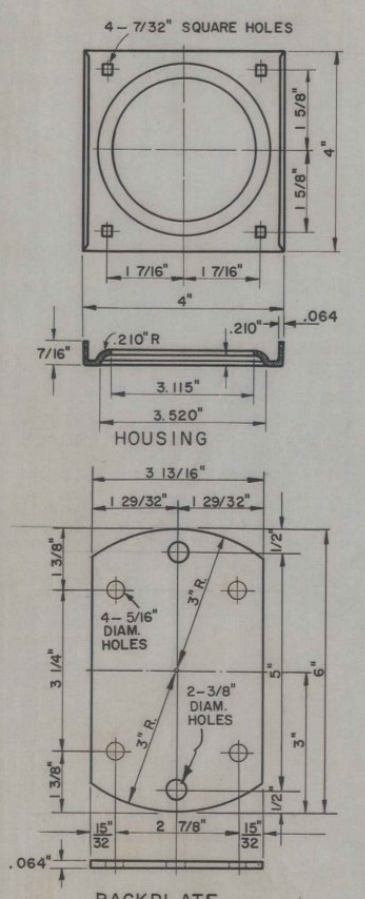
HOUSING BACKPLATE
TYPE "B" DELINEATOR ASSEMBLY
TO BE USED WITH TWO YELLOW REFLECTORS

GENERAL NOTES

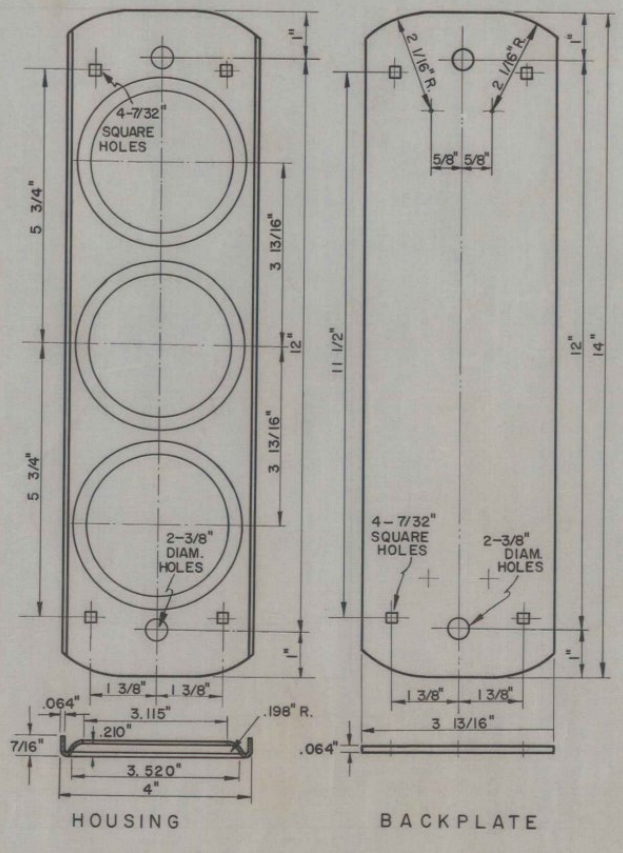
REFLECTORS, HOUSINGS, BACKPLATES, POSTS, AND ASSEMBLY AND MOUNTING HARDWARE SHALL CONFORM WITH THE REQUIREMENTS OF ITEM 580, "DELINEATORS".
HOUSINGS AND BACKPLATES, HOLDING THE REFLECTORS, SHALL BE FASTENED TOGETHER WITH FOUR 10-24 X 3/8" LONG CARRIAGE BOLTS WITH VANDAL-RESISTANT NUTS, MEETING THE APPROVAL OF THE ENGINEER.
ASSEMBLED DELINEATOR UNITS SHALL BE MOUNTED ON THE POSTS WITH TWO 1/4-20 X 1 1/4" LONG CARRIAGE BOLTS WITH 1/2" DIAMETER VANDAL-RESISTANT NUTS, MEETING THE APPROVAL OF THE ENGINEER.
LOCATION AND PLACEMENT OF DELINEATORS AT INTERCHANGES SHALL BE SHOWN ON THE PLANS OR ORDERED BY THE ENGINEER.

ON DECELERATION LANES, ACCELERATION LANES AND DIVISIONED ISLANDS AT WEIGHING STATIONS, TYPE "A" DELINEATORS SHALL BE ERRECTED 200 FEET APART AS FOR INTERSTATE ROADWAY. (TYPE B AND TYPE C DELINEATORS SHALL NOT BE USED.)

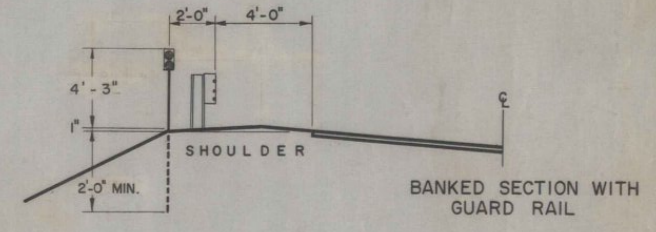
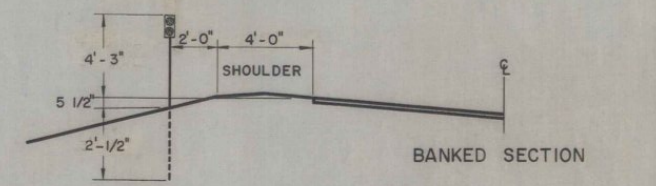
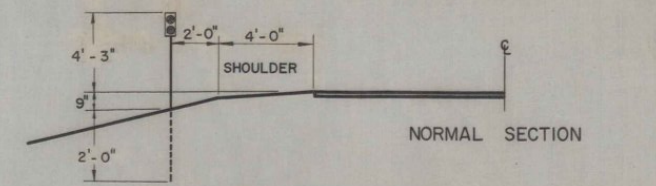
AT LOCATIONS OUTSIDE CURBING AND ON THE OUTSIDE OF A BANKED CURB CURB DELINEATOR POSTS MAY BE SHORTENED IN THE FIELD TO A LENGTH THAT WILL PROVIDE FOR A MINIMUM DEPTH IN THE GROUND OF TWO FEET



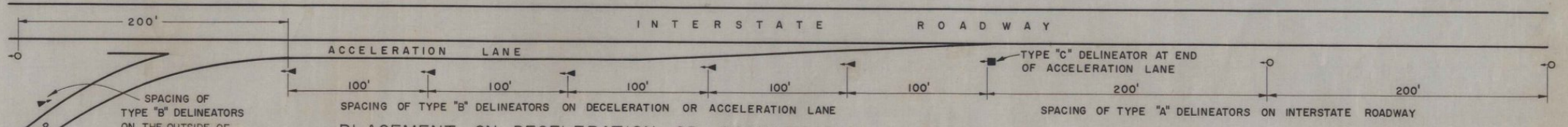
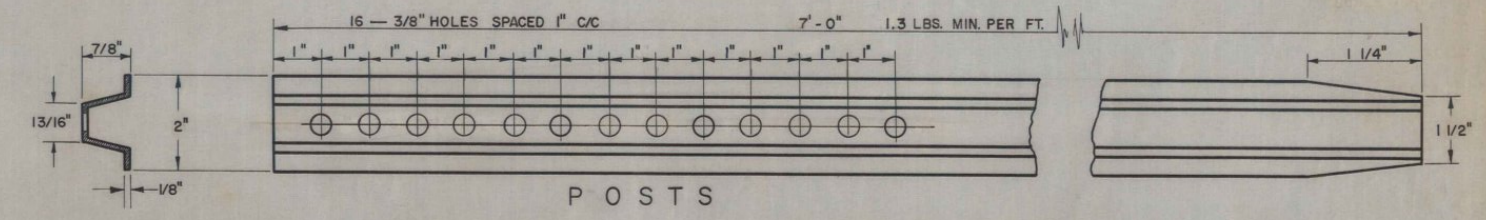
HOUSING BACKPLATE
TYPE "A" DELINEATOR ASSEMBLY
TO BE USED WITH SINGLE COLORLESS REFLECTOR



HOUSING BACKPLATE
TYPE "C" DELINEATOR ASSEMBLY
TO BE USED WITH THREE YELLOW REFLECTORS



PLACEMENT ON RAMPS AND DECELERATION OR ACCELERATION LANES



PLACEMENT ON DECELERATION OR ACCELERATION LANES

TYPE "B" DELINEATORS, WITH TWO YELLOW REFLECTORS, SHALL BE ERRECTED 100 FEET APART CONTINUOUSLY ALONG THE RIGHT SIDE OF DECELERATION AND ACCELERATION LANES, OR AS SHOWN ON THE PLANS. THEY SHALL BE SET TWO FEET OUTSIDE THE POINT OF SHOULDER, OR TWO FEET OUTSIDE THE FACE OF CURB AND GUARD RAIL; THE TOPS OF THE POSTS AT LEAST FOUR FEET AND THREE INCHES ABOVE THE GRADE OF THE PAVEMENT EDGE. (SEE GENERAL NOTE ABOVE FOR REST AREAS AND WEIGHING STATIONS.)

TYPE "C" DELINEATORS, WITH THREE YELLOW REFLECTORS, SHALL BE ERRECTED AT THE ENDS OF ACCELERATION LANES AS SHOWN ON THE PLANS. THEY SHALL BE SET TWO FEET OUTSIDE THE POINT OF SHOULDER WITH THE TOP OF THE POST AT LEAST FOUR FEET AND THREE INCHES ABOVE THE GRADE OF THE PAVEMENT EDGE.

REVISIONS AND CORRECTIONS
JULY 16, 1959 - LATERAL PLACEMENT MOVED TO EDGE OF SHOULDER FROM TWO FEET OUT.
MARCH 13, 1961 1. LENGTH OF POSTS REDUCED FROM 8' TO 7'
2. TYPE B AND C DELINEATORS REQUIRED AT REST AREAS
3. REVISION OF JULY 16, 1959 IS HEREBY DELETED EXCEPT IN AREAS WHERE GUARD RAIL OR CURB IS ENCOUNTERED.
4. MINIMUM POST WEIGHT OF 1.12 LBS. PER FOOT ADDED
WEIGHT AND HOLES ON POSTS CHANGED JULY 26, 1962

APPROVED: DATE June 1, 1959
H. E. Slaughter
CHIEF ENGINEER
G. M. Law
HIGHWAY ENGINEER
E. W. Stikney
CONSTRUCTION ENGINEER
DRAWN A.W.C.
TRACED T.A.J.A.
TRAFFIC ENGINEER

DELINEATORS ITEM 580
DESIGN AND INSTALLATION DETAILS
FOR INTERSTATE PROJECTS
INTERSTATE PROJECTS

VERMONT DEPARTMENT OF HIGHWAYS STANDARD
Ward
E-8