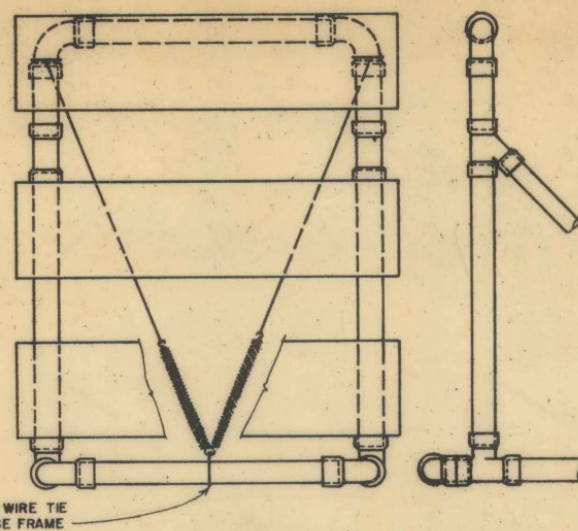
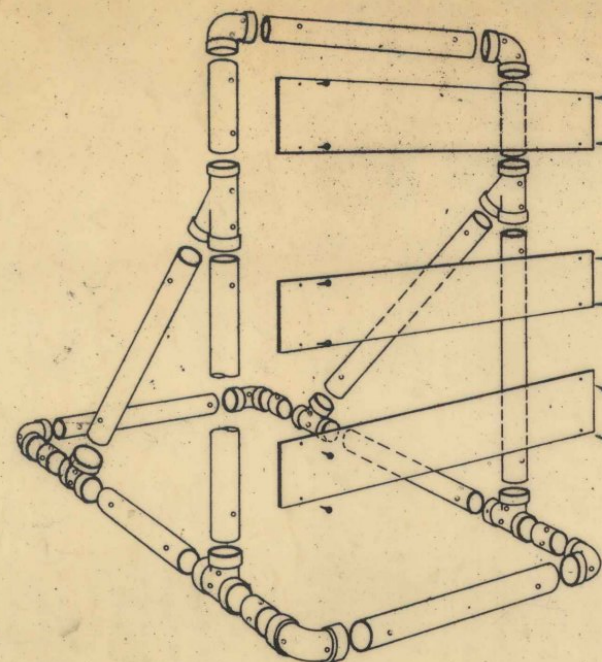


SIDE VIEW



FRONT VIEW



BARRICADE ASSEMBLY

MATERIALS LIST FOR ONE BARRICADE

3" Diameter Pipe	30 LF
3" 1/4 Bend Elbow	6 EA
3" Tees	2 EA
3" Wyes	4 EA
8" x 48" x .025 Barricade Panels	3 EA
5/8" x 11" No. 8 Spring	2 EA
1" No. 14 Pan Head Metal Screws	12 EA
No. 14 Black Annealed Tie Wire	15 LF

MATERIALS

The pipe, wyes, tees and elbows used to construct Type III Barricades shall conform to the requirements of ASTM designation D 2241 for P.V.C. 1120 or 1220 SDR-21, pressure rating 200 p.s.i. The Wyes, tees and elbows shall conform to the requirements of ASTM Designation D 2466, Type II, Grade 1. All joints shall be slip-fit and shall not be threaded or cemented. The 9" x 48" barricade rails shall be fabricated from 0.025" anodized aluminum and shall have reflectorized alternating, orange and white stripes (sloping downward at an angle of 45 degrees in the direction traffic is to pass).

COLORS

The barricades shown on the sheet shall have reflectorized orange and white stripes. The orange shall conform with the standard color adopted by the American Association of State Highway Officials and approved by the U.S. Department of Transportation, Federal Highway Administration.

LOCATION

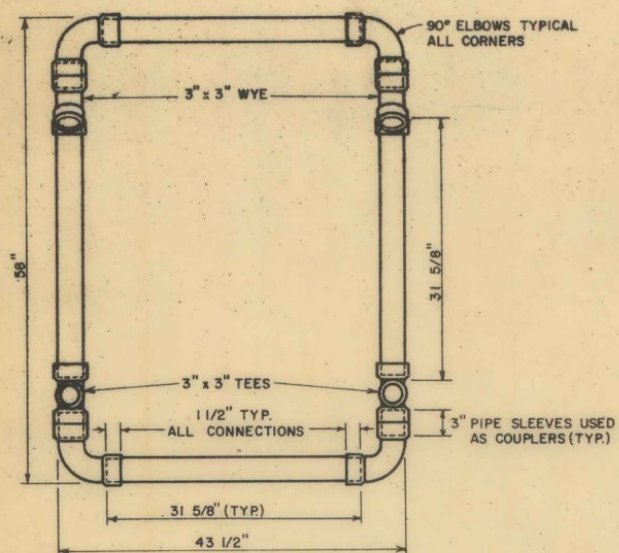
The barricades shown on this sheet will be located by the Engineer in the field or as shown on the plans. The locations of the barricades shall follow the procedures set forth in the Manual on Uniform Traffic Control Devices.

MAINTENANCE

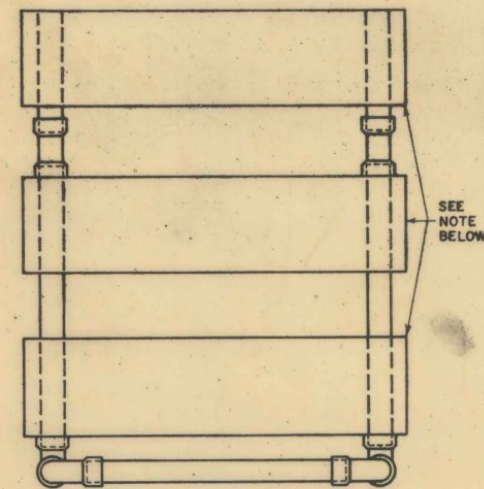
Barricades shall be maintained in clean and legible conditions satisfactory to the Engineer. They shall be completely visible to approaching traffic at all times. Damages, defaced, or dirty barricades shall be repaired, cleared or replaced as ordered by the Engineer.

The 3" P.V.C. Pipe and fittings shall be white in color. If the fittings are not available, other colors may be substituted.

At least two (2) holes shall be drilled (3/16" to 1/4") in each section of pipe and fittings.



TOP VIEW OF BASE



NOTE - 9" x 48" BARRICADE HAZARD PANELS ORANGE AND WHITE RIGHT OR LEFT. (.025 ANODIZED ALUMINUM). PANELS ATTACHED WITH 1" NO. 14 PAN HEAD METAL SCREW.

TRAFFIC SIGNS

TYPE III BARRICADE BREAKAWAY

VERMONT  
DEPARTMENT  
OF HIGHWAYS  
STANDARD

E-7A

REVISIONS & CORRECTIONS  
JAN 11, 1977 - REVISED ACCORDING TO FHWA REQUIREMENTS.  
JUNE 8, 1977 - MATERIALS LIST ADDED.

APPROVED

Dec 30, 1976  
DATE

*E. H. Stickney*  
CHIEF ENGINEER

*R. O. Munn*  
ASST. CHIEF ENGINEER

*Paul E. Jones*  
HIGHWAY ENGINEER