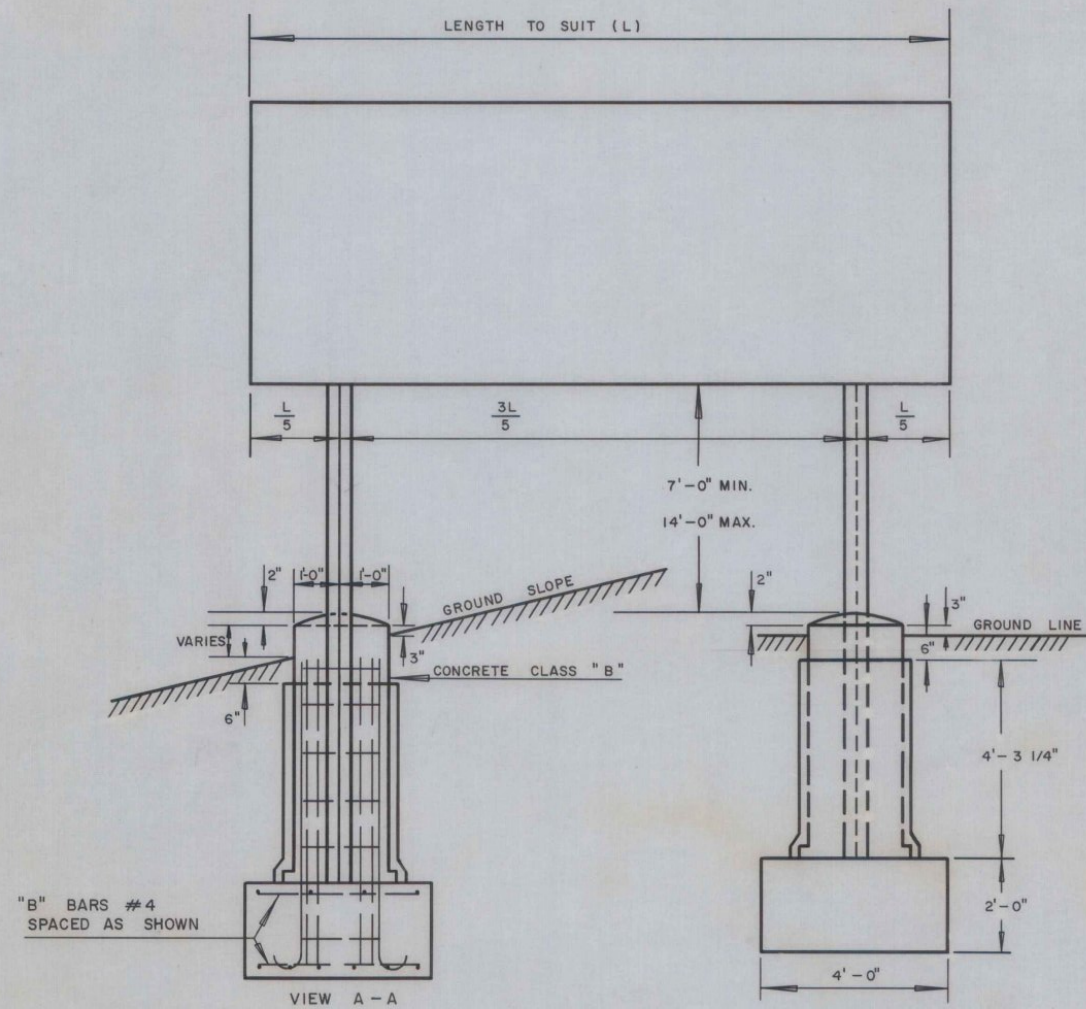
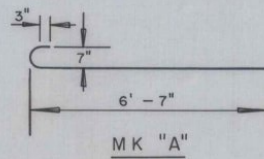


REINFORCING STEEL EACH LEG (EST. 275 LBS.)

MARK	SIZE	TOTAL NO.	TOTAL LENGTH	TYPE	LOCATION
A	7	12	7'-5"	C	STEM
B	4	8	3'-6"	STR.	FOOTING
C	4	4	7'-6"	STR.	FOOTING
D	5	6	7'-6"	STR.	FOOTING
E	2	6	6'-6"	STR.	STEM



POST FOUNDATION SLOPING GROUND

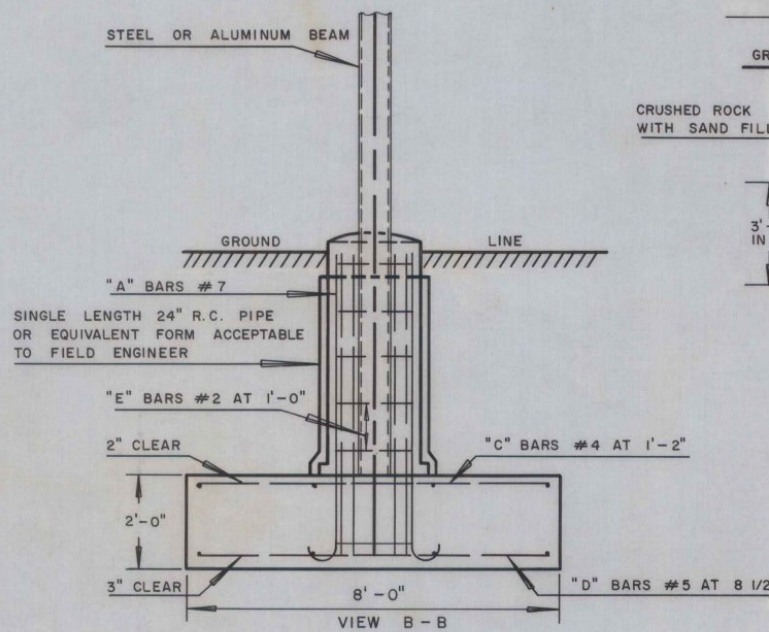
POST FOUNDATION LEVEL GROUND

NOTES:

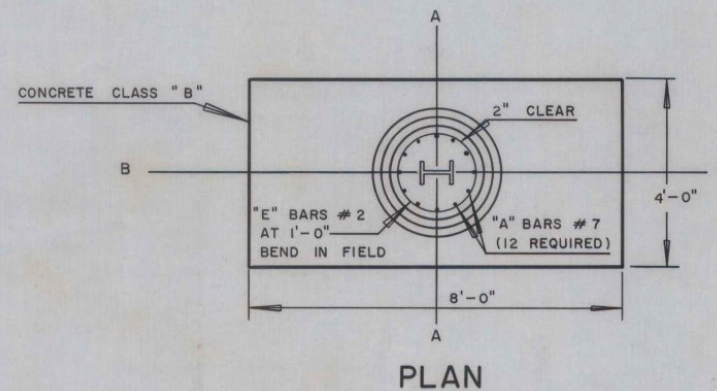
IN ERECTING POST, FIRST EXCAVATE AND POUR FOOTING THEN PLACE POST, PLUMB, ALIGN, AND POUR STEM. THE TIME BETWEEN POURS FOR PROPER CURING OF CONCRETE SHALL BE DETERMINED BY ENGINEER IN FIELD.

ALUMINUM BEAMS IN CONTACT WITH CONCRETE SHALL BE TREATED WITH ZINC CHROMATE PAINT AS SPECIFIED UNDER SECTION D, ITEM 572 BRIDGE RAILING.

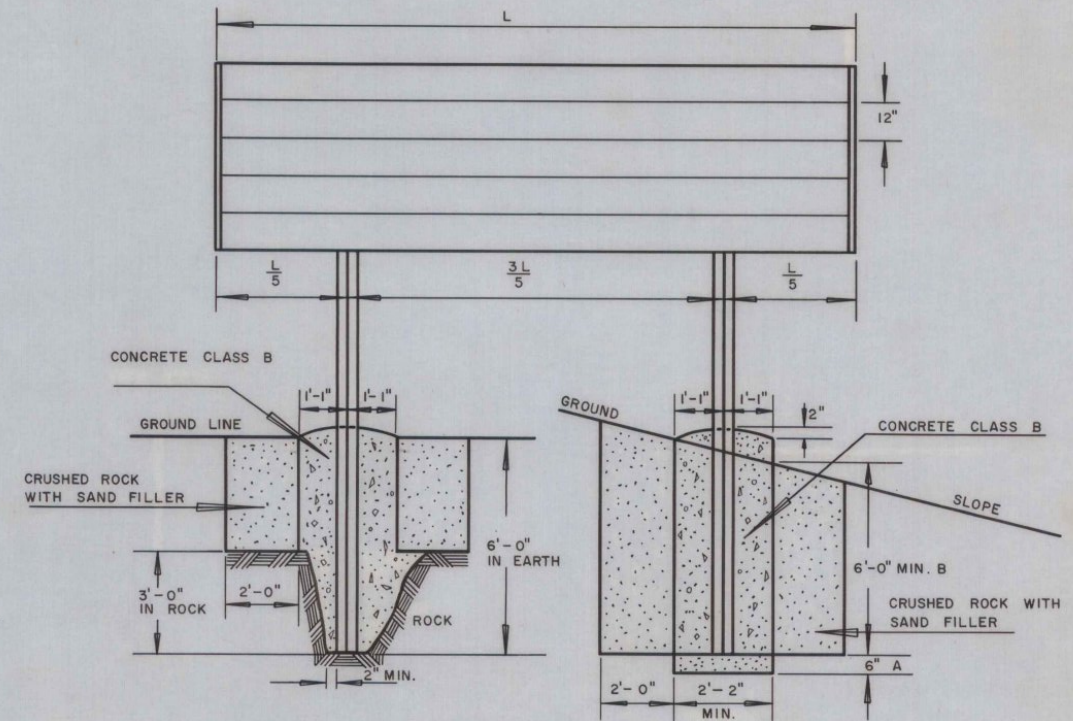
TYPE "B" FOOTINGS



SIDE VIEW



PLAN



NOTE: IN ERECTING POST, FIRST EXCAVATE AND POUR A. THEN PLACE POST, PLUMB AND POUR B. THE TIME BETWEEN POURS FOR PROPER CURING OF CONCRETE SHALL BE DETERMINED BY THE ENGINEER IN FIELD.

TYPE "A" FOOTINGS

GENERAL NOTE

WHEN CONCRETE FOOTINGS ARE NOT REQUIRED, SIGN POSTS SHALL BE SET IN THE GROUND TO THE FOLLOWING MINIMUM DEPTHS UNLESS OTHERWISE SHOWN ON THE PLANS:

POST SIZE	MIN. DEPTH
4 WF 13	6 FT.
6 BJ 8.5	5 1/2 FT.
4 I 7.7	5 FT.
4 U 5.4 X 18'	5 FT.
4 U 5.4 X 16'	4 1/2 FT.
4 U 5.4 X 14'	4 1/2 FT.
4 U 5.4 X 12'	4 FT.
4 U 5.4 X 10'	3 1/2 FT.

REVISIONS AND CORRECTIONS
MAR. 31, 1959 - ADDITION OF GENERAL NOTE.

APPROVED DATE NOV. 24, 1958

H. C. Sargent
CHIEF ENGINEER

A. W. Colman
TRAFFIC ENGINEER

G. M. Lane
HIGHWAY ENGINEER

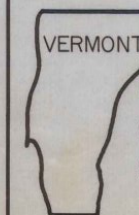
W. H. Bates
CONSTRUCTION ENGINEER

DRAWN: SMITH
TRACED: GUS AJA

INTERSTATE PROJECTS

TRAFFIC SIGNS

SIGN POST FOOTINGS



VERMONT
DEPARTMENT
OF HIGHWAYS
STANDARD

E-5