

STEEL POSTS AND FOOTINGS FOR SIGNS

IF "S" IS EQUAL TO OR LESS THAN	USE POST	USE FOOTING DEPTH "C"	DIAMETER "D"
650	4 WF 13	* 6'-0"	18"
1210	6 WF 15.5	* 6'-0"	18"
1690	8 WF 17	* 6'-0"	18"
2580	10 WF 21	6'-6"	18"
3170	10 WF 25	6'-0"	24"
4090	12 WF 27	6'-9"	24"
4730	12 WF 31	6'-6"	30"
6230	12 WF 40	8'-3"	30"
		7'-3"	30"
		6'-6"	36"

\* MINIMUM FOR FROST

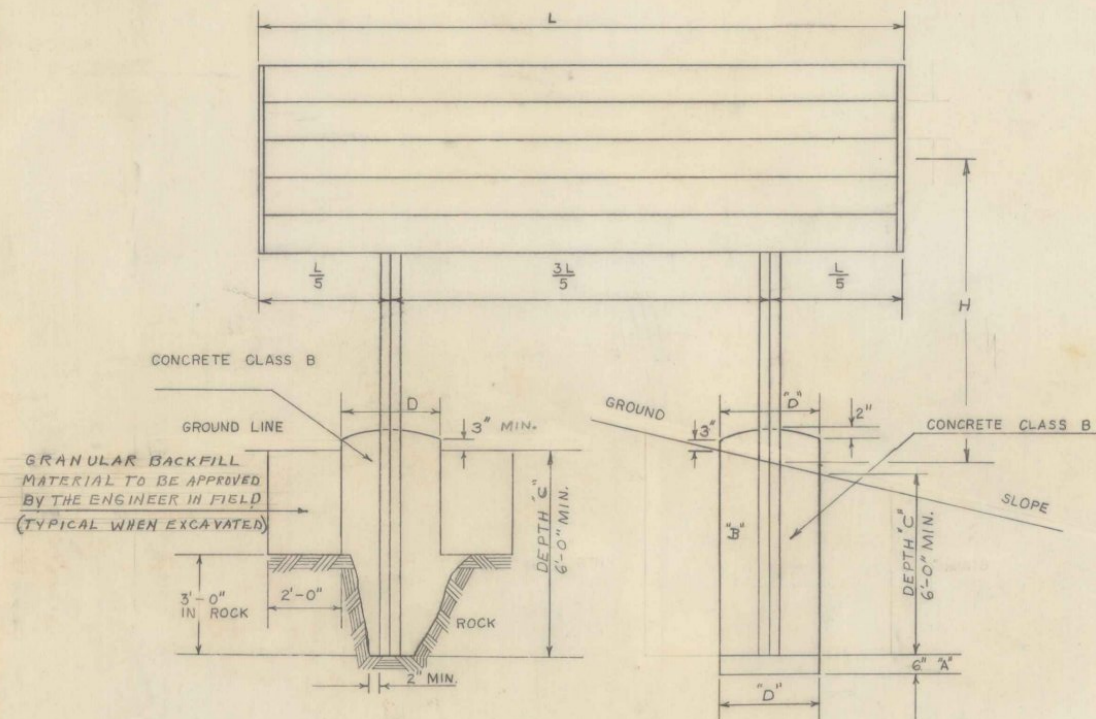
NOTES:

TWO POSTS PER SIGN  
 $S = AH$   
 A = SIGN AREA IN SQUARE FEET  
 H = GROUND ELEVATION OF LONGEST LEG TO CENTER HEIGHT OF SIGN.  
 WIND LOAD = 25 POUNDS PER SQUARE FOOT AS RECOMMENDED BY HIGHWAY RESEARCH COMMITTEE ON TRAFFIC CONTROL DEVICES, MEMORANDUM 2, FEBRUARY 1958, CIRCULAR 355.  
 DESIGN STEEL STRESS = 18,000 POUNDS PER SQUARE INCH.  
 MAXIMUM EARTH PRESSURE = ONE TON PER SQUARE FOOT TABLE BASED ON RUTLEDGE "CHART FOR EMBEDMENT OF POSTS WITH OVERTURNING LOADS."  
 ALL MATERIALS AND WORKMANSHIP TO BE AS SPECIFIED UNDER "STATE OF VERMONT STANDARD SPECIFICATIONS FOR HIGHWAY AND BRIDGE CONSTRUCTION" LATEST EDITION  
 ALL CONCRETE TO BE AS SPECIFIED UNDER ITEM 401-B CONCRETE CLASS B, MODIFIED.  
 ALL STEEL POSTS TO BE A.S.T.M. DESIGNATION A7.  
 POSTS TO BE PAINTED AS SPECIFIED UNDER ITEM 404-A STRUCTURAL STEEL.  
 HOLE FOR SIGN FOOTING MAY BE AUGERED OR DUG WITH EARTH SIDES IF MATERIAL IS FIRM OR LINED WITH A SUITABLE FORM PROPERLY BACKFILLED AND LEFT IN PLACE AS APPROVED BY THE ENGINEER IN THE FIELD. CORRUGATED METAL CULVERT PIPE OR PAPER FORMS MANUFACTURED FOR USE AS CONCRETE COLUMN FORMS WILL BE CONSIDERED ACCEPTABLE. NO PART OF THE FORM USED IS TO SHOW ABOVE GROUND LINE WHEN WORK IS COMPLETED.  
 ALL BACKFILL MATERIAL SHALL MEET MINIMUM SPECIFICATIONS AS DESCRIBED UNDER ITEM 102-A GRANULAR BORROW AND SHALL BE APPROVED BY THE ENGINEER IN THE FIELD.  
 FOOTING DIAMETER "D" AND ITS REQUIRED DEPTH "C" AS SHOWN IN THE ABOVE TABLE IS AN OPTIONAL SELECTION OF THE CONTRACTOR.

GENERAL NOTE

WHEN CONCRETE FOOTINGS ARE NOT REQUIRED, SIGN POSTS SHALL BE SET IN THE GROUND TO THE FOLLOWING MINIMUM DEPTHS UNLESS OTHERWISE SHOWN ON THE PLANS:

POST SIZE	MIN. DEPTH
4 WF 13	6 FT.
6 BJ 8.5	5 1/2 FT.
4 I 7.7	5 FT.
4 U 5.4 X 18'	5 FT.
4 U 5.4 X 16'	4 1/2 FT.
4 U 5.4 X 14'	4 1/2 FT.
4 U 5.4 X 12'	4 FT.
4 U 5.4 X 10'	3 1/2 FT.



NOTE: IN ERECTING POST, FIRST EXCAVATE AND POUR "A" THEN PLACE POST, PLUMB AND POUR "B". THE TIME BETWEEN POURS FOR PROPER CURING OF CONCRETE SHALL BE DETERMINED BY THE ENGINEER IN FIELD. SOLID CONCRETE BLOCK PROPERLY EMBEDDED IN WET CONCRETE MAY BE SUBSTITUTED FOR "A".

TYPE "A" FOOTINGS

REVISIONS AND CORRECTIONS

APPROVED

DATE July 19, 1961

*A. J. Barlow*  
 CHIEF ENGINEER

*A. W. Coleman*  
 TRAFFIC ENGINEER

DESIGNED BY W. SMITH  
 CHECKED BY A. COUCH

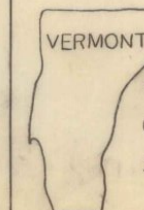
*L. M. Lane*  
 HIGHWAY ENGINEER

*E. W. Stickney*  
 CONSTRUCTION ENGINEER

TRAFFIC SIGNS

SIGN POST FOOTINGS

INTERSTATE PROJECTS



DEPARTMENT  
 OF HIGHWAYS  
 STANDARD

E-5A