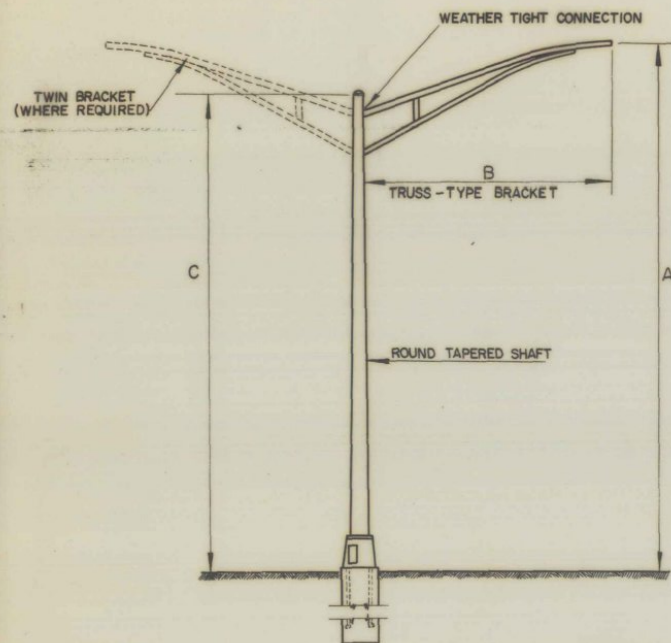
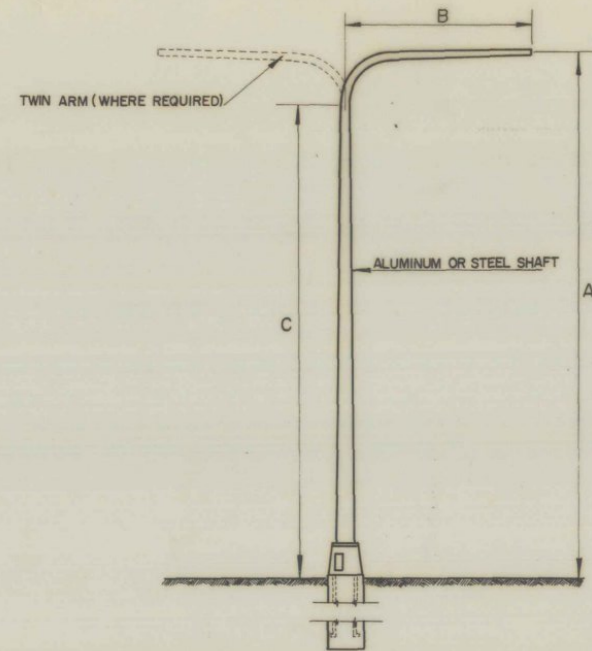


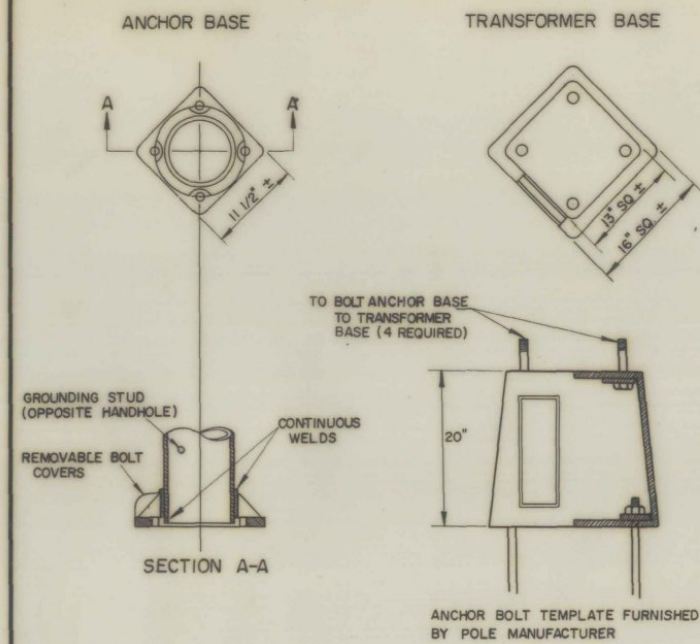
ROUND ALUMINUM AND STEEL POSTS



DAVIT-TYPE POLES



BASES

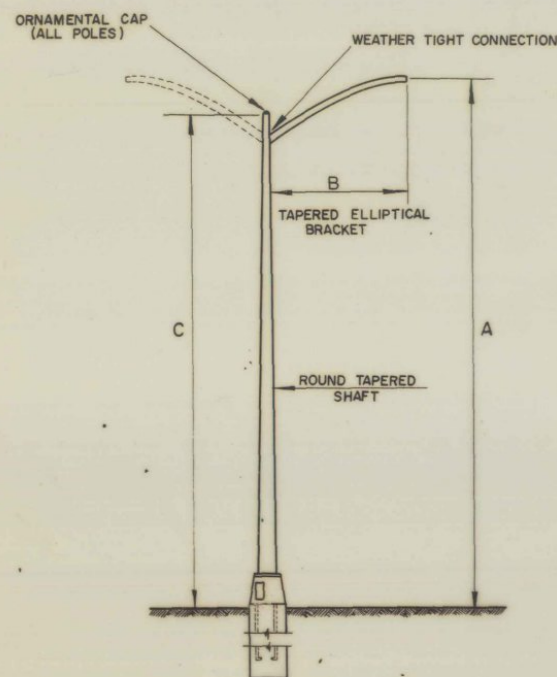


NOTES:

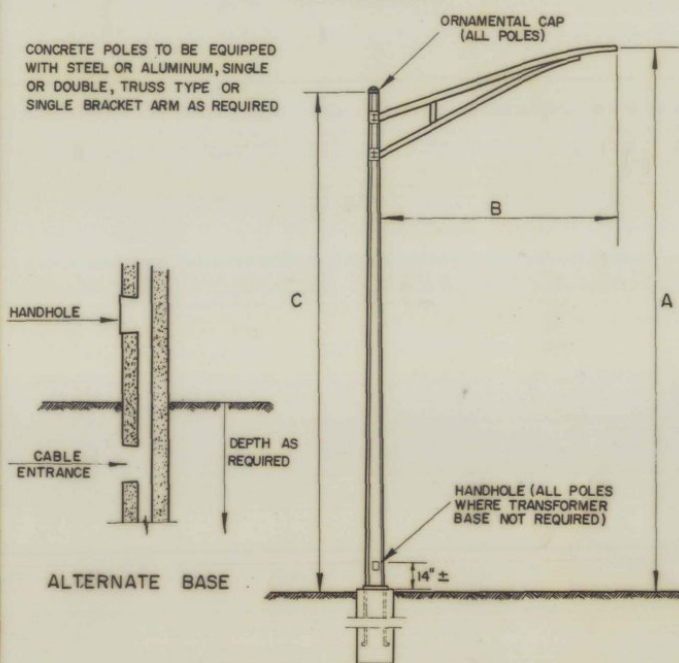
ALL POLES TO BE EQUIPPED WITH TRANSFORMER BASES UNLESS OTHERWISE INDICATED.
 FOR DETAILS OF POLE BASES, SEE SHEET E-51
 ALL BRACKETS TO BE EQUIPPED WITH 2" SLIPFITTER FOR MOUNTING LUMINAIRE UNLESS OTHERWISE INDICATED.

DIMENSIONS:
 A = MOUNTING HEIGHT
 B = BRACKET ARM LENGTH
 C = SHAFT HEIGHT

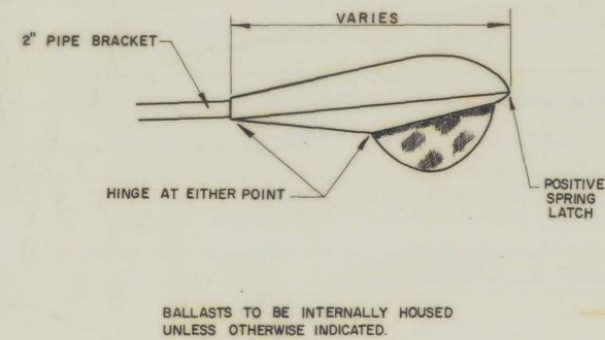
DIMENSIONS SHOWN FOR ANCHOR BASES AND TRANSFORMER BASES MAY VARY SLIGHTLY WITH DIFFERENT MANUFACTURERS.



PRESTRESSED CONCRETE POLES (OCTAGONAL)



LUMINAIRE (MERCURY-TYPE LAMP)



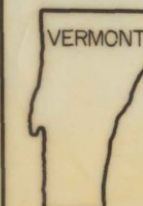
REVISIONS AND CORRECTIONS

APPROVED
 2/28/67
 DATE

R. H. Crowl
 CHIEF ENGINEER
E. H. O'Rourke
 ASST. CHIEF ENGINEER
A. J. Smith
 CONSTRUCTION ENGINEER
A. W. Coleman
 TRAFFIC ENGINEER

STREET LIGHTING

POLES, BASES, BRACKETS AND LUMINAIRES



VERMONT
 DEPARTMENT
 OF HIGHWAYS
 STANDARD

E-52