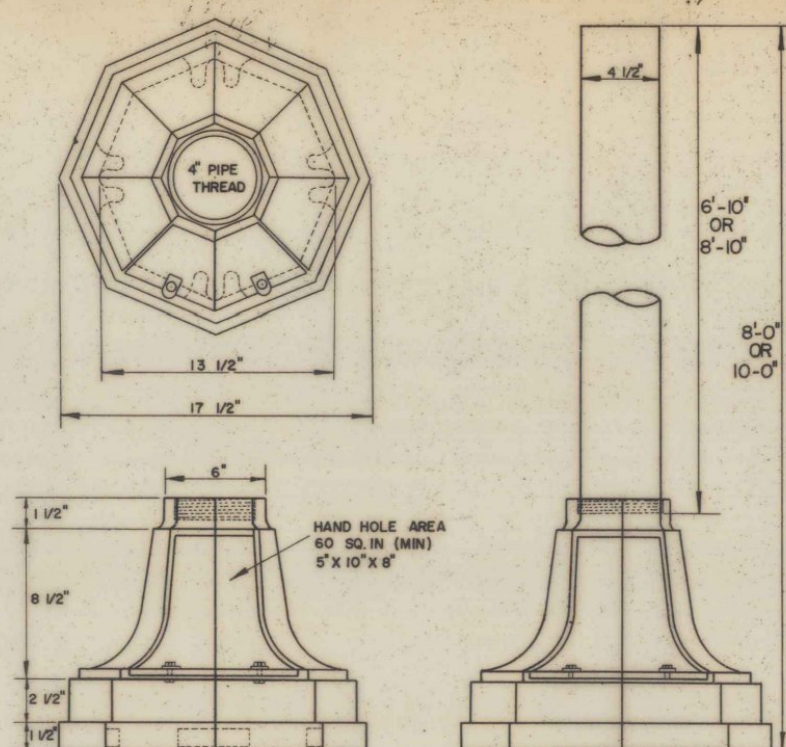
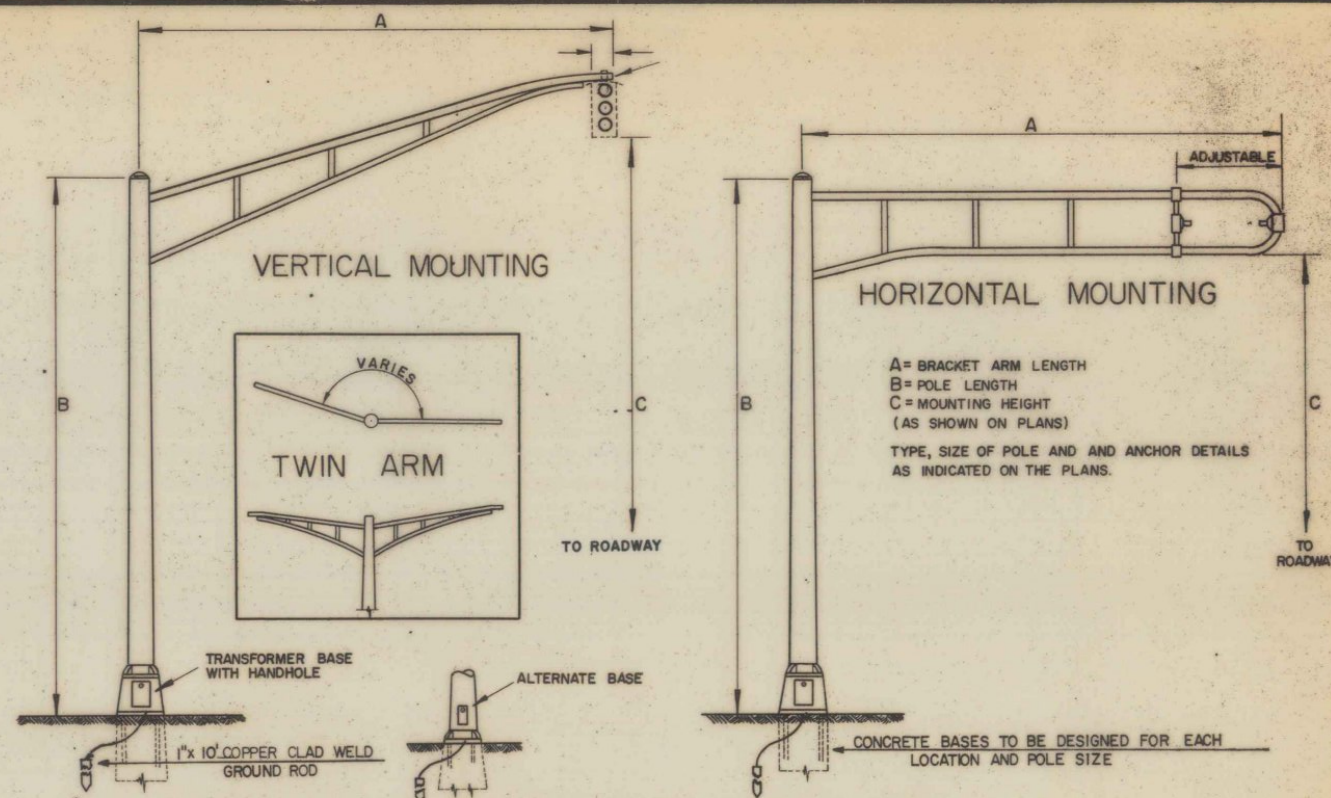


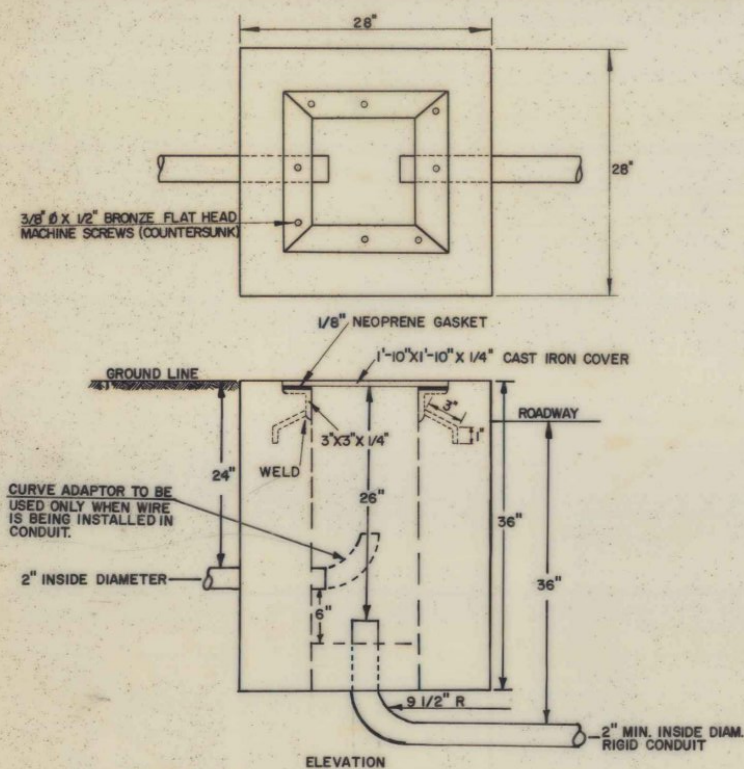
DETAILS OF PULL BOX TYPE "A"



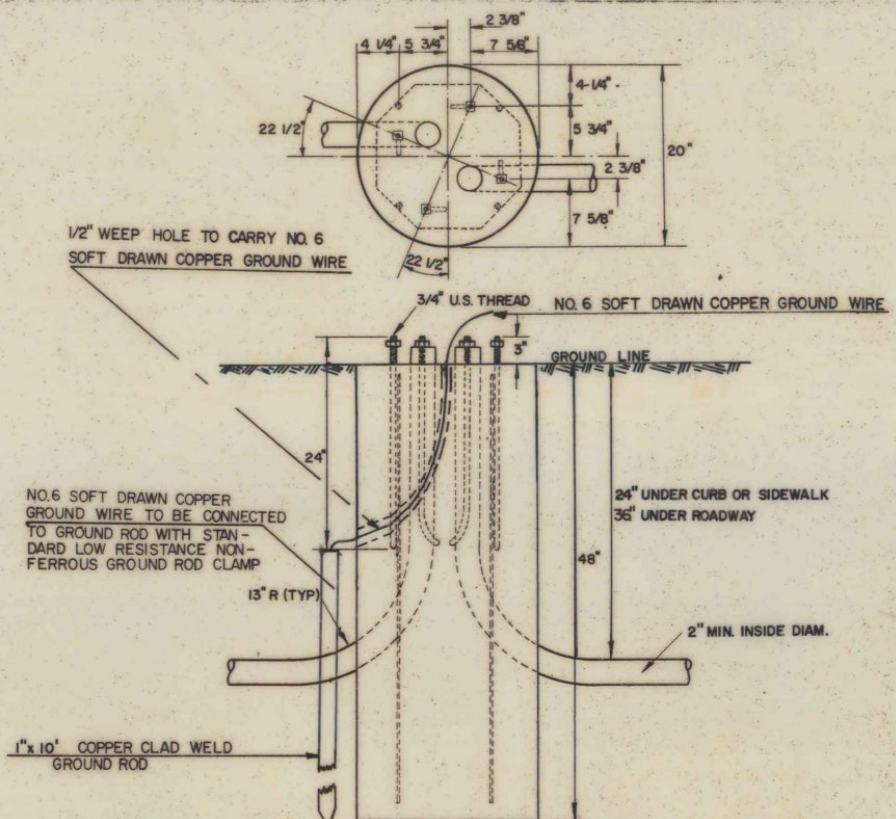
DETAILS OF TRAFFIC SIGNAL PEDESTAL POST & BASE



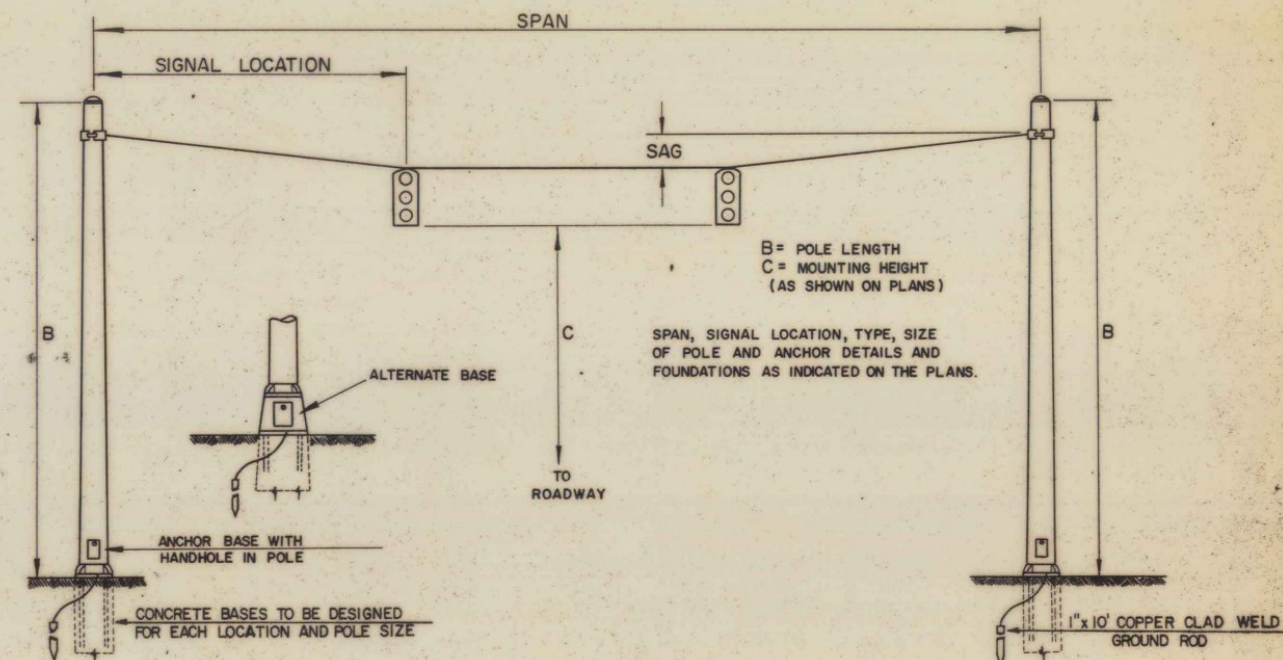
TRAFFIC SIGNAL POLES WITH BRACKET ARMS



DETAILS OF PULL BOX TYPE "B"



DETAILS OF CONCRETE BASE FOR ABOVE PEDESTAL POST



STRAIN POLES WITH SUSPENDED SIGNALS

REVISIONS AND CORRECTIONS

DEC. 14, 1970 DETAIL OF CONCRETE BASE FOR TRAFFIC SIGNAL POST CHANGED TO READ "DETAIL OF CONCRETE BASE FOR ABOVE PEDESTAL POST" TO AVOID CONFUSION WITH CONCRETE BASE FOR STRAIN POLES.

JAN. 21, 1971 GROUND WIRE AND GROUND ROD ADDED TO CONCRETE BASES. REDESIGN OF PULL BOXES AND GROUNDING.

APPROVED
2/29/67
DATE

R. W. Crotwell
CHIEF ENGINEER

E. H. Stebbins
ASST. CHIEF ENGINEER

A. Lusk
CONSTRUCTION ENGINEER

S. W. Coleman
TRAFFIC ENGINEER

TRAFFIC CONTROL SIGNALS



VERMONT
DEPARTMENT
OF HIGHWAYS
STANDARD

E-41