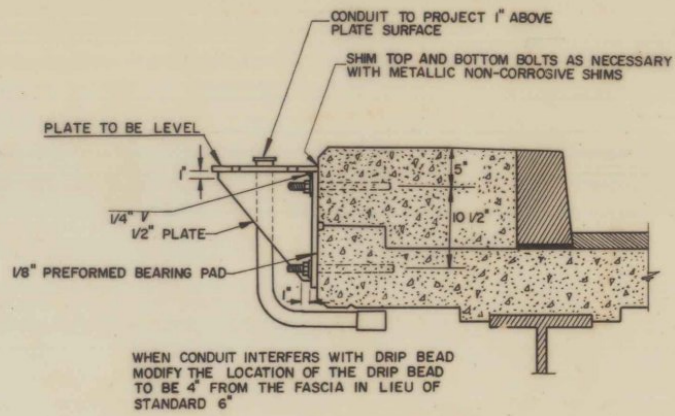
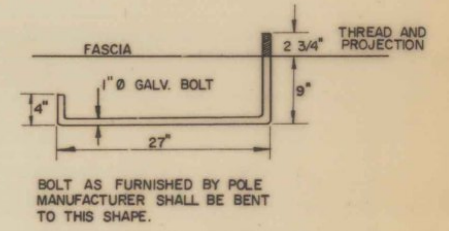


ELEVATION VIEW - FASCIA

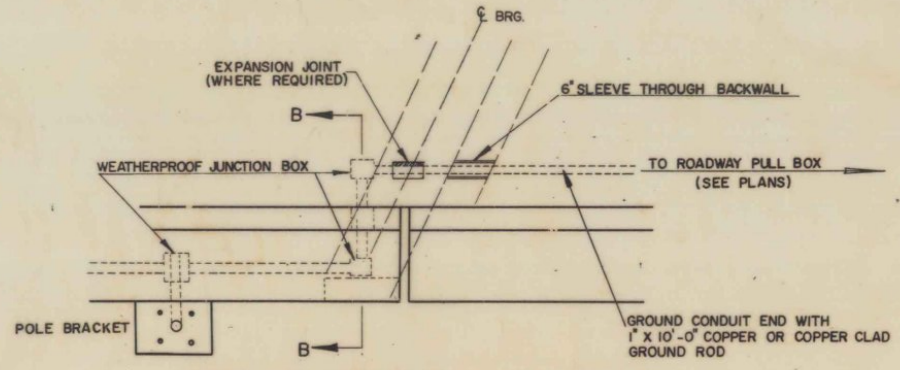


SECTION A-A

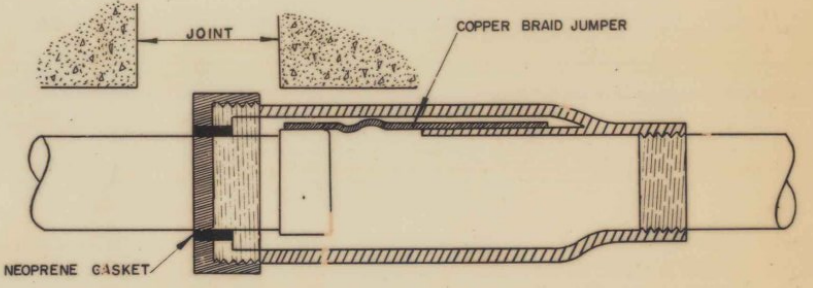


BOLT AS FURNISHED BY POLE MANUFACTURER SHALL BE BENT TO THIS SHAPE.

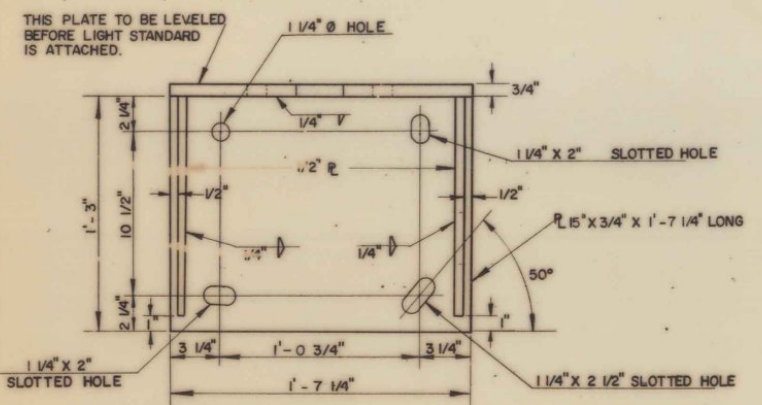
NOTES: JUNCTION BOXES SHALL BE OF THE SAME MATERIAL AND FINISH AS THE CONDUIT.
 SIZE OF JUNCTION BOXES TO CONFORM TO THE REQUIREMENTS OF THE NATIONAL ELECTRICAL CODE.
 CONTRACTOR SHALL SUBMIT DETAILED DRAWINGS OF HANGERS, JUNCTION BOXES, AND CONDUIT EXPANSION JOINTS TO ENGINEER FOR APPROVAL.
 ANCHOR BOLTS, NUTS AND WASHERS AND TEMPLATE FOR ANCHOR BOLTS TO BE OBTAINED BY CONTRACTOR FROM POLE MANUFACTURER
 POLES ON BRIDGES NOT EQUIPPED WITH TRANSFORMER BASES
 BRACKET ASSEMBLY AND ANCHOR BOLTS SHALL BE GALVANIZED AFTER FABRICATION



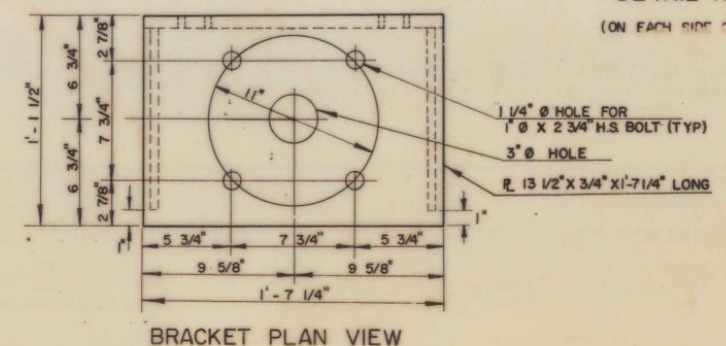
DETAIL AT ABUTMENT
(ON EACH SIDE OF BOTH ABUTMENTS)



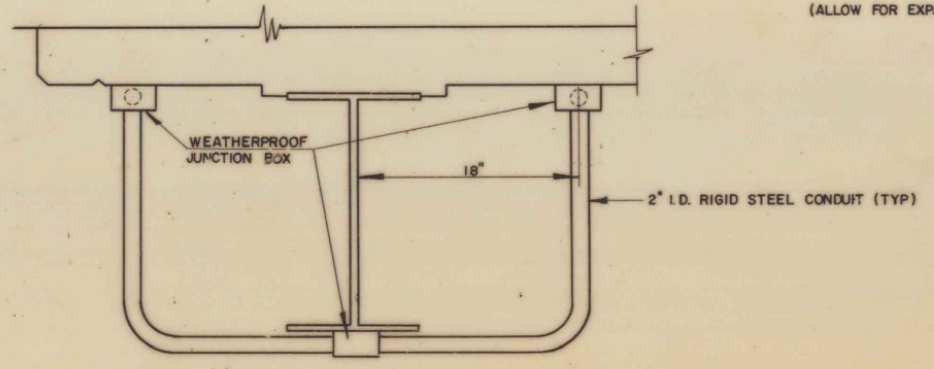
CONDUIT EXPANSION JOINT
(ALLOW FOR EXPANSION AS INDICATED ON THE PLANS)



BRACKET ELEVATION VIEW



BRACKET PLAN VIEW

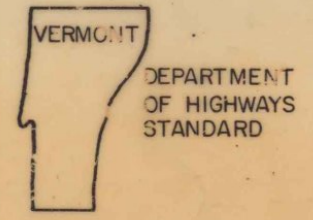


SECTION B-B

REVISIONS AND CORRECTIONS

APPROVED: DATE Dec 29, 1971
R. H. Arnold
 CHIEF ENGINEER
E. H. Stinchey
 ASST. CHIEF ENGINEER
G. M. Lane
 HIGHWAY ENGINEER

TYPICAL BRIDGE LIGHTING DETAILS



E-40