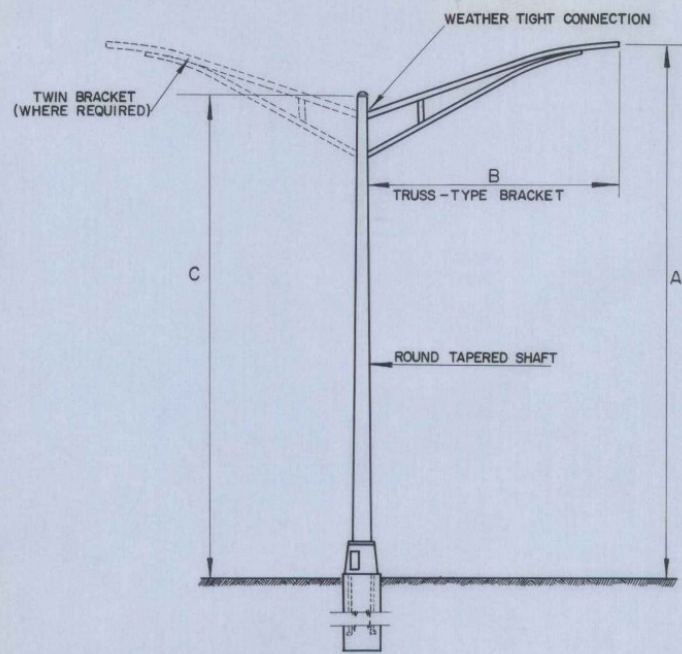
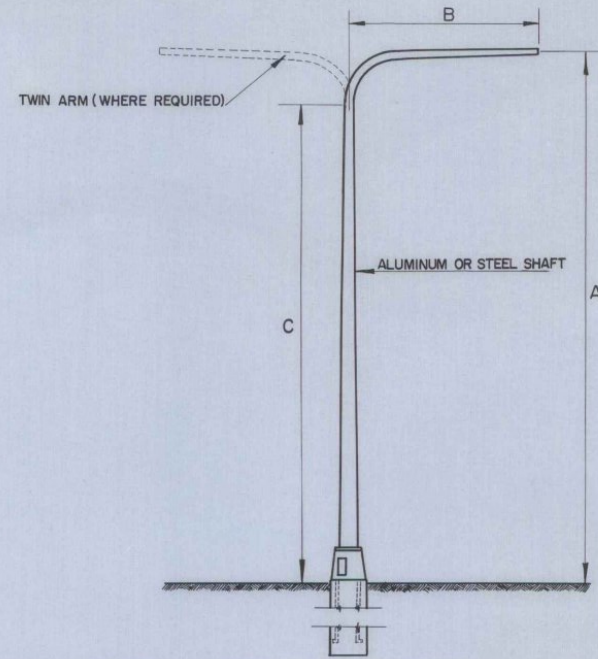


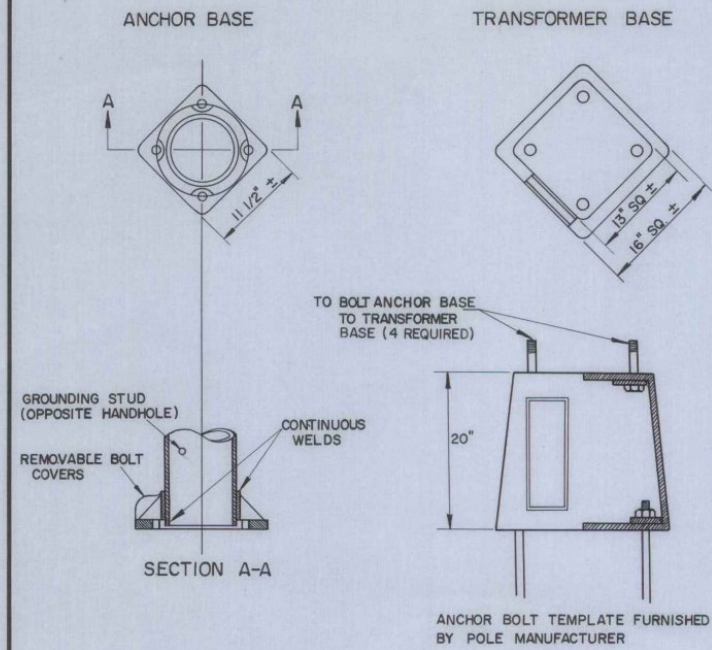
ROUND ALUMINUM AND STEEL POSTS



DAVIT-TYPE POLES



BASES

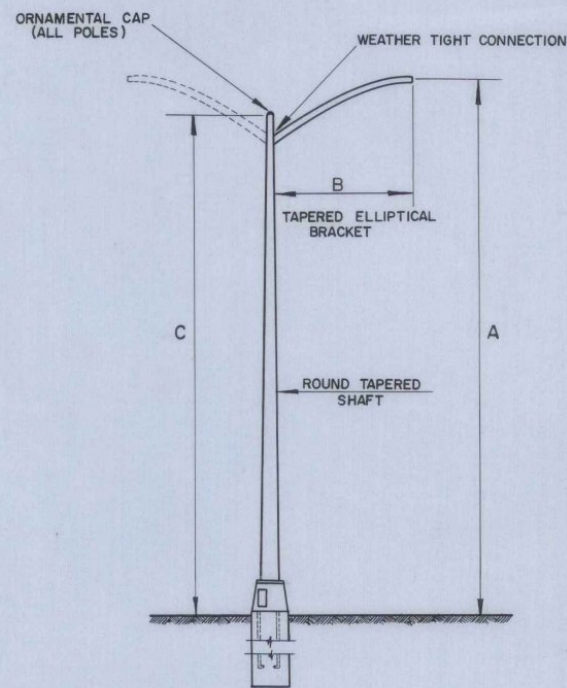


NOTES:

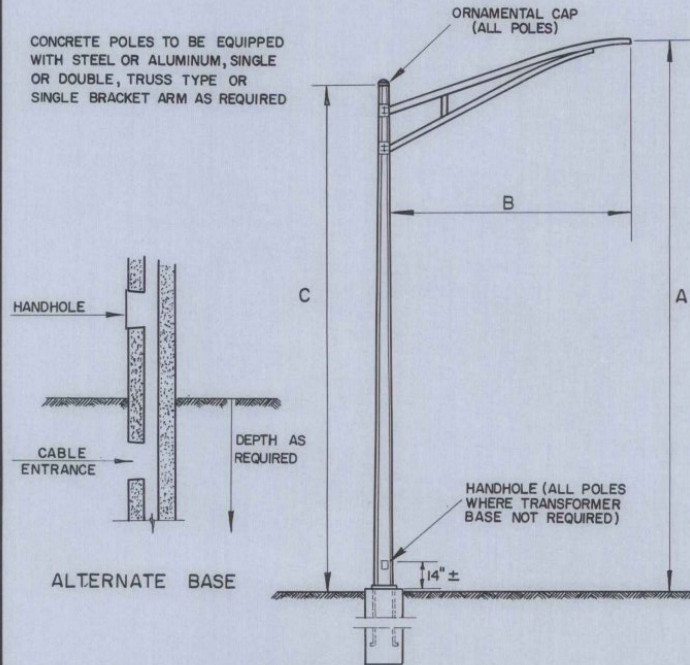
ALL POLES TO BE EQUIPPED WITH ANCHOR BASES UNLESS OTHERWISE INDICATED.
 FOR DETAILS OF POLE BASES, SEE SHEET E-37
 ALL BRACKETS TO BE EQUIPPED WITH 2" SLIPFITTER FOR MOUNTING LUMINAIRE UNLESS OTHERWISE INDICATED.

DIMENSIONS:
 A = MOUNTING HEIGHT
 B = BRACKET ARM LENGTH
 C = SHAFT HEIGHT

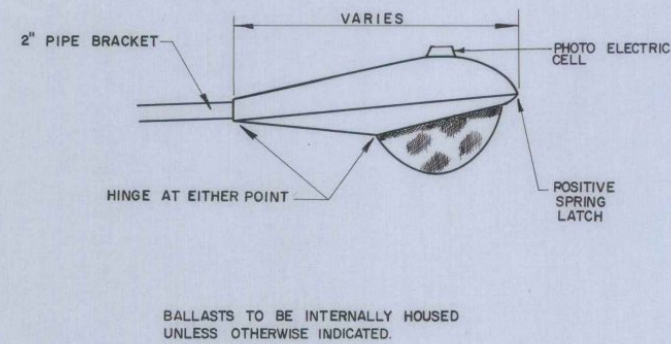
DIMENSIONS SHOWN FOR ANCHOR BASES AND TRANSFORMER BASES MAY VARY SLIGHTLY WITH DIFFERENT MANUFACTURERS.



PRESTRESSED CONCRETE POLES (OCTAGONAL)



LUMINAIRE (MERCURY-TYPE LAMP)



REVISIONS AND CORRECTIONS

APPROVED

DATE *Dec. 29, 1971*

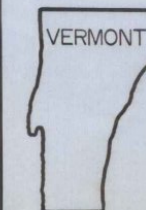
R. H. Crandall
 CHIEF ENGINEER

E. W. Stickney
 ASST. CHIEF ENGINEER

G. M. Lane
 HIGHWAY ENGINEER

STREET LIGHTING

POLES, BASES, BRACKETS AND LUMINAIRES



DEPARTMENT OF HIGHWAYS STANDARD

E-38