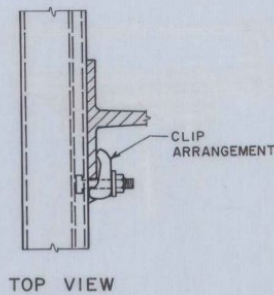


TEE BAR

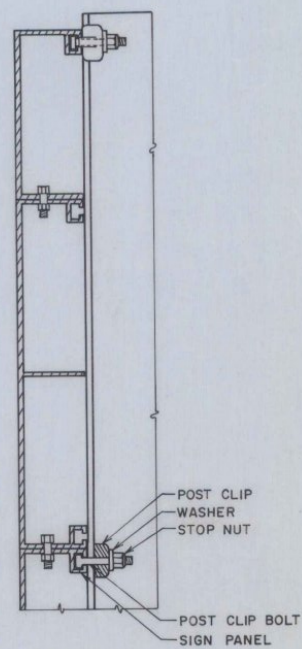
f 1/4"
 n 5/16"
 m 5/16"
 t 1/4"
 WEIGHT 1.26 LBS/LF

NOTES

1. THE ALUMINUM TEE BAR SHALL BE OF 6063T6 ALLOY MINIMUM OF 5 FEET IN LENGTH.
2. EXTRUDED ALUMINUM PANEL SIGN CLIP SHALL BE OF 356 T6 ALLOY FABRICATED TO GIVE PROPER CLAMPING ON ALL FLANGES (TAPERED OR PARALLEL) FROM 1/8" TO 19/32" IN THICKNESS. A FLAT WASHER SHALL BE USED UNDER THE NUT.
3. FLAT PLYWOOD PANEL SIGN CLIPS SHALL BE OF 6063T6 ALLOY MACHINE FINISHED AND FABRICATED TO GIVE PROPER CLAMPING ON ALL FLANGES (TAPERED OR PARALLEL) FROM 1/8" TO 19/32" IN THICKNESS. A FLAT WASHER SHALL BE USED UNDER THE NUT.
4. BOLTS, NUTS AND WASHERS SHALL BE OF STAINLESS STEEL. BOLTS SHALL BE 3/8" DIAMETER, 2 INCHES IN LENGTH WITH A HEAD CAPABLE OF BEING INSERTED INTO EXTRUDED ALUMINUM SIGN PANEL SLOTS. NUTS SHALL BE OF A LOCK NUT DESIGN, THREADS MATCHING BOLT. THE WASHER SHALL HAVE A 25/64" I.D. x 3/4" O.D. x .091 THICKNESS.

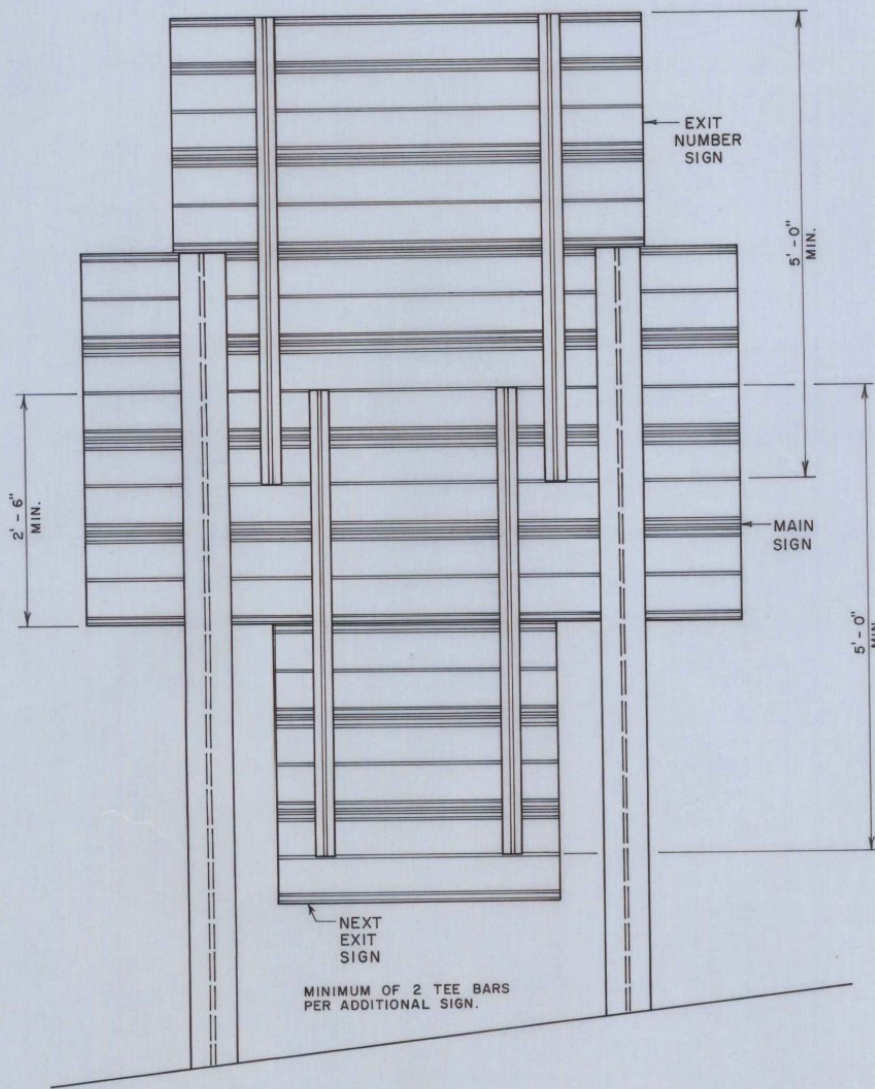


TOP VIEW



SIDE VIEW

SIGN MOUNTING DETAIL



TEE BAR MOUNTING DETAIL



FLAT PLYWOOD PANEL SIGN CLIP



EXTRUDED ALUMINUM PANEL SIGN CLIP

REVISIONS AND CORRECTIONS

APPROVED: DATE 4-28-78
 S. J. Gage
 CHIEF ENGINEER
 Arthur J. Goss
 CHIEF OF DESIGN
 Louis J. Jones
 TRANSPORTATION DESIGN ENGINEER

TRAFFIC SIGNS

TEE BAR
 AUXILIARY SIGN MOUNTING

VERMONT
 DEPARTMENT
 OF HIGHWAYS
 STANDARD

E-24B