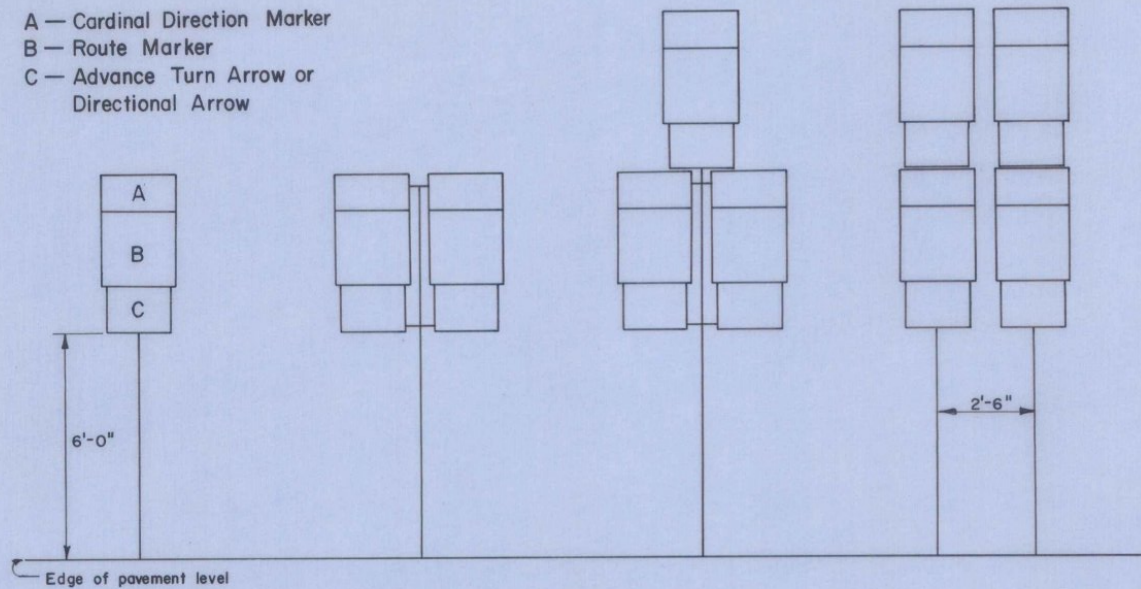


STANDARD ARRANGEMENT OF ROUTE TURN AND DIRECTIONAL ASSEMBLIES

- A - Cardinal Direction Marker
- B - Route Marker
- C - Advance Turn Arrow or Directional Arrow



In business and residential districts, or where parking is likely to occur, the height shall be 7 ft.

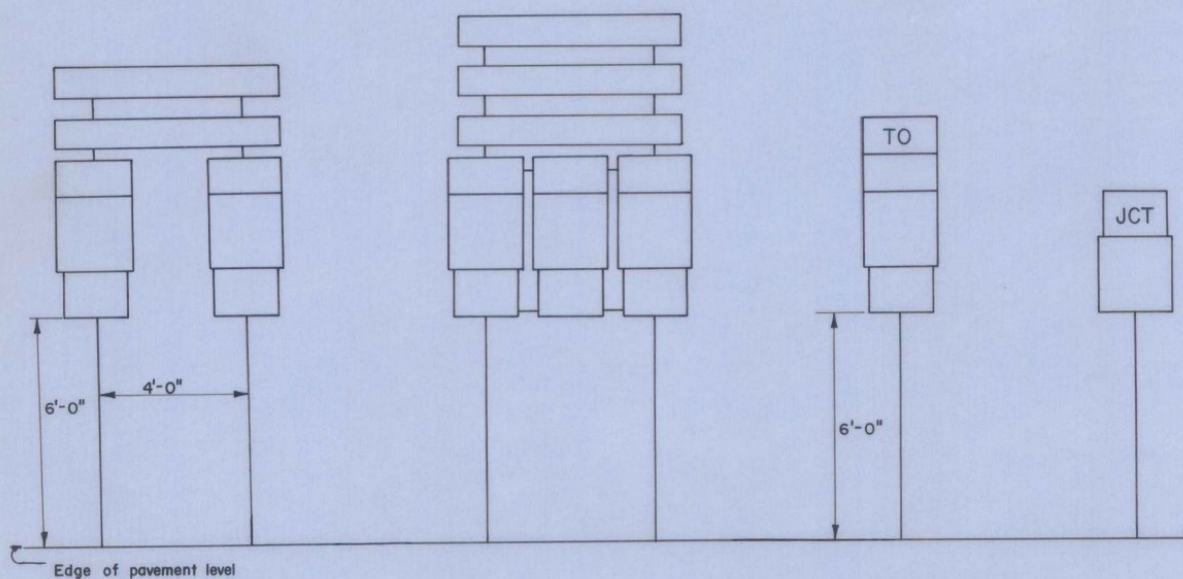
COMBINATION DIRECTIONAL AND DESTINATION ASSEMBLIES

TRAILBLAZER ASSEMBLY

JUNCTION ASSEMBLY

DESTINATION ASSEMBLY

STANDARD FRAMES FOR ROUTE MARKER ASSEMBLIES



In business and residential districts, or where parking is likely to occur, the height shall be 7 ft.

GENERAL NOTES:

MATERIALS;

The sign base material for standard destination signs shall be high density overlaid plywood 5/8 inch thick or flat sheet aluminum 0.125 inch thick.

The reflective material shall be green reflective sheeting applied to the entire background of the sign. The text shall be cut-out reflectorized white or silver letters.

COLORS;

Destination signs shall have a reflectorized white or silver text on a reflectorized green background.

LETTERING;

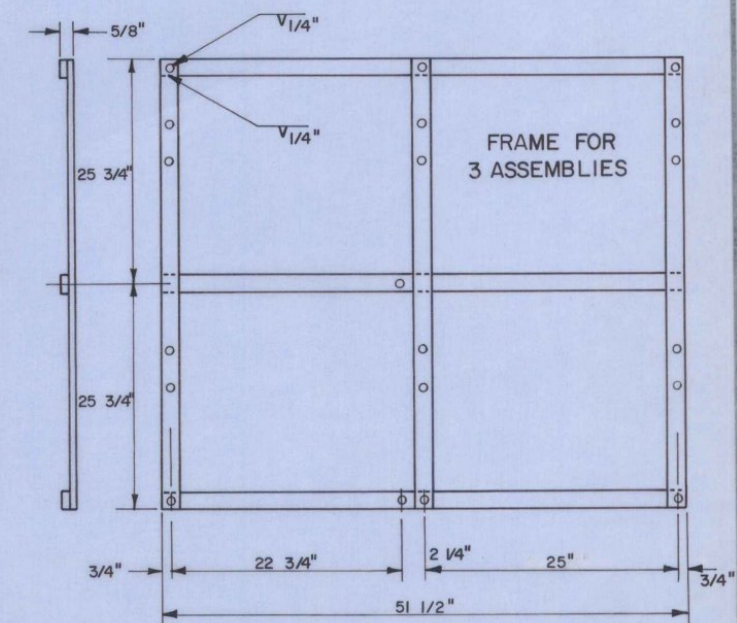
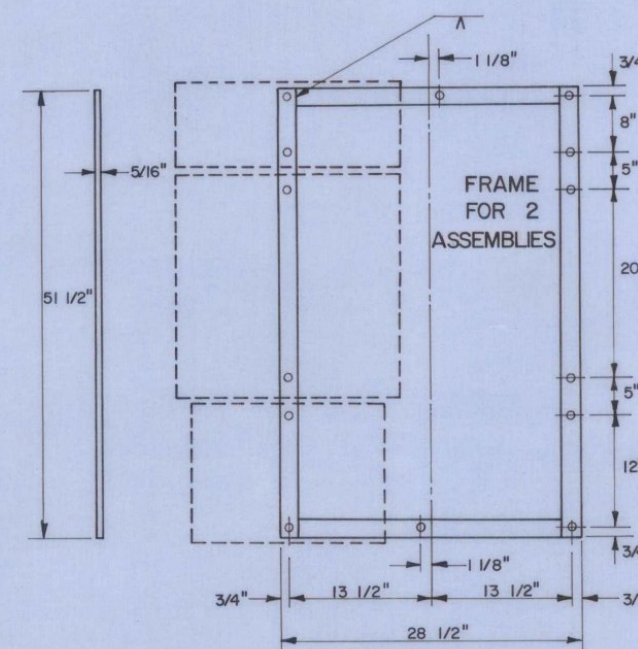
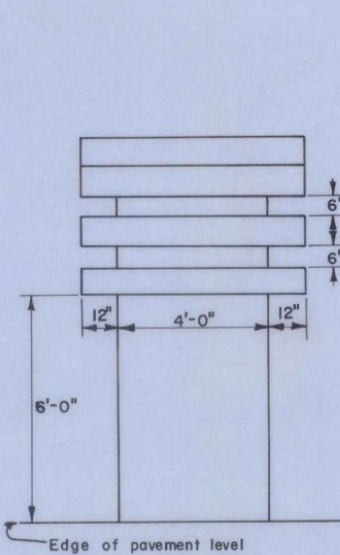
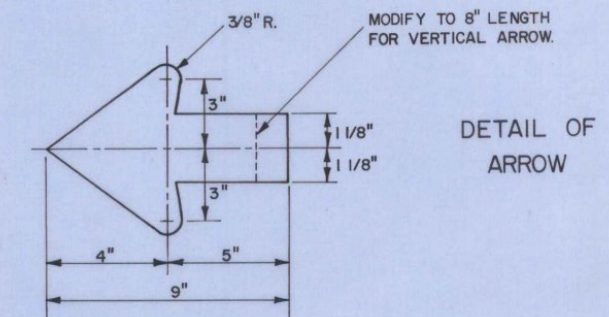
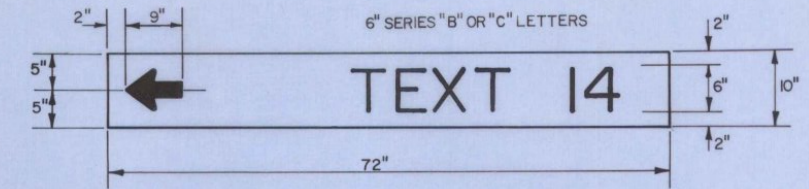
Letters and digits shall conform with the standard alphabets for highway signs approved by the National Joint Committee on Uniform Traffic Control Devices.

SPECIFICATIONS;

Destination signs shall meet the state specifications for "Traffic Signs."

For designs of Route Markers and auxiliary markers, see Standard Sheets E-11, E-12, and E-13.

STANDARD DESTINATION SIGNS



Standard frames shall be 5/16" x 1/2" wrought iron welded. All holes shall be 7/16" diameter. For other sign combinations than above, the frame dimensions and hole spacing shall be modified as necessary. The frame shall be painted with one coat of primer and a second coat of good grade black paint.

REVISIONS AND CORRECTIONS

APPROVED:

DATE: Dec. 29, 1971

R.H. Conrod
CHIEF ENGINEER

E.H. Stickney
ASST. CHIEF ENGINEER

G.M. Lane
HIGHWAY ENGINEER

GUIDE SIGNS

VERMONT
DEPARTMENT
OF HIGHWAYS
STANDARD

E-23

Checked 9/17/71 W/HG