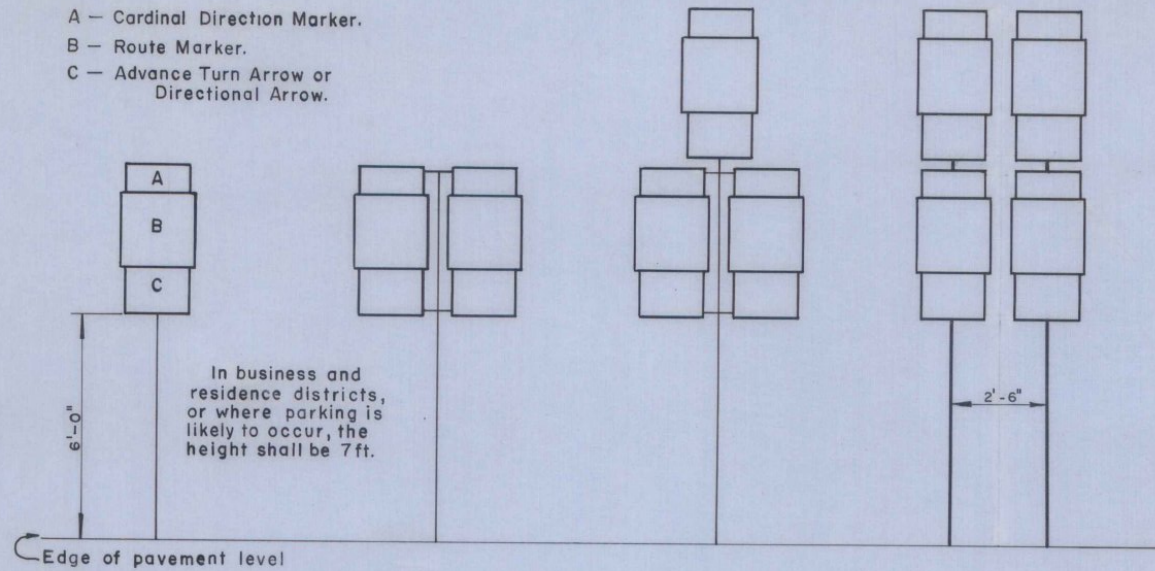


STANDARD ARRANGEMENT OF ROUTE TURN AND DIRECTIONAL ASSEMBLIES

- A - Cardinal Direction Marker.
- B - Route Marker.
- C - Advance Turn Arrow or Directional Arrow.



MATERIALS

The sign base material for standard destination signs shall be high density overlaid plywood 5/8" inch thick or flat sheet aluminum 0.125 inch thick.

The reflective material shall be white or silver reflective sheeting applied to the entire background of the sign. The text may be lettering film, silk screened, or hand lettered.

COLORS

Destination signs shall have black texts on reflectorized white or silver backgrounds.

LETTERING

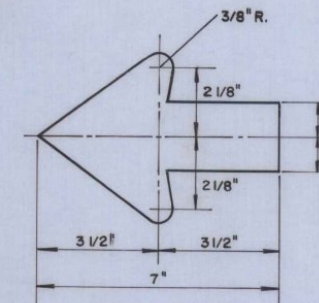
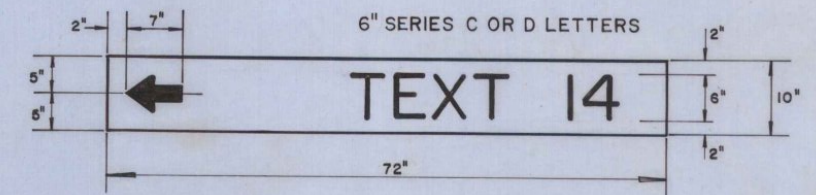
Letters and digits shall conform with the standard alphabets for highway signs approved by the National Joint Committee on Uniform Traffic Control Devices.

SPECIFICATIONS

Destination signs shall meet the state specifications for "Traffic Signs"

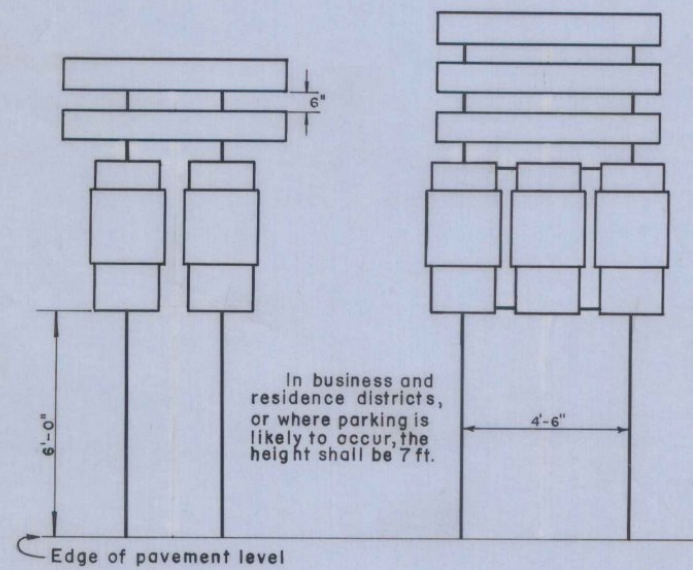
For designs of Route Markers and auxiliary markers, see Standard Sheets E-11, E-12 and E-13.

STANDARD DESTINATION SIGNS

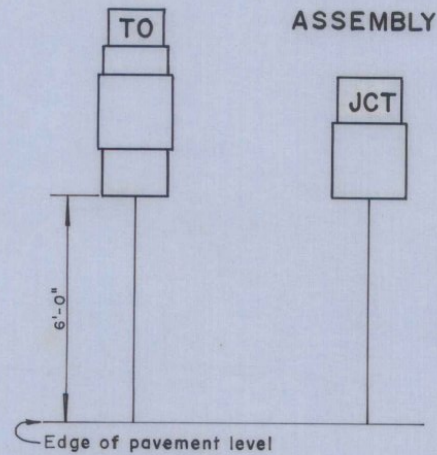


DETAIL OF ARROW

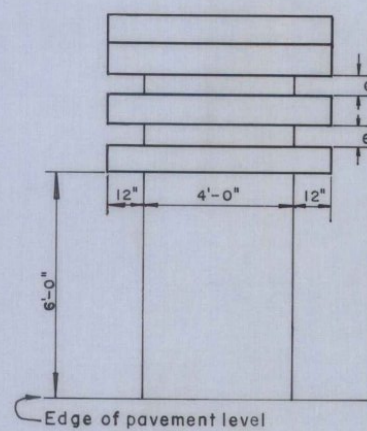
COMBINATION DIRECTIONAL AND DESTINATION ASSEMBLIES



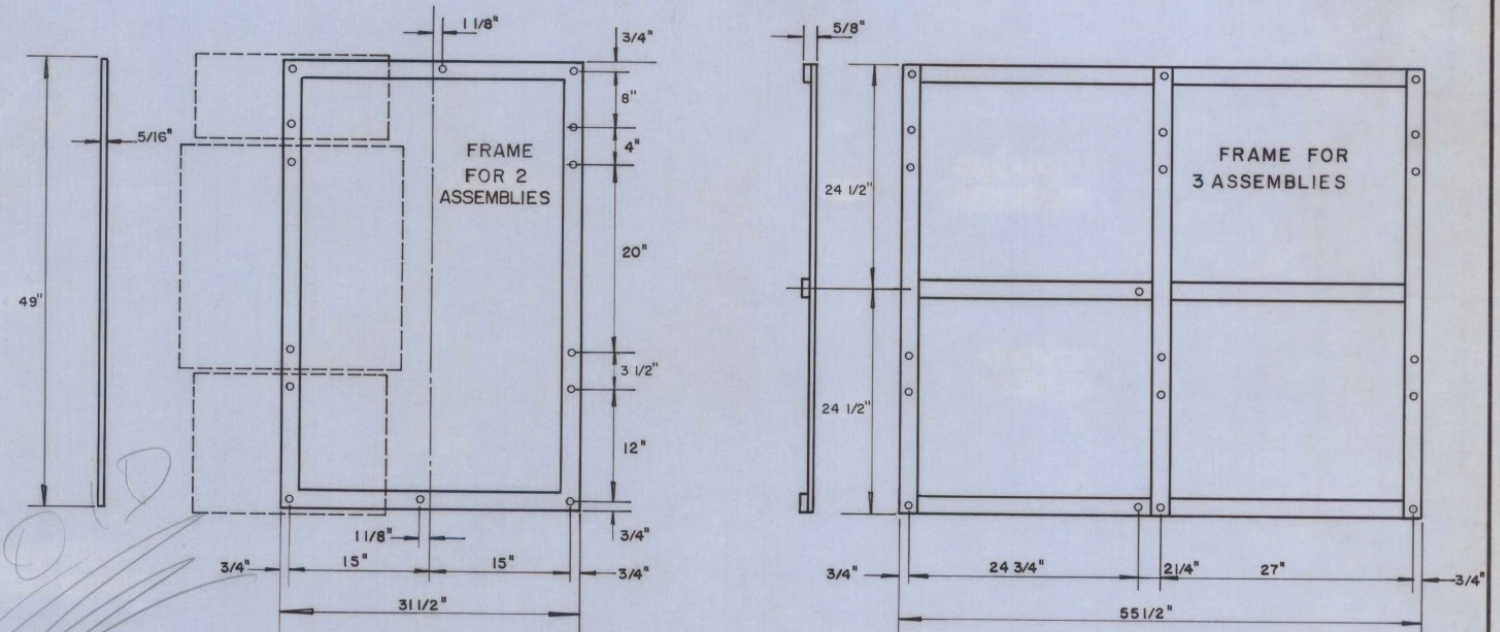
TRAILBLAZER ASSEMBLY



DESTINATION ASSEMBLY



STANDARD FRAMES FOR ROUTE MARKER ASSEMBLIES



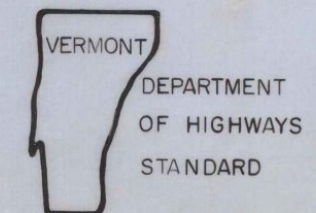
REVISIONS AND CORRECTIONS

APPROVED
Dec 21, 1971

R.H. Arnold
CHIEF ENGINEER
E.H. Stucky
ASST. CHIEF ENGINEER
G.M. Lane
HIGHWAY ENGINEER

DRAWN A.W.C.
TRACED R.L.E.

TRAFFIC SIGNS
GUIDE SIGNS



E-23