

TYPICAL PLACEMENT OF TYPE I DELINEATORS ON INTERSTATE ROUTES

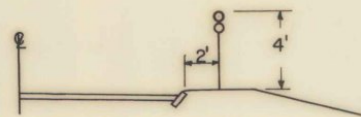
TYPE I DELINEATORS, WITH THE APPROPRIATE DELINEATOR PLAQUES SHALL BE ERECTED CONTINUOUSLY ALONG THE RIGHT SIDE OF INTERSTATE ROADWAYS BETWEEN MILE POSTS.

THE TYPE I DELINEATORS SHALL BE OMITTED ALONG DECELERATION AND ACCELERATION LANES, BUT THE SUCCEEDING SPACING SHALL BE AS IF THE DELINEATORS HAD BEEN ERECTED CONTINUOUSLY, AND SHALL SO INDICATE.

TYPE I DELINEATORS AND MILE POSTS ARE TO BE COMPUTED AND MARKED IN THE FIELD (LOCATION OF), BY THE ENGINEER IN ACCORDANCE WITH THE LATEST REVISION OF THE DEPARTMENT'S POLICY ON LOCATION MARKING FOR VERMONT INTERSTATE HIGHWAYS.

TYPE I DELINEATORS WITHOUT PLAQUES SHALL BE ERECTED CONTINUOUSLY ALONG THE LEFT OR MEDIAN SIDE OF INTERSTATE HIGHWAYS, SPACED OPPOSITE EVERY SECOND TYPE I DELINEATOR ON THE RIGHT SIDE, AND CONTINUED AT APPROXIMATELY THE SAME SPACING THROUGH INTERCHANGES AND REST AREAS WHERE THERE MAY NOT BE ANY TYPE I DELINEATORS ON THE RIGHT SIDE. THE SAME LATERAL PLACEMENT SHALL BE FOLLOWED ON THE LEFT AS ON THE RIGHT.

FOR MOUNTING DELINEATORS ON BRIDGES, SEE STANDARD E-20A.



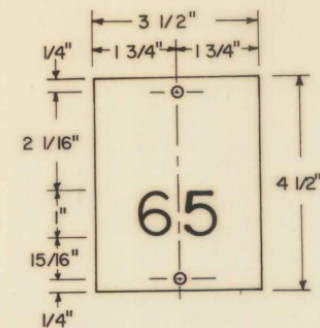
TYPICAL PLACEMENT OF TYPE II DELINEATORS ON RAMP AND SPEED CHANGE LANES

TYPE II DELINEATORS SHALL BE ERECTED CONTINUOUSLY ALONG THE RIGHT SIDE OF THE DECELERATION AND ACCELERATION LANES, SPACED AS SHOWN ON THE PLANS. THEY SHALL BE ERECTED ON THE RIGHT OR LEFT SIDE OF THE RAMP AS INDICATED ON THE PLANS.

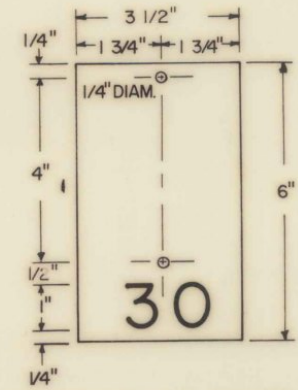
COLORS:
THE GREEN SHALL CONFORM WITH THE STANDARD GREEN COLOR ADOPTED BY THE AMERICAN ASSOCIATION OF STATE HIGHWAY OFFICIALS AND APPROVED BY THE U.S. DEPARTMENT OF TRANSPORTATION, FEDERAL HIGHWAY ADMINISTRATION.

SPECIFICATIONS:
DELINEATORS REFLECTOR UNITS, DELINEATOR PLAQUES, AND DELINEATOR POSTS SHALL MEET THE STANDARD STATE SPECIFICATIONS FOR DELINEATORS.

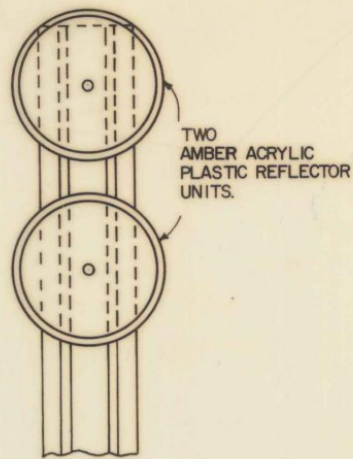
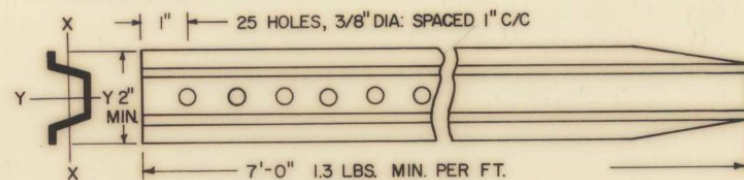
DELINEATOR PLAQUE PART "A"
(THE NUMERALS ON PART "A" INDICATE THE MILE.)



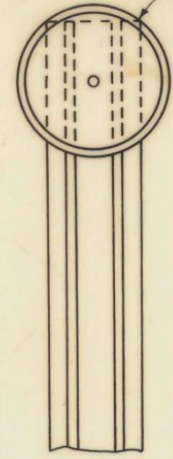
DELINEATOR PLAQUE PART "B"
(THE NUMERAL ON PART "B" INDICATES UNITS OF FIVE ONE-HUNDRETHS OF A MILE BETWEEN MILE POSTS.)



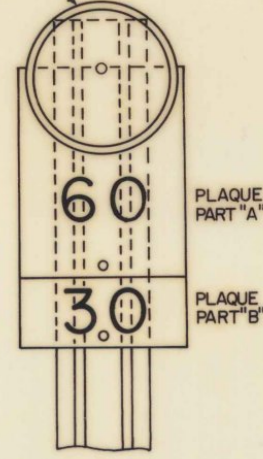
YY = 0.11 IN³ MIN.
XX = 0.08 IN³ MIN.



TYPE II

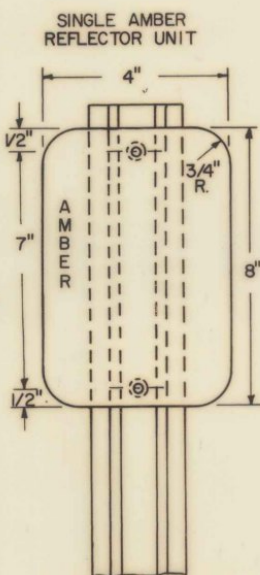


TYPE I WITHOUT PLAQUE



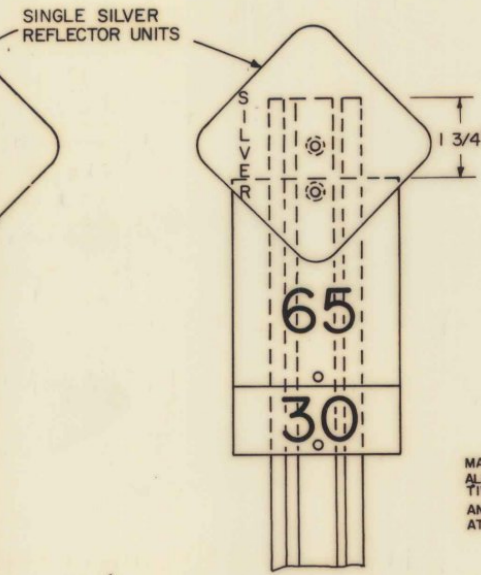
TYPE I WITH PLAQUE

DELINEATORS WITH ACRYLIC PLASTIC REFLECTORS

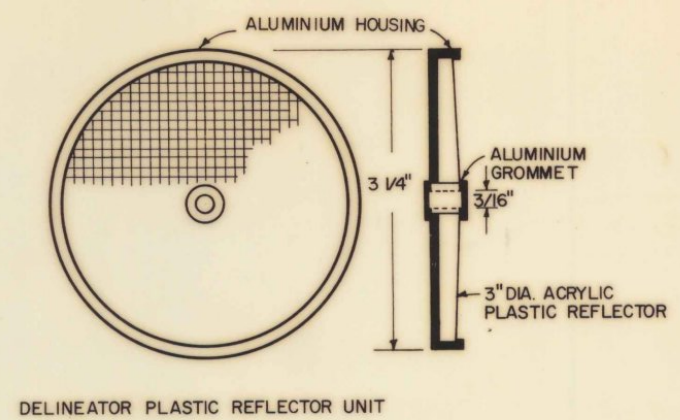


DELINEATORS WITH REFLECTIVE SHEETING

A DELINEATOR REFLECTOR UNIT WITH ITS DELINEATOR PLAQUES SHALL BE MOUNTED ON THE POST WITH TWO OR THREE 3/16" DIA. BY 1 1/2" LONG ALUMINIUM BOLTS WITH 1/2" DIA. ALUMINIUM VANDLE RESISTANT NUTS, OR A 3/16" DIA. BY 1 1/2" LONG VANDLE RESISTANT FASTENERS.



SINGLE SILVER REFLECTOR UNITS



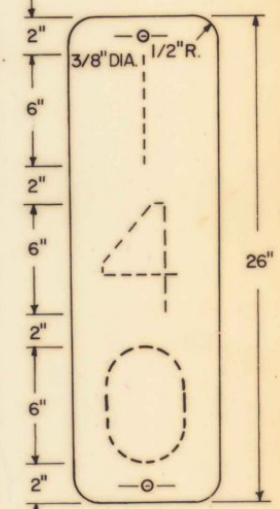
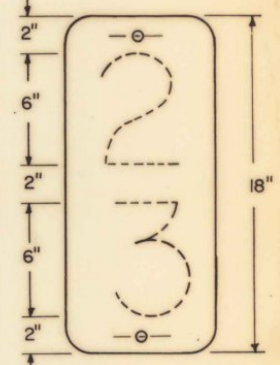
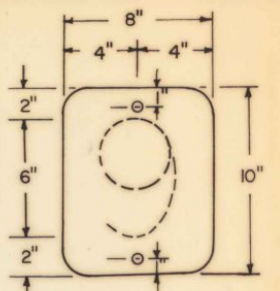
DELINEATOR PLASTIC REFLECTOR UNIT

DELINEATOR REFLECTIVE SHEETING UNIT

MATERIAL FOR REFLECTIVE SHEETING DELINEATORS SHALL BE A 0.063" ALUMINIUM BACKING WITH A SILVER OR AMBER HIGH INTENSITY REFLECTIVE SHEETING MEETING REFLECTIVE PROPERTIES AS FOLLOWS:

ANGLE OF INCIDENCE AT 1/3° DIVERGENCE	REFLECTIVE BRILLIANCE	
	SILVER	AMBER
0°	450	175
15°	420	165
45°	100	90

THE BRILLIANCE WHEN TOTAL WET WILL BE AT LEAST 90% OF THE ABOVE VALUES.



MILE-POST SIGNS

MILE-POST SIGNS SHALL BE OF 0.060" FLAT SHEET ALUMINIUM OR 18 GAGE GALVANIZED FLAT SHEET STEEL, WITH A GREEN BAKED ENAMEL FINISH, AND NUMERALS OF WHITE OR SILVER REFLECTIVE SHEETING.

MILE-POST SIGNS SHALL BE MOUNTED ON STANDARD DELINEATOR POSTS, PLACED AS FOR TYPE I DELINEATORS EXCEPT THAT THE BOTTOM OF A MILE-POST SIGN SHALL BE A MINIMUM OF 3 INCHES ABOVE THE TOP OF A GROUND RAIL POST. MILE-POSTS SHALL BE LOCATED BY THE ENGINEER.

MILE-POST SIGNS SHALL MEET THE STANDARD STATE SPECIFICATIONS FOR TRAFFIC SIGNS.

REVISIONS AND CORRECTIONS

APPROVED:

DATE: July 1, 1971
 R. W. Crowell
 CHIEF ENGINEER
 R. O. Munn
 ASST. CHIEF ENGINEER
 C. F. Knapp
 TRAFFIC ENGINEER

DELINEATORS AND MILEPOSTS

VERMONT
DEPARTMENT
OF HIGHWAYS
STANDARD

E-20