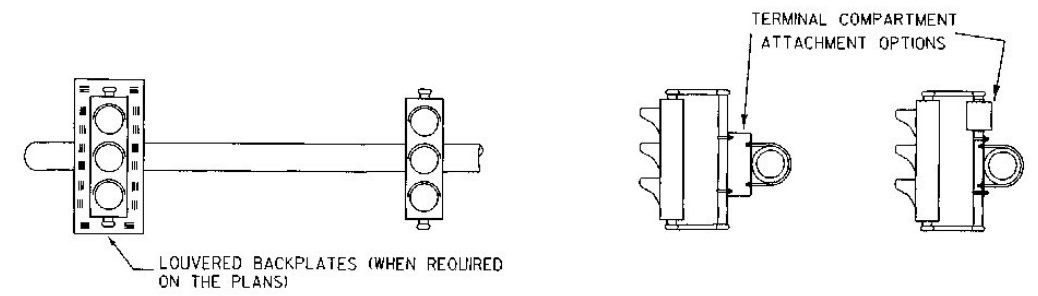
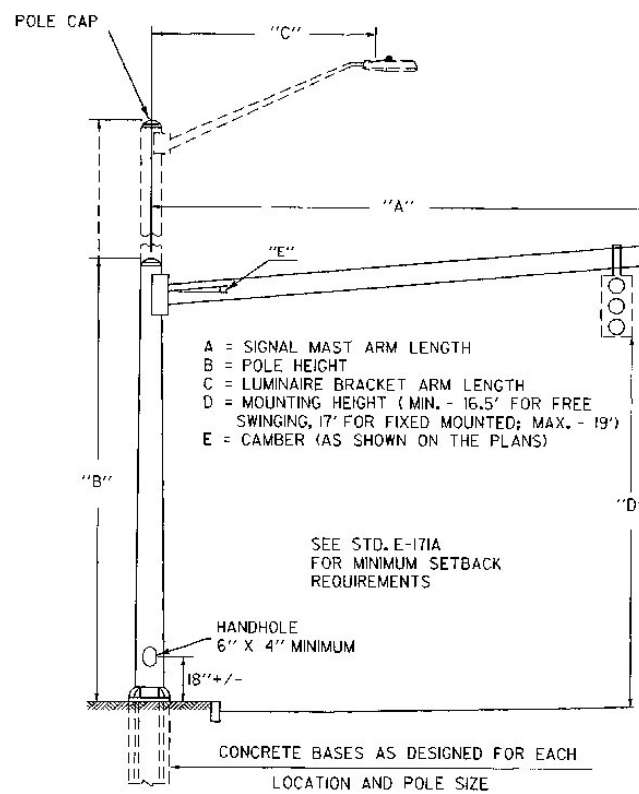
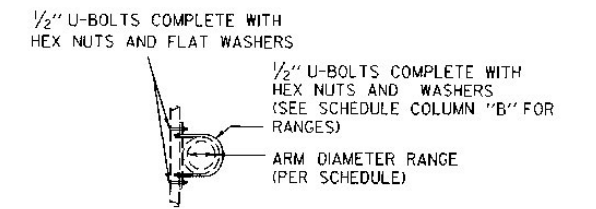


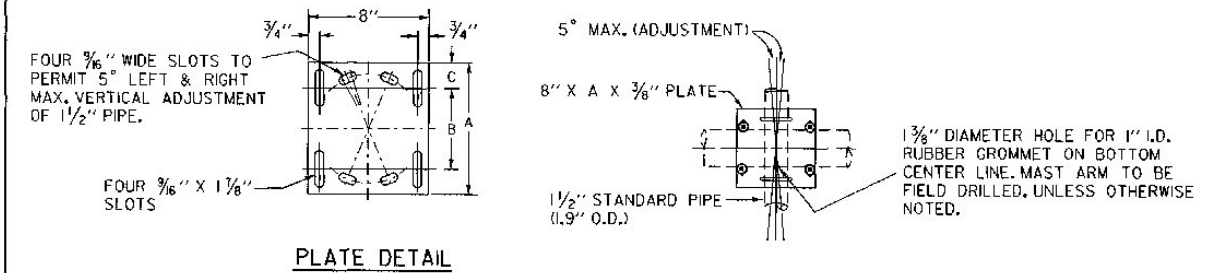
MAST ARM MOUNTING DETAILS FOR FREE SWINGING TRAFFIC SIGNALS



SIGNAL MOUNTING PLATE SCHEDULE				
ARM DIAMETER	A	B	C	
3.1" - 5.2"	8 3/4"	5 3/8"	1 1/8"	
5.2" - 7.9"	10 3/4"	7 3/8"	1 3/8"	
7.9" - 11.3"	14"	10 7/8"	1 3/8"	



CANTILEVER MOUNTED TRAFFIC SIGNALS (AND LUMINAIRES)



1. ALTERNATE METHODS FOR RIGID MOUNTING OF SIGNALS TO MAST ARMS MAY BE USED. SHOP DRAWINGS FOR THE ALTERNATE METHOD HARDWARE SHALL BE SUBMITTED TO THE TRAFFIC DESIGN SECTION VIA THE RESIDENT ENGINEER FOR APPROVAL PRIOR TO CONSTRUCTION.
2. ALL RIGIDLY MOUNTED TRAFFIC AND PEDESTRIAN SIGNALS SHALL BE PROVIDED WITH REINFORCEMENT PLATES AT THE ATTACHMENT POINTS.
3. ALL MATERIALS SHALL BE GALVANIZED STEEL.

MAST ARM MOUNTING DETAILS FOR FIXED MOUNT TRAFFIC SIGNALS PREFERRED METHOD

OTHER STDS. E - 171A , E - 171B REQUIRED

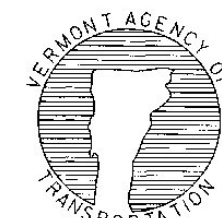
REVISIONS AND CORRECTIONS
 NOV. 17, 1993 - DATE OF ORIGINAL ISSUE

APPROVED

Gordon B. MacArthur
 DIRECTOR OF ENGINEERING

David D. Rose
 TRAFFIC AND SAFETY ENGINEER

TRAFFIC CONTROL SIGNALS
 CANTILEVER MOUNTING DETAILS



STANDARD
 E-171C