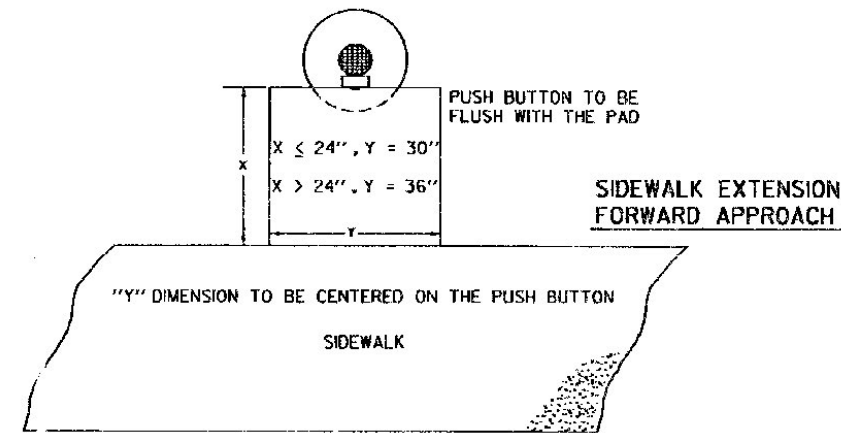
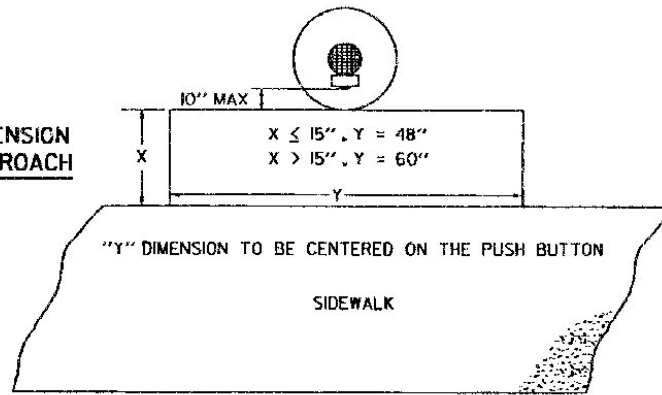


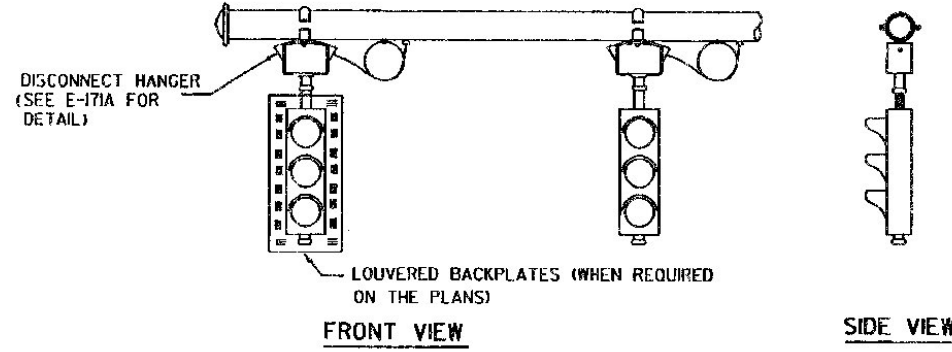
IF THE PEDESTRIAN PUSH BUTTON IS NOT LOCATED WITHIN 10' OF THE SIDEWALK, AN EXTENSION TO THE SIDEWALK MUST BE PROVIDED AS SHOWN BELOW. BUTTONS LOCATED ON THE SIDE OF CONTROLLER CABINETS MAY REQUIRE EXTENSION OF THE CONCRETE PAD, SHOWN ON STD E-171B, TO MEET THIS REQUIREMENT.

WHEN SIDEWALK EXTENSIONS ARE PROVIDED, A SUBBASE OF FINE GRADED CRUSHED GRAVEL SHALL BE PLACED AND ASPHALT IMPREGNATED FELT SHALL BE USED BETWEEN THE EXTENSION AND THE SIDEWALK AS SHOWN ON STD E-171B.

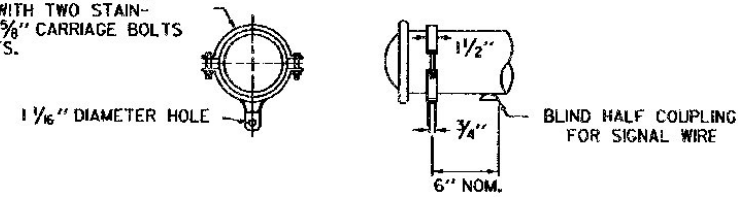
**SIDEWALK EXTENSION PARALLEL APPROACH**



**PEDESTRIAN PUSH BUTTON ACCESSIBILITY DETAIL**



CLAMP AND CLEVIS 1/4" STEEL GALVANIZED, WITH TWO STAINLESS STEEL 3/8" CARRIAGE BOLTS AND HEX NUTS.

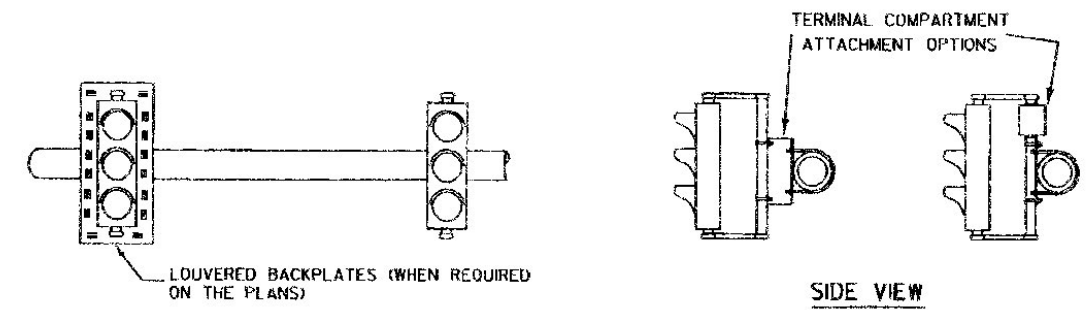


**MAST ARM MOUNTING DETAILS FOR FREE SWINGING TRAFFIC SIGNALS**

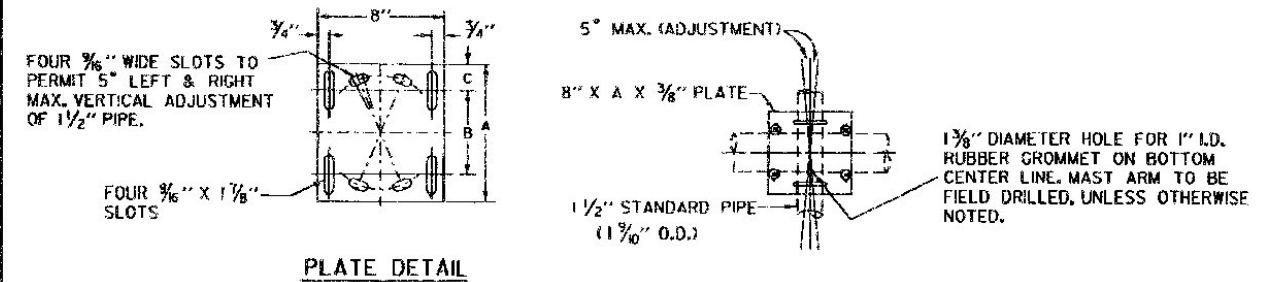
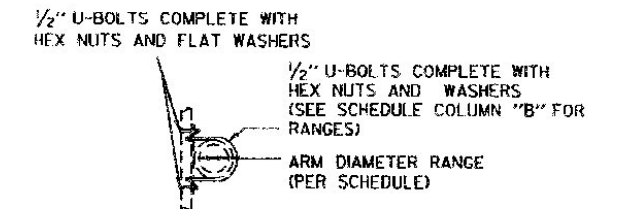
**CANTILEVER MOUNTED TRAFFIC SIGNALS (AND LUMINAIRES)**

MINIMUM SIGNAL CLEARANCE SHALL BE:  
16.5' FOR FREE SWINGING HEADS, OR  
17' FOR FIXED MOUNTED HEADS

SEE THE CANTILEVER / FOOTING DETAIL SHEET(S) FOR ADDITIONAL INFORMATION.



SIGNAL MOUNTING PLATE SCHEDULE			
ARM DIAMETER	A	B	C
3 1/10" - 5 1/10"	8 3/4"	5 3/8"	1 1/16"
5 1/10" - 7 1/10"	10 3/4"	7 3/8"	1 1/16"
7 1/10" - 11 1/10"	14"	10 3/8"	1 1/16"



1. ALTERNATE METHODS FOR RIGID MOUNTING OF SIGNALS TO MAST ARMS MAY BE USED. SHOP DRAWINGS FOR THE ALTERNATE METHOD HARDWARE SHALL BE SUBMITTED TO THE TRAFFIC DESIGN SECTION VIA THE RESIDENT ENGINEER FOR APPROVAL PRIOR TO CONSTRUCTION.
2. ALL RIGIDLY MOUNTED TRAFFIC AND PEDESTRIAN SIGNALS SHALL BE PROVIDED WITH REINFORCEMENT PLATES AT THE ATTACHMENT POINTS.
3. ALL NUTS, BOLTS AND WASHERS SHALL BE STAINLESS STEEL.
4. ALL OTHER MOUNTING BRACKET MATERIALS SHALL BE GALVANIZED STEEL.

**MAST ARM MOUNTING DETAILS FOR FIXED MOUNT TRAFFIC SIGNALS (PREFERRED METHOD)**

OTHER STDS. E - 170 , E - 171A , E - 171B REQUIRED

**REVISIONS AND CORRECTIONS**

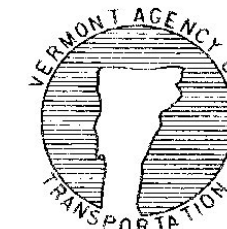
NOV. 17, 1993 - DATE OF ORIGINAL ISSUE  
AUG. 9, 1995 - ADDED PED. PUSH BUTTON ACCESSIBILITY DETAIL, REMOVED GENERAL CANTILEVER DETAIL, MINOR CORRECTIONS

**APPROVED**

*Jonathan D. MacArthur*  
DIRECTOR OF ENGINEERING

*David A. Ross*  
TRAFFIC AND SAFETY ENGINEER

**TRAFFIC CONTROL SIGNALS  
CANTILEVER MOUNTING DETAILS  
PED. PUSH BUTTON ACCESSIBILITY DETAIL**



**STANDARD  
E-171C**