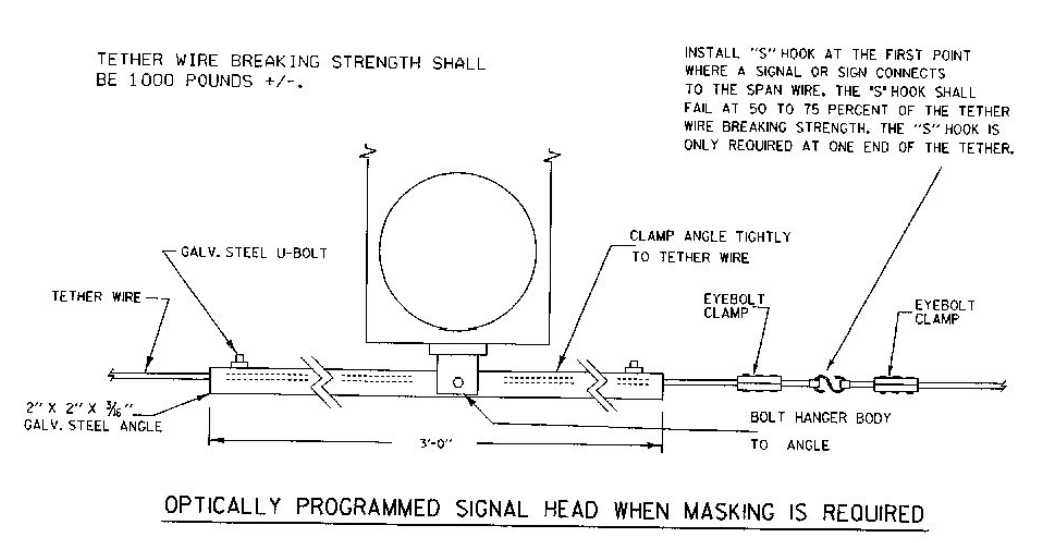
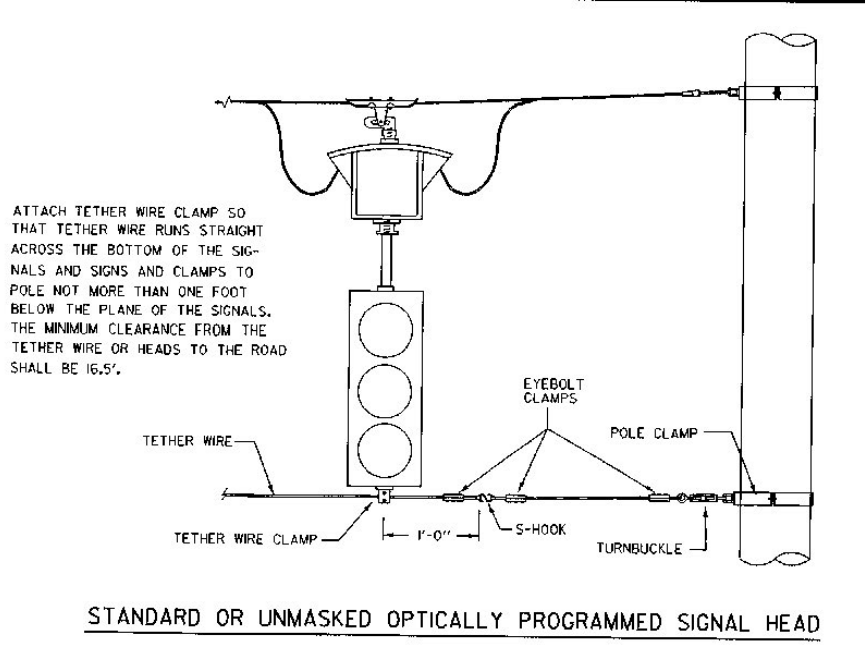


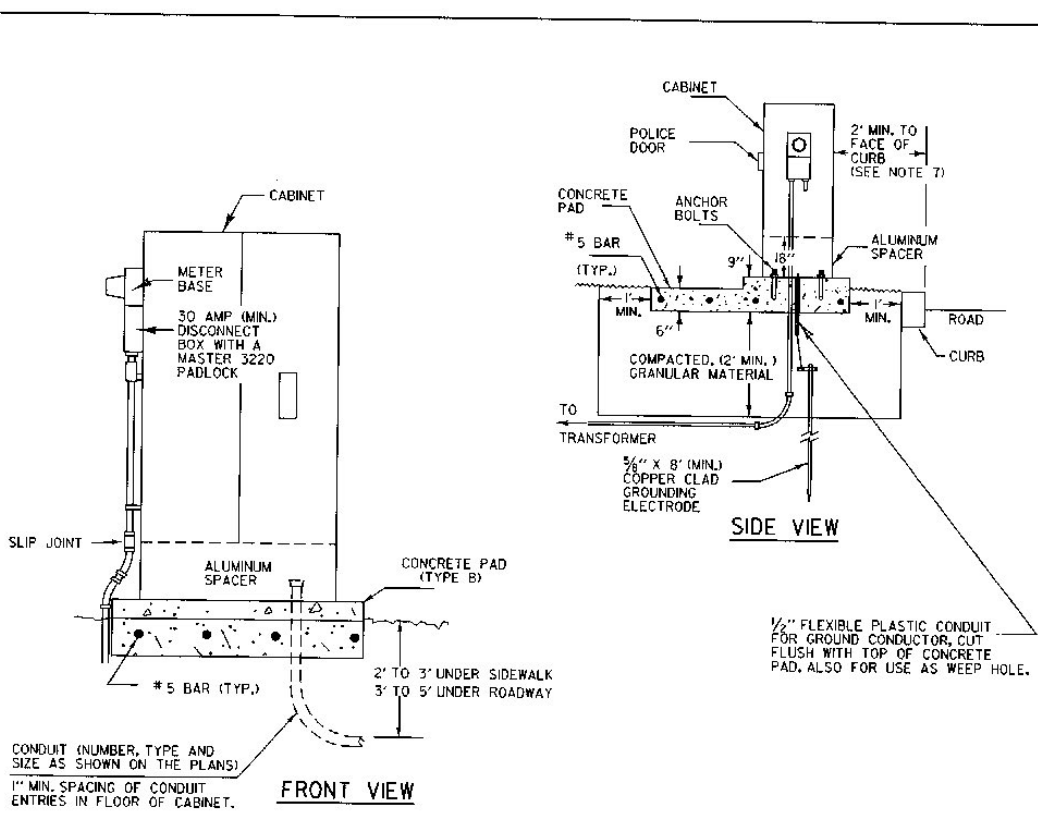
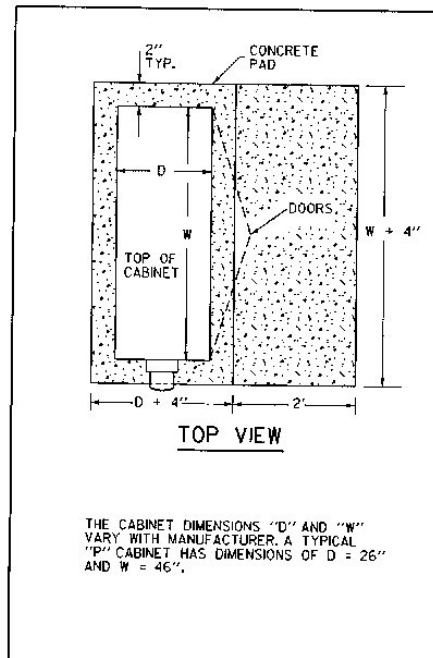
**CONCRETE PAD DETAIL FOR POLE MOUNTED CONTROLLER CABINET**



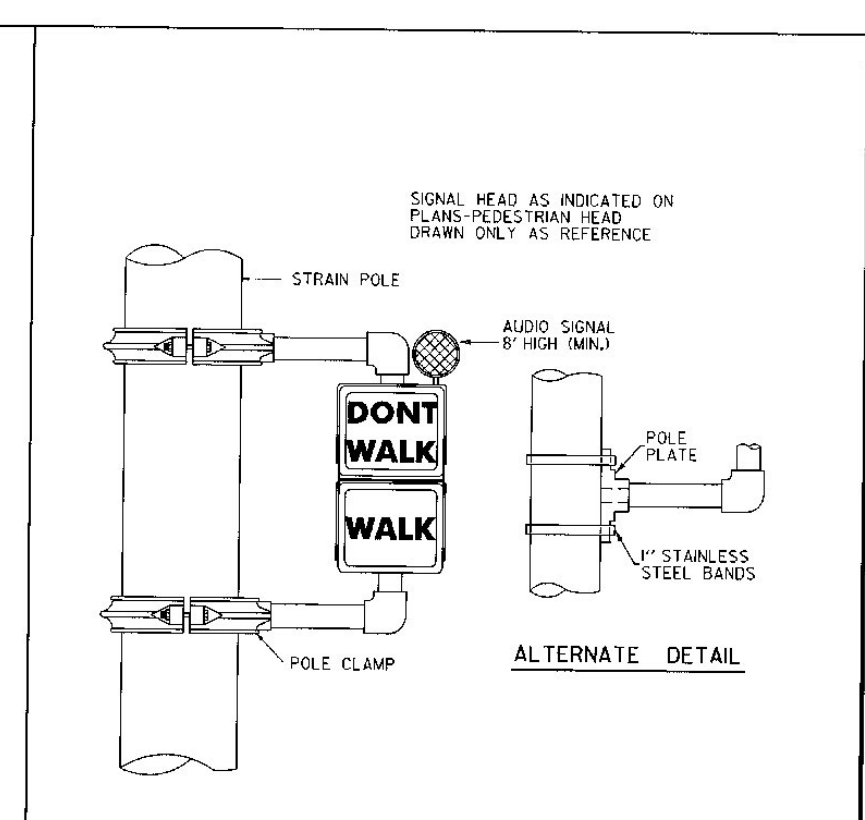
**TETHER WIRE ATTACHMENT DETAILS**



**STANDARD OR UNMASKED OPTICALLY PROGRAMMED SIGNAL HEAD**



**GROUND MOUNTED CONTROLLER CABINET**



**DETAIL FOR POLE MOUNTING SIGNAL HEAD**

- NOTES:**
- FOR GROUND MOUNTED INSTALLATIONS, THE METER SHOULD BE INSTALLED AS SHOWN ON THE PLANS. THE PREFERRED METER LOCATION IS ON A SEPARATE POLE OR STANCHION. HOWEVER, IF LIMITING CONDITIONS EXIST, THE METER MAY BE INSTALLED ON THE CONTROLLER CABINET ON THE SIDE AWAY FROM APPROACHING TRAFFIC.
  - FOR GROUND MOUNTED INSTALLATIONS, THE NUMBER 5 BARS SHALL BE SPACED 16" CENTER TO CENTER WITH A MINIMUM OF 3" COVER TO THE GROUND. THEY SHALL RUN BOTH NORMAL AND TRANSVERSE IN THE CONCRETE PAD.
  - THE CONCRETE PAD SURFACE SHALL HAVE A BRUSHED FINISH.

- THE GROUND MOUNTED CONTROLLER CABINET ANCHOR BOLT DIMENSIONS SHALL BE SUPPLIED BY THE CABINET MANUFACTURER. THESE BOLTS SHALL BE GALVANIZED OR STAINLESS STEEL.
- FOR GROUND MOUNTED INSTALLATIONS, THE ALUMINUM SPACER MAY BE DELETED IN URBAN AREAS, IF SO NOTED ON THE PLANS.
- AN ASPHALT IMPREGNATED FELT PAD SHALL BE USED BETWEEN THE CONTROLLER PAD AND ADJACENT SIDEWALK, WHERE APPLICABLE.
- THE MINIMUM CLEAR ZONE IN LOW SPEED URBAN AREAS IS 2'. IN OTHER CASES, THE MINIMUM IS EQUAL TO THE CLEAR ZONE AS DEFINED IN AASHTO'S ROADSIDE DESIGN GUIDE. SEE GROUND MOUNT (SIDE VIEW) DETAIL.

**REVISIONS AND CORRECTIONS**

JUNE 21, 1989 - DATE OF ORIGINAL ISSUE  
MAY 14, 1990 - FHWA COMMENTS  
NOV. 17, 1993 - FHWA COMMENTS, NOTE REVISIONS, MOVED CANTILEVER DETAILS TO NEW E-171C AND ADDED TETHER WIRE DETAIL

**APPROVED**

*Gregory D. MacArthur*  
DIRECTOR OF ENGINEERING

*David A. Rose*  
TRAFFIC AND SAFETY ENGINEER

**TRAFFIC CONTROL SIGNALS  
MISC. DETAILS**

**OTHER STDS. REQUIRED** E - 171A, E - 175

**STANDARD  
E-171B**