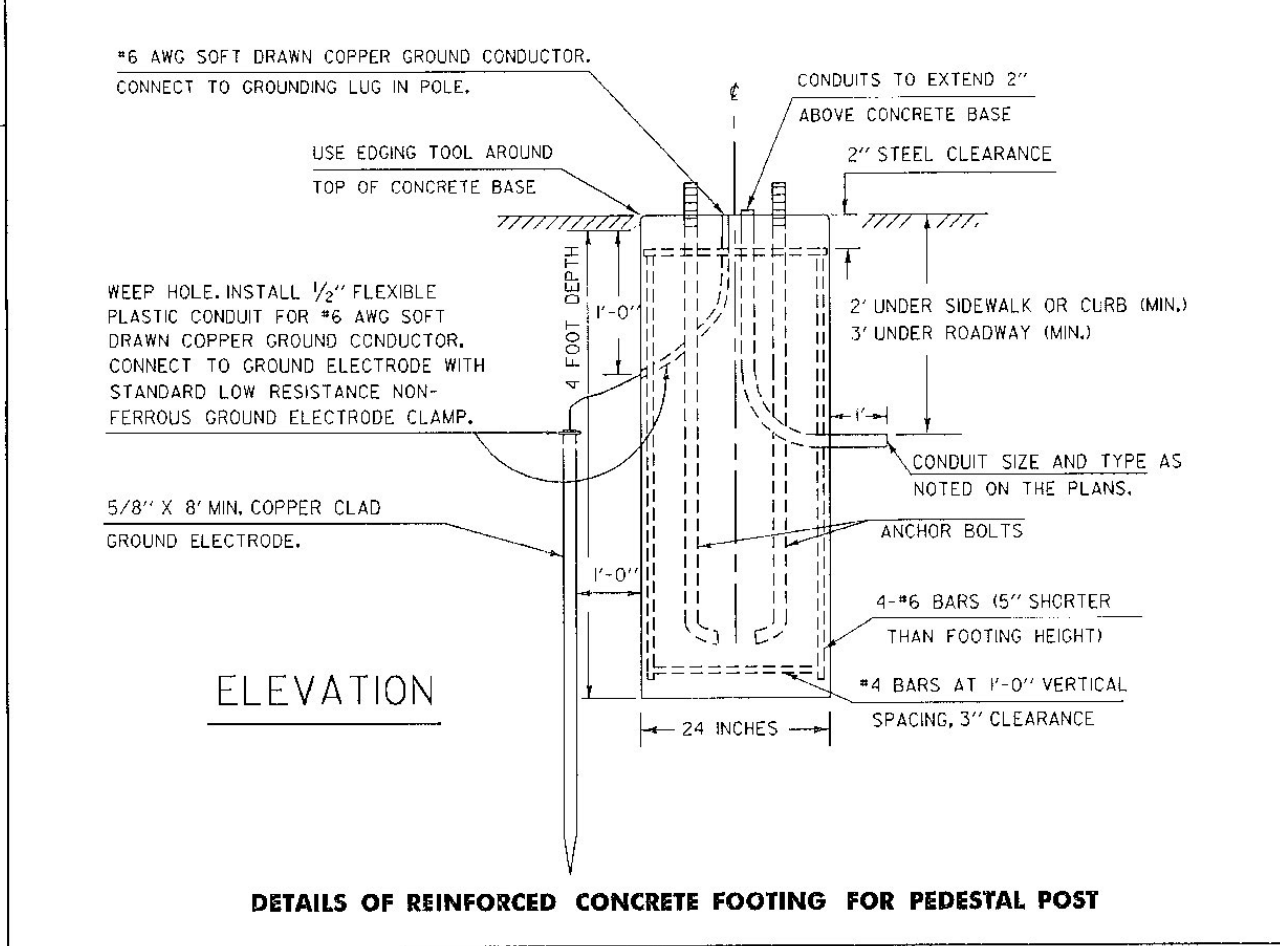
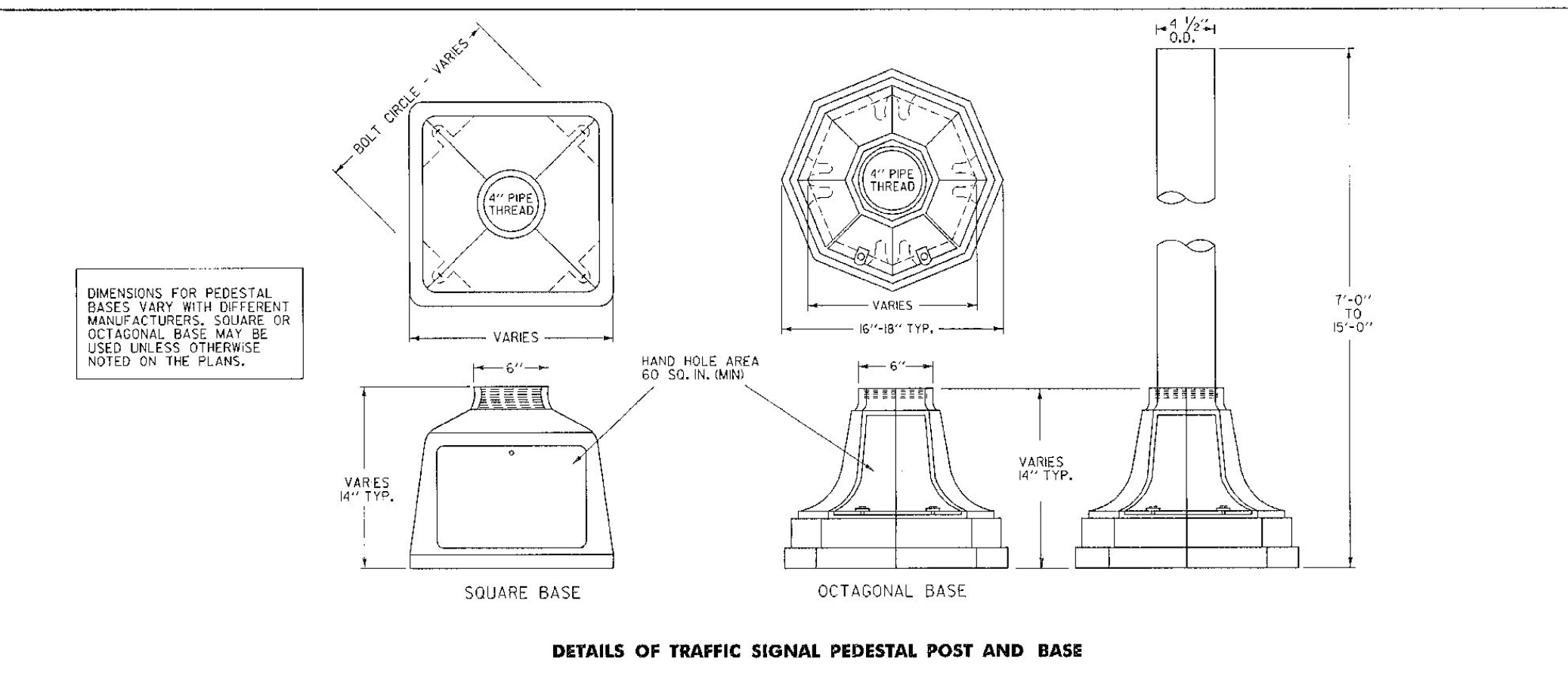
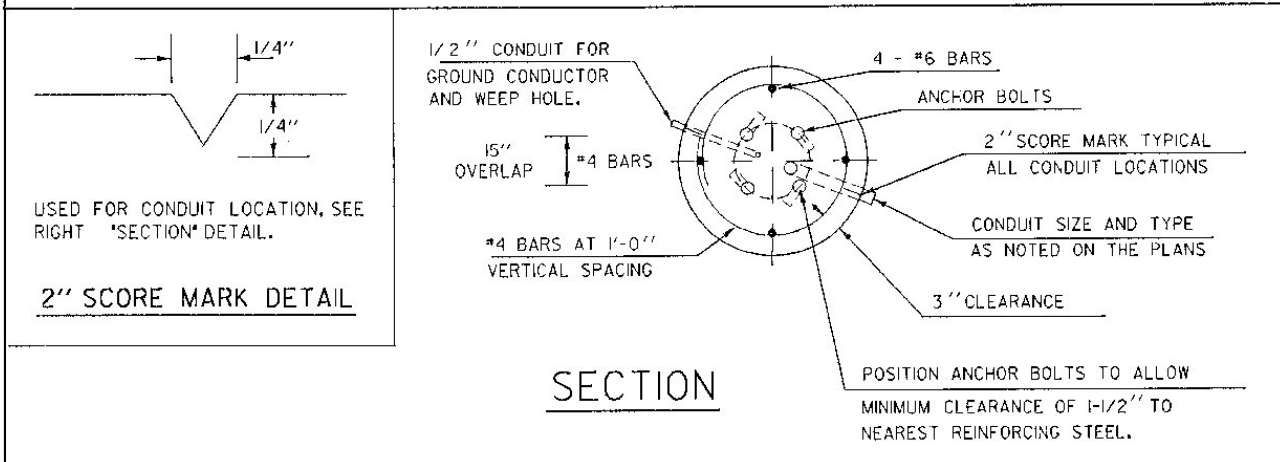


- NOTES**
- REFER TO STANDARD E-171A FOR TRAFFIC SIGNAL GENERAL NOTES
 - STEEL PEDESTAL POSTS AND BASES SHALL BE PAINTED FEDERAL YELLOW, AFTER GALVANIZATION, UNLESS OTHERWISE NOTED IN THE PLANS. ALUMINUM POSTS AND BASES SHALL HAVE A NATURAL ALUMINUM FINISH.
 - ALL PEDESTAL POLES WHICH ARE PROVIDED WITH A BREAKAWAY FEATURE SHALL CONFORM TO THE REQUIREMENTS OF THE AASHTO 1985 STANDARD SPECIFICATIONS FOR STRUCTURAL SUPPORTS FOR HIGHWAY SIGNS, LUMINAIRES, AND TRAFFIC SIGNALS, SECTION 7 AND SUBSEQUENT REVISIONS.



OTHER STDS. E - 140, E - 171A REQUIRED

REVISIONS AND CORRECTIONS

JUNE 21, 1989 - DATE OF ORIGINAL ISSUE
MAY 14, 1990 - FHWA COMMENTS
NOV. 17, 1993 - MISC. COMMENTS

APPROVED

Carolyn S. MacArthur
DIRECTOR OF ENGINEERING

David O. Ross
TRAFFIC AND SAFETY ENGINEER

TRAFFIC CONTROL SIGNALS PEDESTAL POST MOUNTED

**STANDARD
E-170**

VERMONT AGENCY OF TRANSPORTATION