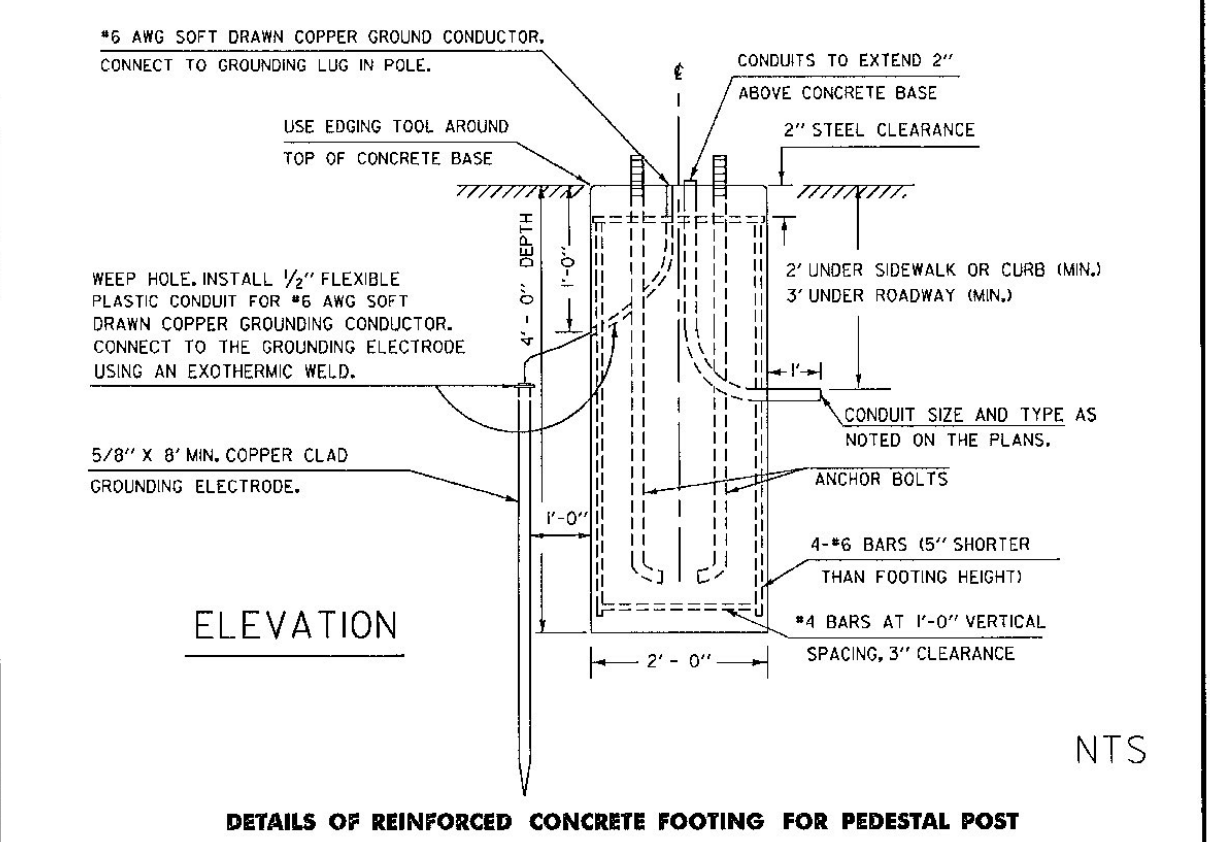
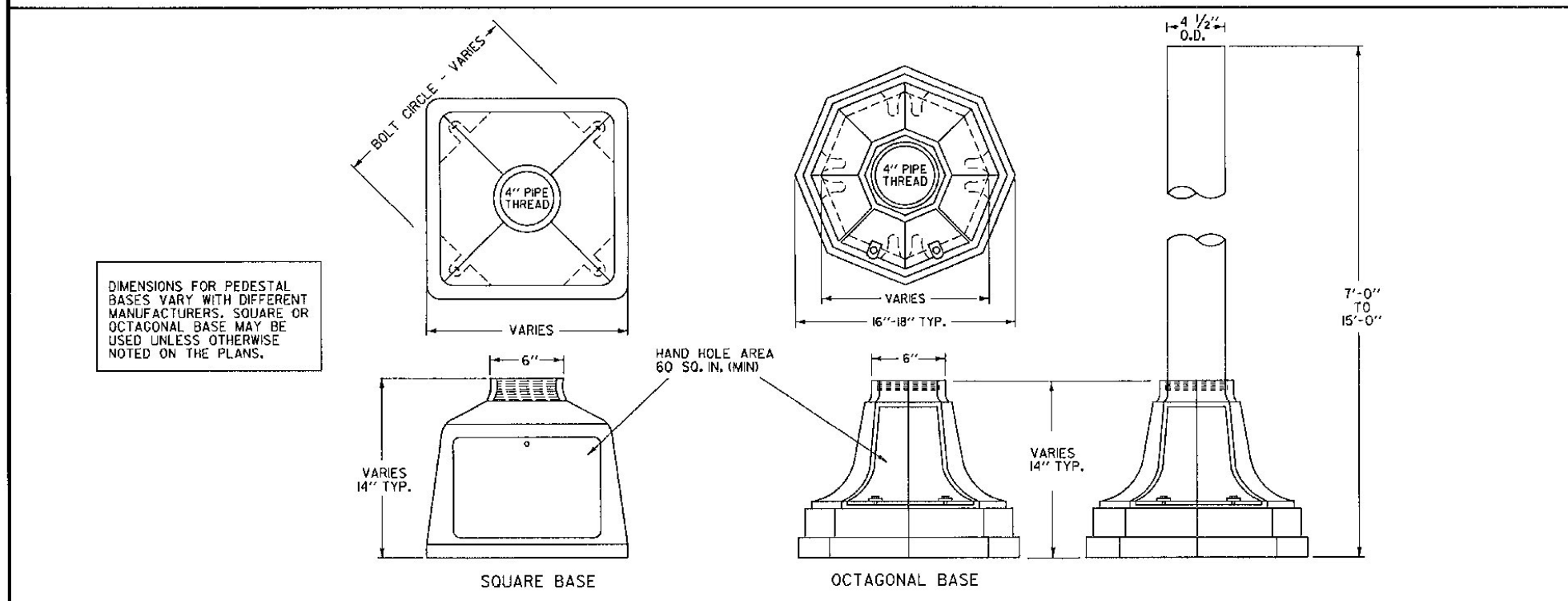
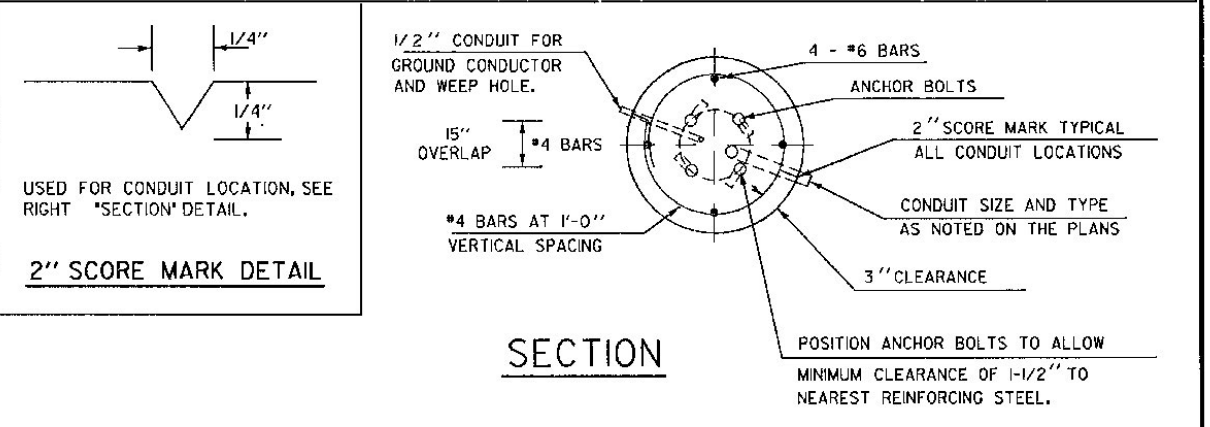


- NOTES**
- REFER TO STANDARD E-171A FOR TRAFFIC SIGNAL GENERAL NOTES.
  - STEEL PEDESTAL POSTS AND BASES SHALL BE PAINTED FEDERAL YELLOW, AFTER GALVANIZATION. UNLESS OTHERWISE NOTED IN THE PLANS, ALUMINUM POSTS AND BASES SHALL HAVE A NATURAL ALUMINUM FINISH.
  - ALL PEDESTAL POLES WHICH ARE PROVIDED WITH A BREAKAWAY FEATURE SHALL CONFORM TO THE REQUIREMENTS OF THE AASHTO 1985 STANDARD SPECIFICATIONS FOR STRUCTURAL SUPPORTS FOR HIGHWAY SIGNS, LUMINAIRES, AND TRAFFIC SIGNALS, SECTION 7 AND SUBSEQUENT REVISIONS.
  - REFER TO STD E-171C FOR PEDESTRIAN PUSH BUTTON ACCESSIBILITY DETAILS.



APPROVED FOR THIS PROJECT AND/OR DESIGN IMPLEMENTATION. FHWA FINAL APPROVAL PENDING.

**DETAILS OF TRAFFIC SIGNAL PEDESTAL POST AND BASE**

**DETAILS OF REINFORCED CONCRETE FOOTING FOR PEDESTAL POST**

**REVISIONS AND CORRECTIONS**

JUNE 21, 1989 - DATE OF ORIGINAL ISSUE  
MAY 14, 1990 - FHWA COMMENTS  
NOV. 17, 1993 - MISC. COMMENTS  
AUG. 9, 1995 - CORRECTED BUTTON HEIGHT, ADDED NOTE 4, REVISED BASE GROUNDING & OTHER STDS REQUIRED.

**APPROVED**

*Stephen D. MacArthur*  
DIRECTOR OF ENGINEERING

*David A. Ross*  
TRAFFIC AND SAFETY ENGINEER

# TRAFFIC CONTROL SIGNALS PEDESTAL POST MOUNTED

OTHER STDS. E - 140, E - 171A, E-171B, E-171C  
REQUIRED



# STANDARD E-170