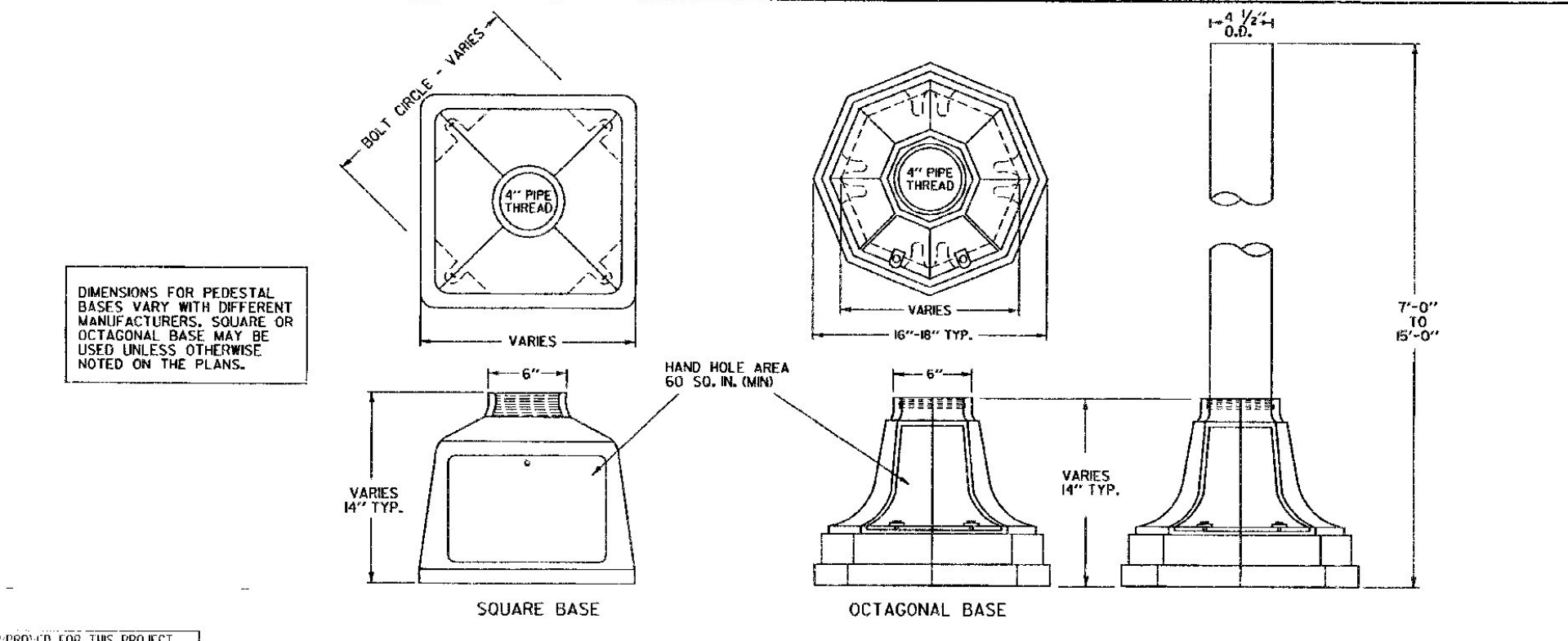
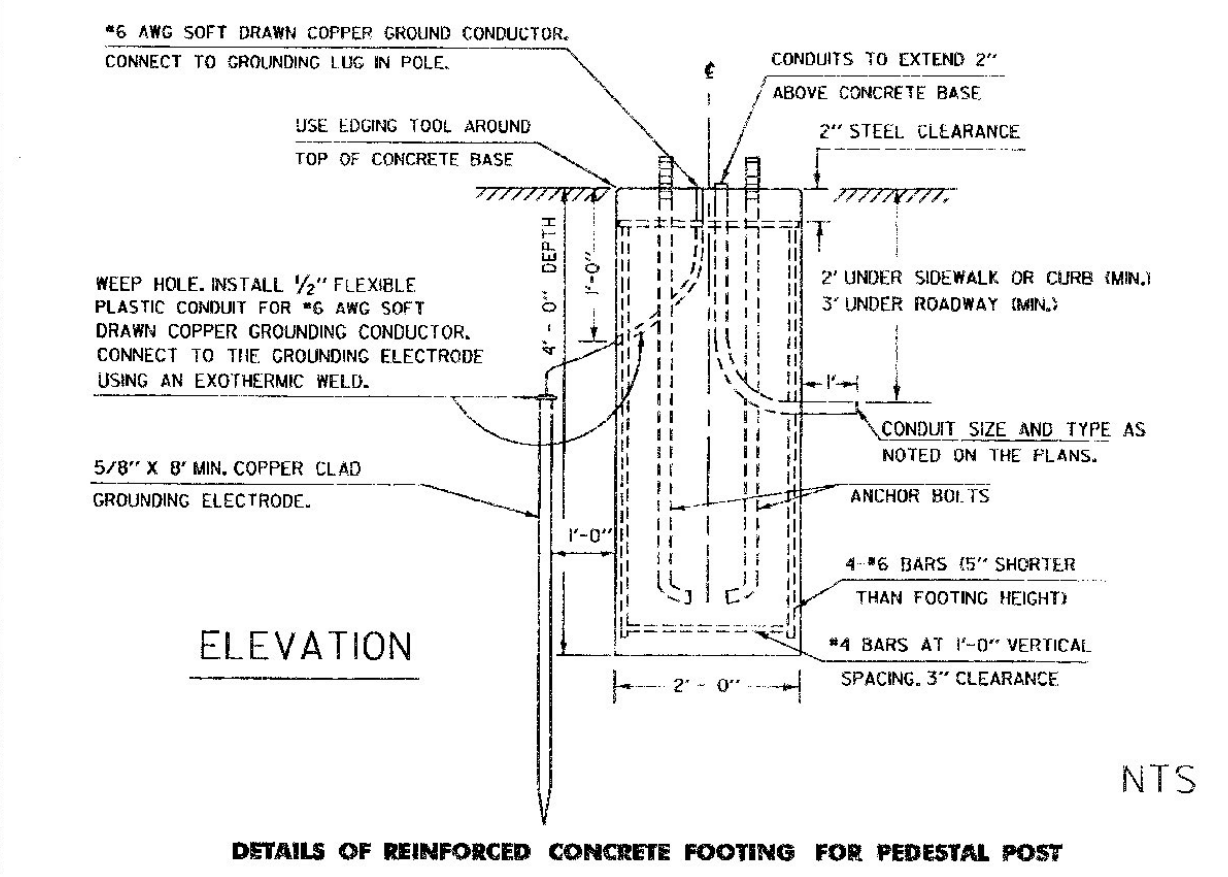
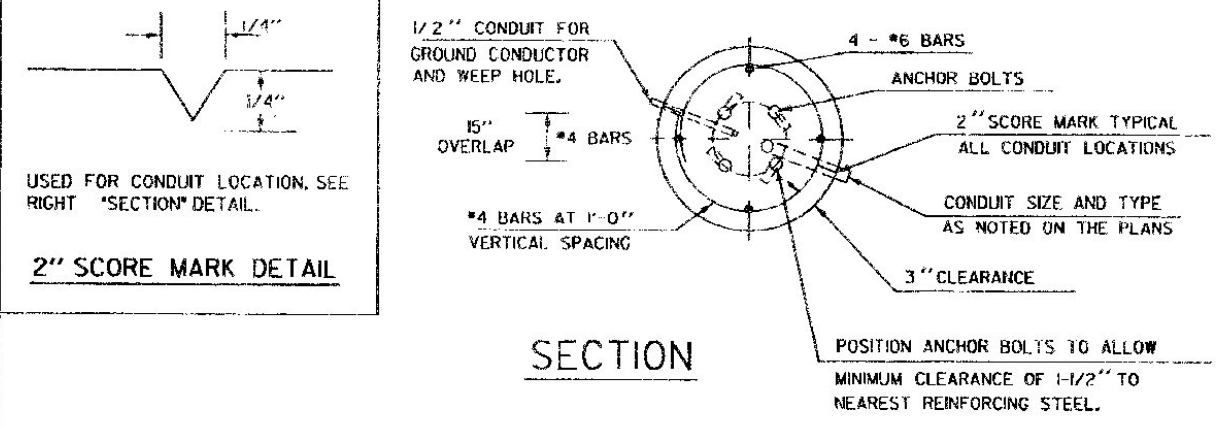


- NOTES**
1. REFER TO STANDARD E-171A FOR TRAFFIC SIGNAL GENERAL NOTES.
 2. STEEL PEDESTAL POSTS AND BASES SHALL BE PAINTED FEDERAL YELLOW, AFTER GALVANIZATION, UNLESS OTHERWISE NOTED IN THE PLANS. ALUMINUM POSTS AND BASES SHALL HAVE A NATURAL ALUMINUM FINISH.
 3. ALL PEDESTAL POLES WHICH ARE PROVIDED WITH A BREAKAWAY FEATURE SHALL CONFORM TO THE REQUIREMENTS OF THE AASHTO 1985 STANDARD SPECIFICATIONS FOR STRUCTURAL SUPPORTS FOR HIGHWAY SIGNS, LUMINAIRES, AND TRAFFIC SIGNALS, SECTION 7 AND SUBSEQUENT REVISIONS.
 4. REFER TO STD E-171C FOR PEDESTRIAN PUSH BUTTON ACCESSIBILITY DETAILS.



APPROVED FOR THIS PROJECT
A 20/01 DESIGN IMPLEMENTATION.
FHWA FINAL APPROVAL PENDING.

REVISIONS AND CORRECTIONS

JUNE 21, 1989 - DATE OF ORIGINAL ISSUE
MAY 14, 1990 - FHWA COMMENTS
NOV. 17, 1993 - MISC. COMMENTS
AUG. 9, 1995 - CORRECTED BUTTON HEIGHT, ADDED NOTE 4, REVISED BASE GROUNDING & OTHER STDS REQUIRED.

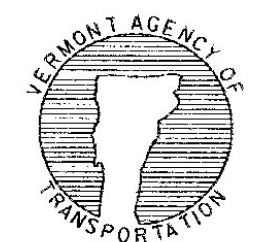
APPROVED

Stephen D. MacArthur
DIRECTOR OF ENGINEERING

David A. Ross
TRAFFIC AND SAFETY ENGINEER

TRAFFIC CONTROL SIGNALS PEDESTAL POST MOUNTED

OTHER STDS. REQUIRED E - 140, E - 171A, E-171B, E-171C



STANDARD E-170