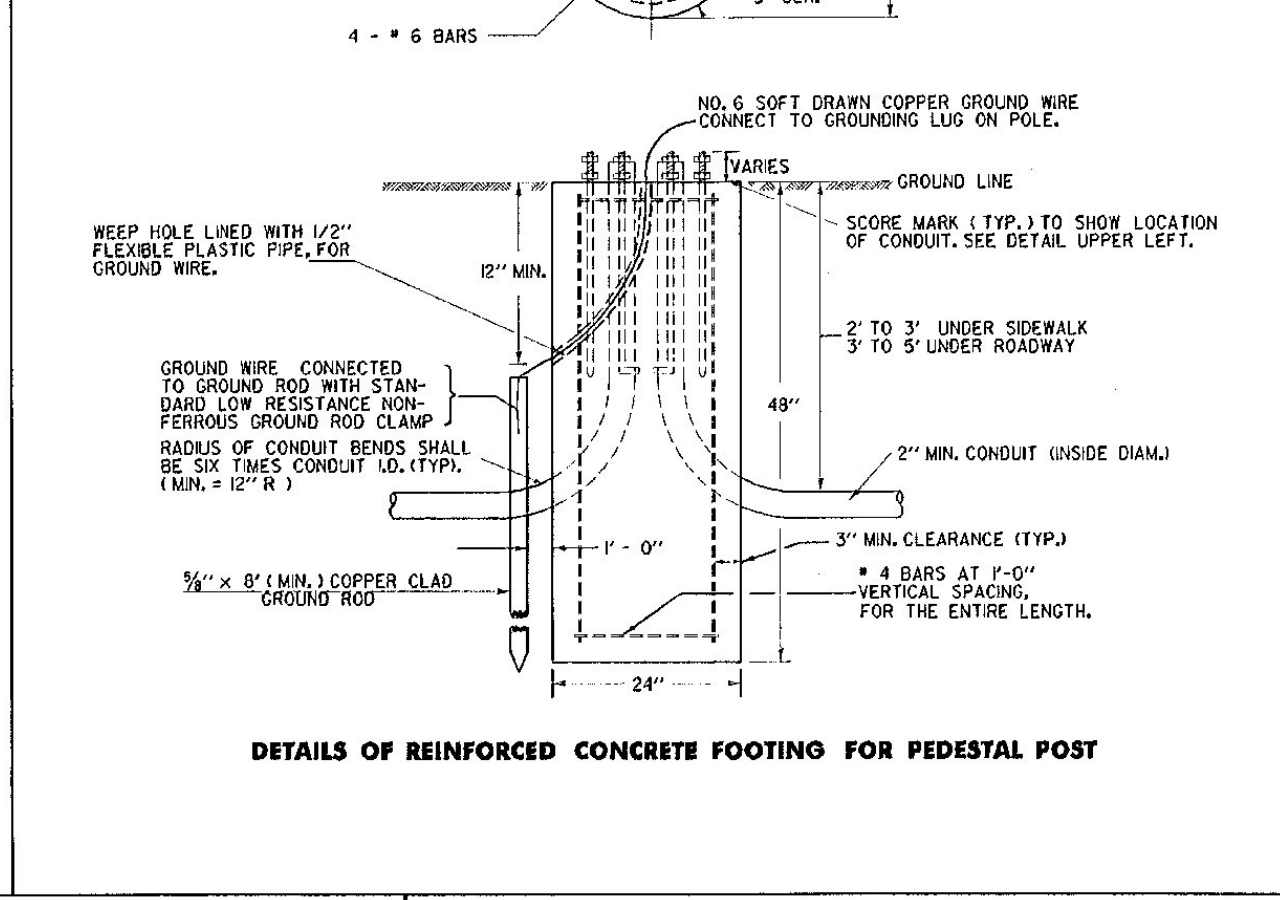
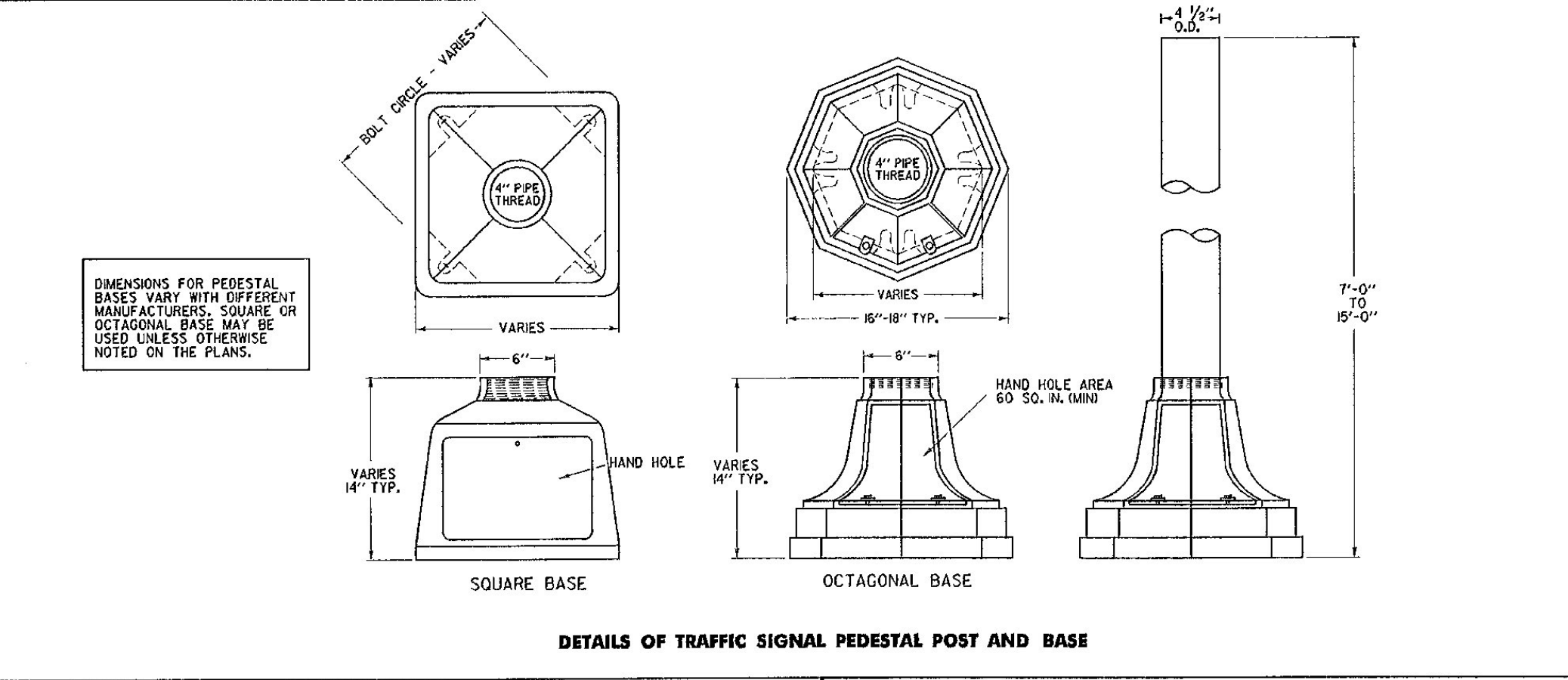
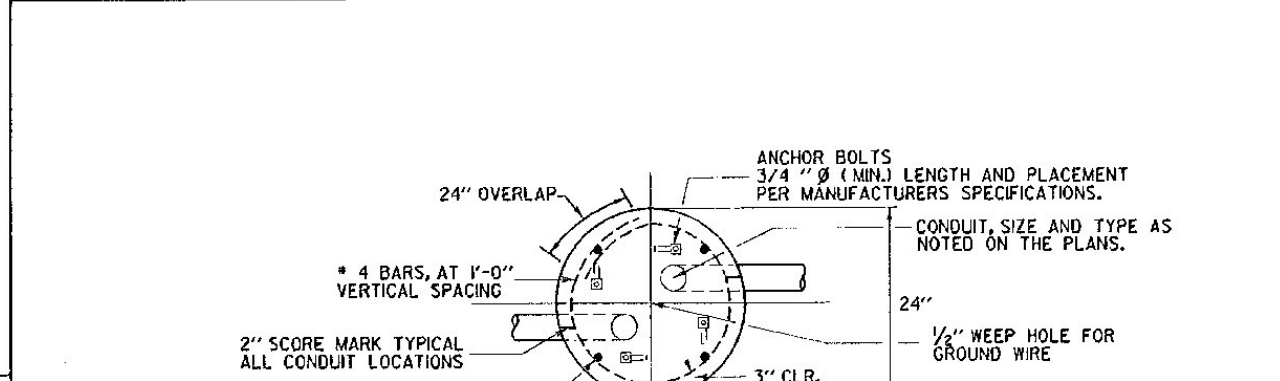
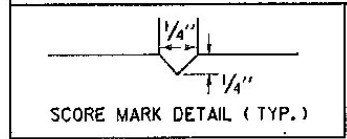


- ### NOTES
- REFER TO STANDARD E-171A FOR TRAFFIC SIGNAL GENERAL NOTES
 - STEEL PEDESTAL POSTS AND BASES SHALL BE PAINTED FEDERAL YELLOW, AFTER GALVANIZATION. ALUMINUM POSTS AND BASES SHALL HAVE A NATURAL ALUMINUM FINISH.
 - ALL POST TOP MOUNTED SIGNALS (PEDESTRIAN AND TRAFFIC) SHALL BE HEAVY DUTY ALUMINUM.
 - REFER TO THE "STANDARD SPECIFICATIONS FOR CONSTRUCTION" FOR ANCHOR BOLT MATERIAL SPECIFICATIONS



REVISIONS AND CORRECTIONS
MAY 14, 1990 - FHWA COMMENTS

APPROVED _____
JUNE 21, 1989
DATE

CHIEF ENGINEER
Stephen B. MacArthur
DIRECTOR OF PLANNING
AND PRE-CONSTRUCTION
David A. Rose
TRAFFIC AND SAFETY ENGINEER

TRAFFIC CONTROL SIGNALS PEDESTAL POST MOUNTED

STANDARD E-170