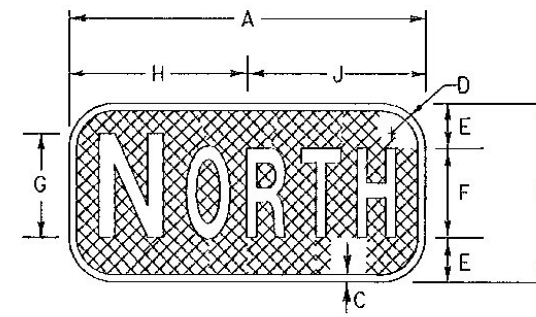


TYPICAL SIGN TEXTS



CARDINAL DIRECTION MARKER

SIGN	DIMENSIONS (INCHES)													
	A	B	C	D	E	F	G	H	J	H	J	H	J	
MIN. & STD.	24	12	1/2	1 1/2	3	6C	7C	10 1/4	10 1/4	10 1/4	9 3/8	7 3/8	8 3/8	8 3/8
SPECIAL	30	15	1/2	1 1/2	3 1/2	8C	9C	12 3/8	12 3/8	12 3/8	12 3/8	10 3/8	11 3/8	11 3/8

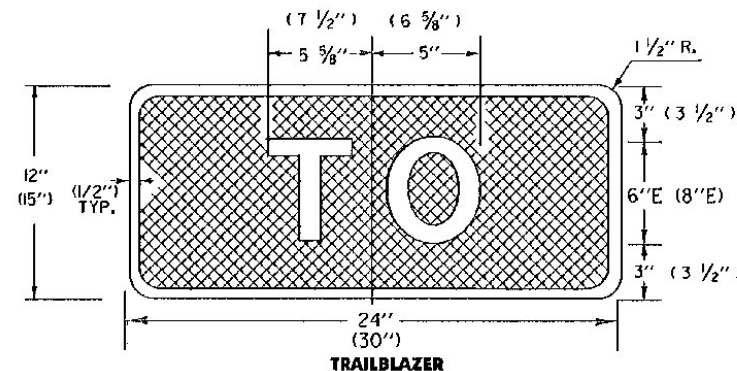
\* OPTICALLY SPACE NUMERALS ABOUT VERTICAL CENTERLINE

INTERSTATE SHIELD FOR INDEPENDENT AND GUIDE SIGN USE

SIGN	DIMENSIONS (INCHES)												
	A	B	C	D	E	F	G	H	J	K	L	M	
1-2-DIGITS	24	24	1/2	6 1/2	12 0	9 1/2	5	15	15	2	2 1/2 C	7 3/8	
1-2-DIGITS	36	36	3/4	9 3/4	18 0	14 1/4	7 1/2	22 1/2	22 1/2	3	3 3/4 C	11 3/8	
3-DIGITS	30	24	1/2	6 1/2	12 0	9 1/2	5	24	17	2	2 1/2 C	7 3/8	
3-DIGITS	45	36	3/4	9 3/4	18 0	14 1/4	7 1/2	36	25 1/2	3	3 3/4 C	11 3/8	

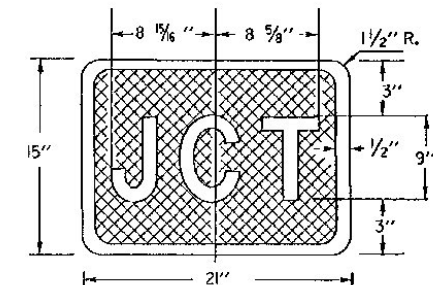
**COLORS**

LEGEND AND BORDERS  
 TOP - WHITE (REFL)  
 BOTTOM (CROSS-HATCHED) - RED (REFL)  
 - BLUE (REFL)



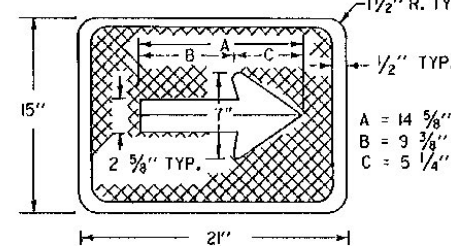
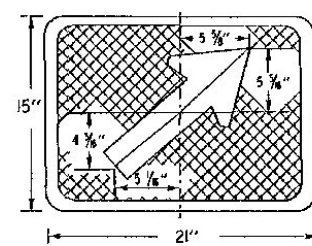
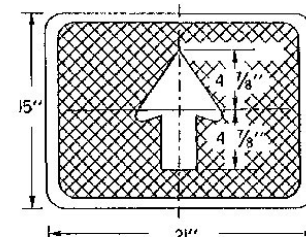
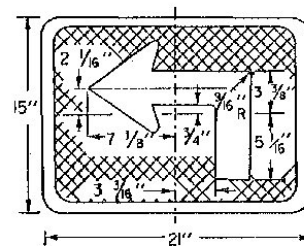
TRAILBLAZER

NUMBER IN PARENTHESES INDICATE DIMENSIONS FOR FREEWAY - EXPRESSWAY SIZE

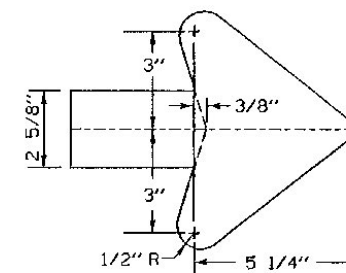


JUNCTION MARKER

INCREASE SPACING 25%



DIRECTIONAL ARROWS OR ADVANCE TURN ARROWS



ARROW DETAILS

**MATERIALS**

THE SIGN BASE MATERIAL MAY BE ANY OF THE FOLLOWING MINIMUM THICKNESS NOTED:

FLAT SHEET ALUMINUM

LESS THAN 24" X 24"	0.060"
WHEN USED ON GUIDE SIGNS	0.060"
24" X 24", 30" X 24"	0.080"
36" X 36", 45" X 36"	0.100"

GALVANIZED FLAT SHEET STEEL

LESS THAN 24" X 24"	18 GAGE
WHEN USED ON GUIDE SIGNS	18 GAGE
24" X 24", 30" X 24"	16 GAGE
36" X 36", 45" X 36"	14 GAGE

THE REFLECTIVE MATERIAL SHALL BE ENCAPSULATED LENS, WHITE OR SILVER REFLECTIVE SHEETING APPLIED TO THE ENTIRE BACKGROUND OF THE MARKER. THE TEXTS OF THE INTERSTATE ROUTE MARKERS AND THE AUXILIARY, EXCEPT TRAILBLAZER AUXILIARIES, SHALL BE REVERSE SCREENED.

**COLORS**

THE INTERSTATE ROUTE MARKER SHALL HAVE A REFLECTORIZED WHITE OR SILVER TEXT AND BORDER ON A REFLECTORIZED RED AND BLUE BACKGROUND. AUXILIARY MARKERS USED WITH INTERSTATE SHIELDS SHALL HAVE A REFLECTORIZED WHITE OR SILVER TEXT AND BORDER ON A REFLECTORIZED BLUE BACKGROUND.

THE RED AND BLUE SHALL CONFORM WITH THE STANDARD COLORS ADOPTED BY THE AMERICAN ASSOCIATION OF STATE HIGHWAY AND TRANSPORTATION OFFICIALS AND APPROVED BY THE U.S. DEPARTMENT OF TRANSPORTATION, FEDERAL HIGHWAY ADMINISTRATION.

**LETTERING**

LETTERS AND DIGITS SHALL CONFORM WITH THE "STANDARD ALPHABETS FOR HIGHWAY SIGNS AND PAVEMENT MARKINGS" ADOPTED BY THE U.S. DEPARTMENT OF TRANSPORTATION AND FEDERAL HIGHWAY ADMINISTRATION.

**SPECIFICATIONS**

INTERSTATE ROUTE MARKERS AND AUXILIARY ROUTE MARKERS SHALL MEET THE STANDARD STATE SPECIFICATIONS FOR "TRAFFIC SIGNS".

**DESIGNS**

THE DESIGNS OF INTERSTATE ROUTE MARKERS AND AUXILIARY MARKERS SHALL CONFORM WITH THE REQUIREMENTS SET FORTH IN THE "MANUAL ON UNIFORM TRAFFIC CONTROL DEVICES" ADOPTED BY THE U.S. DEPARTMENT OF TRANSPORTATION AND FEDERAL HIGHWAY ADMINISTRATION.

REVISIONS AND CORRECTIONS

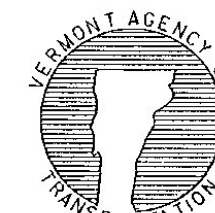
- JAN. 23, - 1989 - ADDED ENCAPSULATED SHEETING, - 30" X 15" SIGNS
- OCT. 21, 1992 - NEW CARDINAL SIGN & DIMENSION, ADDED ARROW DETAIL, AND REVISED TITLE BLOCK
- JAN 13 1993 - REVISED CARDINAL DIRECTION MARKER BOX

APPROVED: SEPT. 10, 1987  
DATE

*Edward R. MacCallum*  
DIRECTOR OF ENGINEERING

*David A. Reed*  
TRAFFIC AND SAFETY ENGINEER

INTERSTATE ROUTE MARKER  
SIGN DETAILS



STANDARD  
E-135