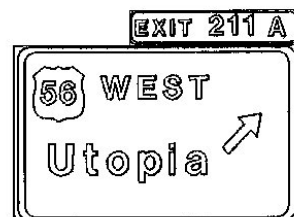


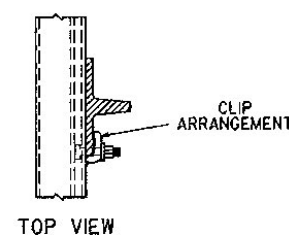
INDIVIDUAL LETTERS, DIGITS, SYMBOLS, AND BORDERS FOR THE SIGN SHALL BE SHAPED FROM 0.032 INCH SHEET ALUMINUM CONFORMING TO THE REQUIREMENTS OF ASTM B 209, ALLOY 3003-H12. THE CHARACTERS SHALL BE REFLECTORIZED, IN ACCORDANCE WITH THE RECOMMENDATIONS OF THE SHEETING MANUFACTURER, WITH REFLECTIVE SHEETING CONFORMING TO THE REQUIREMENTS OF SUBSECTION 750.08, ENCLOSED LENS SILVER-WHITE. LEGEND AND BORDER TO BE ATTACHED TO THE SIGN FACE WITH $\frac{1}{8}$ " RIVETS.

POST CLIP ALUMINUM ASTM B-108, ALLOY 356-T6 (N-517) WITH $\frac{1}{8}$ " x 2" SQUARE HEAD STAINLESS STEEL BOLT B-453 WITH $\frac{1}{4}$ " O.D. x $\frac{3}{16}$ " I.D. x .091 STAINLESS STEEL LOCKNUT (N-361), $\frac{3}{8}$ " x 1 $\frac{1}{4}$ " SQUARE HEAD STAINLESS STEEL BOLT (B-296) AS ALTERNATE.

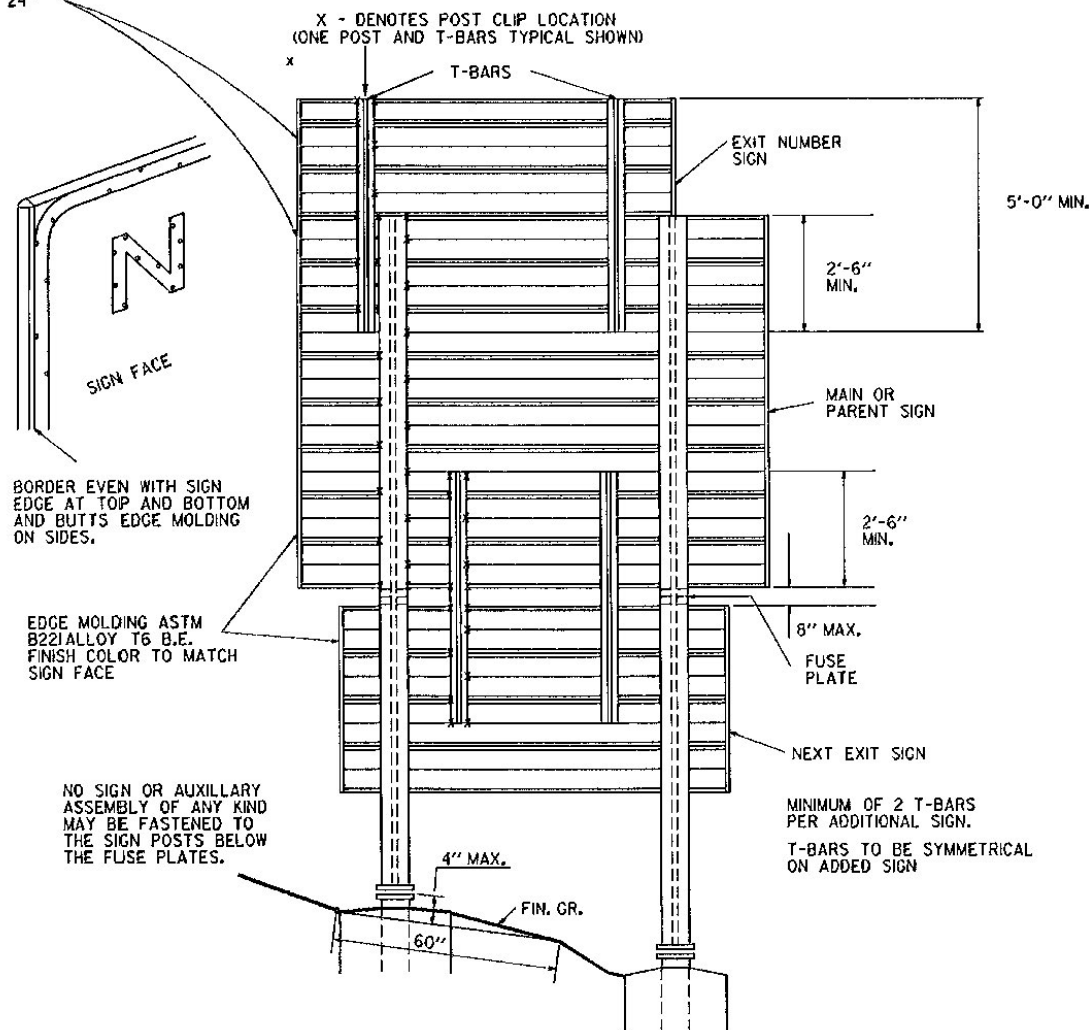
12" x 6" EXTRUDED ALUMINUM SIGN PANELS 6063-T6, 6" PANEL PLACED ON TOP WHEN REQUIRED. PANELS BOLTED TOGETHER ON 24" CENTERS WITH $\frac{1}{2}$ " x 1" STAINLESS STEEL HEX HEAD BOLT, (B-294) AND A $\frac{3}{8}$ " STAINLESS STEEL HEX NUT (N-326).



WHEN USED, THE SERVICE SIGNS SHALL APPEAR IN THE SAME SEQUENCE AS SHOWN ABOVE. THE PARENT SIGN SHOWN IS ONLY AN EXAMPLE. THE SIGNS SHALL BE INSTALLED ON THE SIGN SHOWN ON THE PLANS. THE SERVICE SIGNS SHALL BE MOUNTED TO THE PARENT SIGN WITH TEE BARS AND EXTRUDED ALUMINUM RIBS. OTHER METHODS OF INSTALLATION MAY BE SUBMITTED TO THE TRAFFIC DESIGN SECTION FOR APPROVAL. IN NO CASE SHALL ANY SUPPORT BE ATTACHED TO THE W-SHAPED STEEL SIGN SUPPORT BELOW THE FUSE PLATE.

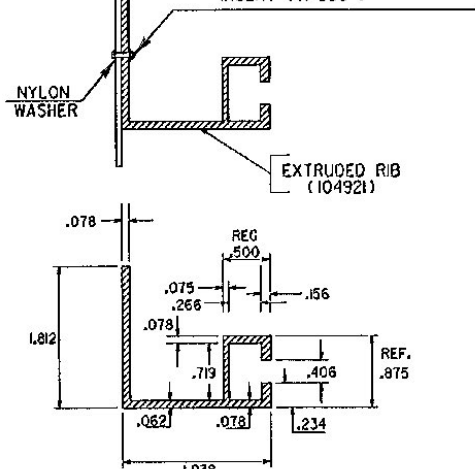


SIGN MOUNTING DETAIL



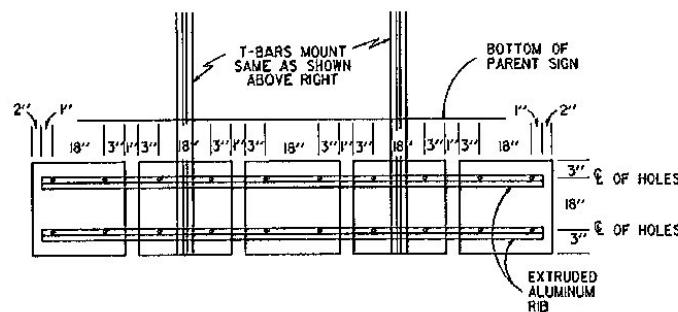
TYPICAL SIGN INSTALLATION ON W-SHAPED STEEL POSTS WITH T-BAR EXTENSIONS

SIGN FACE
 $\frac{3}{16}$ " x 1 $\frac{1}{4}$ " S.S. HEX. HD. SLOTTED MACH. SCREW (B-182)
 $\frac{1}{8}$ " S.S. FLATWASHER (W-438)
 $\frac{3}{16}$ " FIBER FLATWASHER (W-385)
 $\frac{3}{16}$ " S.S. HEX LOCK WITH NYLON INSERT (N-350)

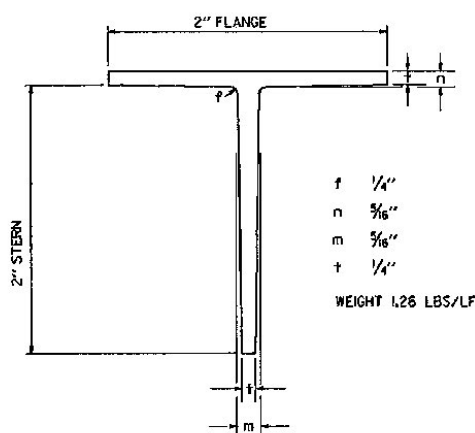


DETAIL EXTRUDED ALUMINUM RIB ALUM. ALLOY 6063-T6

WHEN PLACED BEHIND GUARDRAIL, NON-YIELDING SIGN POSTS SHALL BE PLACED OUTSIDE THE DEFLECTION DISTANCE FOR THAT PARTICULAR TYPE OF RAIL. THE SIGNPOSTS WILL NOT HAVE SLIP BASES OR BREAK-A-WAY FEATURES UNLESS THE SIGN POSTS CAN BE STRUCK BY "AN ERRANT VEHICLE LEAVING THE ROADWAY AT AN ENCROACHMENT ANGLE OR 15° OR LESS.



TYPICAL T-BAR ASSEMBLY FOR MOUNTING SERVICES SYMBOLS (24" x 24" UNITS)



TEE BAR

NOTES

1. THE ALUMINUM TEE BAR SHALL BE OF 6063T6 ALLOY MINIMUM OF 5 FEET IN LENGTH.
2. EXTRUDED ALUMINUM PANEL SIGN CLIP SHALL BE 356 T6 ALLOY FABRICATED TO GIVE PROPER CLAMPING ON ALL FLANGES (TAPERED OR PARALLEL) FROM $\frac{1}{8}$ " TO $\frac{3}{16}$ " IN THICKNESS. A FLAT WASHER SHALL BE USED UNDER THE NUT.
3. BOLTS, NUTS AND WASHERS SHALL BE STAINLESS STEEL. BOLTS SHALL BE $\frac{3}{8}$ " DIAMETER, 2 INCHES IN LENGTH WITH A HEAD CAPABLE OF BEING INSERTED INTO EXTRUDED ALUMINUM SIGN PANEL SLOTS. NUTS SHALL BE OF A LOCK NUT DESIGN, THREADS MATCHING BOLT. THE WASHER SHALL HAVE A $\frac{3}{16}$ " I.D. x $\frac{1}{4}$ " O.D. x .091 THICKNESS.

REVISIONS AND CORRECTIONS

APPROVED

SEPT. 10, 1987
DATE

David B. Kelley
CHIEF ENGINEER
Arthur Gross
DIRECTOR OF PLANNING
AND PRE-CONSTRUCTION
Stanley D. MacArthur
TRAFFIC AND SAFETY ENGINEER

TYPE "B" GUIDE SIGN
ATTACHMENT DETAILS



STANDARD
E-130