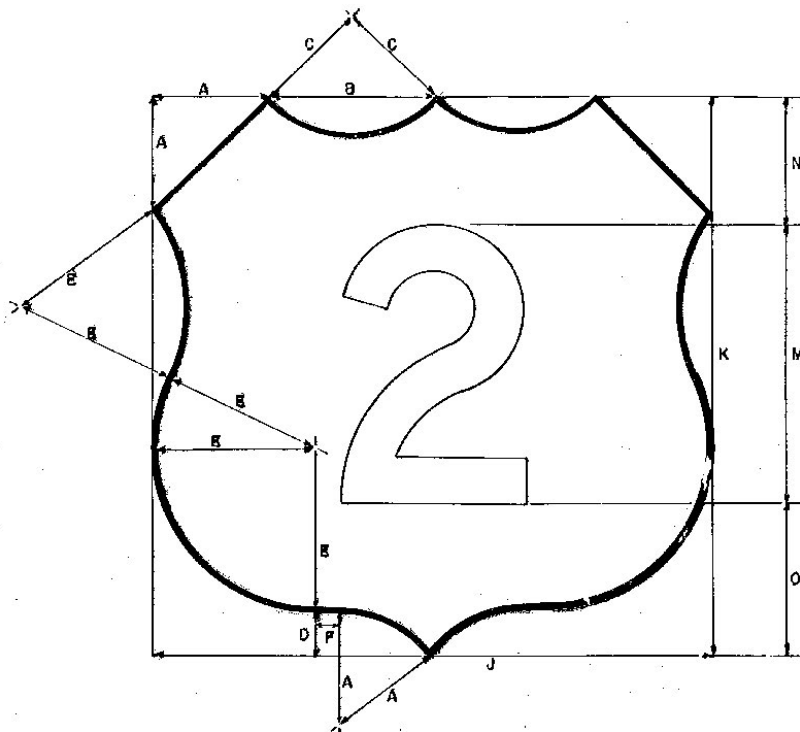
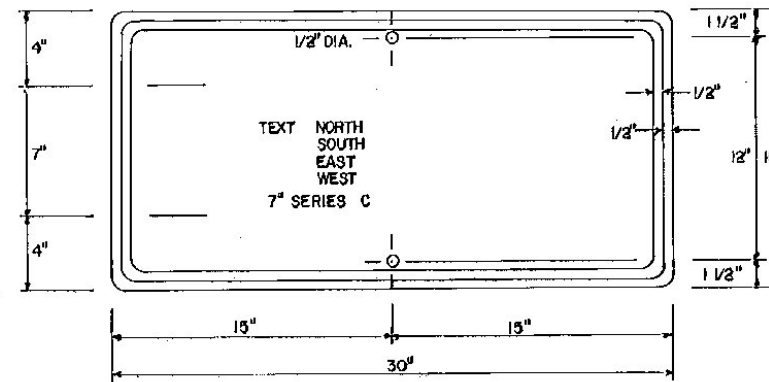
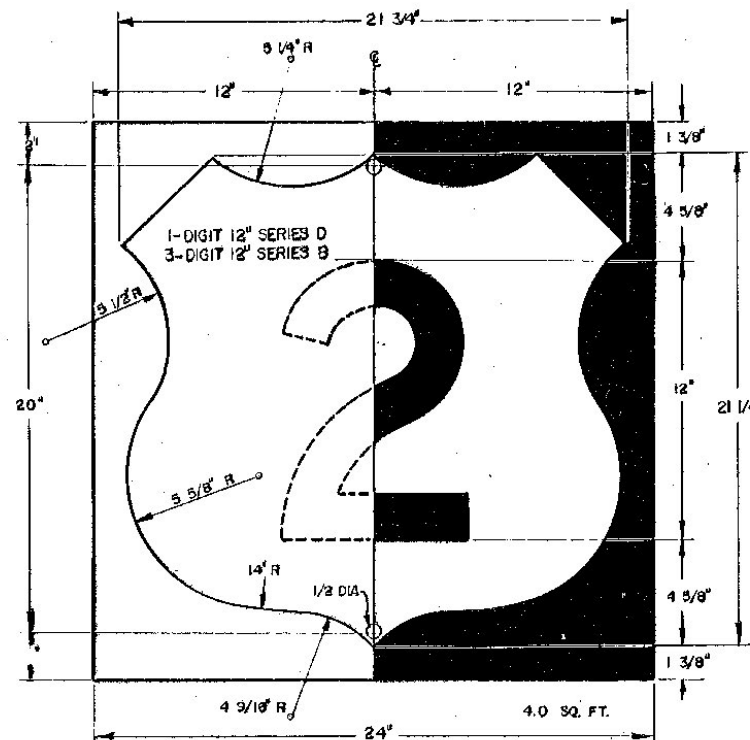


U.S. ROUTE MARKER
FOR USE ON INTERSTATE GUIDE SIGNS



SHIELD SIZE	A	B	C	D	E	F	J	K	M	N	O
24" x 24"	5	7	5	2	7	1	24	24	12	5 1/2	6 1/2
30" x 24"	5	10	9	2	7	4	30	24	12	5 1/2	8 1/2
36" x 36"	7 1/2	10 1/2	7 1/2	3	10 1/2	1 1/2	36	36	18	8 1/4	9 3/4
48" x 36"	7 1/2	15	13 1/2	3	10 1/2	5 1/2	45	36	18	8 1/4	9 3/4
48" x 48"	10	14	10	4	10	2	48	48	24	11	13

U.S. ROUTE MARKER
FOR INDEPENDENT USE WITH MARKER ASSEMBLIES



MATERIALS

The sign base material may be any of the following, of the minimum thickness noted:

- FLAT SHEET ALUMINUM
 - Less than 24" x 24" - 0.060"
 - 24" x 24" - 0.080"
- HIGH DENSITY OVERLAID PLYWOOD
 - Less than 24" x 24" - 3/8"
 - 24" x 24" - 1/2"
- GALVANIZED FLAT SHEET STEEL
 - Less than 24" x 24" - 18 gage
 - 24" x 24" - 16 gage

Route markers to be mounted on interstate guide signs, shall be of a thickness as for signs less than 24" x 24"

The reflective material shall be white or silver reflective sheeting, applied to the entire background. The texts may be lettering film, silk screened, or hand painted.

COLORS

State route markers and auxiliary markers shall have black texts on reflectorized white or silver backgrounds.

LETTERING

Letters and digits shall conform with the standard alphabets for highway signs approved by the National Joint Committee on Uniform Traffic Control Devices.

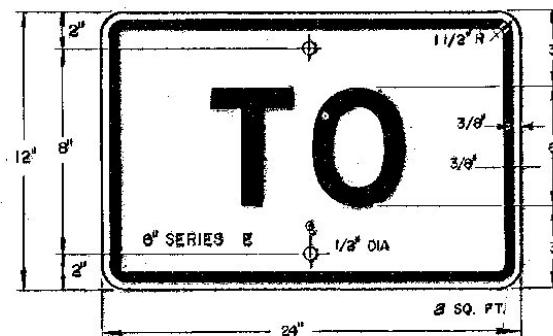
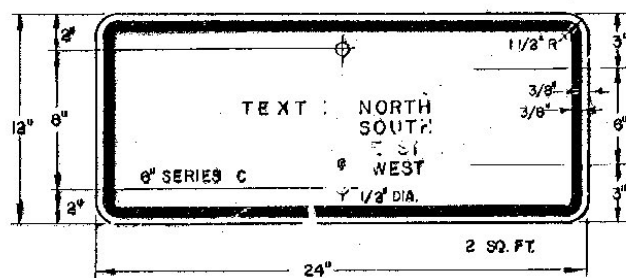
SPECIFICATIONS

State route markers and auxiliary route markers shall meet the standard state specifications for 'Traffic Signs', Item 701

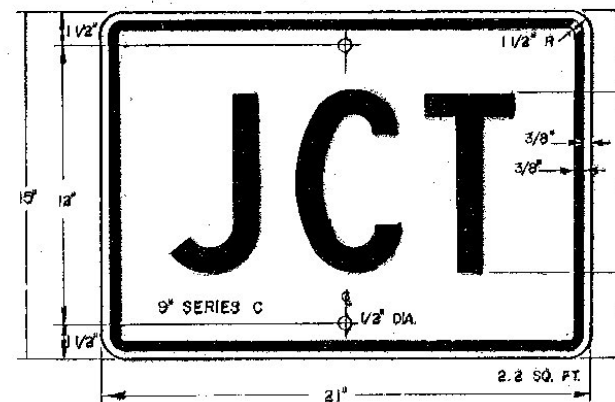
DESIGNS

The designs of U.S. Route Markers and auxiliary markers conform with the requirements set forth in the Manual on Uniform Traffic Control Devices prepared by the National Joint Committee on Uniform Traffic Control Devices.

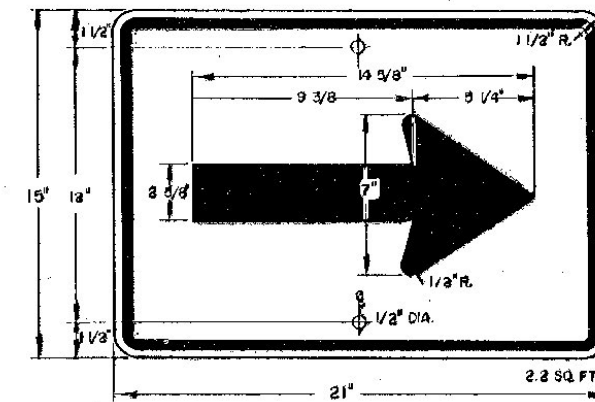
CARDINAL DIRECTION MARKER



JUNCTION MARKER



DIRECTION ARROW OR ADVANCE TURN ARROW



REVISIONS AND CORRECTIONS

- AUG 12, 1963 - DIMENSIONS FOR 3 DIGIT SHIELD ADDED
- AUG 28, 1964 - "GUIDE SIGNS" ADDED TO TITLE
- OCT 6, 1970 - REVISED TO BE IN CONFORMANCE WITH THE MANUAL ON SIGNING AND PAVEMENT MARKING OF THE NATIONAL SYSTEM OF INTERSTATE AND DEFENCE HIGHWAYS 1970 ADDITION.
- FEB 4, 1971 - REVISED TO BE IN CONFORMANCE WITH THE MANUAL ON UNIFORM TRAFFIC CONTROL DEVICES 1971 ADDITION. DIMENSIONS CHANGED.
- MAR. 10, 1971 -

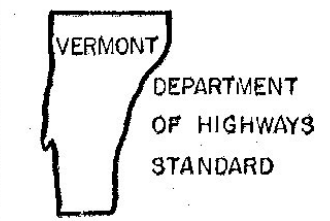
APPROVED:
OCT. 21, 1970

C. P. Knapp
TRAFFIC ENGINEER

DRAWN A.W.O.
TRACED A.J.A.

R. W. Crowell
CHIEF ENGINEER
E. B. Dickman
ASST. CHIEF ENGINEER
G. M. Lane
HIGHWAY ENGINEER

TRAFFIC SIGNS (GUIDE SIGNS)
U.S. ROUTE MARKERS
AND AUXILIARY MARKERS



E-12