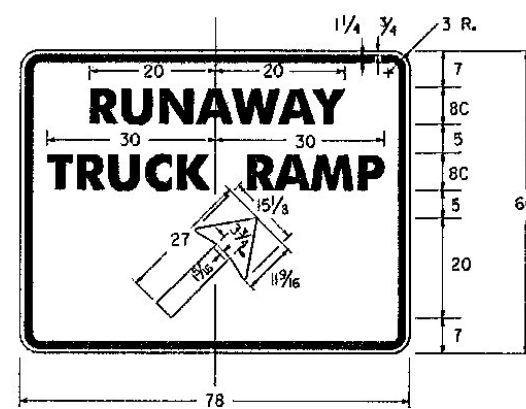


ALL SIGN DIMENSIONS ARE IN INCHES



COLORS

ALL THE WARNING SIGNS SHOWN ON THIS SHEET SHALL HAVE BLACK TEXT AND SYMBOLS ON REFLECTORIZED YELLOW BACKGROUND EXCEPT AS OTHERWISE NOTED. THE COLORS SHALL CONFORM WITH THE COLORS ADOPTED BY THE AMERICAN ASSOCIATION OF STATE HIGHWAY AND TRANSPORTATION OFFICIALS AND APPROVED BY THE DEPARTMENT OF TRANSPORTATION, FEDERAL HIGHWAY ADMINISTRATION.

MATERIALS

THE SIGN BASE MATERIALS USED FOR THE WARNING SIGNS SHOWN ON THIS SHEET MAY BE ANY OF THE FOLLOWING.

- A) EXTRUDED ALUMINUM PANELS, WITH REFLECTIVE SHEETING.
- B) FORMED GALVANIZED STEEL PANELS, WITH REFLECTIVE SHEETING.

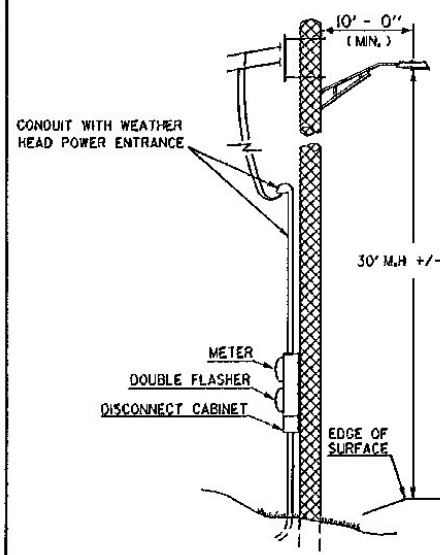
THE TEXT, BORDER AND SYMBOLS SHALL BE LETTERING FILM, SILK SCREENED OR HAND PAINTED. WHEN HAND PAINTED, POOR WORKMANSHIP SHALL BE CAUSE FOR REJECTION. THE REFLECTIVE MATERIAL SHALL BE REFLECTIVE SHEETING APPLIED TO THE ENTIRE BACKGROUND OF THE SIGN. ENCAPSULATED LENS REFLECTIVE SHEETING SHALL BE USED FOR THE SIGN BACKGROUND.

TEXT DESIGN

LETTERS, DIGITS, SYMBOLS, SPACINGS, AND TEXT DIMENSIONS SHALL CONFORM WITH THE STANDARD ALPHABETS AND DESIGNS PRESCRIBED IN THE "MANUAL ON UNIFORM TRAFFIC CONTROL DEVICES".

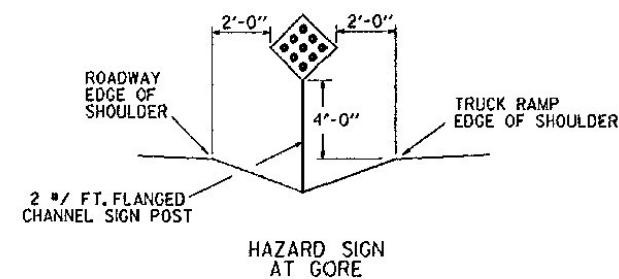
SPECIFICATIONS

WARNING SIGNS SHALL MEET THE VERMONT STANDARD SPECIFICATIONS FOR "TRAFFIC SIGNS".

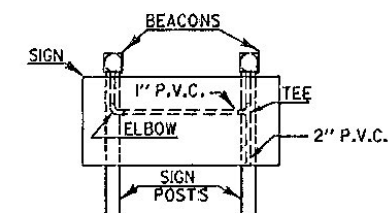


THE "RUNAWAY TRUCK RAMP" YELLOW LENS FLASHING BEACONS AND RELATED EQUIPMENT CONSISTING OF FLASHER, RADIO INTERFERENCE FILTER, CIRCUIT BREAKERS IN RAINTIGHT CABINET SHALL CONFORM WITH SUB-SECTION 752.07.

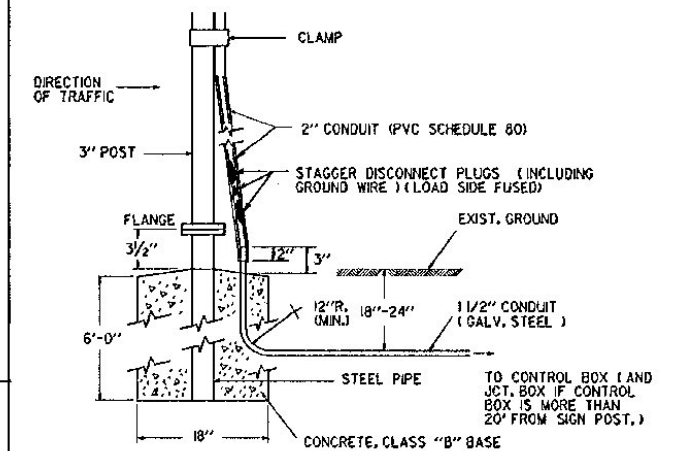
POWER POLE AND LUMINAIRE DETAIL



HAZARD SIGN AT GORE



CONDUIT DETAILS BETWEEN BEACONS
(SIGN SHOWN FACING TRAFFIC)

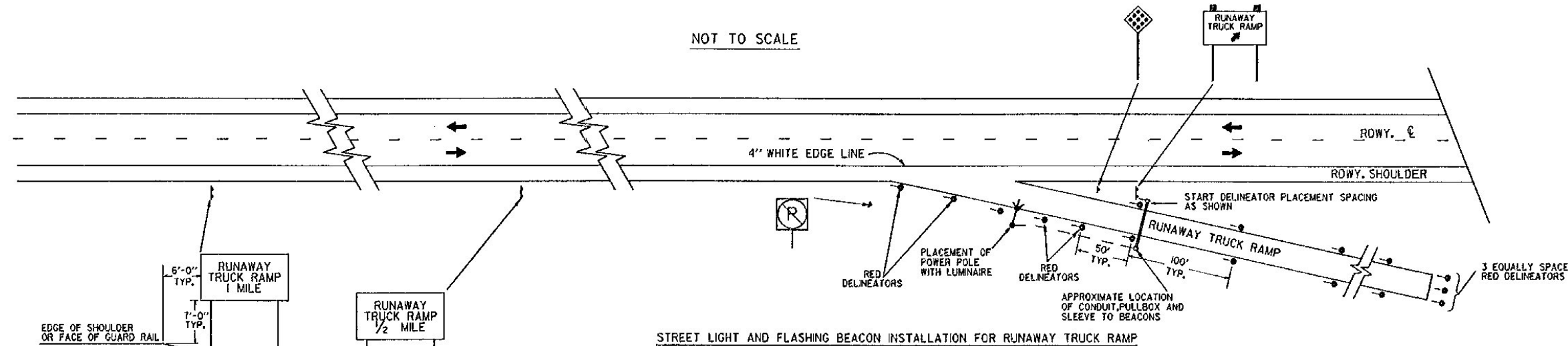


NOTES:

WIRE CONNECTIONS AT THE BASE OF THE SIGNPOST SHALL BE FUSED ON THE LOAD SIDE WITH A WATERTIGHT PLUG-IN TYPE CONNECTOR WHICH WILL DISCONNECT WITHOUT DAMAGE DURING A POST KNOCKDOWN.

THE CONTRACTOR SHALL SUPPLY AND INSTALL THE INDICATED EQUIPMENT AND ALL NECESSARY HARDWARE SUCH AS BEACONS, WIRE (1/2 MIN.), CABLE, METER SOCKET, CONDUIT AND POLE RISER WITH WEATHER HEAD, POWER POLE, JCT. BOX, CONDUIT AND MSC. MATERIAL REQUIRED TO MAKE THE BEACONS OPERATIONAL. PAYMENT FOR THIS SYSTEM WILL BE FOR FLASHING BEACON, EACH, SIGNS AND POSTS WILL BE PAID AS SEPARATE ITEMS.

SIGN POST BASE DETAIL



STREET LIGHT AND FLASHING BEACON INSTALLATION FOR RUNAWAY TRUCK RAMP

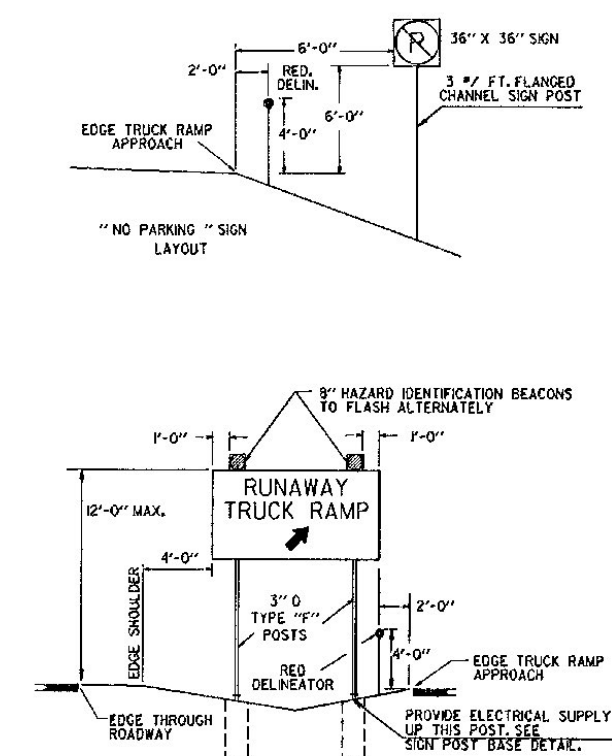
INSTALL A WOOD POLE OF SUFFICIENT LENGTH TO MOUNT A LUMINAIRE WITH A 30 FOOT MOUNTING HEIGHT AND TO BE USED AS THE POWER DROP POLE. THE LOCATION OF THIS POLE SHALL BE BEYOND THE SAFETY ZONE OF THE THROUGH LANE AND BE AT LEAST 10 FEET OFF THE EDGE OF PAVEMENT OF THE TRUCK ESCAPE RAMP. LIGHT POLE TO BE SET APPROXIMATELY AT THE GORE AREA OF THE THRU WAY AND THE TRUCK ESCAPE RAMP.

INSTALL A RAINTIGHT ENCLOSURE ON THIS POLE WITH METER SOCKET, FLASHER AND AT LEAST TWO CIRCUIT BREAKERS AND MAIN DISCONNECT FOR STREET LIGHT AND FLASHING BEACONS.

THE LUMINAIRE TO BE EITHER A 150 WATT HIGH PRESSURE SODIUM OR A 250 WATT MERCURY VAPOR WITH CUT-OFF OPTICS, TYPE II DISTRIBUTION AND BRACKET ARM OF SUFFICIENT LENGTH SO LUMINAIRE IS OVER PAVED EDGE OF TRUCK ESCAPE RAMP.

THE ELECTRICAL CIRCUITRY FOR THE FLASHING BEACONS SHALL BE RUN UNDERGROUND FROM THE ABOVE MENTIONED POWER DROP POLE TO THE NEAR POLE OF THE FLASHING BEACON INSTALLATION. USE 1 1/2" INCH CONDUIT, STEEL OR P.V.C. AND TRENCH OR JACK A 8" SLEEVE UNDER THE TRUCK ESCAPE RAMP WITH NECESSARY PULLBOXES AS PER PLAN. SEE RUNAWAY TRUCK RAMP DETAIL SHEET FOR ADDITIONAL DETAILS.

PAYMENT FOR THE ABOVE INSTALLATION OF THE STREET LIGHT AND BEACONS SHALL BE UNDER ITEM 679.6 FLASHING BEACONS, SIGNS AND POSTS TO BE PAID AS SEPARATE ITEMS.



REVISIONS AND CORRECTIONS

APPROVED

8/22/88
DATE

David B. Keller
CHIEF ENGINEER
Arthur J. ...
DIRECTOR OF PLANNING
AND PRE-CONSTRUCTION
Stephen R. ...
TRAFFIC AND SAFETY ENGINEER

RUNAWAY TRUCK RAMP
SIGN DETAIL SHEET



STANDARD
E-129