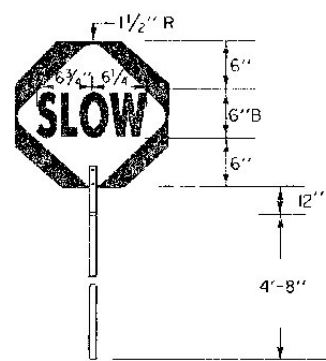
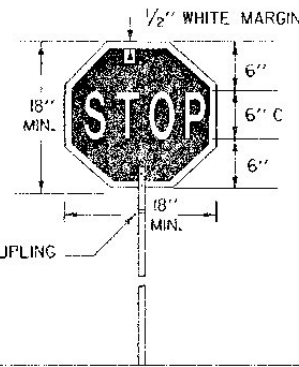


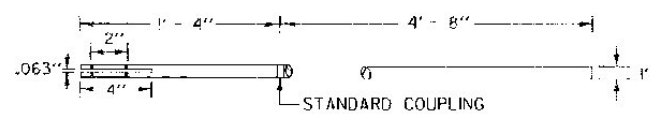
ORANGE REFLECTORIZED DIAMOND WITH BLACK TEXT AND BORDER



RED REFLECTORIZED OCTAGON WITH WHITE REFLECTORIZED TEXT



SIGN DETAIL



STAFF DETAIL

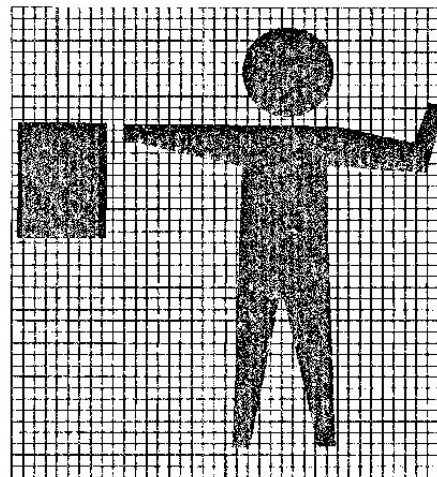
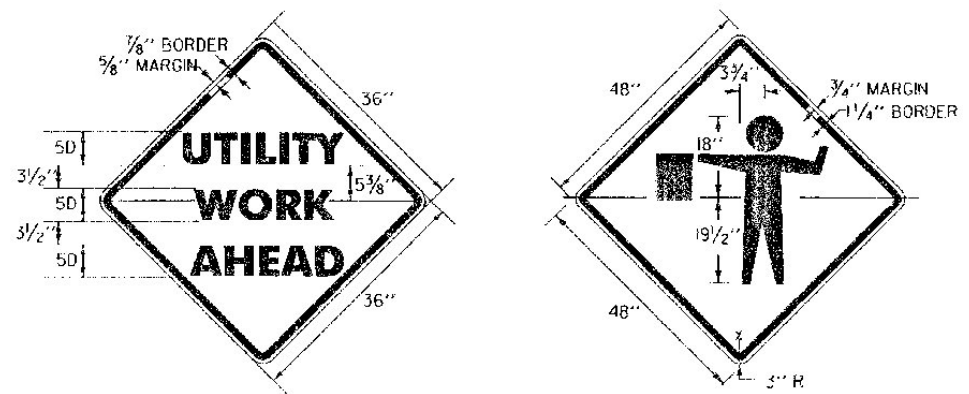
MATERIALS

THE SIGN MATERIALS SHALL BE 0.063\"/>

MOUNTING

THE STAFF SHALL BE MOUNTED WITH EITHER TWO 1/2\"/>

SIGN PADDLE FOR FLAGPERSON



INSTALLATION

THE SIGNS SHALL BE IN-PLACE AT THE TIME THE PROJECT COMMENCES. EACH SIGN SHALL BE ERECTED IN A NEAT AND PROFESSIONAL MANNER ON WOOD OR METAL POSTS SET SECURELY IN THE GROUND. UNLESS OTHERWISE NOTED ON THIS SHEET, THE BOTTOM OF A SIGN, UNLESS OTHERWISE NOTED SHALL BE AT LEAST 7 FEET ABOVE EDGE OF TRAVEL WAY, AND THE NEAREST EDGE OF A SIGN SHALL BE AT LEAST 6 FEET OUTSIDE THE SHOULDER POINT OR 2 FEET OUTSIDE GUARD RAIL, CURBING OR SIDEWALK. SIGNS MOUNTED ON BARRICADES OR TEMPORARY SUPPORTS SHALL BE POSITIONED SUCH THAT THE BOTTOM OF THE SIGN IS NOT LESS THAN ONE FOOT ABOVE THE PAVEMENT ELEVATION.

REFLECTORIZATION

ALL REFLECTORIZED MATERIAL SHALL CONSIST OF AASHTO TYPE IIA, TYPE III(A & B), OR TYPE IIIC REFLECTIVE SHEETING. THE TEXT AND BORDERS MAY BE SCREENED, LETTERING FILM OR HAND PAINTED.

COLORS

THE WARNING SIGNS SHOWN ON THIS SHEET SHALL HAVE BLACK TEXT BORDER AND SYMBOLS ON A REFLECTORIZED ORANGE BACKGROUND THE ORANGE SHALL CONFORM WITH THE STANDARD COLORS ADOPTED BY THE AMERICAN ASSOCIATION OF STATE HIGHWAY AND TRANSPORTATION OFFICIALS (AASHTO) AND APPROVED BY THE U.S. DEPARTMENT OF TRANSPORTATION, FEDERAL HIGHWAY ADMINISTRATION (FHWA).

TEXT DESIGN

LETTERS, DIGITS, SPACING AND TEXT DIMENSIONS SHALL CONFORM WITH THE STANDARD ALPHABETS AND DESIGN PRESCRIBED IN THE 'MANUAL ON UNIFORMED TRAFFIC CONTROL DEVICES' (MUTCD).

SPECIFICATIONS

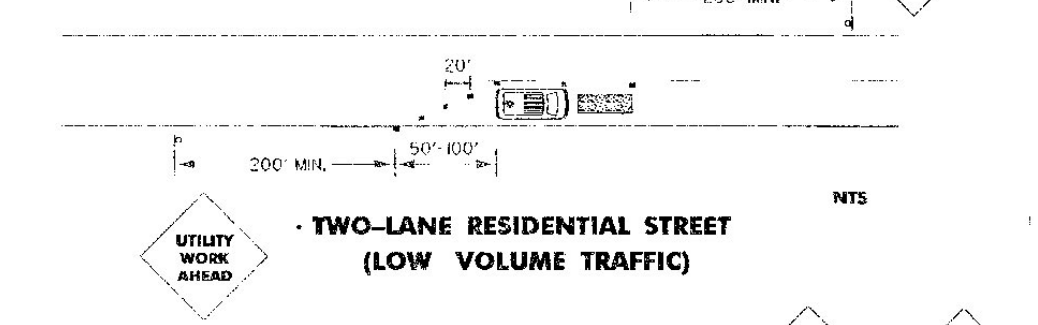
WARNING SIGNS SHALL MEET THE STANDARD STATE SPECIFICATIONS FOR TRAFFIC SIGNS.

SIGN BASE MATERIAL

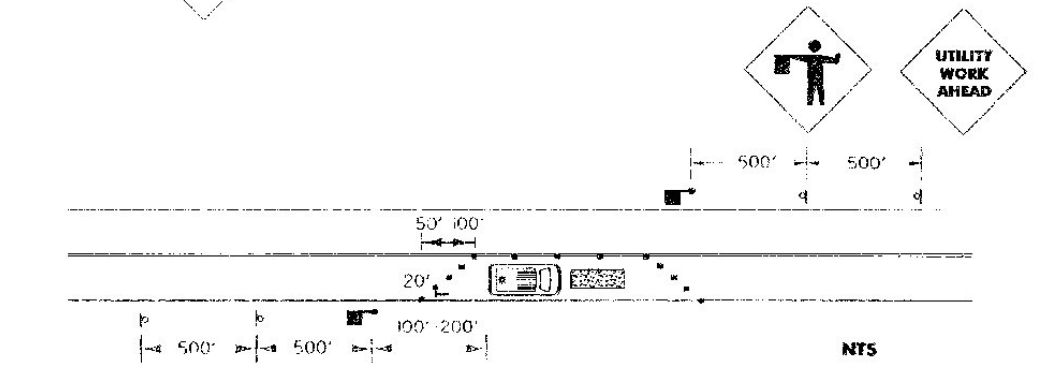
THE SIGN BASE MATERIAL USED FOR THE WARNING SIGNS ON THIS SHEET MAY BE OF ANY OF THE FOLLOWING WITH MINIMUM THICKNESS AS NOTED.

- FLAT SHEET ALUMINUM - 0.125 INCHES
- HIGH DENSITY OVERLAYED PLYWOOD - 5/8 INCHES
- GALVANIZED SHEET METAL - 12 GAUGE

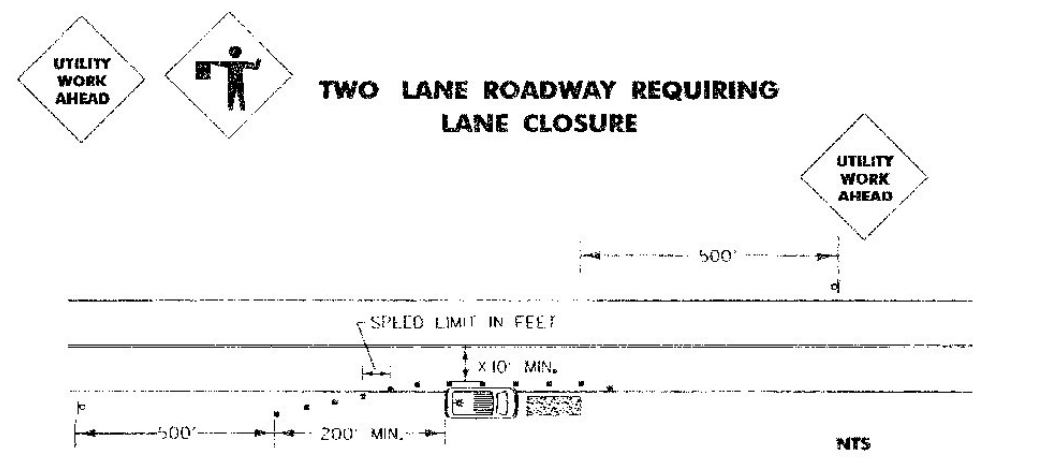
THIS LAYOUT SHOULD ONLY BE USED ON ROADS WITH SPEED LIMITS LESS THAN 30 MPH AND WHERE SIGHT DISTANCE IS ADEQUATE FOR BOTH DIRECTIONS OF APPROACHING TRAFFIC.



TWO-LANE RESIDENTIAL STREET (LOW VOLUME TRAFFIC)



TWO LANE ROADWAY REQUIRING LANE CLOSURE

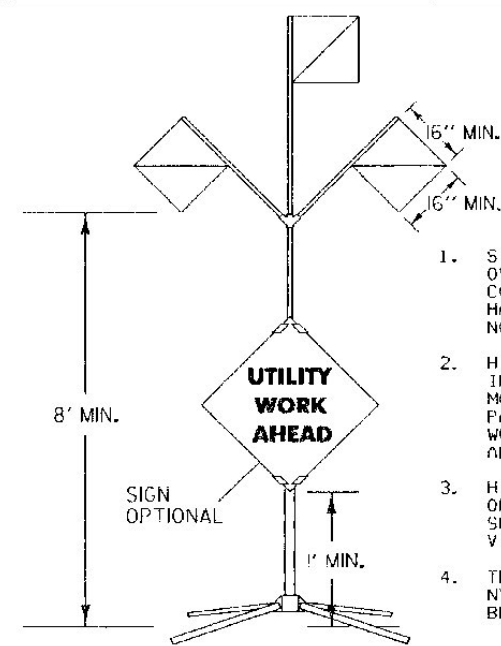


TWO LANE HIGHWAY SHOULDER WORK AREA

LEGEND

| | |
|--|---------------------------------------|
| | WORK AREA |
| | SIGN & POSTS |
| | FLAGPERSON |
| | CHANNELIZING DEVICES (CONES OR DRUMS) |

OTHER STDS. REQUIRED:



HIGH LEVEL WARNING DEVICE

GENERAL NOTES

1. SIGN SUPPORTS MAY BE WEIGHTED TO PREVENT OVERTURNING. APPROPRIATE BALLAST SHALL BE CONSIDERED THAT WHICH DOES NOT CREATE A HAZARD TO THE IMPACTING VEHICLE AND DOES NOT BECOME A PROJECTILE UPON IMPACT.
2. HIGH LEVEL WARNING DEVICES ARE COMMONLY USED IN URBAN HIGH DENSITY SITUATIONS TO WARN MOTORISTS OF OPERATIONS SUCH AS PAVEMENT PATCHING, MANHOLE WORK, SURVEYING, UTILITY WORK, ETC., OR IN RURAL AREAS REQUIRING ADDITIONAL VISIBILITY.
3. HIGH LEVEL WARNING DEVICES MAY BE USED WITH OR WITHOUT SIGNS. THEY SHOULD BE USED ONLY TO SUPPLEMENT OTHER DEVICES WHERE ADDITIONAL VISIBILITY IS NEEDED.
4. THE THREE FLAGS SHALL BE FLUORESCENT ORANGE NYLON-VINYL WITH A DIAGONAL STAY. THEY SHALL BE A MINIMUM OF 16\"/>

REVISIONS AND CORRECTIONS

AUG 08, 1995 - SUPERSEDES STD E-9 AND UPDATED TO NEW CHAPTER VI OF MUTCD

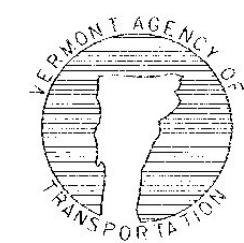
APPROVED FOR THIS PROJECT AND/OR DESIGN IMPLEMENTATION. FHWA FINAL APPROVAL PENDING.

APPROVED

Stephen D. MacCullin
DIRECTOR OF ENGINEERING

David A. Ross
TRAFFIC AND SAFETY ENGINEER

UTILITY WORK ZONE



STANDARD E-119