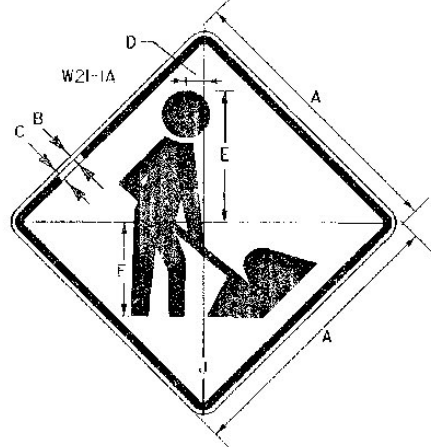
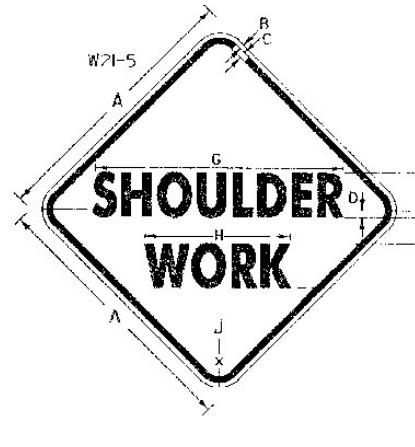


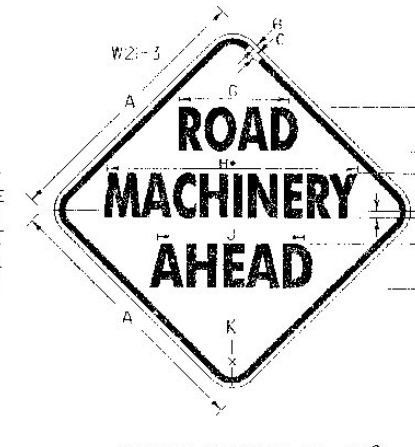
**4 - LANE HIGHWAY  
MEDIAN MAINTENANCE**



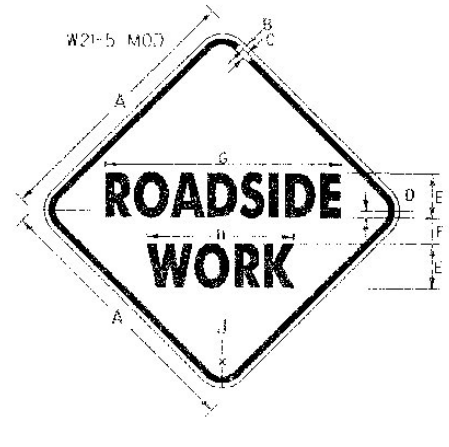
SIGN	DIMENSIONS (INCHES)						
	A	B	C	D	E	F	J
2 LANE	36	3/8	3/8	5 3/4	5 3/4	4 1/4	2 1/4
4 LANE	48	3/4	3/4	7 1/2	7 1/2	5	3



SIGN	DIMENSIONS (INCHES)									
	A	B	C	D	E	F	G	H	J	K
2 LANE	36	3/8	3/8	1	5-0	3 1/2	34 3/4	17 3/4	2 1/4	2 1/4
4 LANE	48	3/4	3/4	1	7-0	4	38 3/4	20 3/4	3	3

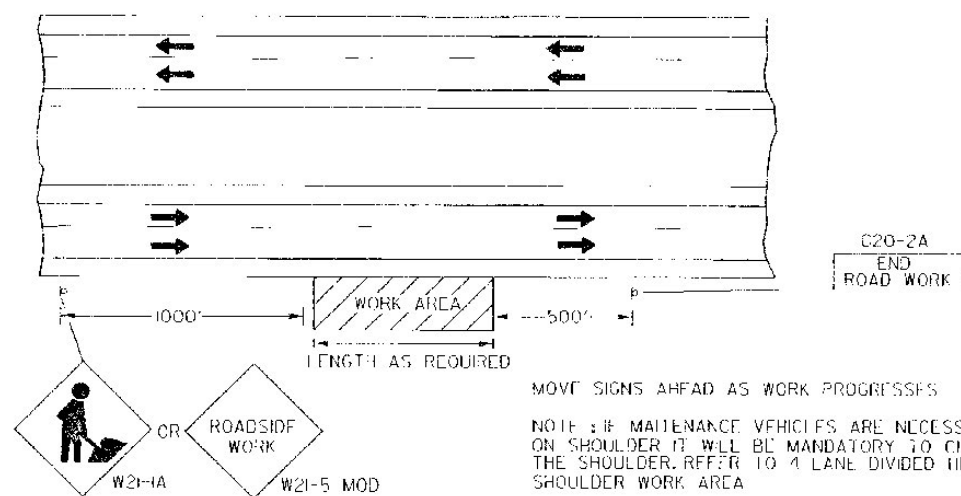


SIGN	DIMENSIONS (INCHES)										
	A	B	C	D	E	F	G	H	J	K	L
2 LANE	36	3/8	3/8	5-0	1	2 1/4	17 3/4	34 3/4	2 1/4	2 1/4	2 1/4
4 LANE	48	3/4	3/4	7-0	1	3 1/2	24 3/4	48 3/4	3	3	3

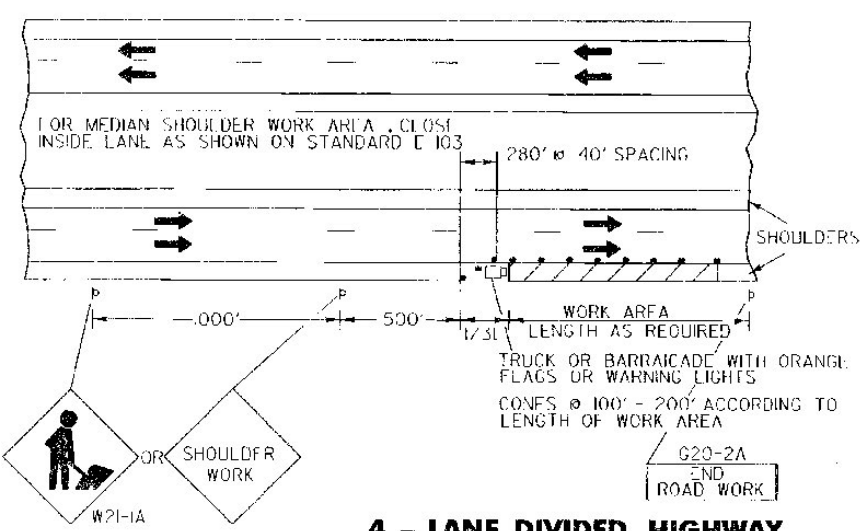


SIGN	DIMENSIONS (INCHES)									
	A	B	C	D	E	F	G	H	J	K
2 LANE	36	3/8	3/8	1	5-0	3 1/2	31 3/4	17 3/4	2 1/4	2 1/4
4 LANE	48	3/4	3/4	1	7-0	4	35 3/4	20 3/4	3	3

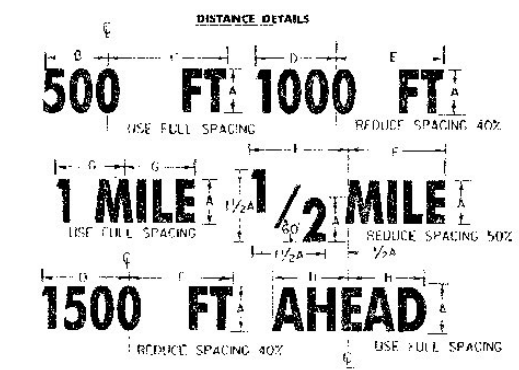
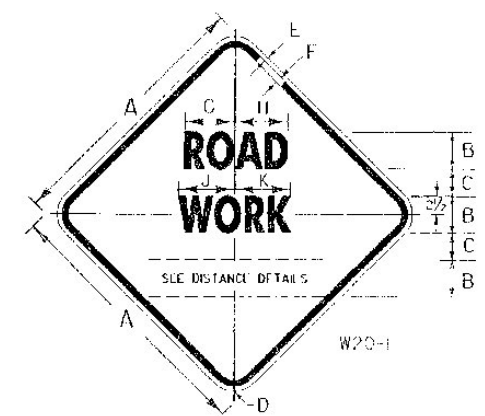
\* REDUCE SPACING BY 40%



**4 - LANE HIGHWAY  
MAINTENANCE OUTSIDE SHOULDER**

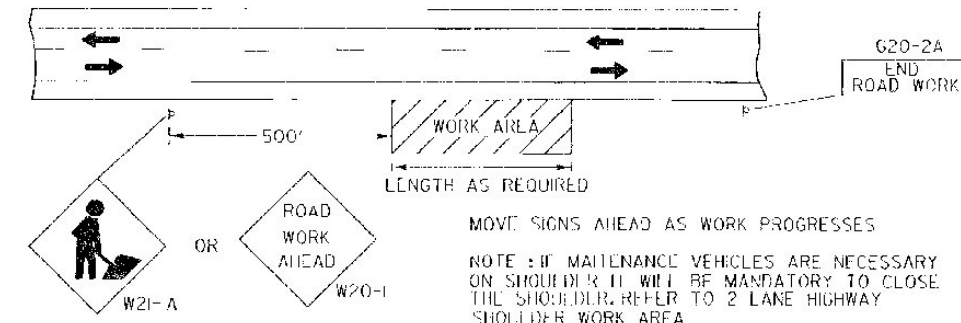


**4 - LANE DIVIDED HIGHWAY  
SHOULDER WORK AREA**

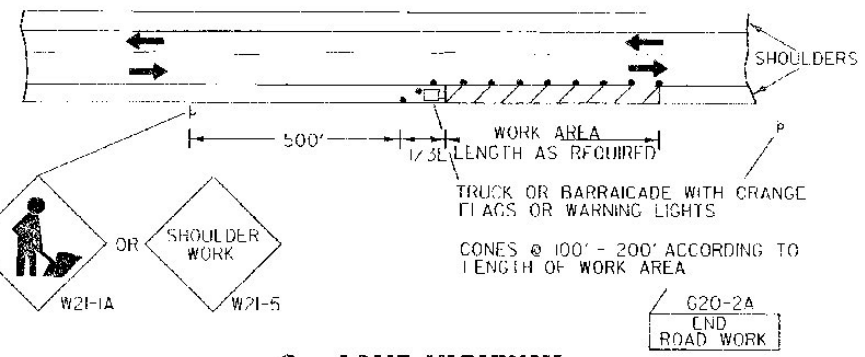


**NOTES:**  
 REFLECTORIZATION: ALL REFLECTIVE MATERIAL SHALL CONSIST OF ENCAPSULATED LENS REFLECTIVE SHEETING, THE TEXT AND BORDERS MAY BE SCREENED, LETTERING FILM, OR HAND PAINTED.  
 COLORS: THE WARNING SIGNS SHOWN ON THIS SHEET SHALL HAVE A BLACK TEXT AND BORDER ON A REFLECTORIZED ORANGE BACKGROUND. THE ORANGE SHALL CONFORM WITH THE STANDARD COLORS ADOPTED BY THE AMERICAN ASSOCIATION OF STATE HIGHWAY AND TRANSPORTATION OFFICIALS AND APPROVED BY THE U.S. DEPT. OF TRANSPORTATION, FEDERAL HIGHWAY ADMINISTRATION.  
 TEXT DESIGN: LETTERS, SPACING, AND TEXT DIMENSIONS SHALL CONFORM WITH THE STANDARD ALPHABETS AND DESIGN PRESCRIBED IN THE MANUAL ON UNIFORM TRAFFIC CONTROL DEVICES.  
 SPECIFICATIONS: WARNING SIGNS SHALL MEET THE STANDARD STATE SPECIFICATIONS FOR SIGNS.  
 SIGN BASE MATERIAL: THE SIGN BASE MATERIAL USED FOR THE WARNING SIGNS SHOWN ON THIS SHEET MAY BE ANY OF THE FOLLOWING, WITH MINIMUM THICKNESS AS NOTED:

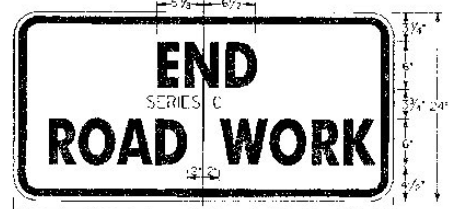
(1) FLAT SHEET ALUMINUM	36x36	48x48	INCHES
(2) HIGH DENSITY OVERLAYERED PLYWOOD	0.100	0.125	INCHES
(3) GALVANIZED SHEET STEEL	3/8	3/4	INCHES GAGE
	1/4	1/2	



**2 - LANE HIGHWAY  
MAINTENANCE OUTSIDE SHOULDER**



**2 - LANE HIGHWAY  
SHOULDER WORK AREA**



**REVISIONS AND CORRECTIONS**  
 JAN. 26, 1972 - DATE OF ORIGINAL ISSUE  
 FEB. 29, 1972 - REVISED PER DIRECTION OF THE FEDERAL HIGHWAY ADMINISTRATION  
 MAY 14, 1974 - REFLECTIVE MATERIAL CHANGE  
 JUN. 8, 1977 - REFLECTIVE MATERIAL NOTE CHANGE SIGNS REFERENCED TO NUMBERS IN M.U.T.C.D.  
 AUG. 10, 1977 - PERSON WORKING SIGN CHANGED TO SYMBOL  
 DEC. 9, 1981 - MINOR SIGN DIMENSION CHANGES  
 FEB. 3, 1986 - UPDATED TO 1986 SPECIFICATIONS  
 AUG. 08, 1995 - UPDATED TO 1993 CHAPTER 6 - M.U.T.C.D.

APPROVED  
*Samuel D. MacCallum*  
 DIRECTOR OF ENGINEERING  
  
*David A. Ross*  
 TRAFFIC AND SAFETY ENGINEER

**TRAFFIC SIGNS  
 TYPICAL MINOR  
 MAINTENANCE OPERATION  
 APPROACH SIGNS**

**OTHER STDS. E-103  
 REQUIRED:**

**STANDARD  
 E-10**

APPROVED FOR THIS PROJECT AND/OR DESIGN IMPLEMENTATION, FHWA FINAL APPROVAL PENDING.