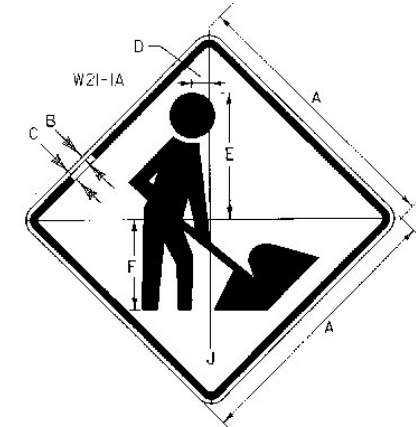
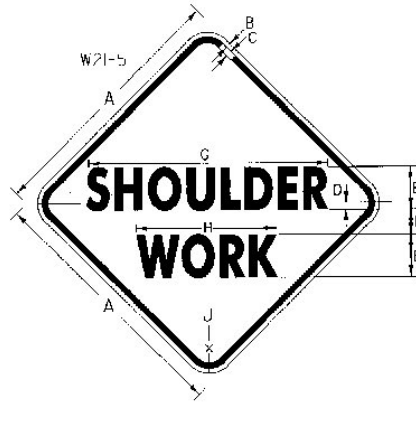


**4 - LANE HIGHWAY
MEDIAN MAINTENANCE**

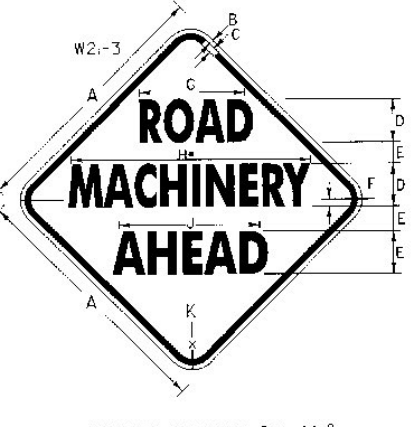
MOVE SIGNS AHEAD AS WORK PROGRESSES



SIGN	DIMENSIONS (INCHES)						
	A	B	C	D	E	F	J
2 LANE	36	5/8	7/8	5 3/4	15 3/4	4 1/4	2 1/4
4 LANE	48	3/4	1 1/4	7 1/2	20	5	3

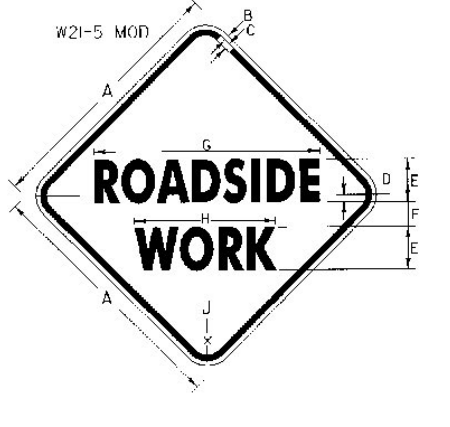


SIGN	DIMENSIONS (INCHES)									
	A	B	C	D	E	F	G	H	J	K
2 LANE	36	5/8	7/8	1	5-D	3 1/2	3 1/4	17 3/8	2 1/4	
4 LANE	48	3/4	1 1/4	7-C	4	3 3/4	20 1/4	3		

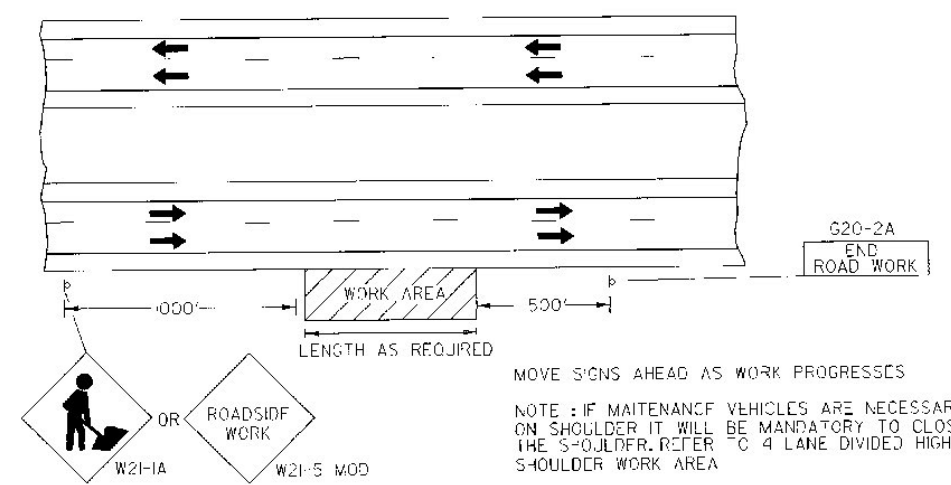


SIGN	DIMENSIONS (INCHES)									
	A	B	C	D	E	F	G	H	J	K
2 LANE	36	5/8	7/8	5-D	4	2 1/2	1 1/4	3 1/4	2 1/4	2 1/4
4 LANE	48	3/4	1 1/4	7-D	5	3 1/2	2 1/2	18 1/4	3	3

• REDUCE SPACING BY 40 %

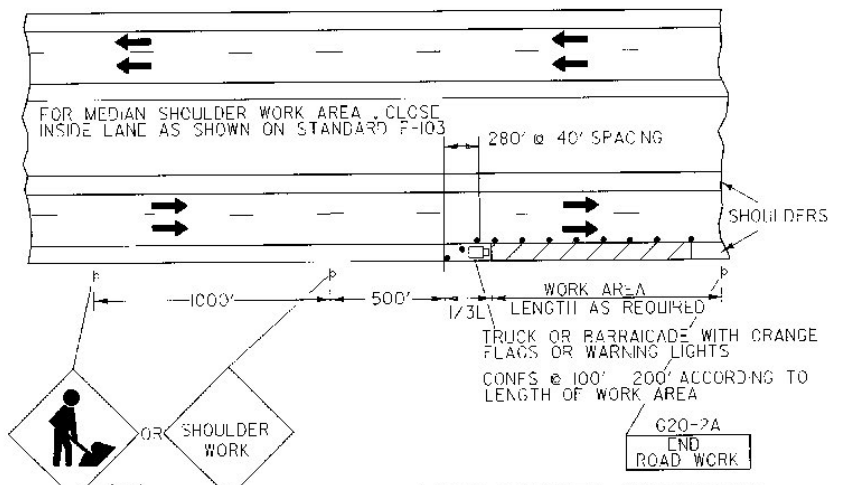


SIGN	DIMENSIONS (INCHES)						
	A	B	C	D	E	F	J
2 LANE	36	5/8	7/8	1 1/2	5-D	3 1/2	2 1/4
4 LANE	48	3/4	1 1/4	1	7-C	4	3 1/2



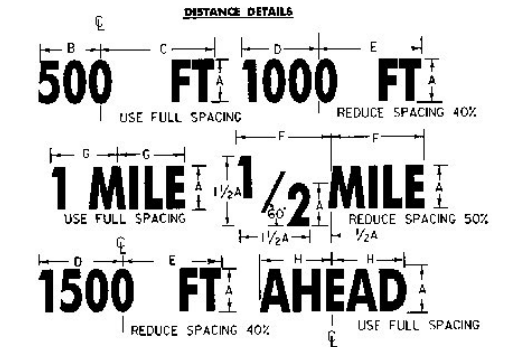
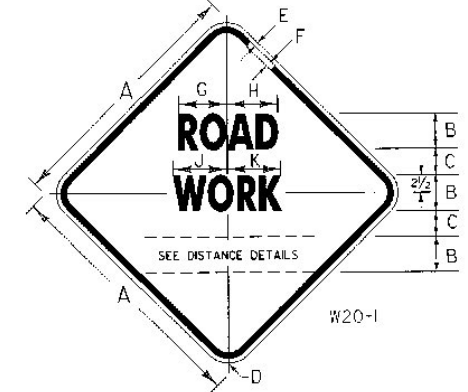
**4 - LANE HIGHWAY
MAINTENANCE OUTSIDE SHOULDER**

NOTE: IF MAINTENANCE VEHICLES ARE NECESSARY ON SHOULDER IT WILL BE MANDATORY TO CLOSE THE SHOULDER. REFER TO 4 LANE DIVIDED HIGHWAY SHOULDER WORK AREA.



**4 - LANE DIVIDED HIGHWAY
SHOULDER WORK AREA**

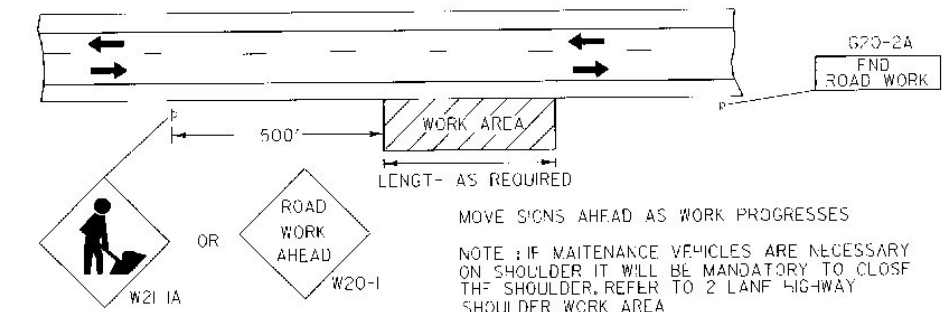
TRUCK OR BARRICADE WITH ORANGE FLAGS OR WARNING LIGHTS
CONES @ 100' - 200' ACCORDING TO LENGTH OF WORK AREA



NOTES:

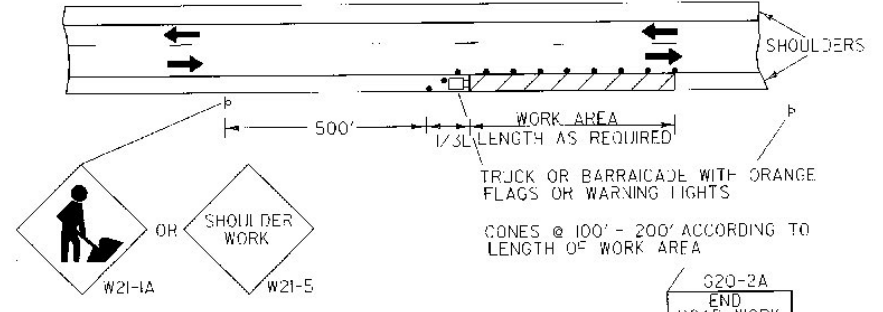
REFLECTORIZATION: ALL REFLECTIVE MATERIAL SHALL CONSIST OF ENCAPSULATED LENS REFLECTIVE SHEETING, THE TEXT AND BORDERS MAY BE SCREENED, LETTERING FILM, OR HAND PAINTED.
COLORS: THE WARNING SIGNS SHOWN ON THIS SHEET SHALL HAVE A BLACK TEXT AND BORDER ON A REFLECTORIZED ORANGE BACKGROUND. THE ORANGE SHALL CONFORM WITH THE STANDARD COLORS ADOPTED BY THE AMERICAN ASSOCIATION OF STATE HIGHWAY AND TRANSPORTATION OFFICIALS AND APPROVED BY THE U.S. DEPT. OF TRANSPORTATION, FEDERAL HIGHWAY ADMINISTRATION.
TEXT DESIGN: LETTERS, SPACING, AND TEXT DIMENSIONS SHALL CONFORM WITH THE STANDARD ALPHABETS AND DESIGN PRESCRIBED IN THE MANUAL ON UNIFORM TRAFFIC CONTROL DEVICES.
SPECIFICATIONS: WARNING SIGNS SHALL MEET THE STANDARD STATE SPECIFICATIONS FOR SIGNS.
SIGN BASE MATERIAL: THE SIGN BASE MATERIAL USED FOR THE WARNING SIGNS SHOWN ON THIS SHEET MAY BE OF ANY OF THE FOLLOWING, WITH MINIMUM THICKNESS AS NOTED:

	36X36	48X48	INCHES
(1) FLAT SHEET ALUMINUM	0.005	0.125	INCHES
(2) HIGH DENSITY OVERLAPPED PLYWOOD	5/8	3/4	INCHES
(3) GALVANIZED SHEET STEEL	14	12	GAGE



**2 - LANE HIGHWAY
MAINTENANCE OUTSIDE SHOULDER**

NOTE: IF MAINTENANCE VEHICLES ARE NECESSARY ON SHOULDER IT WILL BE MANDATORY TO CLOSE THE SHOULDER. REFER TO 2 LANE HIGHWAY SHOULDER WORK AREA.



**2 - LANE HIGHWAY
SHOULDER WORK AREA**

TRUCK OR BARRICADE WITH ORANGE FLAGS OR WARNING LIGHTS
CONES @ 100' - 200' ACCORDING TO LENGTH OF WORK AREA



**OTHER STDS. E-103
REQUIRED:**

REVISIONS AND CORRECTIONS
JAN. 26, 1972 - DATE OF ORIGINAL ISSUE
FEB. 29, 1972 - REVISED PER DIRECTION OF THE FEDERAL HIGHWAY ADMINISTRATION
MAY 14, 1974 - REFLECTIVE MATERIAL CHANGE
JUN. 8, 1977 - REFLECTIVE MATERIAL NOTE CHANGE SIGNS REFERENCED TO NUMBERS IN M.U.T.C.D.
AUG. 10, 1977 - PERSON WORKING SIGN CHANGED TO SYMBOL
DEC. 9, 1986 - MINOR SIGN DIMENSION CHANGES
FEB. 3, 1986 - UPDATED TO 1986 SPECIFICATIONS
AUG. 08, 1995 - UPDATED TO 1995 CHAPTER 6 M.U.T.C.D.

APPROVED
Stanley D. MacArthur
DIRECTOR OF ENGINEERING
David A. Ross
TRAFFIC AND SAFETY ENGINEER

**TRAFFIC SIGNS
TYPICAL MINOR
MAINTENANCE OPERATION
APPROACH SIGNS**

/traf/sig/stdel0.dgn : stdel01



**STANDARD
E-10**

APPROVED FOR THIS PROJECT AND/OR DESIGN IMPLEMENTATION. FHWA FINAL APPROVAL PENDING.