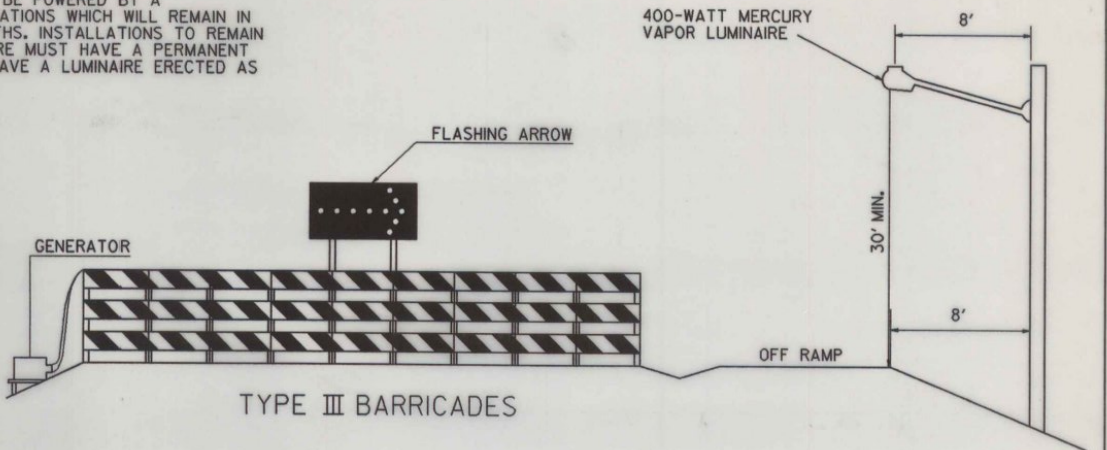


THE FLASHING ARROW BOARD MAY BE POWERED BY A PORTABLE GENERATOR AT INSTALLATIONS WHICH WILL REMAIN IN SERVICE FOR LESS THAN SIX MONTHS. INSTALLATIONS TO REMAIN IN PLACE FOR SIX MONTHS OR MORE MUST HAVE A PERMANENT POWER SOURCE AND ALSO MUST HAVE A LUMINAIRE ERECTED AS INDICATED AT RIGHT.

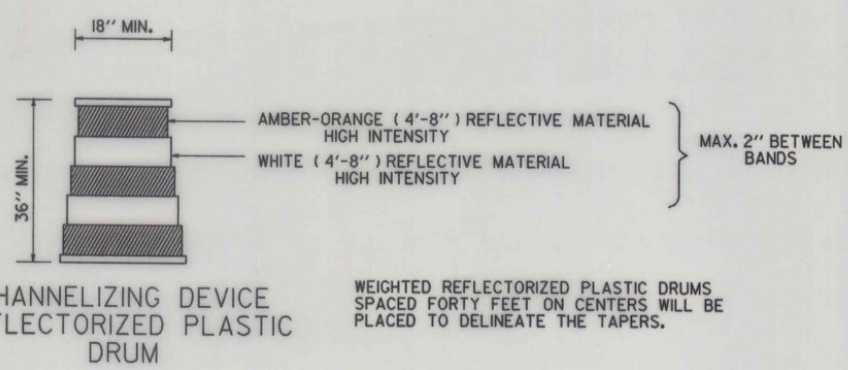


THE FLASHING ARROWBOARD SHALL BE MOUNTED ON A BREAKAWAY OR YIELDING SYSTEM

THE CONTRACTOR SHALL SUPPLY AND INSTALL THE INDICATED EQUIPMENT AND ALL NECESSARY HARDWARE SUCH AS BEACONS, WIRE (# 12 MIN.), CABLE, METER SOCKET, CONDUIT AND POLE RISER WITH WEATHER HEAD, POWER POLE JCT. BOX, CONDUIT AND MISC. MATERIAL REQUIRED TO MAKE THE BEACONS OPERATE. PAYMENT FOR THIS SYSTEM WILL BE FOR FLASHING BEACON, EACH, SIGNS AND POSTS WILL BE SEPARATE ITEMS. WIRE CONNECTIONS AT THE BASE OF THE SIGNPOST SHALL BE FUSED ON THE LOAD SIDE WITH A WATERTIGHT PLUG-IN TYPE CONNECTOR WHICH WILL DISCONNECT WITHOUT DAMAGE DURING A POST KNOCKDOWN. THE CONTRACTOR SHALL BE RESPONSIBLE FOR CONTACTING THE UTILITY COMPANY FOR INSTALLATION OF ALL POLES, SPAN WIRE, 500 WATT MERCURY VAPOR LUMINAIRE AND POWER SOURCE. ALL ELECTRICAL WORK SHALL BE DONE IN ACCORDANCE WITH THE REQUIREMENTS OF THE UTILITY COMPANY AND STANDARDS SET FORTH IN THE NATIONAL ELECTRICAL CODE. IF POLES ARE TO BE INSTALLED TO CARRY THE POWER SOURCE TO THE ADVANCE BEACON INSTALLATION ON THE "ROAD ENDS 1000 FT" SIGN, THE POLES SHALL BE PROVIDED AT THIS LOCATION. THE MAINTENANCE AND OPERATION OF THE BARRICADES, BEACONS, SIGNS, STREET LIGHT AND POWER SOURCE AND THE REMOVAL OF THE SAME SHALL BE THE RESPONSIBILITY OF THE STATE AFTER ACCEPTANCE OF THE PROJECT. ALL MATERIALS WITH THE EXCEPTION OF THE POLES AND STREET LIGHT SHALL BECOME THE PROPERTY OF THE STATE OF VERMONT UPON ACCEPTANCE OF THE PROJECT.

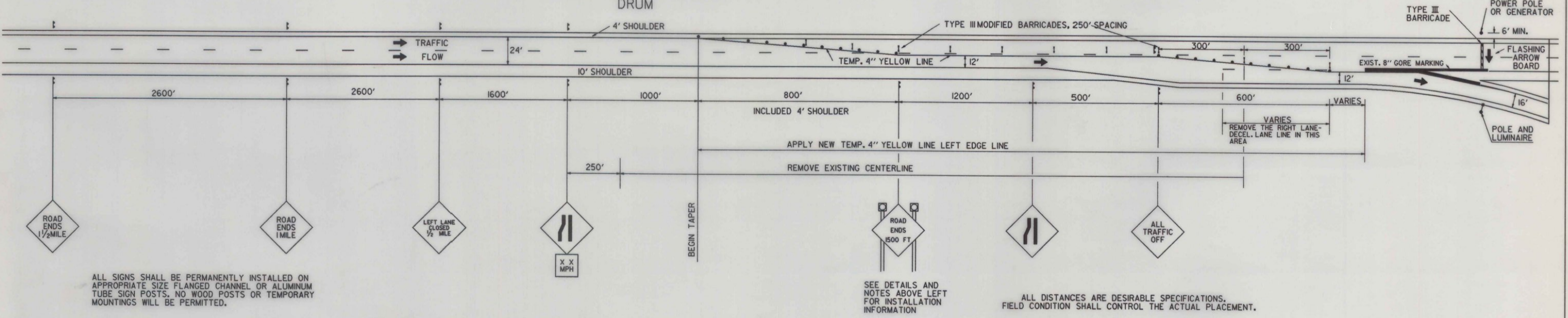
THE BEACONS TO BE USED OVERHEAD SHALL BE FURNISHED WITH HARDWARE FOR SPAN-WIRE MOUNTING. ALL FLASHING BEACONS, FLASHING MECHANISMS AND BEACON ACCESSORIES SHALL BE IN CONFORMANCE WITH STANDARD SPECIFICATION 752.07. ALL ELECTRICAL WIRING SHALL BE IN ELECTRICAL CONDUIT AND BE ADEQUATELY GROUNDED. A PERMIT AND INSPECTION ARE REQUIRED BY THE STATE ELECTRICAL INSPECTORS.

\* IN LEDGE CUT SECTION; DISTANCE FROM PAVEMENT TO POLE MAY BE MODIFIED TO NO LESS THAN 25' FROM PAVEMENT TO POLE.



**BARRICADE MATERIALS -**  
TYPE III BARRICADES AND TYPE III MODIFIED BARRICADES ON THIS SHEET SHALL COMPLY WITH STANDARD SHEET E-107A. ALL BARRICADES SHALL BE MAINTAINED IN A CLEAN AND LEGIBLE CONDITION SATISFACTORY TO THE ENGINEER. THEY SHALL BE COMPLETELY VISIBLE TO APPROACHING TRAFFIC AT ALL TIMES. DAMAGED, DEFACTED OR DIRTY BARRICADES SHALL BE REPAIRED, CLEANED OR REPLACED AS ORDERED BY THE ENGINEER.

**SIGNS - COLORS AND MATERIALS**  
THE SIZES OF SIGNS SHALL BE AS INDICATED. THEY SHALL HAVE REFLECTORIZED ORANGE BACKGROUND WITH BLACK TEXT AND BORDER, SIGN BASE MATERIAL SHALL BE AS SHOWN ON STD E-100. ALL REFLECTORIZED MATERIAL SHALL CONSIST OF ENCAPSULATED LENS REFLECTIVE SHEETING.



ALL SIGNS SHALL BE PERMANENTLY INSTALLED ON APPROPRIATE SIZE FLANGED CHANNEL OR ALUMINUM TUBE SIGN POSTS. NO WOOD POSTS OR TEMPORARY MOUNTINGS WILL BE PERMITTED.

SEE DETAILS AND NOTES ABOVE LEFT FOR INSTALLATION INFORMATION

ALL DISTANCES ARE DESIRABLE SPECIFICATIONS. FIELD CONDITION SHALL CONTROL THE ACTUAL PLACEMENT.

REVISIONS AND CORRECTIONS

APPROVED

SEPT. 10, 1987  
DATE

*David B. Kelley*  
CHIEF ENGINEER  
*Arthur J. Goss*  
DIRECTOR OF PLANNING  
AND PRE-CONSTRUCTION  
*S. B. MacArthur*  
TRAFFIC AND SAFETY ENGINEER

# TRAFFIC CONTROL DEVICES FOR TEMPORARY TERMINATION OF FREEWAY FACILITIES



# STANDARD E-109