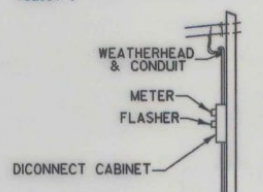
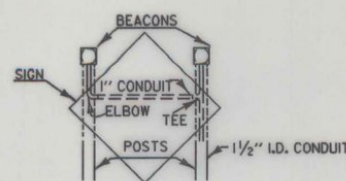


NOTE:
FLASHING BEACON POWER SOURCE
CONSISTING OF FLASHER, RADIO
INTERFERENCE FILTER, AND CIRCUIT
BREAKERS IN RAINIGHT CABINET.
ALL SHALL CONFORM TO SUB-SECTION
752.07.

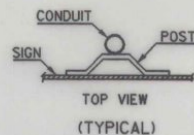


POWER POLE DETAIL

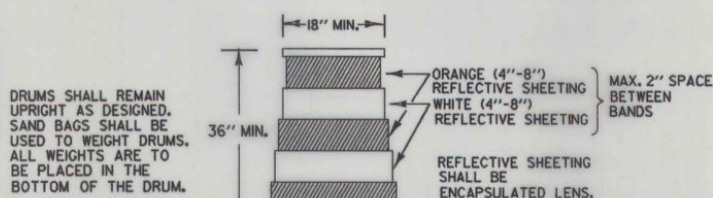
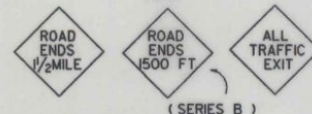
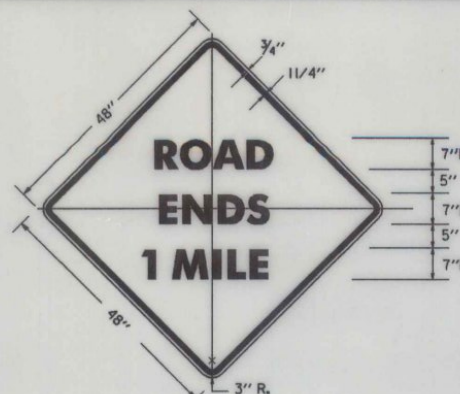


CONDUIT DETAILS
BETWEEN BEACONS,
BACK SIDE OF SIGN.

DOUBLE BEACON INSTALLATION

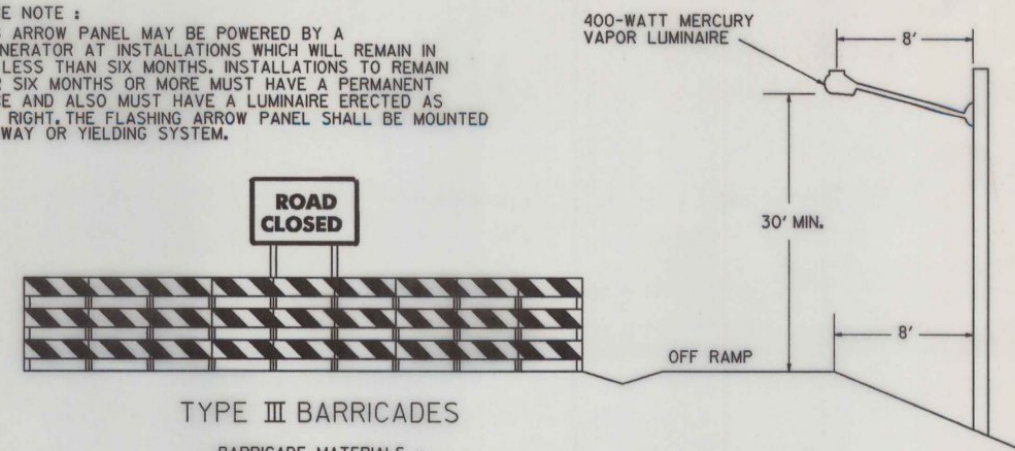


TOP VIEW
(TYPICAL)



REFLECTORIZED PLASTIC
DRUM

POWER SOURCE NOTE:
THE FLASHING ARROW PANEL MAY BE POWERED BY A
PORTABLE GENERATOR AT INSTALLATIONS WHICH WILL REMAIN IN
SERVICE FOR LESS THAN SIX MONTHS. INSTALLATIONS TO REMAIN
IN PLACE FOR SIX MONTHS OR MORE MUST HAVE A PERMANENT
POWER SOURCE AND ALSO MUST HAVE A LUMINAIRE ERRECTED AS
INDICATED AT RIGHT. THE FLASHING ARROW PANEL SHALL BE MOUNTED
ON A BREAKAWAY OR YIELDING SYSTEM.

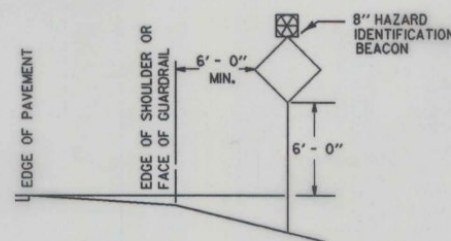


TYPE III BARRICADES

BARRICADE MATERIALS -
TYPE III BARRICADES ON THIS SHEET SHALL COMPLY WITH STANDARD SHEET E-107A.
ALL BARRICADES SHALL BE MAINTAINED IN A CLEAN CONDITION
SATISFACTORY TO THE ENGINEER. THEY SHALL BE COMPLETELY VISIBLE TO
APPROACHING TRAFFIC AT ALL TIMES.
DAMAGED, DEFACTED OR DIRTY BARRICADES SHALL BE REPAIRED,
CLEANED OR REPLACED AS ORDERED BY THE ENGINEER.

SIGNS - COLORS AND MATERIALS
THE SIZES OF SIGNS SHALL BE AS INDICATED. THEY SHALL HAVE REFLECTORIZED
ORANGE BACKGROUND WITH BLACK TEXT AND BORDER. SIGN BASE MATERIAL SHALL
BE AS SHOWN ON STD E-100.
ALL REFLECTORIZED MATERIAL SHALL CONSIST OF ENCAPSULATED LENS REFLECTIVE
SHEETING.

LUMINAIRE -
THE CONTRACTOR SHALL BE RESPONSIBLE FOR CONTACTING AND PAYMENT
TO THE UTILITY COMPANY FOR PROVIDING A POWER SOURCE ETC. FOR THE
ABOVE LUMINAIRE INSTALLATION. PAYMENT WILL BE AS SPECIFIED ON THE PLANS.



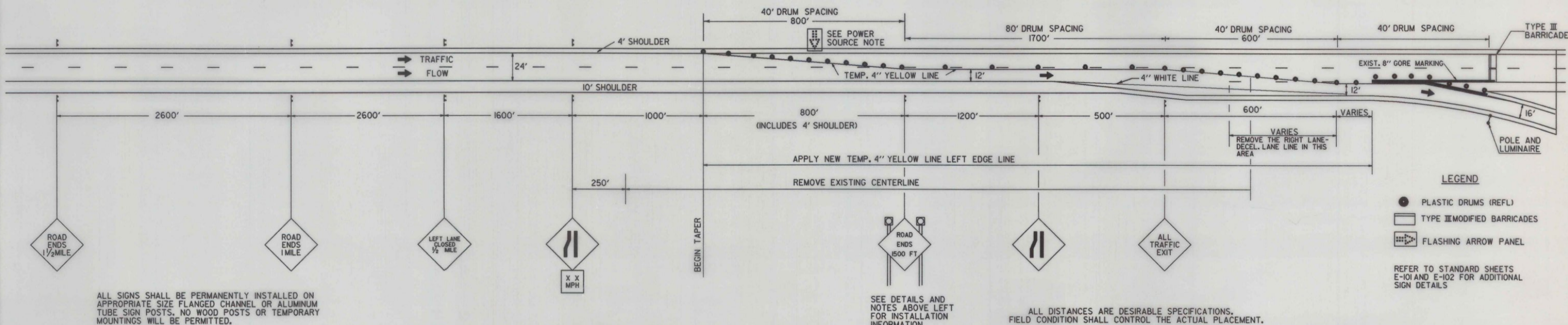
SIGN PLACEMENT DETAIL

NOTE:
BOTTOM OF BEACON TO BE A MIN.
8" - 0" & 12" - 0" ABOVE EDGE OF
PAVEMENT.

FOR URBAN AREA PLACEMENT
SEE APPROPRIATE STANDARD SHEETS

NOTE:
THE CONTRACTOR SHALL SUPPLY AND INSTALL THE INDICATED EQUIPMENT AND
ALL NECESSARY HARDWARE SUCH AS BEACONS, 3LB./FT. FLANGED CHANNEL POST,
WIRE (#12 MIN.), METER SOCKET (AND OTHER EQUIPMENT AS MENTIONED IN
POWER SOURCE NOTE), CONDUIT, POLE RISER WITH WEATHERHEAD, POWER DROP
POLE (IF REQUIRED), JUNCTION BOX, (IF REQUIRED) AND OTHER MISC. MATERIALS
AND HARDWARE TO MAKE THE BEACONS OPERATIONAL.
PAYMENT FOR THIS SYSTEM WILL BE SPECIFIED ON THE PLANS.
SOME TEMPORARY INSTALLATIONS MAY BE BETTER SERVED IF TWO POLES
WITH A SPAN WIRE BETWEEN AND BEACONS ARE ATTACHED OVER THE ROADWAY. PAYMENT
TO BE THE SAME AS FOR POST MOUNTED.
THE MAINTENANCE OF THE BARRICADES, BEACONS, SIGNS, STREET LIGHT,
POWER SOURCE AND THE REMOVAL OF SAME SHALL BE THE RESPONSIBILITY OF THE STATE
AFTER ACCEPTANCE OF THE PROJECT. THE POWER DROP POLE SHOULD BE 30' (25'
IN LEDGE CUT) FROM EDGE OF TRAVELLED WAY. A PERMIT AND INSPECTION ARE REQUIRED
BY THE STATE ELECTRICAL INSPECTOR.

HAZARD IDENTIFICATION BEACON INSTALLATION
FLANGED CHANNEL STEEL SIGN SUPPORT



REVISIONS AND CORRECTIONS
APRIL 29, 1988 FHWA COMMENTS

APPROVED
SEPT. 10, 1987
DATE
David B. Kelley
CHIEF ENGINEER
Arthur Stov
DIRECTOR OF PLANNING
AND PRE-CONSTRUCTION
Gordon B. MacArthur
TRAFFIC AND SAFETY ENGINEER

TRAFFIC CONTROL DEVICES
FOR TEMPORARY TERMINATION
OF FREEWAY FACILITIES



STANDARD
E-109