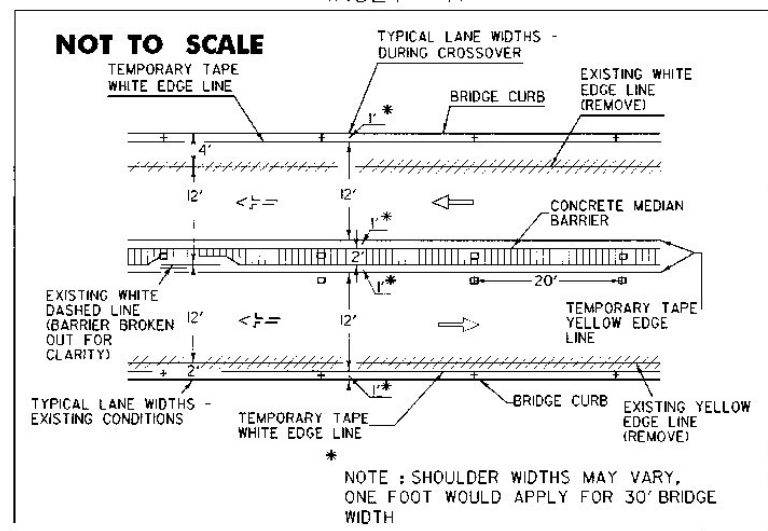
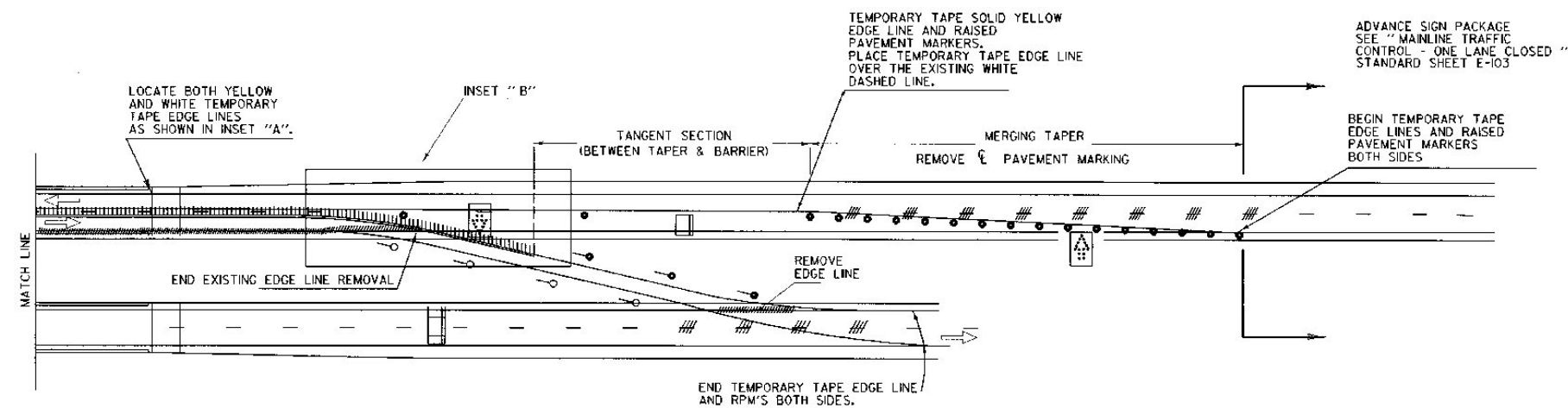
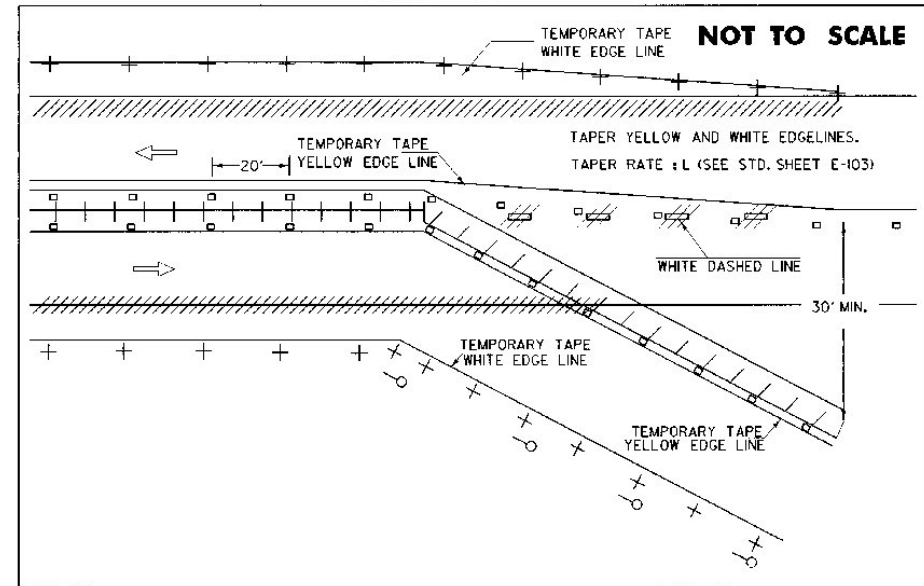


INSET "A"



INSET "B"



LEGEND

- /// - PAVEMENT MARKING REMOVAL
- - REFLECTORIZED PLASTIC DRUM
- - TYPE I DELINEATOR (YELLOW)
- - TYPE I DELINEATOR (WHITE)
- ||||| - CONCRETE MEDIAN BARRIER
- ≡ - TYPE III BARRICADE
- ⚡ - FLASHING ARROW PANEL
- ⊕ - WHITE RAISED PAVEMENT MARKER
- ⊙ - YELLOW RAISED PAVEMENT MARKER
- ← - ORIGINAL DIRECTION OF TRAFFIC FLOW
- - TEMPORARY DIRECTION OF TRAFFIC FLOW

NOTES

- 1) THE TEMPORARY TAPE PAVEMENT MARKINGS SHALL BE OF A TYPE WHICH CAN BE COMPLETELY REMOVED AFTER THE PROJECT WITHOUT SCARRING OR MARKING THE PAVEMENT SURFACE. PAYMENT FOR THE TAPE MARKINGS SHALL BE PAID FOR UNDER THE APPROPRIATE ITEM NUMBERS.
- 2) PAVEMENT MARKING REMOVALS SHALL BE PAID FOR UNDER THE APPROPRIATE ITEM NUMBER. TEMPORARY TAPE REMOVAL IS NOT PAID FOR UNDER THE REMOVAL ITEM, IT IS SUBSIDIARY TO THE TAPE ITEM.
- 3) THE RAISED PAVEMENT MARKINGS (RPM'S) SHALL BE OF A TYPE WHICH CAN BE EASILY REMOVED AND THEY SHALL BE PLACED TOWARDS THE OUTSIDE OF THE TEMPORARY TAPE PAVEMENT MARKINGS. THE RPM'S SHALL BE SPACED AT 20 FT INTERVALS. THE RPM'S ARE TO BE PAID UNDER THE ITEM TEMPORARY RAISED PAVEMENT MARKINGS. IF RPM'S ARE BUILT INTO AND INCLUDED AS A PART OF THE TEMPORARY TAPE PAVEMENT MARKINGS, THEN THE COST OF THE RAISED MARKERS SHALL BE CONSIDERED AS PART OF THE TEMPORARY PAVEMENT MARKING ITEM AND SEPERATE RPM'S ARE NOT REQUIRED.
- 4) TAPE OR PAINT SHALL NOT BE ALLOWED ON THE SIDE OF THE CONCRETE MEDIAN BARRIER.

NOT TO SCALE

OTHER STDS. E-103 E-107A
REQUIRED: E-104

REVISIONS AND CORRECTIONS
 JAN 23, 1989 - DATE OF ORIGINAL SSEE
 OCT 21, 1992 CHANGED TAPER LAYOUTS PER STDS '04
 MNOR REVISIONS
 AUG 08, 1995 - MINOR NOTE REVISIONS

APPROVED
Stanford D. MacArthur
 DIRECTOR OF ENGINEERING

PAVEMENT MARKING DETAILS

DIVIDED HIGHWAY

ONE ROADWAY CLOSED



STANDARD

E-104A

APPROVED FOR THIS PROJECT
 AND/OR DESIGN IMPLEMENTATION.
 FHWA FINAL APPROVAL PENDING.

David A. Roer
 TRAFFIC AND SAFETY ENGINEER