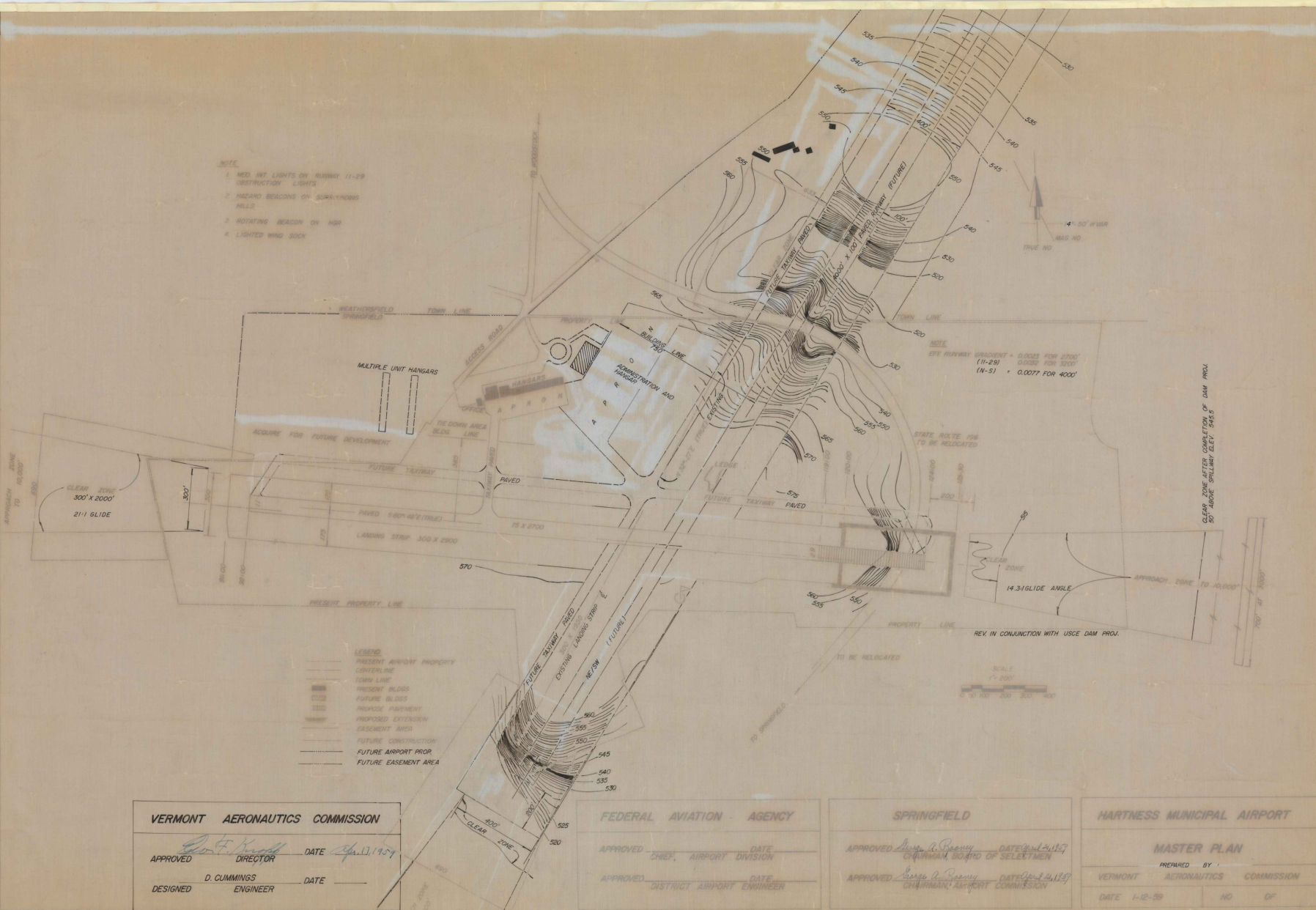


- NOTES
1. CONTOURS WERE OBTAINED FROM PREVIOUS AIRPORT RELATED LAYOUTS AND FROM UNITED STATES COAST & GEODETIC SURVEY SHEETS.
 2. APPROXIMATE PROPERTY LINES FOR ADJACENT LANDS PROVIDED TO VAB. BY OTHERS — BOUNDARY LINES SHOULD BE SUBSTANTIATED BY AN ACCURATED FIELD SURVEY

SPRINGFIELD STATE
 AIRPORT (HARTNESS)
 NORTH SPRINGFIELD, VT.
 LAYOUT PLAN
 ADJACENT PROPERTY
 VERMONT AERONAUTICS BOARD
 G. SHEPARDSON - AERPT ENGR.
 SEPT '72

- NOTE
1. MID INT LIGHTS ON RUNWAY 11-29
OBSTRUCTION LIGHTS
 2. HAZARD BEACONS ON SURROUNDING HILLS
 3. ROTATING BEACON ON HQR
 4. LIGHTED WIND SOCK



VERMONT AERONAUTICS COMMISSION

APPROVED *[Signature]* DATE *4/11/59*
DIRECTOR

DESIGNED D. CUMMINGS DATE _____
ENGINEER

FEDERAL AVIATION AGENCY

APPROVED _____ DATE _____
CHIEF, AIRPORT DIVISION

APPROVED _____ DATE _____
DISTRICT AIRPORT ENGINEER

SPRINGFIELD

APPROVED *[Signature]* DATE *4/11/59*
CHAIRMAN BOARD OF SELECTMEN

APPROVED *[Signature]* DATE *4/11/59*
CHAIRMAN AIRPORT COMMISSION

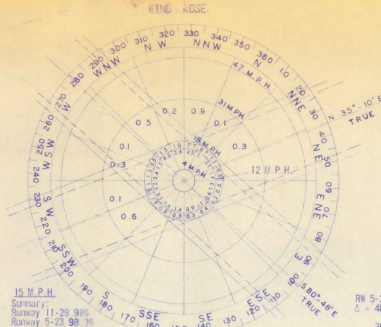
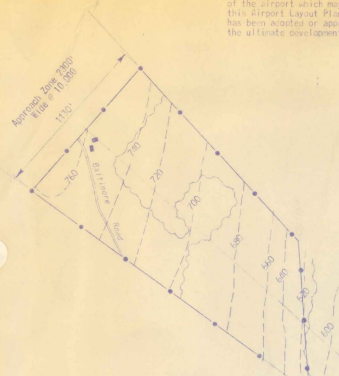
HARTNESS MUNICIPAL AIRPORT

MASTER PLAN

PREPARED BY VERMONT AERONAUTICS COMMISSION

DATE 1-12-59 NO. _____ OF _____

A diligent search has been made by an official of the Bureau to ascertain whether or not any plans have been adopted or approved either by the State, County, other municipalities or public agencies within a 2.5 mile radius of the airport which may affect the development shown on this Airport layout plan, and it was found that no plan has been adopted or approved which is inconsistent with the ultimate development above.



12 M.P.H.

Summary	11-29	93.2%
Runway 5-23	95.1%	
Combined AWS	96.8%	

15 M.P.H.

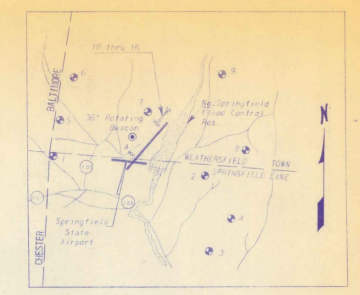
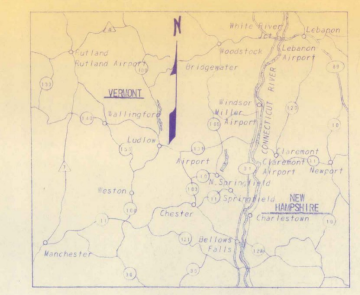
Summary	11-29	98%
Runway 5-23	99.3%	
Combined AWS	99.8%	

35 M.P.H.

Summary	11-29	98%
Runway 5-23	99.3%	
Combined AWS	99.8%	

100.0%

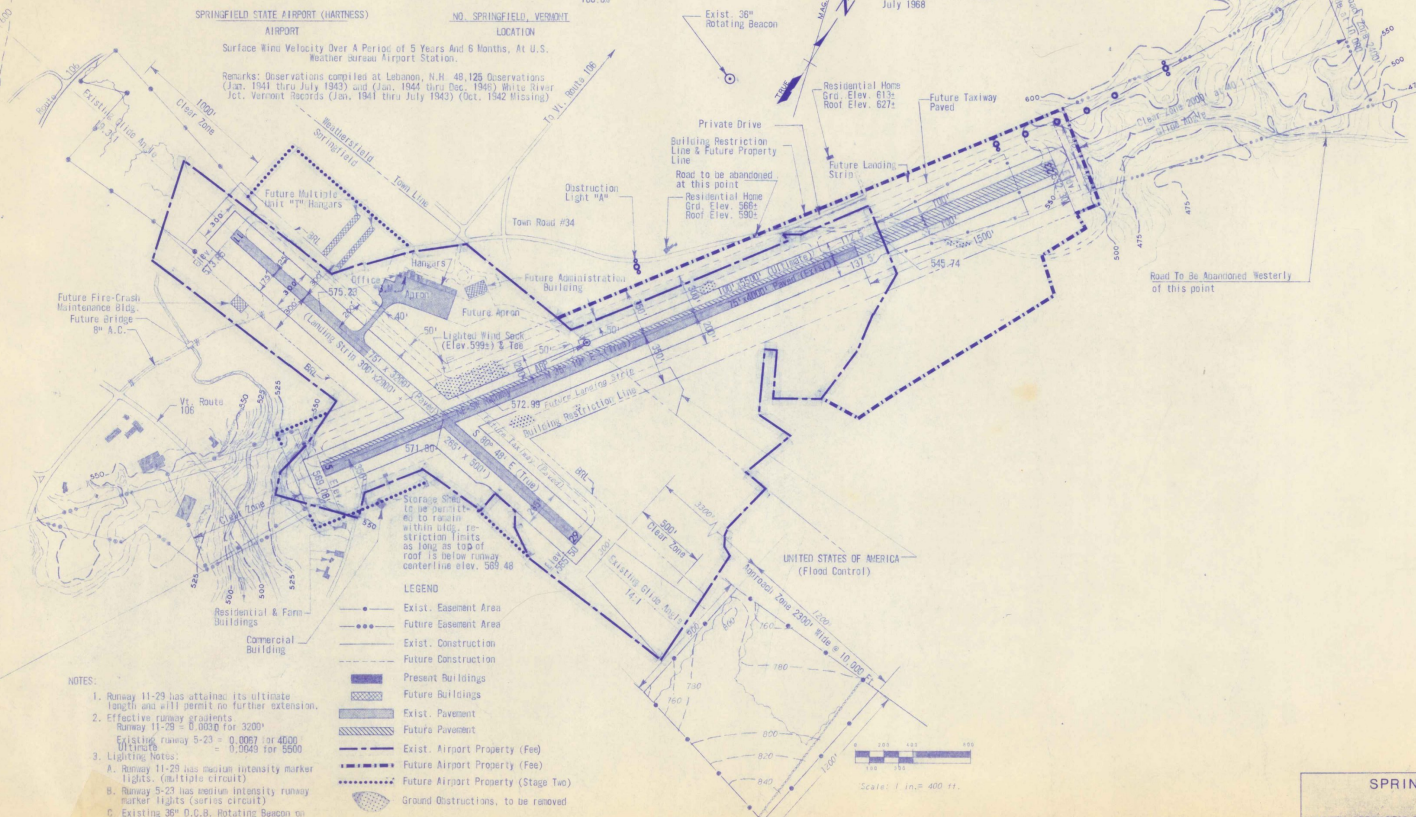
* Bench Mark
Top Base Plate - Hanger Column
Elev. 575.15 (M.S.L. Datum)



SPRINGFIELD STATE AIRPORT (HARTNESS) AIRPORT LOCATION
Surface Wind Velocity Over A Period of 5 Years And 6 Months, At U.S. Weather Bureau Station.

Remarks: Observations compiled at Lebanon, N.H. 48, 125 Observations (Jan. 1941 thru July 1943) and (Jan. 1944 thru Dec. 1946) White River Mt. Vermont records (Jan. 1941 thru July 1943) (Oct. 1942 Missing)

Note
Declination determined from
Aeronautical Chart dated
July 1968



- NOTES:
- Runway 11-29 has attained its ultimate length and will permit no further extension.
 - Effective runway straightens:
Runway 11-29 = 0.0030 for 3000'
Existing runway 5-23 = 0.0027 for 4000'
Ultimate = 0.0045 for 5500'
 - Lighting Notes:
A. Runway 11-29 has median intensity marker lights. (multiple circuit)
B. Runway 5-23 has median intensity runway marker lights (single circuit)
C. Existing 36" O.C.B. Rotating Beacon on 57' steel tower on hill approx. 3000' NE of runway intersection.
D. 9 hazard lights on surrounding hills.
E. Lighted wind sock and wind tee North of runway intersection.
 - General:
Airport Elev. 575.23
Airport Reference Point (ARP)
Lat. N 43° 20' - 30"
Long. W 72° 31' - 04"
Class - Large Class
General Utility
(Business Jet)

- LEGEND
- Exist. Easement Area
 - Future Easement Area
 - Exist. Construction
 - Future Construction
 - Present Buildings
 - Future Buildings
 - Exist. Pavement
 - Future Pavement
 - Exist. Airport Property (Fee)
 - Future Airport Property (Fee)
 - Future Airport Property (Stage Two)
 - Ground Obstructions, to be removed

U.S. DEPT. OF TRANSPORTATION
FEDERAL AVIATION ADMINISTRATION

APPROVED _____ CHIEF, AIRPORTS BRANCH
DATE _____

VERMONT AERONAUTICS BOARD

APPROVED _____ COMMISSIONER
DATE _____

APPROVED _____ ENGINEER
DATE _____

DATE	REVISION	BY

SPRINGFIELD STATE AIRPORT (HARTNESS)
NORTH SPRINGFIELD, VERMONT

AIRPORT LAYOUT PLAN

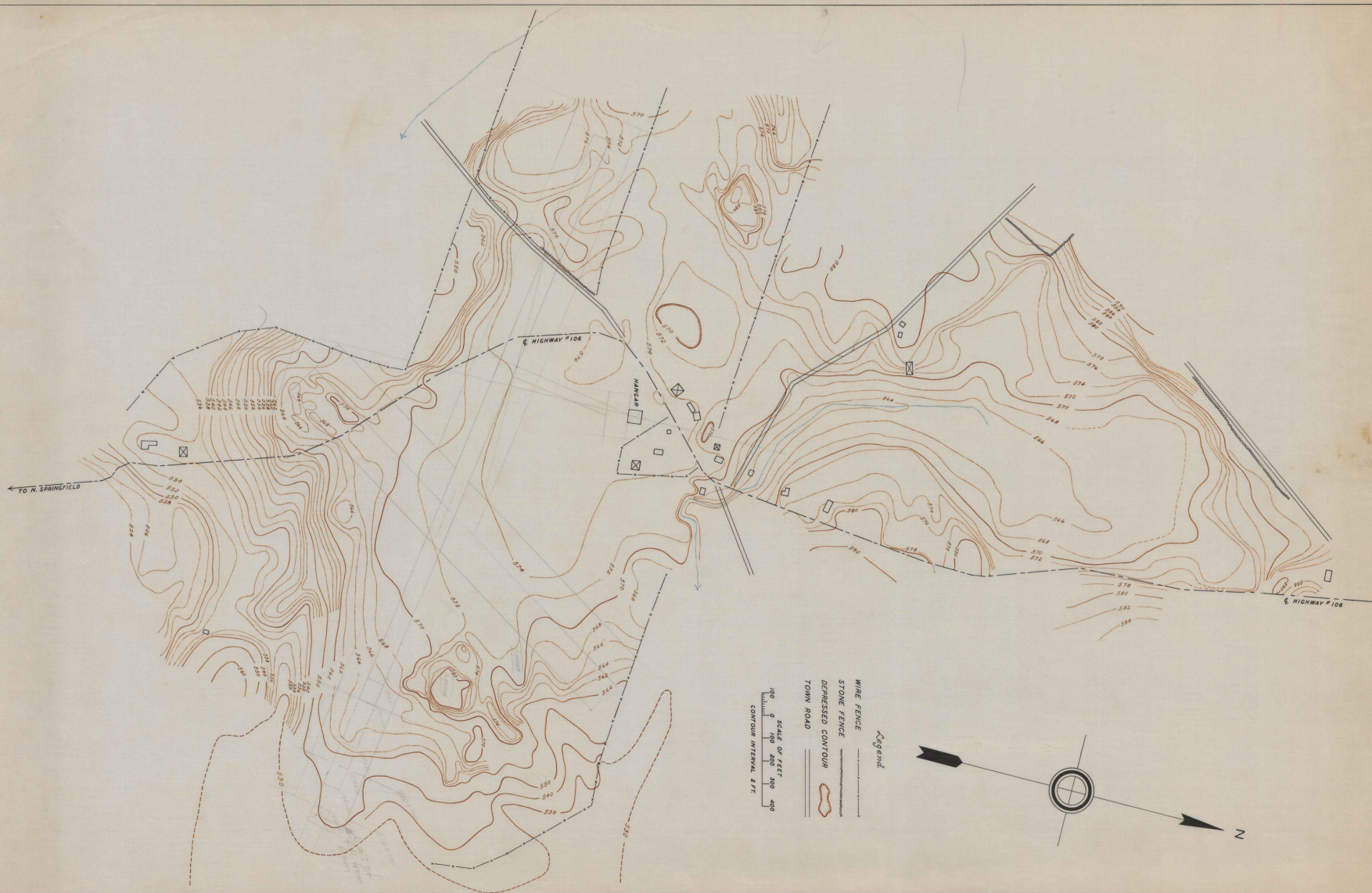
DUFRESNE-HENRY
Engineering Corporation
REGISTERED PROFESSIONAL ENGINEERS
CIVIL & SANITARY ENGINEERS

Scale: 1" = 400 ft.

Sheet 1 of 2

MAY 7, 1968

TOPOGRAPHIC MAP
OF
SPRINGFIELD AIRPORT AREA
VERMONT STATE PLANNING BOARD
1939



Legend

- WIRE FENCE
- STONE FENCE
- DEPRESSED CONTOUR
- TOWN ROAD

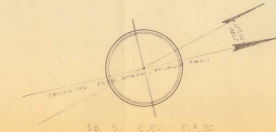
SCALE OF FEET: 100 200 300 400
CONTOUR INTERVAL: 2 FT.





1	5	52.97	512.97
2	6	47.05	477.05
3	7	56.36	566.36
4	8	57.17	577.17
5	9	54.17	544.17
6	10	55.20	555.20
7	11	53.76	533.76
8	12	54.30	544.30
9	13	51.25	511.25
10	14	50.58	504.58
11	15	52.11	522.11
12	16	53.11	533.11

REVISION	DATE	DESCRIPTION
CORPS OF ENGINEERS, U. S. ARMY OFFICE OF THE DIVISION ENGINEER NEW ENGLAND DIVISION BOSTON, MASS.		
DR. BY	TR. BY	CK. BY
CONNECTICUT RIVER CANAL NORTH SPRINGFIELD CANAL BLACK RIVER SURVEY AND REPAIR		
PROJECT ENGINEER		
SUPERVISOR		
NORTH SPRINGFIELD		

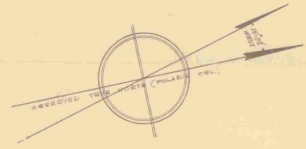


SB 5 85.7 87.00
 SB 7 85.7 40.00

REVISION	DATE	DESCRIPTION
		CORPS OF ENGINEERS, U. S. ARMY OFFICE OF THE SURVEY ENGINEER NEW ENGLAND DIVISION BOSTON, MASS.
		CONNECTICUT RIVER DAM SITE
		NORTH SPRINGFIELD DAM SITE
		BLACK RIVER
		SURVEY RECORD
		NORTH SPRINGFIELD



S. 8. 3 ELEV. 552.26'
 S. 8. 4 " 562.11'
 S. 8. 6 " 512.97'



REVISION	DATE	DESCRIPTION	BY
CORPS OF ENGINEERS U. S. ARMY OFFICE OF THE DIVISION ENGINEER NEW ENGLAND DIVISION BOSTON, MASS.			
DR. BY J. A. R.	TR. BY J. A. R.	CK. BY S. A. R.	
CONNECTICUT RIVER BASIN NORTH SPRINGFIELD DAMSITE. BLACK RIVER SURVEY RECORD.			
CHIEF ENGINEERING SECTION SUBMITTED BY CHIEF PLANNING SECTION APPROVED			VERMONT. DATE
CHIEF ENGINEERING DIV.		COL. C. E.	DIVISION ENGINEER
DRAWING		SCALE	DATE
CONSULTING ENGINEER		DRAWING NUMBER	

