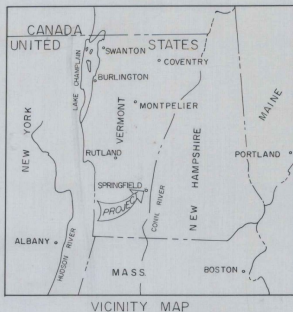


ADAP PROJECT NO. 5-50-0016-03

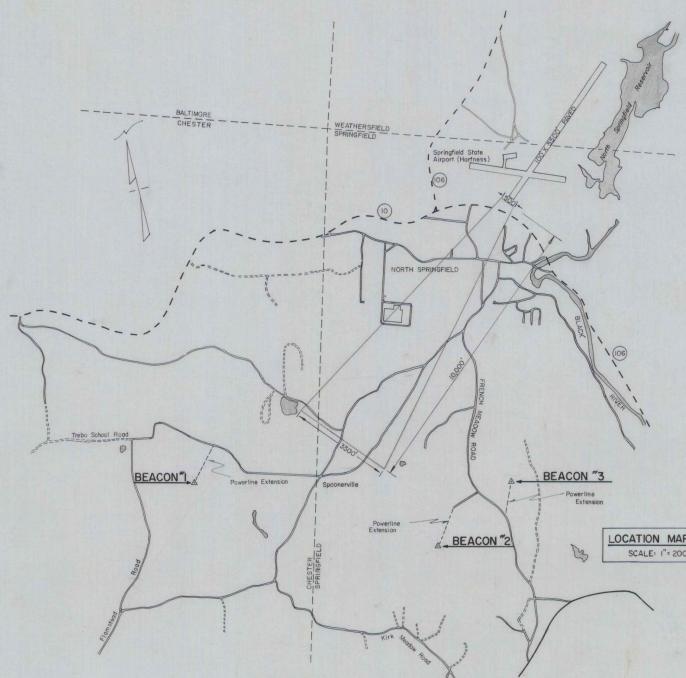
# SPRINGFIELD STATE AIRPORT SPRINGFIELD, VERMONT

CONTRACT 1 OF 2

## INSTALLATION OF HAZARD BEACONS { TO INCLUDE POWER LINES }



INDEX	
SHEET NO.	DESCRIPTION
1	TITLE SHEET
2	POWERLINE & BEACON LOCATIONS
3	DETAILS



REVISIONS	
DESCRIPTION	DATE

U.S. DEPARTMENT OF TRANSPORTATION  
FEDERAL AVIATION ADMINISTRATION

APPROVED \_\_\_\_\_ DATE \_\_\_\_\_  
CHIEF ENGINEERING BRANCH  
AIRPORTS DIVISION

SPRINGFIELD STATE AIRPORT  
SPRINGFIELD, VERMONT

DEPARTMENT OF AERONAUTICS

APPROVED \_\_\_\_\_ DATE \_\_\_\_\_  
COMMISSIONER  
APPROVED \_\_\_\_\_ DATE \_\_\_\_\_  
AIRPORT ENGR.

STATE OF VERMONT  
AGENCY OF TRANSPORTATION  
DEPARTMENT OF AERONAUTICS

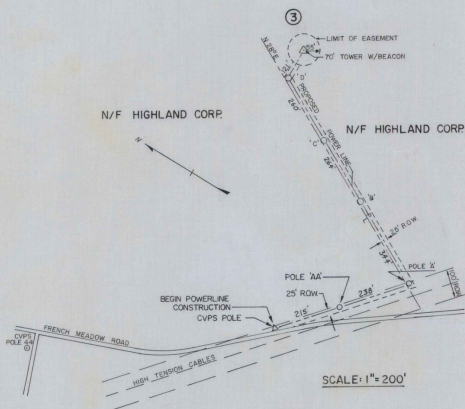
MONTPELIER, VERMONT

VAIL O. LEACH - ENGR.  
DATE -

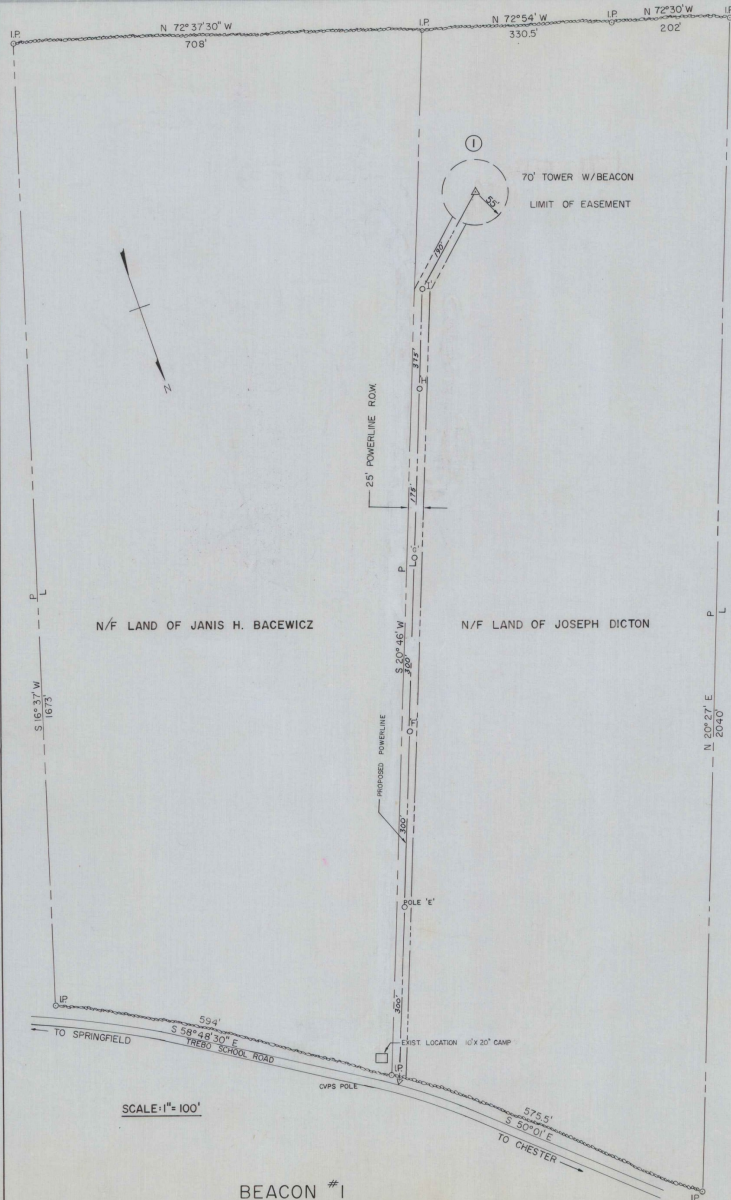
AS BUILT PLANS  
I hereby certify that all the construction required by this set of drawings has been accomplished as indicated herein.  
By *Michael J. Fitch* Project Engineer  
Date 1-22-90

NOTES

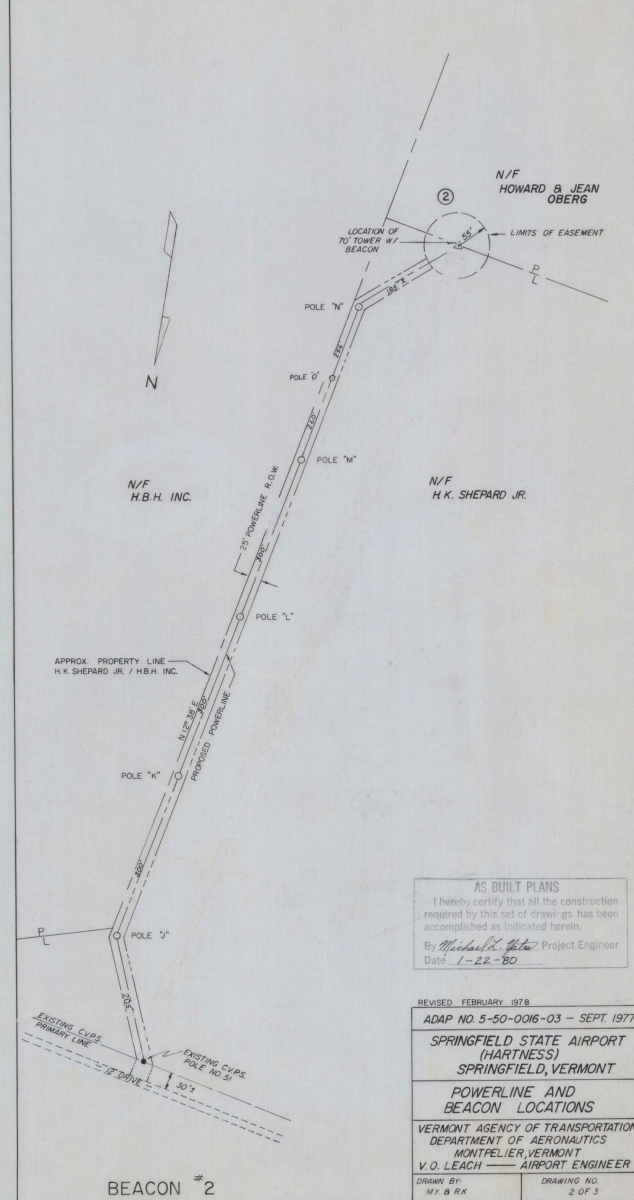
- 1 CVPS POLE HAVE METER & DISCONNECT SWITCH SUPPLIED BY CONTRACTOR  
TRANSFORMER SUPPLIED BY CVPS.
- 2 POLES GUYED AS NECESSARY.
- 3 ALL NEW SERVICE 120V SECONDARY  
USE 1/0 6201 POLY (TREE WIRE) AS LEAD  
USE 1/0 BARE NEUTRAL
- 4 NEW POWERLINES INSTALLED WITHIN R.O.W. AS DIRECTED BY THE ENGINEER
- 5 PROPERTY LINES (WESTERLY EDGES OF POWERLINE R.O.W.) ARE BLAZED ON HIGHLAND CORP & BACEWICZ'S PROPERTY. POLES LOCATED APPROXIMATELY 12.5' FROM P.V.L. POWERLINE LOCATION HAS BEEN FLAGGED ON SHEPARD'S PROPERTY. EXACT LOCATIONS OF POLES STAKED IN THE FIELD AFTER R.O.W. CLEARING HAS BEEN ACCOMPLISHED.



BEACON # 3



BEACON # 1



BEACON # 2

AS BUILT PLANS  
I hereby certify that all the construction required by this set of drawings has been accomplished as indicated herein.  
By *Michael R. Gatto* Project Engineer  
Date 1-22-80

REVISED FEBRUARY 1978  
ADAP NO. 5-50-0016-03 - SEPT 1977  
SPRINGFIELD STATE AIRPORT  
(HARTNESS)  
SPRINGFIELD, VERMONT  
POWERLINE AND  
BEACON LOCATIONS  
VERMONT AGENCY OF TRANSPORTATION  
DEPARTMENT OF AERONAUTICS  
MONTPELIER, VERMONT  
V.O. LEACH - AIRPORT ENGINEER  
DRAWN BY: M.V. & R.K. DRAWING NO. 2 OF 3

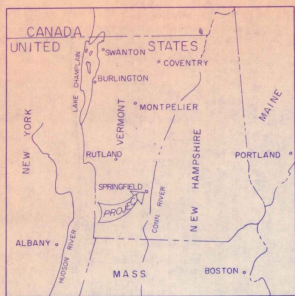


ADAP PROJECT NO. 5-50-0016-03

# SPRINGFIELD STATE AIRPORT SPRINGFIELD, VERMONT

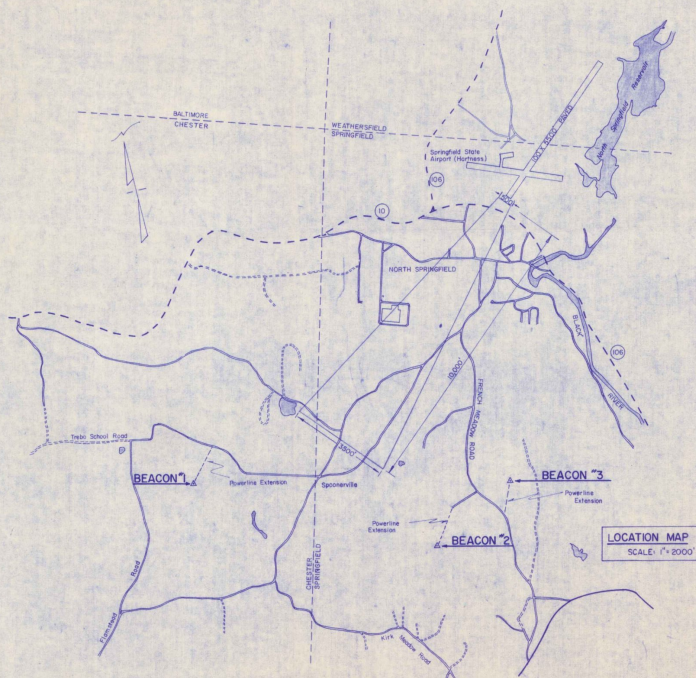
CONTRACT 1 OF 2

## INSTALLATION OF HAZARD BEACONS { TO INCLUDE POWER LINES }



VICINITY MAP

INDEX	
SHEET NO.	DESCRIPTION
1	TITLE SHEET
2	POWERLINE & BEACON LOCATIONS
3	DETAILS



LOCATION MAP  
SCALE: 1" = 2000'

These plans have been reviewed and are acceptable to the State.  
*James A. Doherty*  
DATE: FEB 25 1981

REVISIONS	
DESCRIPTION	DATE

U.S. DEPARTMENT OF TRANSPORTATION  
FEDERAL AVIATION ADMINISTRATION

APPROVED: \_\_\_\_\_ DATE \_\_\_\_\_  
CHIEF ENGINEERING BRANCH  
AIRPORTS DIVISION

SPRINGFIELD STATE AIRPORT  
SPRINGFIELD, VERMONT  
DEPARTMENT OF AERONAUTICS

APPROVED: \_\_\_\_\_ DATE \_\_\_\_\_  
COMMISSIONER  
APPROVED: \_\_\_\_\_ DATE \_\_\_\_\_  
AIRPORT ENGR.

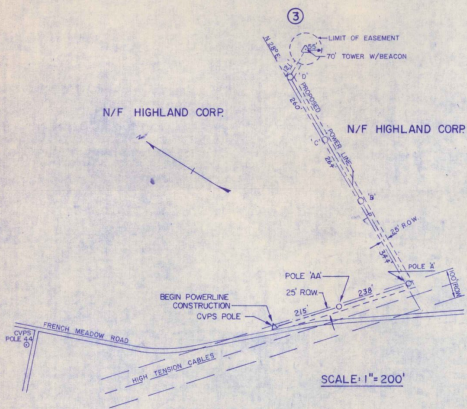
STATE OF VERMONT  
AGENCY OF TRANSPORTATION  
DEPARTMENT OF AERONAUTICS  
MONTPELIER, VERMONT

VAIL O. LEACH -- ENGR.  
DATE --

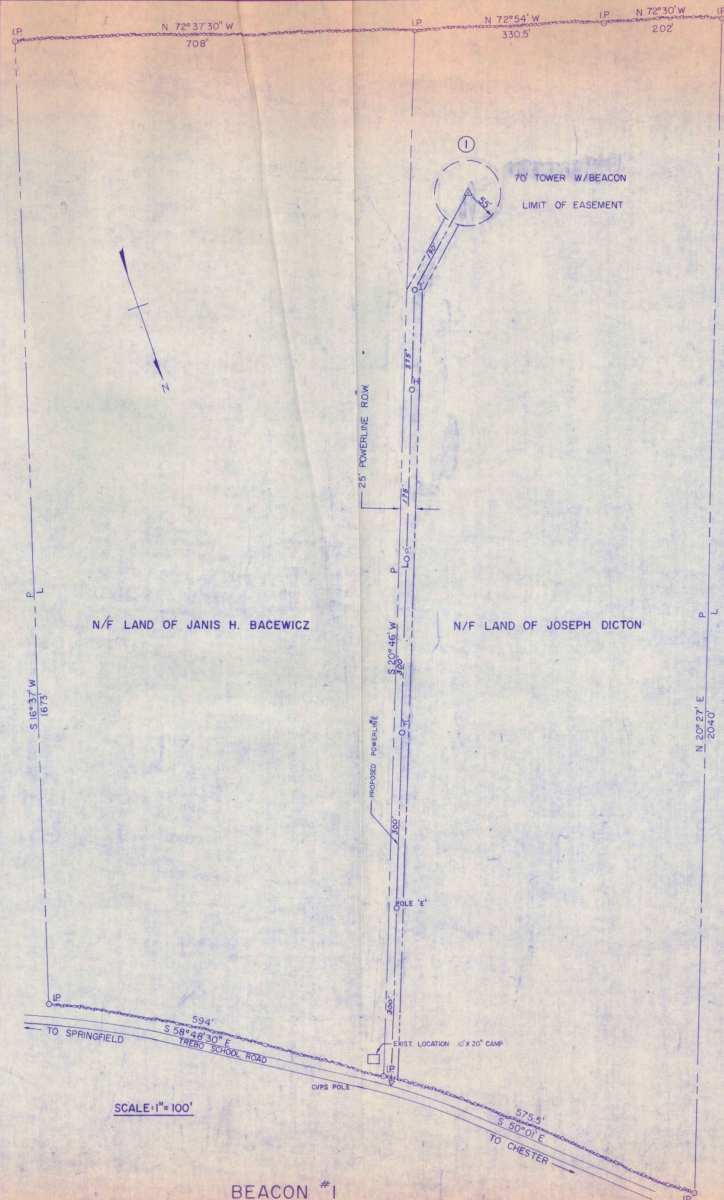
AS BUILT PLANS  
I hereby certify that all the construction required by this set of drawings has been accomplished as indicated hereon.  
By: *Michael H. Gledhill* Project Engineer  
Date: 1-22-80

NOTES:

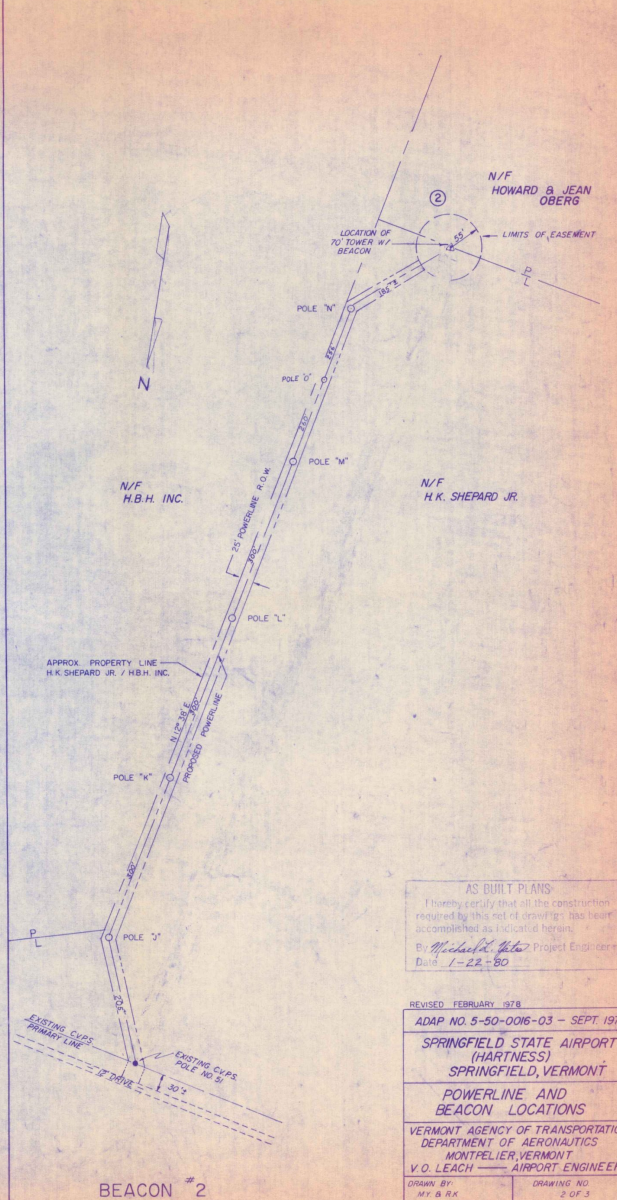
- 1 CVPS POLE HAVE METER & DISCONNECT SWITCH SUPPLIED BY CONTRACTOR. TRANSFORMER SUPPLIED BY CVPS.
- 2 POLES GUYED AS NECESSARY.
- 3 ALL NEW SERVICE 120V SECONDARY. USE 1/0 6201 POLY (TREE WIRE) AS LEAD. USE 1/0 BARE NEUTRAL.
- 4 NEW POWERLINES INSTALLED WITHIN ROW AS DIRECTED BY THE ENGINEER.
- 5 PROPERTY LINES (WESTERLY EDGES OF POWERLINE ROW) ARE BLAZED ON HIGHLAND CORP & BACEWICZ'S PROPERTY. POLES LOCATED APPROXIMATELY 12.5' FROM P.V.L. POWERLINE LOCATION HAS BEEN FLAGGED ON SHEPARD'S PROPERTY. EXACT LOCATIONS OF POLES STAKED IN THE FIELD AFTER ROW CLEARING HAS BEEN ACCOMPLISHED.



BEACON # 3



BEACON # 1



BEACON # 2

AS BUILT PLANS  
I hereby certify that all the construction required by this set of drawings has been accomplished as indicated herein.  
By: *Michael J. Kato* Project Engineer  
Date: 1-22-90

REVISED FEBRUARY 1978
ADAP NO. 5-50-0016-03 - SEPT. 1977
SPRINGFIELD STATE AIRPORT (HARTNESS) SPRINGFIELD, VERMONT
POWERLINE AND BEACON LOCATIONS
VERMONT AGENCY OF TRANSPORTATION DEPARTMENT OF AERONAUTICS MONTPELLIER, VERMONT
V. O. LEACH AIRPORT ENGINEER
DRAWN BY: M.Y. & R.K.
DRAWING NO. 2 OF 3

