

SAVAGE ISLAND
 T. RIVIER (CROSS)
 VERMONT AERO BD
 Cummins P.E. #1566



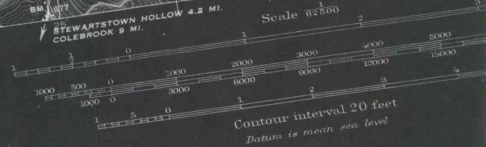
Topography by D.H. Watson, S.E. Clement and F.R. Swearingen
 Surveyed in 1925

ROAD CLASSIFICATION

Heavy-duty ——— 4 LANE 16 LANE Light-duty ———
 Medium-duty ——— 4 LANE 16 LANE Unimproved dirt ———

U.S. Route State Route

APPROXIMATE MEAN ELEVATION, 1925

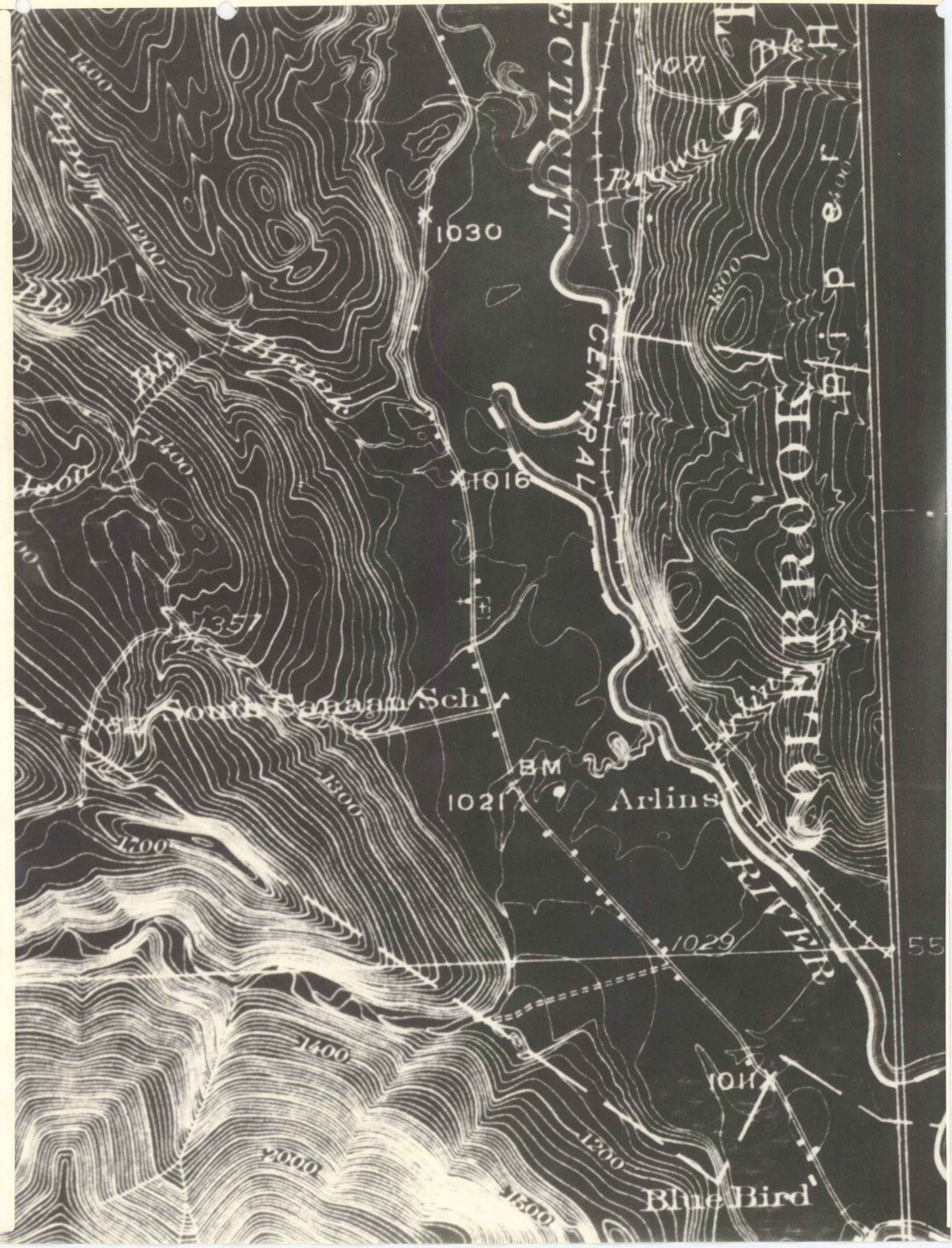


FOR SALE BY U. S. GEOLOGICAL SURVEY, WASHINGTON 25, D. C.
 A FOLDER DESCRIBING TOPOGRAPHIC MAPS AND SYMBOLS IS AVAILABLE ON

1" = 62500' 130%

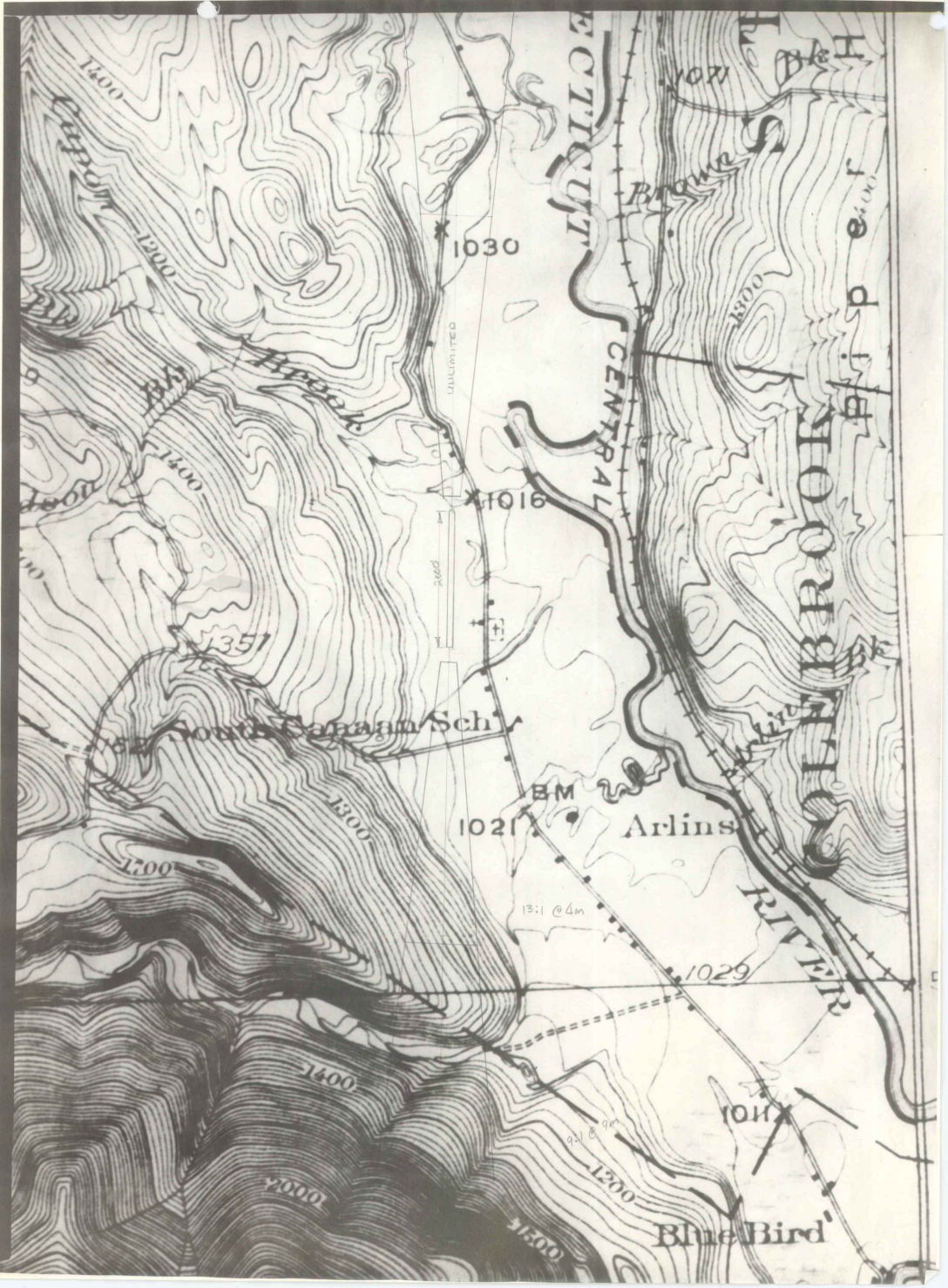


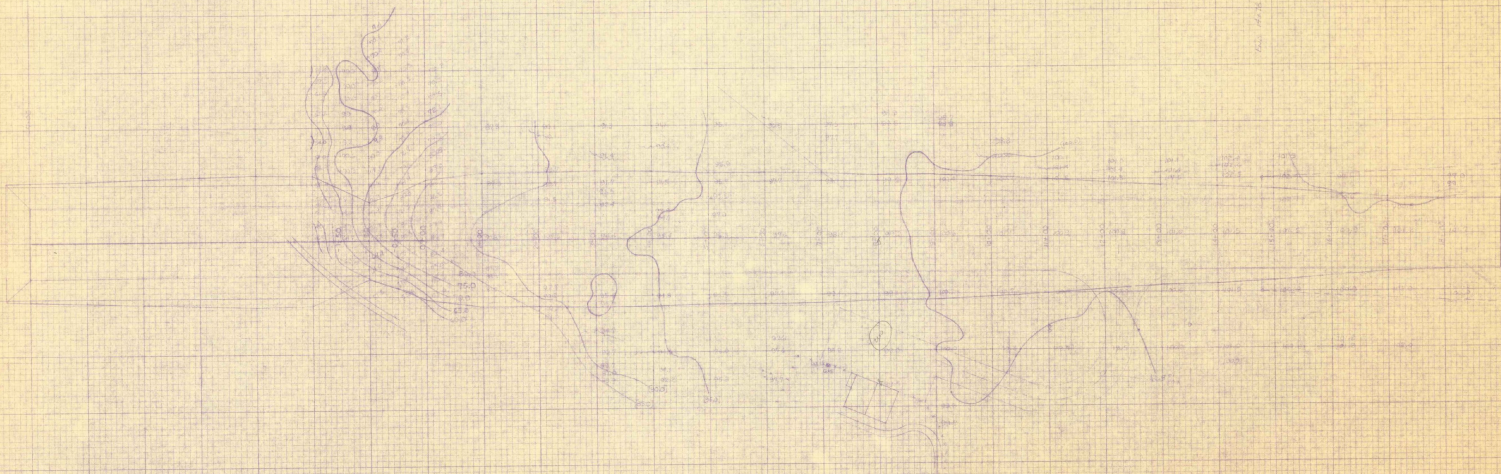
1" = 1000' 500 %

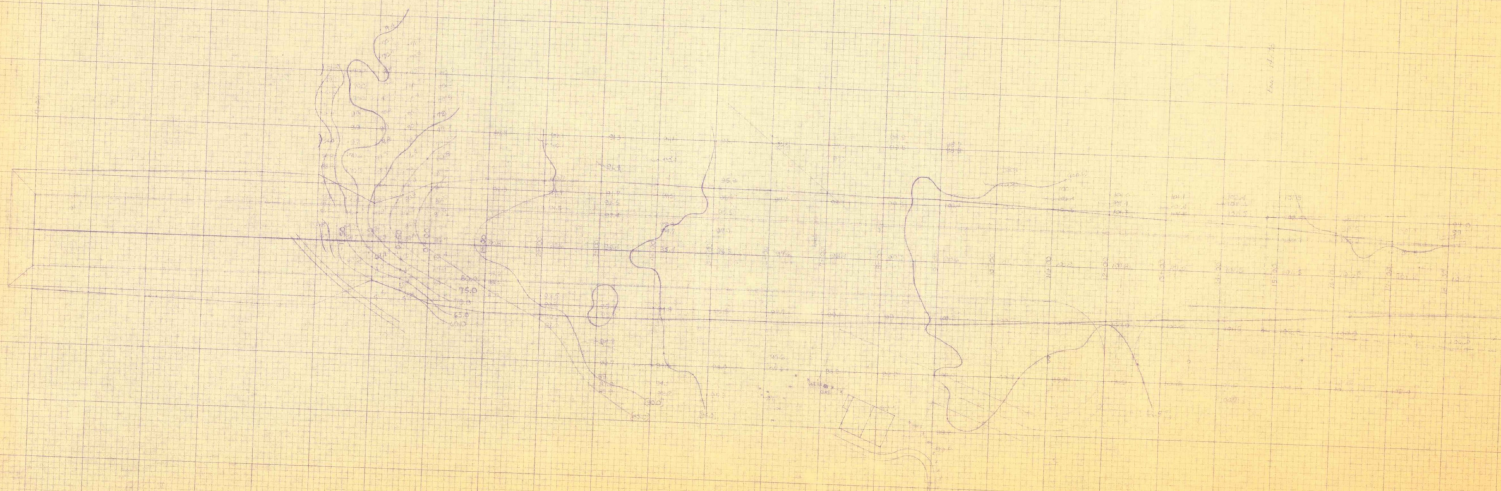


CANAAN

1" = 1000'
Scale







NOTES: SEE DRAWING IN CASE NO. 1000

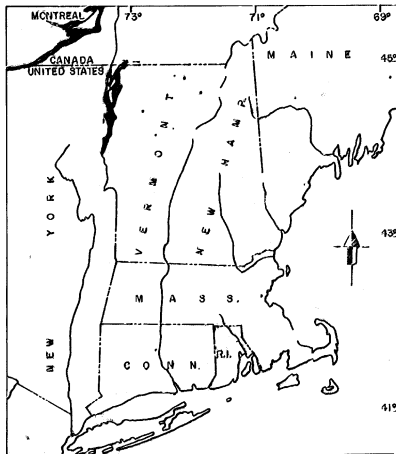
EAST

NOTES: SEE DRAWING IN CASE NO. 1000

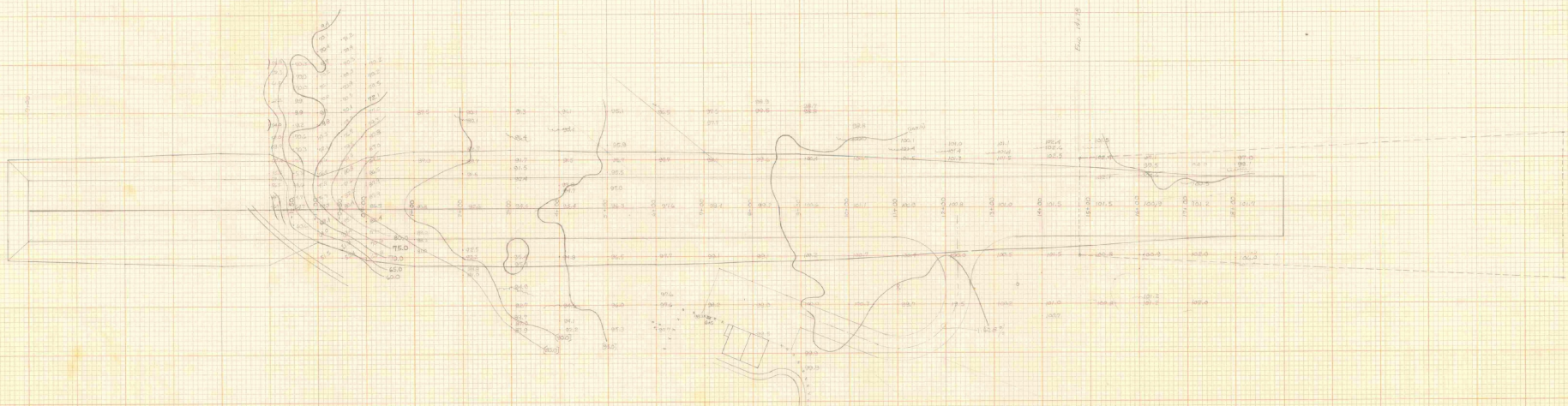
NOTES: SEE DRAWING IN CASE NO. 1000

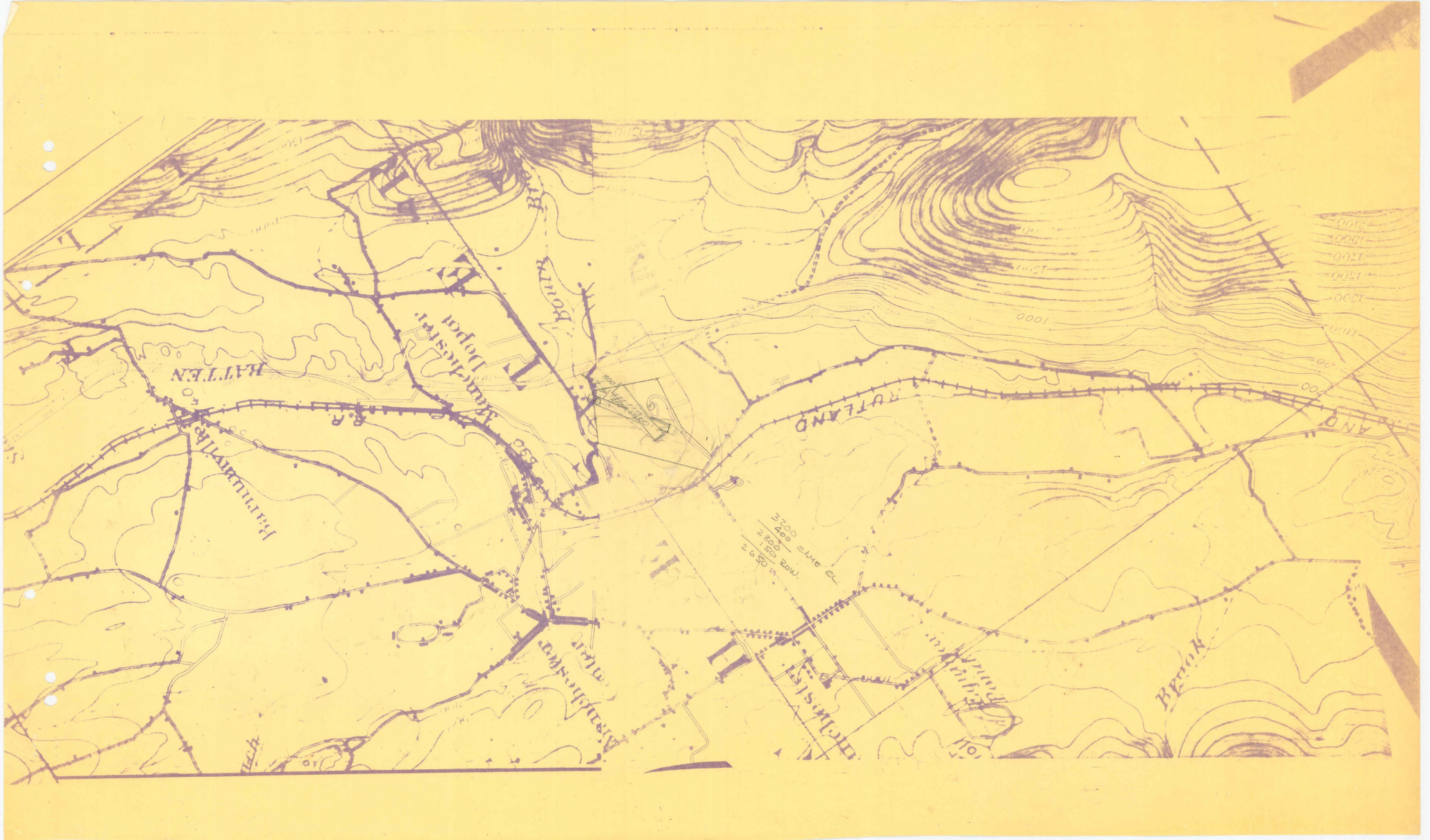
NOTES: SEE DRAWING IN CASE NO. 1000

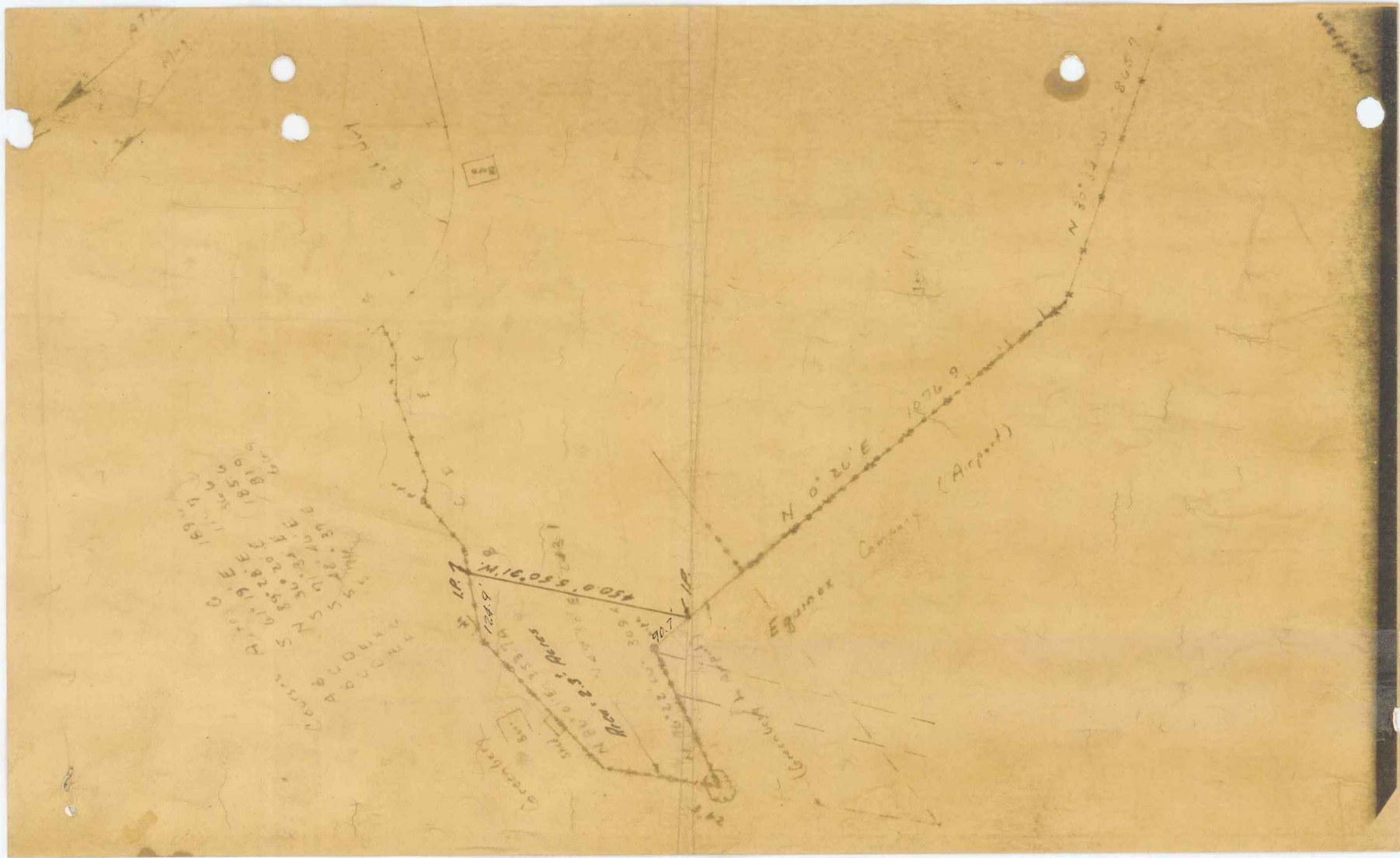
MANCHESTER AIRPORT *PLANS*



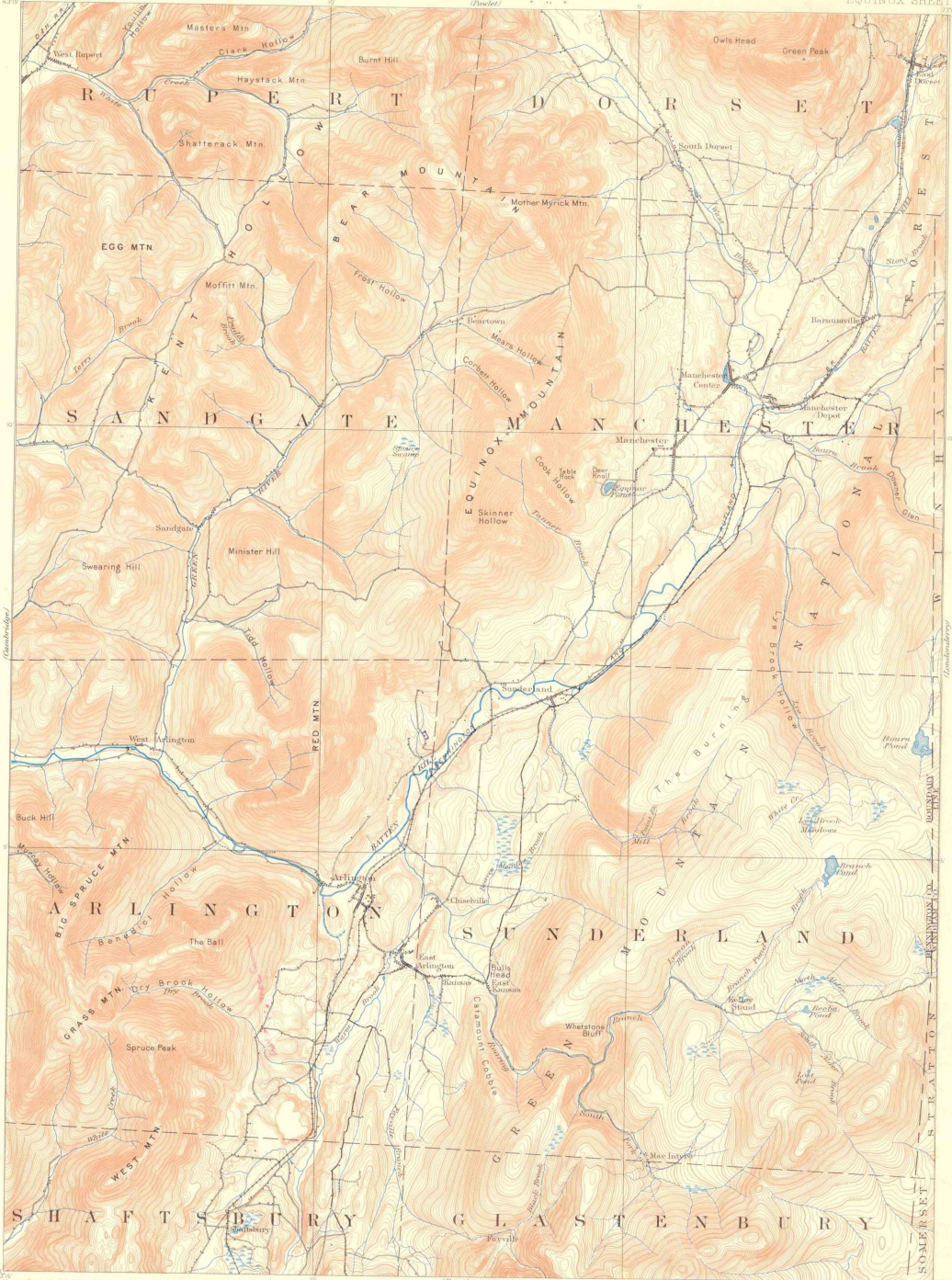
WEST



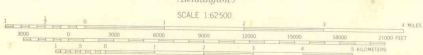




H-2

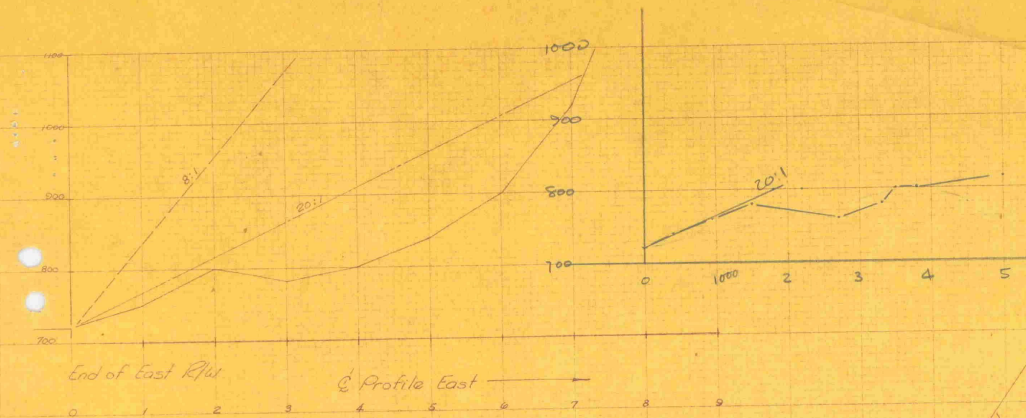


Henry Gannett, Chief Topographer
H.M. Wilson, Chief Geographer in charge
Triangulation by U.S. Coast and Geodetic Survey and G.T. Hawkins
Topography by J.H. Jennings, G.E. Hyde and Jas. McCombs
Surveyed in 1894.



CONTOUR INTERVAL 20 FEET
DATUM IS MEAN SEA LEVEL.

Edition of Nov. 1900, reprinted 1946
Polyconic projection
Surveyed by reconnaissance methods
V.T.
EQUINOX
N6300-W7300/5

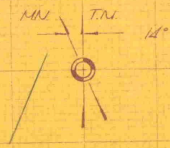


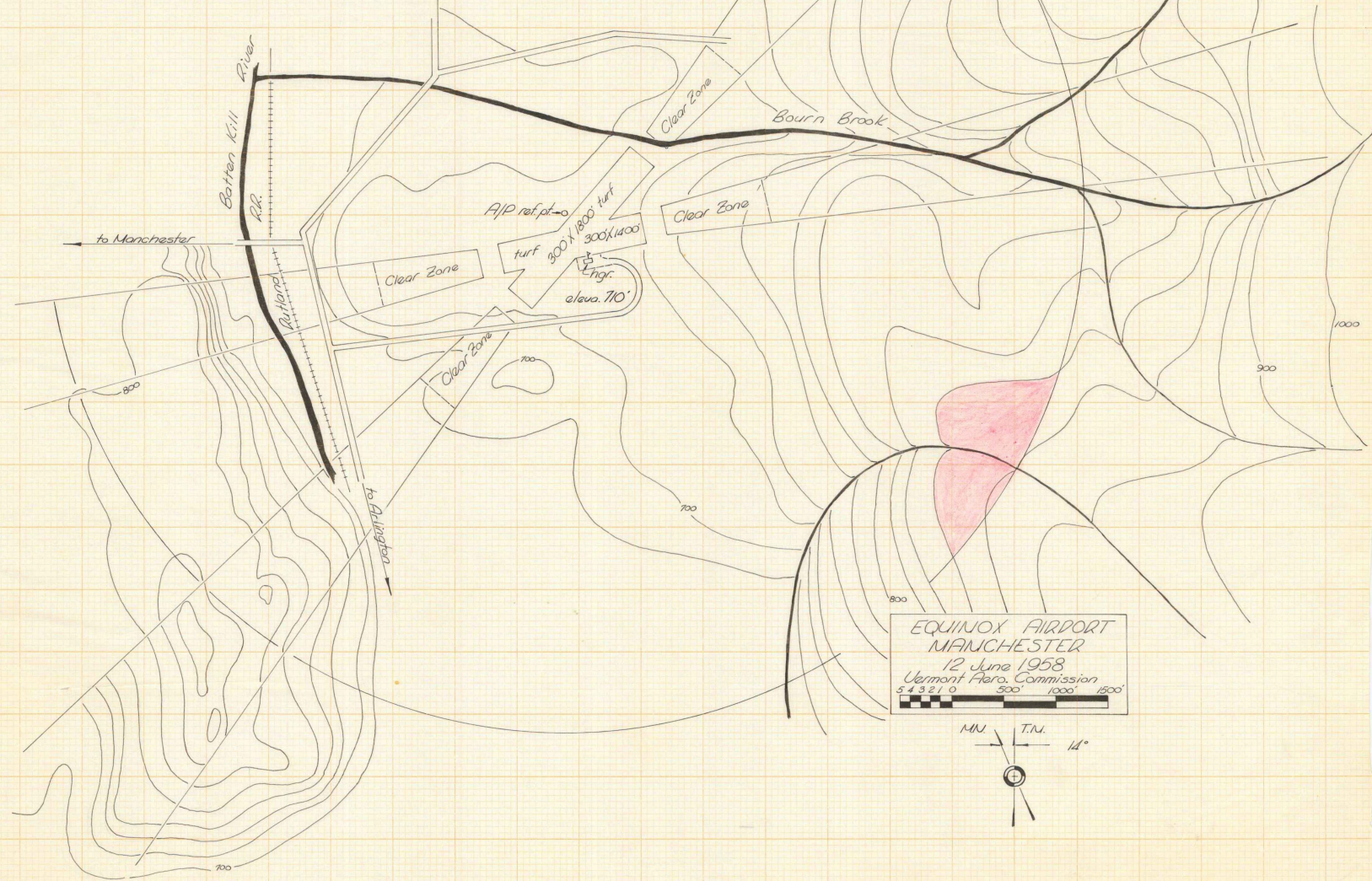
2450
2250

450	740
950	740
1500	780
1800	800
2200	800
2700	780
3300	780
3500	800
3800	800
5000	815

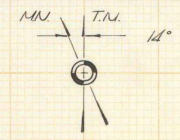


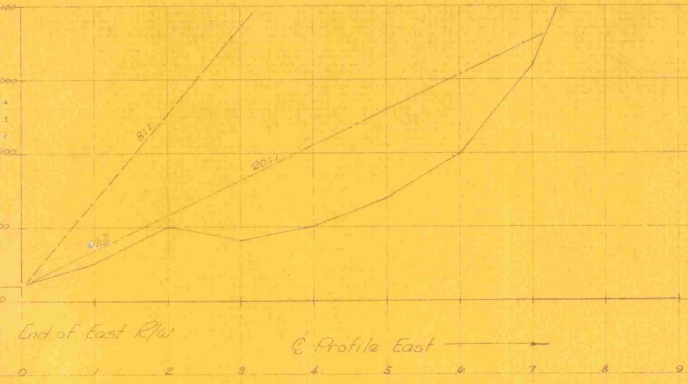
EQUINOX AIRPORT
MANCHESTER
12 June 1958
Vermont Aero. Commission
54 521 0





EQUINOX AIRPORT
 MANCHESTER
 12 June 1958
 Vermont Aero. Commission
 543210 500' 1000' 1500'

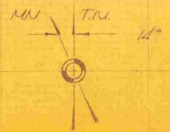


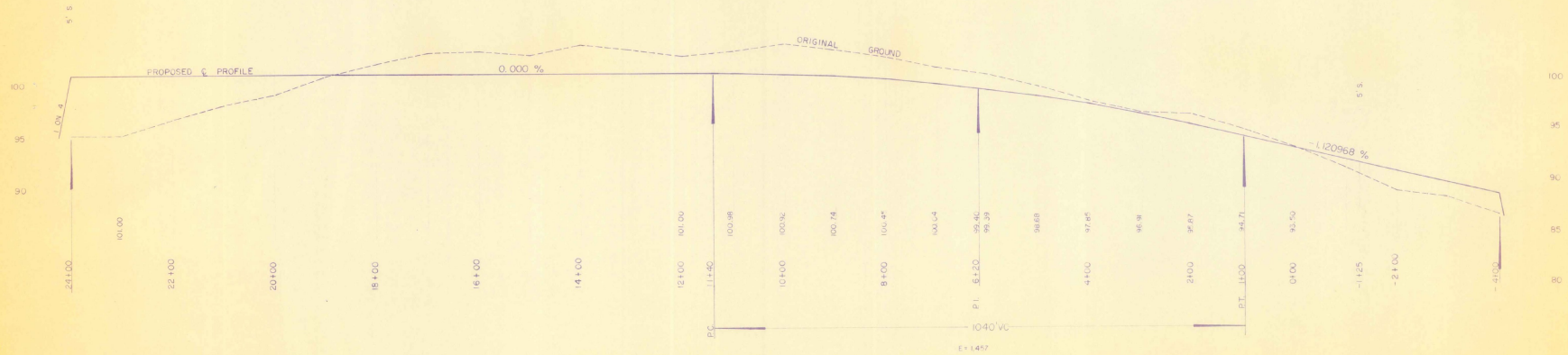


to Manchester
 Barre Kill River
 12.2
 Outlets
 boundary of



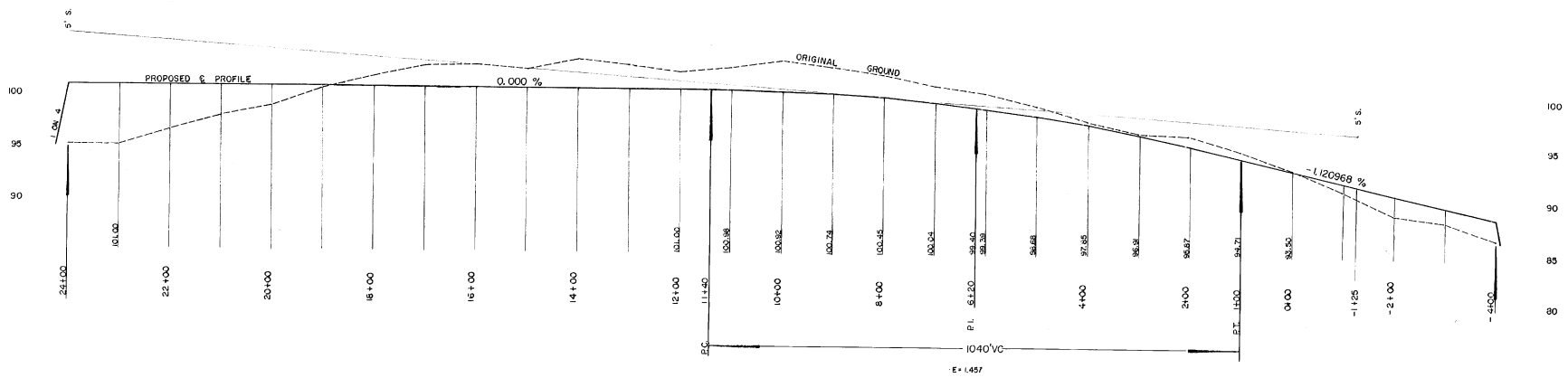
EQUINOX AIRPORT
 MANCHESTER
 12 June 1958
 Vermont Flora Commission
 54 3 37 0 500' 1000' 1500'





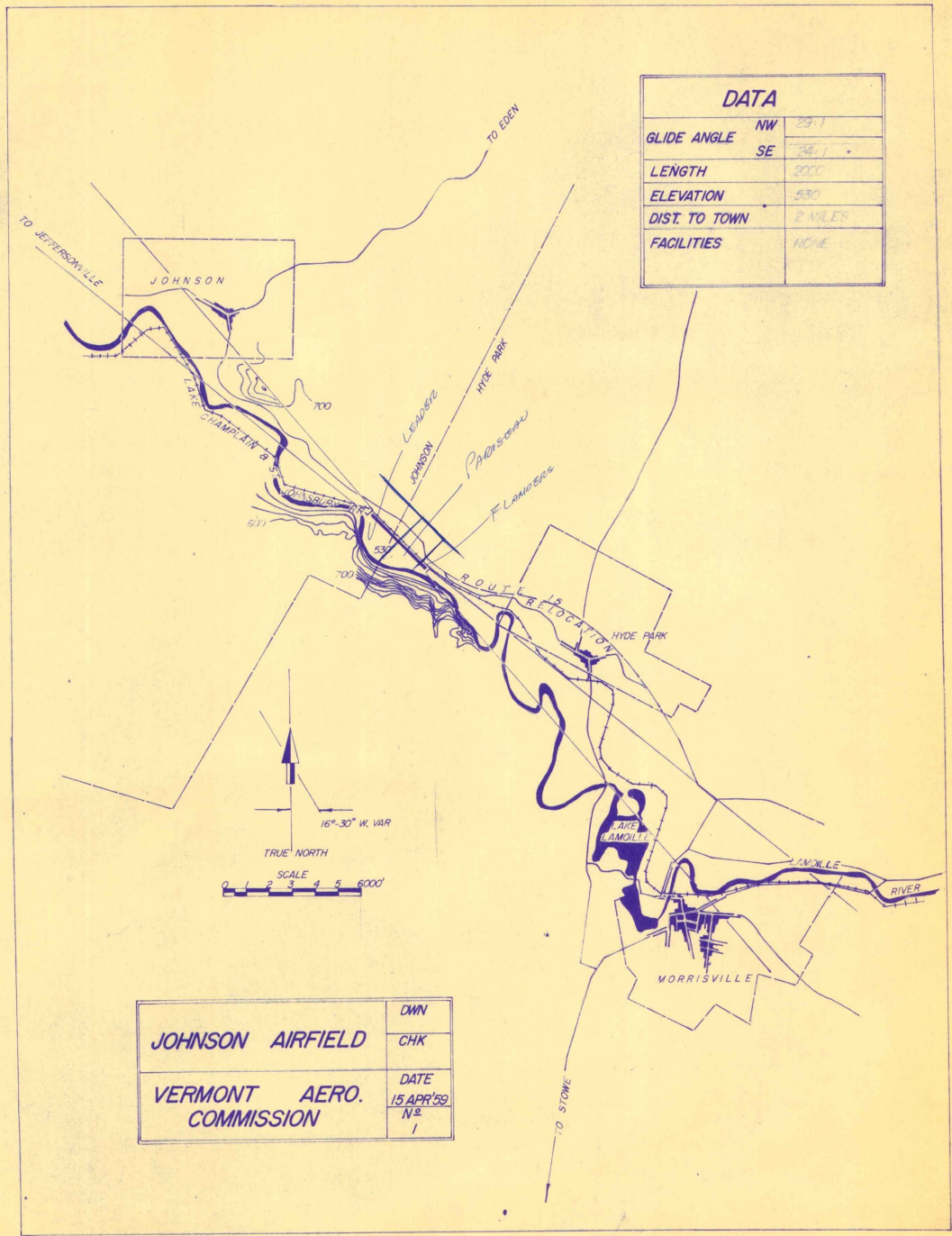
SCALE: 1" = 100' HOR
 1/8" = 5' VERT

SAVAGE ISLAND
 THEODORE RIEHLE
 (OWNER)
 VERMONT 4540 BUREAU
 3 CAMPBELL, RE # 1961 10-64

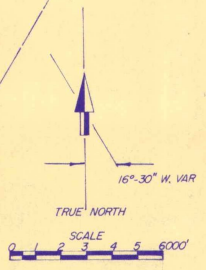


SCALE: 1" = 100' HOR.
1" = 5' VERT.

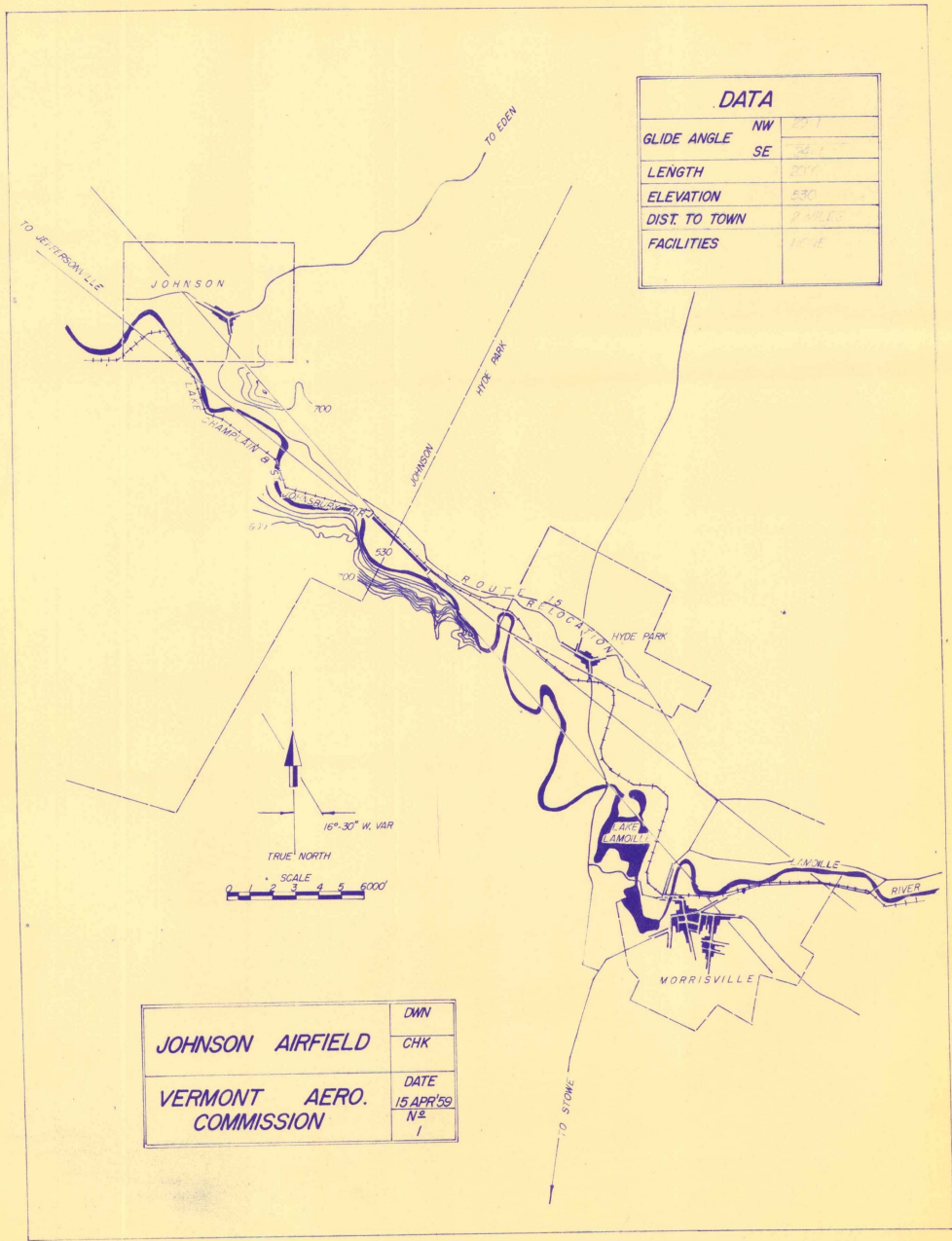
Savage Island
 THEODORE RIEHLE
 (OWNER)
 VERMONT AERO. BOARD
 D. CUMMINGS, P.E. #1564 10-64



DATA	
GLIDE ANGLE	NW 29.1
	SE 29.1
LENGTH	2000
ELEVATION	530
DIST TO TOWN	2 MILES
FACILITIES	HOME

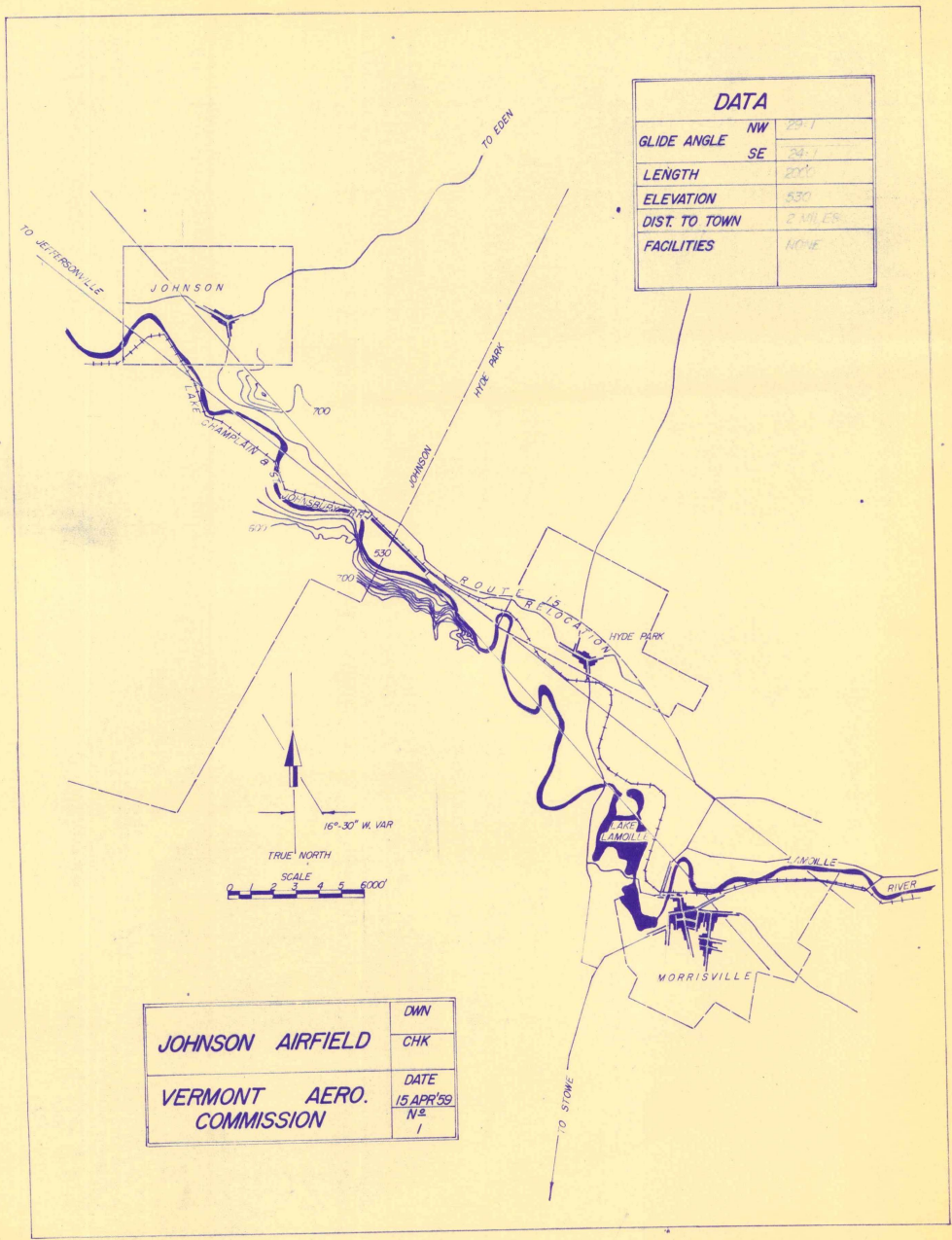


JOHNSON AIRFIELD	DWN
	CHK
VERMONT AERO. COMMISSION	DATE
	15 APR 59
	N ²
	1

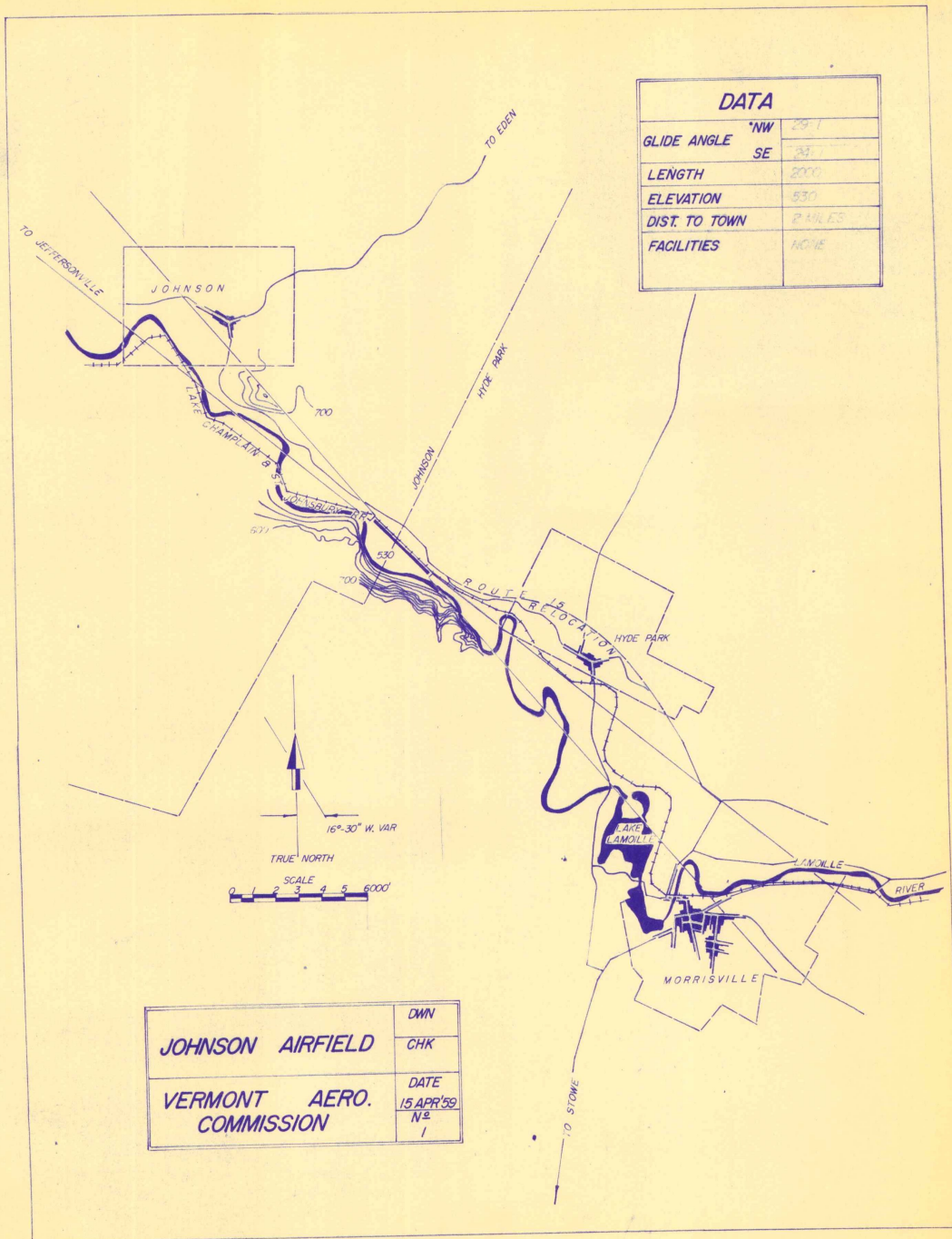


DATA		
GLIDE ANGLE	NW	10°
	SE	15°
LENGTH		200'
ELEVATION		530'
DIST. TO TOWN		2 MILES
FACILITIES		NONE

JOHNSON AIRFIELD	DWN
	CHK
VERMONT AERO. COMMISSION	DATE
	15 APR '39
	N ^o 1

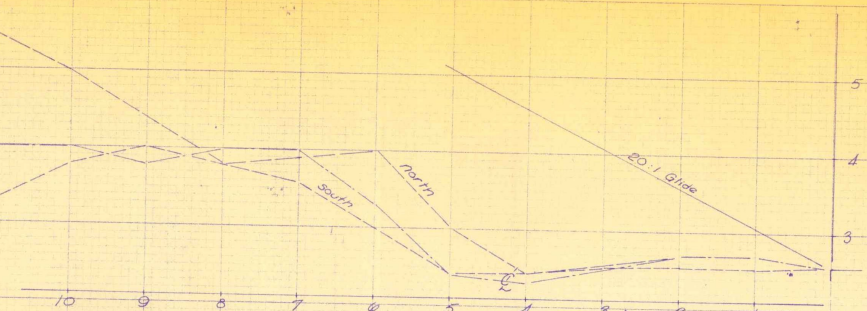


JOHNSON AIRFIELD	DWN
	CHK
VERMONT AERO. COMMISSION	DATE
	15 APR 59
	N ^o 1

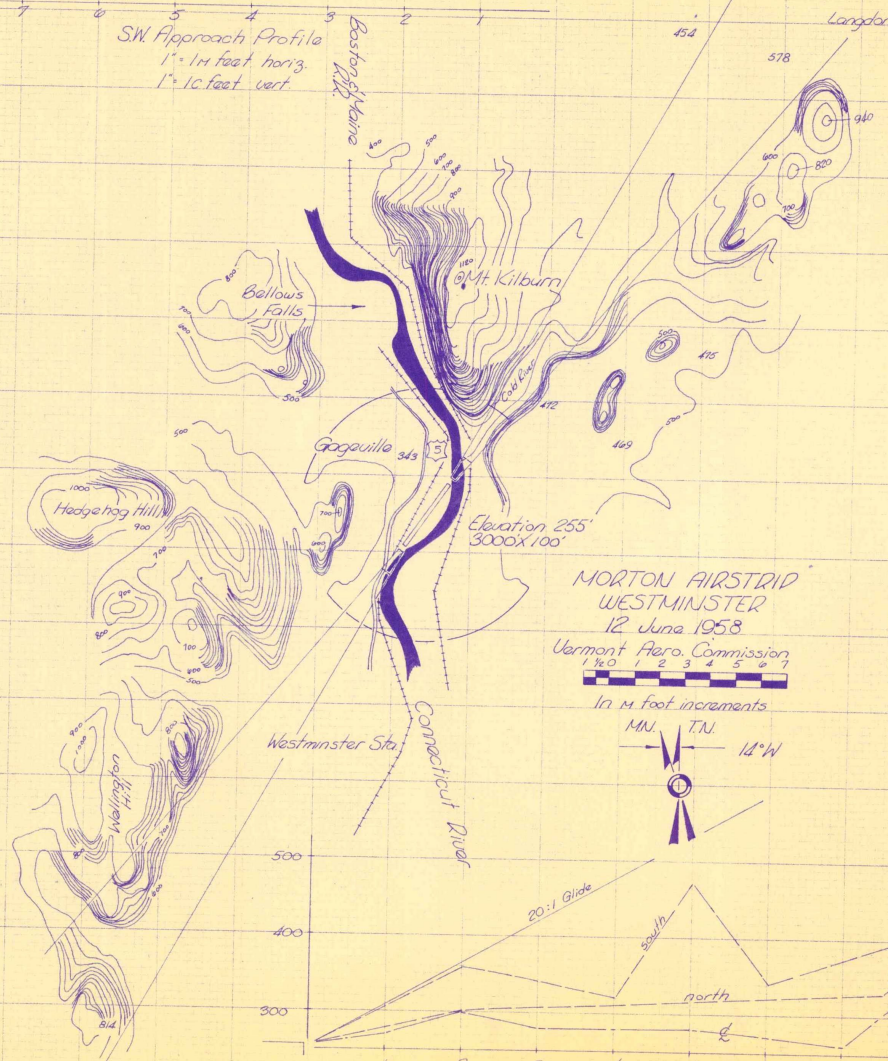


DATA	
GLIDE ANGLE	NW 29°
	SE 24°
LENGTH	2000
ELEVATION	530
DIST. TO TOWN	2 MILES
FACILITIES	NONE

JOHNSON AIRFIELD	DWN
	CHK
VERMONT AERO. COMMISSION	DATE
	15 APR 59
	N ^o 1

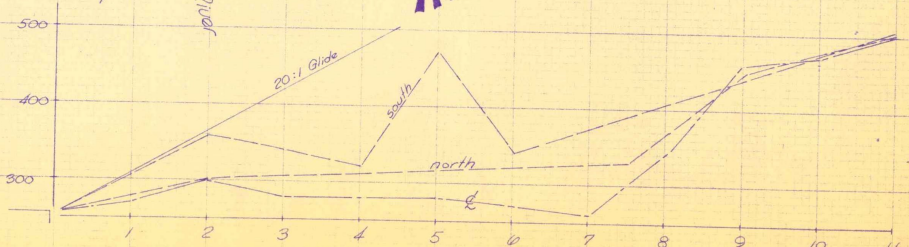


SW Approach Profile
 1" = 14 feet horiz.
 1" = 10 feet vert.

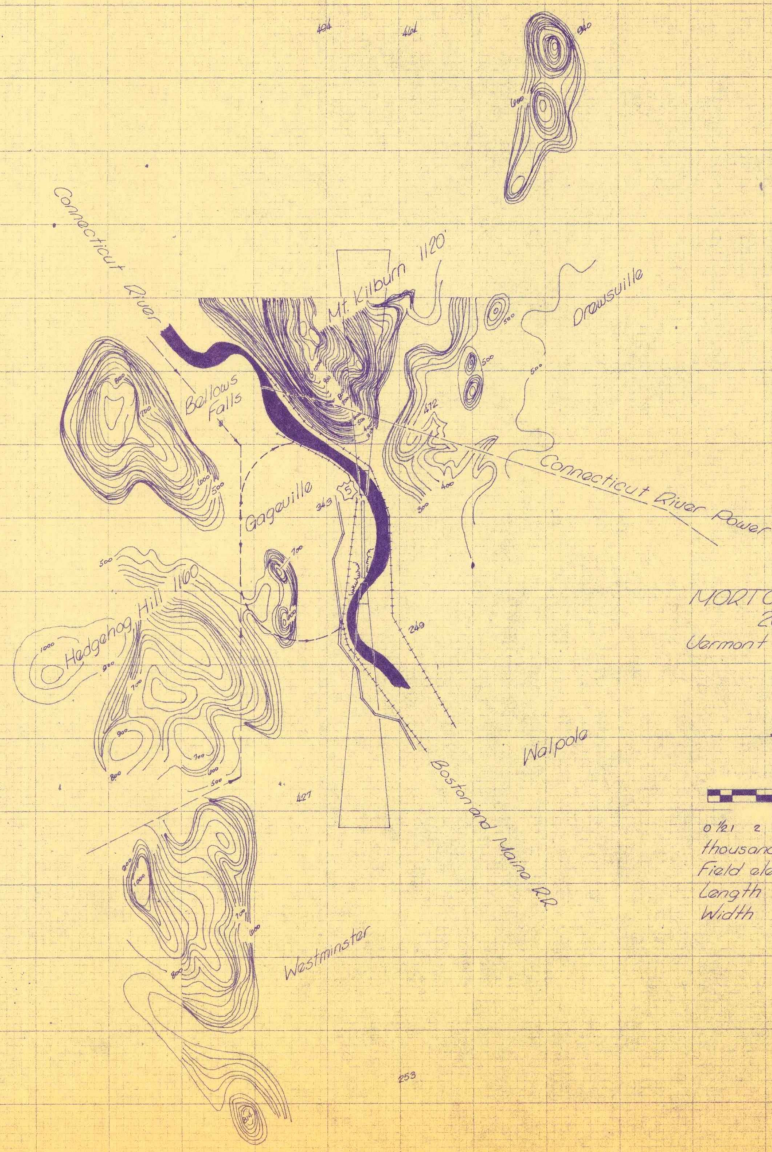
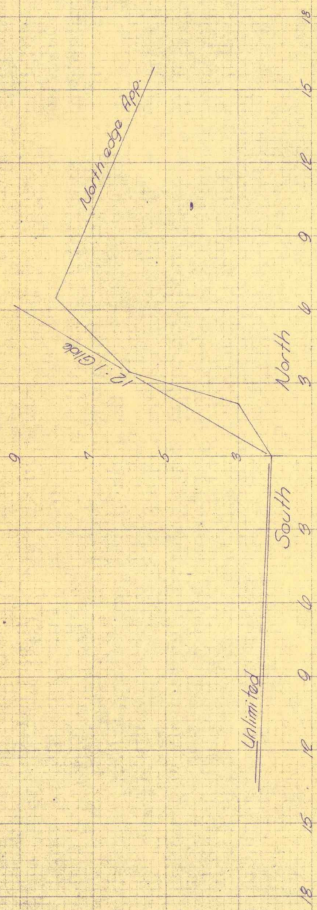


MORTON AIRSTRIP
 WESTMINSTER
 12 June 1958
 Vermont Aero. Commission
 1:40,000

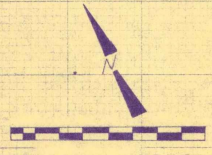
In 4 foot increments



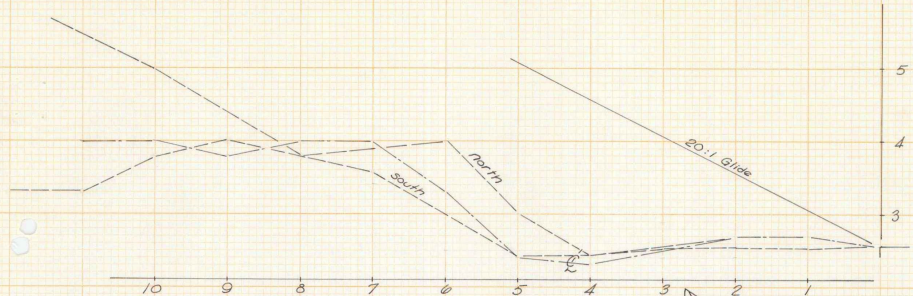
NE Approach Profile
 1" = 14 feet horizontal
 1" = 10 feet vertical



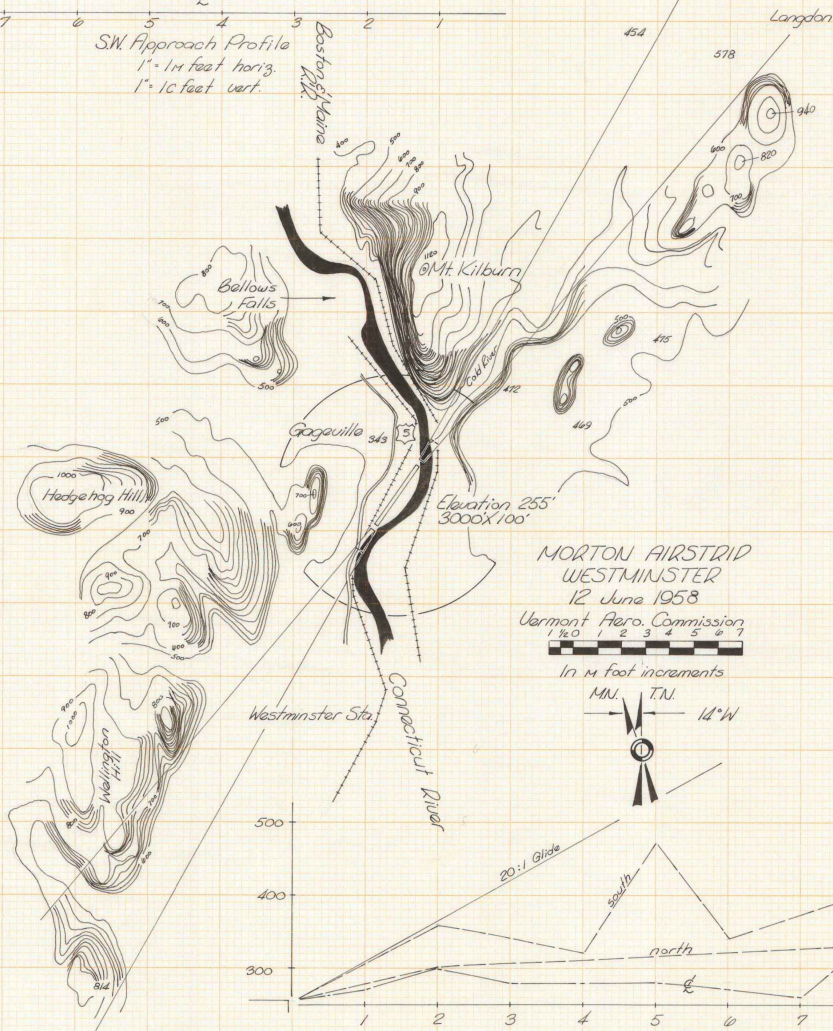
MORTON AIRSTRIP
 20 June 1958
 Vermont Aero. Commission



0 1 2 3 4 5 6 7 8
 thousand foot increments
 Field elevation 255 MSL.
 Length 3200' (surf)
 Width 100'



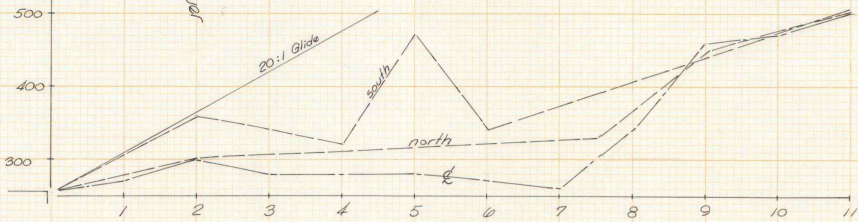
SW Approach Profile
 1" = 14 feet horiz.
 1" = 10 feet vert.



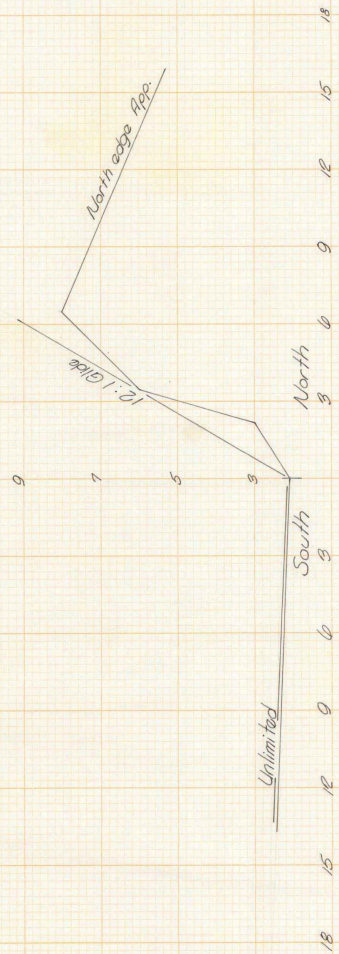
MORTON AIRSTRIP
 WESTMINSTER
 12 June 1958
 Vermont Aero. Commission
 1 1/4 1 2 3 4 5 6 7

In 14 foot increments

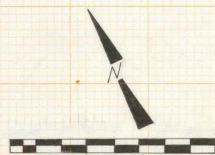
MN TN 14°W



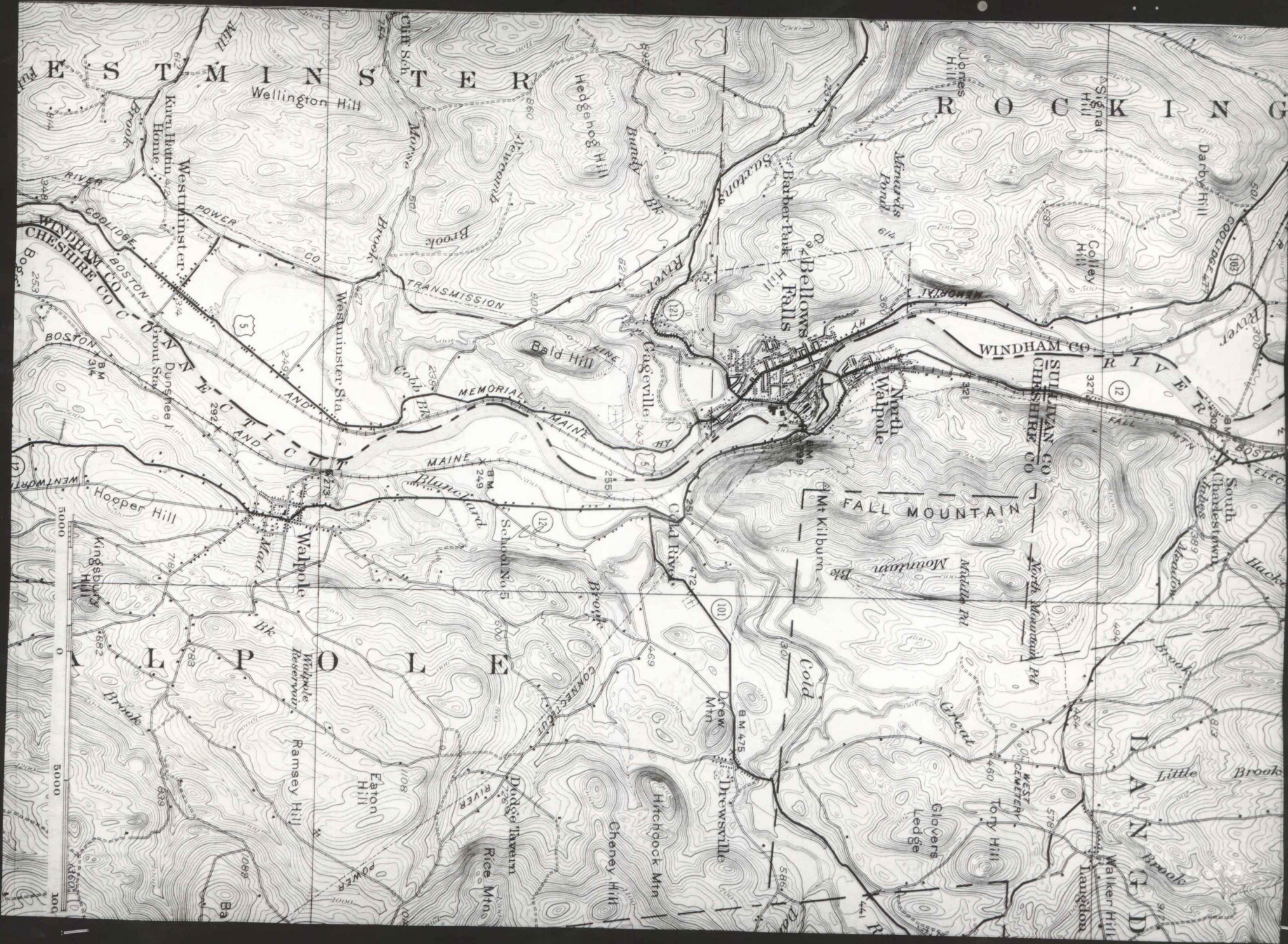
NE Approach Profile
 1" = 14 feet horizontal
 1" = 10 feet vertical



MORTON AIRSTRIP
 20 June 1958
 Vermont Aero. Commission

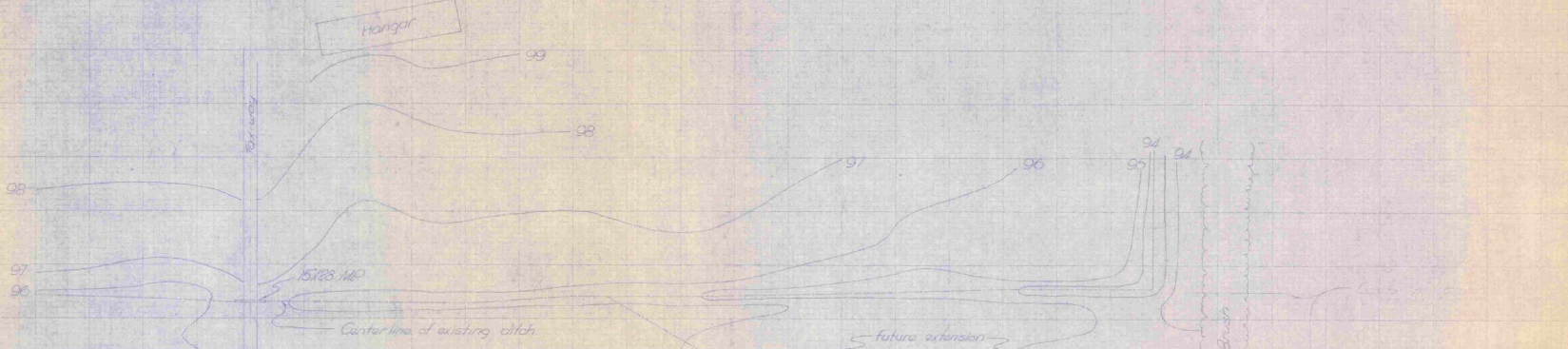
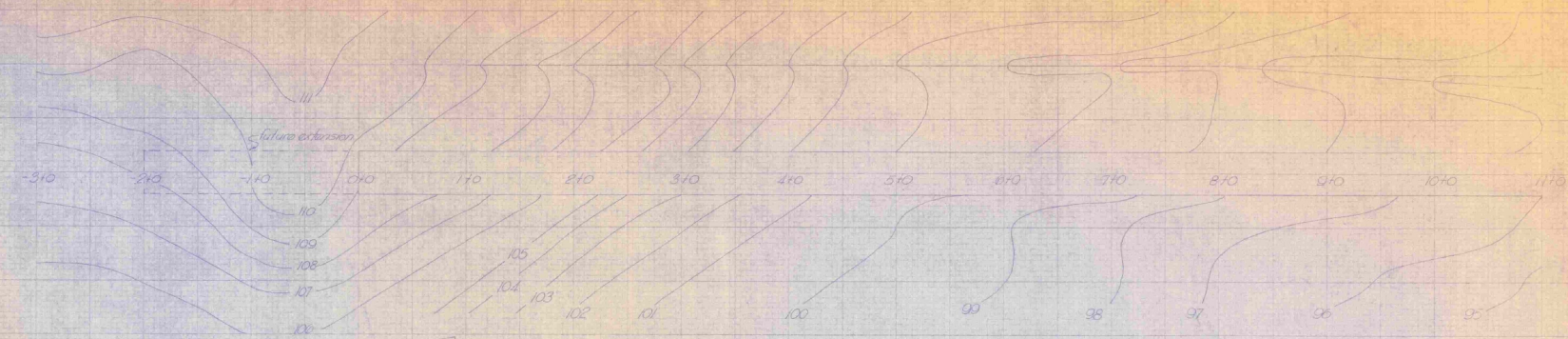


0 1 2 3 4 5 6 7 8
 thousand foot increments
 Field elevation 255 M.S.L.
 Length 3200' (surf)
 Width 100'





176.8%
1" = 3000'



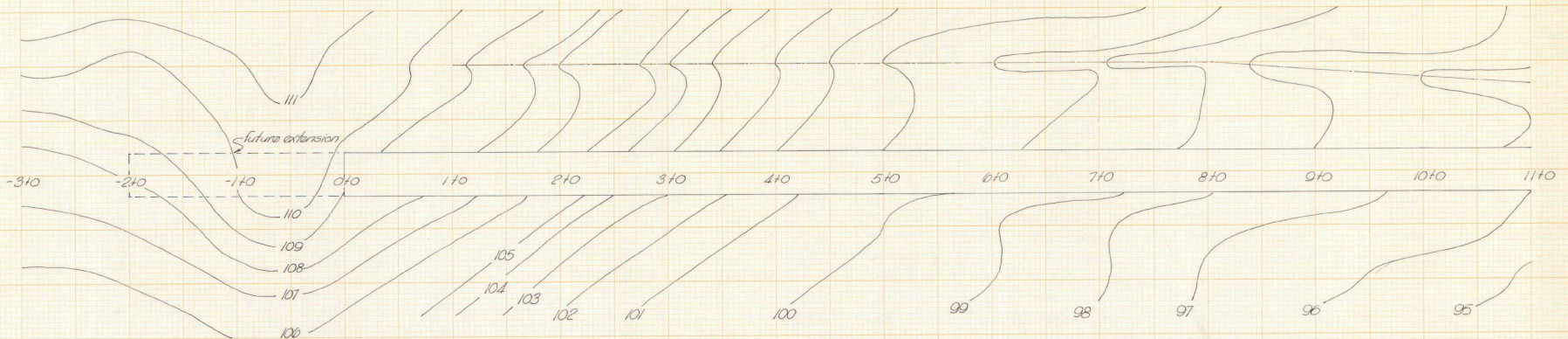
FAIR HAVEN
AIRFIELD
29 July 55
U.S. Army Commission
Scale: 50'

Contour Elevation

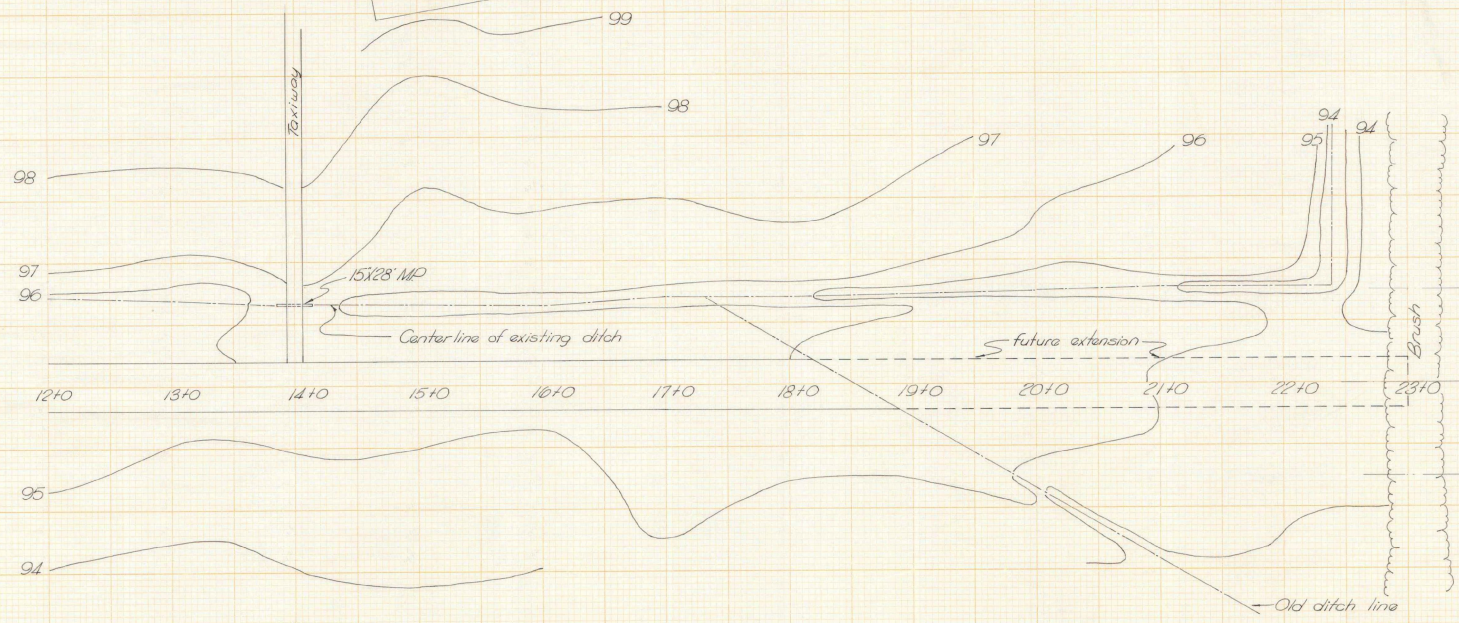
FAIR

HAVEN



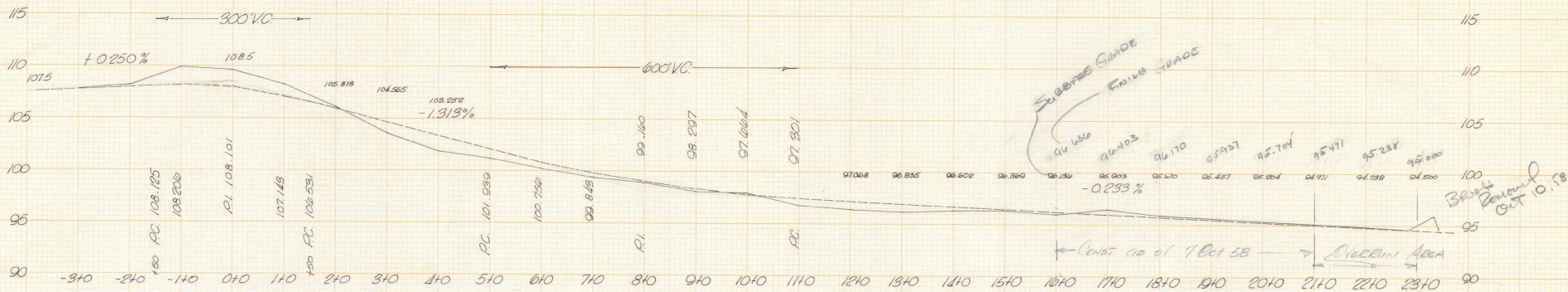


Hangar

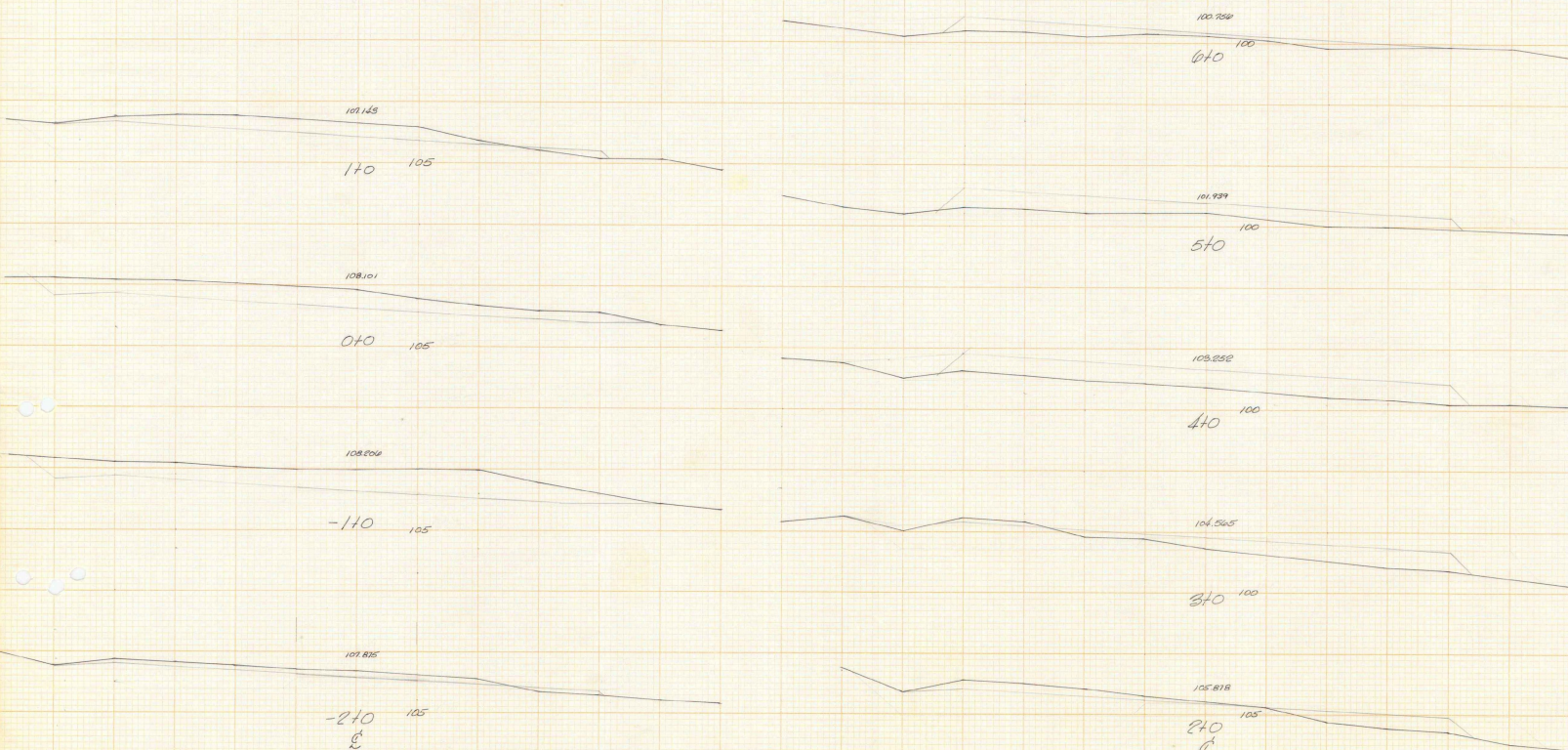


FAIR HAVEN
AIRFIELD
29 July '58
Ut Aero Commission
Scale 1" = 50'

Contour Sheet

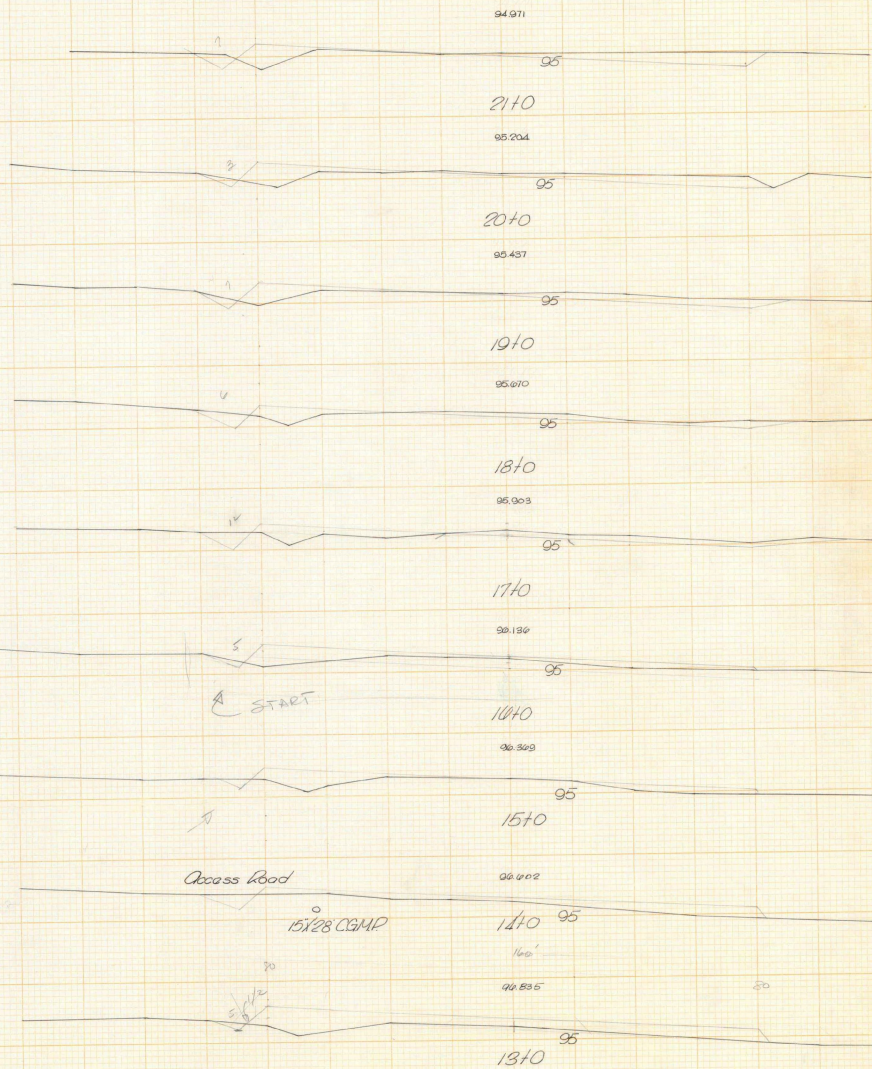
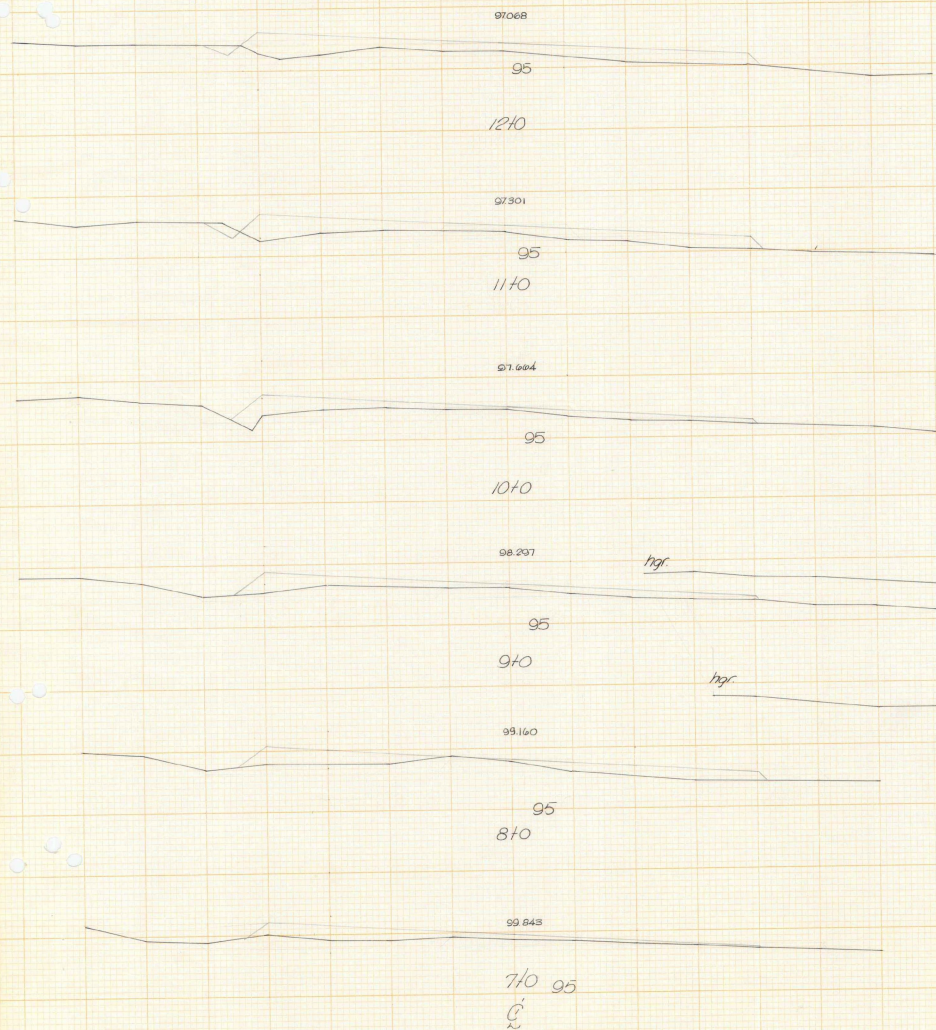


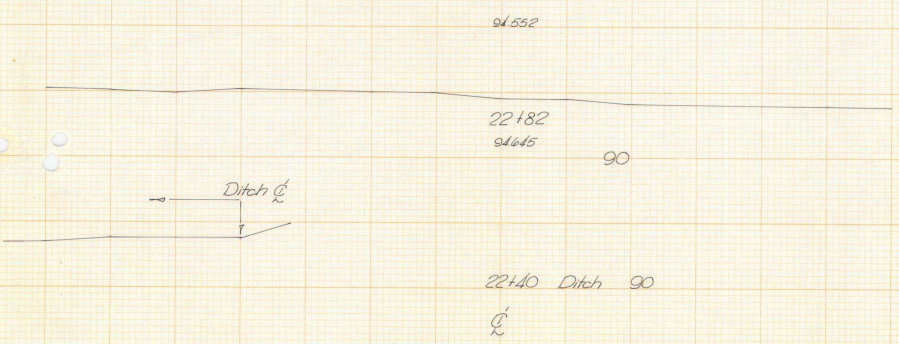
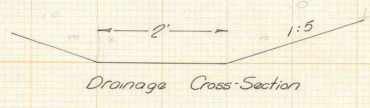
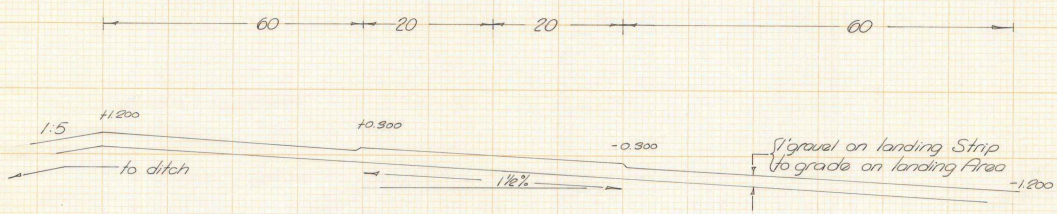
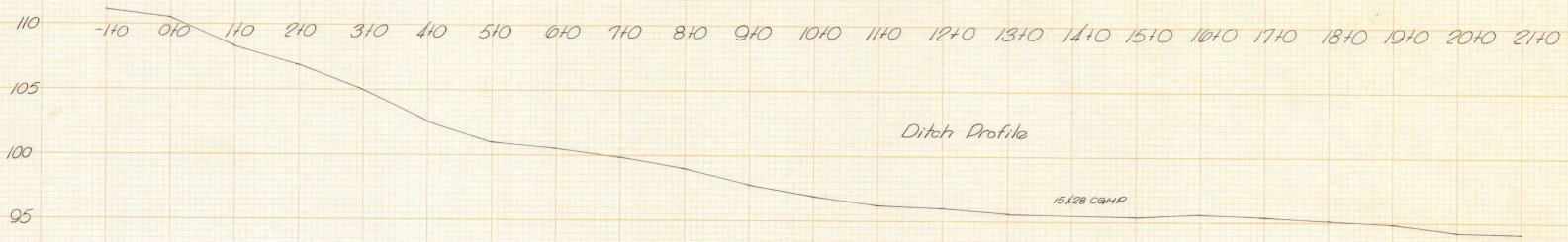
RUNWAY CENTERLINE PROFILE



FAIR HAVEN
AIRFIELD
29 July 1958

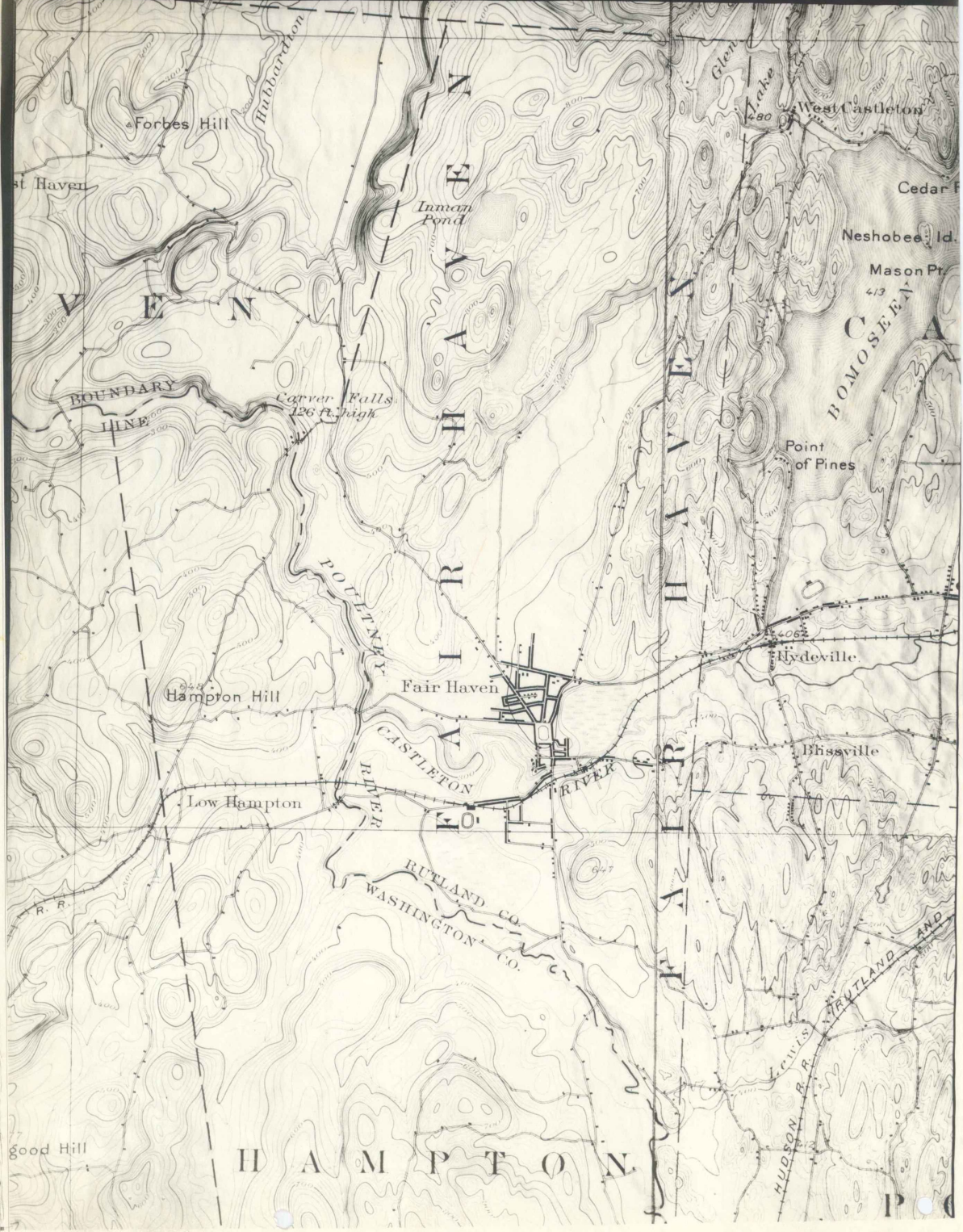
X-SECTIONS
Hor. 1" = 20'
Vert. 1" = 5'





FAIR HAVEN
AIRFIELD
July 1958

DRAINAGE



st Haven

Forbes Hill

Hubbardton

Imman Pond

Glen
Frake

West Castleton

Cedar F

Neshobee Id.

Mason Pt
413

BOUNDARY
LINE

Carver Falls
126 ft. high

Point
of Pines

Hydeville

Hampton Hill

Fair Haven

Bissville

Low Hampton

RUTLAND CO.
WASHINGTON CO.

R. R.

Good Hill

H A M P T O N

HUDSON R. R.

RUTLAND AND

Monadnock Area West
B40 elev.

24

21

18

PROFILE

15

12

7:1 Gilts

Western edge App. zone

50:1 Gilts

Western edge App. zone

North

South

18

15

12

9

6

3

0

3

6

9

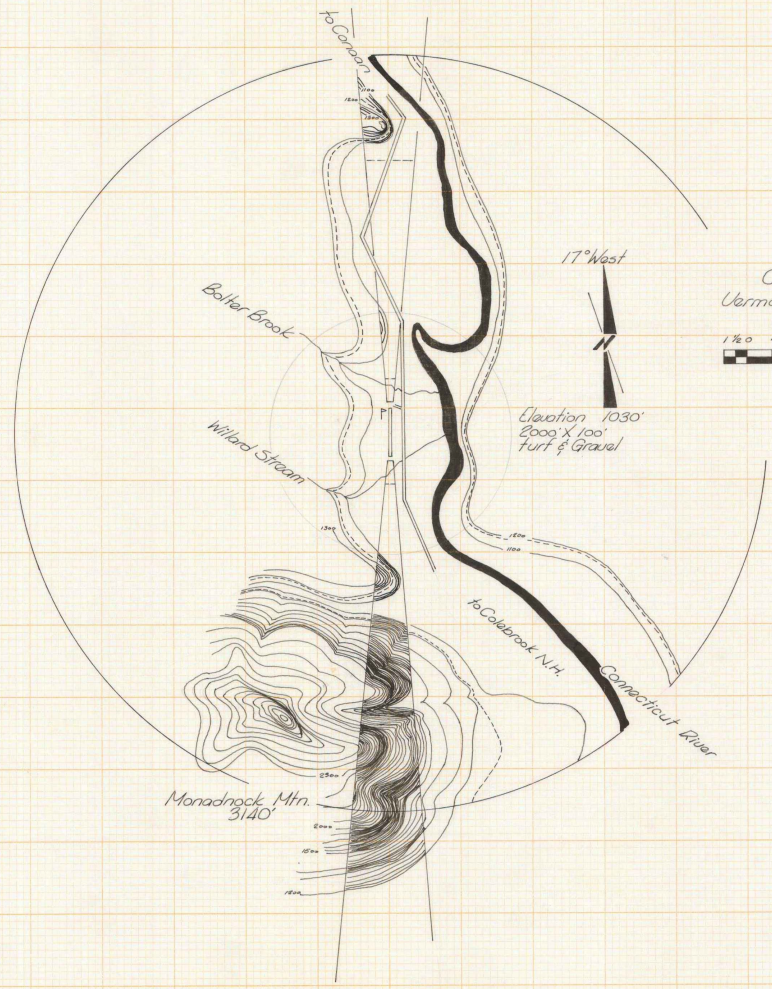
12

15

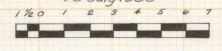
18

21

24



CANAAN
Vermont Aero Commission
18 July 1958



17° West

Elevation 1030'
2000' X 100'
Turf & Gravel

Monadnock Mtn.
3140'

Bolter Brook

Willard Stream

to Colerbrook N.H.

Connecticut River

Hanger 5012

INITIALS

Vermont Agency of
Transportation
Phase III- Interstate
#090303-01

Several
projects

Misc. ~~Original Steel plans~~
~~24-74~~ AIRPORTS ~~1944-1958~~