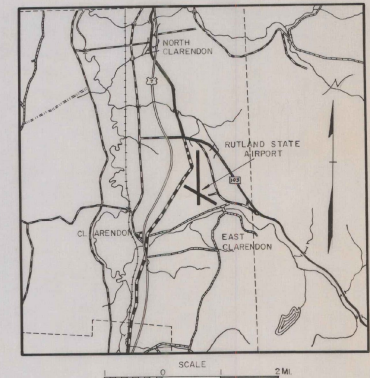
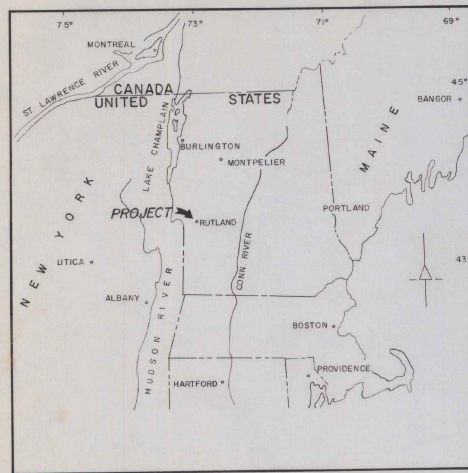


RUTLAND STATE AIRPORT

NORTH CLARENDON, VT.

RECONSTRUCT DRAINAGE SYSTEM RUNWAY I-19 (4000')

A.D.A.P. PROJECT NO. 8-50-0015-01



INDEX OF SHEETS	
DESCRIPTION	
PAGE	DESCRIPTION
1	LAYOUT PLAN
2	DROP INLET TYPICAL
3	BORING LOG

AS BUILT PLANS
I HEREBY CERTIFY THAT ALL CONSTRUCTION REQUIRED BY THIS SET OF DRAWINGS HAS BEEN ACCOMPLISHED AS INDICATED HEREIN.
BY Robert L. Lipp RESIDENT INSPECTOR
DATED Nov 9, 1971

REVISIONS	
DESCRIPTION	DATE

U.S. DEPARTMENT OF TRANSPORTATION
FEDERAL AVIATION
ADMINISTRATION

APPROVED _____ DATE _____
CHIEF,
AIRPORTS DIVISION

RUTLAND STATE AIRPORT
NORTH CLARENDON,
VERMONT

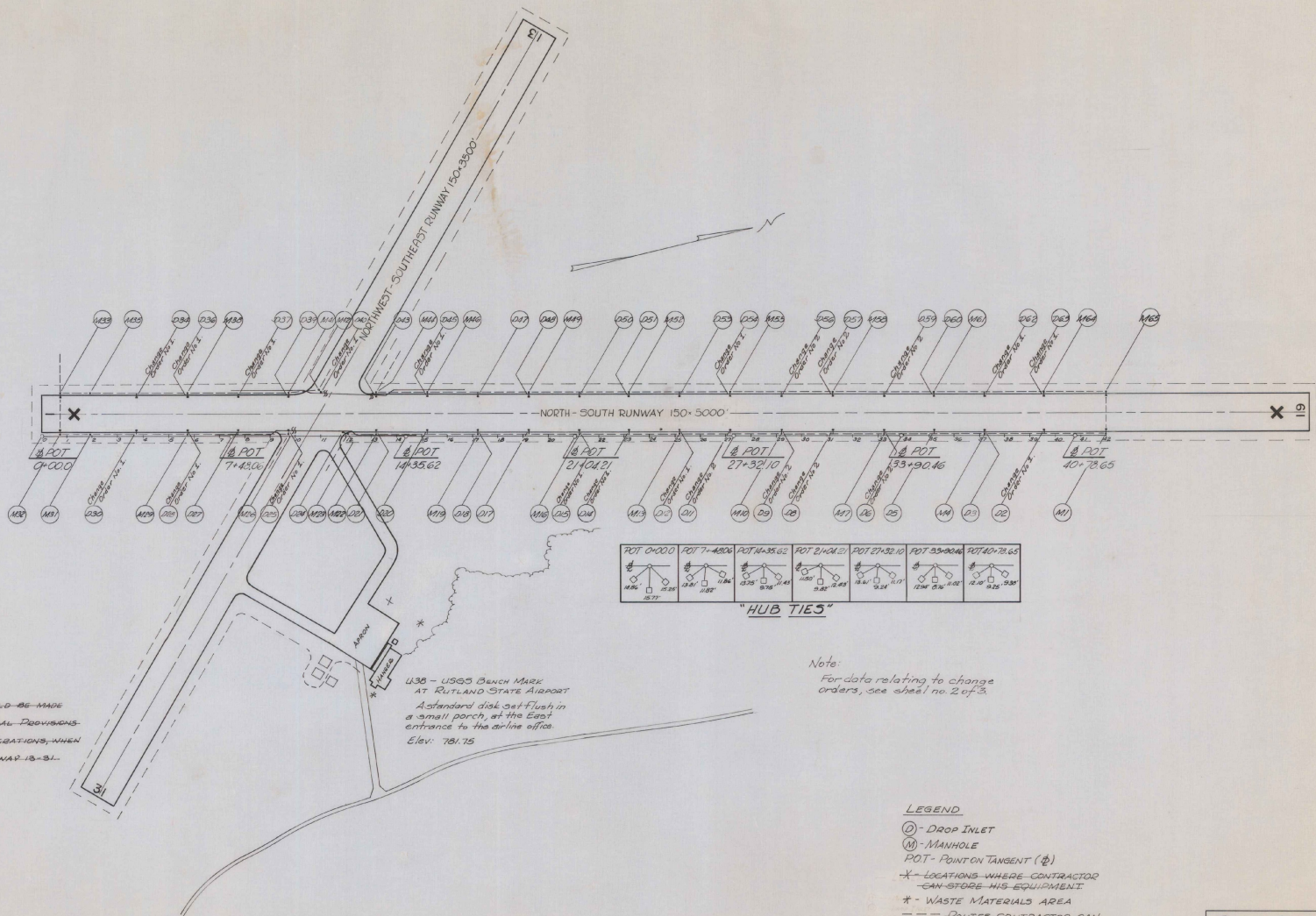
VERMONT AERONAUTICS BOARD

APPROVED Charles R. Wood DATE Nov 5, 71
COMMISSIONER

APPROVED John H. Shepard DATE Nov 5, 71
AIRPORT ENGR.

PREPARED BY
VERMONT AERONAUTICS BOARD
MONTPELIER, VERMONT

G.H. SHEPARDSON - AIRPORT ENGR.
DATE: JUNE, 1971

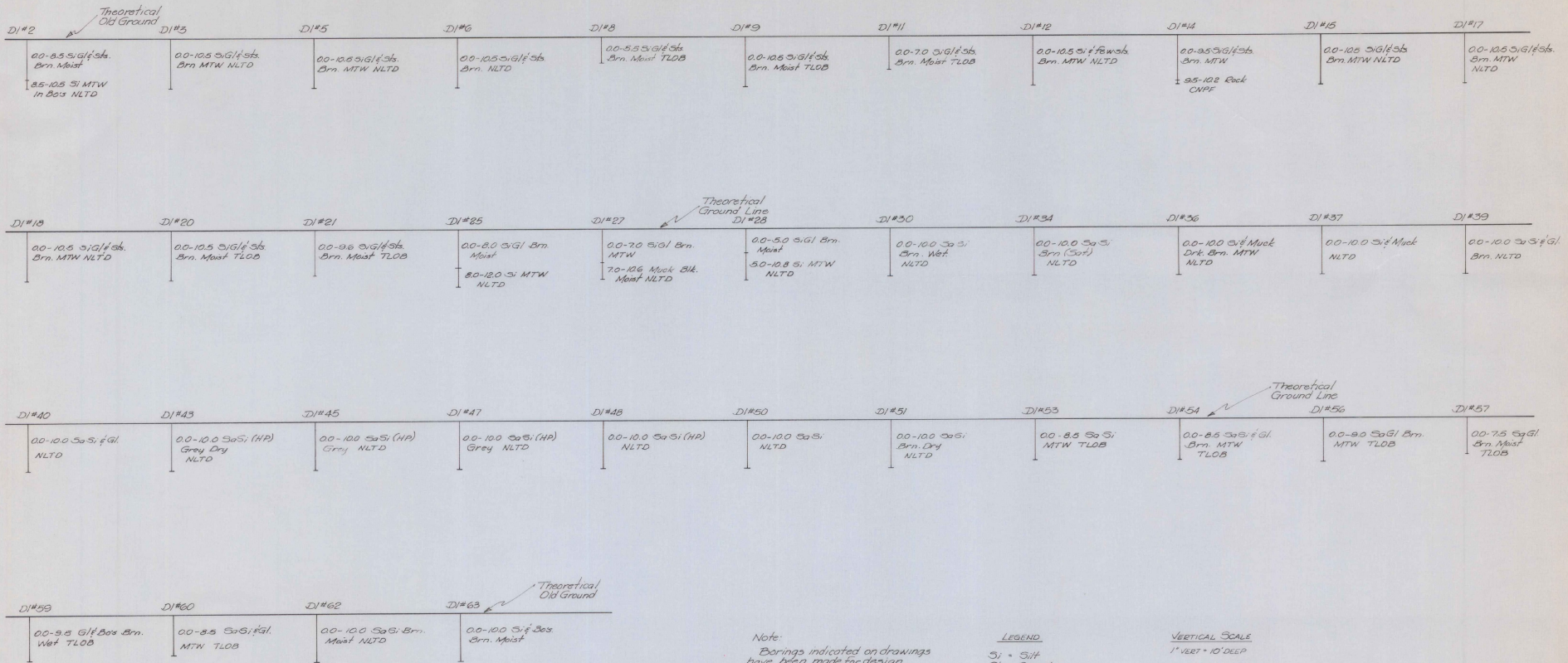


NOTE:
 REFERENCE SHOULD BE MADE
 TO CONTRACT SPECIAL PROVISIONS
 IN REGARDS TO OPERATIONS, WHEN
 IN VICINITY OF RUNWAY 13-31.

Note:
 For data relating to change
 orders, see sheet no. 2 of 3.

- LEGEND
- DI - DROP INLET
 - MH - MANHOLE
 - POT - POINT ON TANGENT (P)
 - X - LOCATIONS WHERE CONTRACTOR CAN STORE HIS EQUIPMENT
 - * - WASTE MATERIALS AREA
 - - - ROUTES CONTRACTOR CAN TRAVEL TO GET HIS EQUIPMENT TO THE CONST. SITE.
 - LOCATION OF SPLICES IN R/W LIGHTING SYSTEM

RUTLAND STATE AIRPORT
 ADAP 8-30-0015-01
 "DRAINAGE SYSTEM PLAN"
 SCALE: 1 INCH = 200 FEET
 SURVEYED BY V.A.B. 1971, DORRIN BY HERR
 G. SHEPHERDSON - AIRPORT ENGINEER



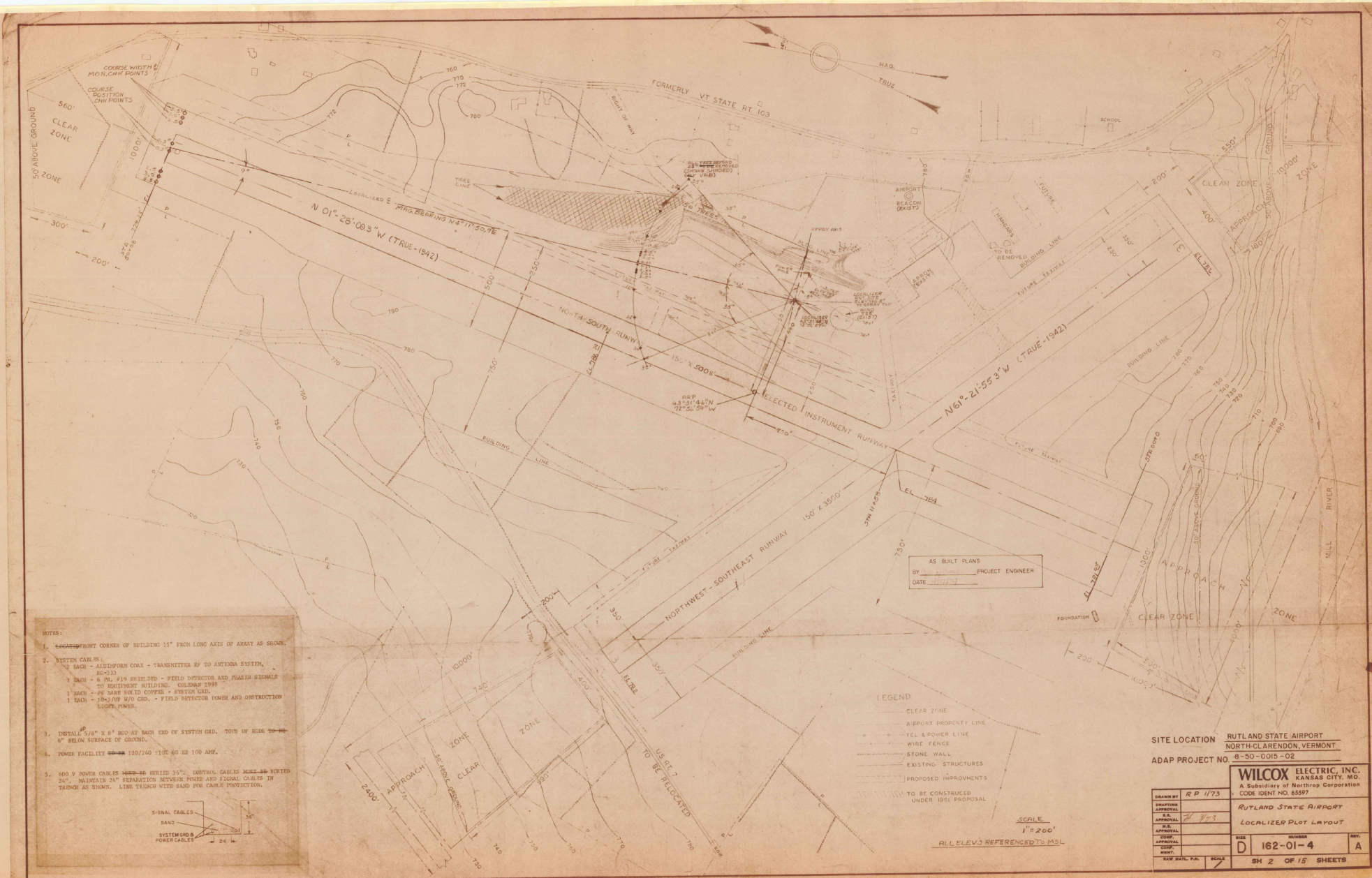
Note:
 Borings indicated on drawings have been made for design purposes only and are not warranted to show actual sub-surface conditions.

LEGEND

- Si - Silt
- Gl - Gravel
- Sts - Stones
- Sos - Boulders
- Sa - Sand
- TLOB - To ledge or boulders
- MTW - Moist to Wet
- NLTD - No ledge to depth
- CNRF - Cannot penetrate further
- (HP) - Hard Pan
- (Sat) - Saturated
- Brn - Brown
- Blk - Black

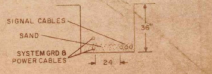
VERTICAL SCALE
 1" = 10' DEEP

RUTLAND STATE AIRPORT
ADAP 8-50-0015-01
BOEING LOG
BORINGS BY: VERMONT HWY DEPT. FOR VERMONT AERONAUTICS BOARD
DRAWN BY: D. HARRIS, 6-71
G. SHEPARDSON - AIRPORT ENGR.



NOTES:

1. LOCATE FRONT CORNER OF BUILDING 15' FROM LONG AXIS OF ARRAY AS SHOWN.
2. SYSTEM CABLES:
 - 20 EACH - ALUMINUM CABLE - TRANSMITTER BY TO ANTENNA SYSTEM, AC-233
 - 1 EACH - 6 PR. 1/4" SHIELDED - FIELD DETECTOR AND FLARE SIGNALS TO EQUIPMENT BUILDING, COLDFR 1988
 - 1 EACH - #8 BARE SOLID COPPER - SYSTEM GND.
 - 1 EACH - 100/100 #10 GND. - FIELD DETECTOR POWER AND OBSTRUCTION LIGHT POWER.
3. INSTALL 3/8" X 8" RIG AT EACH END OF SYSTEM CABLE. TOP OF RIGS TO BE 6" BELOW SURFACE OF GROUND.
4. POWER FACILITY 120/240-110V 60 HZ 100 AMP.
5. 600 V POWER CABLES 4/0 SHIELDED 30°. CONTROL CABLES 2#20 BURIED 24". MAINTAIN 24" SEPARATION BETWEEN POWER AND SIGNAL CABLES IN TRENCH AS SHOWN. LINE TRENCH WITH SAND FOR CABLE PROTECTION.



AS BUILT PLANS
 BY _____ PROJECT ENGINEER
 DATE _____

- LEGEND
- CLEAR ZONE
 - AIRPORT PROPERTY LINE
 - TEL & POWER LINE
 - WIRE FENCE
 - STONE WALL
 - EXISTING STRUCTURES
 - PROPOSED IMPROVEMENTS
 - TO BE CONSTRUCTED UNDER 1951 PROPOSAL

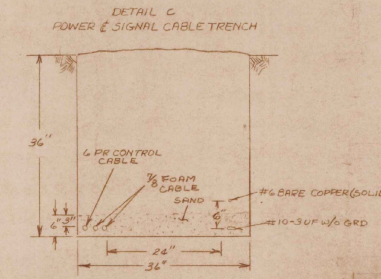
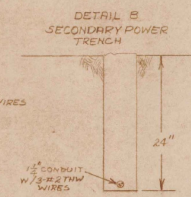
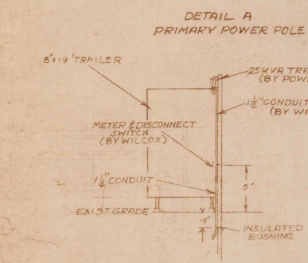
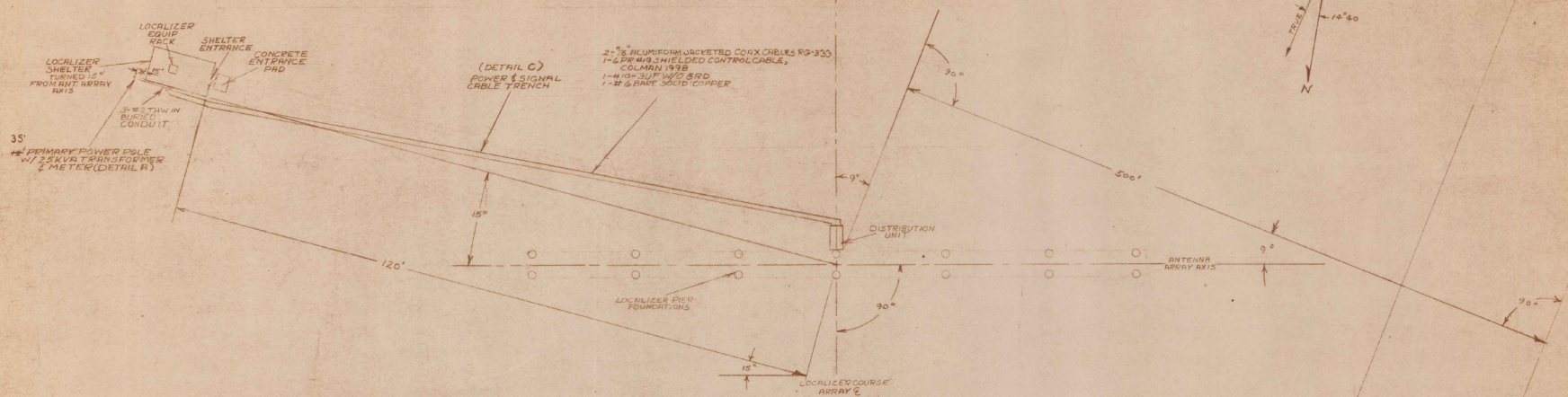
SCALE
 1" = 200'

ALL ELEV'S REFERENCED TO MSL

SITE LOCATION **RUTLAND STATE AIRPORT**
NORTH-CLAIRENDON, VERMONT
 ADAP PROJECT NO. 8-50-0015-02

WILCOX ELECTRIC, INC.
 A Subsidiary of Northrop Corporation
 CODE IDENT NO. 65597

DESIGNED BY	RP 1173	DATE	
CONTRACTING AGENCY		APPROVAL	
APPROVAL		DATE	
CONTRACT NO.		PROJECT NO.	
CONTRACT NAME		NO. D	ISSUE NO. 162-01-4
SCALE		DATE	
SHEET NO. 2		OF 15 SHEETS	



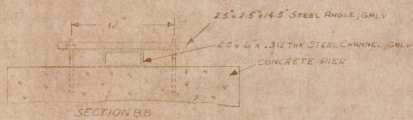
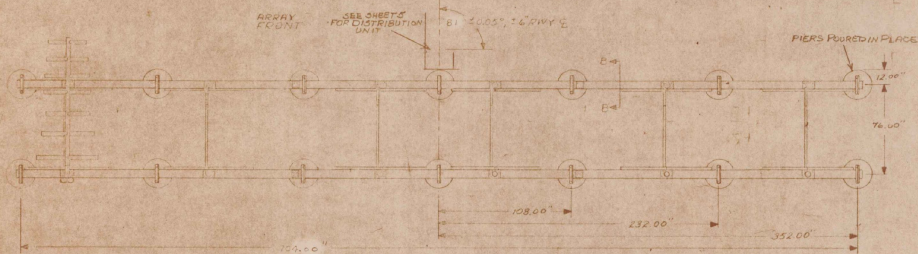
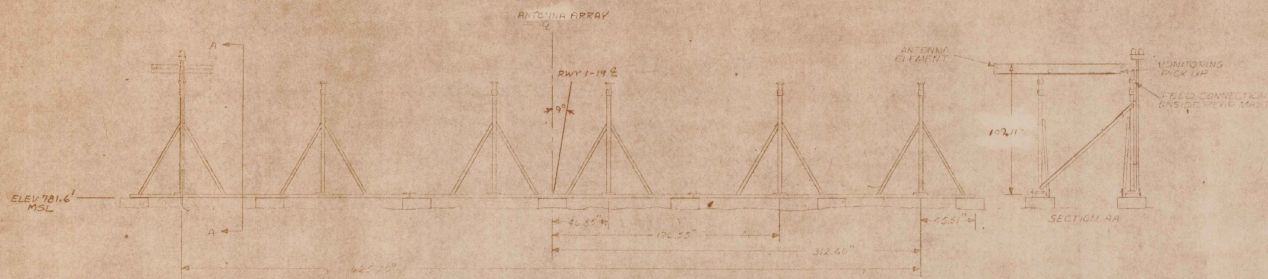
NO SCALE

- NOTES:
1. SUBCONTRACTOR SHALL PROVIDE TRENCHES AS SHOWN AND INSTALL ALL SERIAL CABLE INDICATED. BACKFILL AND COMPACT AS SHOWN. DIMS OTHERWISE SPECIFIED IN THE SUBCONTRACT DIRECT SERIAL CABLE WILL BE SUPPLIED BY WILCOX.
 2. PERMANENT AND PERMANENT CABLE - WELDER SHALL BE SUPPLIED AND INSTALLED BY THE SUBCONTRACTOR AT 200 PACE INTERVALS AND AT 500' CHANGES IN DIRECTION OF TRENCHES AND WITHIN 25 FEET OF ANY CHANGE IN TRENCH DIRECTION. CABLE MARKER SHALL CONFORM TO FAA SPEC 150-109. (NOT REQUIRED FOR THIS PROJECT)
 3. POWER CABLES TO BE TERMINATED BY SUBCONTRACTOR. CABLES TO BE TAPED TO PROTECT OPEN ENDS. OPTICAL CABLES ARE MADE FROM SCOT ALUMINUM TUBING AND WILL BE BUDED IF BUDED. CABLE INSTALLATION TO BE INSPECTED BY THE PRIME CONTRACTOR BEFORE CONCOALMENT BY BACKFILLING. KINKING OR SHARP BENDS IN ANY CABLE SHALL REQUIRE REPLACEMENT OF THE CABLE.
 4. PRIMARY POWER 25 KVA 120/240V 60 HZ WITH STEP DOWN TRANSFORMER LOCATED ADJACENT TO LOCALIZER SHELTER.
 5. OPTICAL CABLES 4844-88 CUT TO LENGTH AND TERMINATED BY WILCOX.
 6. ANTENNA DISTRIBUTION UNIT CONDUITS CONTRACTOR SUPPLIED.

AS BUILT PLANS
 By *David W. Danner* PROJECT ENGINEER
 DATE 4/17/84

SITE LOCATION RUTLAND STATE AIRPORT
NORTH CLARENDON, VERMONT
 ADAP PROJECT NO. 8-50-0015-02

DRAWN BY <u>RD 10/82</u>		WILCOX ELECTRIC, INC. A Subsidiary of Northrop Corporation KANSAS CITY, MO. CODE IDENT NO. 65597	
DRAFTING APPROVAL I.E. APPROVAL T.E. APPROVAL S.E. APPROVAL CHECKED INSP.	NUMBER D 162-02-4	REV. A	CABLE TRENCHING DETAILS RUTLAND STATE AIRPORT
DATE 4/17/84	SHEET NO. SH 3 OF 15 SHEETS		

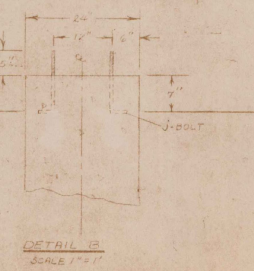
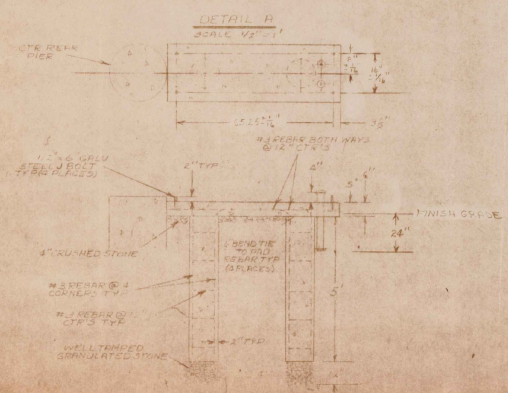
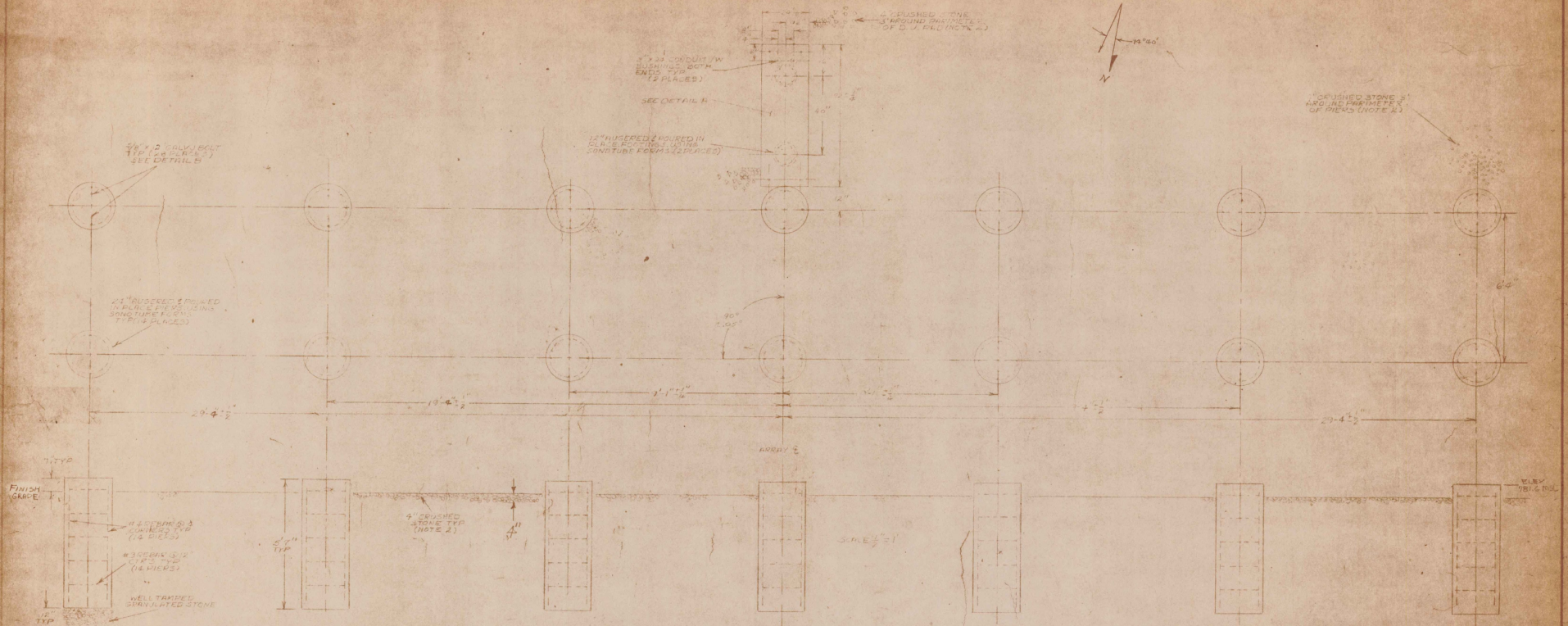


NOTE
 1 CABLES INSERTED IN PLYM.
 MUST BE CORE ELEMENT 2 LEVEL
 2 ANTENNA GROUNDING DETAILS SEE SHEET 14

AS BUILT PLANS
 BY *Quill W. Dames* PROJECT ENGINEER
 DATE 4/17/74

SITE LOCATION RUTLAND STATE AIRPORT
NORTH CLARENDON, VERMONT
 ADAP PROJECT NO. 8-50-0015-02

DRAWN BY <u>RP 1173</u>		WILCOX ELECTRIC, INC. KANSAS CITY, MO. A Subsidiary of Northrop Corporation CODE IDENT NO. 25597	
DESIGNED BY	APPROVED BY	MODEL <u>1203 LOCAL LEG ANTENNA</u>	ASSEMBLY & PRINCIPAL DIMENSIONS
DATE	DATE	NO. <u>D</u>	ISSUE <u>162-03-4</u>
APPROVAL	APPROVAL	BY	BY <u>A</u>
DATE	DATE	SH 4 OF 15 SHEETS	

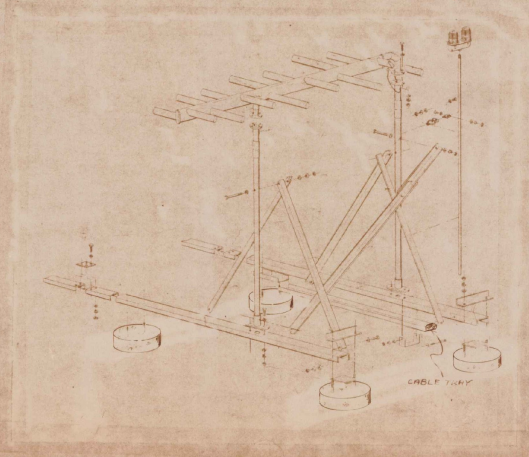
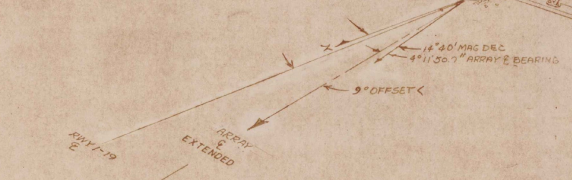
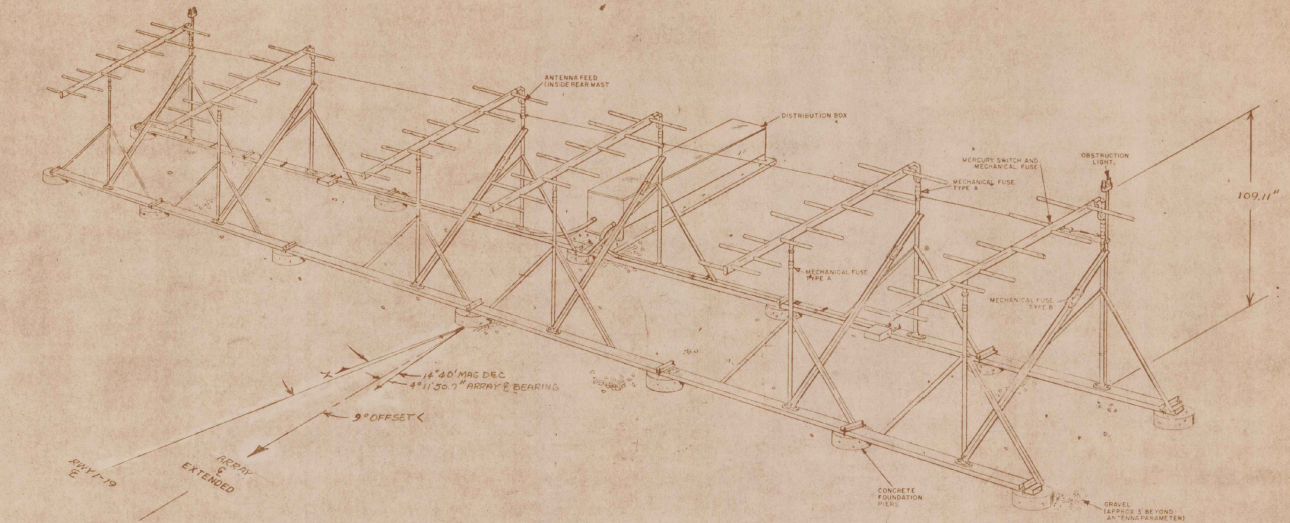


- NOTES:
1. ALL CONCRETE SHALL BE PLACED IN PLACE.
 2. ALL REINFORCING SHALL BE PLACED AS SHOWN BEFORE PLACING CONCRETE AND SHALL BE PROTECTED AS SHOWN.
 3. ALL DIMENSIONS SHALL BE TO FACE UNLESS OTHERWISE SPECIFIED.
 4. ALL DIMENSIONS SHALL BE TO FACE UNLESS OTHERWISE SPECIFIED.
 5. SPACING & ROCK SHALL BE SUCH THAT ALL DRAINAGE IS AWAY FROM SITE.
 6. ALL CONCRETE WORK SHALL CONFORM TO RC BLDG CODE (RCI-318-77).

AS BUILT PLANS
 BY WILCOX PROJECT ENGINEER
 DATE 4/11/78

SITE LOCATION RUTLAND STATE AIRPORT
NORTH CLARENDON, VERMONT
 ADAP PROJECT NO. 8-50-0015-02

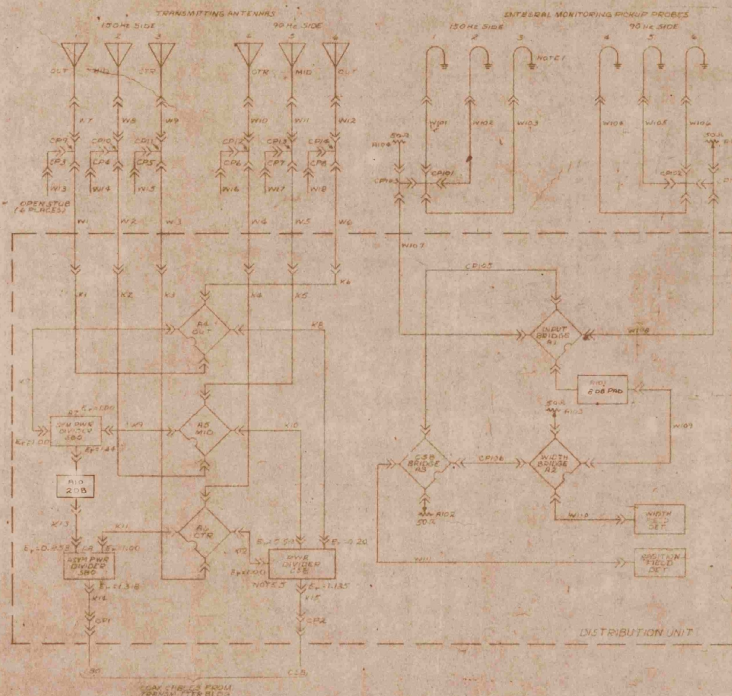
DRAWN BY <u>RP 11/78</u>	
CHECKED BY	
DATE	
SCALE	
NO.	
REV.	
DATE	
BY	
CHKD.	
DATE	
APP. BY	
DATE	
NO.	
REV.	
DATE	
BY	
CHKD.	
DATE	
APP. BY	
DATE	
NO.	
REV.	
DATE	
BY	
CHKD.	
DATE	
APP. BY	
DATE	
NO.	
REV.	
DATE	
BY	
CHKD.	
DATE	
APP. BY	
DATE	
NO.	
REV.	
DATE	
BY	
CHKD.	
DATE	
APP. BY	
DATE	
NO.	
REV.	
DATE	
BY	
CHKD.	
DATE	
APP. BY	
DATE	
NO.	
REV.	
DATE	
BY	
CHKD.	
DATE	
APP. BY	
DATE	
NO.	
REV.	
DATE	
BY	
CHKD.	
DATE	
APP. BY	
DATE	
NO.	
REV.	
DATE	
BY	
CHKD.	
DATE	
APP. BY	
DATE	
NO.	
REV.	
DATE	
BY	
CHKD.	
DATE	
APP. BY	
DATE	
NO.	
REV.	
DATE	
BY	
CHKD.	
DATE	
APP. BY	
DATE	
NO.	
REV.	
DATE	
BY	
CHKD.	
DATE	
APP. BY	
DATE	
NO.	
REV.	
DATE	
BY	
CHKD.	
DATE	
APP. BY	
DATE	
NO.	
REV.	
DATE	
BY	
CHKD.	
DATE	
APP. BY	
DATE	
NO.	
REV.	
DATE	
BY	
CHKD.	
DATE	
APP. BY	
DATE	
NO.	
REV.	
DATE	
BY	
CHKD.	
DATE	
APP. BY	
DATE	
NO.	
REV.	
DATE	
BY	
CHKD.	
DATE	
APP. BY	
DATE	
NO.	
REV.	
DATE	
BY	
CHKD.	
DATE	
APP. BY	
DATE	
NO.	
REV.	
DATE	
BY	
CHKD.	
DATE	
APP. BY	
DATE	
NO.	
REV.	
DATE	
BY	
CHKD.	
DATE	
APP. BY	
DATE	
NO.	
REV.	
DATE	
BY	
CHKD.	
DATE	
APP. BY	
DATE	
NO.	
REV.	
DATE	
BY	
CHKD.	
DATE	
APP. BY	
DATE	
NO.	
REV.	
DATE	
BY	
CHKD.	
DATE	
APP. BY	
DATE	
NO.	
REV.	
DATE	
BY	
CHKD.	
DATE	
APP. BY	
DATE	
NO.	
REV.	
DATE	
BY	
CHKD.	
DATE	
APP. BY	
DATE	
NO.	
REV.	
DATE	
BY	
CHKD.	
DATE	
APP. BY	
DATE	
NO.	
REV.	
DATE	
BY	
CHKD.	
DATE	
APP. BY	
DATE	
NO.	
REV.	
DATE	
BY	
CHKD.	
DATE	
APP. BY	
DATE	
NO.	
REV.	
DATE	
BY	
CHKD.	
DATE	
APP. BY	
DATE	
NO.	
REV.	
DATE	
BY	
CHKD.	
DATE	
APP. BY	
DATE	
NO.	
REV.	
DATE	
BY	
CHKD.	
DATE	
APP. BY	
DATE	
NO.	
REV.	
DATE	
BY	
CHKD.	
DATE	
APP. BY	
DATE	
NO.	
REV.	
DATE	
BY	
CHKD.	
DATE	
APP. BY	
DATE	
NO.	
REV.	
DATE	
BY	
CHKD.	
DATE	
APP. BY	
DATE	
NO.	
REV.	
DATE	
BY	
CHKD.	
DATE	
APP. BY	
DATE	
NO.	
REV.	
DATE	
BY	
CHKD.	
DATE	
APP. BY	
DATE	
NO.	
REV.	
DATE	
BY	
CHKD.	
DATE	
APP. BY	
DATE	
NO.	
REV.	
DATE	
BY	
CHKD.	
DATE	
APP. BY	
DATE	
NO.	
REV.	
DATE	
BY	
CHKD.	
DATE	
APP. BY	
DATE	
NO.	
REV.	
DATE	
BY	
CHKD.	
DATE	
APP. BY	
DATE	
NO.	
REV.	
DATE	
BY	
CHKD.	
DATE	
APP. BY	
DATE	
NO.	
REV.	
DATE	
BY	
CHKD.	
DATE	
APP. BY	
DATE	
NO.	
REV.	
DATE	
BY	
CHKD.	
DATE	
APP. BY	
DATE	
NO.	
REV.	
DATE	
BY	
CHKD.	
DATE	
APP. BY	
DATE	
NO.	
REV.	
DATE	
BY	
CHKD.	
DATE	
APP. BY	
DATE	
NO.	
REV.	
DATE	
BY	
CHKD.	
DATE	
APP. BY	
DATE	
NO.	
REV.	
DATE	
BY	
CHKD.	
DATE	
APP. BY	
DATE	
NO.	
REV.	
DATE	
BY	
CHKD.	
DATE	
APP. BY	
DATE	
NO.	
REV.	
DATE	
BY	
CHKD.	
DATE	
APP. BY	
DATE	
NO.	
REV.	
DATE	
BY	
CHKD.	
DATE	
APP. BY	
DATE	
NO.	
REV.	
DATE	
BY	
CHKD.	
DATE	
APP. BY	
DATE	
NO.	
REV.	
DATE	
BY	
CHKD.	
DATE	
APP. BY	
DATE	
NO.	
REV.	
DATE	
BY	
CHKD.	
DATE	
APP. BY	
DATE	
NO.	
REV.	
DATE	
BY	
CHKD.	
DATE	
APP. BY	
DATE	
NO.	
REV.	
DATE	
BY	
CHKD.	
DATE	
APP. BY	
DATE	
NO.	
REV.	
DATE	
BY	
CHKD.	
DATE	
APP. BY	
DATE	
NO.	
REV.	
DATE	
BY	
CHKD.	
DATE	
APP. BY	
DATE	
NO.	
REV.	
DATE	
BY	
CHKD.	
DATE	
APP. BY	
DATE	
NO.	
REV.	
DATE	
BY	
CHKD.	
DATE	
APP. BY	
DATE	
NO.	
REV.	
DATE	
BY	
CHKD.	
DATE	
APP. BY	
DATE	
NO.	
REV.	
DATE	
BY	
CHKD.	
DATE	
APP. BY	
DATE	
NO.	
REV.	
DATE	
BY	
CHKD.	
DATE	
APP. BY	
DATE	
NO.	
REV.	
DATE	
BY	
CHKD.	
DATE	
APP. BY	
DATE	
NO.	
REV.	
DATE	
BY	
CHKD.	
DATE	
APP. BY	
DATE	
NO.	
REV.	
DATE	
BY	
CHKD.	
DATE	
APP. BY	
DATE	
NO.	
REV.	
DATE	
BY	
CHKD.	
DATE	
APP. BY	
DATE	
NO.	
REV.	
DATE	
BY	
CHKD.	
DATE	
APP. BY	
DATE	
NO.	
REV.	
DATE	
BY	
CHKD.	
DATE	
APP. BY	
DATE	
NO.	
REV.	
DATE	
BY	
CHKD.	
DATE	
APP. BY	
DATE	
NO.	
REV.	
DATE	
BY	
CHKD.	
DATE	
APP. BY	
DATE	
NO.	
REV.	
DATE	
BY	
CHKD.	
DATE	
APP. BY	
DATE	
NO.	
REV.	
DATE	
BY	
CHKD.	
DATE	
APP. BY	
DATE	
NO.	
REV.	
DATE	
BY	
CHKD.	
DATE	
APP. BY	
DATE	
NO.	
REV.	
DATE	
BY	
CHKD.	
DATE	
APP. BY	
DATE	
NO.	
REV.	
DATE	
BY	
CHKD.	
DATE	
APP. BY	
DATE	
NO.	



AS BUILT PLANS
 BY W. D. DODD PROJECT ENGINEER
 DATE 3/17/74

SITE LOCATION RUTLAND STATE AIRPORT
NORTH CLARENDON, VERMONT
 ADAP PROJECT NO. 8-50-0015-02

DRAWN BY <u>RP 1172</u>		WILCOX ELECTRIC, INC.	
DATE	NO.	KANSAS CITY, MO	
REVISION	DESCRIPTION	A Subsidiary of Northrup Corporation	
REVISION	DESCRIPTION	CODE IDENT NO. 65592	
REVISION	DESCRIPTION	MODEL <u>1208 LOCALIZED</u>	
REVISION	DESCRIPTION	<u>ANTENNA</u>	
REVISION	DESCRIPTION	NO.	REV.
REVISION	DESCRIPTION	<u>D</u>	<u>162-05-4</u>
REVISION	DESCRIPTION	<u>A</u>	
REVISION	DESCRIPTION	SH <u>6</u> OF <u>15</u> SHEETS	



DESCRIPTION AND MONITORING CABLES AND ADAPTERS

Symbol	Description	Length
K1-K6	RG-214/U coax with 1 each UC-11879/U female type N flanged connector and 1 each UC-11879/U male type N straight conn.	28 1/2"
K7	RG-214/U coax with 2 ea. UC-11858/U male type N straight connector.	53 1/2"
K8	Similar to K7.	19 1/2"
K9	Similar to K7.	33 1/8"
K10	Similar to K7.	23 7/8"
K11	RG-214/U coax with 1 ea. UC-11838/U male type N straight connector and 1 ea. Ted # 7-10-5 or Great #3423 male type N right angle connector.	134 5/8"
K12	Similar to K7.	54"
K13	RG-214/U coax with 1 ea. UC-1170/U female type N straight connector and 1 ea. UC11858/U male type N straight conn.	18"
K14	Similar to K13.	65 3/16"
K15	Similar to K13.	60 1/16"
W1-W6	RG-214/U coax with 1 ea. UC11858/U male type N straight connector and 1 ea. Ted #7-10-5 or Great #3423 male type N right angle connector.	18"
W7-W12	RG-214/U coax with 2 ea. UC11858/U male type N straight connectors.	16"
W13-W18	RG-223/U coax with 1 ea. King P38-55-51 male type N straight connector. Cable to left open on one end and field cut for lowest cover. Final length approx. 10".	52 1/2"
W19, W20	RG-214/U coax with 1 ea. UC-11458/U male type N straight connector and 1 ea. Ted #7-10-5 or Great #3423 male type N right angle connector.	25"
W21-W28	RG-214/U coax with 2 ea. Ted #7-10-5 or Great #3423 male type N right angle connectors.	25"
W29-W38	RG-214/U coax with 2 ea. UC11858/U male type N straight connectors.	25 ft.
W39	Similar to W29-W38.	75"
W40-W41	Similar to W29-W38.	40"

II Connectors & Adapters

Symbol	Description	Wilcox Part No.
CP1-CP3	Type N Coaxial "I" adapter UC-27C/U	87504-0003
CP4-CP14	Type N Coaxial "T" adapter, all female connector, UC-18A/U	87501-0000
CP15-CP17	Type N Coaxial "T" adapter, all female connectors	87501-0000
CP18-CP19	Type N Coaxial "T" adapter, 2 female and 1 male conn., UC1079/U	87501-0000
CP20-CP28	Type N coaxial adapter, double male connectors, UC578/	87501-0000
CP29-CP38	SAME AS CP20	

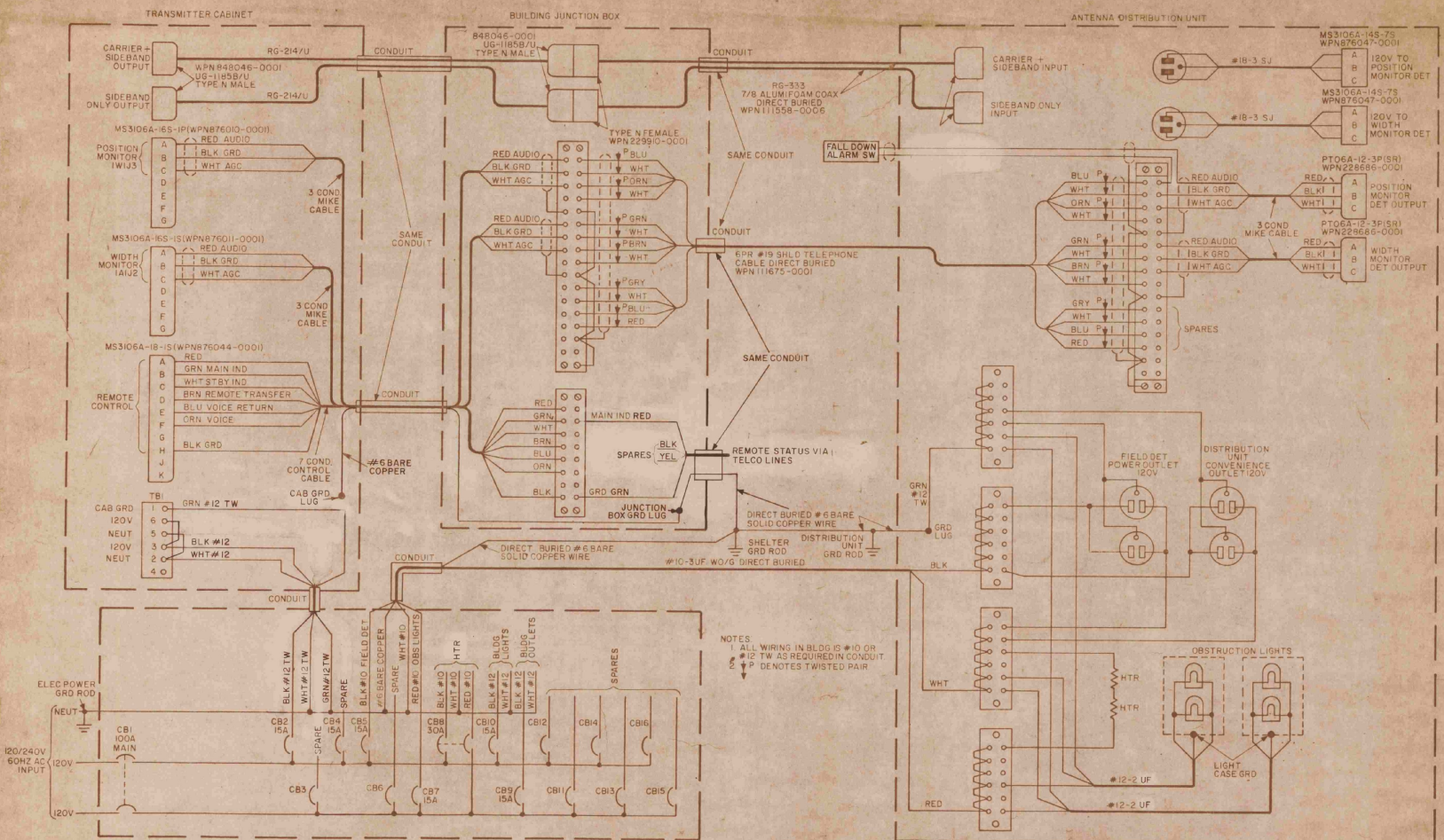
NOTES

- Probes are received with 50 OHM terminating resistors installed.
- Abbreviations:
 CS - Center OUT - Outer ASY - Asymmetrical
 SYM - Symmetrical MID - Middle SB - Sidelobe Only
 CS - Carrier Plus Sidelobe

AS BUILT PLANS
 BY Charles J. D'Amico PROJECT ENGINEER
 DATE 4/11/74

SITE LOCATION: RUTLAND STATE AIRPORT
 NORTH CLARENDON, VERMONT
 ADAP PROJECT NO. 8-50-0015-82

WILCOX ELECTRIC, INC. A Subsidiary of Northern Corporation KANSAS CITY, MO. CODE IDENT NO. 63597	
DESIGNED BY: <u>RP 10/72</u>	DATE: <u>162-06-4</u>
CHECKED BY: <u>[Signature]</u>	REV: <u>7</u> OF <u>15</u> SHEETS
APPROVED BY: <u>[Signature]</u>	
MODEL: <u>MODEL 1203 LOCALIZER ANTENNA RF CABLEING & PARTS LIST</u>	

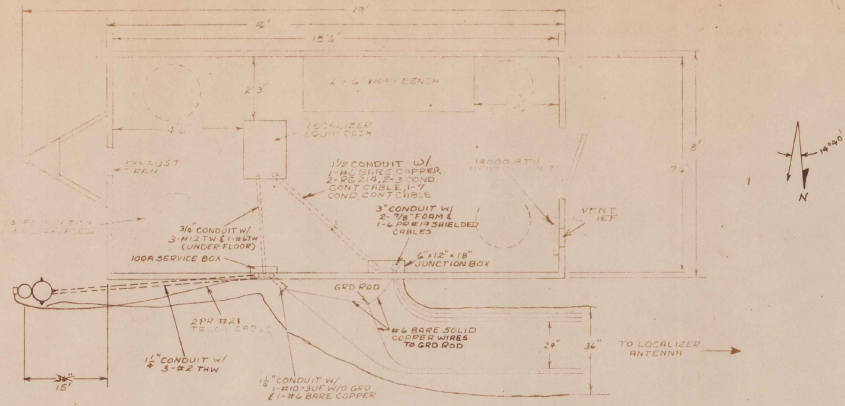


NOTES
 1. ALL WIRING IN BLDG IS #10 OR #12 TW AS REQUIRED IN CONDUIT
 2. P DENOTES TWISTED PAIR

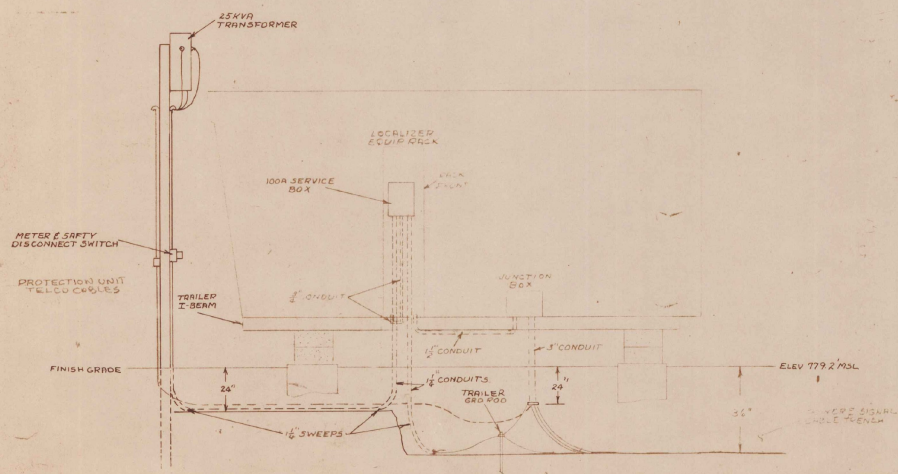
AS BUILT PLANS
 BY W.L.D. AMBRO PROJECT ENGINEER
 DATE 4/17/74

SITE LOCATION RUTLAND STATE AIRPORT
NORTH CLARENDON, VERMONT
 ADAP PROJECT NO. 8-50-0015-02

WILCOX ELECTRIC, INC. A Subsidiary of Northrop Corporation KANSAS CITY, MO. CODE IDENT NO. 0397	
DRAWN BY <u>RP 1172</u> CHECKED BY APPROVAL BY DATE REVISION DATE	MODEL 1203 LOCALIZER ANTENNA RF & AC SYSTEM CABLING
SHEET NO. <u>D</u> OF <u>162-07-4</u>	SHEET NO. <u>8</u> OF <u>15</u> SHEETS



SCALE 1/2" = 1'-0"

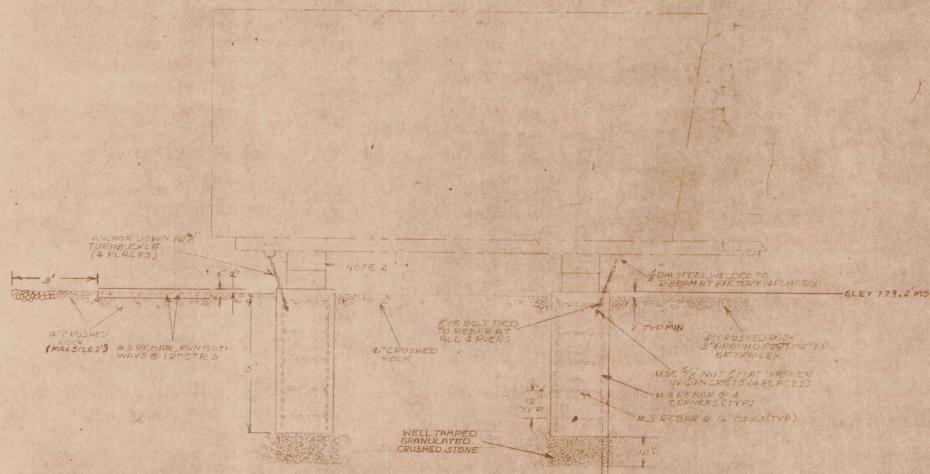
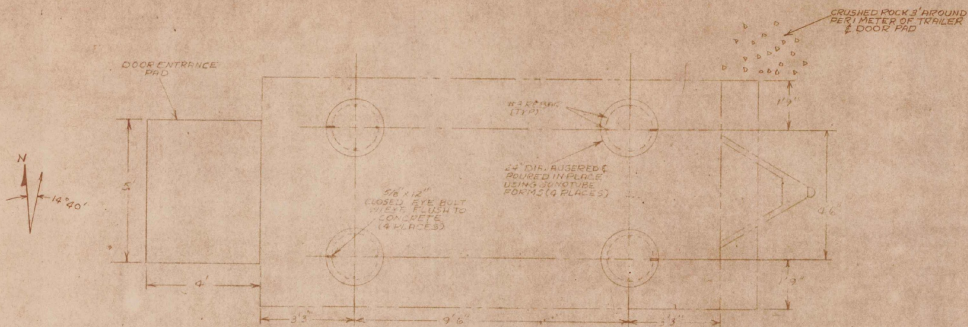


- NOTES:
1. ALL CONDUITS MUST BE TERMINATED WITH BUSHING FOR CABLE PROTECTION & BE BURIED MINIMUM 1" BELOW GRADE.
 2. ALL WIRING MUST MEET NATIONAL ELECTRIC CODE.
 3. ALL CONDUITS MUST BE GALV STEEL RIGID.
 4. ALL BUSHINGS INSIDE SHELTER MUST BE GROUND TO GROUND ROD W/ # 4 BARE SOLID COPPER.

AS BUILT PLANS
BY *Walter Dimuccio* PROJECT ENGINEER
DATE 4/1/74

SITE LOCATION: RUTLAND STATE AIRPORT
NORTH CLARENDON VERMONT
ADAP PROJECT NO. 8-50-0015-02

WILCOX ELECTRIC, INC. A Subsidiary of Northrup Corporation CODE IDENT NO. 05597	
DRAWN BY: R.E. 2/73 CHECKED BY: [Signature] APPROVED BY: [Signature]	TITLE: 8-19 TRAILER TRENCHING, FLOOR PLAN & CONDUIT DETAILS (MODEL 1203 LOCAL ZER ANTENNA)
SHEET NO.: D PROJECT NO.: 162-08-4	SHEET NO.: B TOTAL SHEETS: 9 OF 10 SHEETS



- NOTES:
1. ALL CONCRETE SHALL BE PROPERLY CURED.
 2. ALL CONCRETE SHALL BE PROPERLY FINISHED.
 3. CRACKS IN CONCRETE SHALL BE PATCHED WITH PORTLAND CEMENT MORTAR.
 4. AFTER INSTALLING TURNBUCKLES LOCK SECURELY.

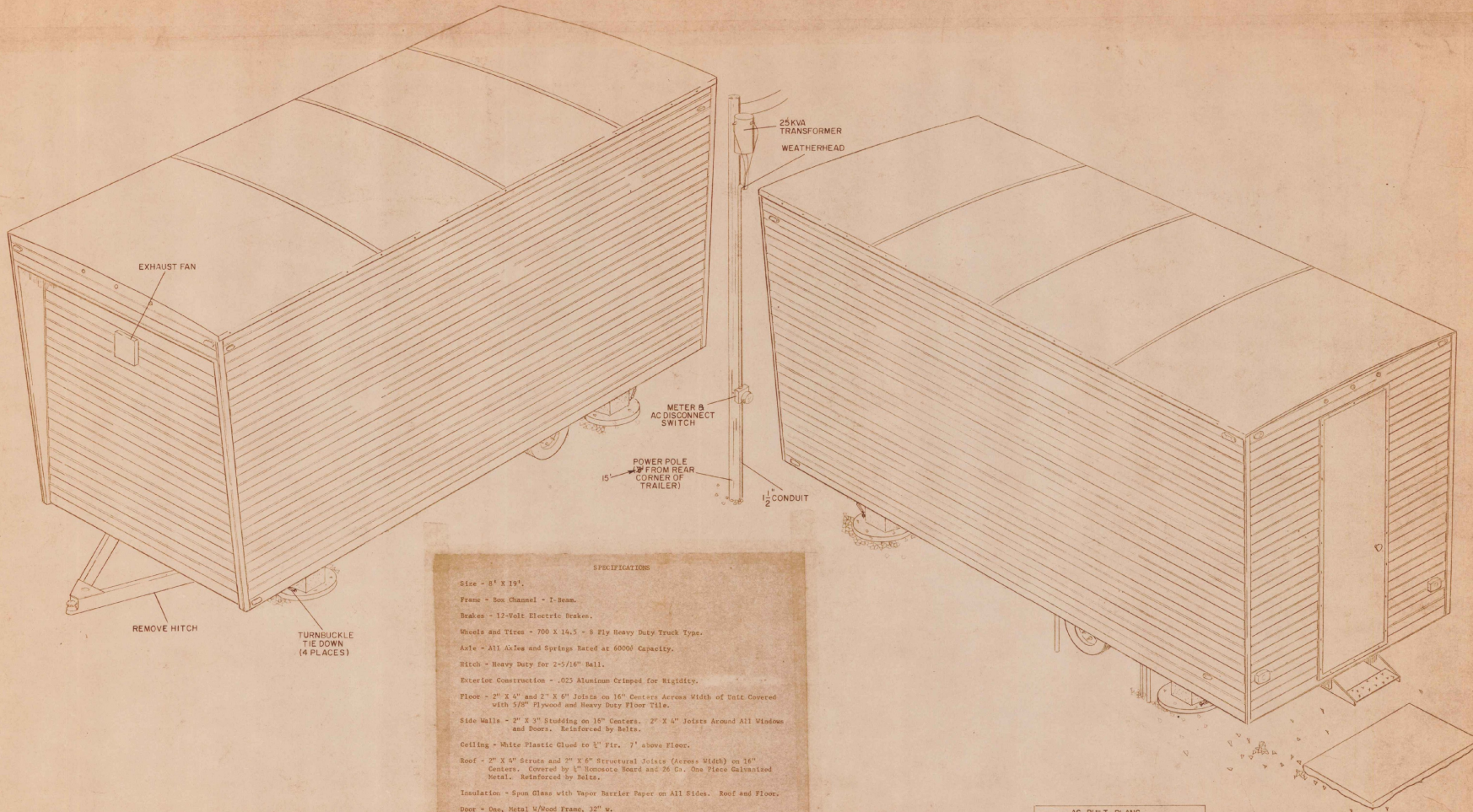
AS BUILT PLANS
 BY **W.D. DUMAS** PROJECT ENGINEER
 DATE **4-17-74**

SITE LOCATION RUTLAND STATE AIRPORT
NORTH CLARENDON, VERMONT
 ADAP PROJECT NO. 8-50-0015-02

WILCOX ELECTRIC, INC.
 A Subsidiary of Northrop Corporation
 CODE IDENT NO. 8557

DESIGN BY	W.D. 11/72
DRAFTING	
APPROVAL	
REVISION	NOV 11/72
DATE	
CODE	
NO.	
REV	

5'x9' TRAILER FOUNDATION
 DETAILS
 D 162-09-4 A
 SH 10 OF 15 SHEETS



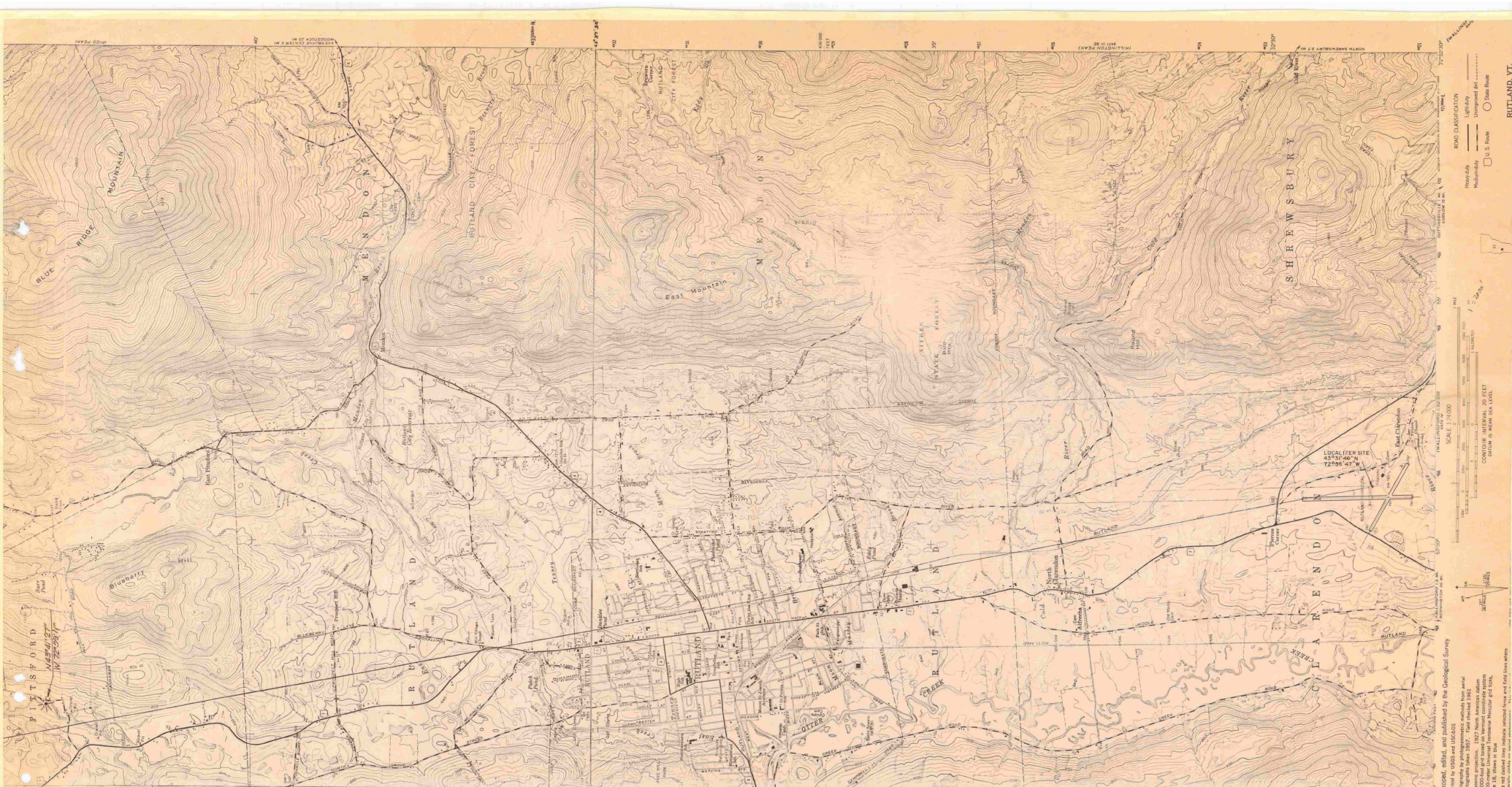
SPECIFICATIONS

Size - 8' X 19'.
 Frame - Box Channel - I-Beam.
 Brakes - 12-Volt Electric Brakes.
 Wheels and Tires - 700 X 14.5 - 8 Ply Heavy Duty Truck Type.
 Axle - All Axles and Springs Rated at 6000# Capacity.
 Hitch - Heavy Duty for 2-5/16" Ball.
 Exterior Construction - .025 Aluminum Crisped for Rigidity.
 Floor - 2" X 4" and 2" X 6" Joists on 16" Centers Across Width of Unit Covered with 5/8" Plywood and Heavy Duty Floor Ties.
 Side Walls - 2" X 3" Studding on 16" Centers. 2" X 4" Joists Around All Windows and Doors. Reinforced by Belts.
 Ceiling - White Plastic Glued to 1" Fir. 7' above Floor.
 Roof - 2" X 6" Struts and 2" X 6" Structural Joists (Across Width) on 16" Centers. Covered by 1/2" Gypsum Board and 26 Ga. One Piece Galvanized Metal. Reinforced by Belts.
 Insulation - Spun Glass with Vapor Barrier Paper on All Sides. Roof and Floor.
 Door - One, Metal w/Wood Frame, 32" w.
 Interior Finish - 1/2" Grade "A" Pre-Finished Hard Plywood.
 Electrical - 120/240 Volt 100A Service, wired with #12-2/W Ground.
 Lighting - Dual 4' Long Fluorescent Lighting Fixtures Over All Working Areas.
 Work Bench - 2' X 6' Covered w/Formica.
 Heating - Electric wall furnace, 14,000 BTU
 Wind Load - 100 MPH
 Anchors - 4 U-Bolts, welded to I-Beams, tensile strength, 5,000 ft. lbs. each.
 Color - Stripes w/ International Orange & White

AS BUILT PLANS
 BY W. D. DUNN PROJECT ENGINEER
 DATE 4/17/74

SITE LOCATION RUTLAND STATE AIRPORT
NORTH CLARENDON, VERMONT
 ADAP PROJECT NO. 8-50-0015-02

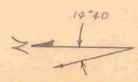
DRAWN BY <u>PP 2173</u>		WILCOX ELECTRIC, INC. KANSAS CITY, MO. A Subsidiary of Northrop Corporation CODE IDENT NO. 65597	
DRAFTING	APPROVAL	8' X 19' TRAILER w/SPECIFICATIONS	
DESIGN	APPROVAL	SIZE <u>D</u>	NUMBER <u>162-10-4</u>
DATE	SCALE	REV. <u>A</u>	
SH 11 OF 15 SHEETS			



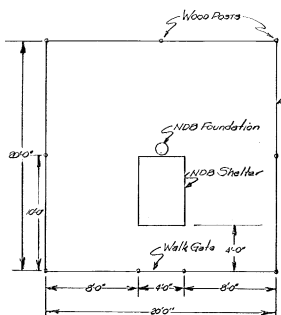
AS BUILT PLANS
 BY Walter D. Dumas PROJECT ENGINEER
 DATE 4/1/79

SITE LOCATION RUTLAND STATE AIRPORT
NORTH CLARENDON, VERMONT
 ADAP PROJECT NO. 8-50-0015-02

DRAWN BY <u>RR 4/03</u>		WILCOX ELECTRIC, INC. A Subsidiary of Kansas City, Mo. A Subsidiary of Northrup Corporation CODE IDENT NO. 65597	
DRAFTING APPROVAL		NOB LOCALIZER LOCATIONS ON NATIONAL GEOLOGICAL SURVEY MAP	
E.E. APPROVAL		SIZE <u>D</u>	NUMBER <u>162-11-4</u>
E.E. APPROVAL		REV.	
CONF. APPROVAL		SH 12 OF 15 SHEETS	
CONF. APPROVAL			
REVISION			
REV. DATE, P.N.	SCALE <u>3/4"</u>		

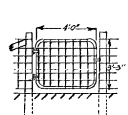


RUTLAND, VT.
 ROAD CLASSIFICATION
 Lightly Unimproved Rd
 Mainly
 U.S. Route
 State Route
 SCALE 1:1000
 CONTOUR INTERVAL 20 FEET
 LOCALITY SITE
 43°53'46" N
 72°56'47" W
 LOCALIZER LOCATIONS
 ON NATIONAL GEOLOGICAL SURVEY
 MAP
 NOB LOCALIZER LOCATIONS
 ON NATIONAL GEOLOGICAL SURVEY
 MAP
 SIZE D NUMBER 162-11-4
 REV.
 SH 12 OF 15 SHEETS

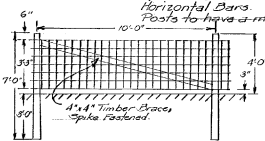


WOVEN WIRE FENCING DIAGRAM
AROUND NDB
(By V.A.B.'s Sub Contractor)

Note: Use caution to prevent
piling fence posts on top
of copper counterpoise!

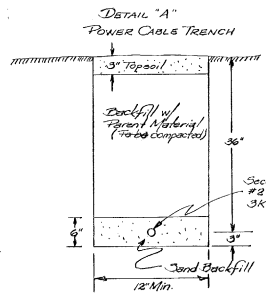


WALK GATE FOR
WOVEN WIRE
FENCES



WOVEN WIRE FENCE
w/ WOOD POSTS

Frames for gates shall be made
from steel tubing not less than
1 3/8" O.D., with 3/8" wall thickness

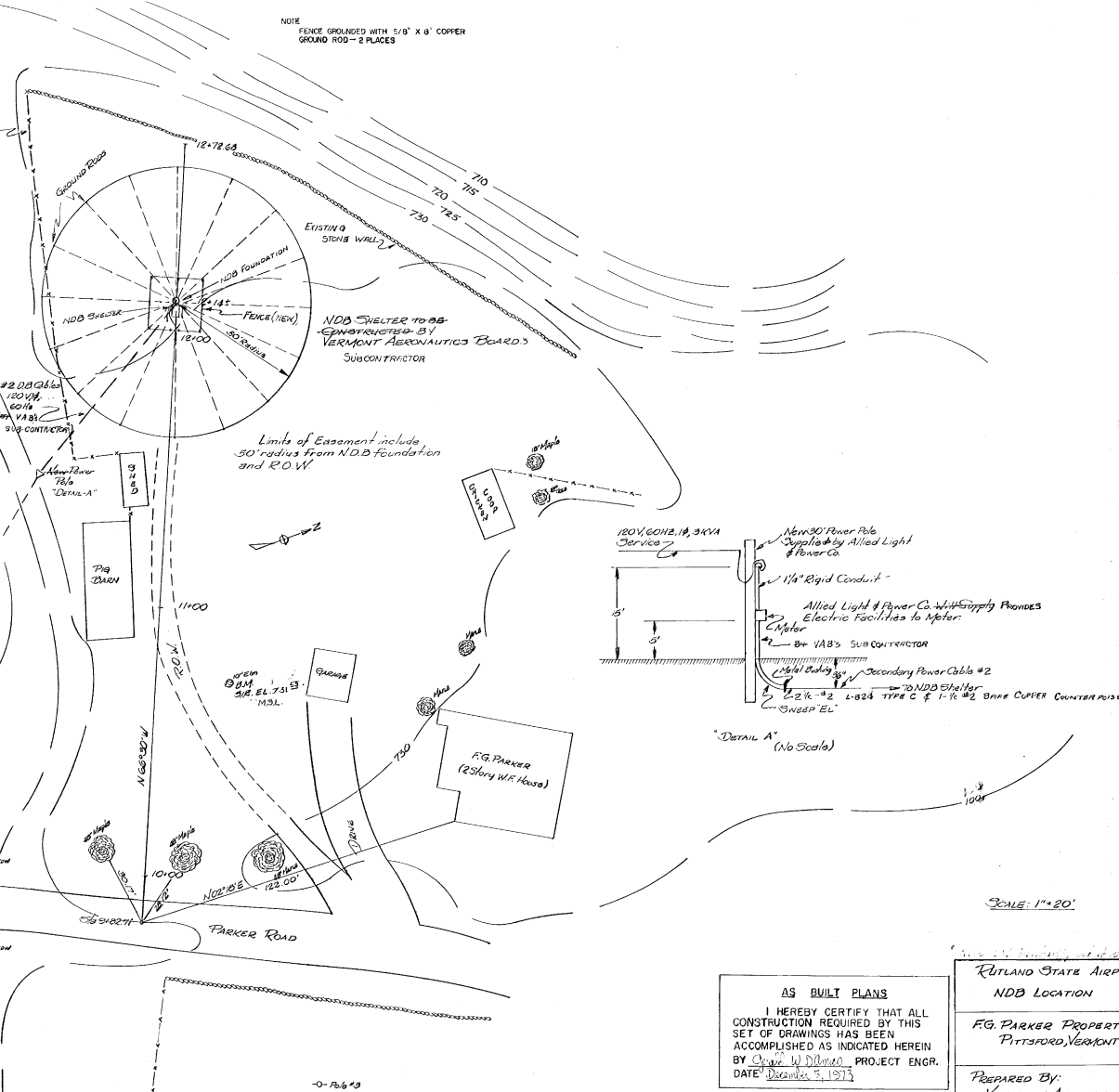


DETAIL "A"
POWER CABLE TRENCH

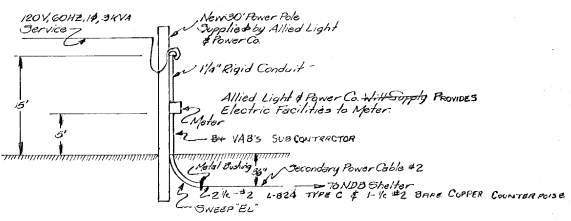
POWER LINE AND POLES
TO BE INSTALLED BY
ALLISON POWER & LIGHT CO.,
PITTSFORD, VERMONT

Existing
Pole #2
w/ Transformer

NOTE
FENCE GROUNDED WITH 5/8" X 8' COPPER
GROUND ROD - 2 PLACES



Limits of Easement include
50' radius from NDB Foundation
and R.O.W.

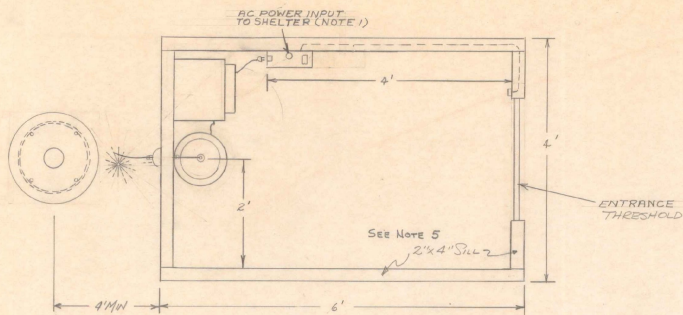


"DETAIL A"
(No Scale)

SCALE: 1"=20'

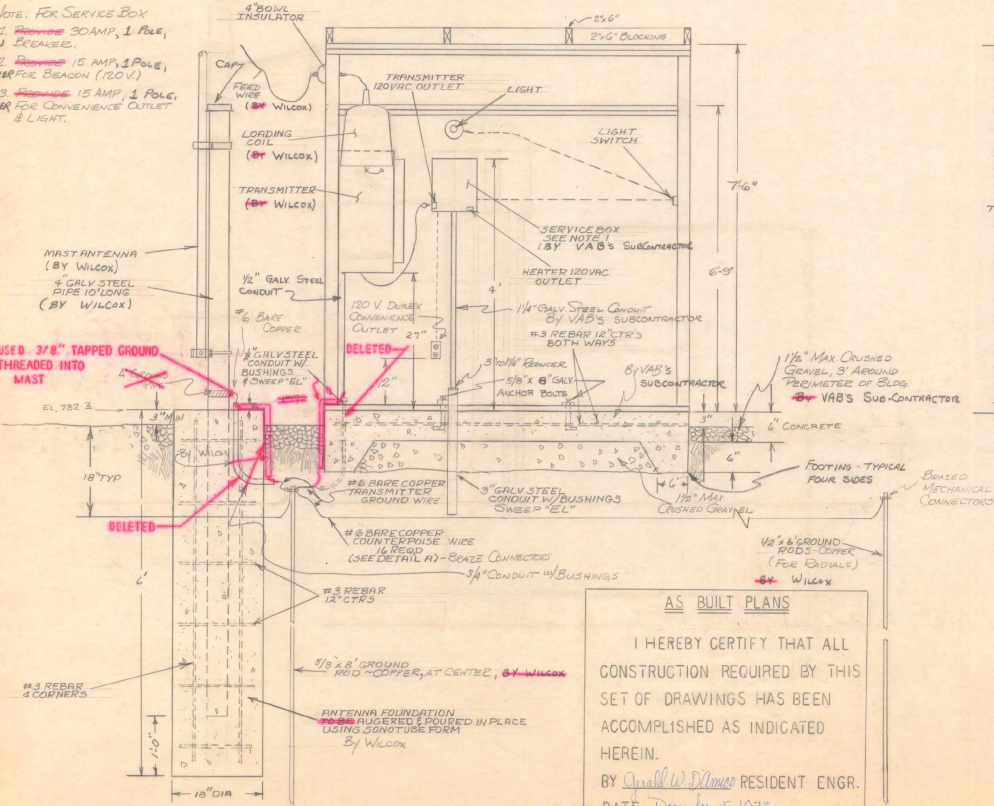
AS BUILT PLANS
I HEREBY CERTIFY THAT ALL
CONSTRUCTION REQUIRED BY THIS
SET OF DRAWINGS HAS BEEN
ACCOMPLISHED AS INDICATED HEREIN
BY *Charles W. Dillman* PROJECT ENGR.
DATE: December 5, 1973

RUTLAND STATE AIRPORT
NDB LOCATION
EG PARKER PROPERTY
PITTSFORD, VERMONT
PREPARED BY:
VERMONT AERONAUTICS
BOARD
APRIL 1973



NOTE: ORIENT ANTEENNA SO THAT IT CAN SWING DOWN FOR MAINTENANCE

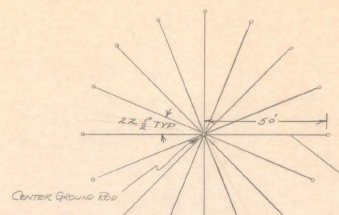
- NOTE: FOR SERVICE BOX
1. ~~REMOVE~~ 30 AMP, 1 POLE, MAIN BREAKER.
 2. ~~REMOVE~~ 15 AMP, 1 POLE, BREAKER FOR BEACON (120V)
 3. ~~REMOVE~~ 15 AMP, 1 POLE, BREAKER FOR CONVENIENCE OUTLET & LIGHT.



AS BUILT PLANS

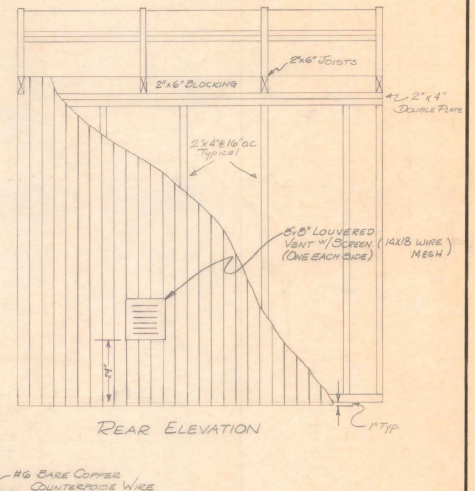
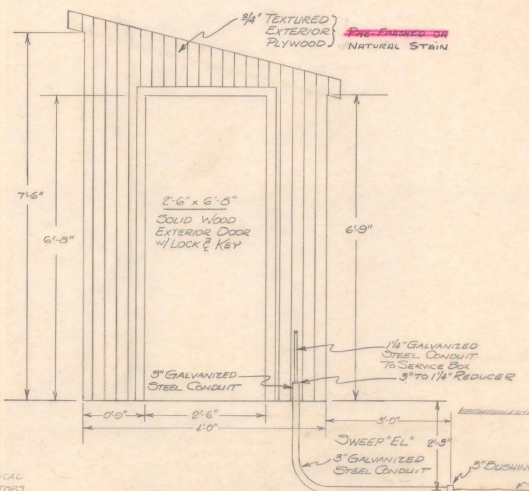
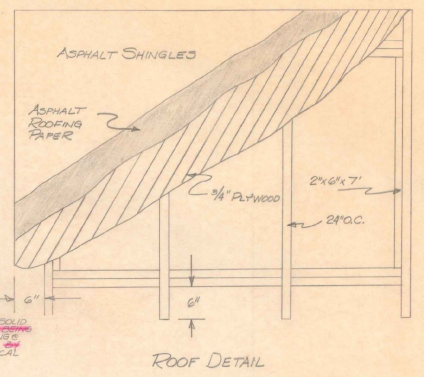
I HEREBY CERTIFY THAT ALL CONSTRUCTION REQUIRED BY THIS SET OF DRAWINGS HAS BEEN ACCOMPLISHED AS INDICATED HEREIN.

BY *Arnold W. Dimes* RESIDENT ENGR.
DATE *December 5, 1973*



NOTE: PLACE GROUND WIRE FOR THE CONSTRUCTION OF SHEETER (COUNTERPOISE) #GROUNDING BY WILCOX.

GROUND WIRE ~~SHOULD~~ ROUTED AROUND PROPOSED SHELTER - SEE PAGE 13 SHEET.



- NOTES:
1. PRIMARY POWER TO SHELTER ~~SHOULD~~ 120VAC, 60HZ, 3XVA SERVICE, WITH SEPARATE CIRCUITS FOR TRANSMITTER & HEATER CONVENIENCE OUTLETS.
 2. CONCRETE ~~SHOULD~~ BE 3000 PSI ~~STRENGTH~~ WITH MAXIMUM ~~SLAB~~ THICKNESS ~~SHOULD~~ NOT EXCEED 4\"/>

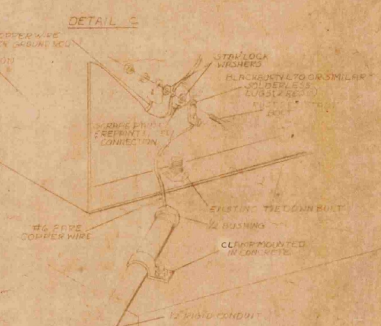
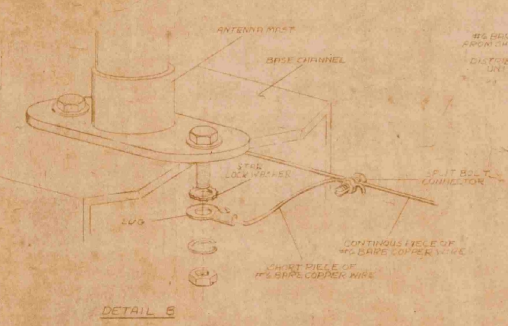
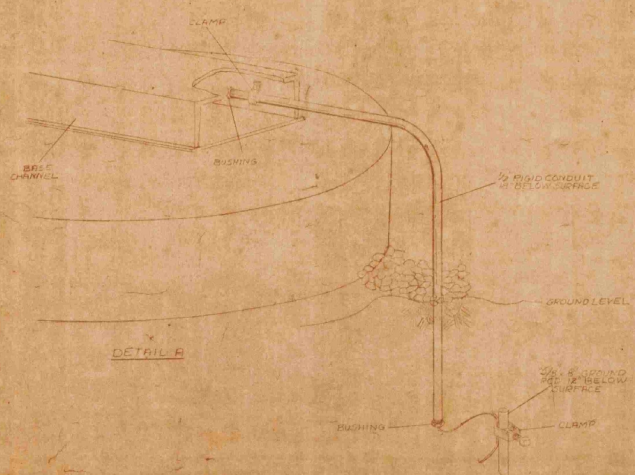
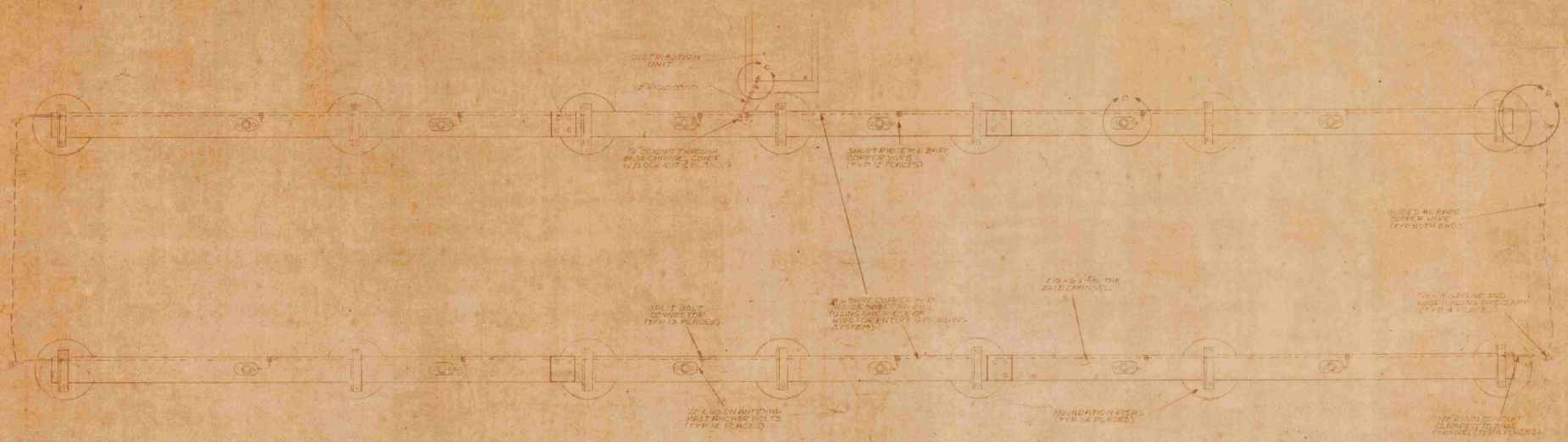
SITE LOCATION RUTLAND STATE AIRPORT
NORTH CLARENDON, VERMONT

ADAP PROJECT NO. 8-50-0015-02

DRAWN BY		SCALE	
APPROVAL	DATE	NO. 162-13-4	REV.
APPROVAL	DATE	SH 14 OF 15 SHEETS	

WILCOX ELECTRIC, INC.
A Subsidiary of Northrop Corporation
CODE IDENT NO. 65997

NDB FOUNDATION, COUNTERPOISE & POWER DETAILS



AS BUILT PLANS
 BY *Charles DeMuro* PROJECT ENGINEER
 DATE 4/1/74

SITE LOCATION RUTLAND STATE AIRPORT
NORTH CLARENDON, VERMONT
 ADAP PROJECT NO. 8-50-0015-02

DRAWN BY <u>RA 2/73</u>	
DESIGN APPROVAL	DATE
CHECK APPROVAL	DATE
PROJECT APPROVAL	DATE
DATE	NO.
D 162-14-4	
SH 15 OF 15 SHEETS	

WILCOX ELECTRIC, INC.
 A Subsidiary of Northrop Corporation
 CODE IDENT NO. 05397
 MODEL 1203 LOCALIZED ANTENNA
 ARRAY GROUNDING DETAILS