

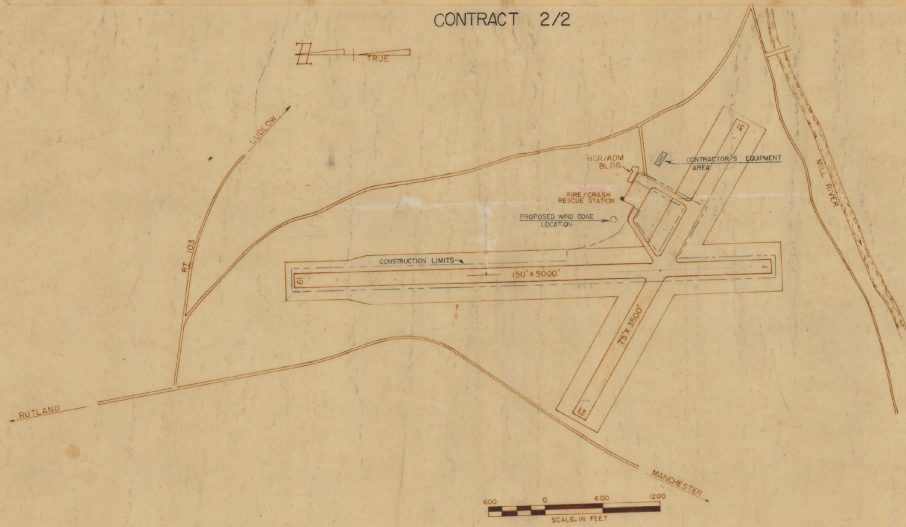
INDEX	
SHEET NO.	DESCRIPTION
1	TITLE SHEET
2	RUNWAY LIGHTING LAYOUT (PHASE I)
3	LIGHTING DETAILS
4	TAXIWAY LIGHTING LAYOUT (PHASE II)
5	WIRING DETAILS

RUTLAND STATE AIRPORT CLARENDON, VERMONT

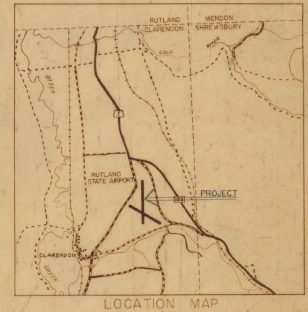
INSTALLATION OF
RUNWAY LIGHTING SYSTEM
(TO INCLUDE MEDIUM INTENSITY RUNWAY AND
TAXIWAY LIGHTS AND LIGHTED TWELVE FOOT
WIND CONE.)
ADAP PROJECT NO. 6-50-0015-06

AS BUILT PLANS
I hereby certify that all the construction
required by this set of contract documents has been
accomplished as indicated herein.
By: *Charles W. DeB...*
Date: 2/27/75

CONTRACT 2/2



ESTIMATED QUANTITIES			
DESCRIPTION	EST. QUANTITY	FINAL QUANTITY	
1. L-125 MRL (CLEAR LENS), STAKE MOUNTED	26 EA.	26 EA.	
18. L-125 MRL (CLEAR/YELLOW LENS), STAKE MTD.	19 EA.	19 EA.	
2. L-125 MRL (CLEAR LENS) BASE MTD.	4 EA.	4 EA.	
3. L-125 MRL (BLUE FILTER) STAKE MTD.	50 EA.	50 EA.	
4. L-125 MRL (RED/GREEN FILTER) STAKE MTD.	16 EA.	16 EA.	
5. L-108 CABLE TRENCH	15,100 LF.	15,250 LF.	
6. L-108 1/2" x 1/2" x 1/2" SKV, TYPE 'C'	20,000 LF.	20,440 LF.	
7. L-108 1/2" x 1/2" BASE COPPER COUNTERPOISE	15,100 LF.	16,450 LF.	
8. L-109 MODIFICATIONS TO AIRPORT VAULT	LUMP SUM	1 L.S.	
9. L-107 LIGHTED 12' WIND CONE	1 EACH	1 EA.	
10. L-110 3" W x 4" AIRPORT ILS ELEC. DUCT	380 LR.	643 LF.	
24. L-125 MRL (CLEAR/YELLOW LENS) BASE MTD.	2 EA.	2 EA.	
32. L-125 MRL (BLUE FILTER) BASE MTD.	2 EA.	2 EA.	

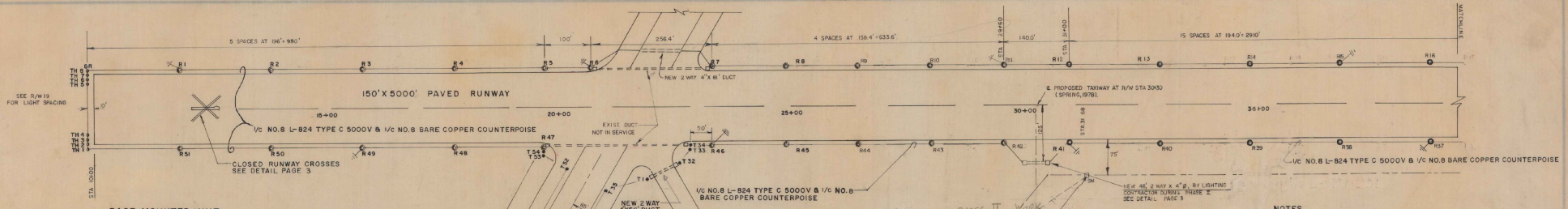


REVISIONS	
DESCRIPTION	DATE

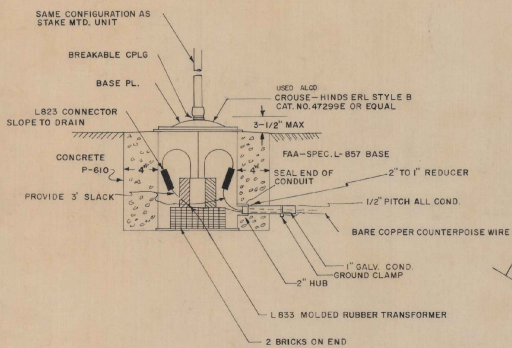
U.S. DEPARTMENT OF TRANSPORTATION
FEDERAL AVIATION ADMINISTRATION
APPROVED: _____ DATE: _____
CHIEF ENGINEERING BRANCH
AIRPORTS DIVISION

RUTLAND STATE AIRPORT
CLARENDON, VERMONT
DEPARTMENT OF AERONAUTICS
APPROVED: _____ DATE: _____
COMMISSIONER
AIRPORT ENGR.

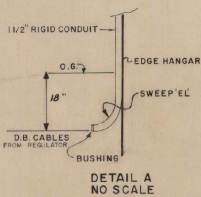
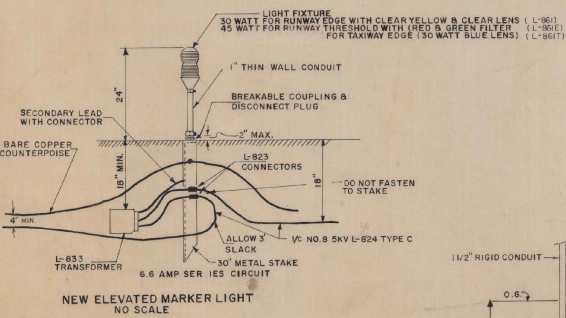
STATE OF VERMONT
AGENCY OF TRANSPORTATION
DEPARTMENT OF AERONAUTICS
MONTPELIER, VERMONT
WAIL O. LEACH — ENGR
DATE: SEPT, 1977



BASE MOUNTED UNIT



STAKE MOUNTED UNIT

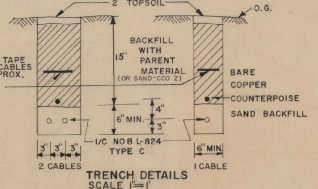
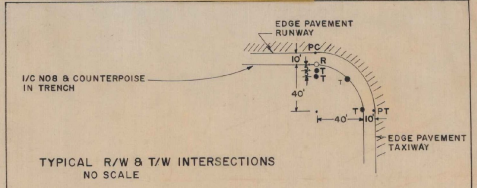
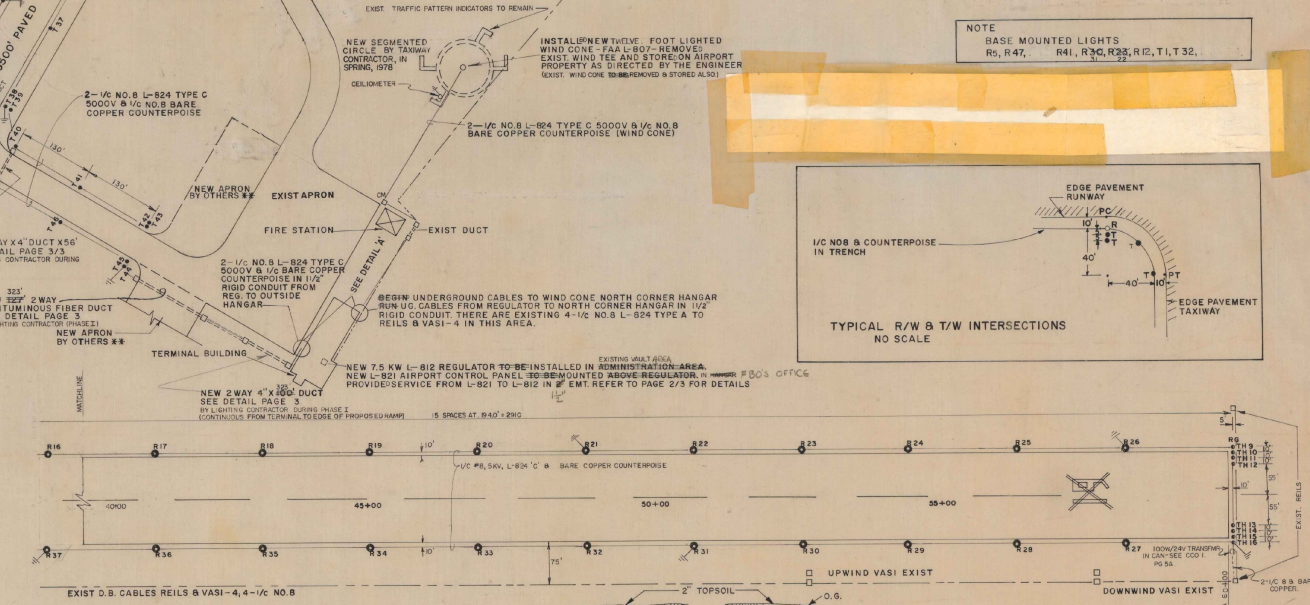


LEGEND

- TH 0 MEDIUM INTENSITY THRESHOLD LIGHTS (180° RED-180° GREEN FILTER)
- R 0 MEDIUM INTENSITY RUNWAY LIGHTS (CLEAR LENS)
- T 0 MEDIUM INTENSITY TAXIWAY LIGHTS (BLUE FILTER)
- DUCT & MARKERS
- CM 0 CABLE MARKER
- ** BY OTHERS IN SPRING 1978
- 0 MEDIUM INTENSITY RUNWAY LIGHTS (CLEAR/YELLOW LENS)

AS BUILT PLANS
 I hereby certify that all the construction required by this set of drawings has been accomplished as indicated herein.
 By *Guadalupe* Project Eng. Date *12/12/77*

RUNWAY LIGHTING PLAN
NOT TO SCALE



- NOTES**
- 1 ALL RUNWAY AND TAXIWAY LIGHTS TO BE 10' OFF PAVEMENT EDGE
 - 2 U.G. CABLES TO BE 10' OFF PAVEMENT EDGE
 - 3 MEDIUM INTENSITY RUNWAY LIGHTS (MIRL) & MEDIUM INTENSITY TAXIWAY LIGHTS (MITL) SHOULD CONFORM TO FAA A.C. 150/540-24
 - 4 EXIST D.B. CABLES FOR MIRLS & WIND CONE TO BE ABANDONED IN PLACE EXCEPT AS DIRECTED BY ENGINEER EXIST MIRLS TO BE REMOVED & STORED ON AIRPORT AS DIRECTED BY THE ENGINEER

NOTE
 BASE MOUNTED LIGHTS
 R5, R47, R41, R30, R32, R12, T1, T32.

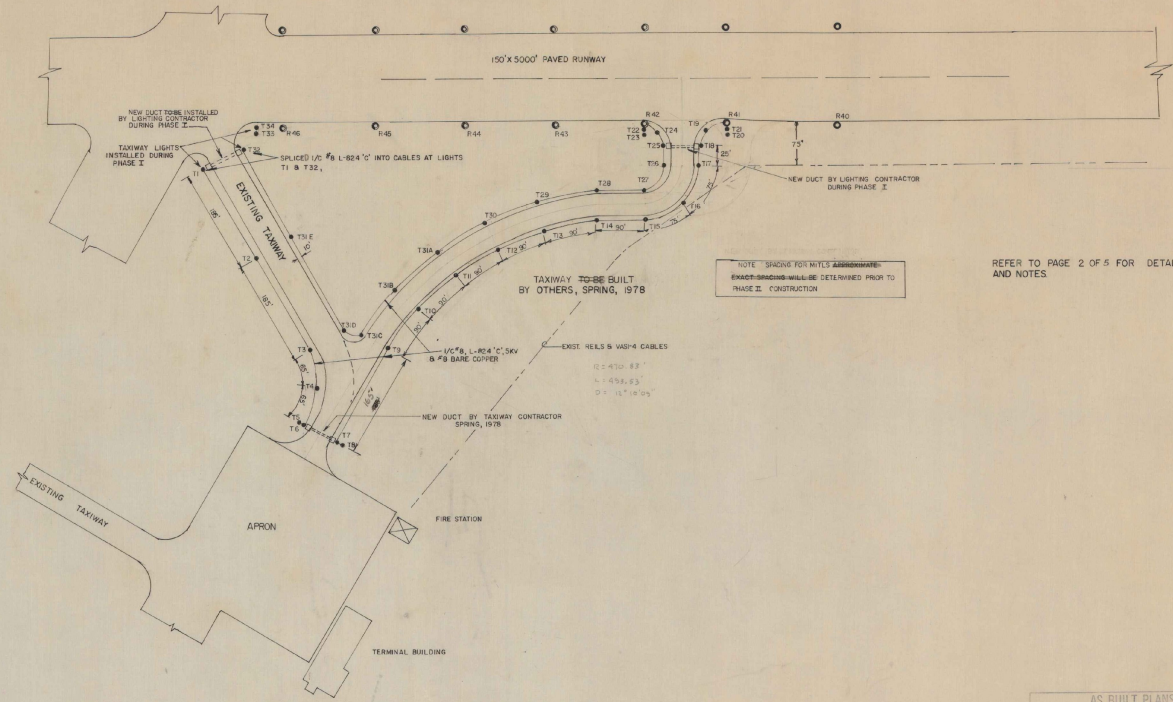
ADAP PROJECT NO. 6-50-0015-06

RUTLAND STATE AIRPORT
CLARENDON, VERMONT

RUNWAY LIGHTING PLAN
 (PHASE I)

VERMONT AGENCY OF TRANSPORTATION
 DEPARTMENT OF AERONAUTICS
 MONTPELIER, VERMONT

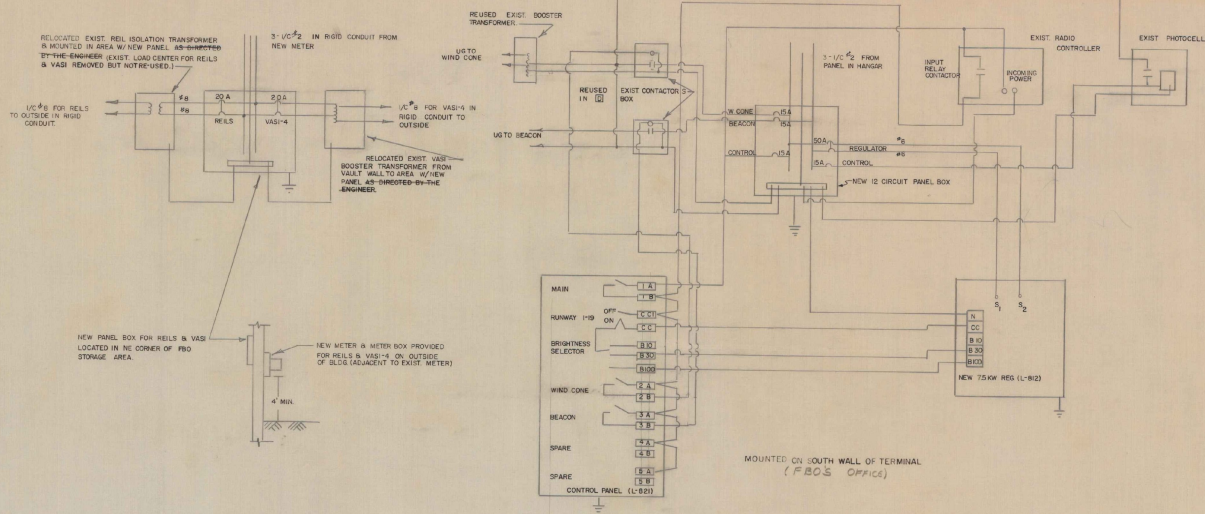
DRAWING 2 OF 5 DRAWN BY: L.L.



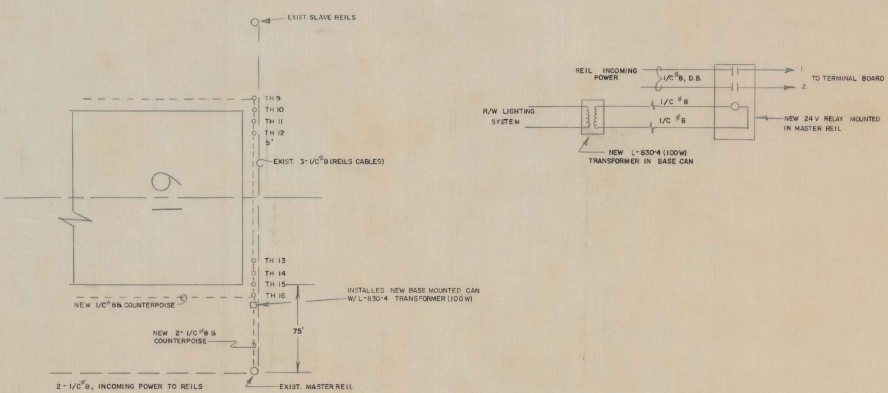
REFER TO PAGE 2 OF 5 FOR DETAILS AND NOTES

AS BUILT PLANS
 I hereby certify that all the construction required by this set of drawings has been accomplished as indicated herein.
 By *RJ [Signature]* Project Engineer
 Date *12/13/78*

ADAP PROJECT NO. 6-50-0015-06	
RUTLAND STATE AIRPORT CLARENDON, VERMONT	
RUNWAY LIGHTING PLAN (PHASE II)	
VERMONT AGENCY OF TRANSPORTATION DEPARTMENT OF AERONAUTICS MONTPELIER, VERMONT	
DRAWING 4 OF 5	DRAWN BY GWD



VAULT WIRING DIAGRAM
ADDENDUM NO. 1



CCO NO. 1

AS BUILT PLANS
 I hereby certify that all the construction required by this set of drawings has been accomplished as indicated herein.
 By *Geo. Damico* Project Engineer
 Date 12/12/77

ADAP PROJECT NO. 6-50-0015-06

RUTLAND STATE AIRPORT
CLARENDON, VERMONT

SUPPLEMENTARY INFORMATION

VERMONT AGENCY OF TRANSPORTATION
 DEPARTMENT OF AERONAUTICS
 MONTPELIER, VERMONT

DRAWING NO. 5A DRAWN BY GWD