

NOTE: ALL MATERIAL SUPPLIED AND INSTALLED BY CONTRACTOR UNLESS OTHERWISE SPECIFIED.
ALL STEEL HARDWARE AND EQUIPMENT SHALL BE GALVANIZED.

SPACE FOR POWER COMPANYS CONNECTION
TO POLES PER POWER CO. REQUIREMENTS

5 FT. MINIMUM

10 FT.

POLE CLASS # 3 BY POWER CO.

TYPE F CONDUIT FITTING

CONDUIT CLAMP

INCOMING TELCO CABLE BY TELEPHONE
CO. (TO DEMARICATION BOX AT TRAILER
TRENCHING BY CONTRACTOR)

TYPE F CONDUIT FITTING
CONDUIT CLAMP

1 1/2" GAL. RIGID CONDUITS BY CONTRACTOR
FOR TELCO LINES.

2" GAL. RIGID CONDUIT

2 HOLE PIPE STRAPS 5" Q" APART

1 1/2" GAL. STEEL
CONDUIT

2" CONDUIT

GROUND

TYP 2" STANDARD
SWEEP-ELL. TYR
GROUND BUSHING
3'-0" MIN.

D.E.B.
3-1/2" #2 600 V TYPE USE

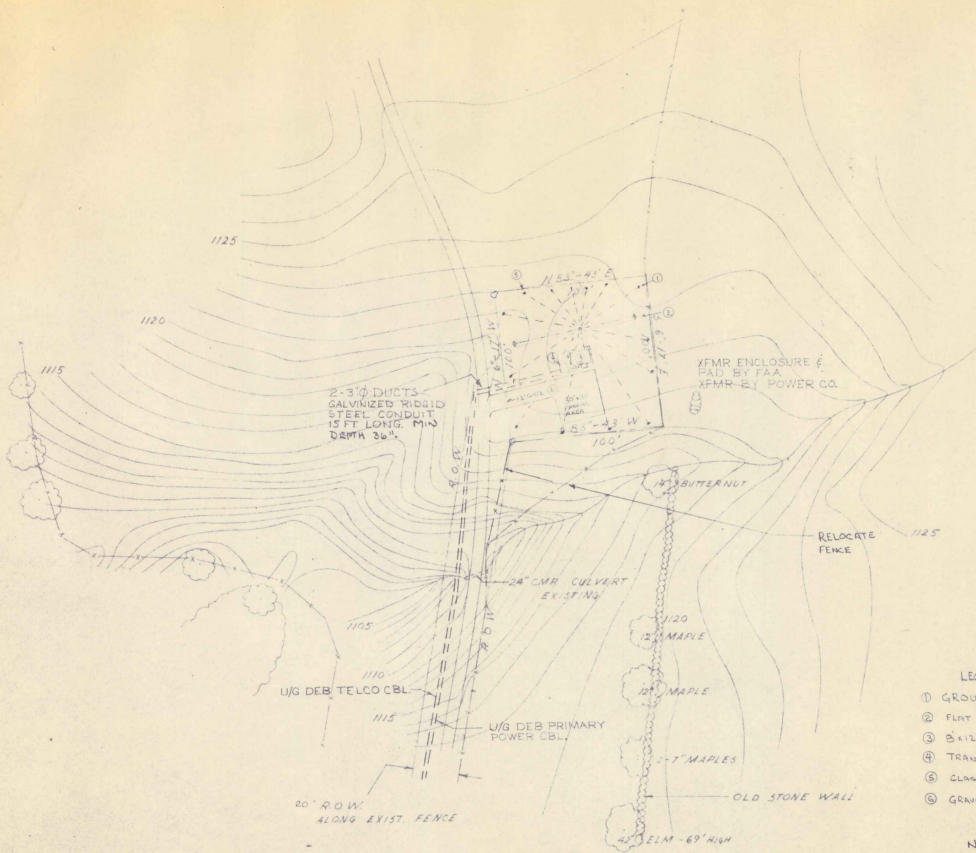
1 1/2" SWEEP ELL
OND BUSHING

3/8" COPPER
WIRE

NO.	REVISION	DATE	BY

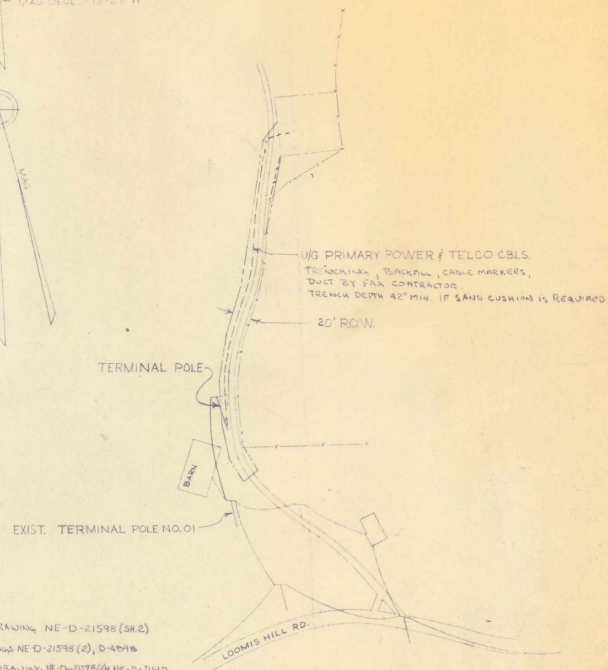
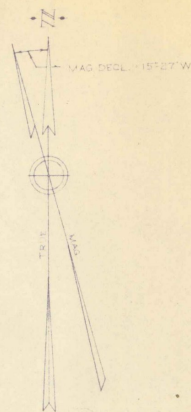
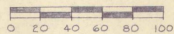
APPROVED
James A. [Signature]
DATE 7-27-72
BY J.A. [Signature]

POWER & TELCO
TERMINAL POLE
FEDERAL AVIATION ADMINISTRATION

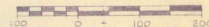


PLOT LAYOUT

SCALE: 1" = 40'



VICINITY SKETCH
SCALE: 1" = 100'



LEGEND

- ① GROUND RADIAL SYSTEM SEE DRAWING NE-D-21598 (SK.2)
- ② FLAT TOP ANTENNA SEE DRAWING NE-D-21598 (2), D-40MB
- ③ 8'x12' EQUIPMENT SHELTER SEE DRAWING NE-D-2078 (4) NE-D-2140
- ④ TRANSFORMER ENCLOSURE SEE DRAWING EN-D-2405L
- ⑤ CLASS "C" SEE DRAWING 366
- ⑥ GRAVEL SURFACE ROAD & PARKING AREA

NOTE

- 1 THE RESIDENT ENGINEER SHALL STAKE OUT THE CABLE TRENCH

REV.	DATE	DESCRIPTION	CHECKED	APPROVED
FEDERAL AVIATION ADMINISTRATION				
EASTERN REGION		NEW YORK, N.Y.		
MONTPELIER, VT. BARRE-MONTPELIER STATE AIRPORT ILS R/W 17 COMPASS LOCATOR VICINITY SKETCH				
REVIEWED BY	SUBMITTED BY	APPROVED BY		
	<i>H. Stetilla</i>	<i>C.H. Schulze</i>		
DESIGNED BY	ISSUED BY	DATE		REV.
		6-13-72		
DRAWN BY	CHECKED BY	DRAWING NO.		
		NE-D-21598B		

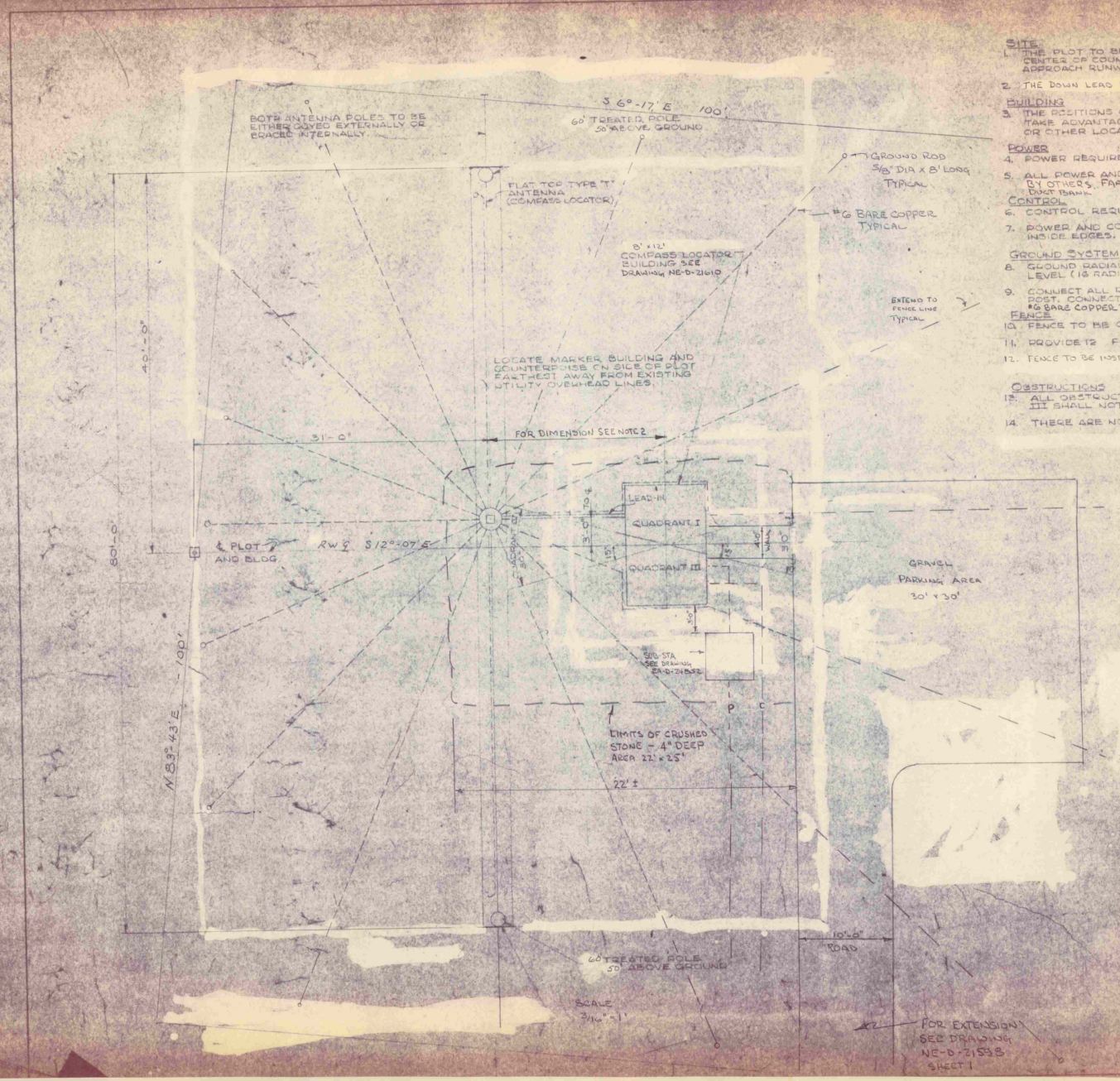
EE 10100
COMPASS LOCATOR
VICINITY SKETCH

NOTES

- SITE**
1. THE PLOT TO BE ORIENTED SO BEARING OF THE PLOT CENTERLINE (THRU CENTER OF COUNTERPOISE) IS THE SAME AS THE BEARING OF THE INSTRUMENT APPROACH RUNWAY CENTERLINE.
 2. THE DOWN LEAD POLE IS TO BE LOCATED 9 FT FROM THE BLDG. CENTER LINE.
- BUILDING**
3. THE POSITIONS OF THE BUILDING AND COUNTERPOISE MAY BE REVERSED TO TAKE ADVANTAGE OF DIRECTION OF POWER LINE APPROACH, ACCESS ROAD, OR OTHER LOCAL CONDITIONS.
- POWER**
4. POWER REQUIRED IS 120-240 VOLT, 60 CYCLE, SINGLE PHASE.
 5. ALL POWER AND CONTROL LINES TO BE UNDERGROUND. CABLES INSTALLED BY OTHERS, FAA CONTRACTOR TO TRENCH, BACK FILL, (INSTALL CABLE MARKERS & DUCT BANK).
 6. CONTROL REQUIRED IS A TWO CONDUCTOR METALLIC CIRCUIT.
 7. POWER AND CONTROL LINES MAY BE IN SAME TRENCH IF SEPARATED 12" INSIDE EDGES.
- GROUND SYSTEM**
8. GROUND RADIALS SHALL BE BURIED 12 INCHES MINIMUM BELOW GROUND LEVEL (12 RADIALS #6 BARE - MAY USE CABLE FLOW).
 9. CONNECT ALL RADIALS TOGETHER AND TO A GROUND ROD AT CENTER POST. CONNECT OUTER END EACH RADIAL TO GROUND ROD MARKED #6 BARE COPPER TO BE CONNECTED BY CLAMPS & BRAZING.
- FENCE**
10. FENCE TO BE CLASS 'C' WITH WOOD POSTS.
 11. PROVIDE 12 FOOT GATE IN FENCE FOR ACCESS ROAD.
 12. FENCE TO BE INSTALLED 1 FOOT INSIDE LEASED PROPERTY LINES. WILL BE 96' X 145'.
- OBSTRUCTIONS**
13. ALL OBSTRUCTIONS WITHIN 50 FT. OF COUNTERPOISE IN QUADRANTS I AND III SHALL NOT BE HIGHER THAN THE COUNTERPOISE.
 14. THERE ARE NO RESTRICTIONS ON OBSTRUCTIONS IN QUADRANTS II AND IV.

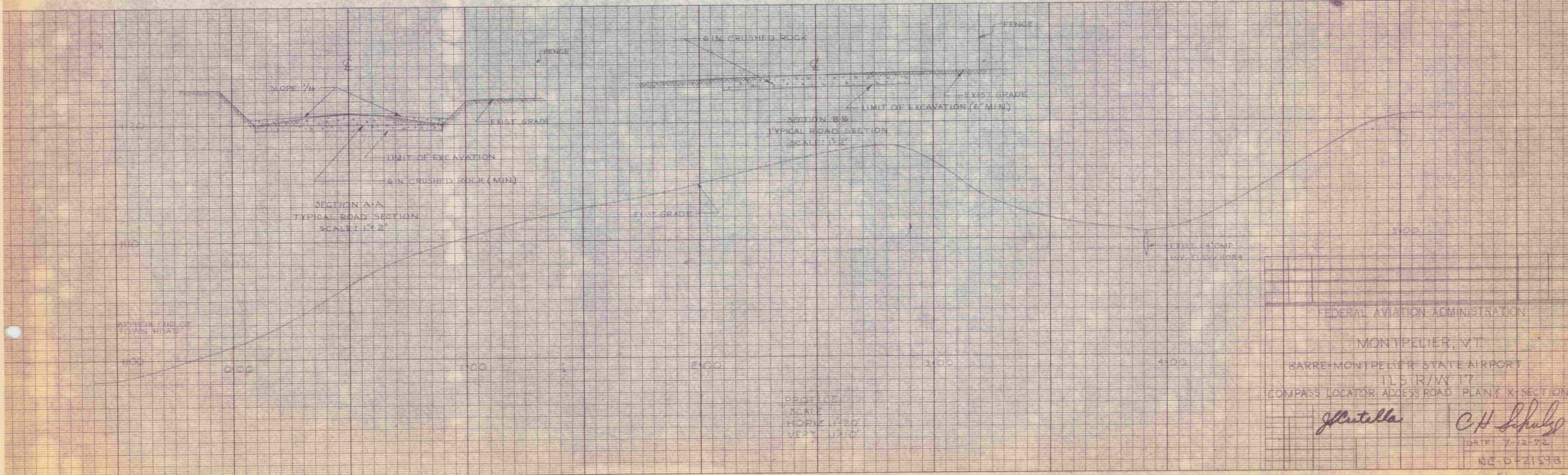
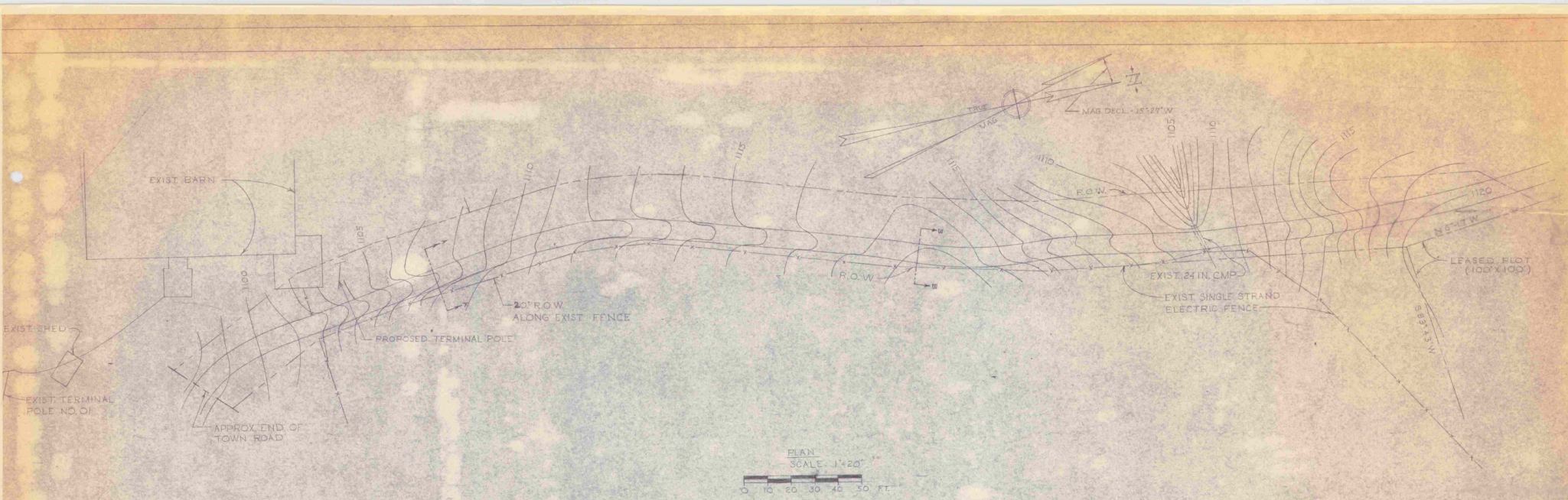
REFERENCE DRAWINGS

- NO. 566 CLASS 'C' FENCE (WOOD POSTS)
- NE-D-21533 COMPASS LOCATOR VICINITY SHEET



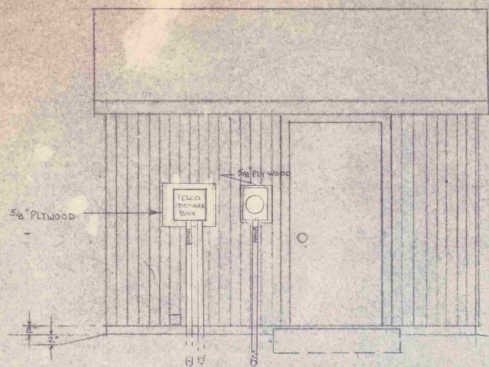
FEDERAL AVIATION AGENCY WASHINGTON, D. C.			
INSTRUMENT LANDING SYSTEM BARRE-MONTPELIER STATE AIRPORT COMPASS LOCATOR PLOT PLAN			
DESIGNED BY	DATE	CHECKED BY	DATE
<i>Shuttle</i>	7-16-72	<i>CH Hulse</i>	7-16-72
PROJECT NO. NE-D-21533		SHEET 1	

5-16

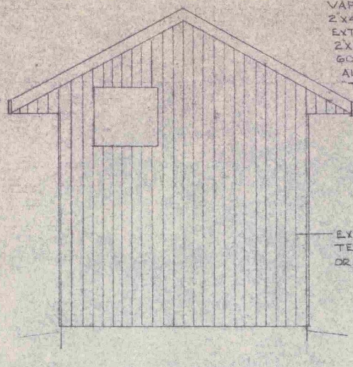


FEDERAL AVIATION ADMINISTRATION
 MONTPELIER, VT.
 BARRE-MONTPELIER STATE AIRPORT
 11.5 R/W
 COMPASS LOCATOR ACCESS ROAD - PLAN & X-SECTIONS

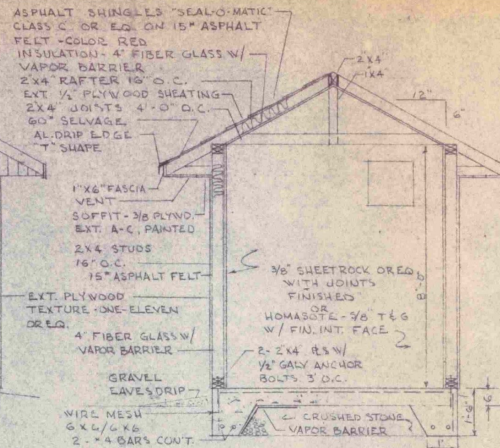
Stutella *C.H. Schulz*
 DATE 7-2-72
 NO. D-21598



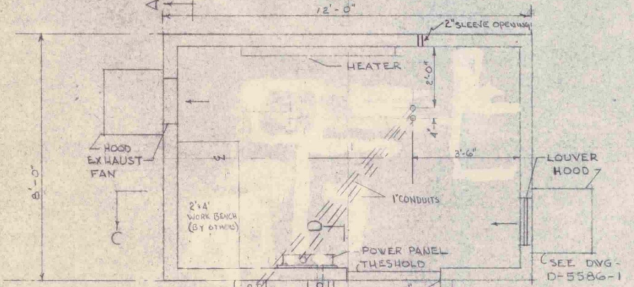
FRONT ELEV.



LEFT ELEV.

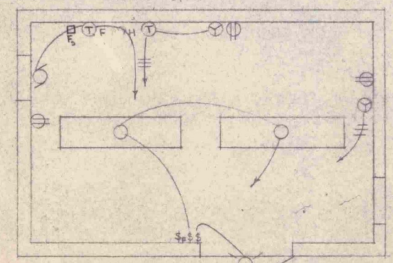


SEC. A-A

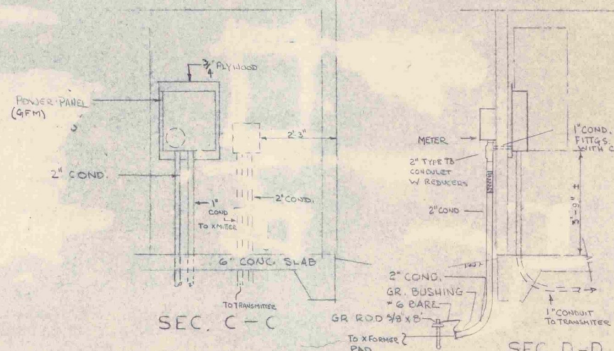


EQUIPMENT PLAN

TELCO DEMARK
350x 12" x 12" x 4"
1080 GALV W/4"
SCREW COVER, 1" TERMINAL STRIP FOR GPR



ELECT. PLAN

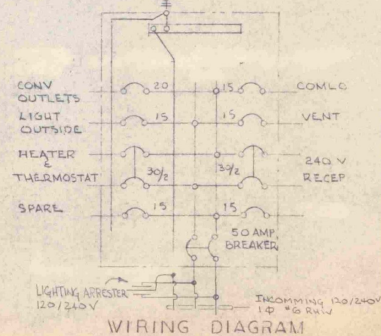


SEC. C-C

SEC. D-D

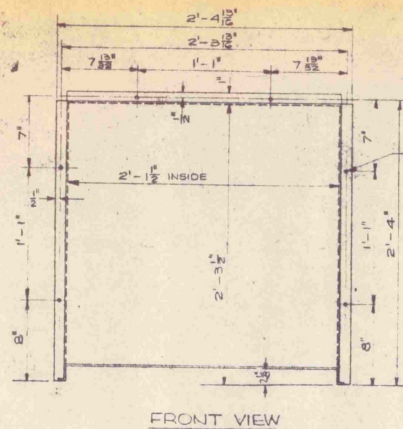
- NOTES
1. ELECTRICAL WIRING SHALL CONFORM TO SPEC. F.A.A-1217.4 NATIONAL ELECT. CODE.
 2. MOUNT ARRESTER IN BUILDING, CONNECT TO INCOMING SERVICE.
 3. 2" CONDUIT RISERS SHALL INCLUDE FLEX. CONDUIT.
 4. ALL CONDUIT TERMINATED IN BOVES, PANELS SHALL HAVE DOUBLE LOCKWAS & BUSHINGS.
 5. ALL UNDERGROUND CONDUITS TERMINATE WITH GROUNDING BUSHINGS.
 6. METER TO BE INSTALLED BY POWER CO.
 7. THE CONTRACTOR IS TO PREPARE ALL WORK UNLESS NOTED BY OTHERS.
 8. EQUIPMENT TO BE INSTALLED IN THE BLDG. SHALL CONFORM TO COMPASS LOCATOR BUILDING EQUIPMENT SPEC.

- LEGEND
- ⊕ DUPLEX REC 4' ABOVE FLOOR
 - ⊕ 240V REC 4' ABOVE FLOOR
 - ⊕ THERMOSTAT - FAN
 - ⊕ THERMOSTAT - HEATER
 - ⊕ LIGHT SWITCH 4'6" ABOVE FLOOR
 - ⊕ LIGHT FIXTURE - EXT.
 - ⊕ FLUORESCENT LIGHT FIX.
 - ⊕ FAN - MANUAL STARTER
 - Fc FUSTAT

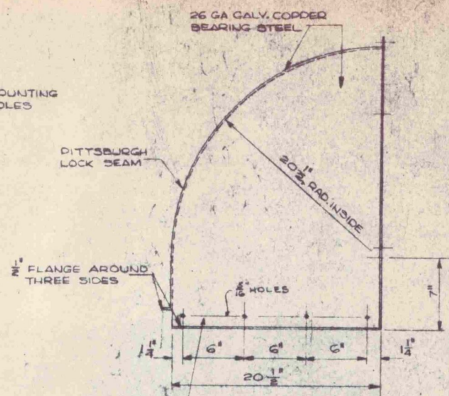


WIRING DIAGRAM

REV. LTR.	DATE	DESCRIPTION	CHECKED	APPROVED
FEDERAL AVIATION ADMINISTRATION EASTERN REGION NEW YORK, N.Y.				
ILS COMLO BLDG PLANS & ELEVATIONS				
DESIGNED BY	SUBMITTED BY		APPROVED BY	
DRAWN BY	CHECKED BY		DATE	
NE-436	NE-D-21610		7-5-72	

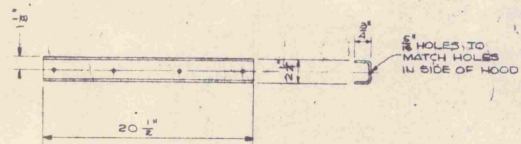


FRONT VIEW

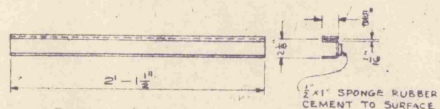


SIDE VIEW

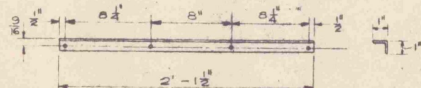
① FASTEN SIDE GUIDES TO SIDE PIECES OF HOOD WITH $\frac{1}{4}$ " B.H. SCREWS, NUTS & LOCKWASHERS, NUTS OUTSIDE.



① SIDE FILTER GUIDE
16 GA. GALV.
2 REQ.

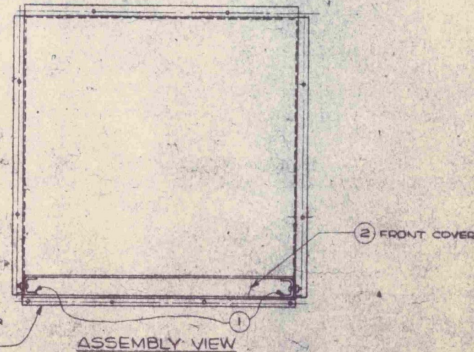


② FRONT COVER
16 GA. GALV.
1 REQ.



③ REAR FILTER SUPPORT
16 GA. GALV.
1 REQ.

③ FASTEN REAR FILTER SUPPORT TO BUILDING WALL AT INSTALLATION WITH NO. 14 X $\frac{3}{4}$ " Q.H. SHEET METAL SCREWS



ASSEMBLY VIEW

NOTES

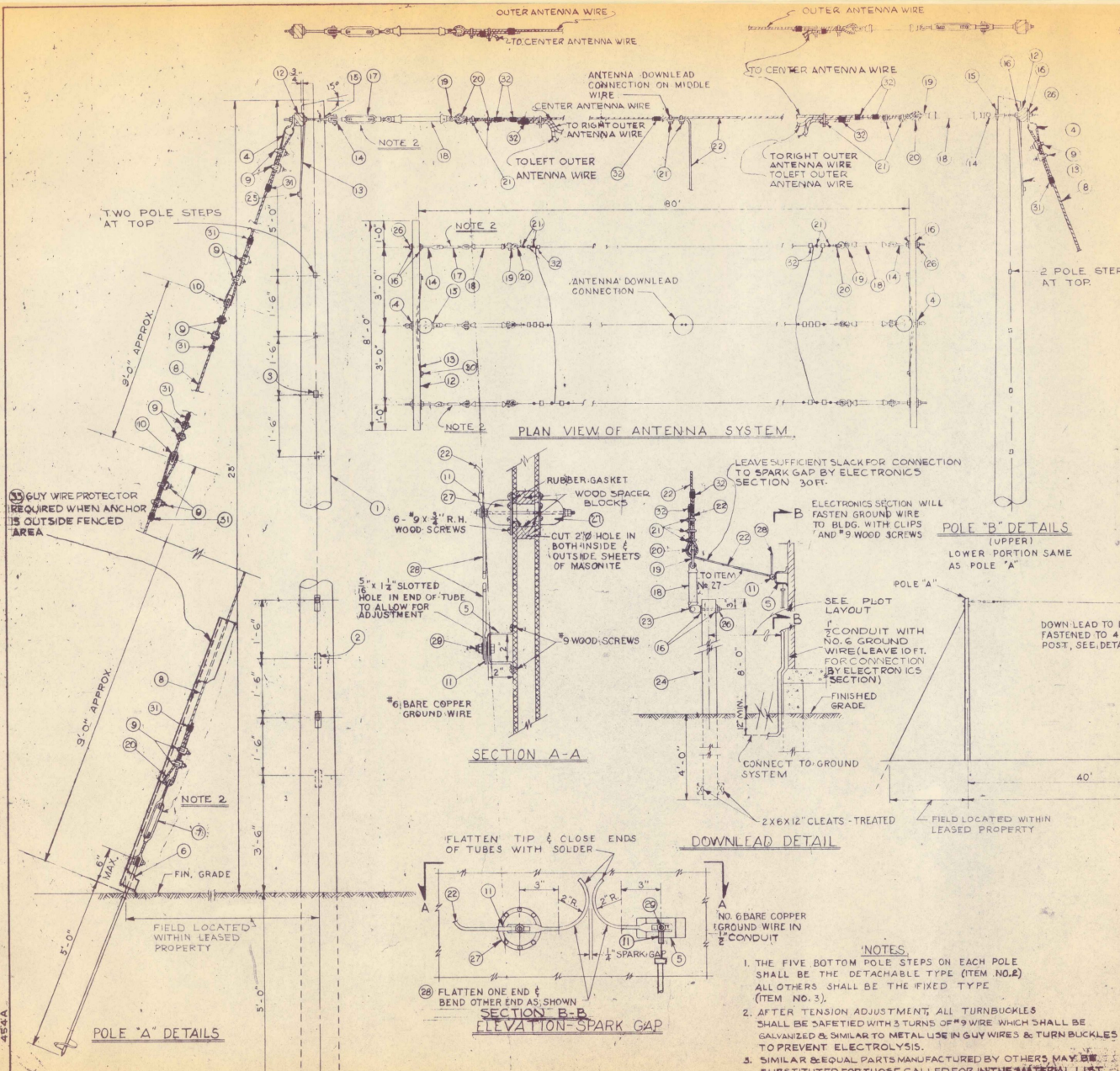
- HOOD SHALL BE SHIPPED KNOCKED DOWN FOR FIELD ASSEMBLY.
- HOOD SHALL ACCOMMODATE ONE 19 1/2" X 24 1/2" X 2" FILTER TO BE SUPPLIED BY OTHERS.
- MAKE $\frac{1}{8}$ " HEM ON ALL FLANGES OF HOOD.
- EACH COMPLETE HOOD SHALL BE PACKED IN A CARDBOARD CARTON SUITABLE FOR DOMESTIC SHIPMENT. EACH CARTON SHALL CONTAIN ASSEMBLY INSTRUCTIONS TO BE FURNISHED BY THE GOV'T, AND EACH CARTON SHALL BE MARKED WITH THE FOLLOWING: HOOD, TYPE HV-1, PURCHASE ORDER NO. (NUMBER).
- TOLERANCE FOR HOLE DIMENSIONS AND FOR ASSEMBLED HOOD DIMENSIONS IS $\pm \frac{1}{16}$.
- A PROTECTIVE SHEET METAL STRIP SHALL BE PLACED IN EACH UNASSEMBLED LOCK BEAM JOINT TO PREVENT DAMAGE DURING HANDLING AND SHIPPING.
- FURNISH THE FOLLOWING WITH EACH HOOD:
6- $\frac{3}{8}$ " X 2 1/2" Q.H. MACHINE SCREWS WITH NUTS & LOCKWASHERS.
4-NO. 14 X $\frac{3}{4}$ " Q.H. SHEET METAL SCREWS.
ALL SCREWS AND LOCKWASHERS TO BE ZINC COATED.
- PAINT ALL CORNERS OF SHEET METAL BENDS WHERE GALVANIZING IS CRACKED OR LOOSE. THE PAINT SHALL BE ALUMINUM IN ACCORDANCE WITH FEDERAL SPECIFICATION TT-A-468 OF THE LATEST ISSUE IN EFFECT.

NO.	REVISIONS	DATE	CHECKED	EDITOR

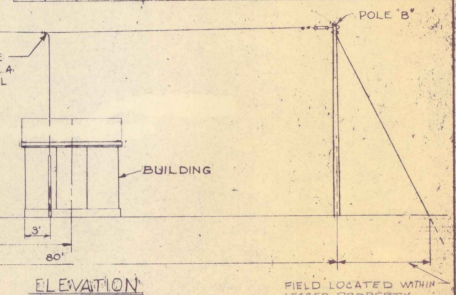
FEDERAL AVIATION AGENCY
AVIATION FACILITIES SERVICE
SYSTEMS EQUIPMENT DIVISION
PLANT ENGINEERING BRANCH
WASHINGTON 25, D.C.

HOOD, HV-1A TYPE
SHOP DETAILS

DESIGNED BY W. J. BLAIR	APPROVED BY W. J. BLAIR
CHECKED BY R. L. BROWN	DATE 11-15-57



ITEM NO.	QUANTITY	DESCRIPTION
1	2	POLES, WOOD, 80 FT. LONG, CLASS 3, FULL LENGTH, PRESSURE TREATED, PAINTABLE.
2	10	STEPS, POLE DETACHABLE, GALV., HUBBARD NO. 7235. (LAG AND PLATE) AND NO. 7236 STEP, GALV.
3	16	STEPS, POLE, HOOK HEAD 5/8" x 9", GALV., HUBBARD NO. 7124.
4	2	ANGLE THIMBLE, HUBBARD #100 FOR 5/8" BOLT, GALV.
5	1	BRACKET, 10 GA. x 1/2" STEEL FLAT, GALV. (AS SHOWN).
6	2	ANCHORS, GUY, STEEL WING, OVAL EYE, 3/4" x 3/4" FT. GALV. HUBBARD NO. 7326-A.
7	2	TURNBUCKLES, EYE & CLEVIS, 1/2" x 12 HUBBARD #9713, GALV.
8	10	STRAND, STEEL 3/4, GUY, SIEMENS-MARTIN - GALV. CLASS "A" COATING OR BETTER.
9	24	CLIPS FOR 1/2" WIRE ROPE, HUBBARD # 7481, GALV.
10	4	INSULATORS, GUY, PORCELAIN, 1 3/4" HOLES, HUBBARD NO. 506.
11	2	TERMINAL LUG, (AS SHOWN)
12	2	CROSSARMS, WOOD, 8" - 0", STANDARD 3/4" x 4 1/4" CREOSOTED.
13	4	BRACES, CROSSARM, FLAT 7/8" x 1 1/2" x 32" GALV. HUBBARD NO. 8032.
14	6	BOLTS, CLEVIS, 3/8" x 1 1/4" HUBBARD NO. 6814, GALV. WITH NUT
15	2	WASHERS, CURVED, 2 1/2" x 2 1/2", HUBBARD NO. 7822, GALV.
16	10	WASHERS, SQUARE, 2" x 2", HUBBARD NO. 7812, GALV.
17	3	TURNBUCKLES, EYE & CLEVIS, 1/2" x 6" HUBBARD #6643, GALV.
18	7	INSULATOR, ANTENNA, LAPP INSULATOR CO. #43808 P12, 12 INCH.
19	7	SHACKLES, DROP FORGED STEEL 2" x 1 1/2" WITH 3/8" DIA. PIN GALV., HUBBARD NO. 6793.
20	9	THIMBLES, FOR 3/4" WIRE ROPE, GALVANIZED - HUBBARD #7593.
21	19	CONNECTORS, COPPER, KEARNEY NO. B40-2.
22	20	FT. WIRE, ANTENNA #4 STRANDED SILICON BRONZE OR EQUAL.
23	1	BOLT, CLEVIS, 3/8" x 1 1/4" HUBBARD NO. 6805 GALV. WITH NUT
24	1	POST, WOOD, 4 X 4 X 12 FT. LONG, DOUGLAS FIR OR EQUAL - PRESSURE TREATED.
25	2	LAG SCREWS, 1/2" x 3", GALV.
26	4	NUTS, HEX. 5/8" GALV.
27	2	BOWL, INSULATOR, LOCKE NO. 24107 WITH GALV. 1/2" x 6 1/2" STUD BOLT.
28	1	ARCING HORNS, 3/4" O.D. COPPER TUBES (FABRICATE AS SHOWN)
33	2	GUY WIRE PROTECTOR WITH 2" BOLTS - HUBBARD #7555
29	1	BOLT, 1/2" x 1 1/4" WITH NUT, LOCK WASHER, 2" PLAIN WASHER, GALV.
30	4	CARRIAGE BOLT, 3/8" x 4", GALV.
31	12	SERVISLEEVS #7453 HUBBARD GALV.
32	17	SERVISLEEVS #7452 HUBBARD GALV.



NO.	REVISIONS	DATE	APPROVED
7	ADDITIONAL INSULATOR IN SECT. A-A	11-20-45	PRK
6	CHANGED NOTES, PARTS LIST, AND CONNECTIONS OF 21, 22 IN PLAN VIEW, ALSO IN SPARK GAP ELEVATION. NOTED SECTION B-B.	7-10-41	WHP/JS
5	REVISED, SECT. A-A, ADDED NOTE	4-15-40	WHP/JS
4	AS PER REGIONAL SUGGESTION - MINOR REVISIONS	9-14-39	WHP/JS
3	ROTATED POLE STEPS 90°	1-18-39	WHP/JS
2	REDRAWN AND MINOR REVISIONS	7-23-36	WHP/JS
1	MINOR REVISIONS	12-11-37	WHP/JS

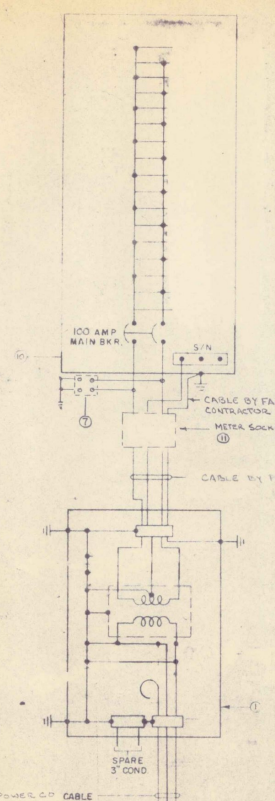
CIVIL AERONAUTICS ADMINISTRATION
 OFFICE OF FEDERAL AIRPORTS
 ESTABLISHMENT ENGINEERING DIVISION

INSTRUMENT LANDING SYSTEM
 COMPASS LOCATOR - FLAT TOP TYPE T
 ANTENNA DETAILS & ERECTION

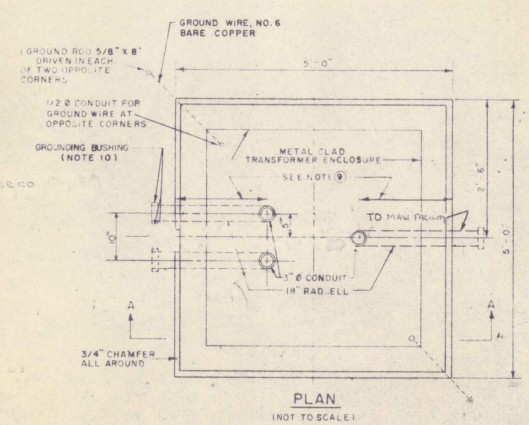
11-12-72 D-4898

- NOTES**
- THE FIVE BOTTOM POLE STEPS ON EACH POLE SHALL BE THE DETACHABLE TYPE (ITEM NO. 2) ALL OTHERS SHALL BE THE FIXED TYPE (ITEM NO. 3).
 - AFTER TENSION ADJUSTMENT, ALL TURNBUCKLES SHALL BE SAFETYED WITH 3 TURNS OF #9 WIRE WHICH SHALL BE GALVANIZED & SIMILAR TO METAL USE IN GUY WIRES & TURNBUCKLES TO PREVENT ELECTROLYSIS.
 - SIMILAR & EQUAL PARTS MANUFACTURED BY OTHERS MAY BE SUBSTITUTED FOR THOSE CALLED FOR IN THE MATERIAL LIST.
 - ELECTRONICS SECTION WILL INSTALL SPARK GAP & CONNECT TO GROUND SYSTEM & ANTENNA WIRE.

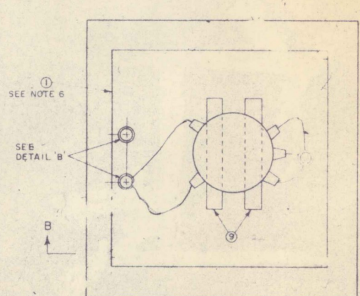
981 454A



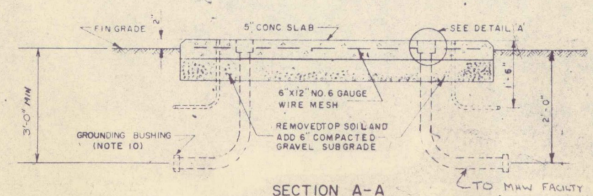
WIRING DIAGRAM



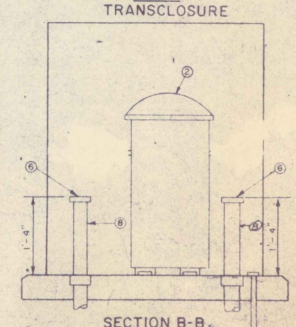
PLAN
(NOT TO SCALE)



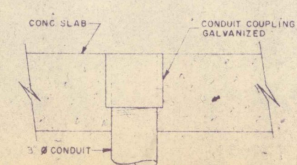
PLAN
TRANSCLUCURE



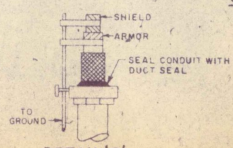
SECTION A-A



SECTION B-B



DETAIL 'A'



DETAIL 'B'

EQUIPMENT LIST

- * (1) TRANSCLUCURE 54" X 54" X 71" H
- (2) TRANSFORMERS 2400-120/240 VOLTS 10 KVA
FURNISHED AND INSTALLED BY POWER CO.
- (3) INSULATING BUSHING GROUNDING TYPE OZ BL3104 OR EQUAL
- (4) LOW VOLTAGE LIGHTING ARRESTOR 120/240V
- (5) 3" CONDUIT GALVANIZED STEEL
- (6) SUPPORT CHANNEL 3" X 3" X 4"
- * (7) DISTRIBUTION PANEL 120/240, 55 AMP MAIN BREAKER
- (8) THE METER SOCKET AVAILABLE FROM POWER CO.

* GOVERNMENT FURNISHED EQUIPMENT.

NOTES

1. ALL ELECTRICAL WORK SHALL CONFORM TO THE NATIONAL ELECTRIC CODE AND LOCAL REGULATIONS.
2. GROUND ALL NON-CURRENT CARRYING METAL PARTS OF ELECTRICAL EQUIPMENT USING #6 BARE COPPER WIRE. USE SPLIT BOLT CONNECTIONS AND GROUNDING LUGS FOR THE ABOVE UNLESS OTHERWISE SPECIFIED.
3. ALL GROUND WIRE FOLLOWING STEEL FRAME SHALL BE FASTENED AT LEAST EVERY 18" AND WITHIN 6" FROM BEND OR JUNCTION. THE SHAPING OF GROUND WIRE SHALL FOLLOW PARALLEL OR PERPENDICULAR TO ALL SURFACES.
4. CHAMFER ENDS OF 3/4" CONDUIT FROM WELLS TO FIT DISTANCE FROM WALL TO BE COMPATIBLE WITH POWER REQUIREMENTS.
5. ALL CONDUIT FITTINGS, NUTS, BOLTS AND STEELWORK SHALL BE GALVANIZED.
6. STENCIL THE FOLLOWING ON HINGED DOORS IN "I" LETTERS "TO DE-ENERGIZE TRANSFORMER, CUTOUT MUST BE OPEN."
7. THE 1/2" CONDUITS FOR THE GROUND WIRE SHALL TERMINATE AT PAD LEVEL WITH BUSHING.
8. GROUND RESISTANCE SHALL NOT EXCEED 10 OHMS. ADDITIONAL GROUND RODS SHALL BE INSTALLED IF NECESSARY TO MEET THIS REQUIREMENT.
9. DUE TO DIFFERENT SIZES OF TRANSFORMERS AND ENCLOSURES THE DIMENSION FOR PLACEMENT OF CONDUIT SHALL BE DETERMINED IN FIELD.
10. SPARE CONDUIT SHALL BE CAPPED ON BOTH ENDS.
11. SEE DR. NO. NE-2-21578, SHEETS 1 & 2, FOR LOCATION AND LAYOUT.

DRAWING NOT TO SCALE

NO.	DATE	BY	CHKD.	APPV.
DEPARTMENT OF TRANSPORTATION FEDERAL AVIATION ADMINISTRATION				
XFMR. AND WIRING DIAGRAM				
DESIGNED BY	CH Shady			
CHECKED BY	4/11/72			
DATE	EA-942			
PROJECT NO.	EA-D-24852			

BGP