

LOCATION MAP
NOT TO SCALE

**STATE OF VERMONT
AGENCY OF TRANSPORTATION
MASTER PLAN
EDWARD F. KNAPP
STATE AIRPORT**

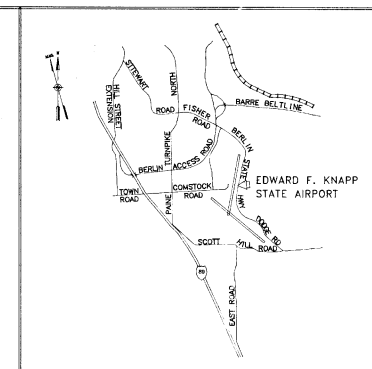
FAA PROJECT NO. 3-50-0001-0186
VAOT PROJECT NO. AIR 03-2047

INDEX TO DRAWINGS

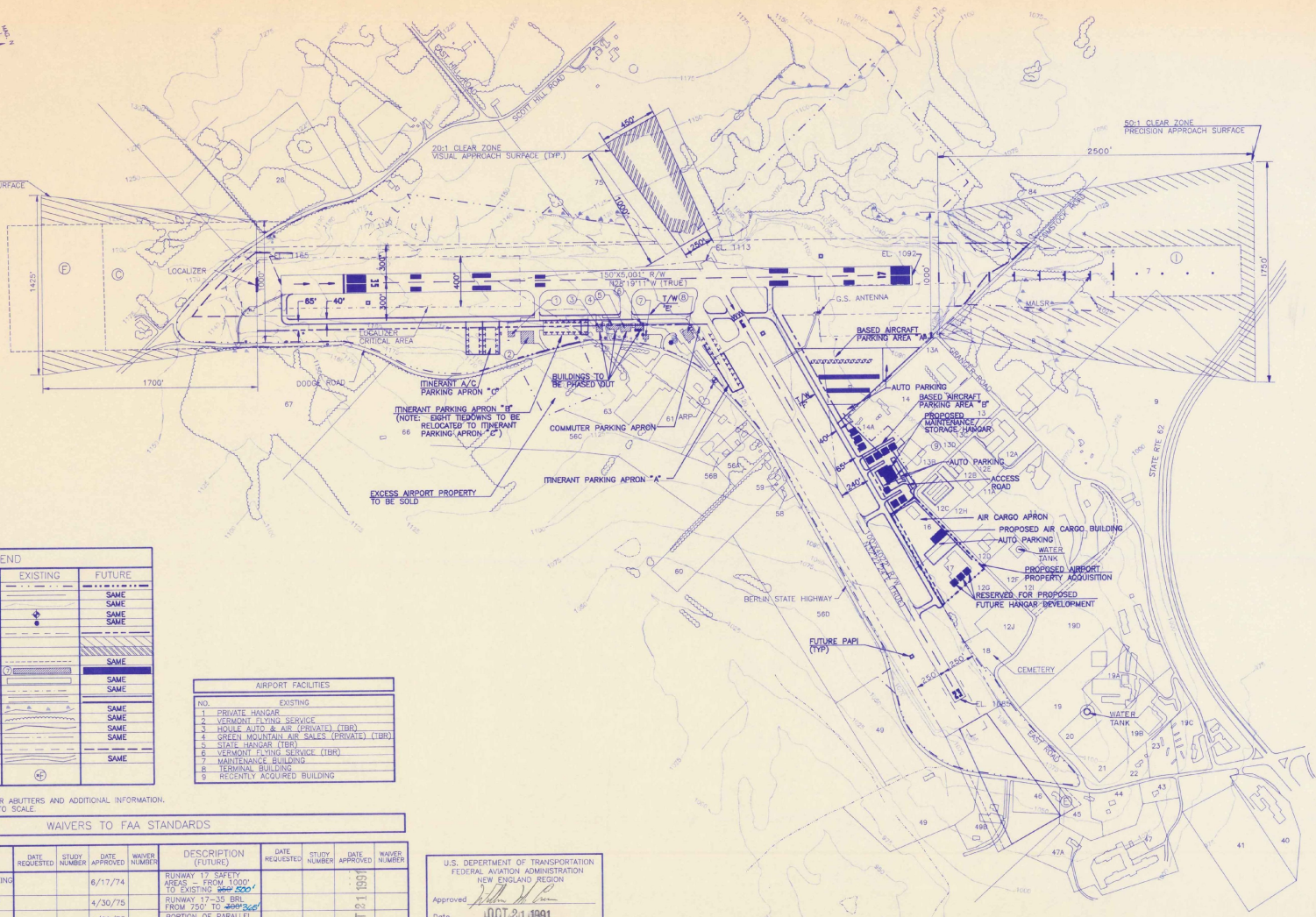
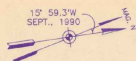
1. EXISTING AIRPORT LAYOUT PLAN
2. AIRPORT LAYOUT PLAN
3. DATA SHEET
4. TERMINAL AREA PLAN - SOUTH
5. TERMINAL AREA PLAN - NORTH
6. AIRPORT IMAGINARY SURFACES PLAN
7. PLAN AND PROFILE RUNWAY 17-35
8. PLAN AND PROFILE RUNWAY 5-23
9. LAND USE PLAN

MARCH, 1991

**HOYLE, TANNER & ASSOCIATES, INC.
ENGINEERS/ARCHITECTS/PLANNERS/SURVEYORS
BEDFORD, NEW HAMPSHIRE**



VICINITY MAP
NOT TO SCALE



LEGEND		
ITEM	EXISTING	FUTURE
AIRPORT PROPERTY LINE	---	---
MISCELLANEOUS PROPERTY LINE	---	SAME
CONTOURS (UGS+MSL) DATUM	---	SAME
AIRPORT REFERENCE POINT (ARP)	+	SAME
AIRPORT ROTATING BEACON	⊙	SAME
BUILDING RESTRICTION LINE (B.R.L.)	---	---
AVIGATION EASEMENT	---	---
TEE ACQUISITION	---	SAME
MISCELLANEOUS EASEMENTS	---	SAME
AIRPORT BUILDINGS/FACILITIES	▭	▭
MISC. BUILDINGS/FACILITIES	▭	SAME
G.S./LOC. CRITICAL AREA	---	SAME
RUNWAYS/TAXIWAYS	---	SAME
MARSH/WETLAND	---	SAME
TREELINE/BRUSH	---	SAME
SURFACE WATER	---	SAME
RUNWAY VISIBILITY ZONE	---	SAME
SAFETY AREA	---	SAME
ROADS	---	SAME
RECORD OF EASEMENT (SEE DATA SHEET 3 OF 9)	---	---

AIRPORT FACILITIES	
NO.	EXISTING
1	PRIVATE HANGAR
2	VERMONT FLYING SERVICE
3	HOUSE, AUTO & AIR (PRIVATE) (TBR)
4	GREEN MOUNTAIN AIR SALES (PRIVATE) (TBR)
5	STATE HANGAR (TBR)
6	VERMONT FLYING SERVICE (TBR)
7	MAINTENANCE BUILDING
8	TERMINAL BUILDING
9	RECENTLY ACQUIRED BUILDING

*NOTE: SEE DATA SHEET (SHEET 3 OF 9) FOR ABUTTERS AND ADDITIONAL INFORMATION. ABUTTING PROPERTY LINES ARE NOT TO SCALE.

WAIVERS TO FAA STANDARDS

DESCRIPTION (EXISTING)	DATE REQUESTED	STUDY NUMBER	DATE APPROVED	WAIVER NUMBER	DESCRIPTION (FUTURE)	DATE REQUESTED	STUDY NUMBER	DATE APPROVED	WAIVER NUMBER
TAXIWAY-RUNWAY AND RUNWAY-PARKING APRON SEPARATION DISTANCE			6/17/74		RUNWAY 17 SAFETY AREAS - FROM 1000' TO EXISTING 2000'			OCT 21 1991	
USE OF STATE PAVING SPECIFICATION			4/30/75		RUNWAY 17-35 FROM 750' TO 2000'			OCT 21 1991	
CONSTRUCTION OF APRON SERVED BY STUB TAXIWAY			4/29/75		PORTION OF PARALLEL TAXIWAY RUNWAY 17-35 FROM 400' TO 300'			OCT 21 1991	
					ALL AIRCRAFT PARKING AREAS ALONG RUNWAY 17-35 FROM 500' TO 2000'			OCT 21 1991	
					RUNWAY 35 SAFETY AREA FROM 1000' TO EXISTING 650'			OCT 21 1991	
					EXISTING BUILDINGS NORTH OF ITINERANT PARKING "C" TO RUNWAY 4-23 PENETRATION TO RUNWAY 17-35 PRIMARY SURFACE			OCT 21 1991	

U.S. DEPARTMENT OF TRANSPORTATION
 FEDERAL AVIATION ADMINISTRATION
 NEW ENGLAND REGION
 Approved: *[Signature]*
 Date: **OCT 21 1991**
 Approved subject to comments and recommendations in letter dated **OCT 21 1991**

VERMONT AGENCY OF TRANSPORTATION
 MONTPELIER, VERMONT
 Approved: *[Signature]*
 Date: **April 16, 1991**

E.F. KNAPP MASTER PLAN UPDATE
 ADVISORY COMMITTEE
 Approved: *[Signature]*
 Date: _____
 Advisory Committee Chairman



ENGINEER/ARCHITECT

PROJECT NO.	60802
FILE NAME	EDSALP
DATE	00/00/00

Hoyle, Tanner & Associates, Inc. **HTA**
 100 Commercial Park North, Berlin, New Hampshire 03102
 CONSULTING AIRPORT ENGINEERS

SCALE: 1"=400'

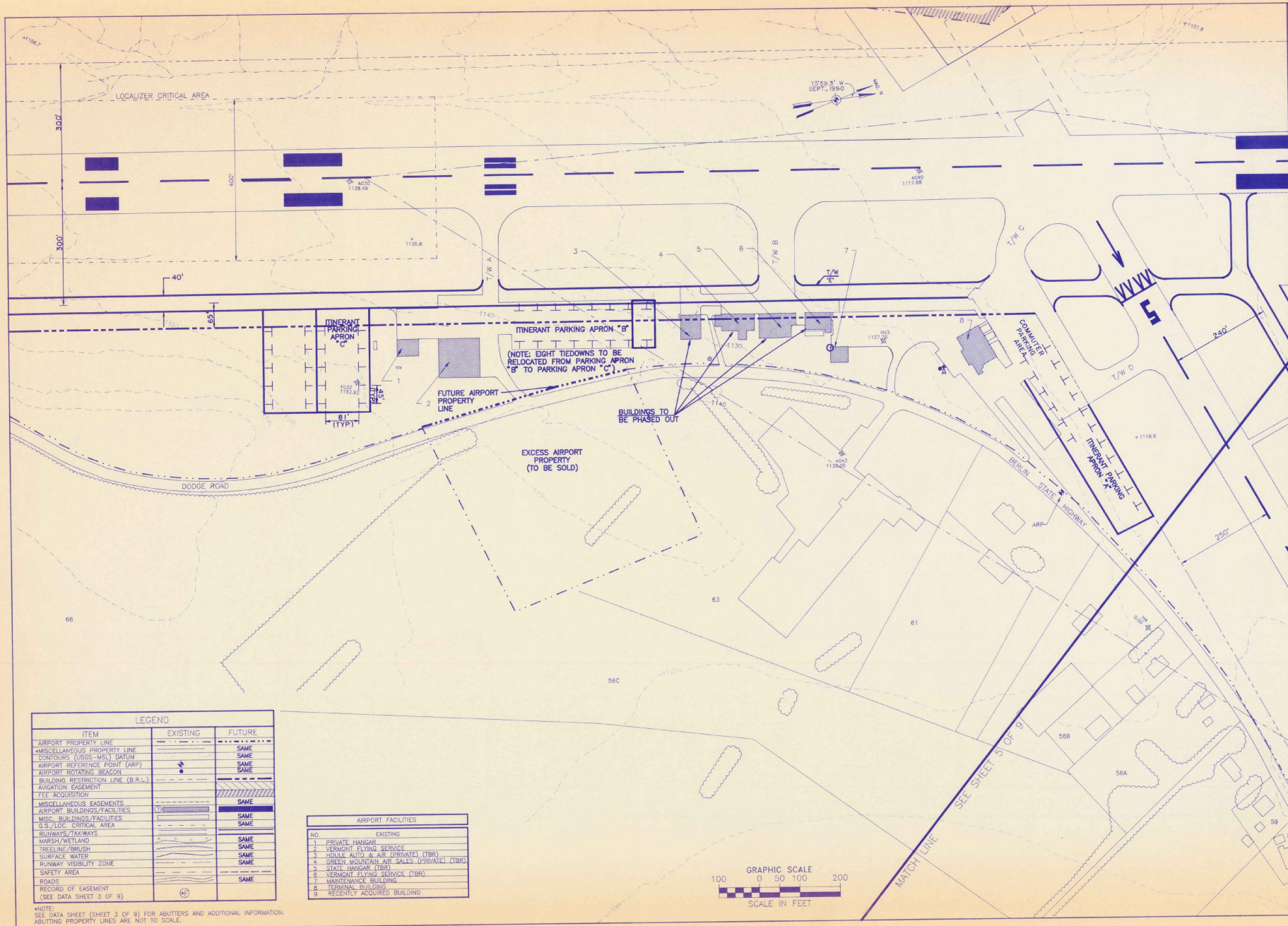
DATE: MARCH, 1991

EDWARD F. KNAPP STATE AIRPORT
 BERLIN, VERMONT

AIRPORT LAYOUT PLAN

DRAWING NO. **2**

SHEET 2 OF 9



ENGINEER/ARCHITECT

PROJECT NO.	60802
FILE NAME	60802.DWG
DATE	1991
REV.	
DESCRIPTION	

Hoyle, Tanner & Associates, Inc. **HTA**
 Five Corners Park North, Berliand, New Hampshire 03102
 CONSULTING AIRPORTS

EDWARD F. KNAPP STATE AIRPORT
 BERLIN, VERMONT

DATE: MARCH, 1991

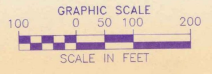
SCALE: 1" = 100'

DRAWING NO. **4**

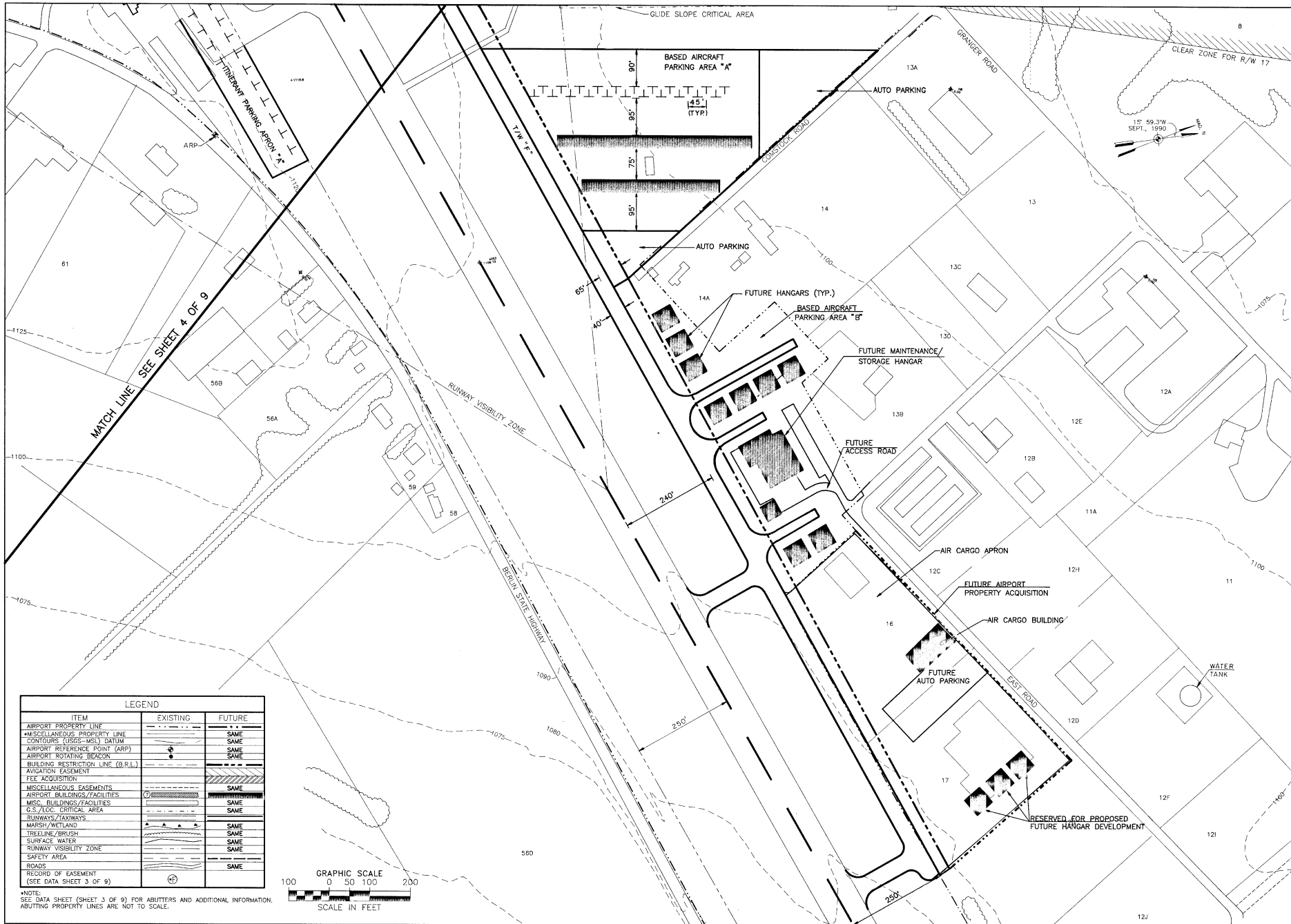
SHEET 4 OF 9

LEGEND		
ITEM	EXISTING	FUTURE
AIRPORT PROPERTY LINE	---	---
MISCELLANEOUS PROPERTY LINE	---	SAME
CONTOURS (2005-MSL) DATUM	~	SAME
AIRPORT REFERENCE POINT (ARP)	+	SAME
AIRPORT ROTATING BEACON	⬤	SAME
BUILDING RESTRICTION LINE (B.R.L.)	---	SAME
AVIGATION EASEMENT	---	SAME
FEE ACQUISITION	---	SAME
MISCELLANEOUS EASEMENTS	---	SAME
AIRPORT BUILDINGS/FACILITIES	▭	SAME
MISC. BUILDINGS/FACILITIES	▭	SAME
G.S./LOC. CRITICAL AREA	---	SAME
RUNWAYS/TAXIWAYS	---	SAME
MARSH/WETLAND	---	SAME
TREELINE/BRUSH	---	SAME
SURFACE WATER	---	SAME
RUNWAY VISIBILITY ZONE	---	SAME
SAFETY AREA	---	SAME
ROADS	---	SAME
RECORD OF ENCUMBRANCE (SEE DATA SHEET 3 OF 9)	⊕	SAME

AIRPORT FACILITIES	
NO.	EXISTING
1.	PRIVATE HANGAR
2.	VERMONT FLYING SERVICE
3.	HOLLE AUTO & AIR (PRIVATE) (TBR)
4.	GREEN HOSPITAL AIR WALK (PRIVATE) (TBR)
5.	STATE HANGAR (TBR)
6.	VERMONT FLYING SERVICE (TBR)
7.	MAINTENANCE BUILDING
8.	TERMINAL BUILDING
9.	RECENTLY ACQUIRED BUILDING

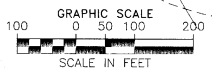


NOTE:
 SEE DATA SHEET (SHEET 3 OF 9) FOR ABUTTERS AND ADDITIONAL INFORMATION.
 ABUTTING PROPERTY LINES ARE NOT TO SCALE.

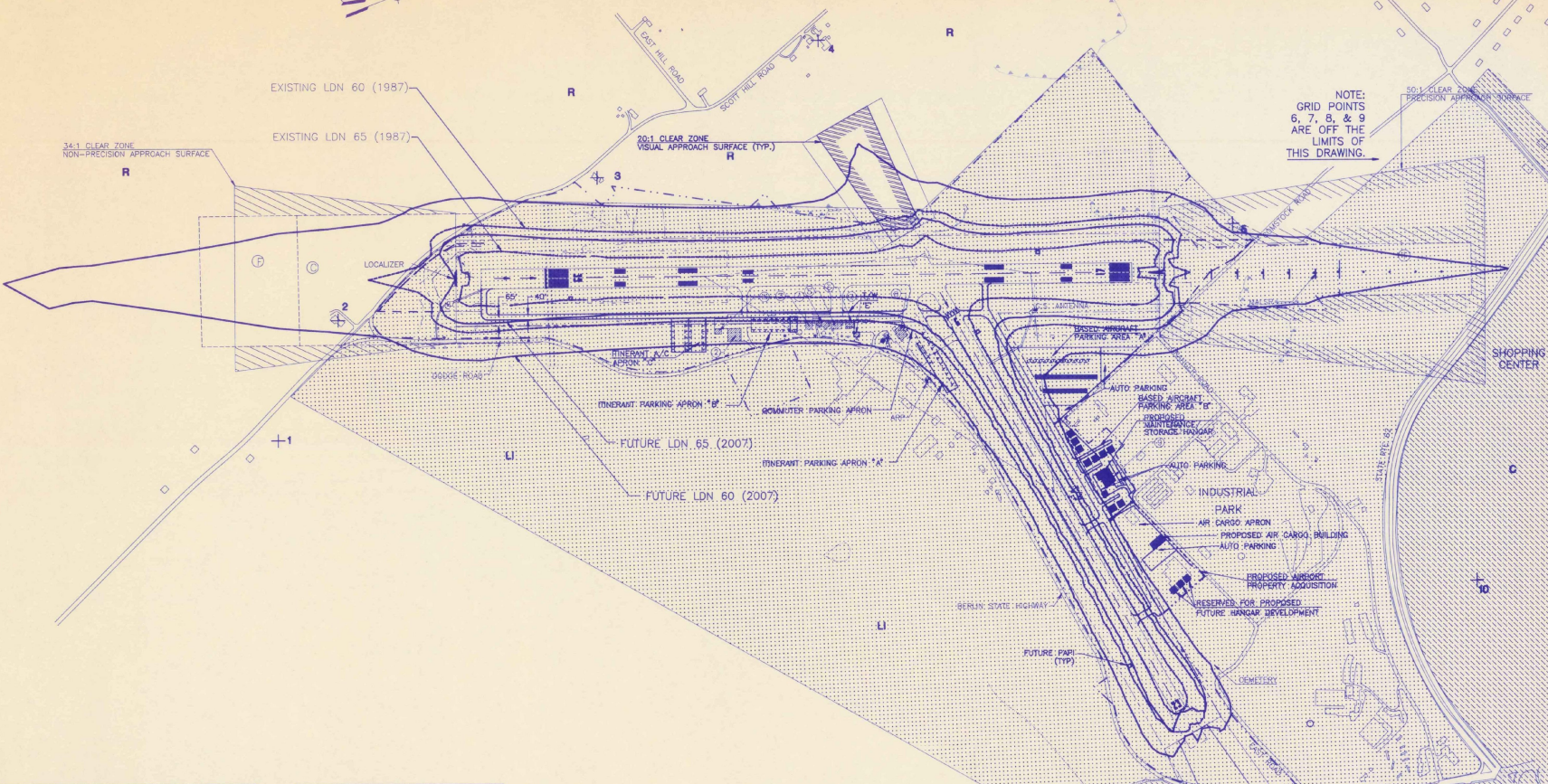
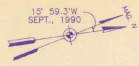


ENGINEER/ARCHITECT	
PROJECT NO.	60802
FILE NAME	60802ALP
DATE	00-00-0000
DESCRIPTION	
SCALE	1" = 100'
DATE	MARCH, 1991
USP	BY
DR	BY
HW	BY
CHK	BY
RCD	BY
Hoyle, Tanner & Associates, Inc. HTA engineers architects planners 100 Commerce Park North, Burlington, New Hampshire 03102 Companies Corporation	
EDWARD F. KNAPP STATE AIRPORT	
BERLIN, VERMONT	
TERMINAL AREA PLAN - NORTH	
DRAWING NO.	
5	
SHEET 5 OF 9	

ITEM	EXISTING	FUTURE
AIRPORT PROPERTY LINE	---	---
MISCELLANEOUS PROPERTY LINE	---	SAME
CONTOURS (USGS-MSL) DATUM	---	SAME
AIRPORT REFERENCE POINT (ARP)	●	SAME
AIRPORT ROTATING BEACON	○	SAME
BUILDING RESTRICTION LINE (B.R.L.)	---	---
AVIATION EASEMENT	---	---
FEE ACQUISITION	---	---
MISCELLANEOUS EASEMENTS	---	SAME
AIRPORT BUILDINGS/FACILITIES	---	SAME
MISC. BUILDINGS/FACILITIES	---	SAME
G.S./LOG. CRITICAL AREA	---	SAME
RUNWAYS/TAXIWAYS	---	SAME
MARSH/WETLAND	---	SAME
TREELINE/BRUSH	---	SAME
SURFACE WATER	---	SAME
RUNWAY VISIBILITY ZONE	---	SAME
SAFETY AREA	---	SAME
ROADS	---	SAME
RECORD OF EASEMENT (SEE DATA SHEET 9 OF 9)	---	---



NOTE:
SEE DATA SHEET (SHEET 3 OF 9) FOR ABUTTERS AND ADDITIONAL INFORMATION.
ABUTTING PROPERTY LINES ARE NOT TO SCALE.



NOTE:
GRID POINTS
6, 7, 8, & 9
ARE OFF THE
LIMITS OF
THIS DRAWING.

LEGEND		
ITEM	EXISTING	FUTURE
AIRPORT PROPERTY LINE	---	---
MISCELLANEOUS PROPERTY LINE	---	---
CONTROLLERS (CDS-MS) DATUM	+	+
AIRPORT REFERENCE POINT (ARP)	+	+
AIRPORT ROTATING BEACON	+	+
BUILDING RESTRICTION LINE (B.R.L.)	---	---
AVIGATION EASEMENT	---	---
TREE ACQUISITION	---	---
MISCELLANEOUS EASEMENTS	---	---
AIRPORT BUILDINGS/FACILITIES	---	---
MISC. BUILDINGS/FACILITIES	---	---
G.S./C.C. CRITICAL AREA	---	---
RUNWAYS/TAXIWAYS	---	---
MARSH/WETLAND	---	---
TREELINE/BRUSH	---	---
SURFACE WATER	---	---
RUNWAY VISIBILITY ZONE	---	---
SAFETY AREA	---	---
ROADS	---	---
RECORD OF EASEMENT (SEE DATA SHEET 3 OF 9)	+	+
GRID POINTS *	+	+

AIRPORT FACILITIES	
NO.	EXISTING
1	PRIVATE HANGAR
2	VERMONT FLYING SERVICE
3	HOLLE AUTO & AIR (HWA) (TBR)
4	GREEN MOUNTAIN AIR SALES (PRIVATE) (TBR)
5	STATE HANGAR (TBR)
6	VERMONT FLYING SERVICE (TBR)
7	MAINTENANCE BUILDING
8	TERMINAL BUILDING
9	RECENTLY ACQUIRED BUILDING

ZONING DISTRICTS	
C- COMMERCIAL	[Pattern]
LN- LIGHT INDUSTRIAL	[Pattern]
R- RURAL RESIDENTIAL	[Pattern]



NOTE:
SEE DATA SHEET (SHEET 3 OF 9) FOR ABUTTERS AND ADDITIONAL INFORMATION.
ABUTTING PROPERTY LINES ARE NOT TO SCALE.
* DETAILED INFORMATION AVAILABLE ABOUT NOISE CONTRIBUTORS AT THIS POINT, IN TECHNICAL REPORT CHAPTER 5.

ENGINEER/ARCHITECT	
PROJECT NO. 60802	
FILE NAME: 60802.DWG	DATE: 03/19/91
SCALE: 1"=400'	DATE: MARCH, 1991
DES. BY: JEP	CHECKED BY: JHM
DATE: MARCH, 1991	DATE: MARCH, 1991
EDWARD F. KNAPP STATE AIRPORT BERLIN, VERMONT	
NOISE CONTOURS AND LAND USE PLAN	
DRAWING NO. 9	
SHEET 9 OF 9	



U.S. Department
of Transportation
Federal Aviation
Administration

Air 03-2047
New England Region

12 New England Executive Park
Burlington, Massachusetts 01803

OCT 21 1991

X RECEIVED
OCT 25 1991
RAIL, AIR &
PUBLIC TRANSPORTATION

Patrick J. Garahan, Secretary
Vermont Agency of Transportation
133 State Street, Administration Building
Montpelier, Vermont 05602

Dear Mr. Garahan,

This letter acknowledges our acceptance of the E. F. Knapp State Airport Master Plan and our approval of the airport layout plan (ALP) prepared by Hoyle, Tanner and Associates of Bedford, NH under AIP grant 3-50-0001-0186 this date.

The development indicated on the ALP is approved subject to the following conditions:

As noted on sheet 2 of the ALP, waivers to design criteria for runway 17-35 safety areas, building restriction line, aircraft parking line and parallel taxiway separation are made a part of this approval. Buildings, now existing, which penetrate a 1000' wide primary surface for 17-35 are not required to be obstruction lighted.

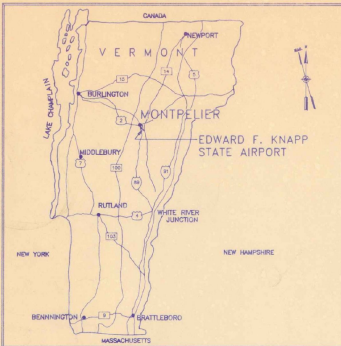
An environmental assessment for any proposed property acquisition and its intended use, will be prepared.

Review of this master plan and the ALP has been with respect to safety, efficiency and utilization, it does not represent a commitment to provide financial assistance to implement the proposed plan.

Sincerely,

William M. Cronan
William M. Cronan, Manager
Planning and Development Branch

cc: Ludders, HTA



LOCATION MAP
NOT TO SCALE

**STATE OF VERMONT
AGENCY OF TRANSPORTATION
MASTER PLAN
EDWARD F. KNAPP
STATE AIRPORT**

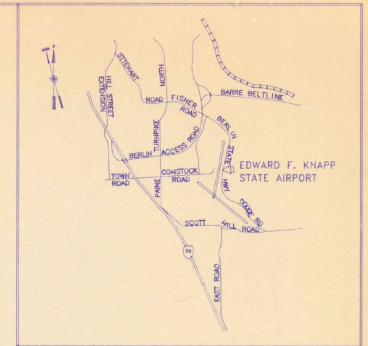
FAA PROJECT NO. 3-50-0001-0186
VAOT PROJECT NO. AIR 03-2047

INDEX TO DRAWINGS

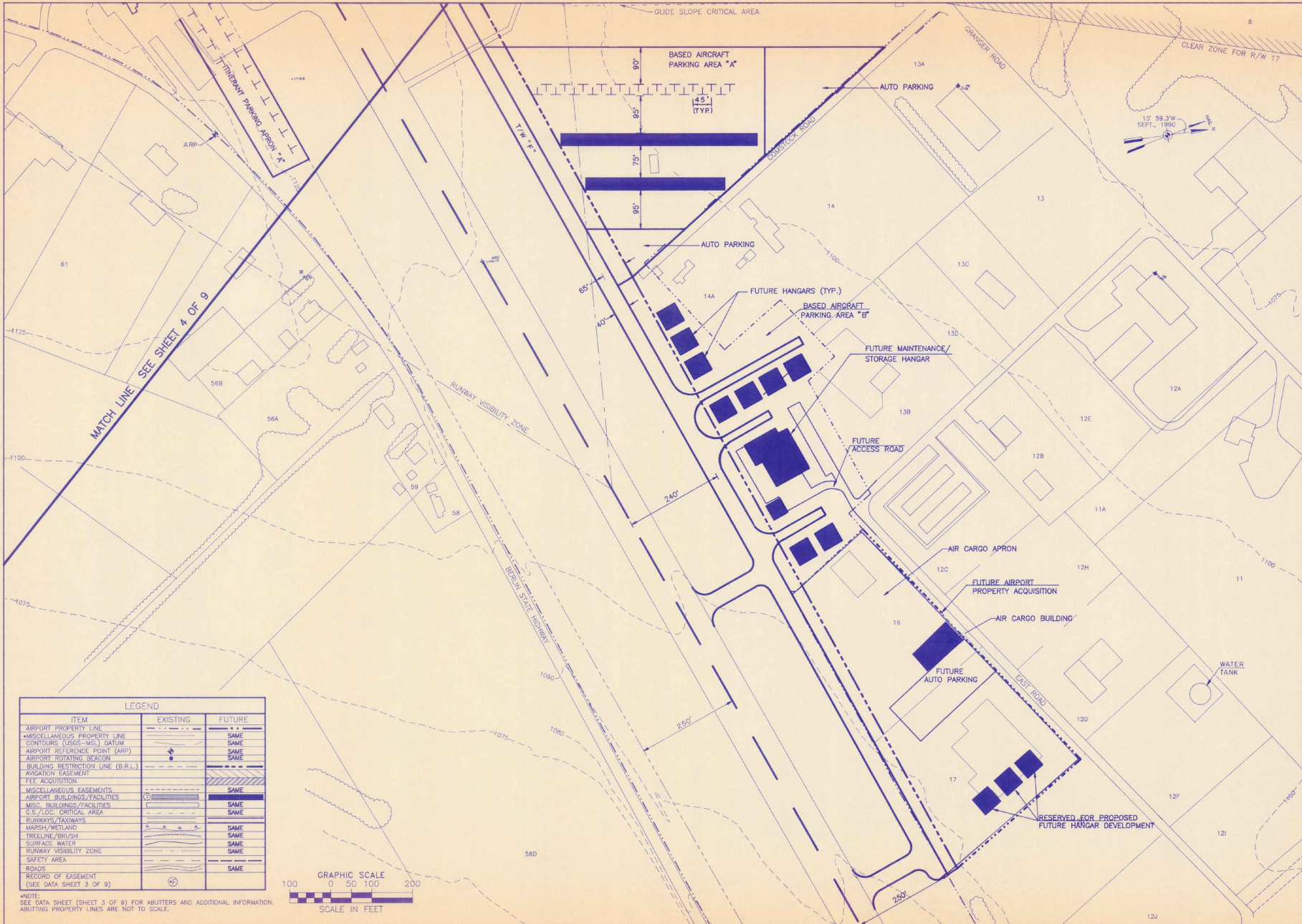
1. EXISTING AIRPORT LAYOUT PLAN
2. AIRPORT LAYOUT PLAN
3. DATA SHEET
4. TERMINAL AREA PLAN - SOUTH
5. TERMINAL AREA PLAN - NORTH
6. AIRPORT IMAGINARY SURFACES PLAN
7. PLAN AND PROFILE RUNWAY 17-35
8. PLAN AND PROFILE RUNWAY 5-23
9. LAND USE PLAN

MARCH, 1991

**HOYLE, TANNER & ASSOCIATES, INC.
ENGINEERS/ARCHITECTS/PLANNERS/SURVEYORS
BEDFORD, NEW HAMPSHIRE**

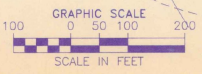


VICINITY MAP
NOT TO SCALE

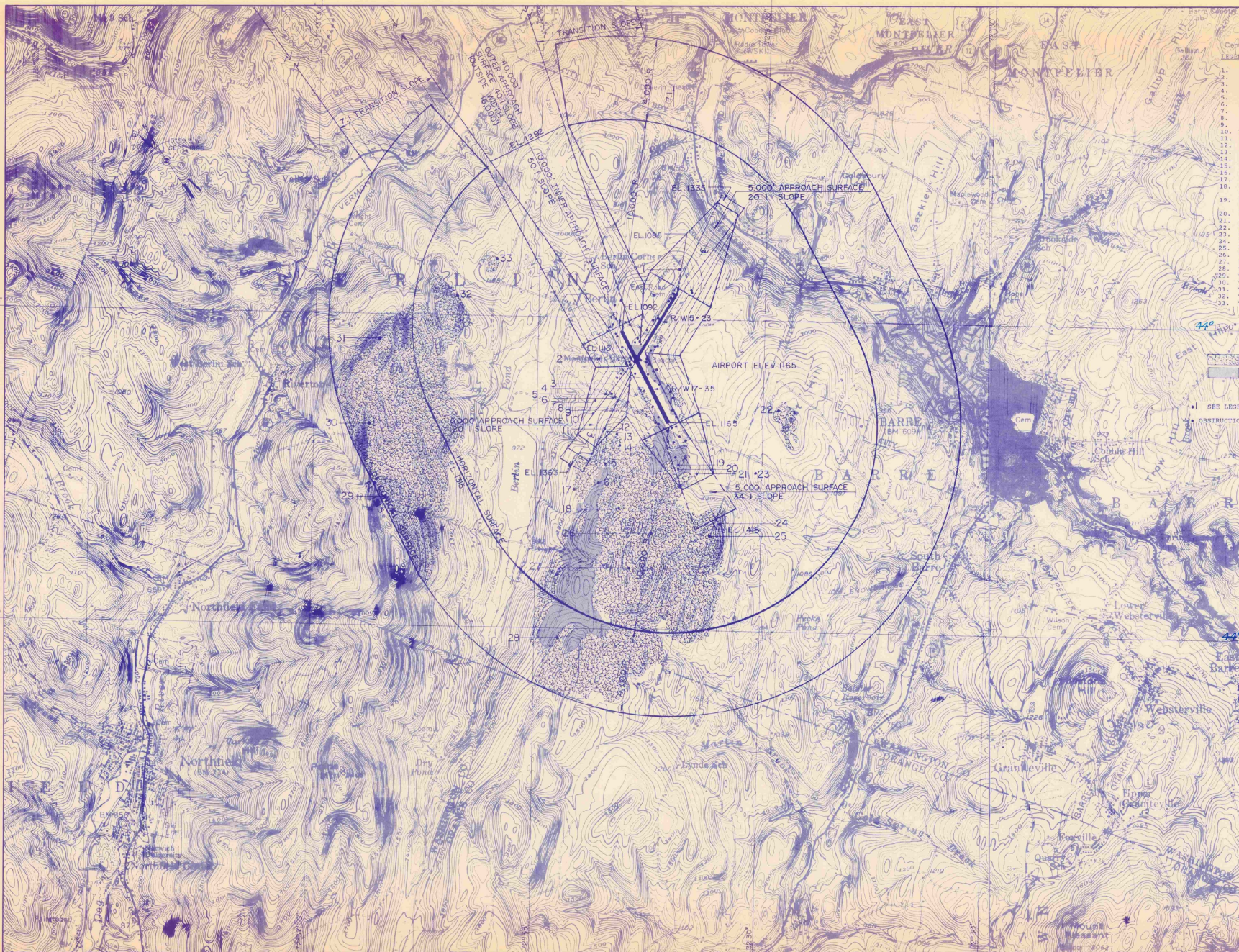


LEGEND		
ITEM	EXISTING	FUTURE
AIRPORT PROPERTY LINE	---	---
MISCELLANEOUS PROPERTY LINE	---	SAME
CONTOURS (UGCS-VGL) DATUM	---	SAME
AIRPORT REFERENCE POINT (ARP)	+	SAME
AIRPORT ROTATING BEACON	+	SAME
BUILDING RESTRICTION LINE (B.R.L.)	---	---
AVIATION EASEMENT	---	---
FEE ACQUISITION	---	SAME
MISCELLANEOUS EASEMENTS	---	SAME
AIRPORT BUILDINGS/FACILITIES	---	SAME
MISC. BUILDINGS/FACILITIES	---	SAME
G.S./LOC. CRITICAL AREA	---	SAME
RUNWAYS/TAXIWAYS	---	SAME
MARSH/WETLAND	---	SAME
TREELINE/BRUSH	---	SAME
SURFACE WATER	---	SAME
RUNWAY VISIBILITY ZONE	---	SAME
SAFETY AREA	---	SAME
ROADS	---	SAME
RECORD OF EASEMENT	---	SAME
(SEE DATA SHEET 3 OF 9)	---	SAME

*NOTE:
SEE DATA SHEET (SHEET 3 OF 9) FOR ABUTTERS AND ADDITIONAL INFORMATION.
ABUTTING PROPERTY LINES ARE NOT TO SCALE.



ENGINEER/ARCHITECT	
PROJECT NO.	60802
DATE	10/11/90
DESIGNED BY	EDENTOLP
CHECKED BY	
DATE	
DESCRIPTION	
REV.	
NO. FOR SOURCE DRAWING	
CHD. BY	RJD
OR. BY	HW
CEL. BY	JEP
DATE	MARCH, 1991
SCALE	1"=100'
Hoyle, Tanner & Associates, Inc. engineers architects planners environmental consultants 110 Commerce Park North, Bedford, New Hampshire 03122	
EDWARD F. KNAPP STATE AIRPORT BERLIN, VERMONT	
TERMINAL AREA PLAN-NORTH	
DRAWING NO.	
5	
SHEET 5 OF 9	



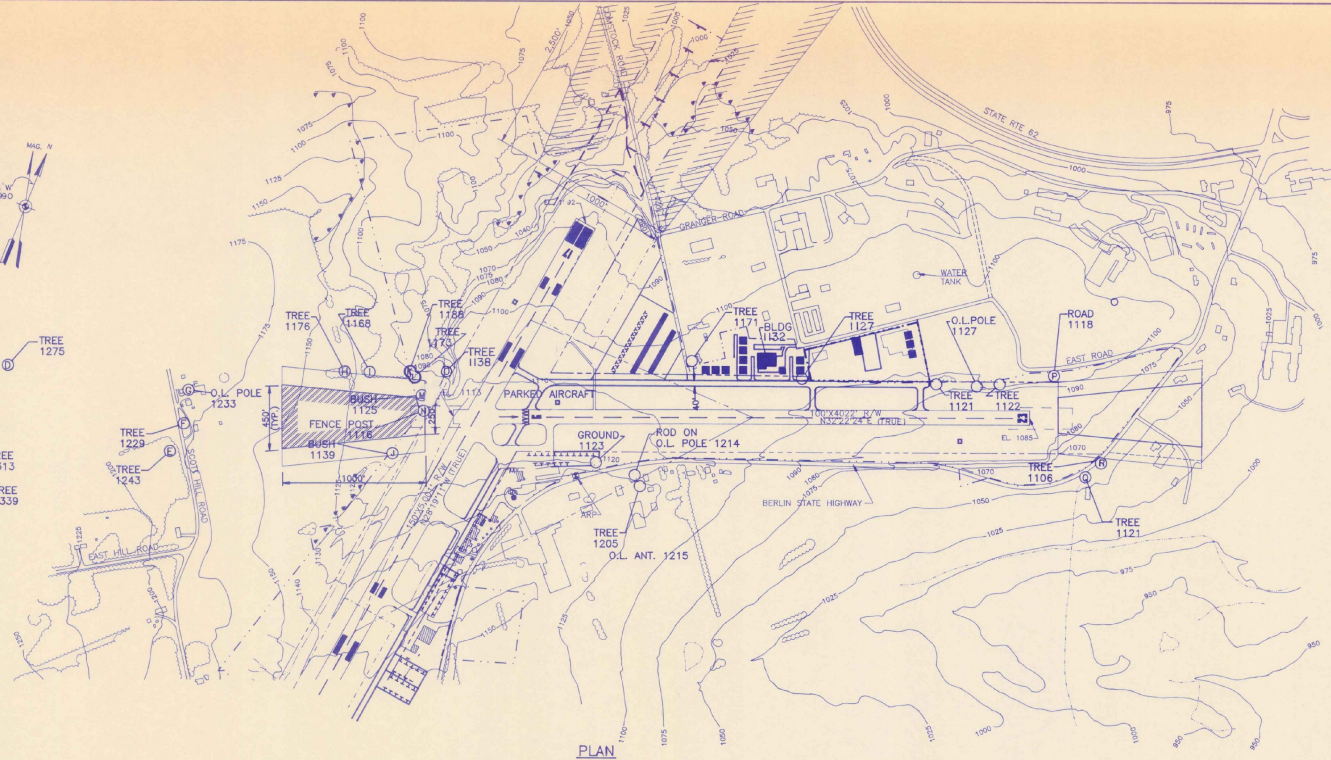
- LEGEND
1. Tree - EL 1137
 2. Tree - EL 1233
 3. Tree - EL 1229
 4. Obst. LT POLE 1233
 5. Pole - EL 1217
 6. Road (N) - EL 1192
 7. Tree - EL 1252
 8. Tree - EL 1243
 9. Pole EL - 1202
 10. Tree - EL 1275
 11. Tree - EL 1313
 12. Tree - EL 1339
 13. Tree - 1360
 14. Tree - EL 1403
 15. Tree - EL 1395
 16. Tree - EL 1365
 17. Tree - EL 1371
 18. Obst. LT on Tower - EL 1572
 19. Obst. LT on Pole - 1334
 20. Tree - 1384
 21. Tree - 1297
 22. Tree EL - 1343
 23. Tree EL - 1327
 24. Tree - 1400
 25. Tree - 1511
 26. Tree EL - 1603
 27. Tree EL - 1640
 28. Tree - EL 1575
 29. Tree - EL 2161
 30. Tree - EL 1820
 31. Tree - EL 1640
 32. Tree - EL 1400
 33. Tree - EL 1359

TREE PENETRATION
 GROUND PENETRATION
 SEE LEGEND THIS SHEET
 CONSTRUCTION SEE SHEETS 7 OR 8

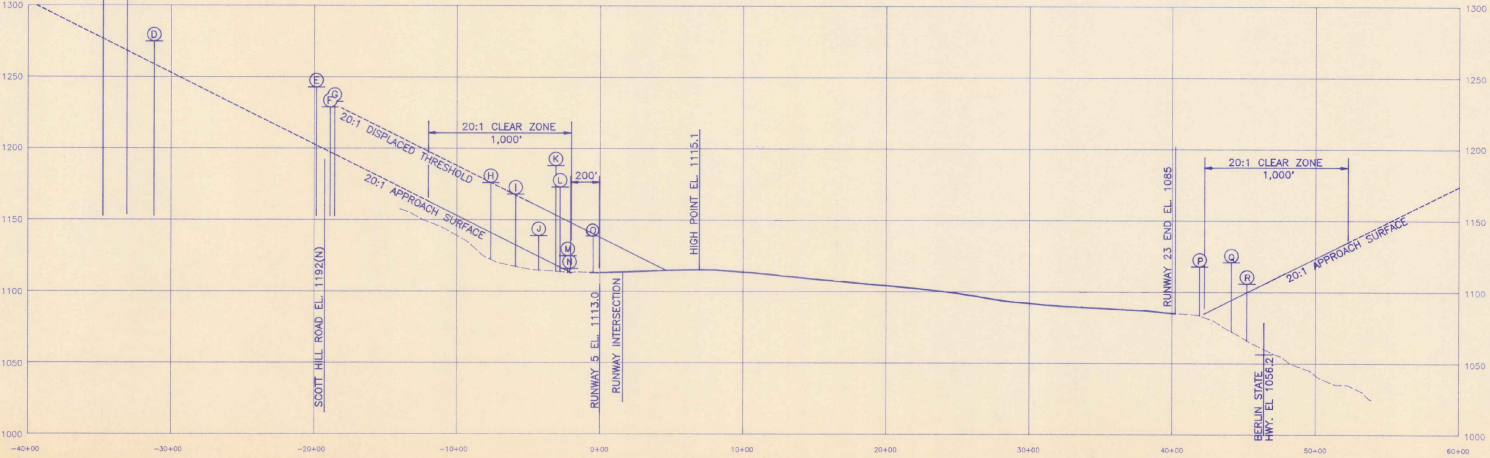
ENGINEER/ARCHITECT	
PROJECT NO	60802
 Hoyle, Tanner & Associates, Inc. <small>Five Commerce Park North Barford NH 03102 (603) 669-5555</small>	
DATE	MARCH, 1991
SCALE	1" = 2000'
DRAWN BY	TAV
CHECKED BY	TAV
DATE	MARCH, 1991
SCALE	1" = 2000'
DRAWN BY	TAV
CHECKED BY	TAV
DATE	MARCH, 1991
SCALE	1" = 2000'
DRAWN BY	TAV
CHECKED BY	TAV
DATE	MARCH, 1991
SCALE	1" = 2000'
DRAWN BY	TAV
CHECKED BY	TAV
DATE	MARCH, 1991
SCALE	1" = 2000'
DRAWN BY	TAV
CHECKED BY	TAV
DATE	MARCH, 1991
SCALE	1" = 2000'
DRAWN BY	TAV
CHECKED BY	TAV
DATE	MARCH, 1991
SCALE	1" = 2000'
DRAWN BY	TAV
CHECKED BY	TAV
DATE	MARCH, 1991
SCALE	1" = 2000'
DRAWN BY	TAV
CHECKED BY	TAV
DATE	MARCH, 1991
SCALE	1" = 2000'
DRAWN BY	TAV
CHECKED BY	TAV
DATE	MARCH, 1991
SCALE	1" = 2000'
DRAWN BY	TAV
CHECKED BY	TAV
DATE	MARCH, 1991
SCALE	1" = 2000'
DRAWN BY	TAV
CHECKED BY	TAV
DATE	MARCH, 1991
SCALE	1" = 2000'
DRAWN BY	TAV
CHECKED BY	TAV
DATE	MARCH, 1991
SCALE	1" = 2000'
DRAWN BY	TAV
CHECKED BY	TAV
DATE	MARCH, 1991
SCALE	1" = 2000'
DRAWN BY	TAV
CHECKED BY	TAV
DATE	MARCH, 1991
SCALE	1" = 2000'
DRAWN BY	TAV
CHECKED BY	TAV
DATE	MARCH, 1991
SCALE	1" = 2000'
DRAWN BY	TAV
CHECKED BY	TAV
DATE	MARCH, 1991
SCALE	1" = 2000'
DRAWN BY	TAV
CHECKED BY	TAV
DATE	MARCH, 1991
SCALE	1" = 2000'
DRAWN BY	TAV
CHECKED BY	TAV
DATE	MARCH, 1991
SCALE	1" = 2000'
DRAWN BY	TAV
CHECKED BY	TAV
DATE	MARCH, 1991
SCALE	1" = 2000'
DRAWN BY	TAV
CHECKED BY	TAV
DATE	MARCH, 1991
SCALE	1" = 2000'
DRAWN BY	TAV
CHECKED BY	TAV
DATE	MARCH, 1991
SCALE	1" = 2000'
DRAWN BY	TAV
CHECKED BY	TAV
DATE	MARCH, 1991
SCALE	1" = 2000'
DRAWN BY	TAV
CHECKED BY	TAV
DATE	MARCH, 1991
SCALE	1" = 2000'
DRAWN BY	TAV
CHECKED BY	TAV
DATE	MARCH, 1991
SCALE	1" = 2000'
DRAWN BY	TAV
CHECKED BY	TAV
DATE	MARCH, 1991
SCALE	1" = 2000'
DRAWN BY	TAV
CHECKED BY	TAV
DATE	MARCH, 1991
SCALE	1" = 2000'
DRAWN BY	TAV
CHECKED BY	TAV
DATE	MARCH, 1991
SCALE	1" = 2000'
DRAWN BY	TAV
CHECKED BY	TAV
DATE	MARCH, 1991
SCALE	1" = 2000'
DRAWN BY	TAV
CHECKED BY	TAV
DATE	MARCH, 1991
SCALE	1" = 2000'
DRAWN BY	TAV
CHECKED BY	TAV
DATE	MARCH, 1991
SCALE	1" = 2000'
DRAWN BY	TAV
CHECKED BY	TAV
DATE	MARCH, 1991
SCALE	1" = 2000'
DRAWN BY	TAV
CHECKED BY	TAV
DATE	MARCH, 1991
SCALE	1" = 2000'
DRAWN BY	TAV
CHECKED BY	TAV
DATE	MARCH, 1991
SCALE	1" = 2000'
DRAWN BY	TAV
CHECKED BY	TAV
DATE	MARCH, 1991
SCALE	1" = 2000'
DRAWN BY	TAV
CHECKED BY	TAV
DATE	MARCH, 1991
SCALE	1" = 2000'
DRAWN BY	TAV
CHECKED BY	TAV
DATE	MARCH, 1991
SCALE	1" = 2000'
DRAWN BY	TAV
CHECKED BY	TAV
DATE	MARCH, 1991
SCALE	1" = 2000'
DRAWN BY	TAV
CHECKED BY	TAV
DATE	MARCH, 1991
SCALE	1" = 2000'
DRAWN BY	TAV
CHECKED BY	TAV
DATE	MARCH, 1991
SCALE	1" = 2000'
DRAWN BY	TAV
CHECKED BY	TAV
DATE	MARCH, 1991
SCALE	1" = 2000'
DRAWN BY	TAV
CHECKED BY	TAV
DATE	MARCH, 1991
SCALE	1" = 2000'
DRAWN BY	TAV
CHECKED BY	TAV
DATE	MARCH, 1991
SCALE	1" = 2000'
DRAWN BY	TAV
CHECKED BY	TAV
DATE	MARCH, 1991
SCALE	1" = 2000'
DRAWN BY	TAV
CHECKED BY	TAV
DATE	MARCH, 1991
SCALE	1" = 2000'
DRAWN BY	TAV
CHECKED BY	TAV
DATE	MARCH, 1991
SCALE	1" = 2000'
DRAWN BY	TAV
CHECKED BY	TAV
DATE	MARCH, 1991
SCALE	1" = 2000'
DRAWN BY	TAV
CHECKED BY	TAV
DATE	MARCH, 1991
SCALE	1" = 2000'
DRAWN BY	TAV
CHECKED BY	TAV
DATE	MARCH, 1991
SCALE	1" = 2000'
DRAWN BY	TAV
CHECKED BY	TAV
DATE	MARCH, 1991
SCALE	1" = 2000'
DRAWN BY	TAV
CHECKED BY	TAV
DATE	MARCH, 1991
SCALE	1" = 2000'
DRAWN BY	TAV
CHECKED BY	TAV
DATE	MARCH, 1991
SCALE	1" = 2000'
DRAWN BY	TAV
CHECKED BY	TAV
DATE	MARCH, 1991
SCALE	1" = 2000'
DRAWN BY	TAV
CHECKED BY	TAV
DATE	MARCH, 1991
SCALE	1" = 2000'
DRAWN BY	TAV
CHECKED BY	TAV
DATE	MARCH, 1991
SCALE	1" = 2000'
DRAWN BY	TAV
CHECKED BY	TAV
DATE	MARCH, 1991
SCALE	1" = 2000'
DRAWN BY	TAV
CHECKED BY	TAV
DATE	MARCH, 1991
SCALE	1" = 2000'
DRAWN BY	TAV
CHECKED BY	TAV
DATE	MARCH, 1991
SCALE	1" = 2000'
DRAWN BY	TAV
CHECKED BY	TAV
DATE	MARCH, 1991
SCALE	1" = 2000'
DRAWN BY	TAV
CHECKED BY	TAV
DATE	MARCH, 1991
SCALE	1" = 2000'
DRAWN BY	TAV
CHECKED BY	TAV
DATE	MARCH, 1991
SCALE	1" = 2000'
DRAWN BY	TAV
CHECKED BY	TAV
DATE	MARCH, 1991
SCALE	1" = 2000'
DRAWN BY	TAV
CHECKED BY	TAV
DATE	MARCH, 1991
SCALE	1" = 2000'
DRAWN BY	TAV
CHECKED BY	TAV
DATE	MARCH, 1991
SCALE	1" = 2000'
DRAWN BY	TAV
CHECKED BY	TAV
DATE	MARCH, 1991
SCALE	1" = 2000'
DRAWN BY	TAV
CHECKED BY	TAV
DATE	MARCH, 1991
SCALE	1" = 2000'
DRAWN BY	TAV
CHECKED BY	TAV
DATE	MARCH, 1991
SCALE	1" = 2000'
DRAWN BY	TAV
CHECKED BY	TAV
DATE	MARCH, 1991
SCALE	1" = 2000'
DRAWN BY	TAV
CHECKED BY	TAV
DATE	MARCH, 1991
SCALE	1" = 2000'
DRAWN BY	TAV
CHECKED BY	TAV
DATE	MARCH, 1991
SCALE	1" = 2000'
DRAWN BY	TAV
CHECKED BY	TAV
DATE	MARCH, 1991
SCALE	1" = 2000'
DRAWN BY	



- ⑩ TREE 1275
- ⑨ TREE 1313
- ⑧ TREE 1339
- ⑦ TREE 1229
- ⑥ TREE 1243
- ⑤ TREE 1360
- ④
- ③
- ②
- ①

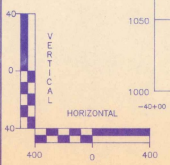


PLAN
SCALE: 1"=400'



PROFILE

- ⓔ - OBSTRUCTIONS TO RUNWAY 5-23 APPROACH SURFACES
- Ⓞ - OBSTRUCTIONS TO RUNWAY 5-23 PRIMARY OR TRANSITIONAL SURFACES



ENGINEER/ARCHITECT	
PROJECT NO.	60802
FILE NAME	60802P5
DATE	MARCH, 1991
SCALE	AS SHOWN
DATE	MARCH, 1991
BY	EP
CHKD.	BY
BY	HW
BY	RJD
DESCRIPTION	
REV.	
NO.	
DATE	
BY	
CHKD.	
BY	
DESCRIPTION	

Edward F. Knapp State Airport
Berlin, Vermont

PLAN & PROFILE
RUNWAY 5-23

DRAWING NO. 8

SHEET 8 OF 9

