

- EXISTING FACILITIES.
- DEVELOPMENT INCLUDED IN FORM SF-3.
- ADDITIONAL PROPOSED DEVELOPMENT.

**BARRE-MONTPELIER AIRPORT  
MASTER PLAN LAYOUT**

Scale 1" = 200'      Nov 1940

Thurman W. Dix, City Eng'r  
Barre, Vt.

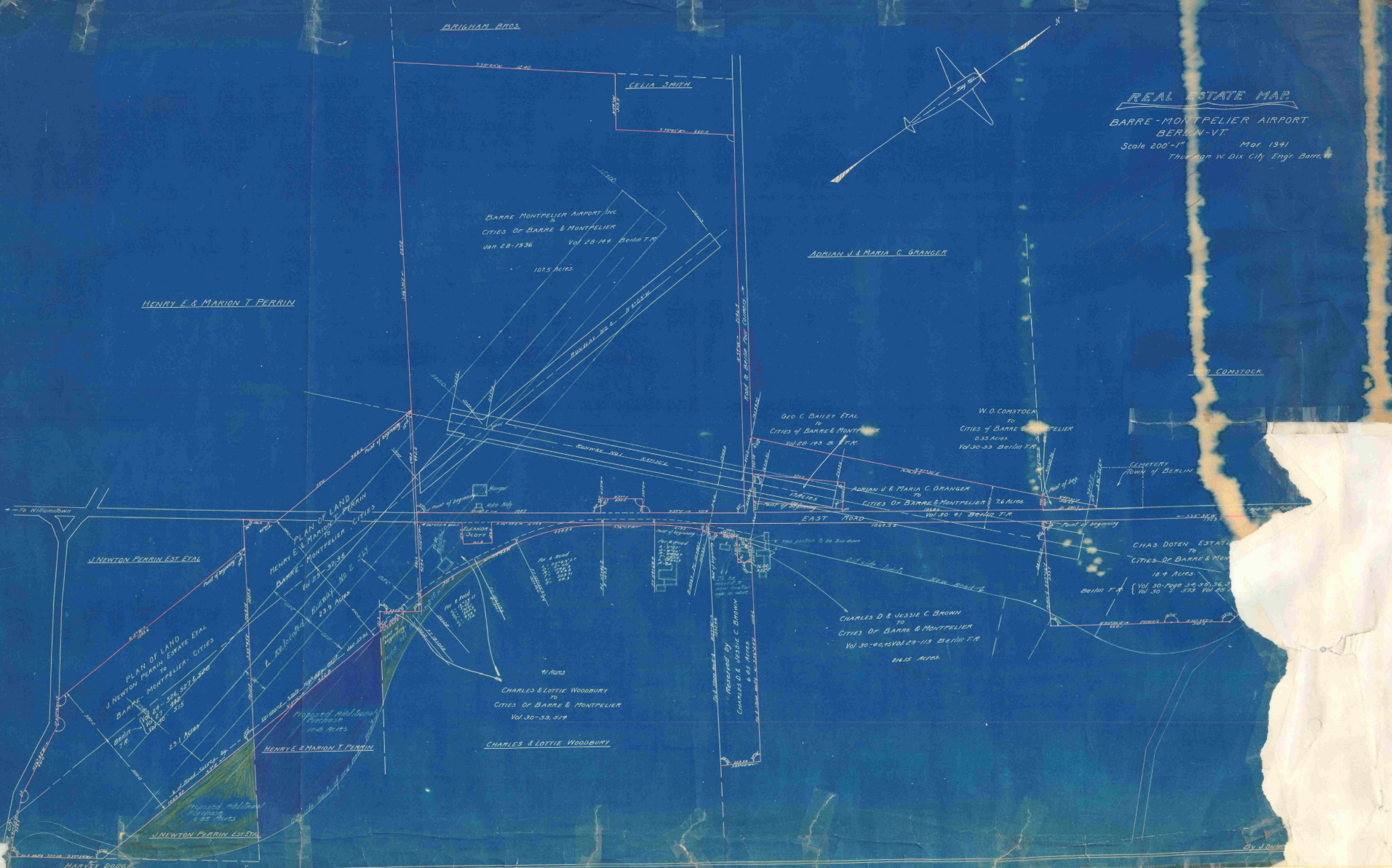
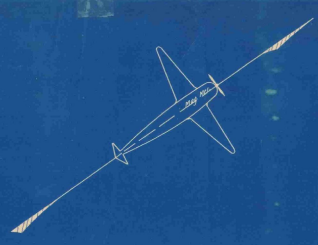
Drawing by John D. Cook

NOTE:  
The shown survey for this plan  
was made generally for the purpose  
of giving location of lines, etc.,  
and does not justify certain  
of them.

Dodge

D. C. Cook

**REAL ESTATE MAP**  
**BARRE-MONTPELIER AIRPORT**  
**BERLIN-VT**  
 Scale 200'-1"      Mar. 1941  
 Traced from W. Dix City Engr. Barre, Vt.



HENRY F. & MARION T. PERRIN

BARRE-MONTPELIER AIRPORT, INC.  
 TO  
 CITIES OF BARRE & MONTPELIER  
 JAN. 28-1936      Vol. 20-192    BEHAT T.R.  
 107.5 ACRES

ADRIAN J. & MARIA C. GRANGER

W. O. CONSTOCK

GEO. C. BAILEY ETAL  
 TO  
 CITIES OF BARRE & MONTPELIER  
 VOL. 20-193    B. T.R.

W. O. CONSTOCK  
 TO  
 CITIES OF BARRE & MONTPELIER  
 DEEDS  
 VOL. 20-222    BEHAT T.R.

ADRIAN J. & MARIA C. GRANGER  
 TO  
 CITIES OF BARRE & MONTPELIER    76 ACRES  
 VOL. 20-41    BEHAT T.R.

SECRETARY  
 TOWN OF BERLIN

CHAS. DOTEN, ESTATE  
 TO  
 CITIES OF BARRE & MONTPELIER  
 18.9 ACRES  
 BEHAT T.R.      Vol. 30-Page 39, 43, 36, 37  
 Vol. 30-Page 353, 101, 25

CHARLES D. & JESSIE C. BROWN  
 TO  
 CITIES OF BARRE & MONTPELIER  
 Vol. 30-403 Vol. 20-113    BEHAT T.R.  
 24.6 ACRES

19 ACRES  
 CHARLES & LOTTIE WOODBURY  
 TO  
 CITIES OF BARRE & MONTPELIER  
 Vol. 30-33, 319

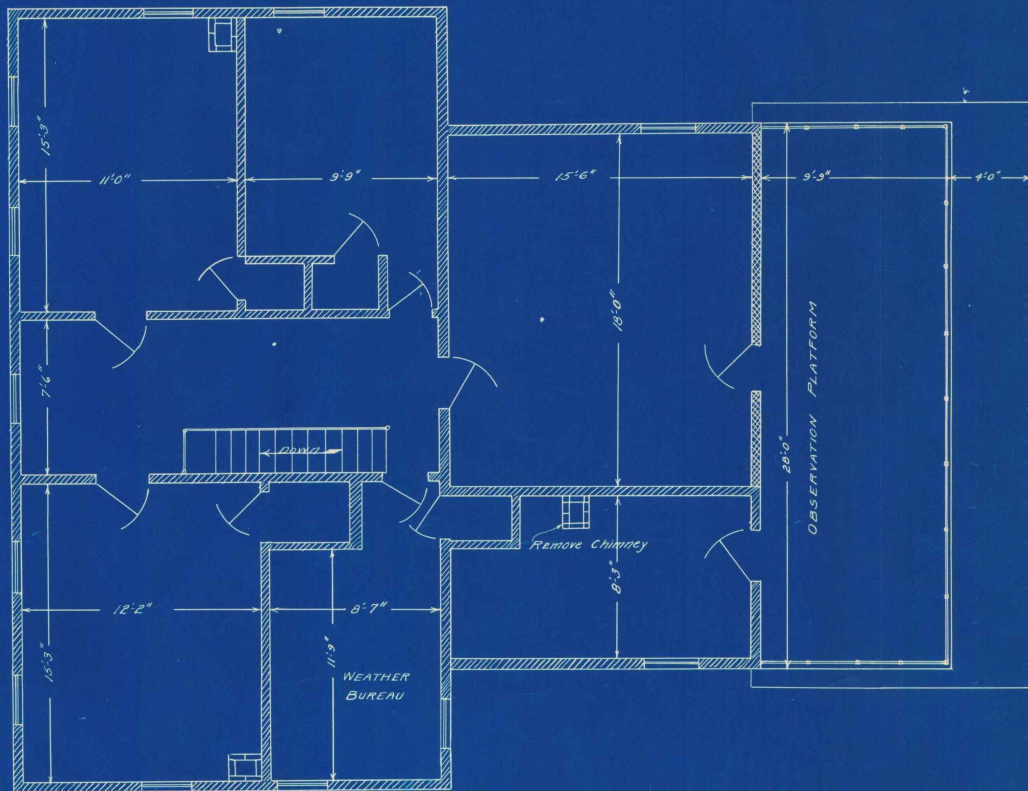
CHARLES & LOTTIE WOODBURY

PLAN OF LAND  
 TO  
 J. NEWTON PERRIN ESTATE ETAL  
 TO  
 BARRE & MONTPELIER, CITIES  
 BEHAT T.R.      Vol. 20-Page 321, 322 & 323  
 23.1 ACRES

HENRY F. & MARION T. PERRIN  
 Proposed additional  
 Purchase  
 100.0 ACRES

J. NEWTON PERRIN ESTATE

HARVEY DOOGS



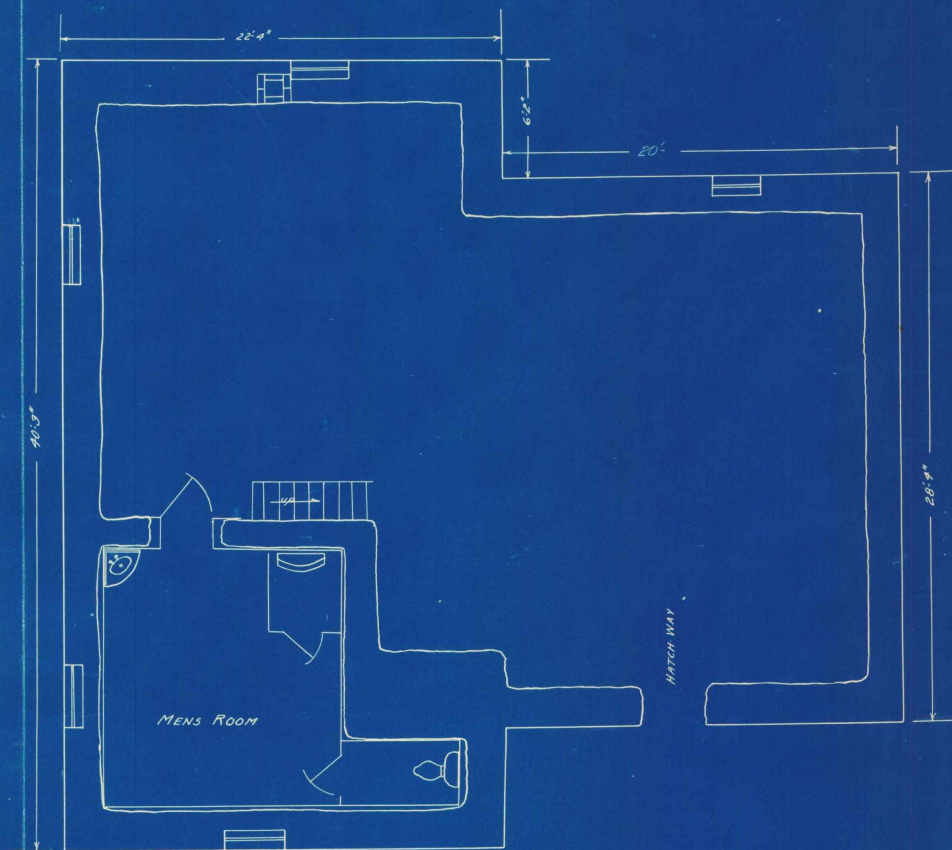
ADMINISTRATION BUILDING  
 BARRE-MONTPELIER AIRPORT  
 SECOND FLOOR PLAN.  
 Scale 1"=4' Dec. 1940

APPROVED } W.P.A.  
 APPROVED } N.E. EAST AIR LINES  
 APPROVED } B. & M. AIRPORT COMM.

Traced by J. D. Cook A.E.

APPROVED } N.E. EAST AIR LINES  
 APPROVED } B. & M. AIRPORT COMM.

Traced by J. D. Cook A.E.



ADMINISTRATION BUILDING  
 BARRE - MONTPELIER AIRPORT  
 BASEMENT PLAN  
 Scale 1"=4'

Dec 1940

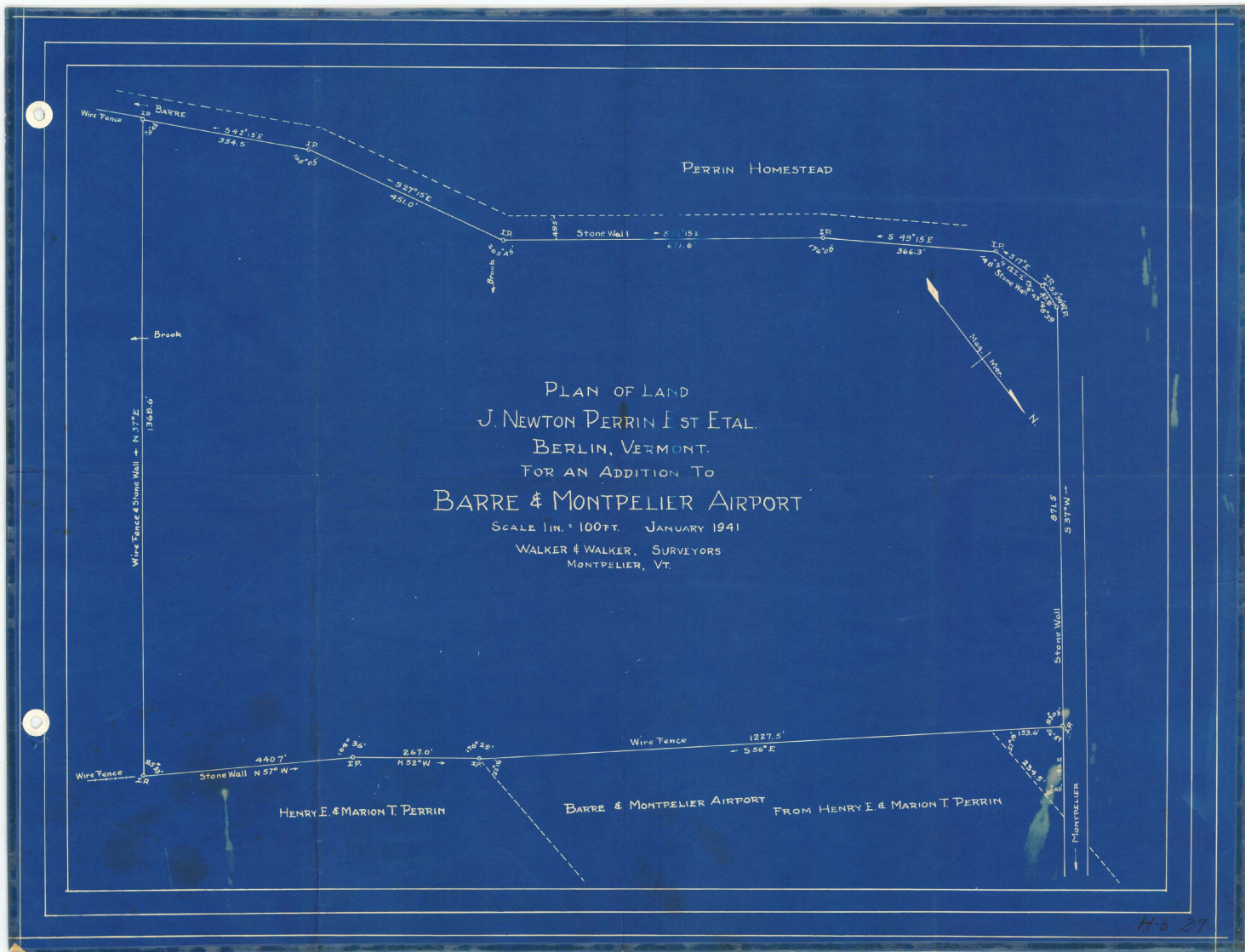
Designed by T.W.DIX.

APPROVED

W.R.A.
NO. EAST AIR LINES
B. & M. AIRPORT COMM.

Traced by J.D. GUL. AE

Traced by J. Parker Cook, P.E.



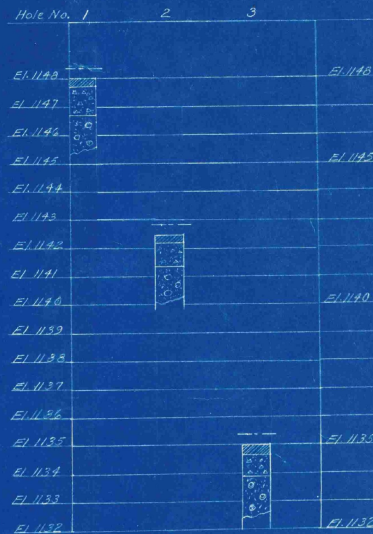


SOIL ANALYSIS AND CLASSIFICATION  
FROM LABORATORY TESTS

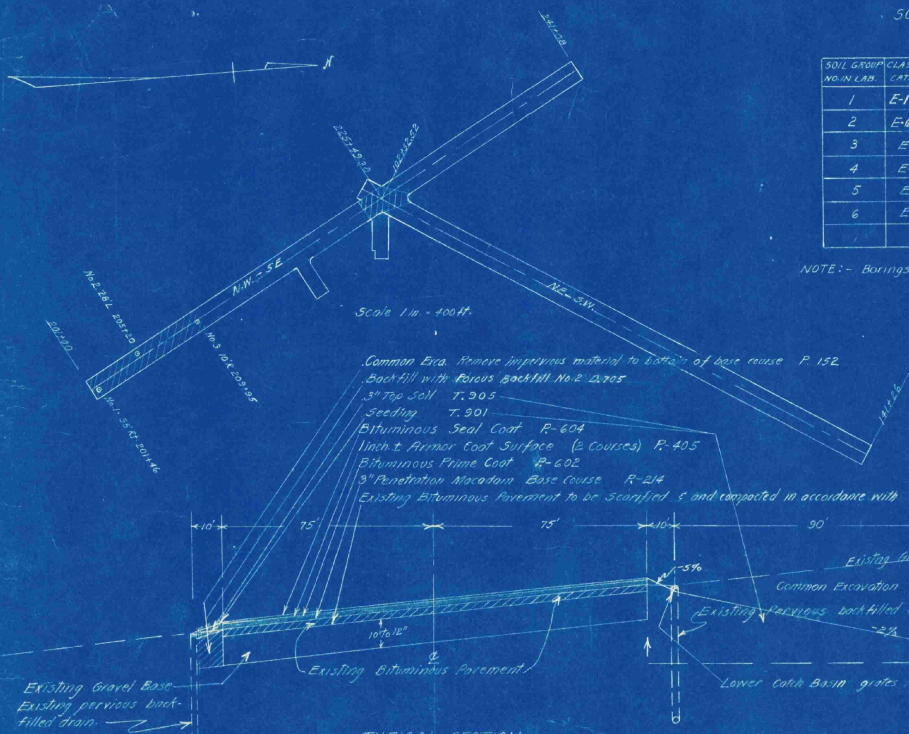
SOIL GROUP NO. IN LAB.	CLASSIFICATION	SOIL IDENTITY	WATER CONTENT NO. & VALUE	LIQUID LIMIT	PLASTICITY INDEX	FLUIDITY NO. & VALUE	FLUIDITY INDEX	FLUIDITY NO. & VALUE	FLUIDITY INDEX
1	E-1	Coarse gravel	59.5	24.4	0.2	78.0	11.0		
2	E-6	Clayey coarse soil	14.3	26.2	10.0	20.0	20.0	60.0	
3	E-1		59.0	27.2	3.6	91.0	13.0	26.0	
4	E-6		11.3	26.2	6.5	15.0	23.0	62.0	
5	E-1		60.0	24.8	3.0	69.5	15.5	15.0	
6	E-6		23.9	27.7	7.8	22.0	26.0	7.6	

NOTE: - Borings made and samples taken during month of April 1950

SOIL BORINGS

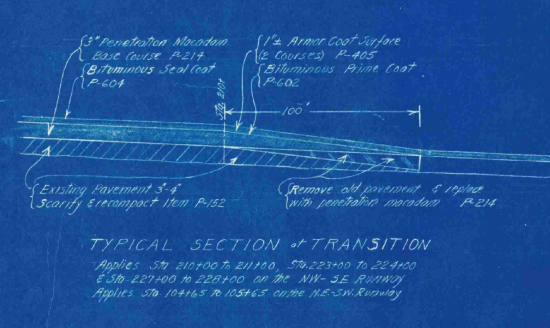
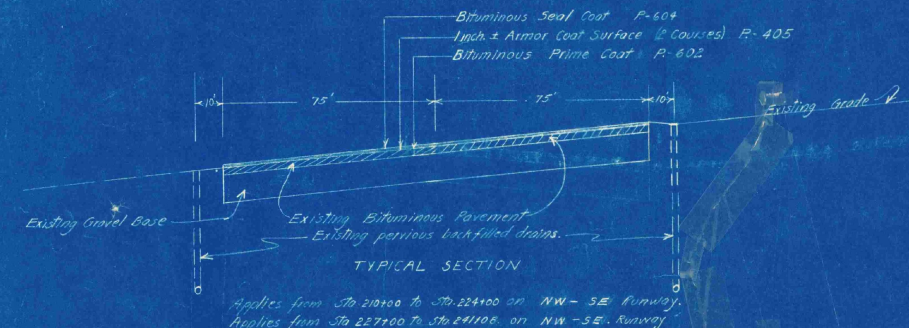


- Bituminous Concrete Pavement
- E-1 Coarse Gravel
- E-6 Clayey, coarse soil
- Finished grade shown on chart.



Common Era. Remove impurities material to bottom of base course P-152  
Backfill with porous backfill No. 2 gravel  
3" Top Soil T-303  
Seeding T-301  
Bituminous Seal Coat P-604  
1/2" ± Armor Coat Surface (2 Courses) P-405  
Bituminous Prime Coat P-602  
3" Penetration Macadam Base Course P-214  
Existing Bituminous Pavement to be scarified & compacted in accordance with C.A.A. Spec. P-152

TYPICAL SECTION  
Applies from Sta. 201+00 to Sta. 210+00, NW-SE Runway  
Sta. 227+00 to Sta. 227+00 on NW-SE Runway, the 150 ft paved area only applies.

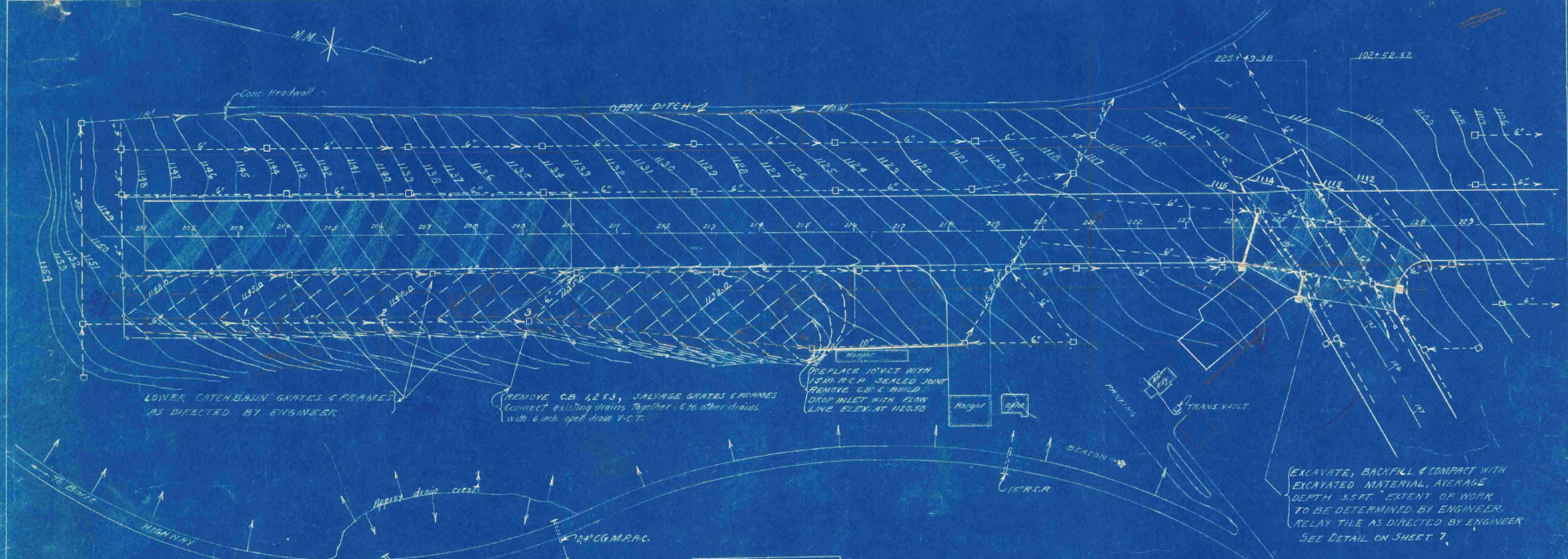


TYPICAL SECTION OF TRANSITION  
Applies Sta. 210+00 to Sta. 211+00, Sta. 223+00 to Sta. 224+00  
Sta. 227+00 to Sta. 228+00 on the NW-SE Runway  
Applies Sta. 104+65 to 105+65 on the NE-SW Runway

STATE OF VERMONT  
BARRE-MONTPELIER AIRPORT  
BERLIN, VERMONT.

LOG OF BORINGS  
TYPICAL SECTIONS

John D. Cook, Engr. Barre, Vt.  
CHECKED DATE 6/28/50 SHEET 3 OF 18  
DRAWN BY J.D. COOK

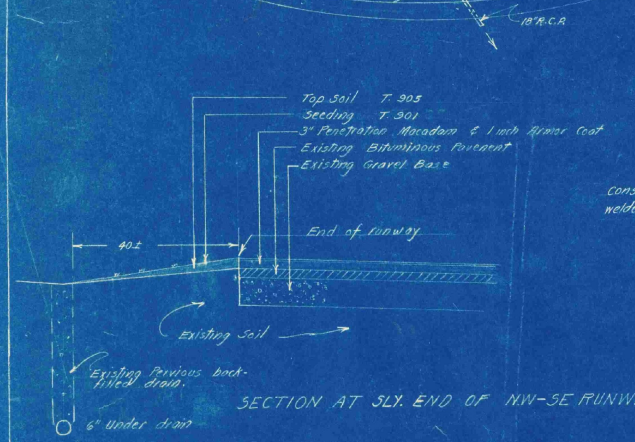


LOWER CATCH-BASIN GRATES & FRAMES AS DIRECTED BY ENGINEER

REMOVE CB 1253, SALVAGE GRATES & FRAMES. Connect existing drains together & to other drains with 6" dia. open drain V.C.T.

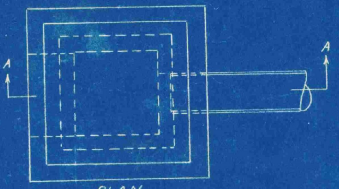
REPLACE 10" V.C.T. WITH 12" CG.M.P.A.C. SETBACK JOINT. REMOVE CB & BUILD DROP INLET WITH FLOW LINE ELEV. AT 116.50

EXCAVATE, BACKFILL & COMPACT WITH EXCAVATED MATERIAL, AVERAGE DEPTH 3.5 FT. EXTENT OF WORK TO BE DETERMINED BY ENGINEER. RELAY TILE AS DIRECTED BY ENGINEER. SEE DETAIL ON SHEET 7.

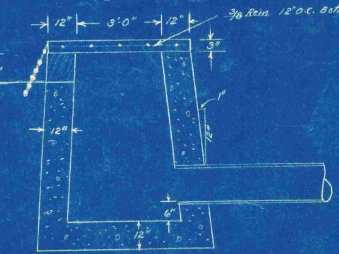


SECTION AT SLY. END OF NW-SE RUNWAY

Construct grate of 3/4" mesh welded bars 24" x 48"



PLAN



SECTION AA

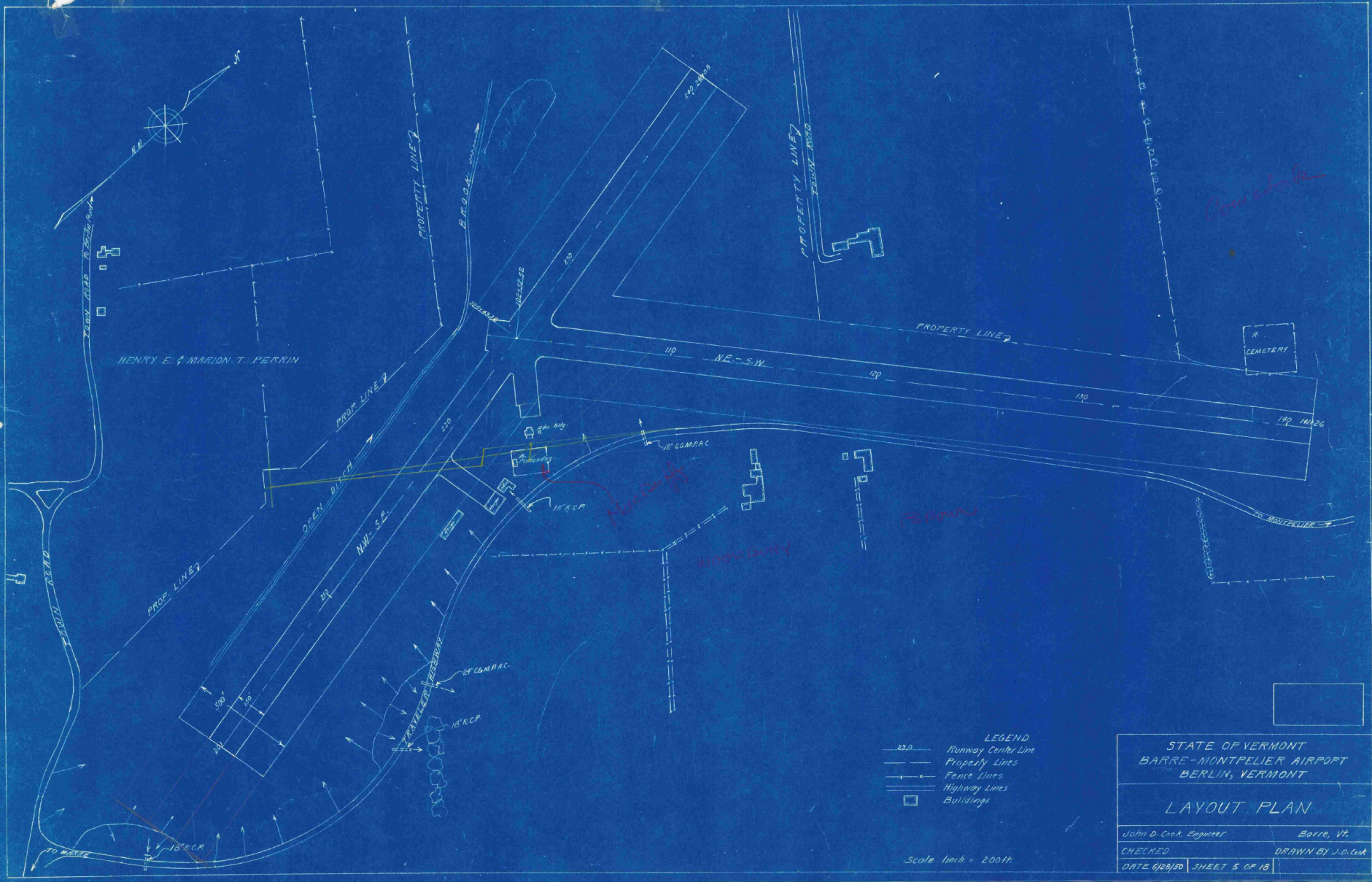
DETAILS OF DROP INLET

- LEGEND**
- Runway Center Line
  - Existing Contour Lines
  - - - Proposed Construction Contour Lines
  - - - Existing Drainage Lines
  - - - Proposed Main Drainage Lines
  - Buildings
  - ▨ Area to be scarified & compacted
  - - - Excavate, backfill & compact drain lines.
- Scale 1 inch = 100 ft.

STATE OF VERMONT  
 BARRE - MONTPELIER AIRPORT  
 BERLIN, VERMONT

**GRADING & DRAINAGE PLAN**

John D. Cook, Engineer. Barre, VT.  
 CHECKED: DATE 6/28/50 DRAWN BY: J.D. Cook  
 SHEET 4 OF 18



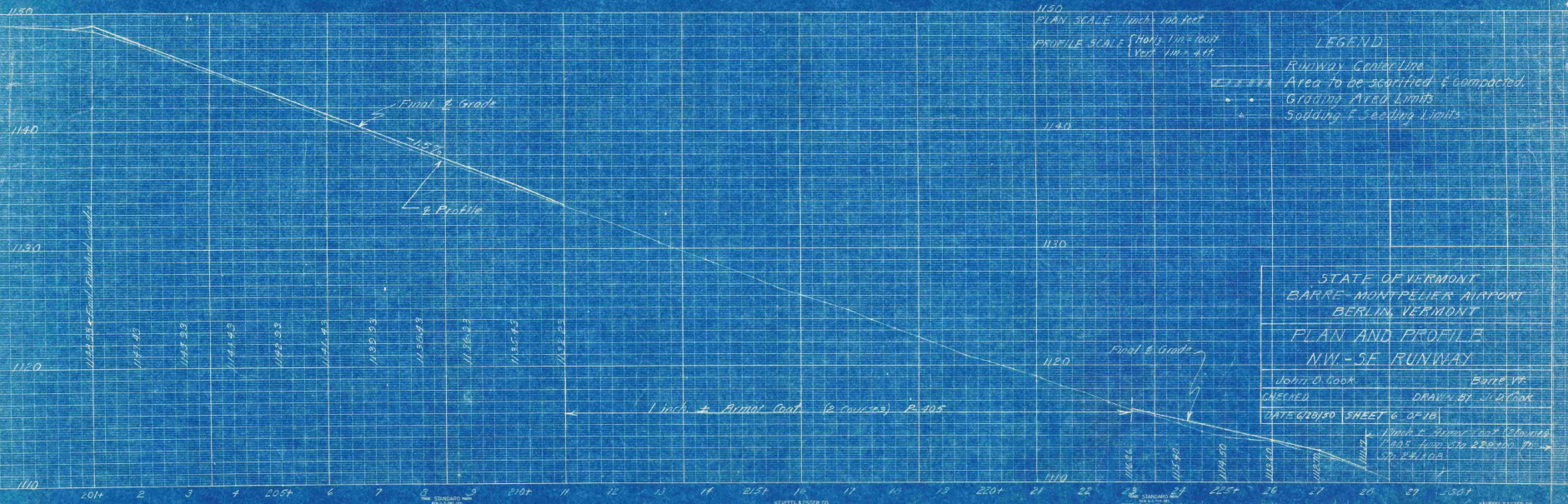
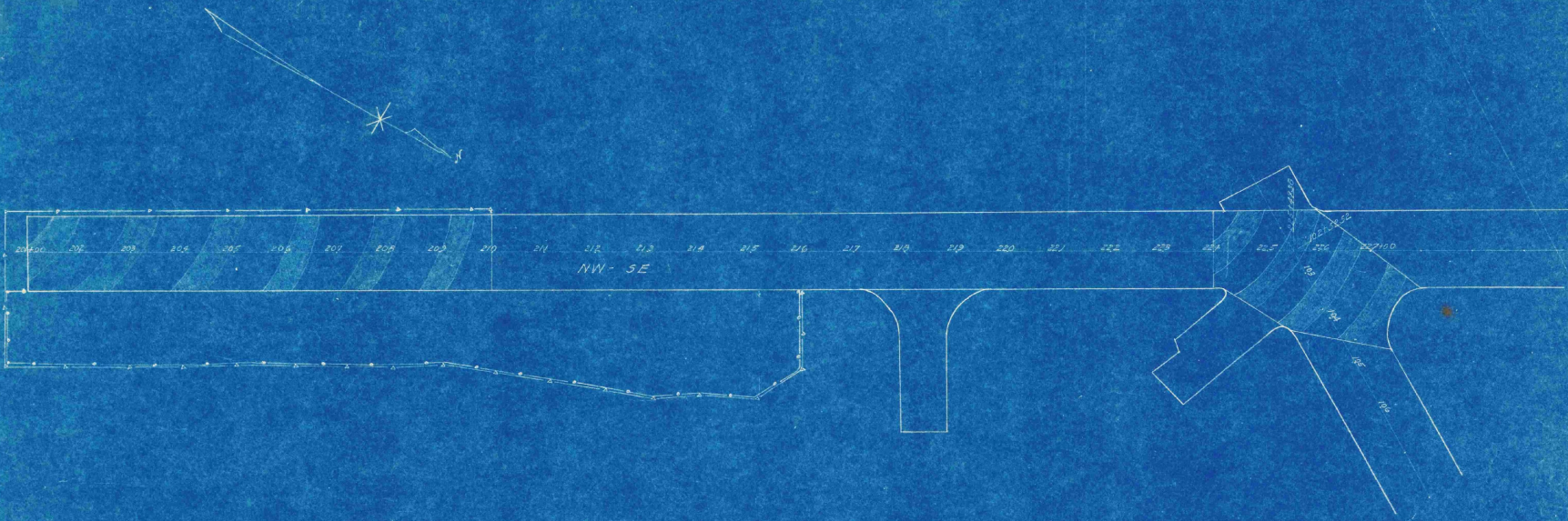
- LEGEND
- 23.0 — Runway Center Line
  - — Property Lines
  - — Fence Lines
  - — Highway Lines
  - Buildings

STATE OF VERMONT  
 BARRE-MONTPELIER AIRPORT  
 BERLIN, VERMONT

LAYOUT PLAN

John D. Cook, Engineer Barre, Vt.  
 CHECKED DRAWN BY J.D. Cook  
 DATE 6/28/50 SHEET 5 OF 18

Scale 1 inch = 200 ft.



1150  
PLAN SCALE 1 inch = 100 feet  
PROFILE SCALE (HORIZ.) 1 in = 100 ft  
(VERT.) 1 in = 4 ft

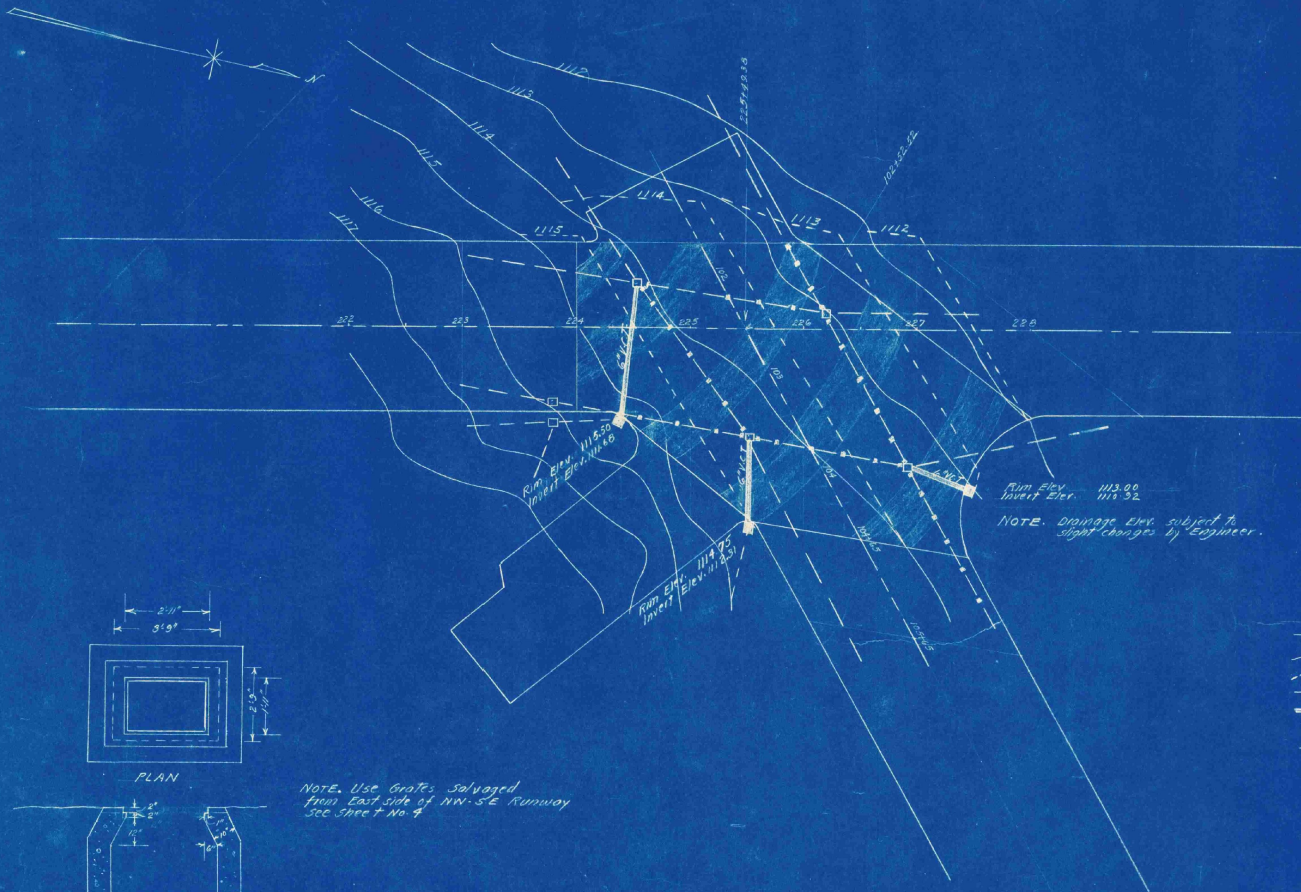
LEGEND  
 Runway Center Line  
 Area to be scarified & compacted  
 Grading Area Limits  
 Sodding & Seeding Limits

STATE OF VERMONT  
 BARRE-MONTPELIER AIRPORT  
 BERLIN, VERMONT  
 PLAN AND PROFILE  
 NW-SE RUNWAY

JOHN D. GOOK  
 CHECKED  
 DATE 6/20/50

BATTE YR  
 DRAWN BY J. D. GOOK  
 SHEET 6 OF 18

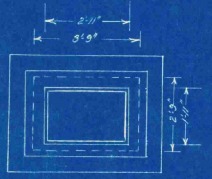
1 inch = 100 feet (PLAN)  
 1 inch = 4 feet (PROFILE)  
 1 inch = 100 feet (PLAN)  
 1 inch = 4 feet (PROFILE)



NOTE: Drainage Elev. subject to slight changes by Engineer.

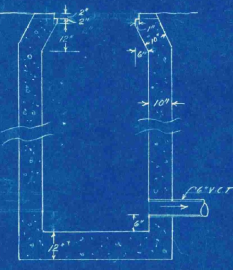
LEGEND

- Runway Center Line
- - - Existing Contours
- - - Proposed Construction Contours
- - - Existing Drainage Lines
- ▣ Proposed New Drainage & Catch basins
- ▨ Area to be scarified & compacted
- ▧ Excavate, backfill & compact drain lines, relay tile as directed by Engineer



PLAN

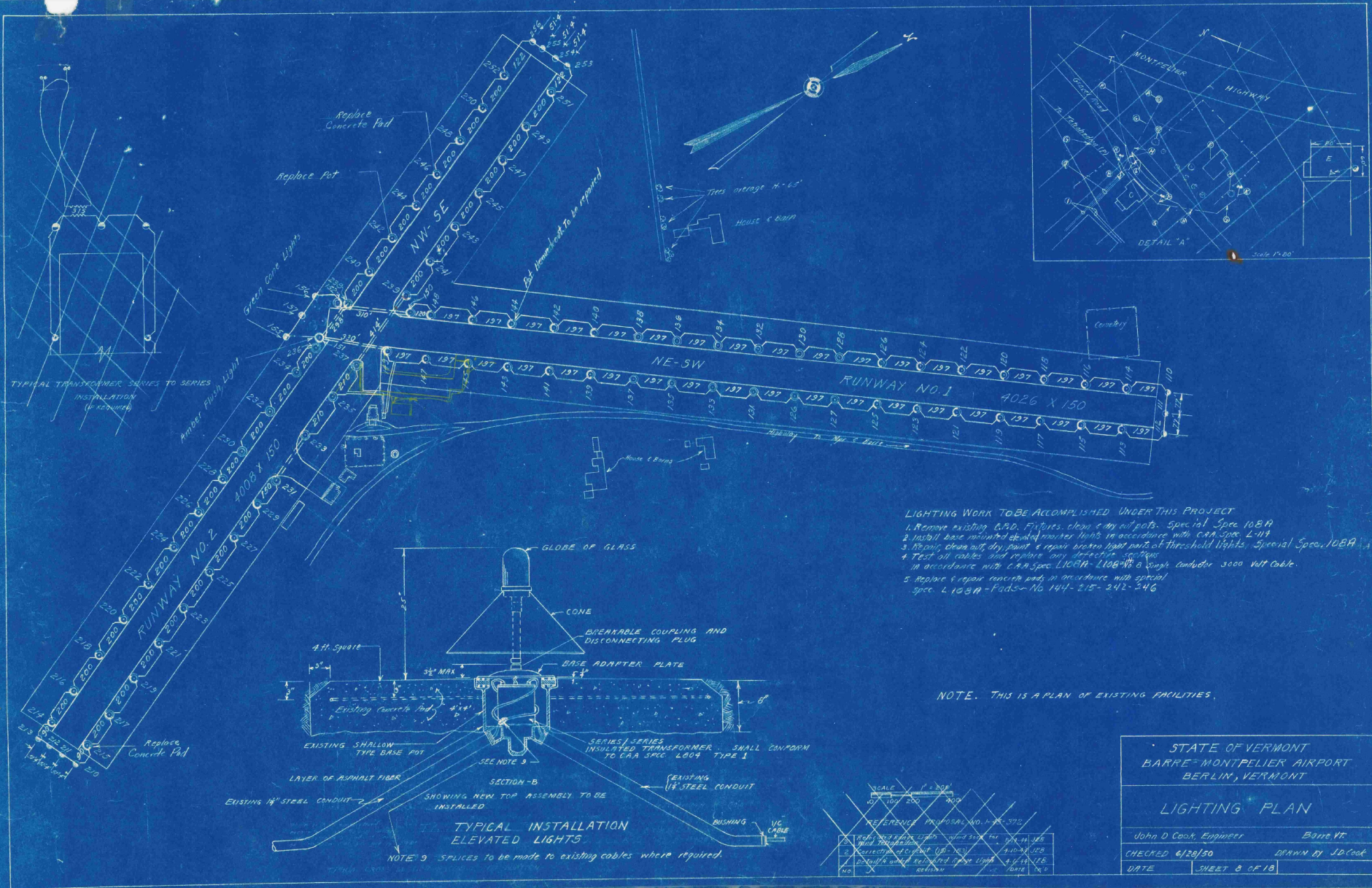
NOTE: Use Gates salvaged from East side of NW-SE Runway See Spec. No. 4



SECTION  
DETAILS OF CATCH BASIN

Scale 1/4" = 1' - 0"

STATE OF VERMONT	
BARRE - MONTPELIER AIRPORT	
BERLIN, VERMONT	
PLAN AT INTERSECTION	
John D. Cook, Engineer	Barre, Vt.
CHECKED	DRAWN BY J.D. Cook
DATE 6/26/50	SHEET 7 OF 18



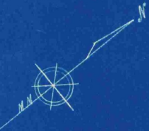
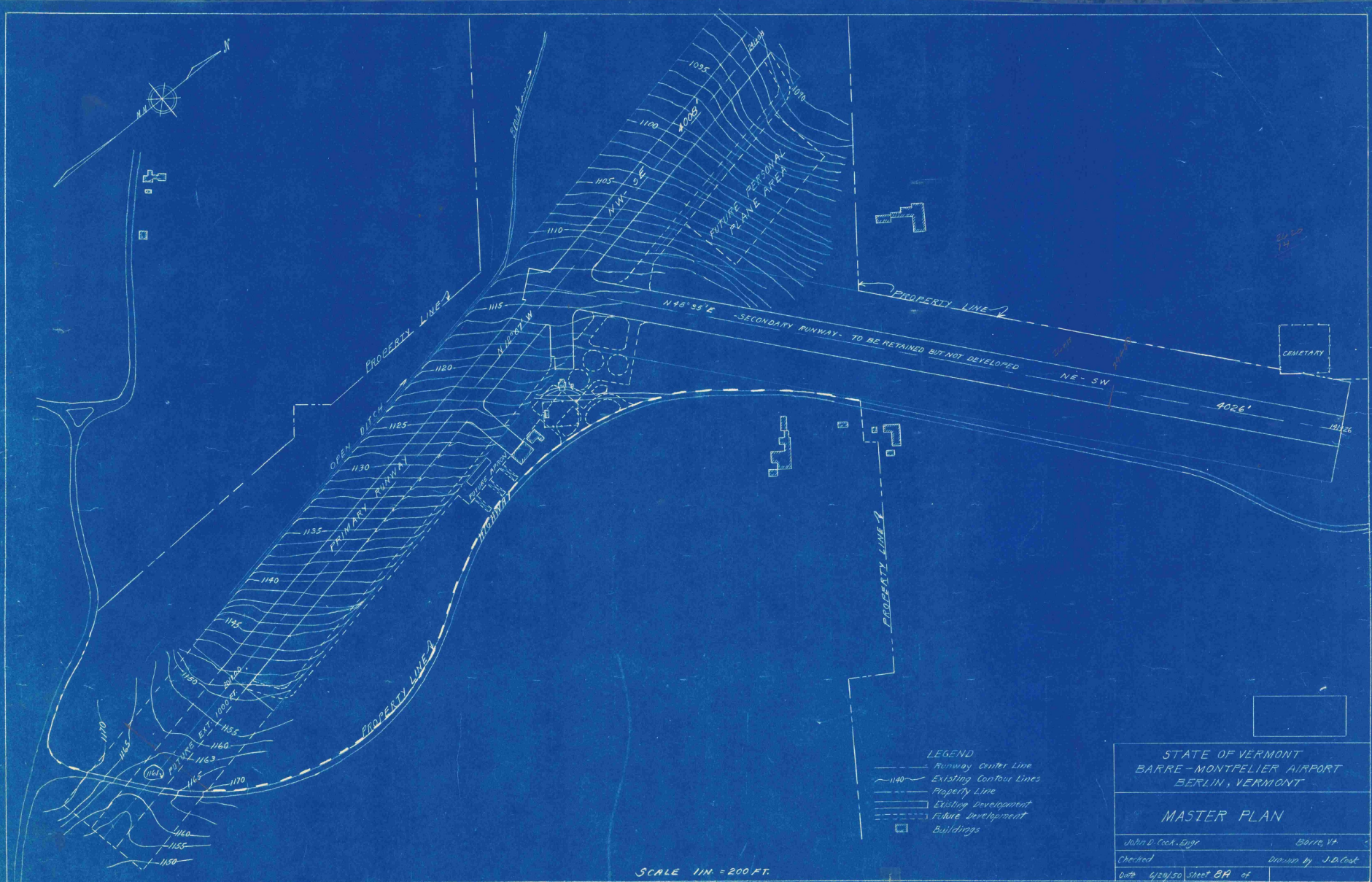
- LIGHTING WORK TO BE ACCOMPLISHED UNDER THIS PROJECT**
1. Remove existing G.P.O. Fixtures, clean & dry all pots. Special Spec 108R
  2. Install base mounted double marker lights in accordance with CAA Spec L-111
  3. Repair, clean out, dry, paint & repair broken light parts of threshold lights. Special Spec 108R
  4. Test all cables and replace any defective sections in accordance with CAA Spec 1108R-1108R-B 6/8 rough conductor 3000 volt cable.
  5. Replace & repair concrete pads in accordance with special spec. L 108R-Pads-No 144-215-242-246

NOTE. THIS IS A PLAN OF EXISTING FACILITIES.

STATE OF VERMONT BARRE-MONTPELIER AIRPORT BERLIN, VERMONT	
LIGHTING PLAN	
John D Cook, Engineer	Barre, VT.
CHECKED 6/28/50	DRAWN BY J.D. Cook
DATE	SHEET 3 OF 13

SCALE	1" = 200'
NO. 100	200'
NO. 200	400'
NO. 300	600'
NO. 400	800'
NO. 500	1000'
NO. 600	1200'
NO. 700	1400'
NO. 800	1600'
NO. 900	1800'
NO. 1000	2000'

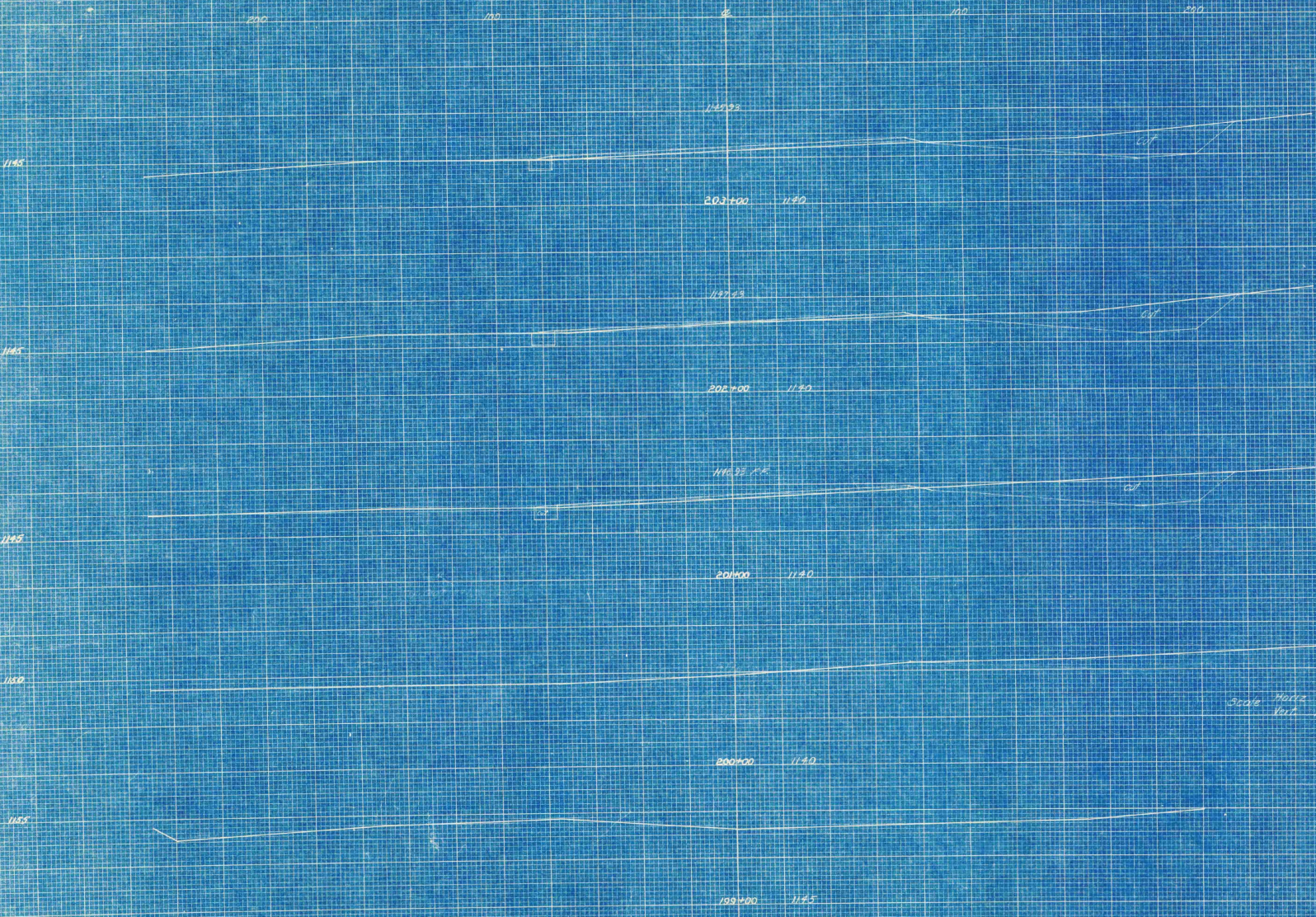
NOTE 9 SPICES TO BE MADE TO EXISTING CABLES WHERE REQUIRED.



SCALE 1" = 200 FT.

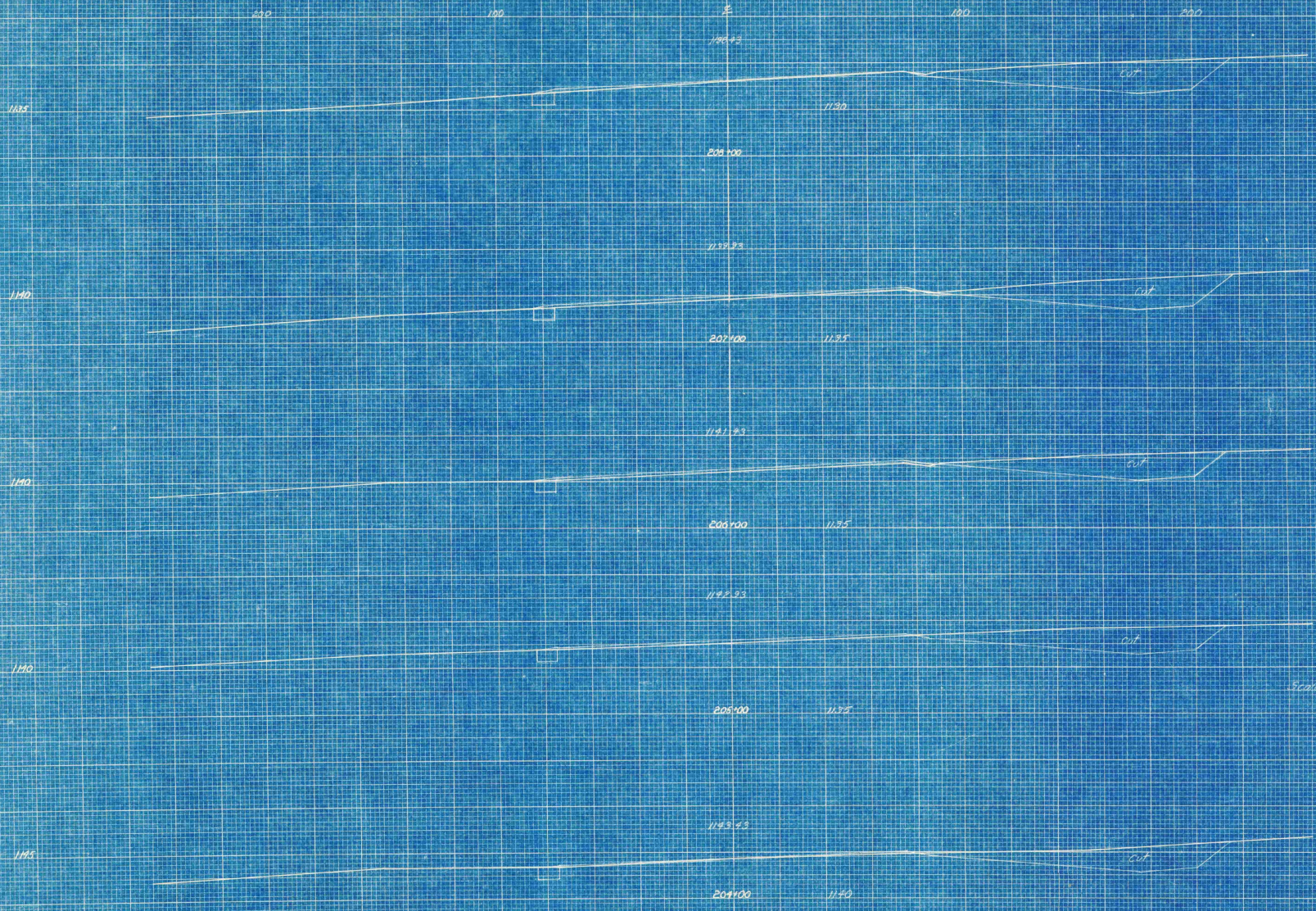
- LEGEND
- Runway Center Line
  - ~ Existing Contour Lines
  - - - Property Line
  - ▭ Existing Development
  - ▭ Future Development
  - Buildings

STATE OF VERMONT BARRE-MONTPELIER AIRPORT BERLIN, VERMONT	
MASTER PLAN	
John D. Cook - Engr.	Barre, Vt.
Checked	Drawn by J.D. Cook
Date 6/28/50	Sheet 8A of

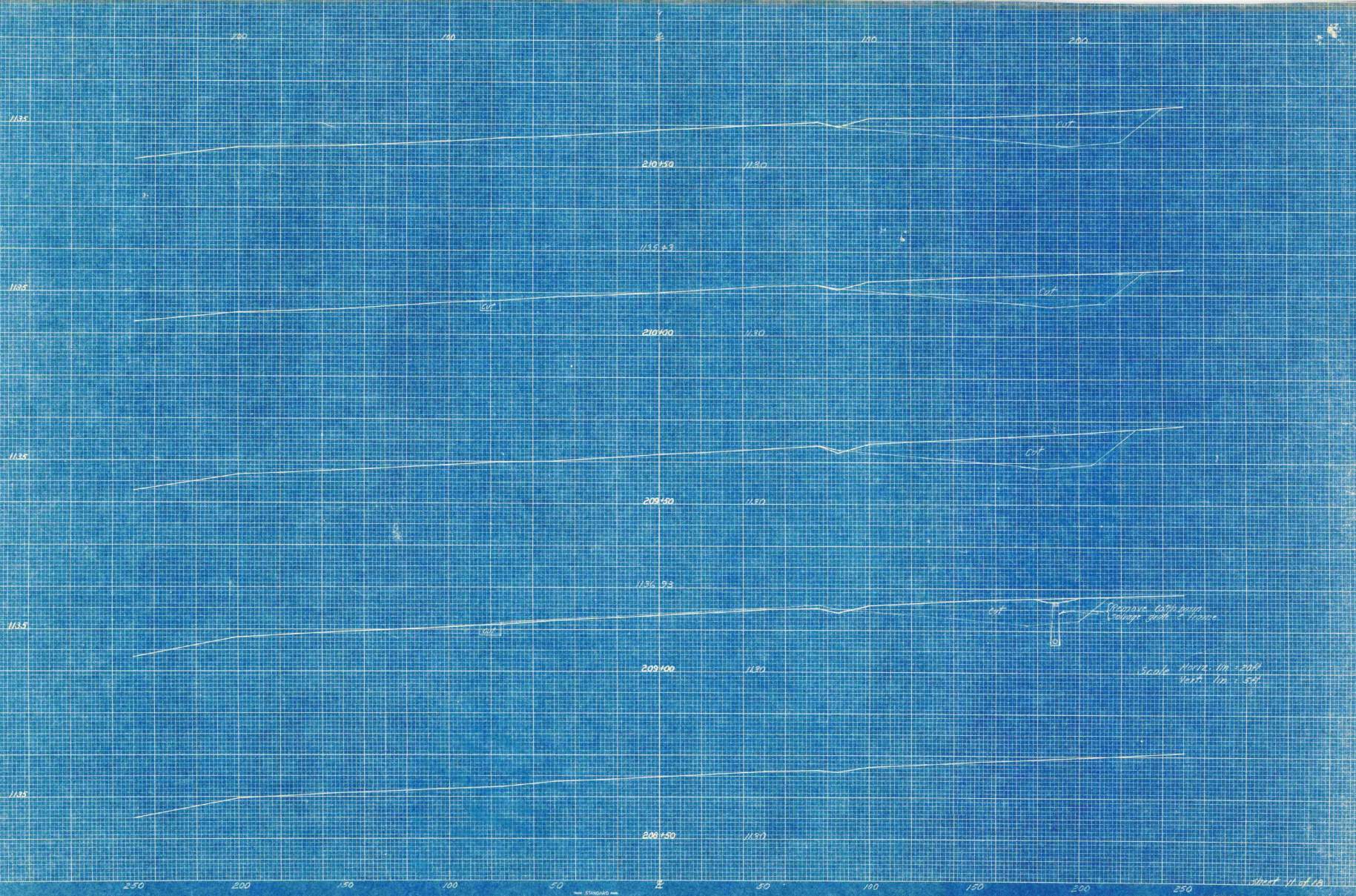


Scale Horiz. 1" = 20' ft  
 Vert. 1" = 5' ft.

Sheet 2 of 18

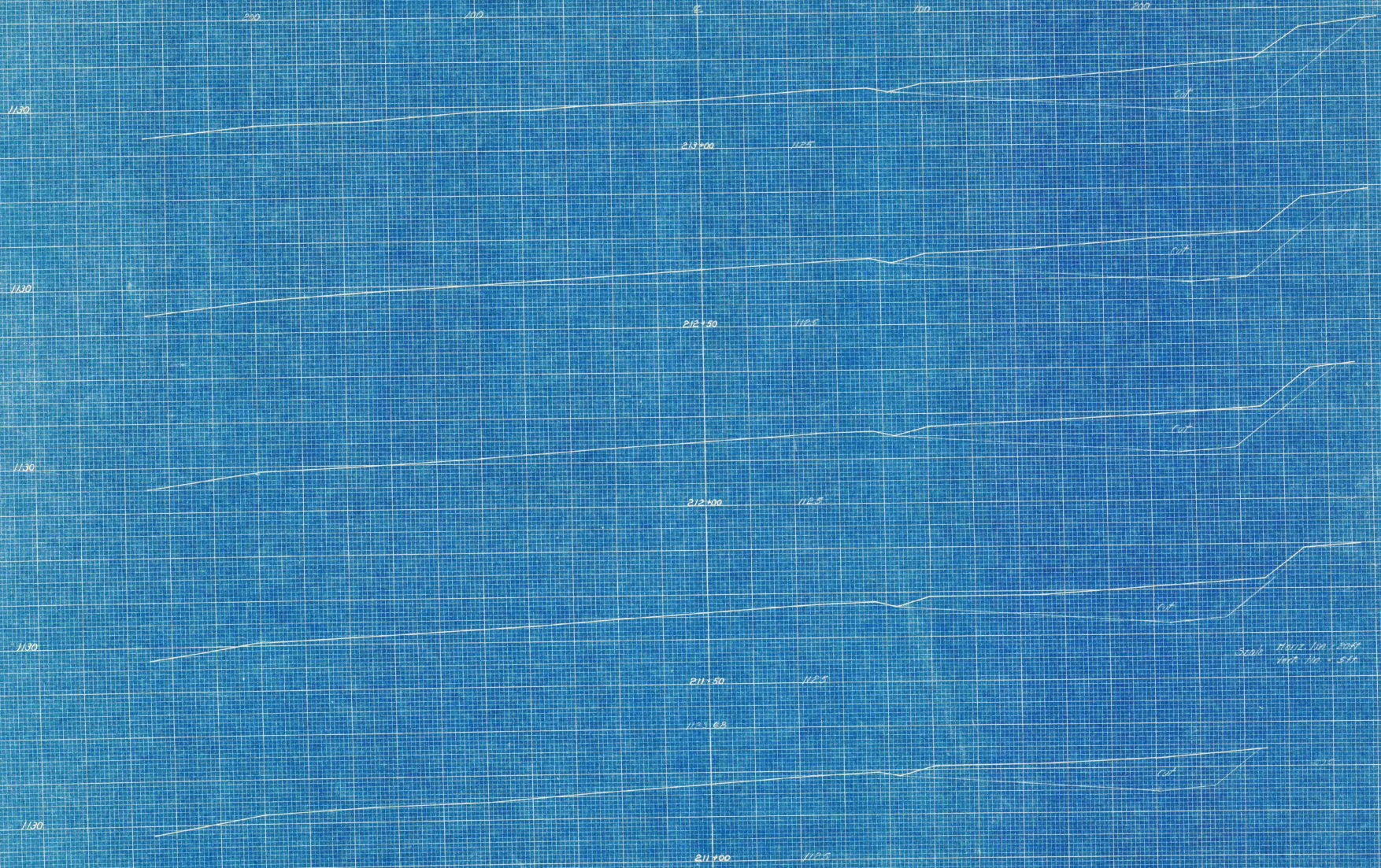


Scale Horiz. 1 in. = 200 ft  
 Vert. 1 in. = 5 ft

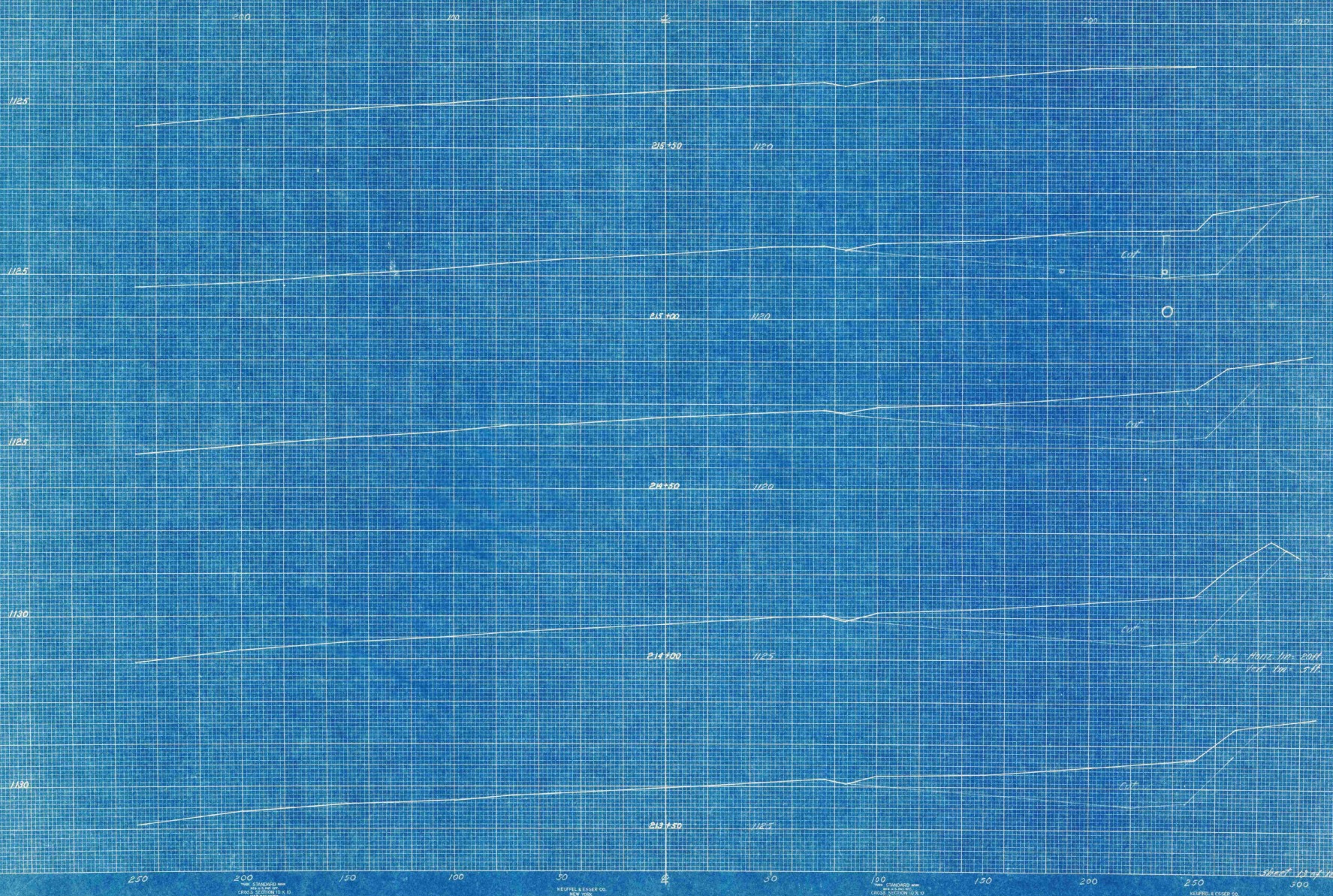


Proposed latrine vault,  
4' x 6' x 8'

Scale Horiz. 1" = 20'  
Vert. 1" = 5'

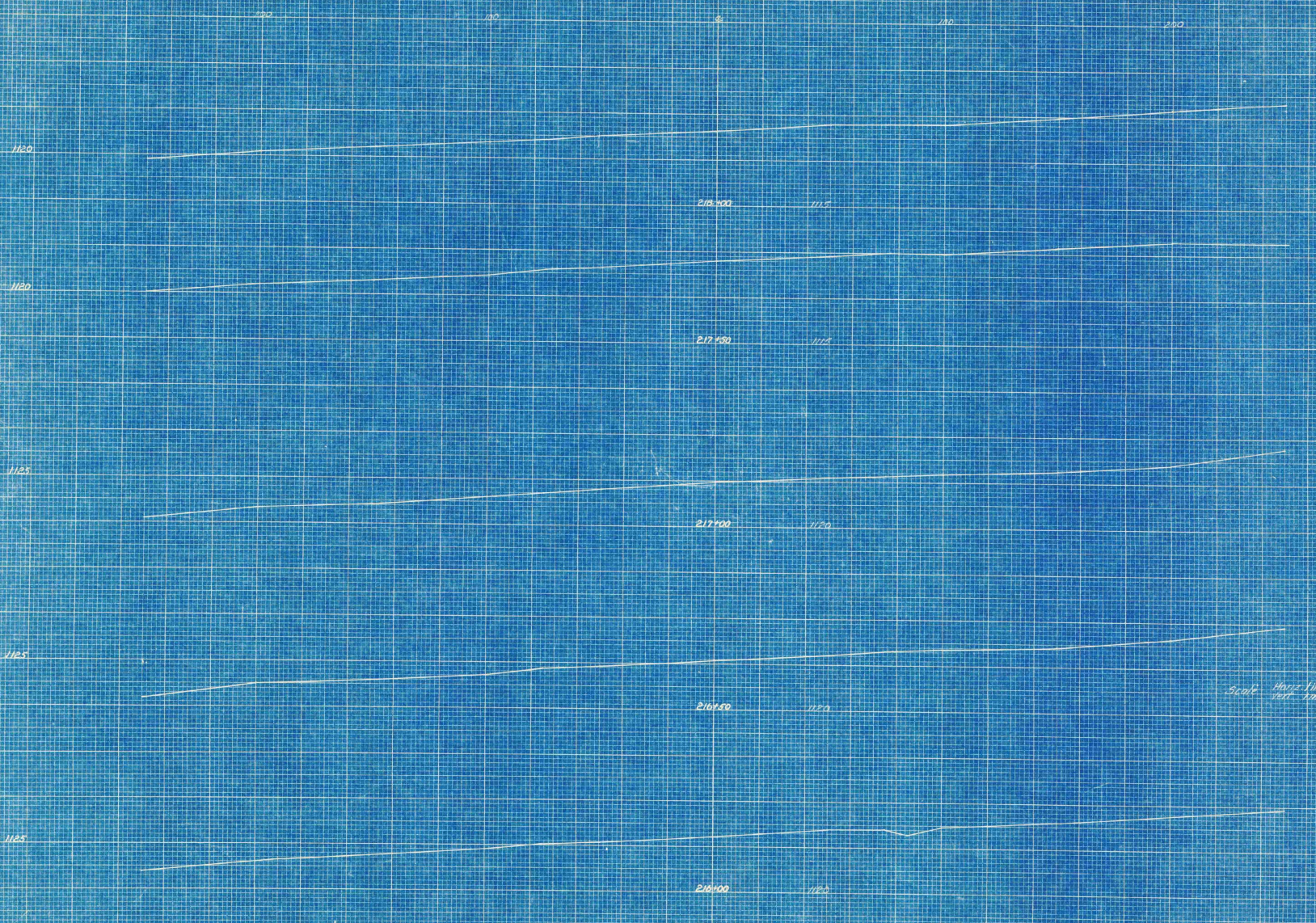


Scale  
 Horiz. 100' = 50ft  
 Vert. 100' = 5.5ft



5-20-11 11:12 AM - 2011  
11:17 AM - 5:11 PM

Sheet 63 of 119



Scale Horiz 1/100 Vert 1/100

Sheet 18 of 13

250 200 150 100 50 0 50 100 150 200 250

1120

220450 1115

1120

220100 1115

1120

219650 1115

1120

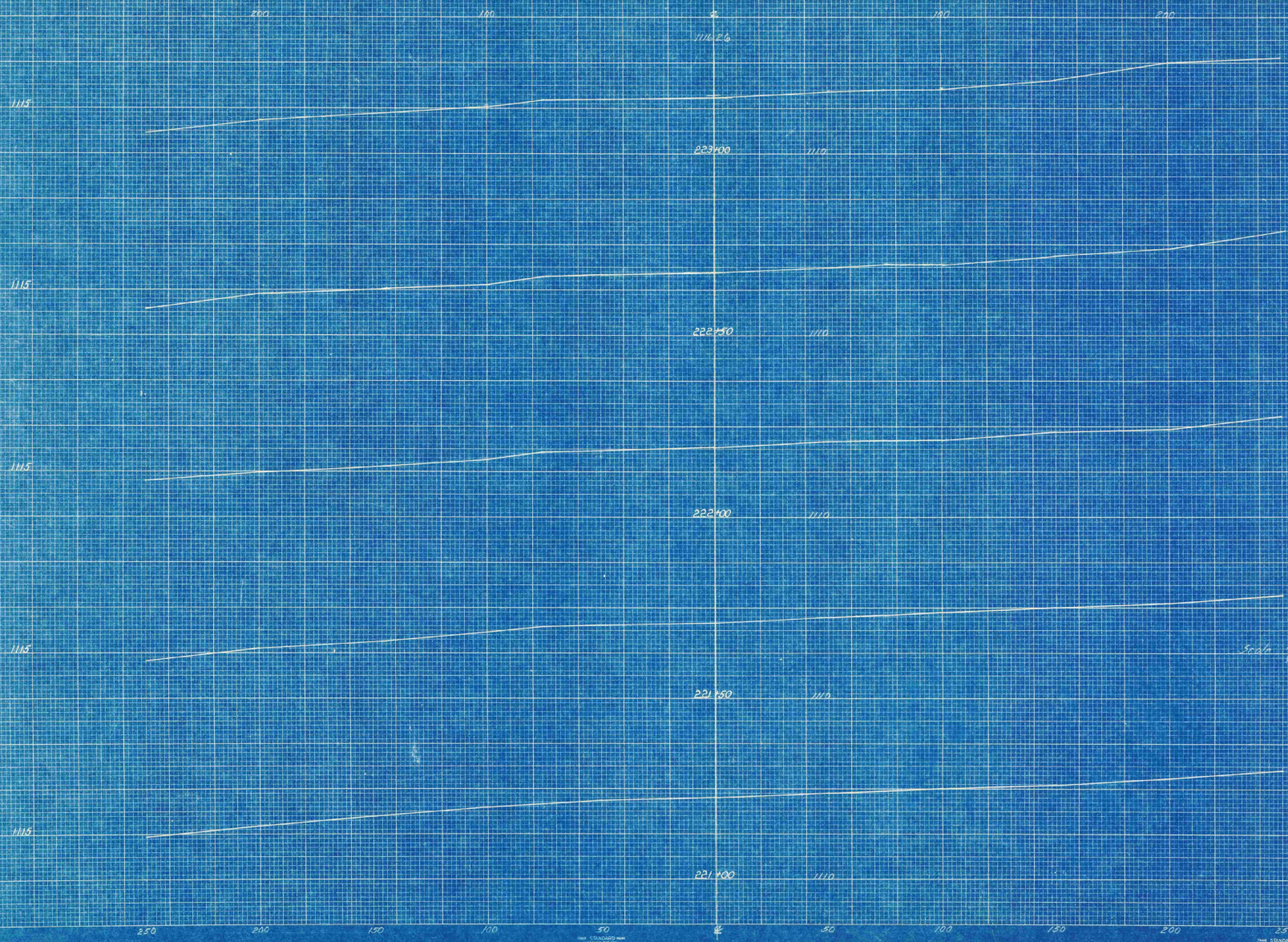
219300 1115

1120

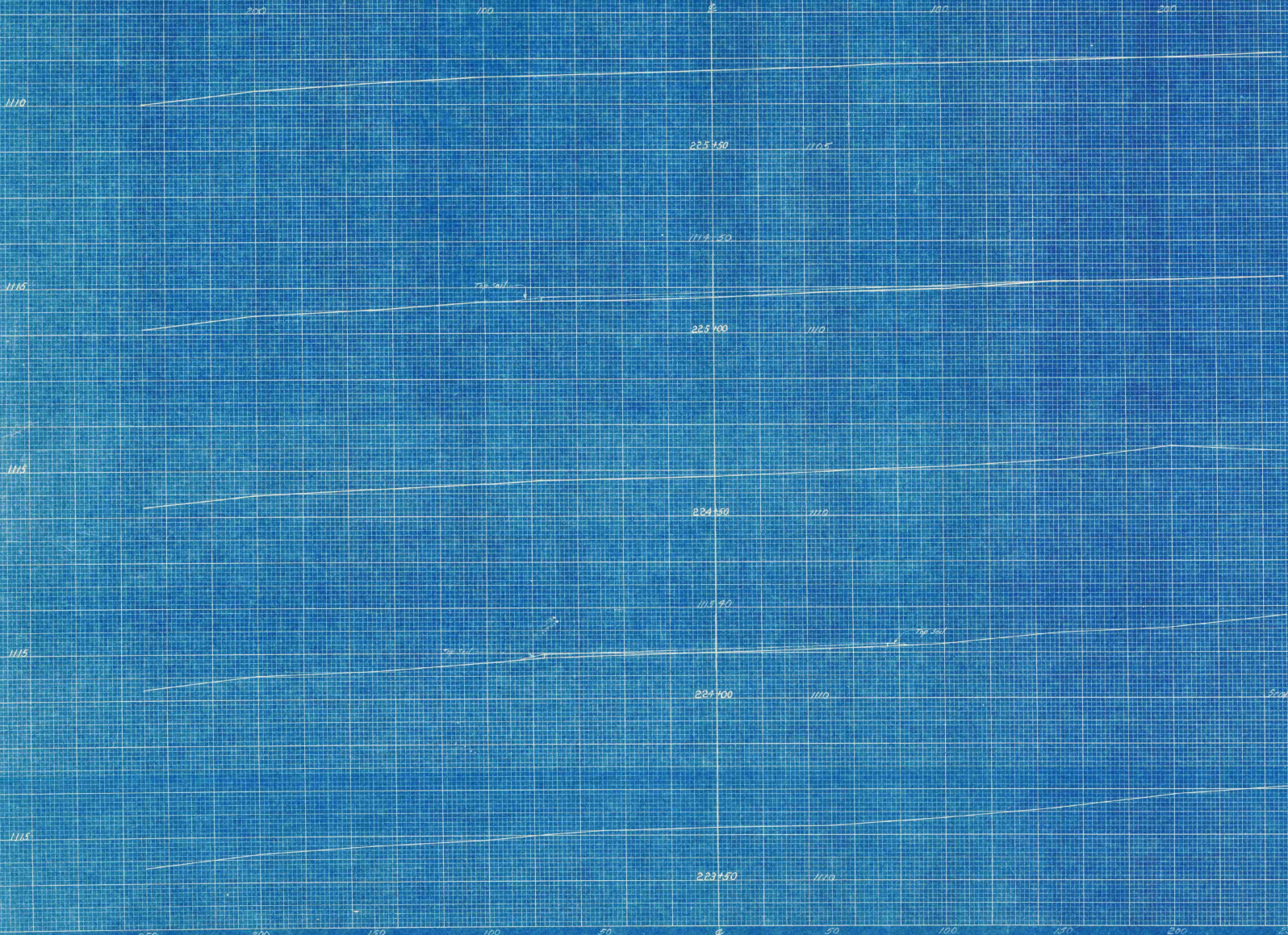
218850 1115

30000 MORGAN 100 - 20 11  
1000 100 - 5 11

Street 1/2 mile



Scale Horiz 1" = 20 ft  
 Vert 1" = 5 ft



S. of Horiz. 100' 20' ft  
 Vert. 100' 5' ft

