

SAVAGE ISLAND
 T. RIVIER (CROSS)
 VERMONT AERO BD
 & Cummings P.E. #1566



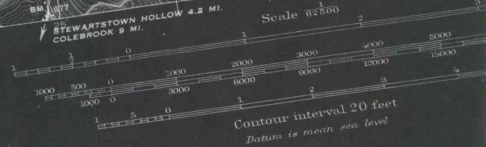
Topography by D.H. Watson, S.E. Clement and F.R. Swearingen
 Surveyed in 1925

ROAD CLASSIFICATION

Heavy-duty ——— 4 LANE 16 LANE Light-duty ———
 Medium-duty ——— 4 LANE 16 LANE Unimproved dirt ———

U.S. Route State Route

APPROXIMATE MEAN ELEVATION, 1925

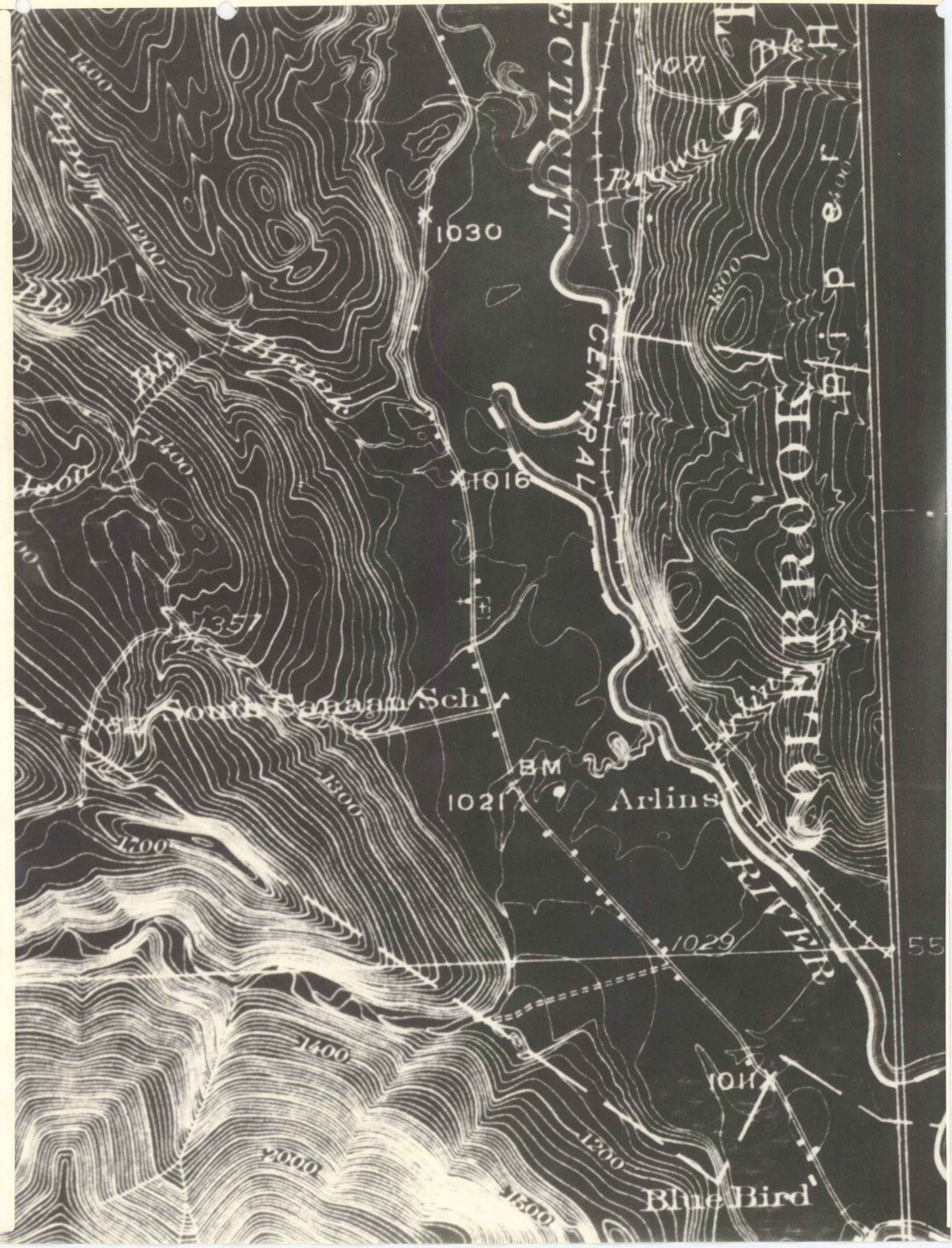


FOR SALE BY U. S. GEOLOGICAL SURVEY, WASHINGTON 25, D. C.
 A FOLDER DESCRIBING TOPOGRAPHIC MAPS AND SYMBOLS IS AVAILABLE ON

1" = 62500' 130%

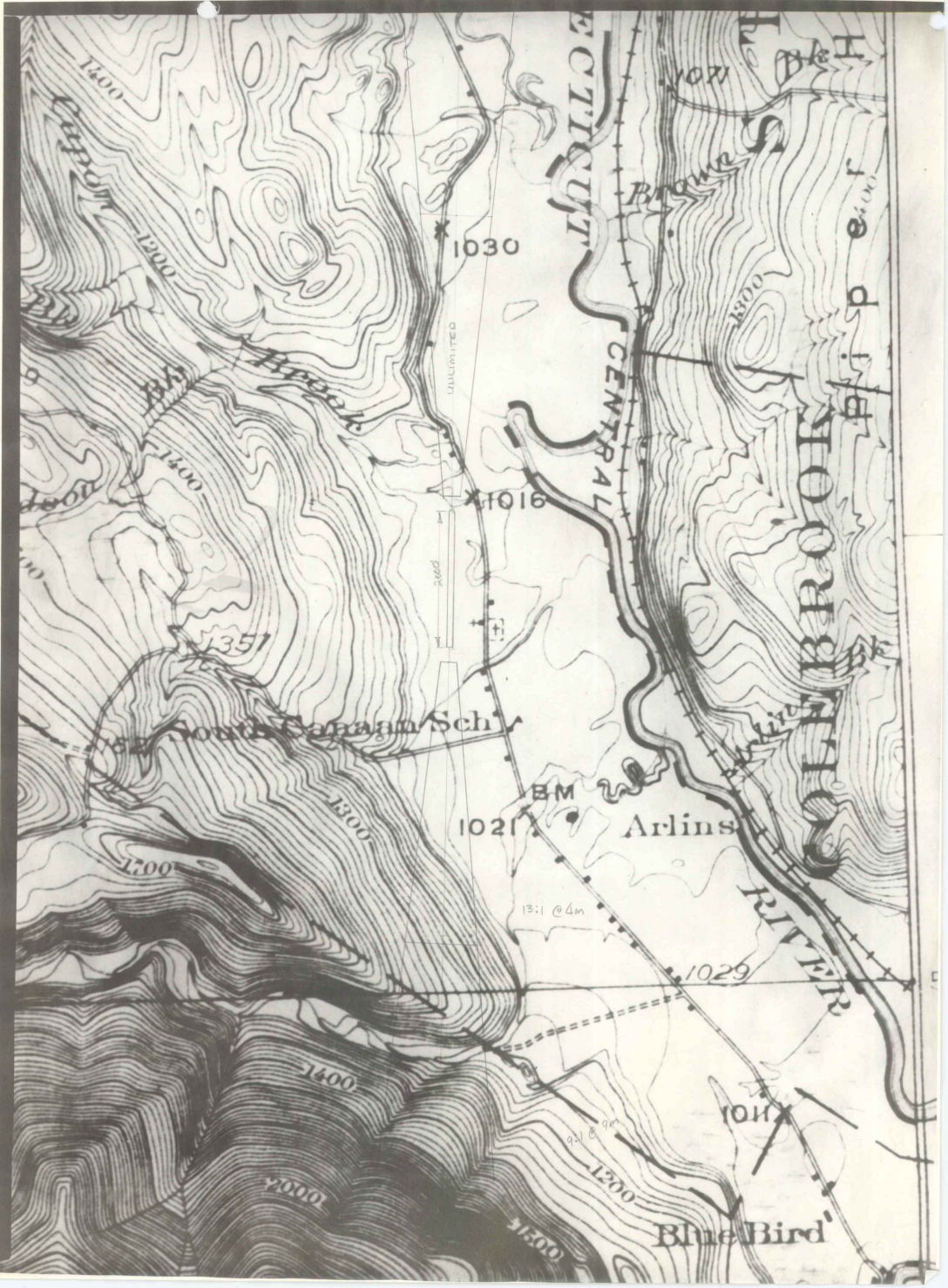


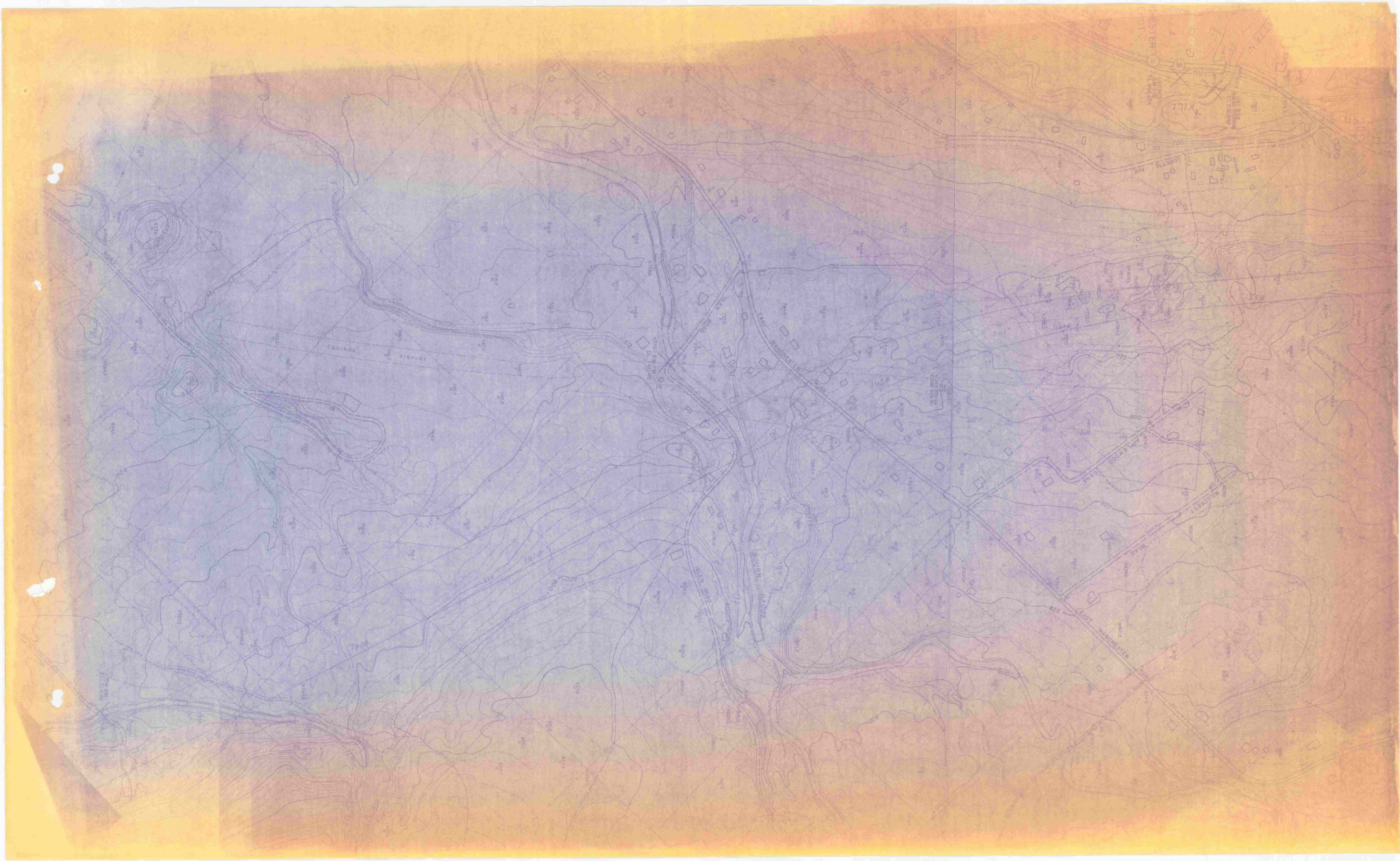
1" = 1000' 500 %

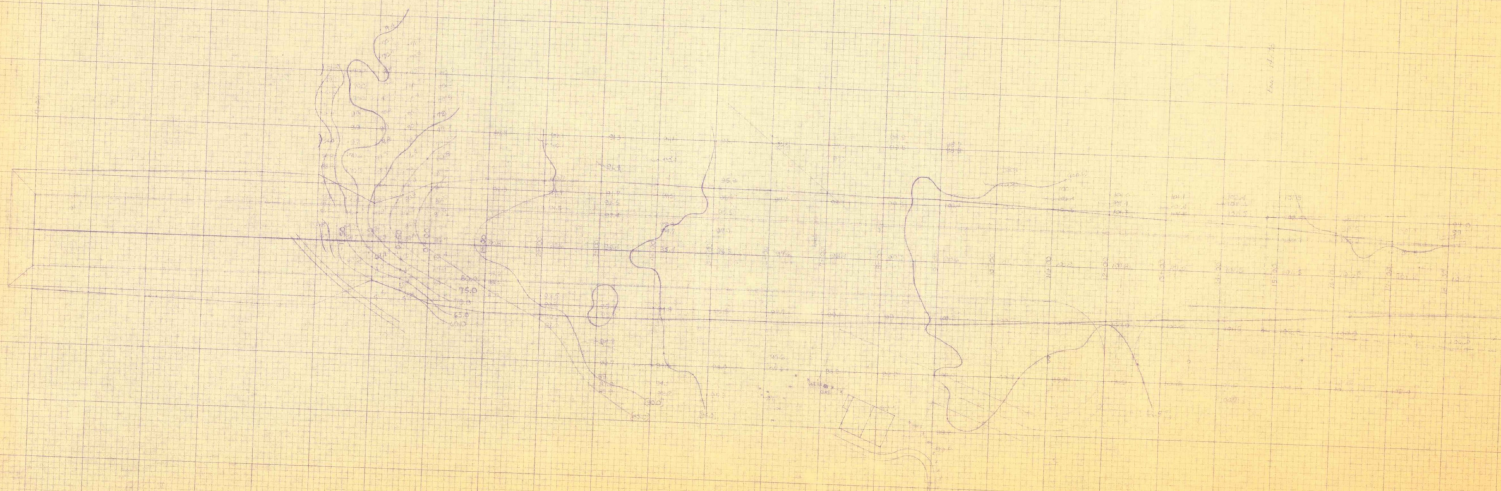


CANAAN

1" = 1000'
Scale







W.C. STANBROOK & CO. ENGINEERS
100, QUEEN STREET, MELB.

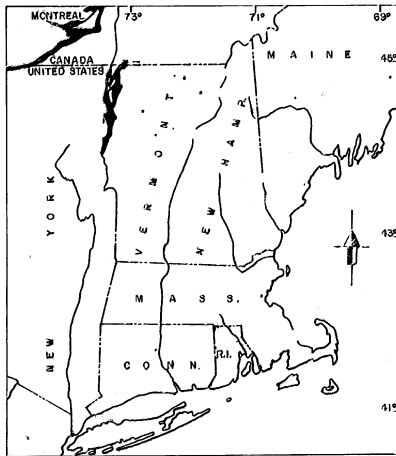
EAST

W.C. STANBROOK & CO.
100, QUEEN STREET, MELB.

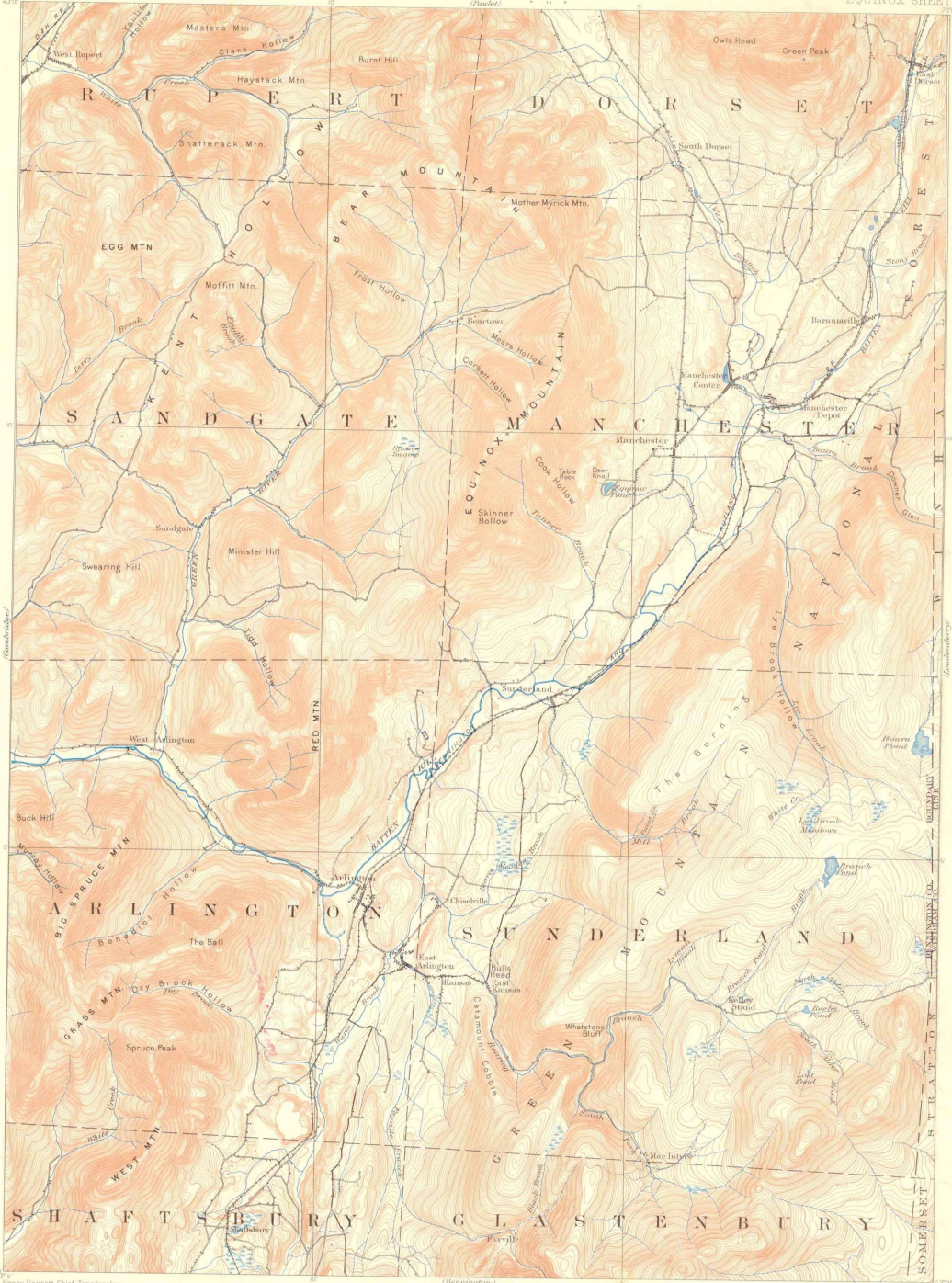
W.C. STANBROOK & CO. ENGINEERS
100, QUEEN STREET, MELB.

W.C. STANBROOK & CO.
100, QUEEN STREET, MELB.

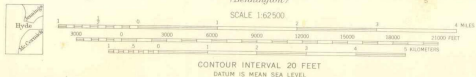
MANCHESTER AIRPORT *PLANS*



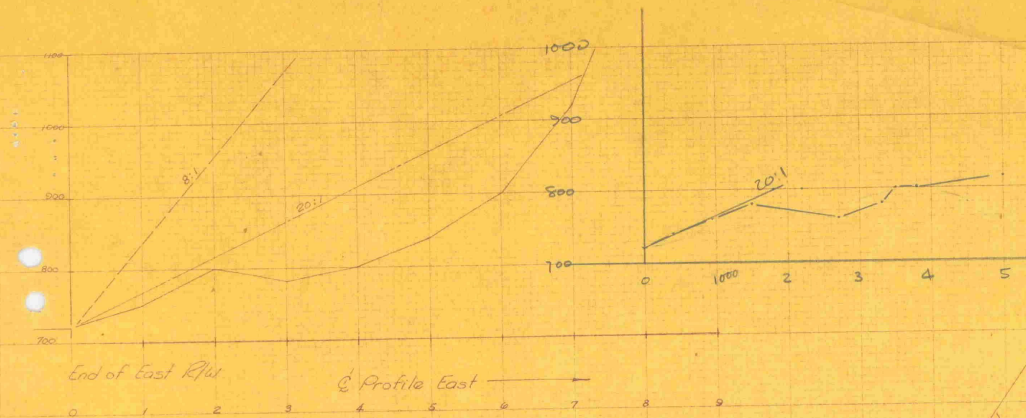
H-2



Henry Gannett, Chief Topographer
H.M. Wilson, Chief Geographer in charge
Triangulation by U.S. Coast and Geodetic Survey and G.T. Hawkins
Topography by J.H. Jennings, G.E. Hyde and Jas. McCombs
Surveyed in 1894.



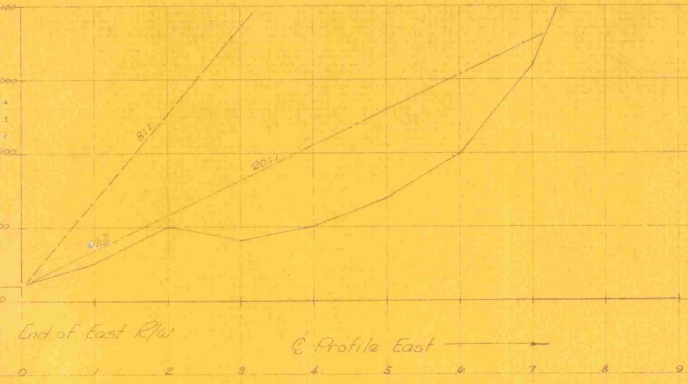
Edition of Nov. 1900, reprinted 1946
Polyconic projection
Surveyed by reconnaissance methods
V.T. EQUINOX
No. 3500-W7307-5



2450
2250

450	740
950	740
1500	780
1800	800
2200	800
2700	780
3300	780
3500	800
3800	800
5000	815





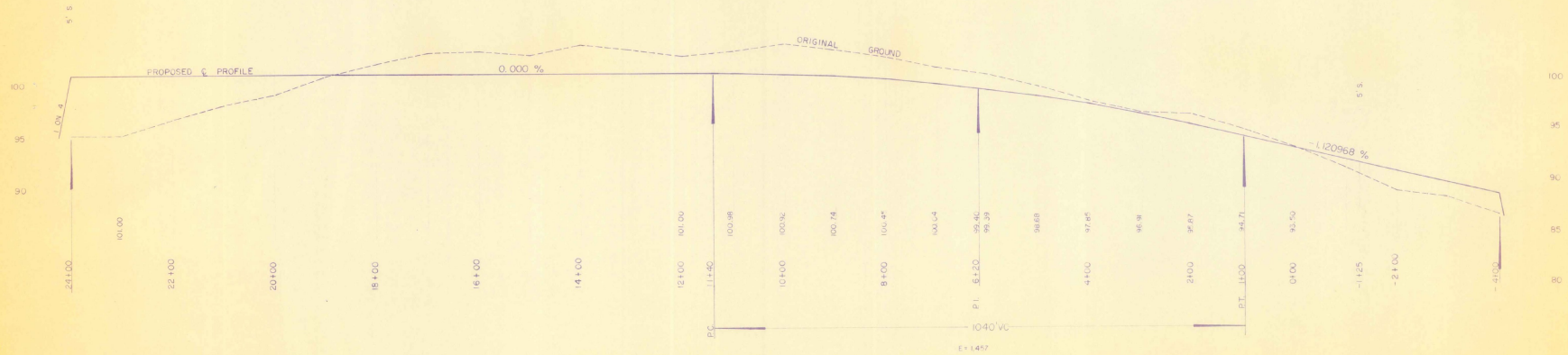
Barre Kill River
 123
 to Manchester
 Outlets
 boundary of

A.P. rd. pt. -
 turf 800 x 1800
 300 x 1400
 15' high
 elev. 710'

Barn Brook
 Clear Zone
 Clear Zone
 Clear Zone

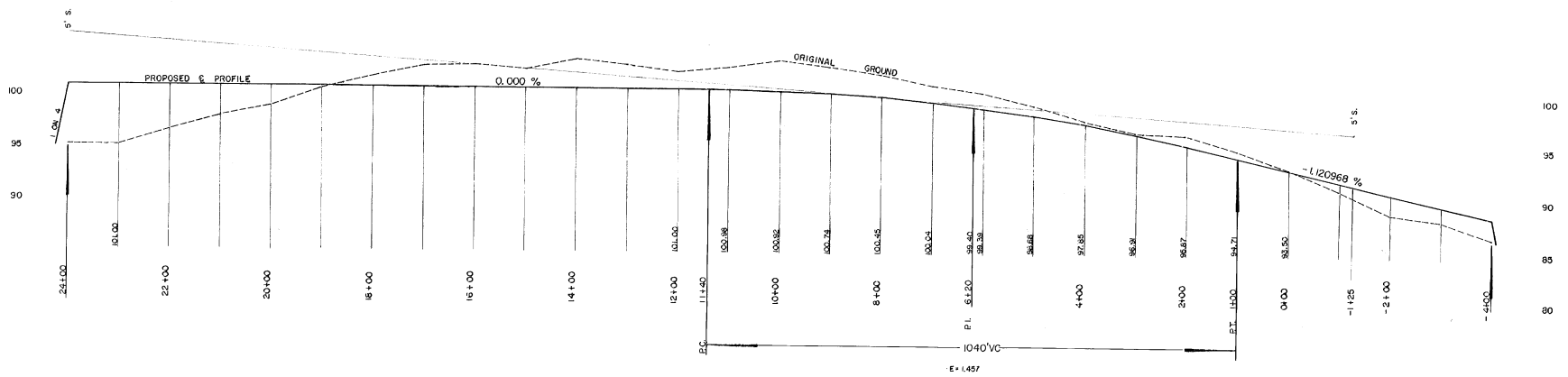
EQUINOX AIRPORT
 MANCHESTER
 12 June 1958
 Vermont Flora Commission
 54 3 37 0 500' 1000' 1500'





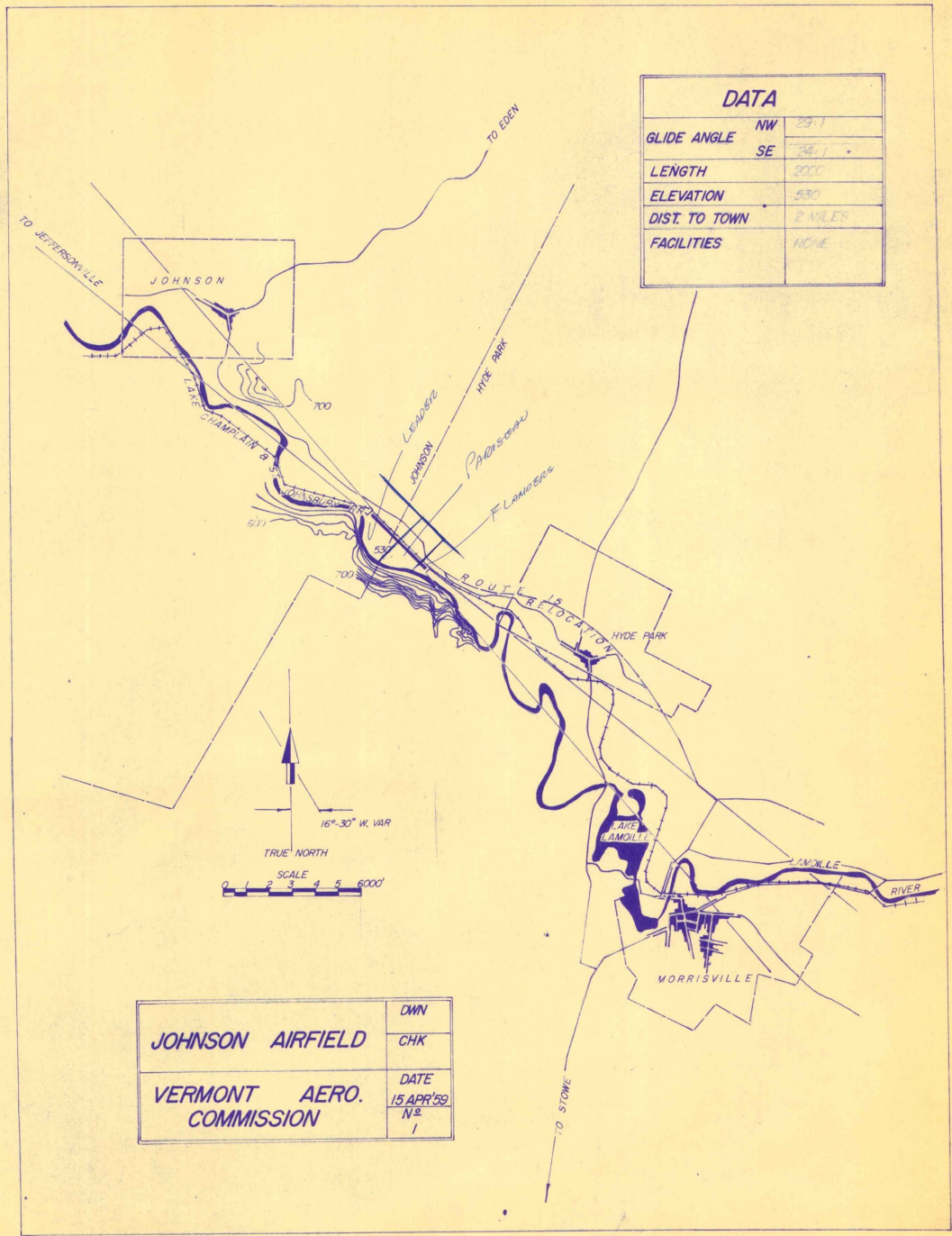
SCALE: 1" = 100' HOR
 1/8" = 5' VERT

SAVAGE ISLAND
 THEODORE RIEHLE
 (OWNER)
 VERMONT 4840 BUREAU
 3 CAMPBELL, RE # 1961 10-64

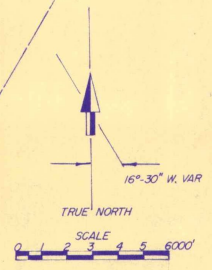


SCALE: 1" = 100' HOR.
1" = 5' VERT.

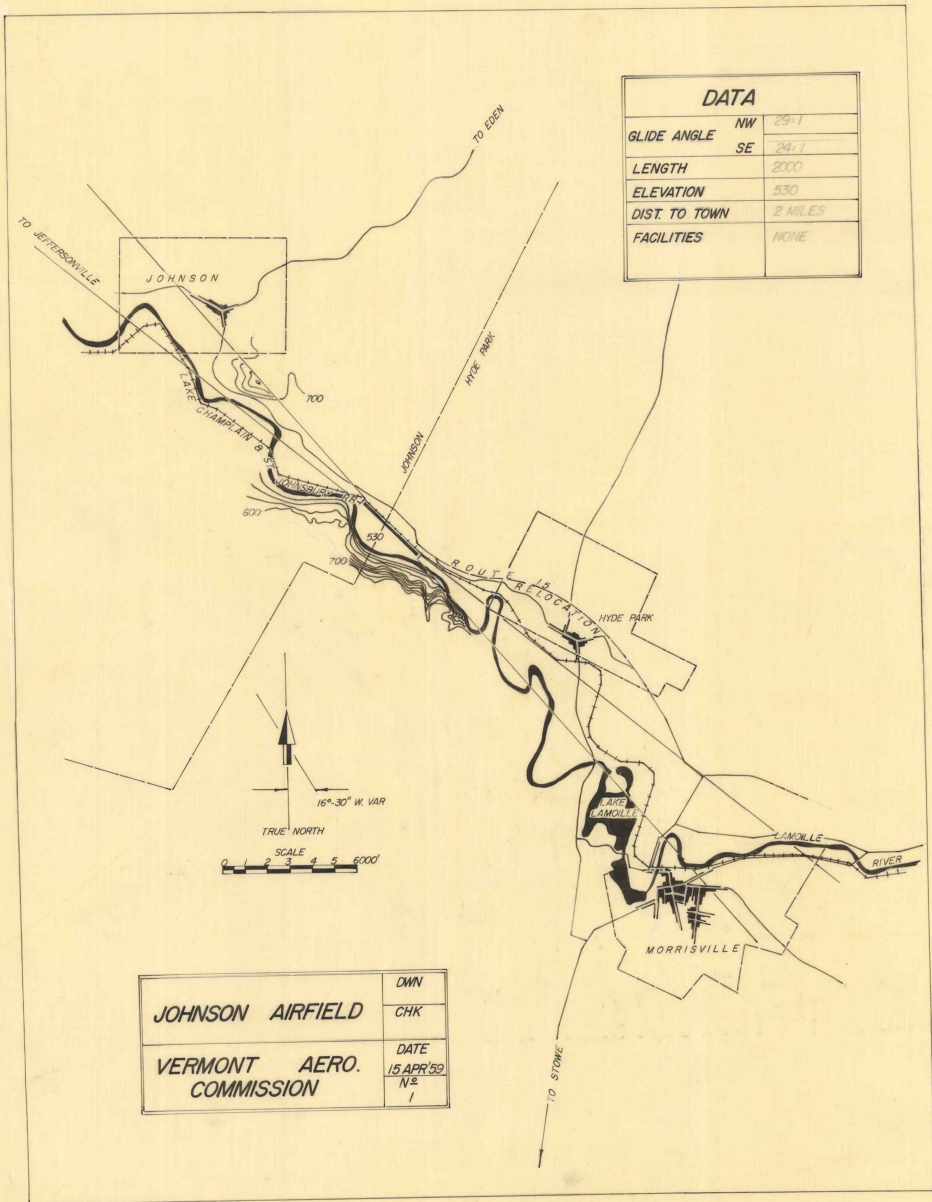
SAVAGE ISLAND
 THEODORE RIEHLE
 (OWNER)
 VERMONT AERO. BOARD
 D. CUMMINGS, P.E. #1564 10-64

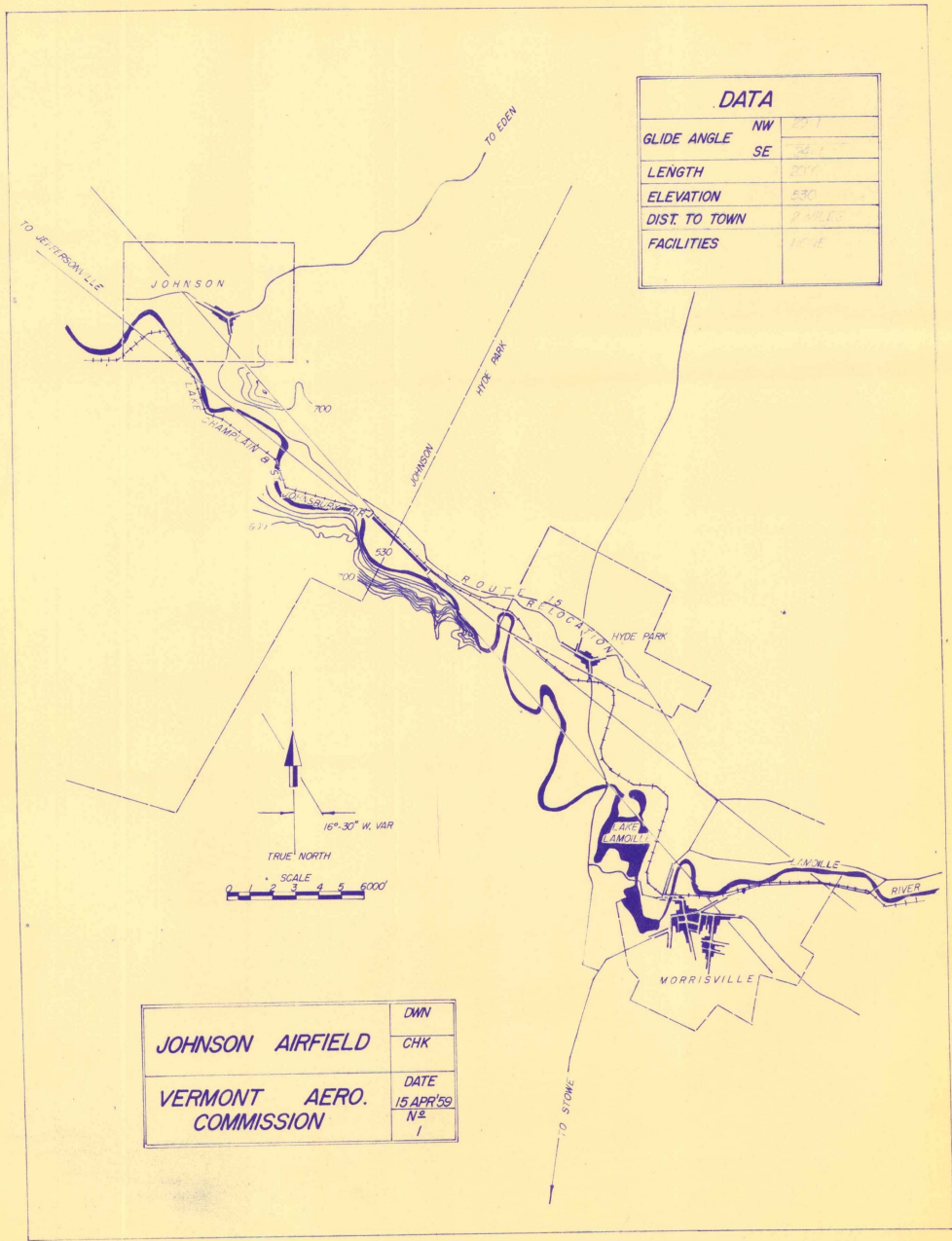


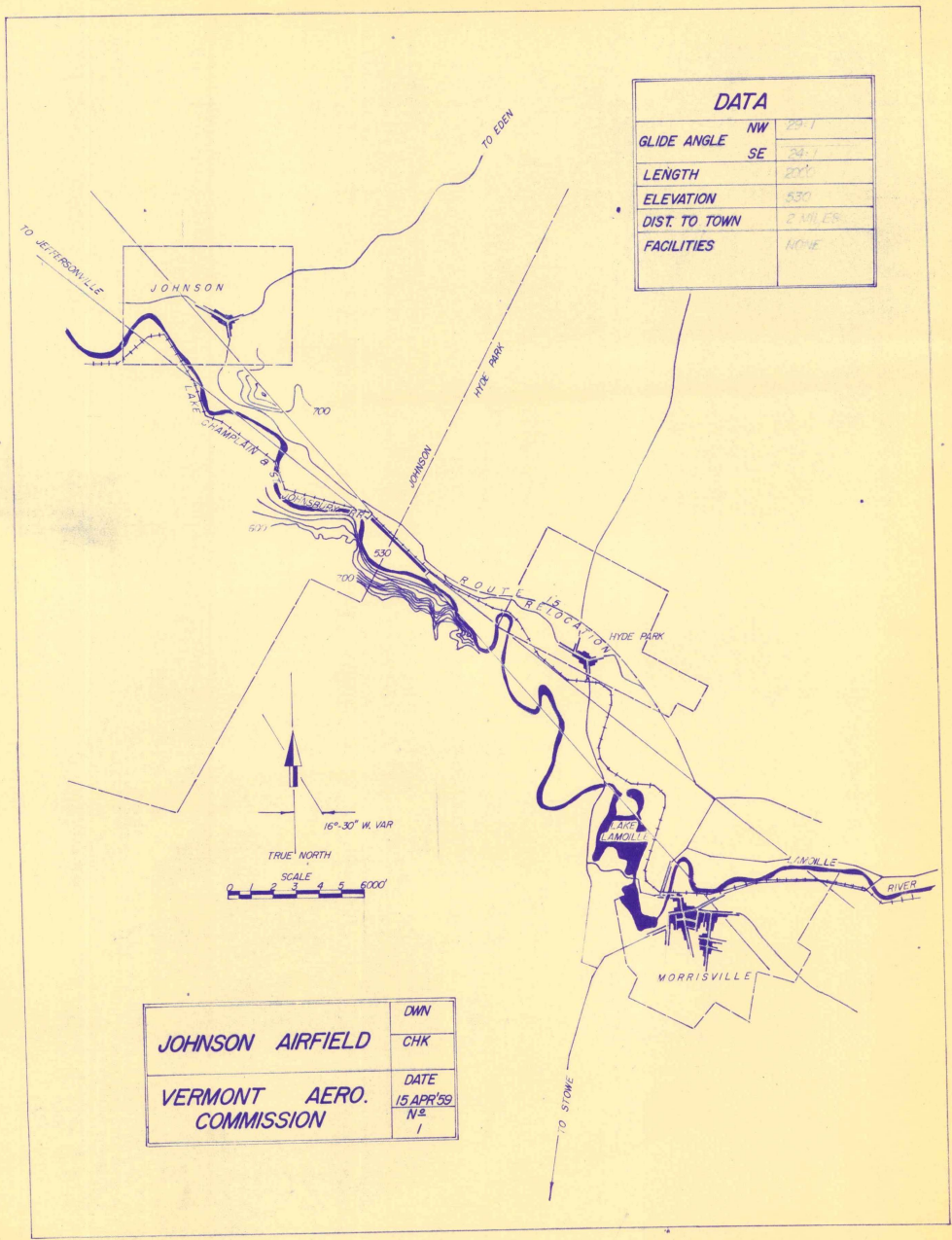
DATA	
GLIDE ANGLE	NW 29.1
	SE 29.1
LENGTH	2000
ELEVATION	530
DIST TO TOWN	2 MILES
FACILITIES	HOME



JOHNSON AIRFIELD	DWN
	CHK
VERMONT AERO. COMMISSION	DATE
	15 APR 59
	N ²
	1

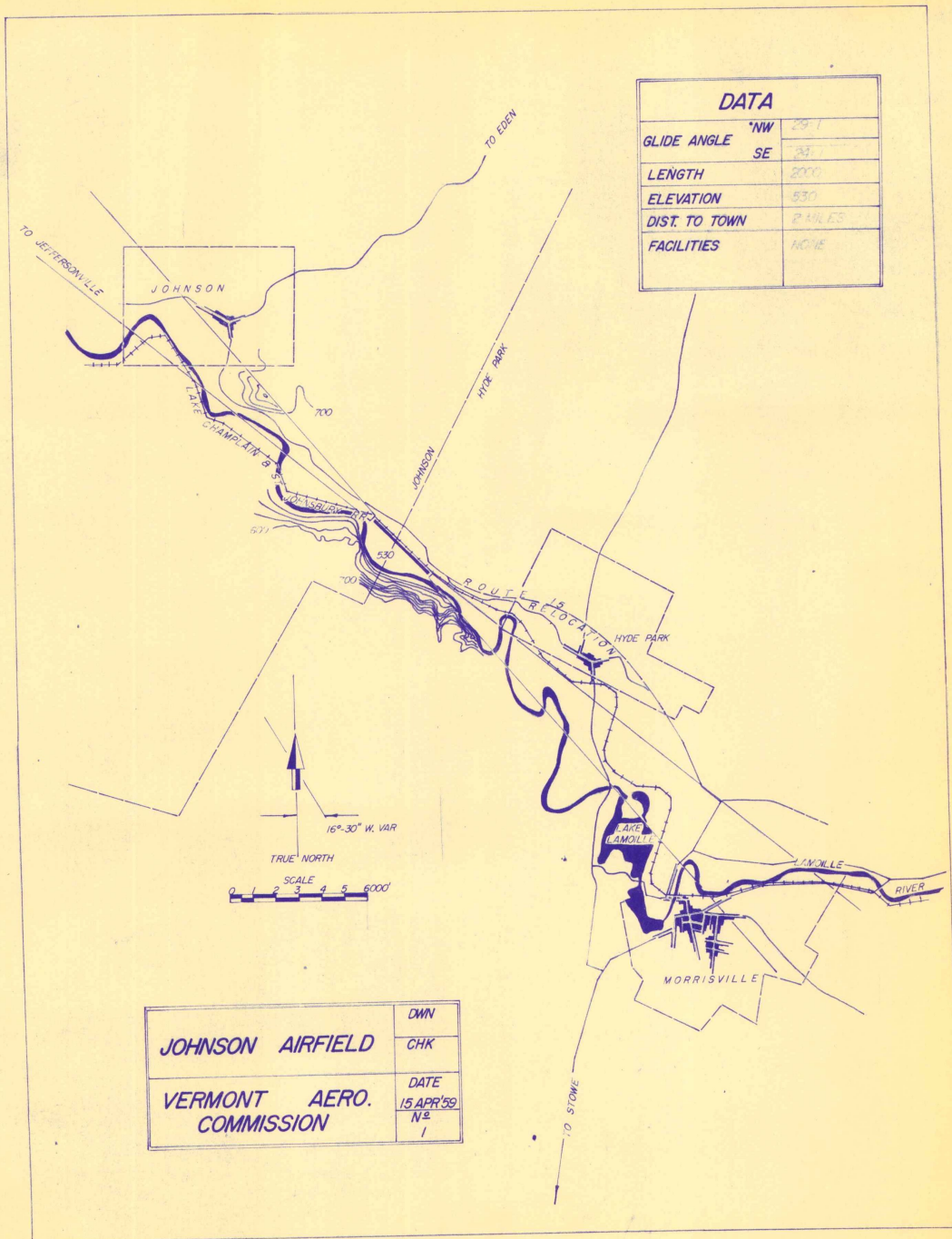




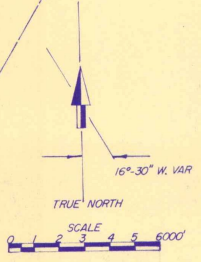


DATA		
GLIDE ANGLE	NW	29.1
	SE	28.1
LENGTH		270'
ELEVATION		530
DIST. TO TOWN		2 MILES
FACILITIES		NONE

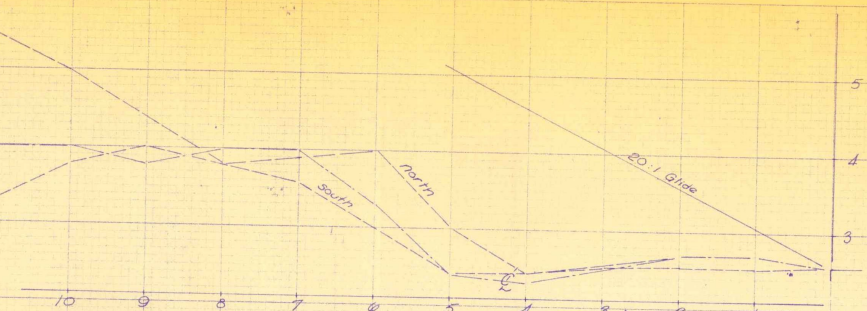
JOHNSON AIRFIELD	DWN
	CHK
VERMONT AERO. COMMISSION	DATE
	15 APR 59
	N ^o 1



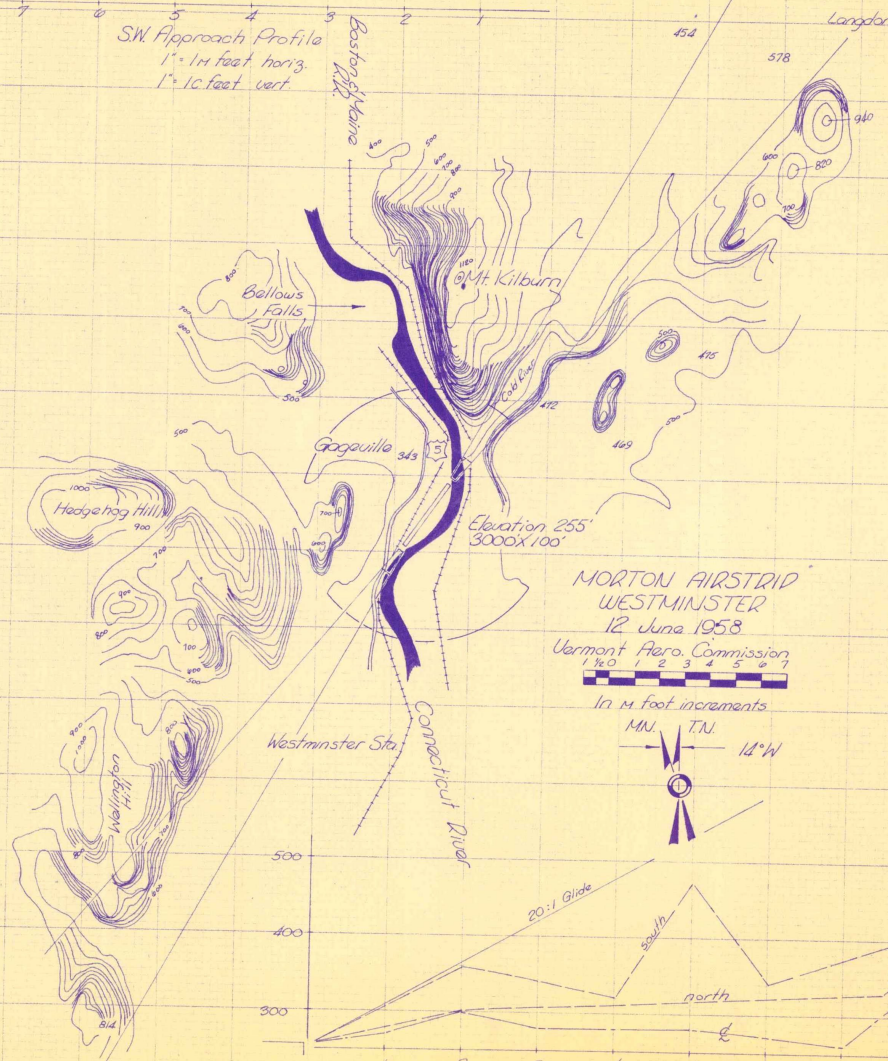
DATA	
GLIDE ANGLE	NW 29° 1
	SE 24° 1
LENGTH	2000
ELEVATION	530
DIST. TO TOWN	2 MILES
FACILITIES	NONE



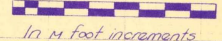
JOHNSON AIRFIELD	DWN
	CHK
VERMONT AERO. COMMISSION	DATE
	15 APR 59
	N ^o 1



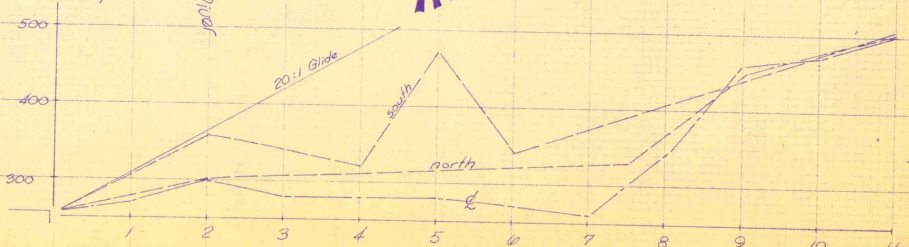
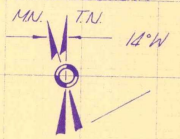
SW Approach Profile
 1" = 14 feet horiz.
 1" = 10 feet vert.



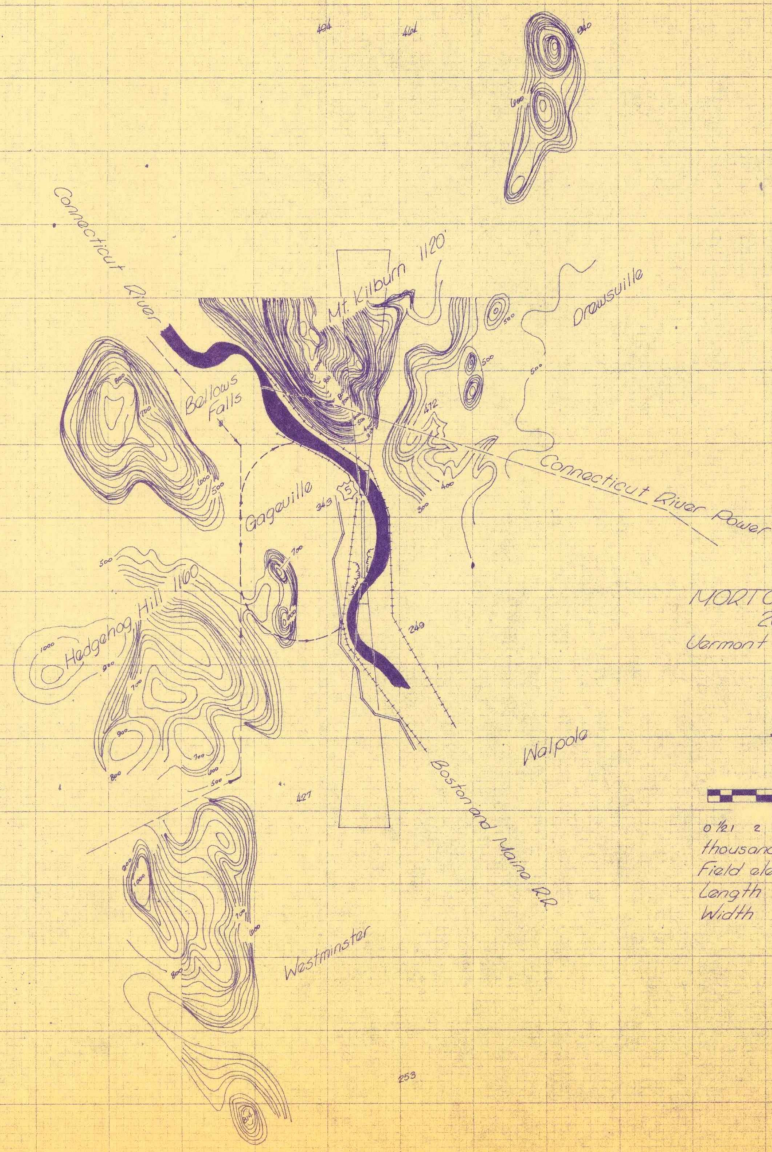
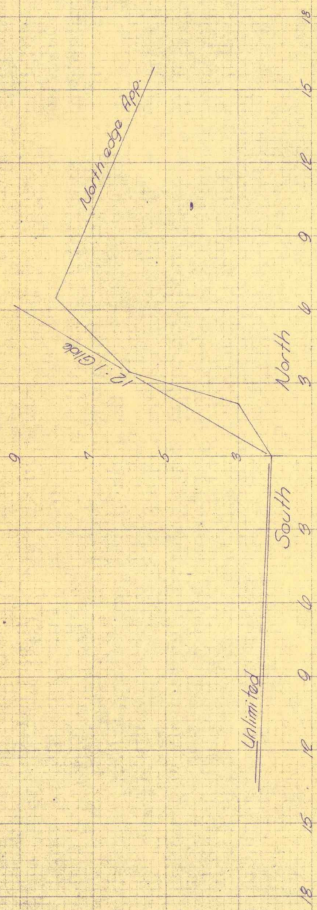
MORTON AIRSTRIP
 WESTMINSTER
 12 June 1958
 Vermont Aero. Commission



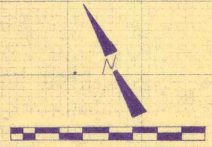
In 4 foot increments



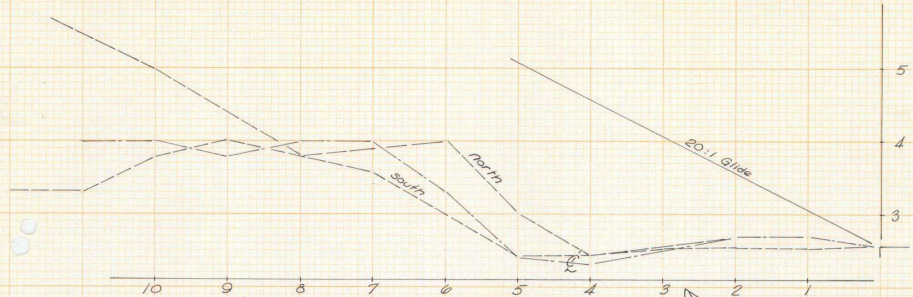
NE Approach Profile
 1" = 14 feet horizontal
 1" = 10 feet vertical



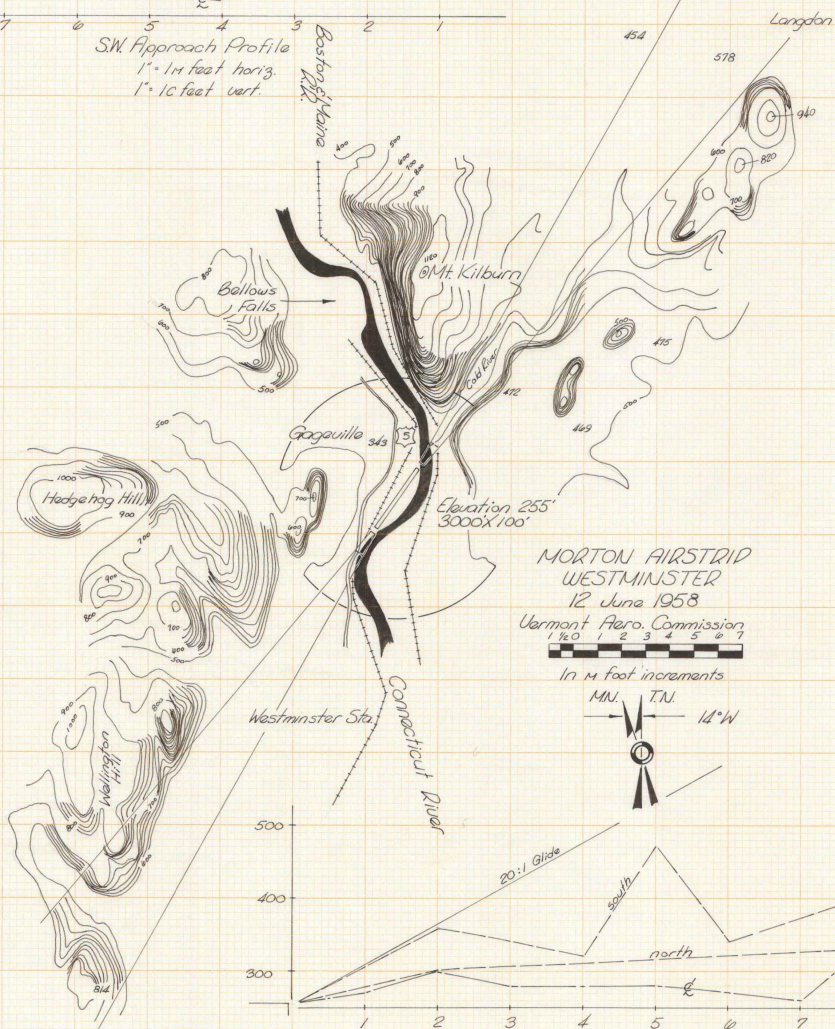
MORTON AIRSTRIP
 20 June 1958
 Vermont Aero. Commission



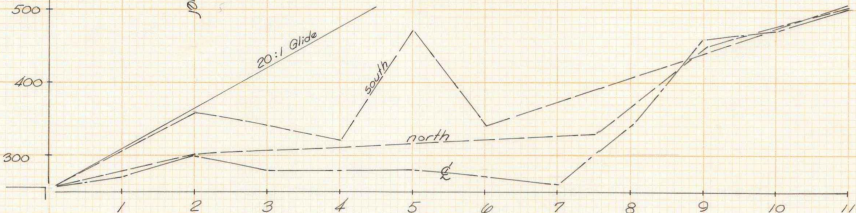
0 1 2 3 4 5 6 7 8
 thousand foot increments
 Field elevation 255 MSL.
 Length 3200' (surf)
 Width 100'



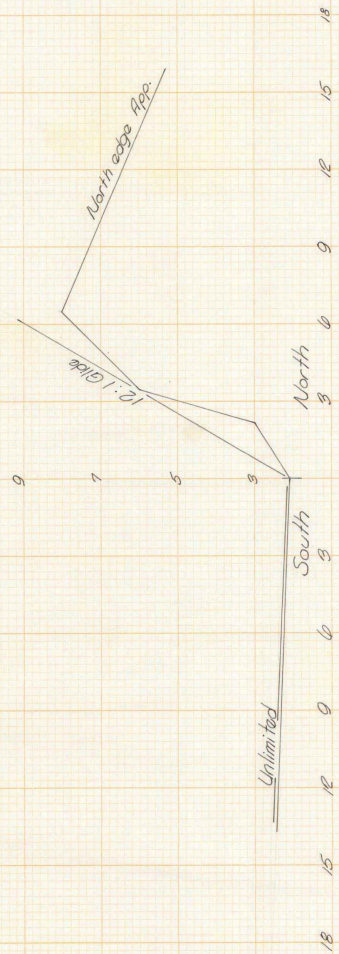
SW Approach Profile
 1" = 14 feet horiz.
 1" = 10 feet vert.



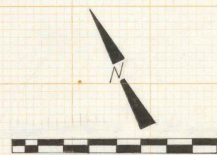
MORTON AIRSTRIP
 WESTMINSTER
 12 June 1958
 Vermont Aero. Commission
 1 1/4 1 2 3 4 5 6 7



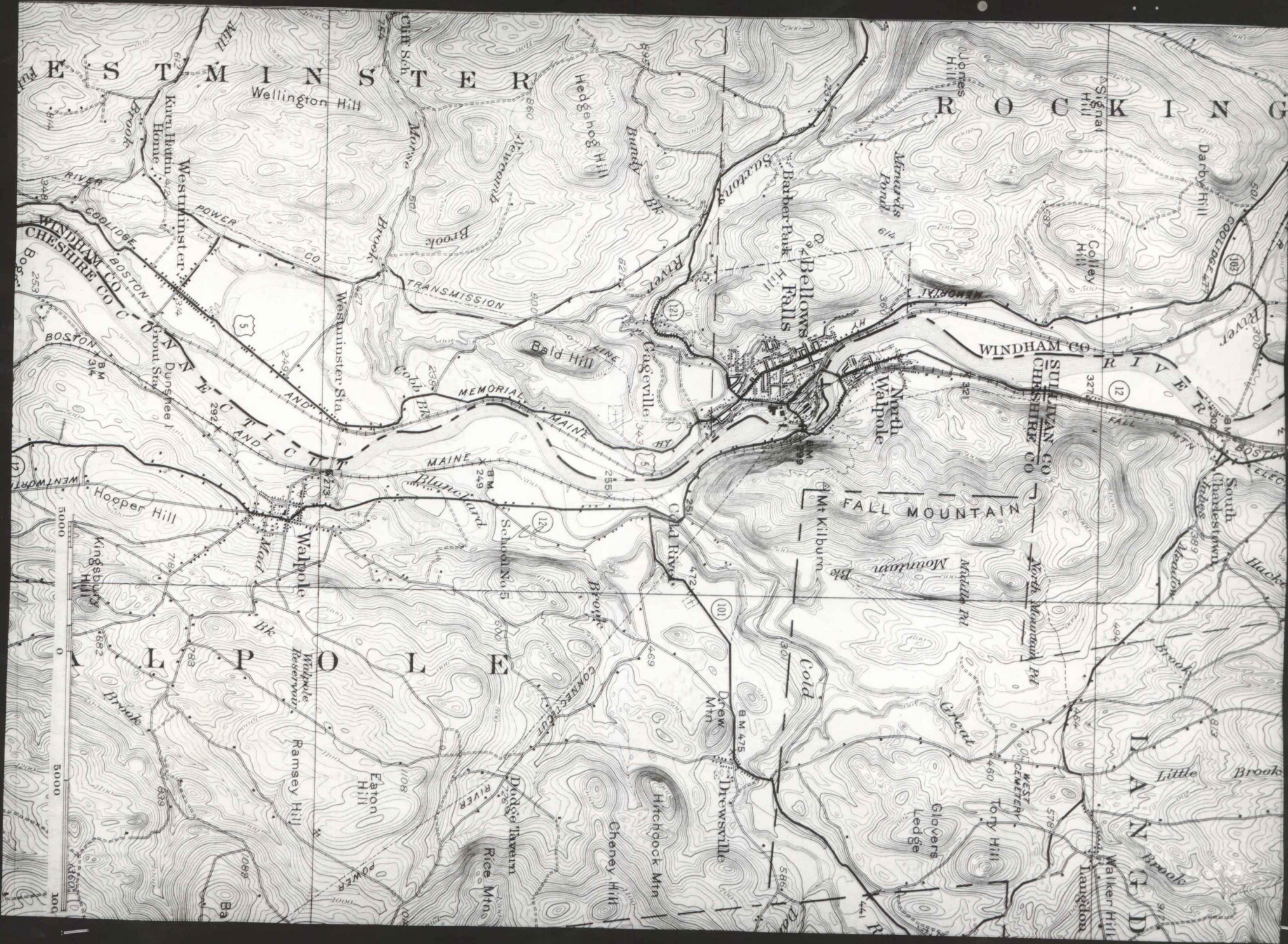
NE Approach Profile
 1" = 14 feet horizontal
 1" = 10 feet vertical



MORTON AIRSTRIP
 20 June 1958
 Vermont Aero. Commission



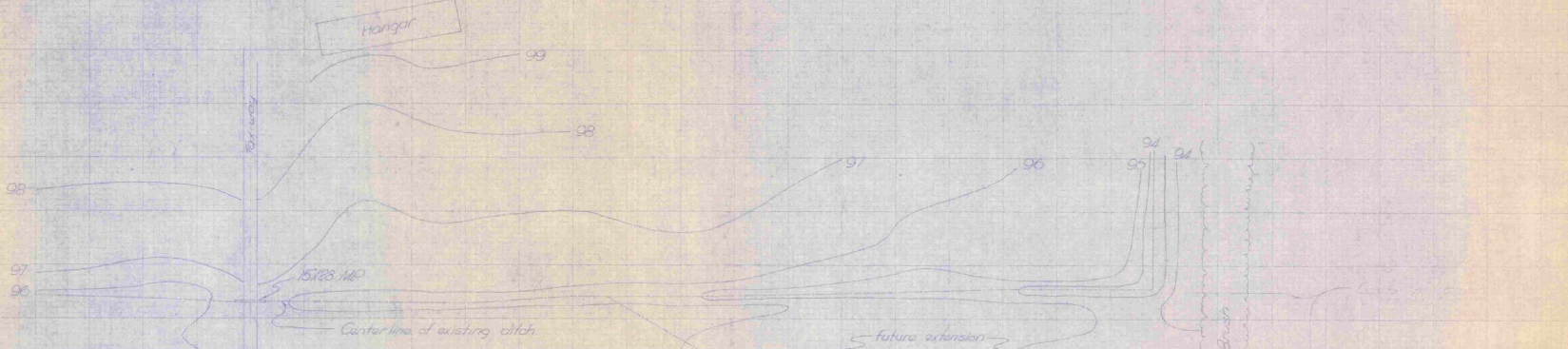
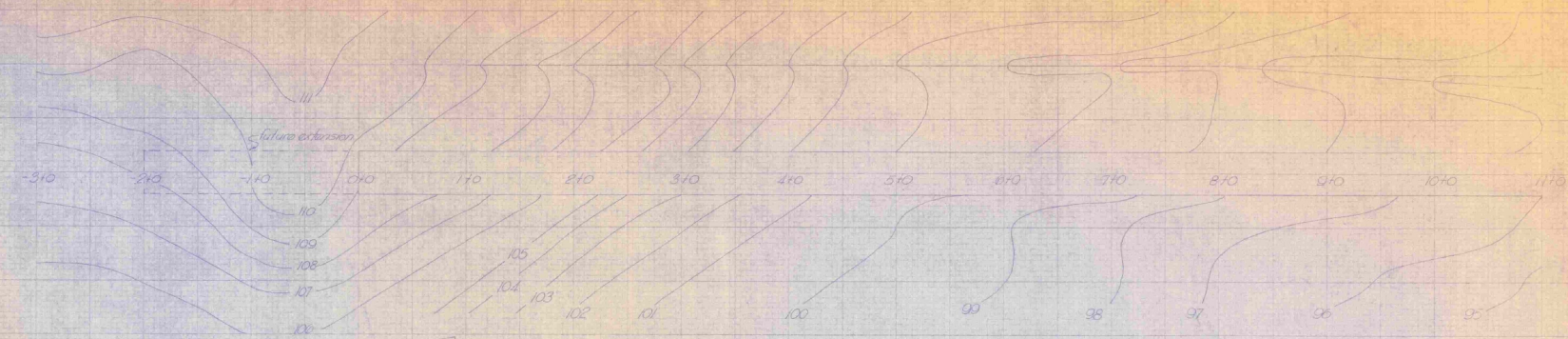
0 1/2 1 2 3 4 5 6 7 8
 thousand foot increments
 Field elevation 255 M.S.L.
 Length 3200' (surf)
 Width 100'



E S T M I N S T E R R O C K I N G

WINDHAM CO. CHESHIRE CO. SULLIVAN CO. WINDHAM CO. CHESHIRE CO. SULLIVAN CO.

WALPOLE
Wentworth
Kingsbury
Walpole
Ramsey Hill
Eaton Hill
Cheney Hill
Hitchcock Mtn
Drewsville
North Walpole
Mt Kiliburn
Fall Mountain
Little Brook
Walker Hill
Langdon

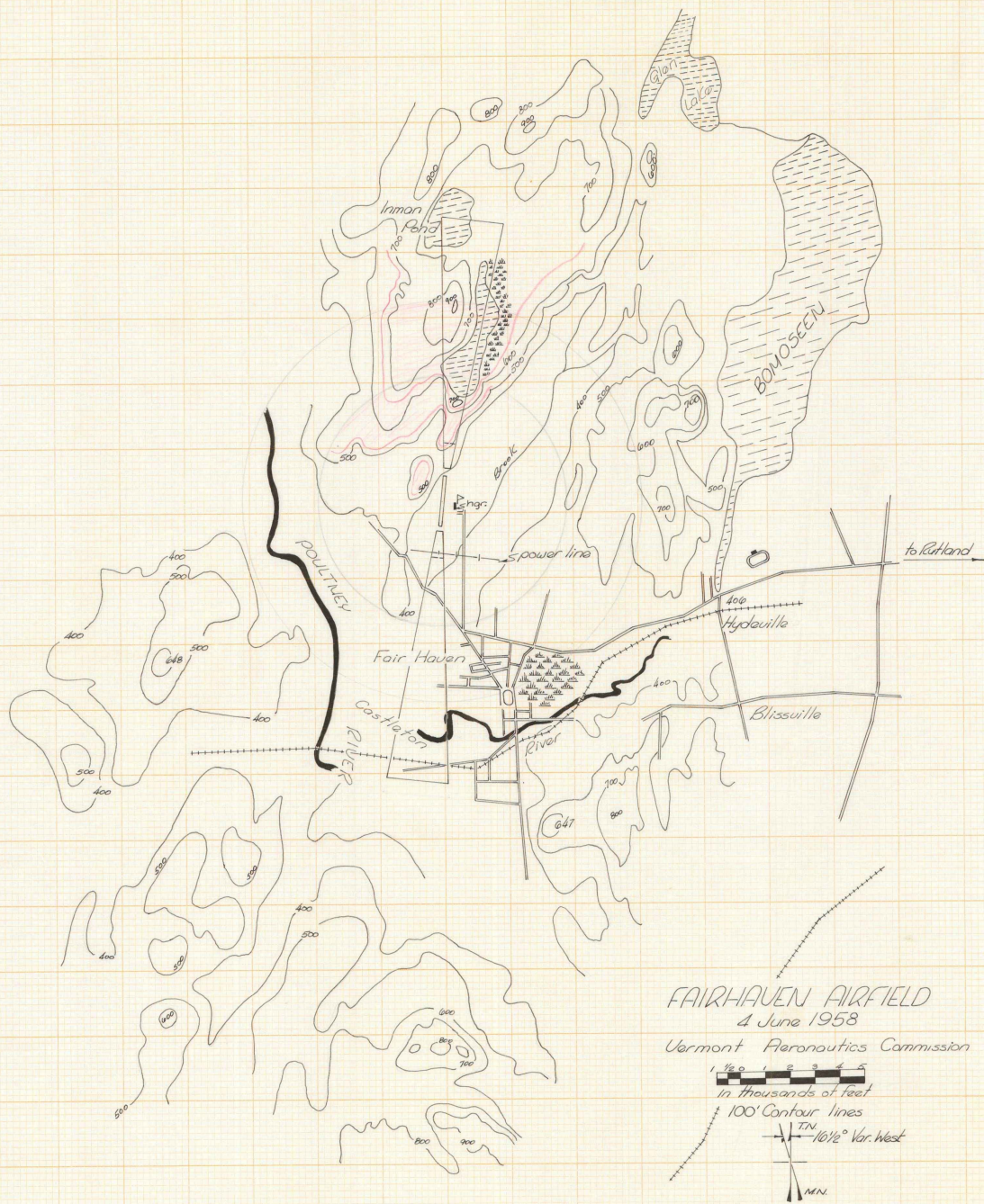


FAIR HAVEN
AIRFIELD
29 July 55
U.S. Army Commission
Scale: 50'

Contour Elevation

FAIR

HAVEN



FAIRHAVEN AIRFIELD
4 June 1958

Vermont Aeronautics Commission

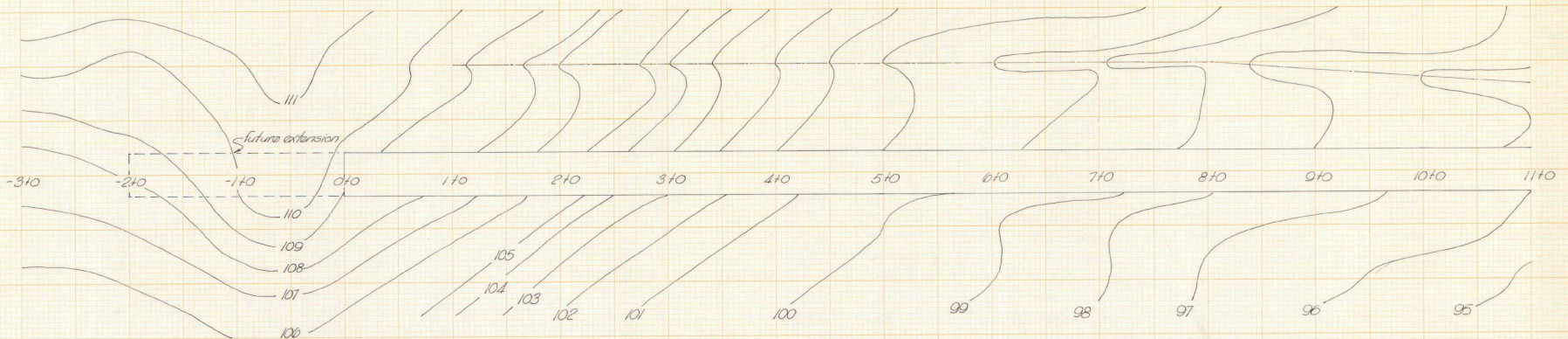
1 1/2 1 2 3 4 5

In thousands of feet

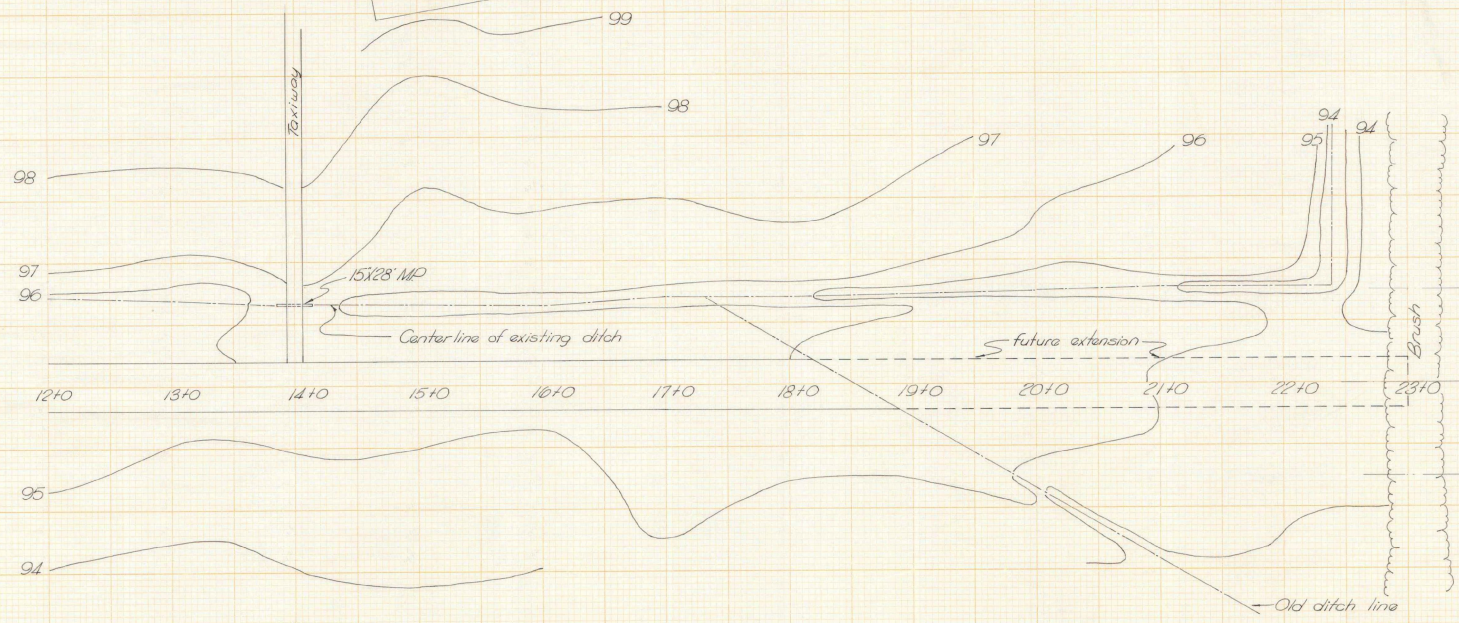
100' Contour lines

10 1/2° Var. West

M.N.

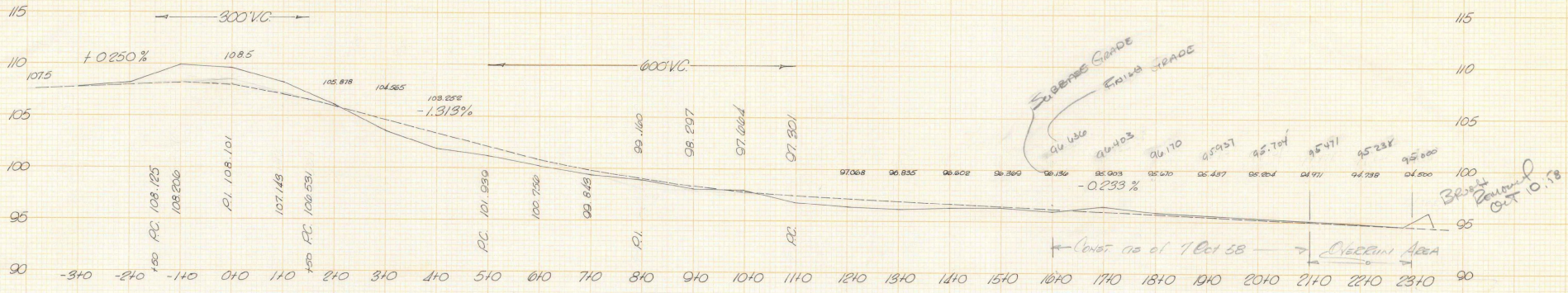


Hangar

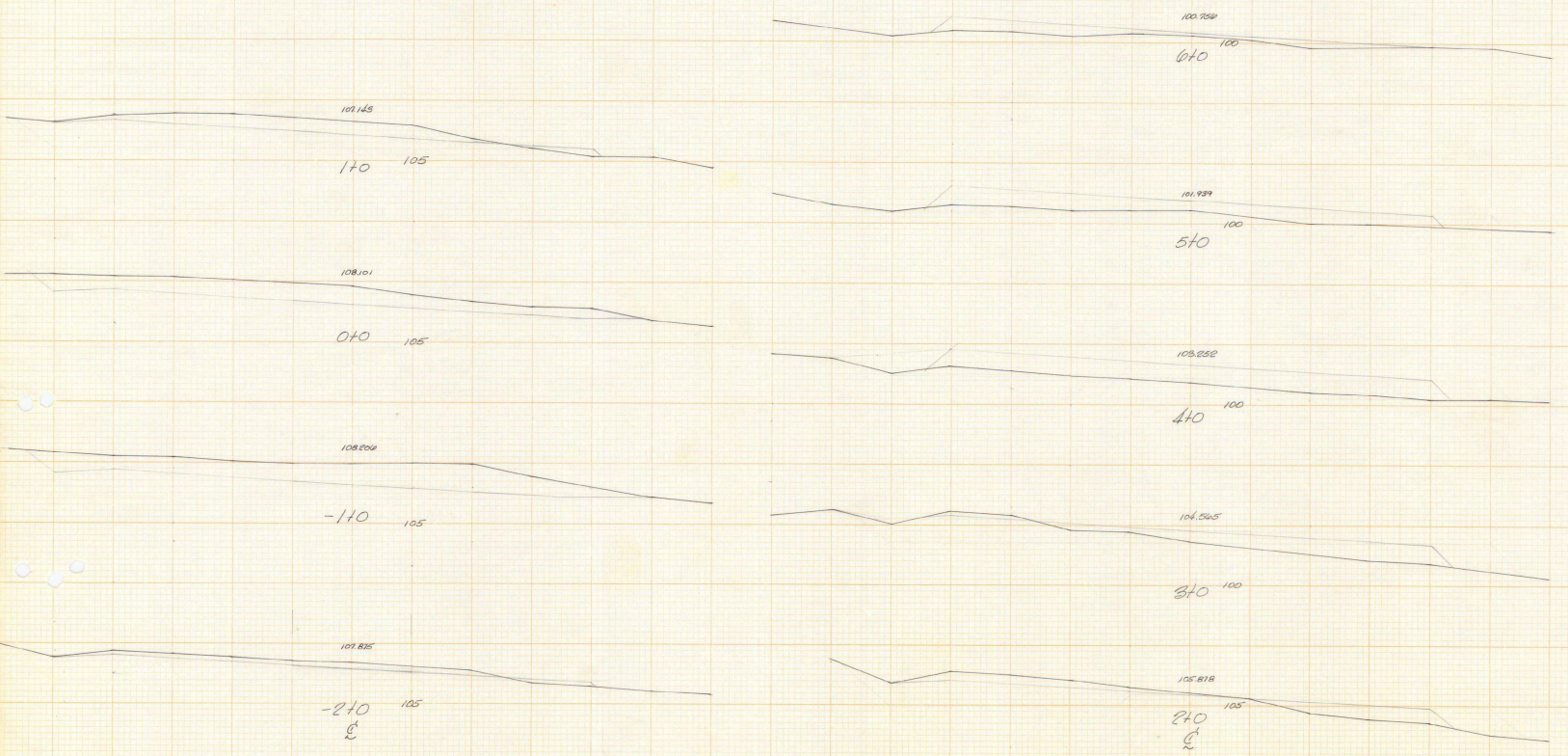


FAIR HAVEN
AIRFIELD
29 July '58
Ut Aero Commission
Scale 1" = 50'

Contour Sheet

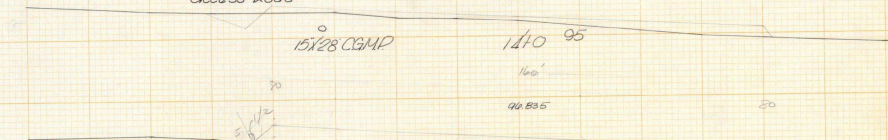
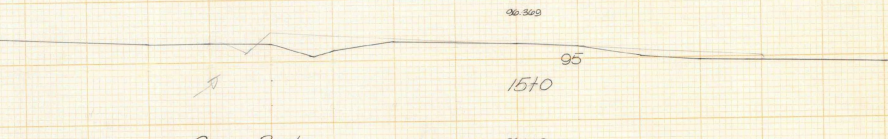
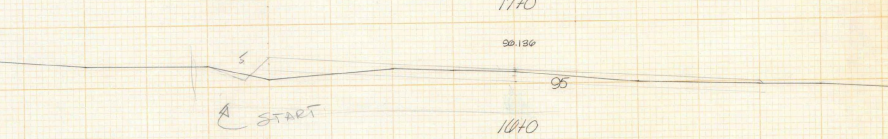
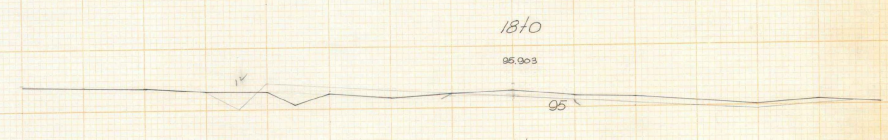
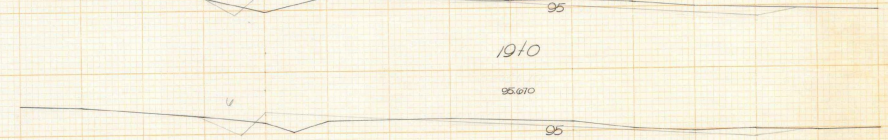
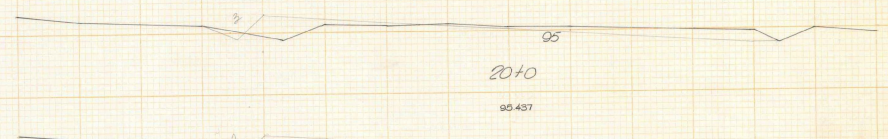
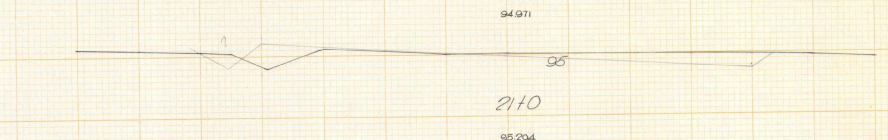
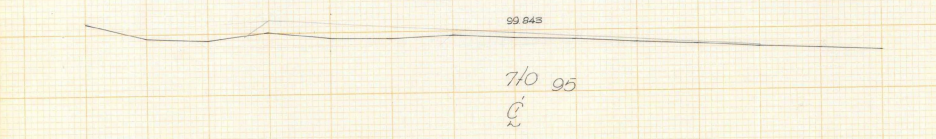
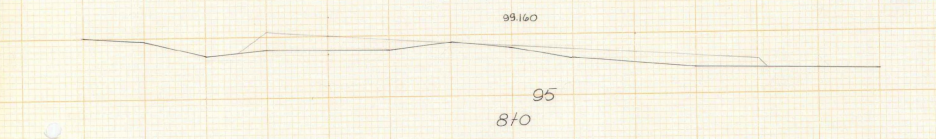
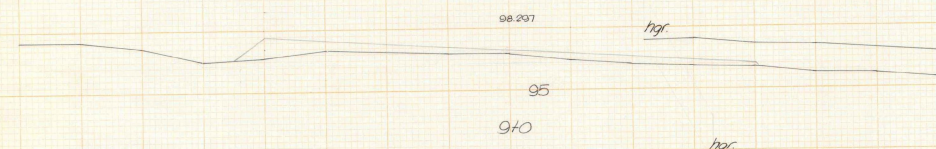
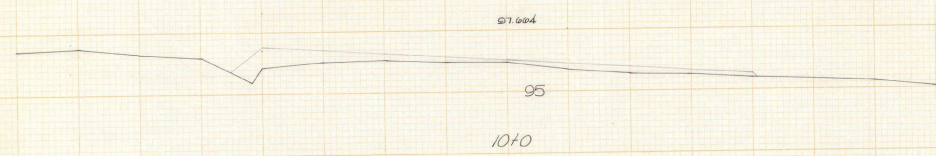
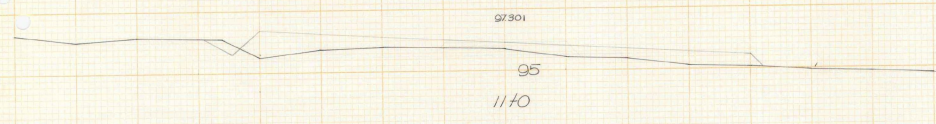
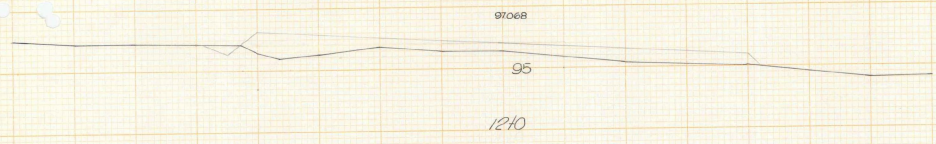


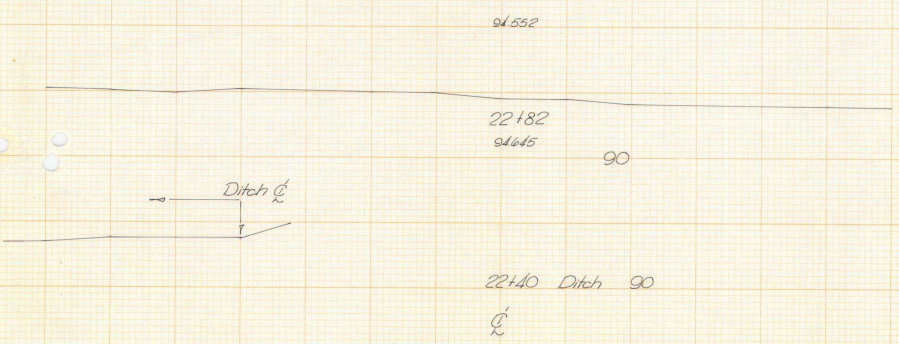
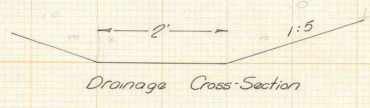
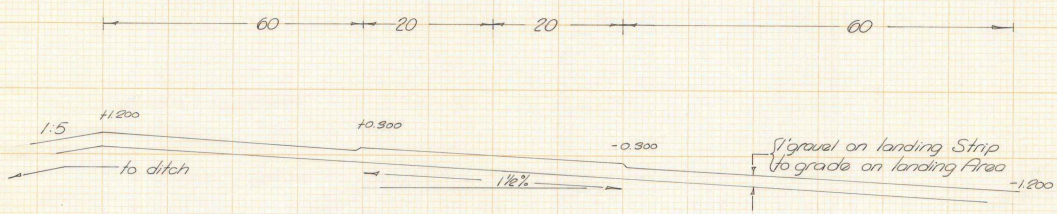
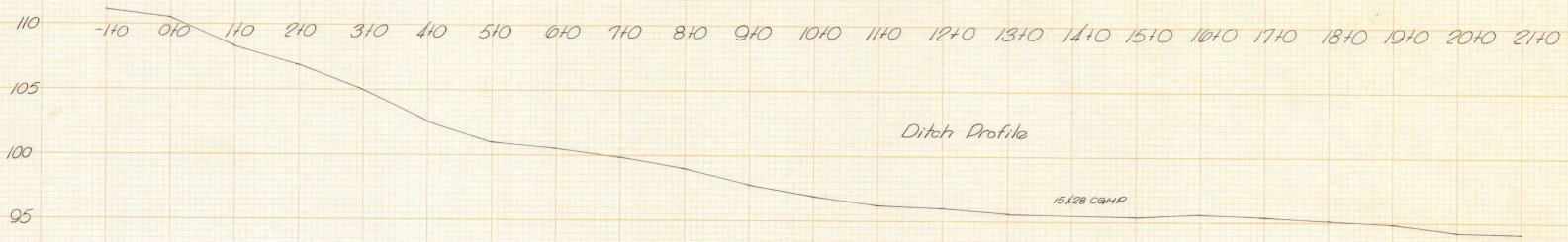
RUNWAY CENTERLINE PROFILE



FAIR HAVEN
AIRFIELD
29 July 1958

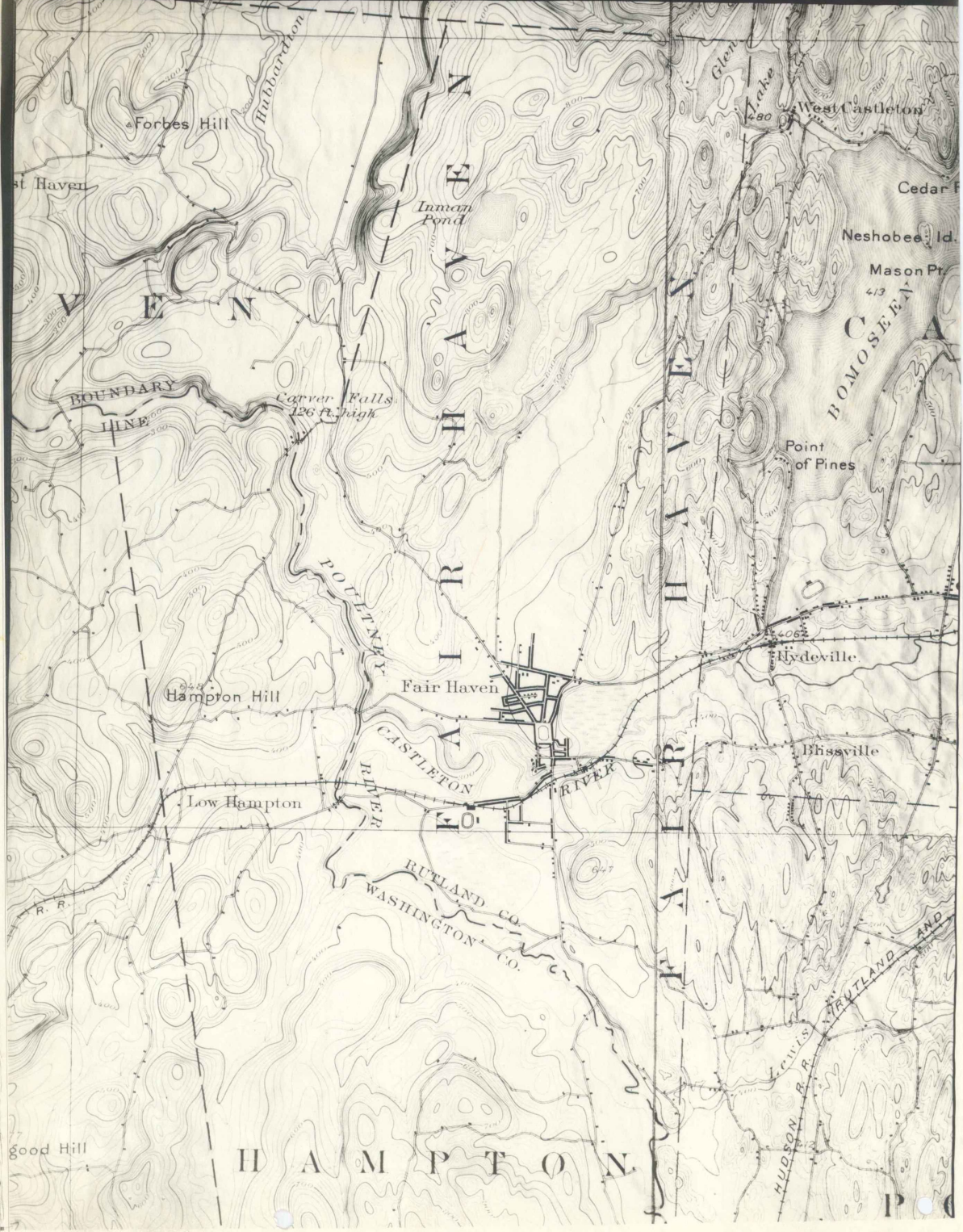
X-SECTIONS
Hor. 1" = 20'
Vert. 1" = 5'





FAIR HAVEN
AIRFIELD
July 1958

DRAINAGE



st Haven

Forbes Hill

Hubbardton

Imman Pond

Carver Falls
126 ft. high

BOUNDARY
LINE

Glen
Lake

West Castleton

Cedar F

Neshobee Id.

Mason Pt.
413

BOMOSEE

Point
of Pines

Hampton Hill

Fair Haven

Hydeville

Bissville

Low Hampton

RUTLAND CO.
WASHINGTON CO.

R. R.

HUDSON R.R.

RUTLAND AND

Good Hill

H A M P T O N

P O

Monadnock Area West
BUD elev.

24

21

PROFILE

7:1 Gilts

Western edge App. zone



North

South

18

15

12

9

6

3

0

3

6

9

12

15

18

21

24

27

30

33

36

39

42

45

48

51

54

57

60

63

66

69

72

75

78

81

84

87

90

93

96

99

102

105

108

111

114

117

120

123

126

129

132

135

138

141

144

147

150

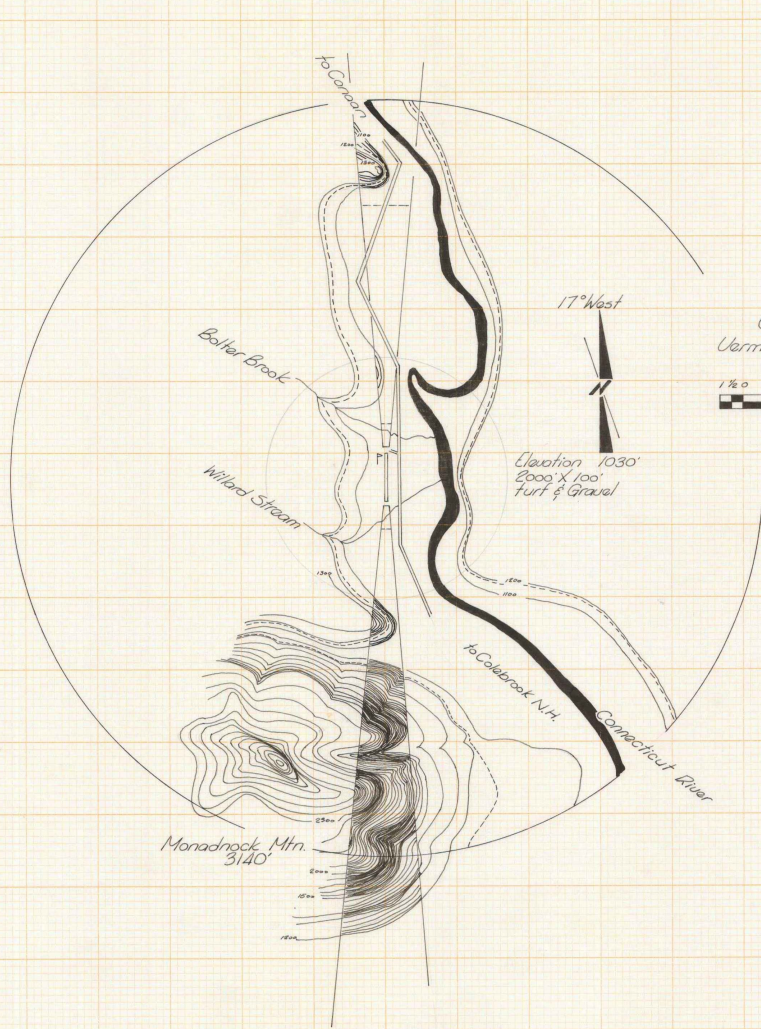
153

156

159

162

165



Hanger 5012

INITIALS

Vermont Agency of
Transportation
Phase III- Interstate
#090303-01

Several
projects

Misc. ~~Original Steel plans~~

~~24-74~~ AIRPORTS

~~1944-1958~~