

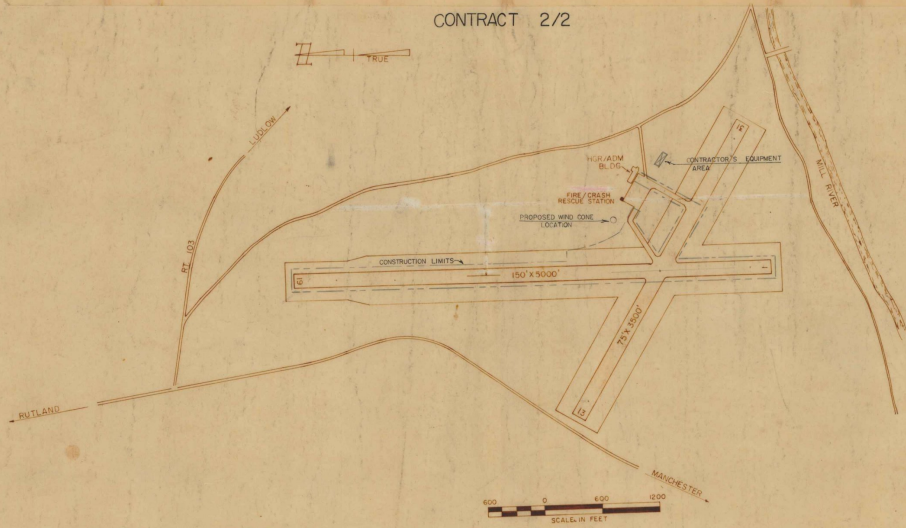
INDEX	
SHEET NO.	DESCRIPTION
1	TITLE SHEET
2	RUNWAY LIGHTING LAYOUT (PHASE I)
3	LIGHTING DETAILS
4	TAXIWAY LIGHTING LAYOUT (PHASE II)
5	WIRING DETAILS

# RUTLAND STATE AIRPORT CLARENDON, VERMONT

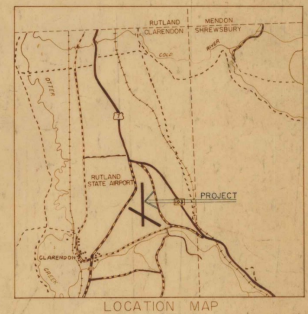
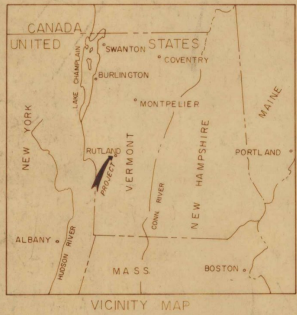
AS BUILT PLANS  
I hereby certify that all the construction required for this set of drawings has been accomplished to satisfaction.  
By: *Charles W. Deane* Project Engineer  
Date: 2/17/75

INSTALLATION OF  
RUNWAY LIGHTING SYSTEM  
(TO INCLUDE MEDIUM INTENSITY RUNWAY AND TAXIWAY LIGHTS AND LIGHTED TWELVE FOOT WIND CONE.)  
ADAP PROJECT NO. 6-50-0015-06

CONTRACT 2/2



ESTIMATED QUANTITIES			
DESCRIPTION	EST. QUANTITY	FINAL QUANTITY	
1. L-125 MRL (CLEAR LENS), STAKE MOUNTED	26 EA.	26 EA.	
18. L-125 MRL (CLEAR/YELLOW LENS), STAKE MTD.	19 EA.	19 EA.	
2. L-125 MRL (CLEAR LENS BASE MTD.)	4 EA.	4 EA.	
3. L-125 MRL (BLUE FILTER) STAKE MTD.	50 EA.	50 EA.	
4. L-125 MRL (RED/GREEN FILTER) STAKE MTD.	16 EA.	16 EA.	
5. L-108 CABLE TRENCH	15,100 L.F.	15,550 L.F.	
6. L-108 1/2" x 8, L#804, 5 KV, TYPE C	20,000 L.F.	20,446 L.F.	
7. L-108 1/2" x 8, BARE COPPER COUNTERPOISE	15,100 L.F.	16,458 L.F.	
8. L-109 MODIFICATIONS TO AIRPORT VAULT	LUMP SUM	1 L.S.	
9. L-107 LIGHTED 12' WIND CONE	1 EACH	1 EA.	
10. L-110 2 WAY X 4" AIRPORT USE ELECT. DUCT	3850 L.F.	643 L.F.	
11. L-122 MRL (CLEAR/YELLOW LENS), BASE MTD.	2 EA.	2 EA.	
12. L-122 MRL (BLUE FILTER), BASE MTD.	2 EA.	2 EA.	

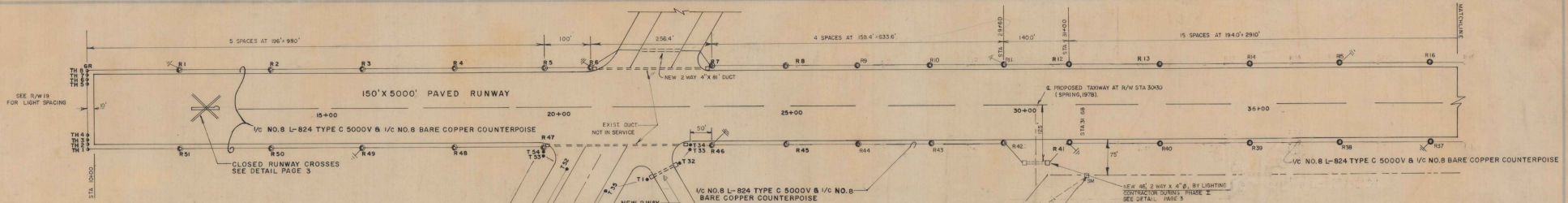


REVISIONS	
DESCRIPTION	DATE

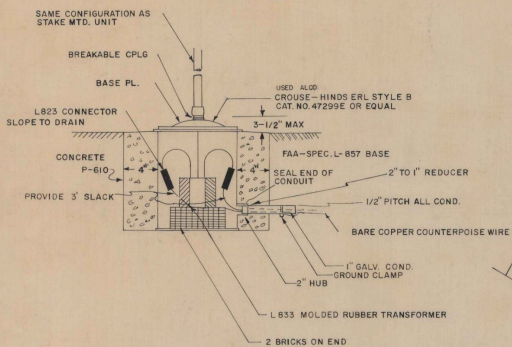
U.S. DEPARTMENT OF TRANSPORTATION  
FEDERAL AVIATION ADMINISTRATION  
APPROVED \_\_\_\_\_ DATE \_\_\_\_\_  
CHIEF ENGINEERING BRANCH  
AIRPORTS DIVISION

RUTLAND STATE AIRPORT  
CLARENDON, VERMONT  
DEPARTMENT OF AERONAUTICS  
APPROVED \_\_\_\_\_ DATE \_\_\_\_\_  
COMMISSIONER  
APPROVED \_\_\_\_\_ DATE \_\_\_\_\_  
AIRPORT ENGR.

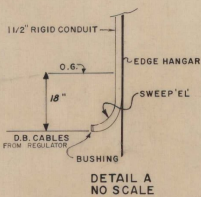
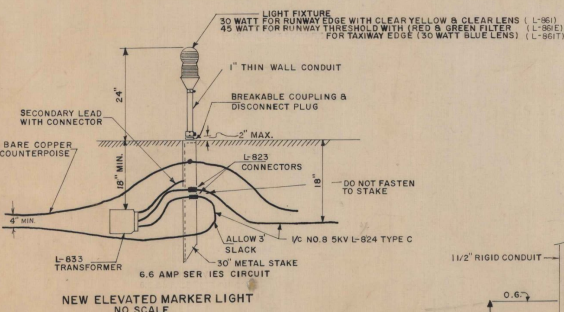
STATE OF VERMONT  
AGENCY OF TRANSPORTATION  
DEPARTMENT OF AERONAUTICS  
MONTPELIER, VERMONT  
WAIL O. LEACH - ENGR  
DATE: SEPT., 1977



**BASE MOUNTED UNIT**



**STAKE MOUNTED UNIT**



**LEGEND**

TH  $\odot$  MEDIUM INTENSITY THRESHOLD LIGHTS (180° RED-180° GREEN FILTER)

R  $\odot$  MEDIUM INTENSITY RUNWAY LIGHTS (CLEAR LENS)

T  $\odot$  MEDIUM INTENSITY TAXIWAY LIGHTS (BLUE FILTER)

— DUCT & MARKERS

CM  $\square$  CABLE MARKER

BY OTHERS IN SPRING 1978

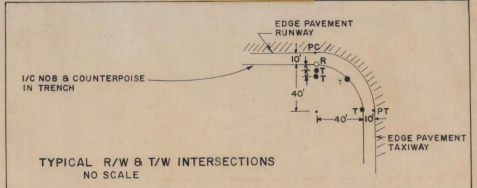
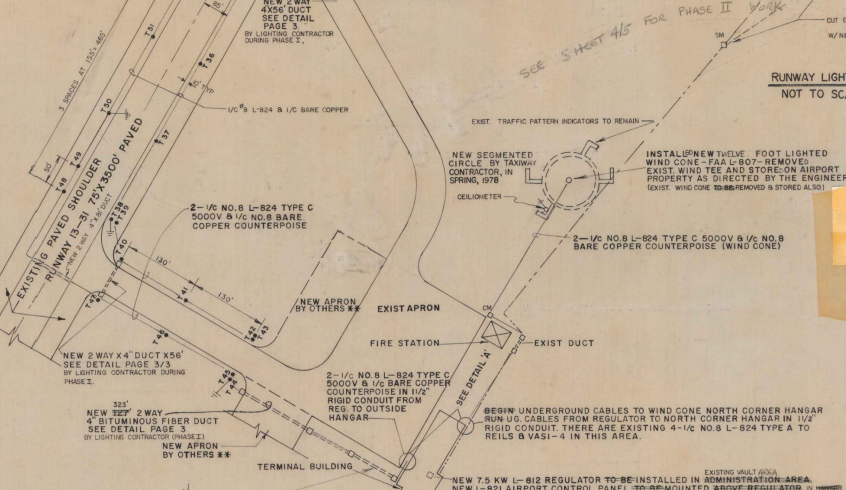
$\odot$  MEDIUM INTENSITY RUNWAY LIGHTS (CLEAR/YELLOW LENS)

**AS BUILT PLANS**

I hereby certify that all the construction required by this set of drawings has been accomplished as indicated herein.

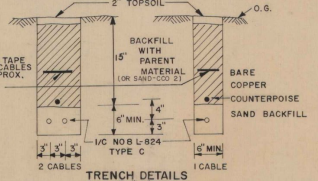
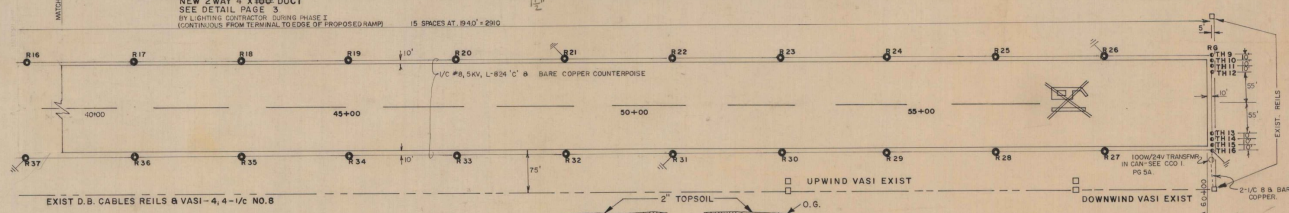
By *Guadalupe* Project Eng. Date *12/12/77*

**RUNWAY LIGHTING PLAN**  
NOT TO SCALE



- NOTES**
- 1 ALL RUNWAY AND TAXIWAY LIGHTS TO BE 10' OFF PAVEMENT EDGE
  - 2 U.G. CABLES TO BE 10' OFF PAVEMENT EDGE
  - 3 MEDIUM INTENSITY RUNWAY LIGHTS (MIRL) & MEDIUM INTENSITY TAXIWAY LIGHTS (MITL) SHOULD CONFORM TO FAA A.C. 150/5340-24
  - 4 EXIST D.B. CABLES FOR MIRLS & WIND CONE TO BE ABANDONED IN PLACE EXCEPT AS DIRECTED BY ENGINEER EXIST MIRLS TO BE REMOVED & STORED ON AIRPORT AS DIRECTED BY THE ENGINEER

**NOTE**  
BASE MOUNTED LIGHTS  
R5, R47, R41, R30, R25, R12, T1, T2



ADAP PROJECT NO. 6-50-0015-06

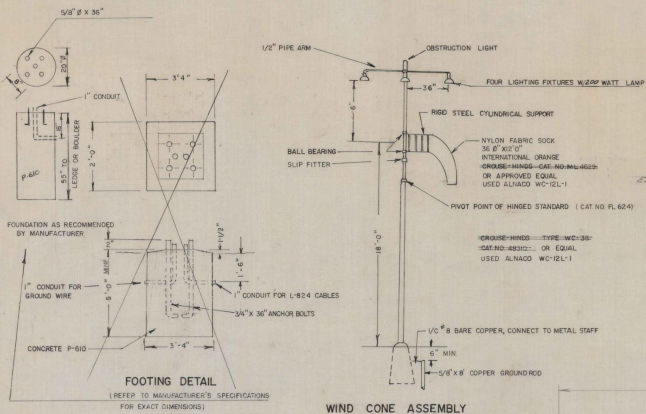
**RUTLAND STATE AIRPORT**  
CLARENDON, VERMONT

**RUNWAY LIGHTING PLAN**  
(PHASE I)

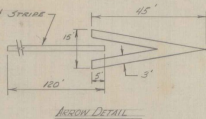
VERMONT AGENCY OF TRANSPORTATION  
DEPARTMENT OF AERONAUTICS  
MONTPELIER, VERMONT

DRAWING 2 OF 5 DRAWN BY L.L.

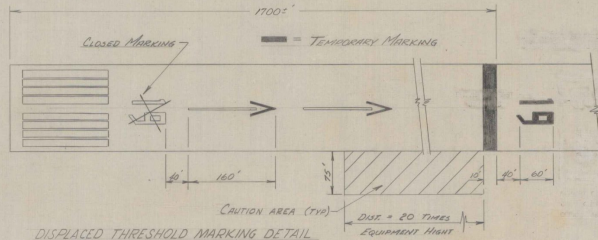
\* USE 6" GRAVEL INSTEAD OF 2" TOPSOIL ON CABLE TRENCHES UNDER PAVED SHOULDER (R/W 13-31) GRAVEL TO MATCH EXIST PAVEMENT AND TO BE WELL COMPACTED



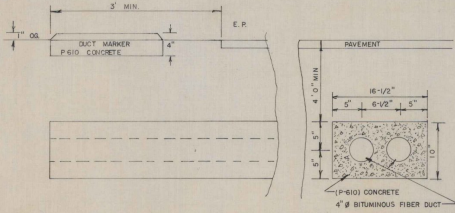
**LIGHTED TWELVEFOOT WIND CONE (L-807)**  
NO SCALE



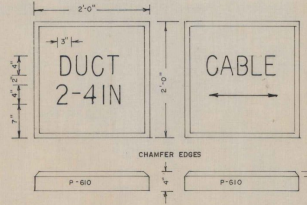
**CLOSED RUNWAY MARKER**  
(NOT A SEPARATE PAY ITEM)



**NOTES:**  
 1. CAUTION AREAS (BOTH SIDES OF RUNWAY) MUST BE FREE OF VEGETATION AND EQUIPMENT WHILE AN AIRCRAFT IS LANDING.  
 2. THE CONTRACTOR SHALL PLACE UPON THE RUNWAY, DISPLACED THRESHOLD MARKINGS AS SHOWN ABOVE PRIOR TO COMMENCING ANY EXPANSION OR PAVEMENT WORK ADJACENT TO THE RUNWAY EDGE. WORK MUST BE DONE AND COMPLETED WITHIN THE OVER RUN AREAS WHERE UPON THE CONTRACTOR SHALL REMOVE THE MARKINGS AND REPEAT THE PROCESS ON THE OPPOSITE END OF THE RUNWAY. THE MATERIAL FOR THE MARKINGS MAY BE A LIGHT 1/4" PLANK (INCLUDES INDICATION OF MINIMUM THICKNESS) OR ANY OTHER MATERIAL AS APPROVED BY THE ENGINEER. ALL MARKINGS SHALL BE SATISFACTORILY REMOVED AT THE COMPLETION OF THE MILLS INSTALLATION. COST OF MARKINGS IS TO BE INCIDENTAL TO AND INCLUDED IN THE VARIOUS MILLS ITEMS OF THE BID. THE CENTER 160 FEET SHALL BE RECOMPLETED AS SOON AS POSSIBLE WITH RUNWAY 1-12 CLOSED FOR ITS FULL LENGTH. CLOSED RUNWAY CROSSES WILL BE UTILIZED AS SHOWN.



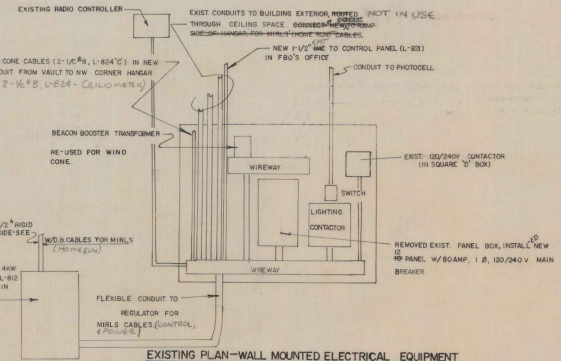
**2 WAY ELECTRICAL DUCT (L-110)**  
NO SCALE



**CABLE & DUCT MARKER TYPICAL**  
NO SCALE



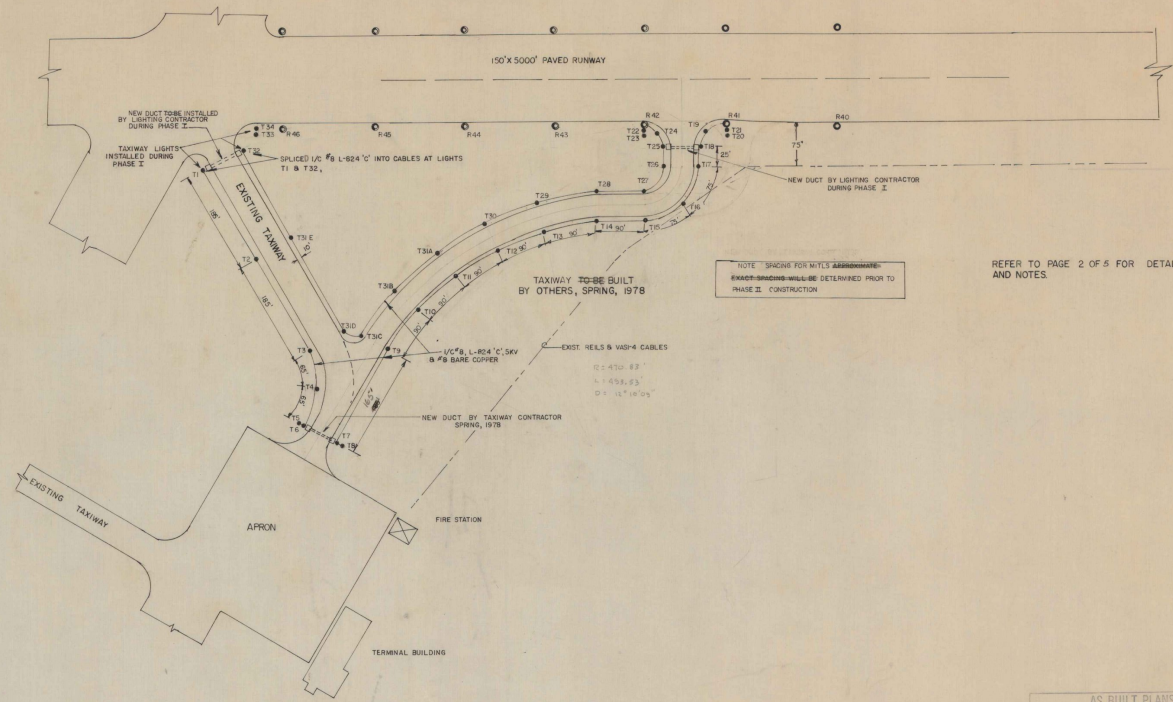
**SPLICE MARKER TYPICAL**



**EXISTING PLAN-WALL MOUNTED ELECTRICAL EQUIPMENT**  
(IN HANGAR)  
NO SCALE

**AS BUILT PLANS**  
 I hereby certify that all the construction required by this set of drawings has been accomplished as indicated herein.  
 By *W. Damico* Project Engineer  
 Date *12/12/77*

ADAP PROJECT NO. 6-50-0015-06  
**RUTLAND STATE AIRPORT  
 CLARENDON, VERMONT**  
 LIGHTING DETAILS  
 VERMONT AGENCY OF TRANSPORTATION  
 DEPARTMENT OF AERONAUTICS  
 MONTPELIER, VERMONT  
 DRAWING: 3 OF 5 DRAWN BY: G.W.D.

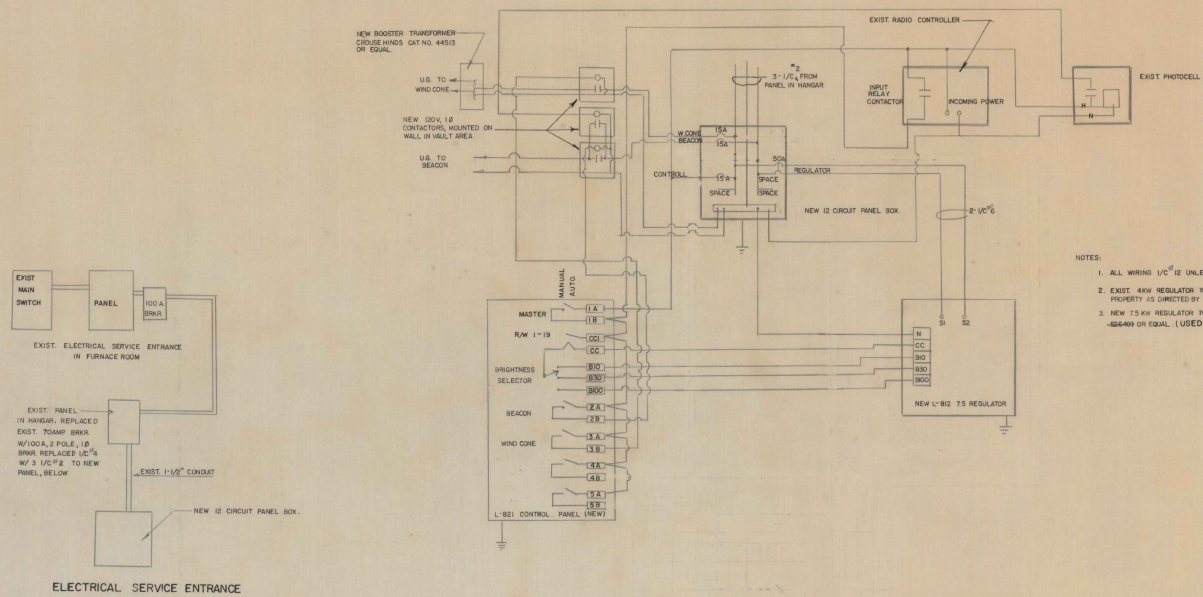


NOTE: SPACING FOR NOTES 2, 3, 4, 5, 6, 7, 8, 9, 10, 11, 12, 13, 14, 15, 16, 17, 18, 19, 20, 21, 22, 23, 24, 25, 26, 27, 28, 29, 30, 31, 32, 33, 34, 35, 36, 37, 38, 39, 40, 41, 42, 43, 44, 45, 46, 47, 48, 49, 50, 51, 52, 53, 54, 55, 56, 57, 58, 59, 60, 61, 62, 63, 64, 65, 66, 67, 68, 69, 70, 71, 72, 73, 74, 75, 76, 77, 78, 79, 80, 81, 82, 83, 84, 85, 86, 87, 88, 89, 90, 91, 92, 93, 94, 95, 96, 97, 98, 99, 100, 101, 102, 103, 104, 105, 106, 107, 108, 109, 110, 111, 112, 113, 114, 115, 116, 117, 118, 119, 120, 121, 122, 123, 124, 125, 126, 127, 128, 129, 130, 131, 132, 133, 134, 135, 136, 137, 138, 139, 140, 141, 142, 143, 144, 145, 146, 147, 148, 149, 150, 151, 152, 153, 154, 155, 156, 157, 158, 159, 160, 161, 162, 163, 164, 165, 166, 167, 168, 169, 170, 171, 172, 173, 174, 175, 176, 177, 178, 179, 180, 181, 182, 183, 184, 185, 186, 187, 188, 189, 190, 191, 192, 193, 194, 195, 196, 197, 198, 199, 200, 201, 202, 203, 204, 205, 206, 207, 208, 209, 210, 211, 212, 213, 214, 215, 216, 217, 218, 219, 220, 221, 222, 223, 224, 225, 226, 227, 228, 229, 230, 231, 232, 233, 234, 235, 236, 237, 238, 239, 240, 241, 242, 243, 244, 245, 246, 247, 248, 249, 250, 251, 252, 253, 254, 255, 256, 257, 258, 259, 260, 261, 262, 263, 264, 265, 266, 267, 268, 269, 270, 271, 272, 273, 274, 275, 276, 277, 278, 279, 280, 281, 282, 283, 284, 285, 286, 287, 288, 289, 290, 291, 292, 293, 294, 295, 296, 297, 298, 299, 300, 301, 302, 303, 304, 305, 306, 307, 308, 309, 310, 311, 312, 313, 314, 315, 316, 317, 318, 319, 320, 321, 322, 323, 324, 325, 326, 327, 328, 329, 330, 331, 332, 333, 334, 335, 336, 337, 338, 339, 340, 341, 342, 343, 344, 345, 346, 347, 348, 349, 350, 351, 352, 353, 354, 355, 356, 357, 358, 359, 360, 361, 362, 363, 364, 365, 366, 367, 368, 369, 370, 371, 372, 373, 374, 375, 376, 377, 378, 379, 380, 381, 382, 383, 384, 385, 386, 387, 388, 389, 390, 391, 392, 393, 394, 395, 396, 397, 398, 399, 400, 401, 402, 403, 404, 405, 406, 407, 408, 409, 410, 411, 412, 413, 414, 415, 416, 417, 418, 419, 420, 421, 422, 423, 424, 425, 426, 427, 428, 429, 430, 431, 432, 433, 434, 435, 436, 437, 438, 439, 440, 441, 442, 443, 444, 445, 446, 447, 448, 449, 450, 451, 452, 453, 454, 455, 456, 457, 458, 459, 460, 461, 462, 463, 464, 465, 466, 467, 468, 469, 470, 471, 472, 473, 474, 475, 476, 477, 478, 479, 480, 481, 482, 483, 484, 485, 486, 487, 488, 489, 490, 491, 492, 493, 494, 495, 496, 497, 498, 499, 500, 501, 502, 503, 504, 505, 506, 507, 508, 509, 510, 511, 512, 513, 514, 515, 516, 517, 518, 519, 520, 521, 522, 523, 524, 525, 526, 527, 528, 529, 530, 531, 532, 533, 534, 535, 536, 537, 538, 539, 540, 541, 542, 543, 544, 545, 546, 547, 548, 549, 550, 551, 552, 553, 554, 555, 556, 557, 558, 559, 560, 561, 562, 563, 564, 565, 566, 567, 568, 569, 570, 571, 572, 573, 574, 575, 576, 577, 578, 579, 580, 581, 582, 583, 584, 585, 586, 587, 588, 589, 590, 591, 592, 593, 594, 595, 596, 597, 598, 599, 600, 601, 602, 603, 604, 605, 606, 607, 608, 609, 610, 611, 612, 613, 614, 615, 616, 617, 618, 619, 620, 621, 622, 623, 624, 625, 626, 627, 628, 629, 630, 631, 632, 633, 634, 635, 636, 637, 638, 639, 640, 641, 642, 643, 644, 645, 646, 647, 648, 649, 650, 651, 652, 653, 654, 655, 656, 657, 658, 659, 660, 661, 662, 663, 664, 665, 666, 667, 668, 669, 670, 671, 672, 673, 674, 675, 676, 677, 678, 679, 680, 681, 682, 683, 684, 685, 686, 687, 688, 689, 690, 691, 692, 693, 694, 695, 696, 697, 698, 699, 700, 701, 702, 703, 704, 705, 706, 707, 708, 709, 710, 711, 712, 713, 714, 715, 716, 717, 718, 719, 720, 721, 722, 723, 724, 725, 726, 727, 728, 729, 730, 731, 732, 733, 734, 735, 736, 737, 738, 739, 740, 741, 742, 743, 744, 745, 746, 747, 748, 749, 750, 751, 752, 753, 754, 755, 756, 757, 758, 759, 760, 761, 762, 763, 764, 765, 766, 767, 768, 769, 770, 771, 772, 773, 774, 775, 776, 777, 778, 779, 780, 781, 782, 783, 784, 785, 786, 787, 788, 789, 790, 791, 792, 793, 794, 795, 796, 797, 798, 799, 800, 801, 802, 803, 804, 805, 806, 807, 808, 809, 810, 811, 812, 813, 814, 815, 816, 817, 818, 819, 820, 821, 822, 823, 824, 825, 826, 827, 828, 829, 830, 831, 832, 833, 834, 835, 836, 837, 838, 839, 840, 841, 842, 843, 844, 845, 846, 847, 848, 849, 850, 851, 852, 853, 854, 855, 856, 857, 858, 859, 860, 861, 862, 863, 864, 865, 866, 867, 868, 869, 870, 871, 872, 873, 874, 875, 876, 877, 878, 879, 880, 881, 882, 883, 884, 885, 886, 887, 888, 889, 890, 891, 892, 893, 894, 895, 896, 897, 898, 899, 900, 901, 902, 903, 904, 905, 906, 907, 908, 909, 910, 911, 912, 913, 914, 915, 916, 917, 918, 919, 920, 921, 922, 923, 924, 925, 926, 927, 928, 929, 930, 931, 932, 933, 934, 935, 936, 937, 938, 939, 940, 941, 942, 943, 944, 945, 946, 947, 948, 949, 950, 951, 952, 953, 954, 955, 956, 957, 958, 959, 960, 961, 962, 963, 964, 965, 966, 967, 968, 969, 970, 971, 972, 973, 974, 975, 976, 977, 978, 979, 980, 981, 982, 983, 984, 985, 986, 987, 988, 989, 990, 991, 992, 993, 994, 995, 996, 997, 998, 999, 1000.

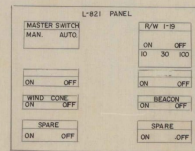
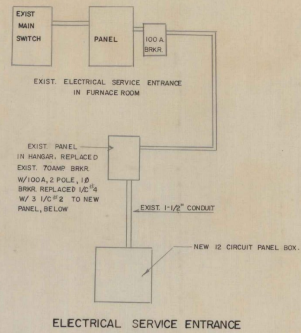
REFER TO PAGE 2 OF 5 FOR DETAILS AND NOTES.

AS BUILT PLANS  
 I hereby certify that all the construction required by this set of drawings has been accomplished as indicated herein.  
 By *RJ* Project Engineer  
 Date *12/13/78*

ADAP PROJECT NO. 6-50-0015-06	
<b>RUTLAND STATE AIRPORT CLARENDON, VERMONT</b>	
RUNWAY LIGHTING PLAN (PHASE II)	
VERMONT AGENCY OF TRANSPORTATION DEPARTMENT OF AERONAUTICS MONTPELIER, VERMONT	
DRAWING 4 OF 5	DRAWN BY GWD



- NOTES:
1. ALL WIRING 1/2" UNLESS OTHERWISE NOTED.
  2. EXIST. 4KW REGULATOR TUBE REMOVED & STORED ON AIRPORT PROPERTY AS DIRECTED BY THE ENGINEER.
  3. NEW 7.5 KW REGULATOR TO BE HEAVY-DUTY ELECTRIC (CAT. NO. -38649) OR EQUAL. (USED SEPSCO L-812)



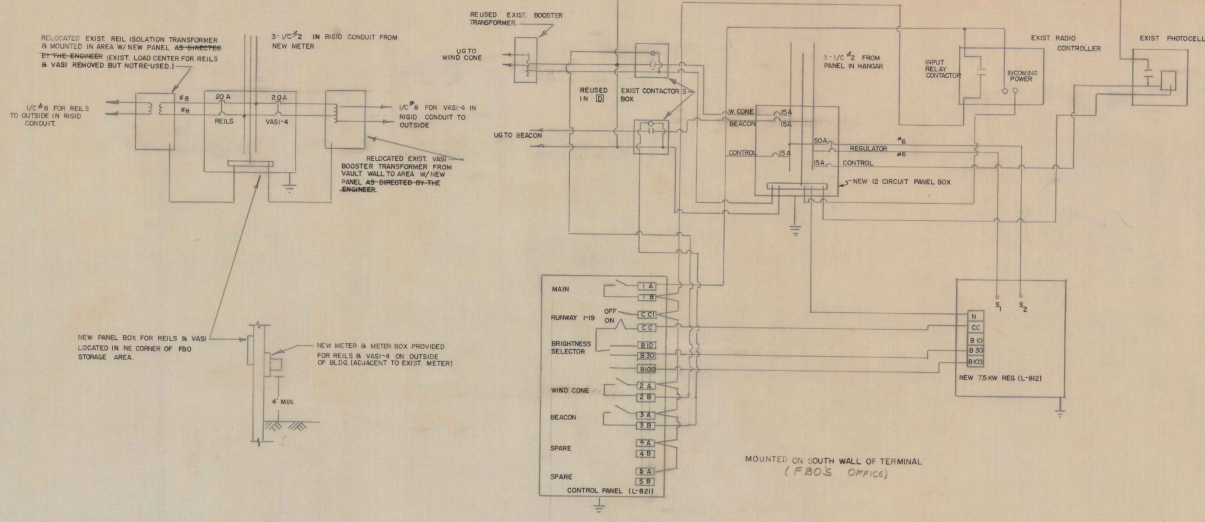
L-821 PANEL LAYOUT

REFER TO REVISED WIRING DIAGRAM AS ADVERTISED BY ADDENDUM NO. 1 - REFER TO PAGE 5A.

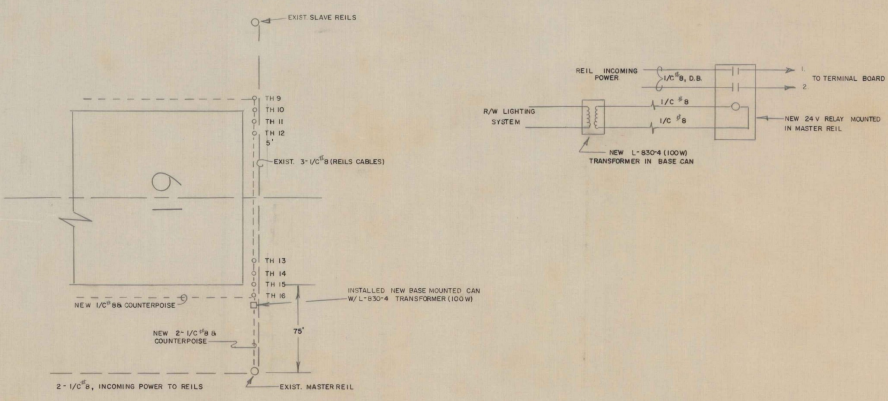
WIRING DIAGRAM

AS BUILT PLANS  
 I hereby certify that all the construction required by this set of drawings has been accomplished as indicated herein.  
 By Q. W. Dames Project Engineer  
 Date 12/11/17

ADAP PROJECT NO. 6-50-0015-06  
**RUTLAND STATE AIRPORT  
 CLARENDON, VERMONT**  
 WIRING DETAILS  
 VERMONT AGENCY OF TRANSPORTATION  
 DEPARTMENT OF AERONAUTICS  
 MONTPELIER, VERMONT  
 DRAWING: 5 OF 5      DRAWN BY: D.W.D.



VAULT WIRING DIAGRAM  
ADDENDUM NO. 1



CCO NO. 1

AS BUILT PLANS  
I hereby certify that all the construction required by this set of drawings has been accomplished as indicated herein.  
By *Geo. Damico* Project Engineer  
Date 12/12/77

ADAP PROJECT NO. 6-50-0015-06  
RUTLAND STATE AIRPORT  
CLARENDON, VERMONT

SUPPLEMENTARY INFORMATION

VERMONT AGENCY OF TRANSPORTATION  
DEPARTMENT OF AERONAUTICS  
MONTPELLIER, VERMONT

DRAWING NO. 5A DRAWN BY GWD