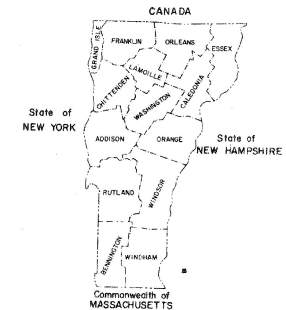
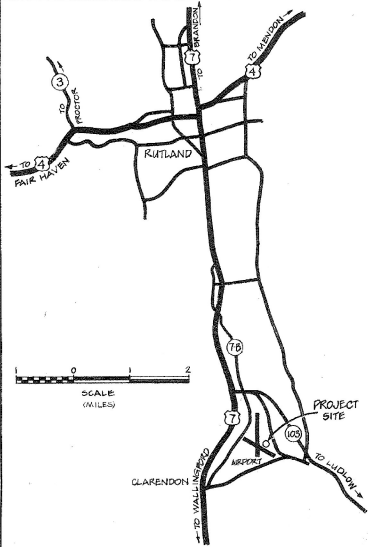


STATE OF VERMONT
AGENCY OF TRANSPORTATION



TERMINAL BUILDING
RUTLAND STATE AIRPORT
CLARENDON, VERMONT
AIR 23-2024

PROJECT TO INCLUDE THE SITE PREPARATION AND CONSTRUCTION OF AN AIRPORT
TERMINAL BUILDING WITH ITS PLUMBING, HEATING, AND ELECTRICAL APPLIANCES.
PROJECT ALSO INCLUDES LAYOUT AND PAVING OF AN APRON EXTENSION AREA.



CONTRACT PLANS
THESE PLANS DO NOT REFLECT
CHANGES MADE ON THE PROJECT.

Dated FEB 12 1988
Simpson Construction, Inc.
Contractor
Signature
Earle M. Simpson, Jr.
President
THE
Transportation Secretary's Signature

SYMBOLS

DIMENSION TO TOP, FACE, OR C.		BRICK	
MAJOR SECTIONS THROUGH BLDG.		SLATE	
LARGE SCALE DETAILS & SECTIONS (IN DETAIL BOOK)		STONE	
MATERIAL IN A RELATED PLANE		REEL REINFORCING	
INTERIOR ELEVATIONS		STEEL CROSS SECTION	
DIAMETER		PLYWOOD	
EARTH		WOOD FRAMING CROSS SECTION - CONTINUOUS	
SAND OR GRI		WOOD FRAMING CROSS SECTION - DISCONTINUOUS	
GRAVEL		FINISH WOOD CROSS SECTION	
CRUSHED STONE		FINISH WOOD FACE GRAIN	
CONCRETE		FIBERGLASS INSULATION	
CEMENT MASONRY UNIT		RIGID INSULATION	

ABBREVIATIONS

AB ANCHOR BOLT	HORIZ HORIZONTAL
BLDG BUILDING	INSUL INSULATION
BTW BETWEEN	LB LAS BOLT
CB CARRIAGE BOLT	MAX MAXIMUM
CL CENTER LINE	MIN MINIMUM
CL CLOSET	MR MOISTURE RESISTANT
CMU CEMENT MASONRY UNIT (CONCRETE BLOCK)	NIC NOT IN CONTRACT
COLS COLLAPS	OC ON CENTER
CONT CONTINUOUS	PERP PERPENDICULAR
DBL DOUBLE	PL PLATE
DF DRINKING FOUNTAIN	POLY POLYETHYLENE
DR DOOR	PR PAIR
DN DOWN	R RISER
EF EACH FACE	RO ROUGH OPENING
EL ELEVATION	ST STEEL
EK EYEN WAY	STD STANDARD
EXT EXTERIOR	TLC TOP OF CURB
FCO FLOOR CLEAN OUT	T & G TONGUE AND GROOVE
FD FLOOR DRAIN	TYP TYPICAL
FDN FOUNDATION	VERT VERTICAL
FFC FIRE EXTINGUISHER CABINET	VB VAPOR BARRIER
FFP FACE OF FOUNDATION	W WITH
FS FACE OF STUD	WO WOOD
GB GYPSUM WALL BOARD	FF FINISH FLOOR
HDC HANDICAPPED	

INDEX TO DRAWINGS

1 of 19	T-1 TITLE SHEET
SITE DRAWINGS	
2 "	S-1 SITE PLAN & LANDSCAPING
ARCHITECTURAL	
3 "	A-1 FOUNDATION PLAN
4 "	A-2 FIRST FLOOR PLAN
5 "	A-2REF FIRST FLOOR REFERENCE PLAN
6 "	A-3 MEZZAINE PLAN
7 "	A-4 NORTH & EAST ELEVATIONS
8 "	A-5 SOUTH & WEST ELEVATIONS
9 "	A-6 W/S SECTIONS & RESTROOM ELEVATIONS
10 "	A-7 C/W SECTIONS & INTERIOR ELEVATIONS
STRUCTURAL	
11 "	SF-1 MEZZAINE FRAMING
12 "	SF-2 ROOF FRAMING
13 "	SF-5 FRAMING X-SECTIONS
ELECTRICAL	
14	E-1 EQUIPMENT ELEVATIONS & MEZZAINE ELECTRICAL PLAN
15	E-2 FIRST FLOOR ELECTRICAL PLAN & PLAN LAYOUT
MECHANICAL	
16 "	H-1 HEATING PLAN & DETAILS
17 "	P-1 PLUMBING PLAN & DETAILS
STANDARD SITE DETAILS	
18 "	STANDARD D6 (APRIL 4, 1976)
19 "	STANDARD D11 (AUGUST 24, 1981R)
*FOR LARGE SCALE DETAILS SEE "DETAIL BOOK"	

AIP 3-50-0015-02

AGENCY OF ADMINISTRATION
DEPARTMENT OF STATE BUILDINGS

APPROVED: _____ DATE: _____
COMMISSIONER

SUBMITTED BY ORDER OF THE STATE TRANSPORTATION BOARD

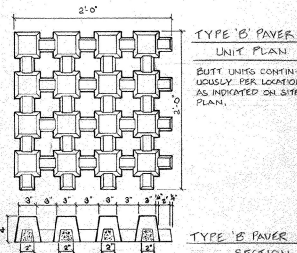
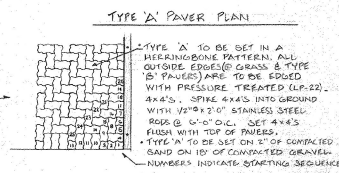
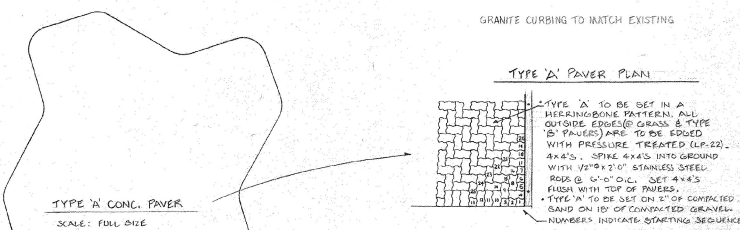
APPROVED: _____ DATE: _____
DIRECTOR OF ENGINEERING AND CONSTRUCTION

DEPARTMENT OF TRANSPORTATION
FEDERAL AVIATION ADMINISTRATION

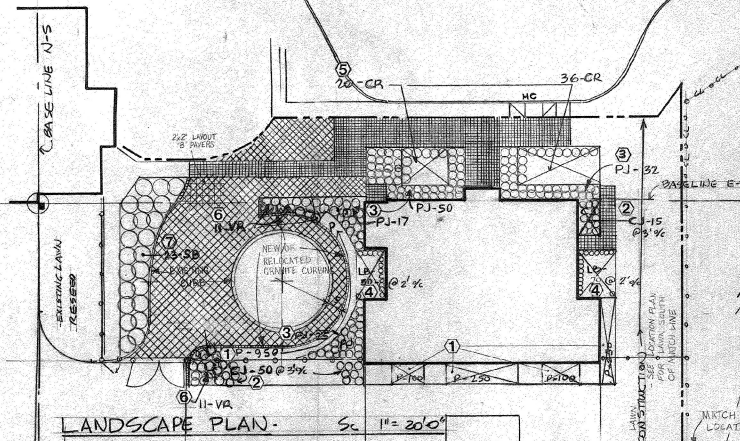
APPROVED: _____ DATE: _____
CHIEF ENGINEERING BRANCH - AIRPORTS DIVISION

PROJECT AIR NO. 23-2024

SHEET 1 of 19 SHEETS

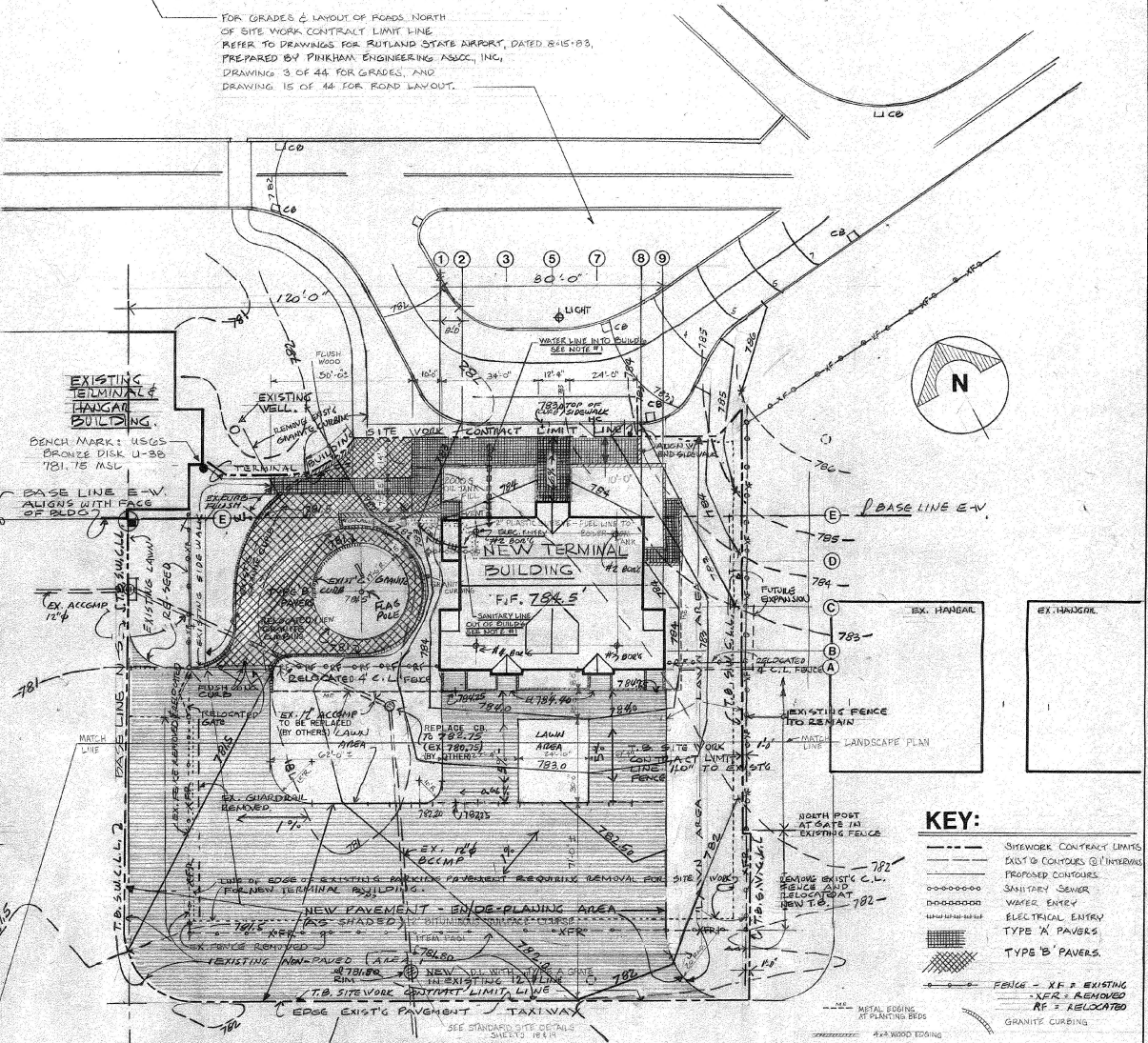


TYPE 'B' TO BE SET ON 2" OF COMPACTED SAND ON 12" OF COMPACTED GRANITE. FILL VOIDS IN PAVERS FLUSH WITH A MIXTURE OF TOPSOIL, LIME, FERTILIZER (0-20-30) AND PEAT MOSS. WATER WITH A MIST SPRAY TO SETTLE. ADD POSITIONAL TOPSOIL MIX TO BRING THE TOPSOIL FLUSH WITH TOP OF THE PAVERS. ADD POSITIONAL LIME, FERTILIZER, AND MULCH. WHEN GRASS IS 2-7" HIGH, CUT TO 1-1/2".



LANDSCAPE PLAN. Sc 1" = 20'0"

PLANTING LIST	SIZE & REMARKS
1) P. PERIWINKLE - 1650 PLANTS @ 9" x 6" IN 5 BEDS - VINCA MINOR	BARE ROOT
2) CJ - CREEPING JUNIPER - 65 PLANTS @ 3' x 1/2" 2 BEDS - JUNIPER HORIZONTALIS	6" x 1/2" 18" 24" SPREAD, 5 GAL. C
3) PJ - PROSTRATE COMINO JUNIPER - 124 PLANTS - 3" x 4" 4 BEDS - JUNIPER C. DEPRESSA	12-15 HT, 24-30 SP D, 5 GAL. C
4) LB - LOW BUSH BLUEBERRY - 120 PLANTS - 2' x 1/2" IN 2 BEDS - V. AMBUSTIFOLIA LAEVIFLORA	6" x 1/2" HT, 6" FIBER POT
5) CR - CAROLINA ROSE - 50 PLANTS IN TWO BEDS - ROSA CAROLINA	18" x 24" HT, 2 GAL. C
6) VA - VIRGINIA ROSE - 27 PLANTS IN 2 BEDS - ROSA VIRGINIANA	24" x 30" HT, 3 GAL. C
7) SB - SNOW BERRY - 27 PLANTS @ 4' x 1/2" IN ONE 960-SYMPHYCARPUS ALBO LACIN	3" x 1/2" HT, 3 GAL. C/PA B&B



SITE LOCATION PLAN Sc 1" = 20'0"

BUILDING LOCATION, GRADES, SURFACE IMPROVEMENTS & DRAINAGE.
 NOTE #1: SEE SITE UTILITIES PLAN (S&U) FOR CONTINUATION OF BUILDING WATER SERVICE LINE & SANITARY LINE.
 NOTE #2: DATA REGARDING EXISTING PARKING AREA, GRADES, & FENCES DEVELOPED FROM:
 1) AS BUILT RUTLAND STATE AIRPORT PARKING LOT EXTENSION DRAWINGS DATED 7-23-73, G.W. DANNON, RESIDENT ENGINEER.
 2) DRAWINGS PREPARED BY DURESSNE HENRY, RUTLAND STATE AIRPORT, CONTRACT 1 OF 2, PLAN & PROFILE SHEET 4 OF 13, AND GRADING, DRAINAGE DETAILS AND PROFILES SHEET 5 OF 13, DATED 9-12-77 & 9-8-77.

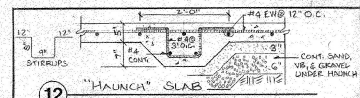
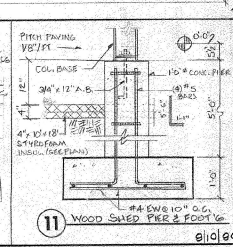
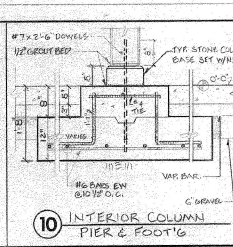
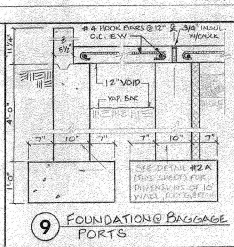
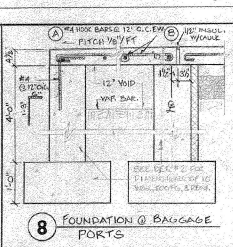
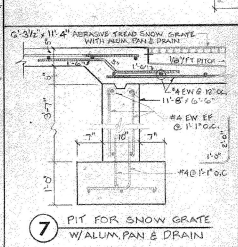
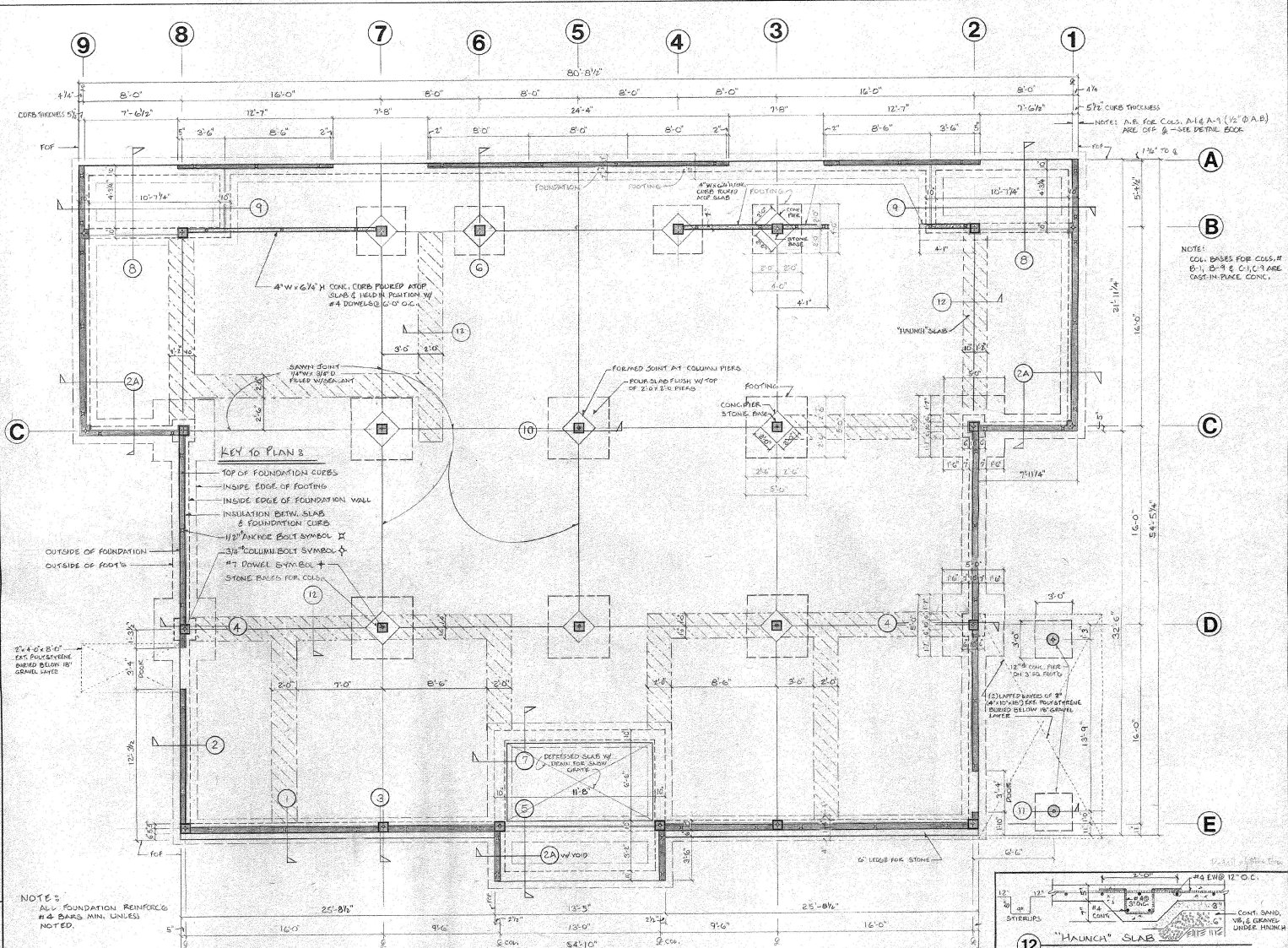
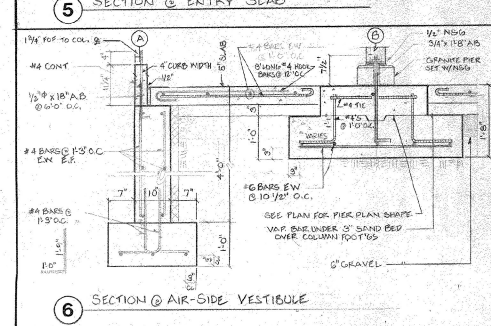
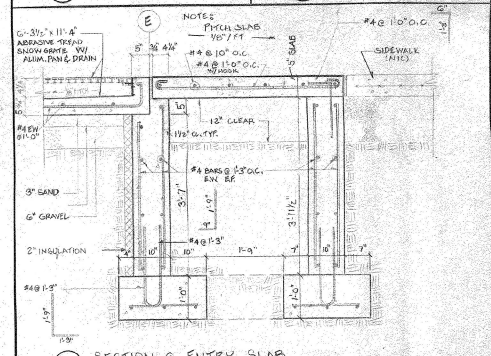
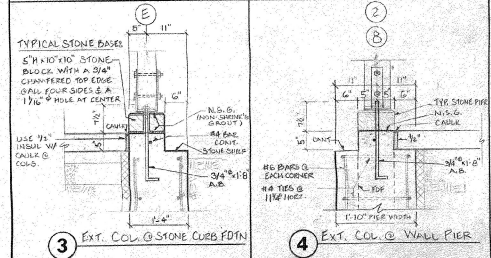
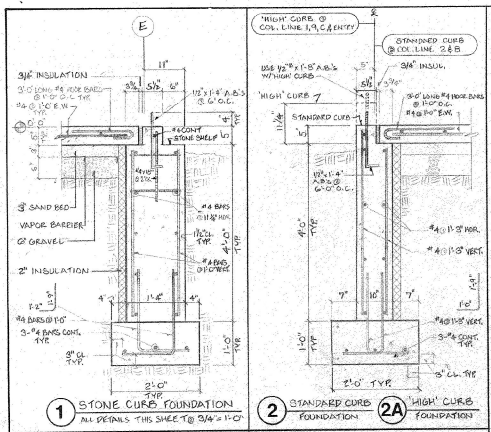
KEY:

- SITEWORK CONTRACTY LIMITS
- - - EXIST'G CONTOURS @ 1' INTERVALS
- - - PROPOSED CONTOURS
- - - SANITARY SEWER
- - - WATER ENTRY
- - - ELECTRICAL ENTRY
- - - TYPE 'A' PAVERS
- - - TYPE 'B' PAVERS
- - - FENCE - X-F = EXISTING
- - - X-F-R = REMOVED
- - - AF = RELOCATED
- - - GRANITE CURBING
- - - METAL EDGING AT PLANTING BEDS
- - - 4x4 WOOD EDGING

STATE OF VERMONT
 DIVISION OF STATE BUILDINGS
 AGENCY OF ADMINISTRATION
 MONTPELIER, VERMONT

RUTLAND TERMINAL BUILDING AIR 23-2024
SITE PLAN & LANDSCAPING
 RUTLAND STATE AIRPORT
 CLARENDON, VERMONT

DATE: 6-8-84	SCALE: 1" = 20'-0"	REVISIONS: 6/21/84 J.S.M./J.H.R.	DWG. NO.: S-1
DRAWN BY: R.A.	APPROVED BY: D.A. BEE D&E		2 OF 19

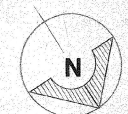
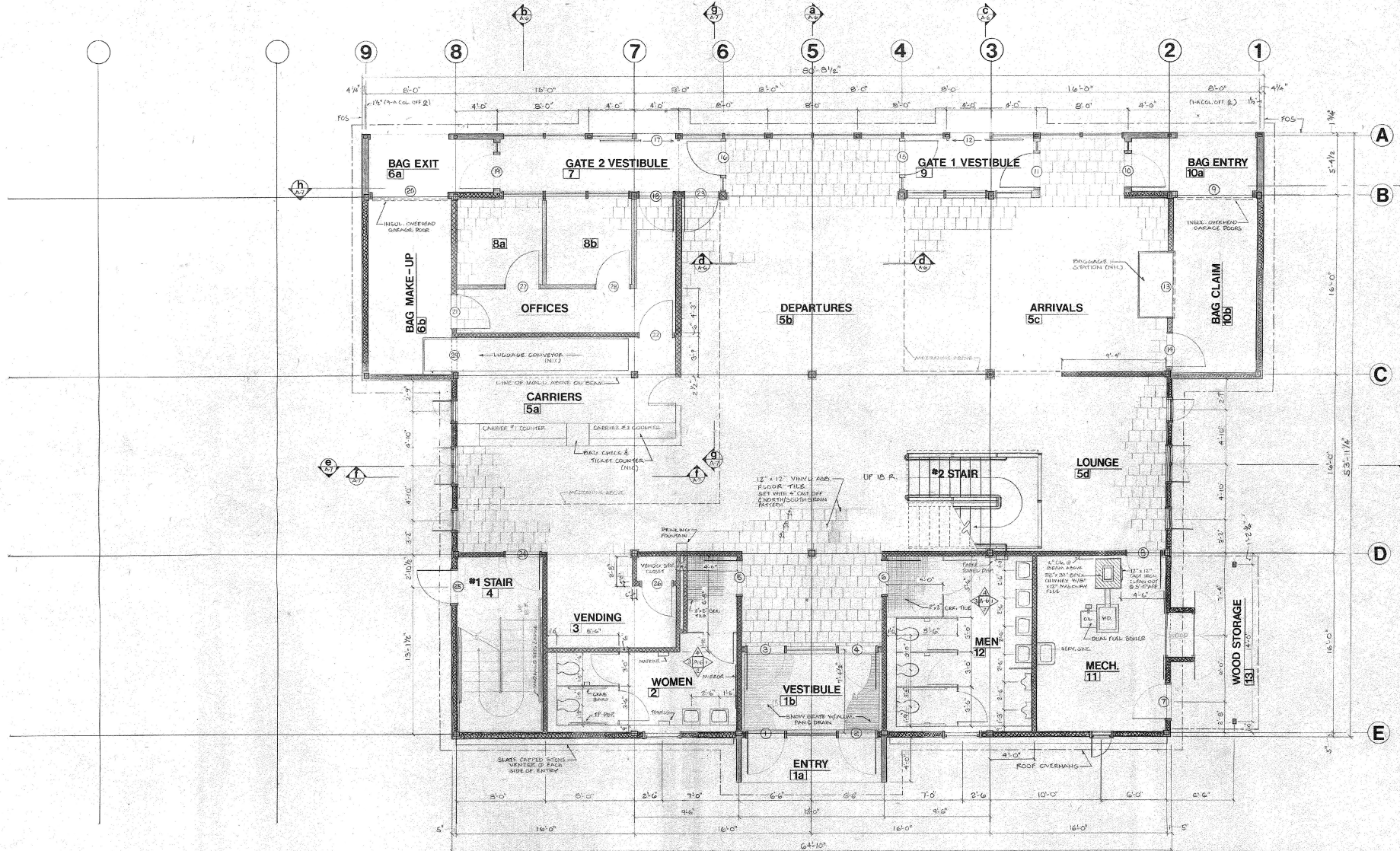


STATE OF VERMONT
DIVISION OF STATE BUILDINGS
AGENCY OF ADMINISTRATION
MONTPELIER, VERMONT

**RUTLAND TERMINAL BUILDING AIR 23-2024
FOUNDATION PLAN**
RUTLAND STATE AIRPORT
CLAFENDON, VERMONT

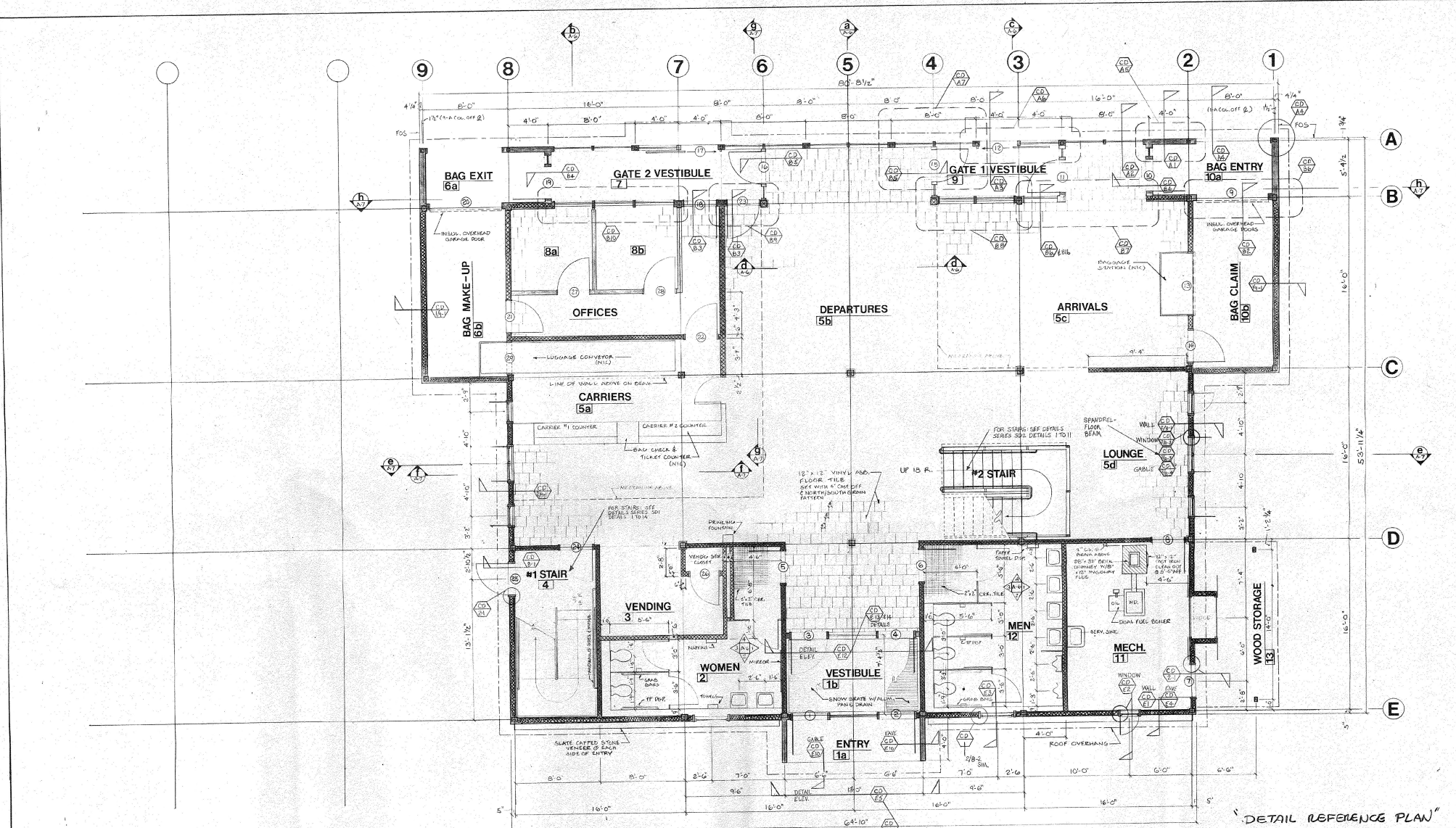
DATE: 6-8-84 SCALE: DRAWN BY: APPROVED BY: REVISIONS: DWG. NO. A-1

3 OF 19



STATE OF VERMONT			
DIVISION OF STATE BUILDINGS			
AGENCY OF ADMINISTRATION			
MONTPELIER, VERMONT			
RUTLAND TERMINAL BUILDING AIR 23-2024			
FIRST FLOOR PLAN			
RUTLAND STATE AIRPORT			
CLARENDON, VERMONT			
DATE:	SCALE:	REVISIONS:	DWG. NO.:
6/5/24	1/8" = 1'-0"	1. SEE SHEET 101E1	A-2
DRAWN BY:	APPROVED BY:		
J.P.C.	D.A. POTTS		
			4 OF 19

6/10/24

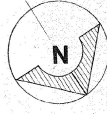


"DETAIL REFERENCE PLAN"

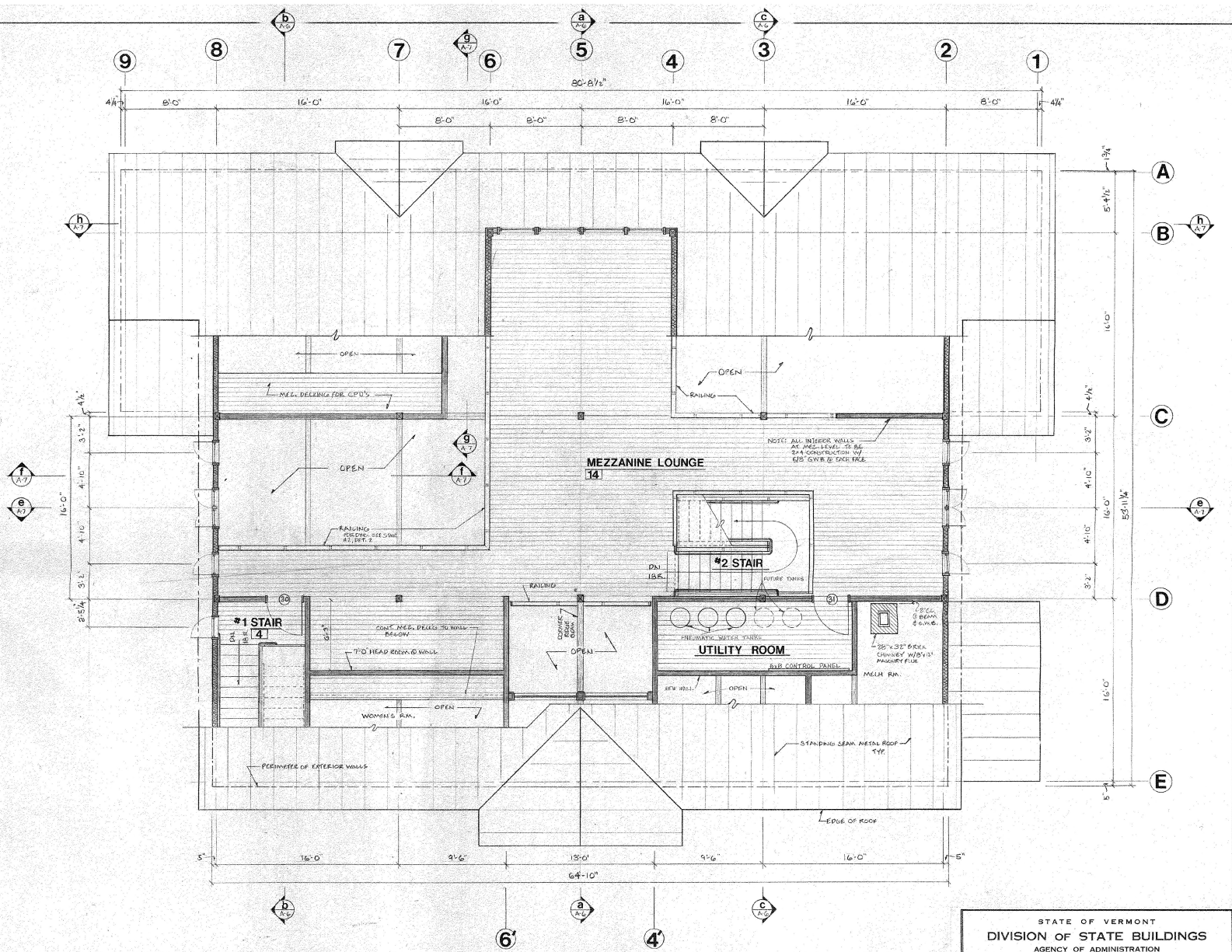
STATE OF VERMONT
 DIVISION OF STATE BUILDINGS
 AGENCY OF ADMINISTRATION
 MONTPELIER, VERMONT

RUTLAND TERMINAL BUILDING AIR 23-2024
FIRST FLOOR PLAN
 RUTLAND STATE AIRPORT
 CLARENDON, VERMONT

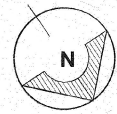
DATE: 6/8/24	SCALE: 1/2" = 1'-0"	REVISIONS:	DWG. NO. A-2Ref.
DRAWN BY: [Signature]	APPROVED BY: [Signature]		5 of 19

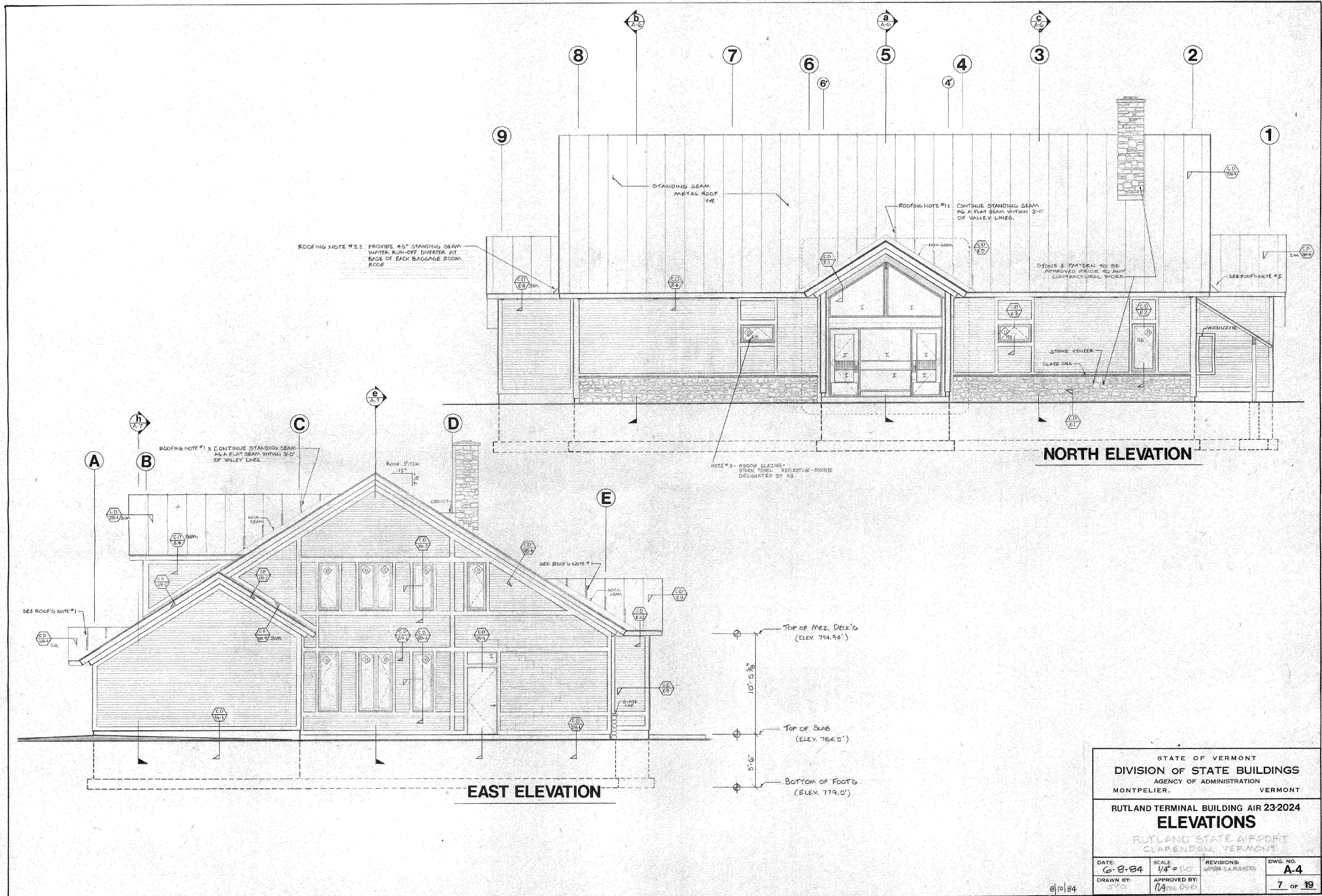


8/19/24



STATE OF VERMONT DIVISION OF STATE BUILDINGS AGENCY OF ADMINISTRATION MONTPELIER, VERMONT			
RUTLAND TERMINAL BUILDING AIR 23-2024			
MEZZANINE PLAN			
RUTLAND STATE AIRPORT CLARENDON, VERMONT			
DATE: 6-8-84	SCALE: 1/4" = 1'-0"	REVISIONS: 6/27/84 S.A. MULHERRA	DWG. NO. A-3
DRAWN BY: JFO	APPROVED BY: BJ	REV. DSG	6 OF 19



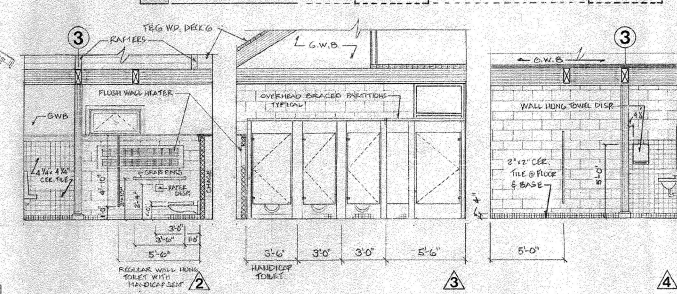
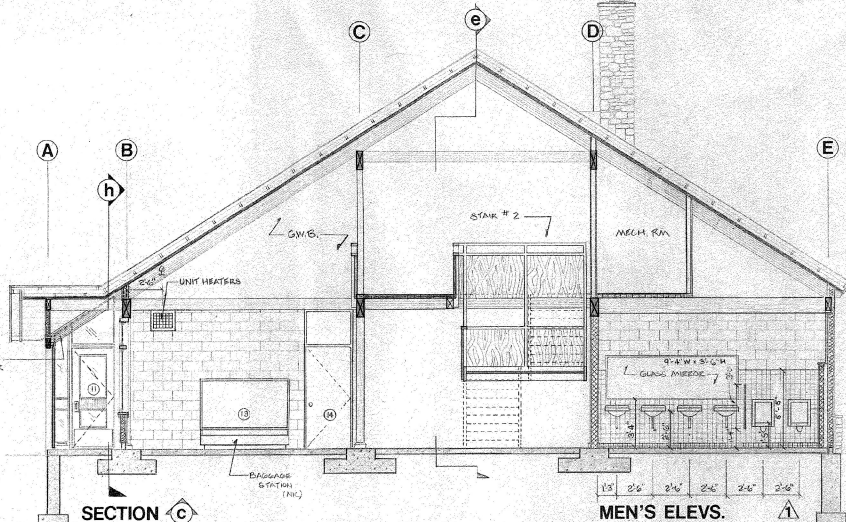
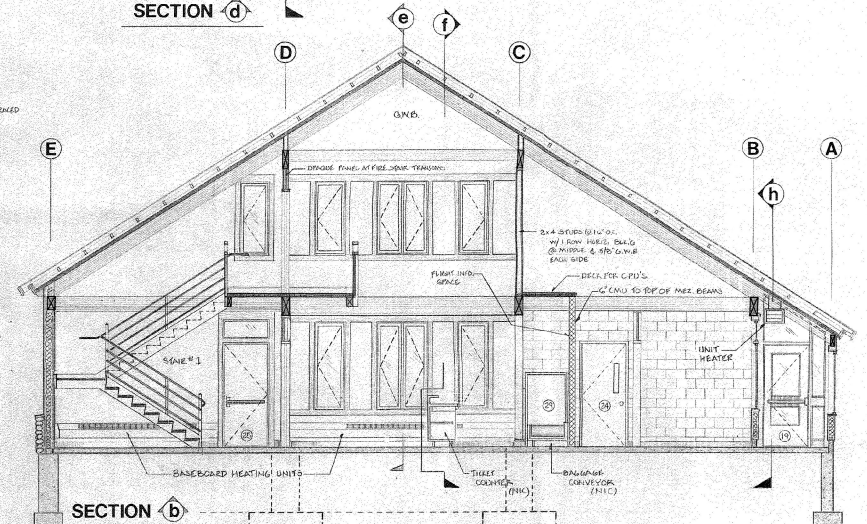
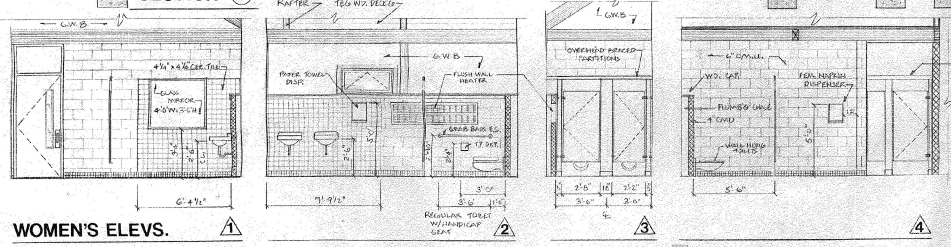
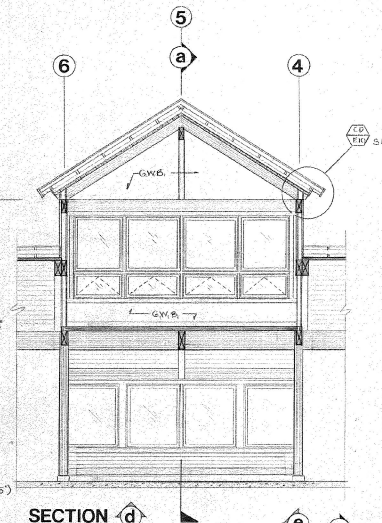
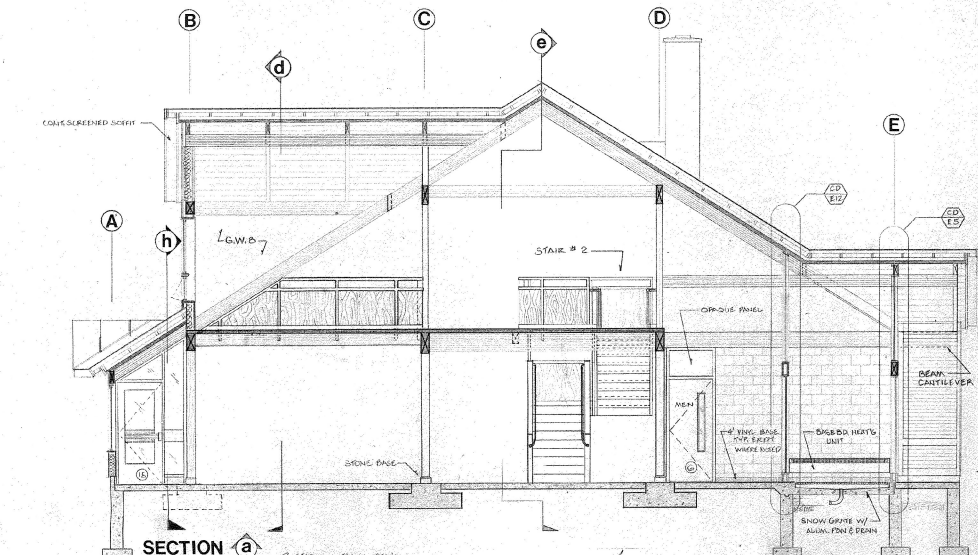


NORTH ELEVATION

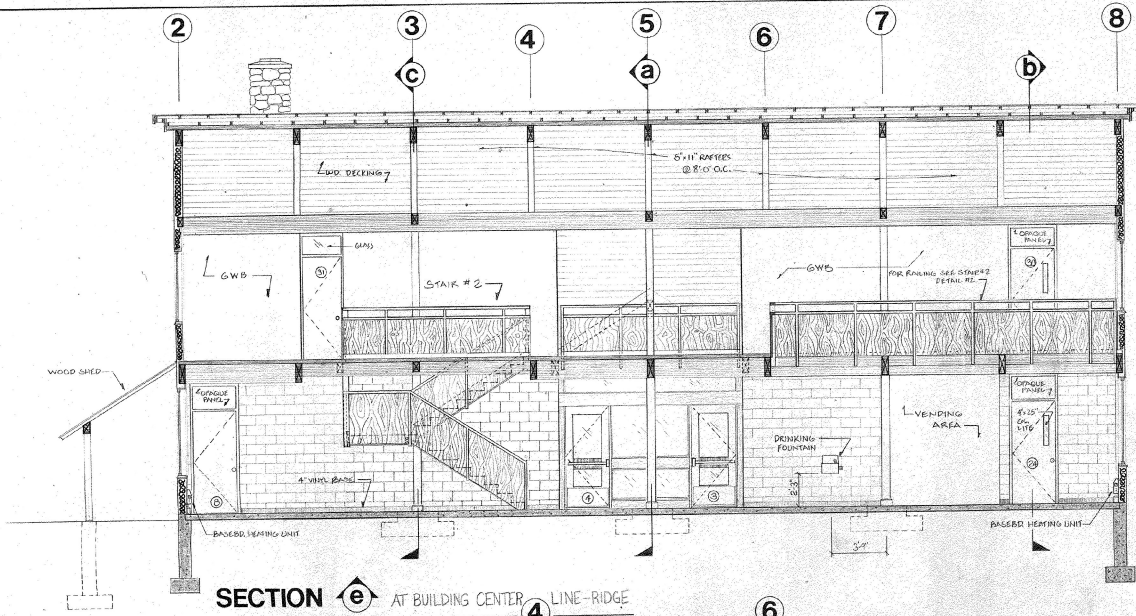
EAST ELEVATION

STATE OF VERMONT			
DIVISION OF STATE BUILDINGS			
AGENCY OF ADMINISTRATION			
MONTPELIER, VERMONT			
RUTLAND TERMINAL BUILDING AIR 23-2024			
ELEVATIONS			
RUTLAND STATE AIRPORT			
CLARENDON, VERMONT			
DATE: 8-84	SCALE: 1/4" = 1'-0"	REVISIONS: 4/10/88 S.A. WILSON	DWG. NO. A-4
DRAWN BY: S.P.	APPROVED BY: R.A. 10/84		7 of 19

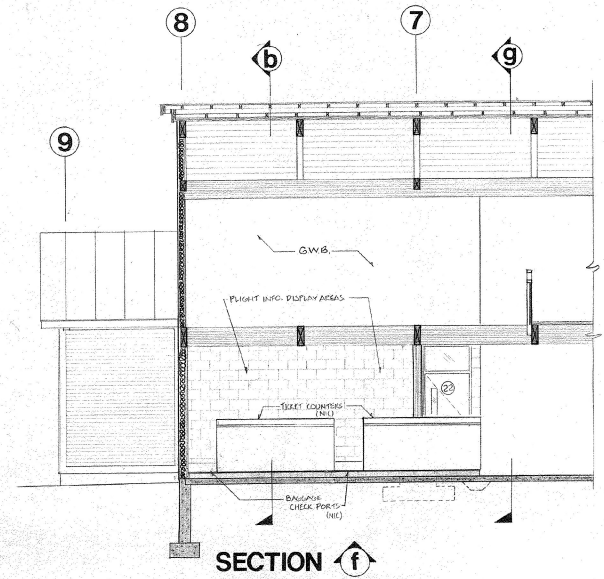
10/84



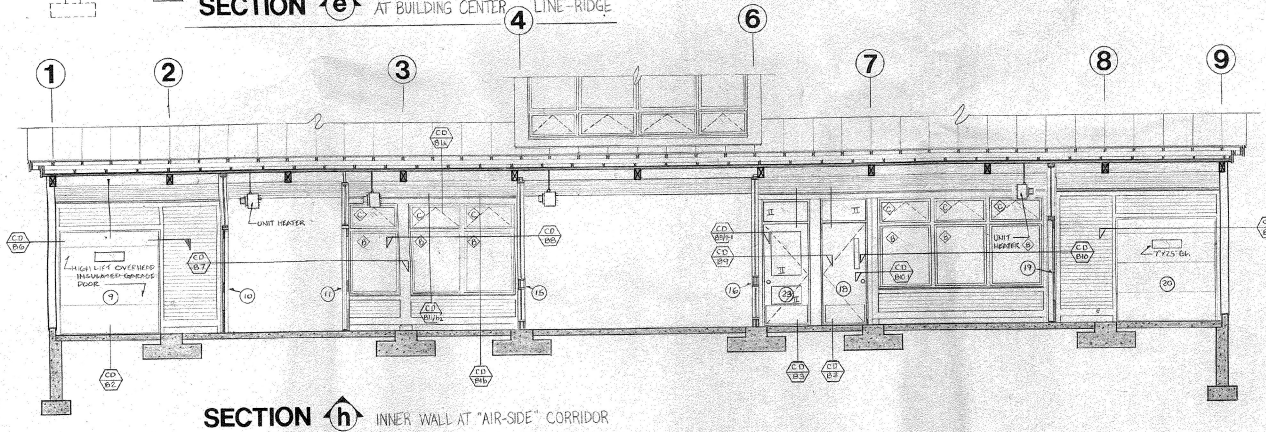
STATE OF VERMONT			
DIVISION OF STATE BUILDINGS			
AGENCY OF ADMINISTRATION			
MONTPELIER.		VERMONT	
RUTLAND TERMINAL BUILDING AIR 23/2024			
SECTIONS/INT. ELEV.			
RUTLAND STATE AIRPORT			
CLARENDON, VERMONT			
DATE	SCALE	REVISIONS	DWG. NO.
6-8-84	1/8" = 1'-0"		A-6
DRAWN BY	APPROVED BY		
SFD	LDJ		9 OF 19



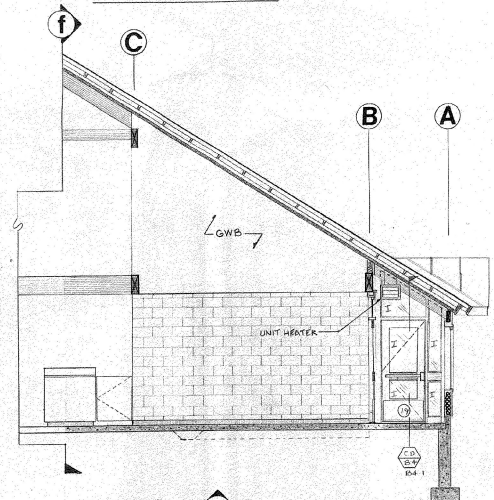
SECTION e AT BUILDING CENTER LINE-RIDGE



SECTION f



SECTION h INNER WALL AT "AIR-SIDE" CORRIDOR



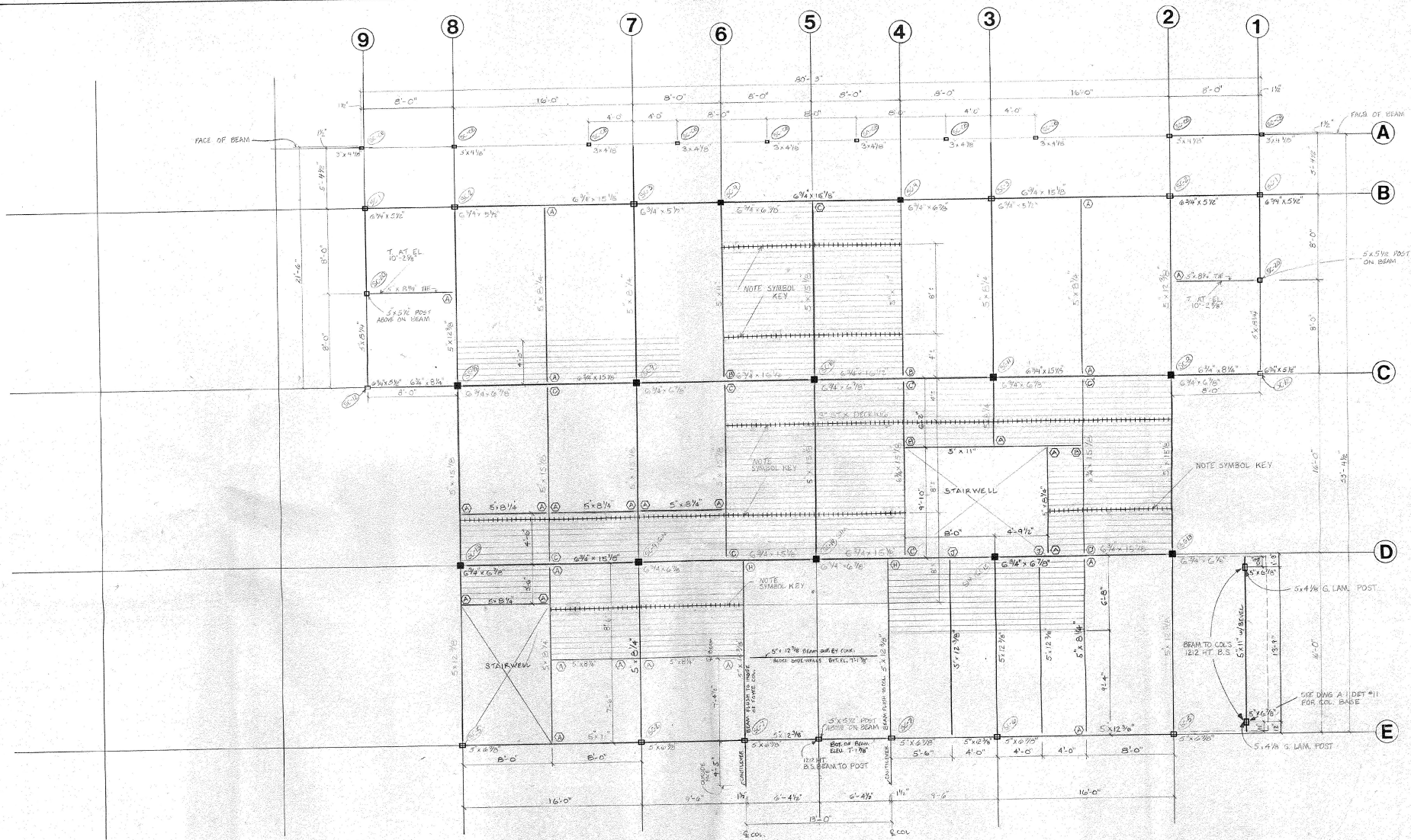
SECTION g

STATE OF VERMONT
 DIVISION OF STATE BUILDINGS
 AGENCY OF ADMINISTRATION
 MONTPELIER, VERMONT

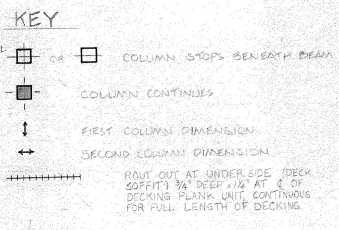
RUTLAND TERMINAL BUILDING - AIR 23-2024
 SECTIONS/INT. ELEV.
 RUTLAND STATE AIRPORT
 CLARENDON, VERMONT

DATE:	SCALE:	REVISIONS:	DWG. NO.
6-8-84	1/4" = 1'-0"	6/21/84 S.A. MULHERN	A-7
DRAWN BY: JPC	APPROVED BY: JA FOR DSP		10 OF 19

g/w/87



NOTE: 1" TOP OF ALL BEAMS AT 10'-2 3/8" EXCEPT AS NOTED AT ENTRANCE (15'-0" SPAN)
 * 2" FOR CONNECTIONS (S-D, ETC.) - SEE STRUCTURAL CONNECTION DETAIL DWGS. SERIES SC-1 TO SC-21 (S-C-22, SCHEDULE OF BEAM TO BEAM OR JOIST CONNECTIONS FOR (A) & (C) ETC. DESIGNATED)
 * 3" STANDARD CONNECTIONS (E.G. 1212 HT, BBL, HST, 1212, 1212E, 1212L, ETC.) AS INDICATED BY THE SIMPSON CO. - STRONG-TIE

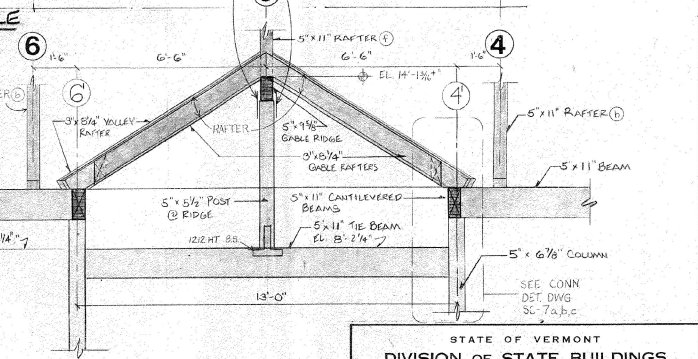
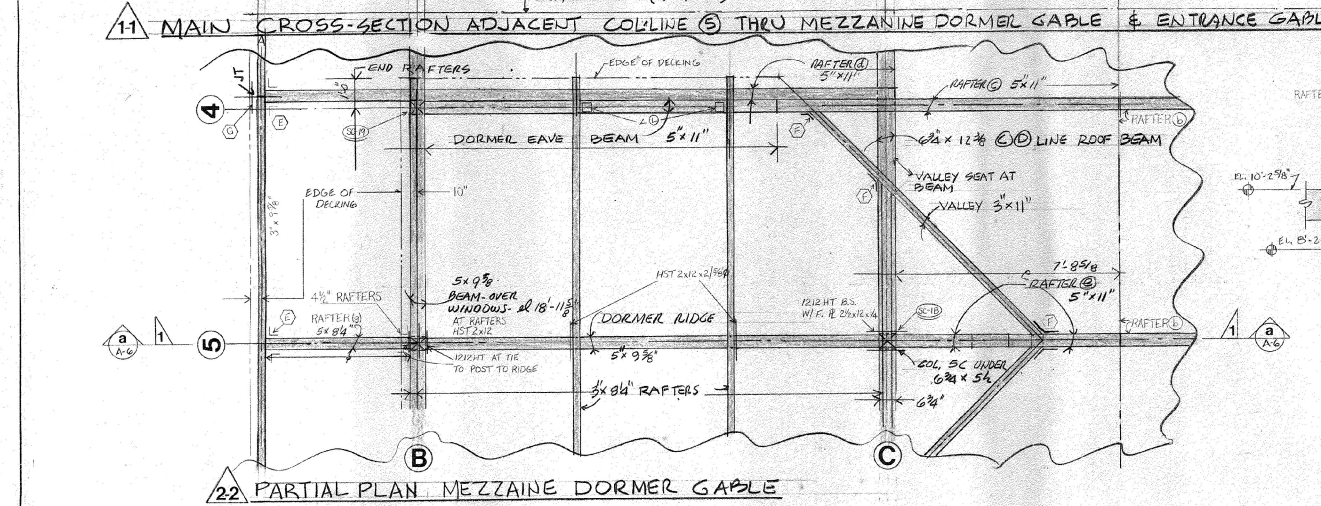
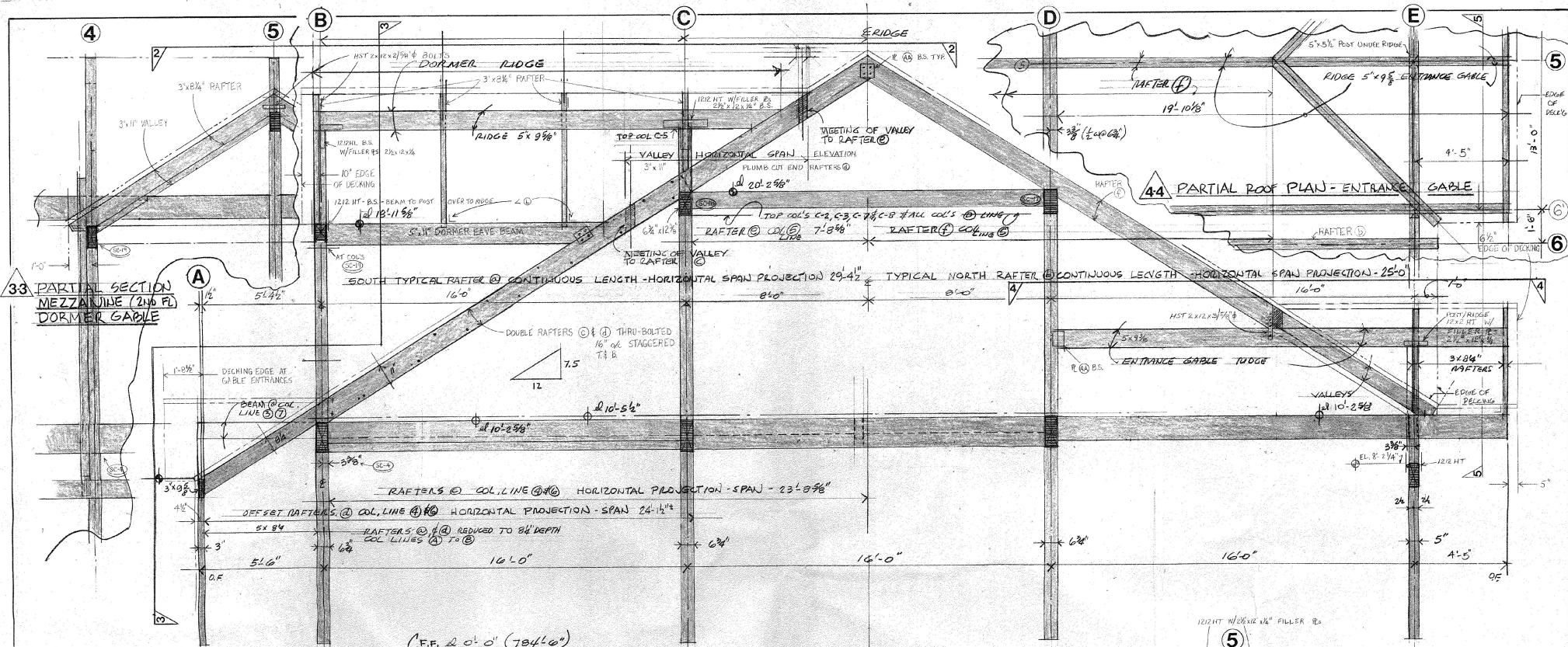


STATE OF VERMONT
 DIVISION OF STATE BUILDINGS
 AGENCY OF ADMINISTRATION
 MONTPELIER, VERMONT

RUTLAND TERMINAL BUILDING AIR 23-2024
MEZZANINE FRAMING
 RUTLAND STATE AIRPORT
 CLARENDON, VERMONT

DATE: 6-8-84	SCALE: 1/8" = 1'-0"	REVISIONS: 7/20/84, S.A. MULHLEN	DWG. NO. SF-1
DRAWN BY: S.F.C.	APPROVED BY: R.S. FORAN, P.E.	11 OF 19	

6/10/84



22 PARTIAL PLAN MEZZANINE DORMER GABLE

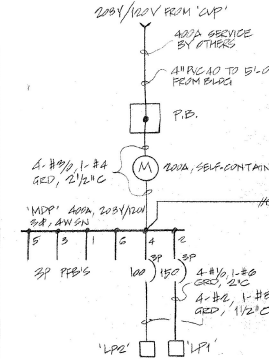
55 PARTIAL SECTION @ ENTRANCE GABLE

STATE OF VERMONT DIVISION OF STATE BUILDINGS AGENCY OF ADMINISTRATION MONTPELIER, VERMONT			
RUTLAND TERMINAL BUILDING AIR 23-2024 FRAMING X-SECTIONS RUTLAND STATE AIRPORT CLARENDON, VERMONT			
DATE: 2/6/24	SCALE: 1/2" = 1'-0"	REVISIONS: 1/10/24 S.AMBLER	DWG. NO. SF-3
DESIGNED BY: R.A. / SFD	APPROVED BY: A. S. / SFD		13 OF 19

8/10/24

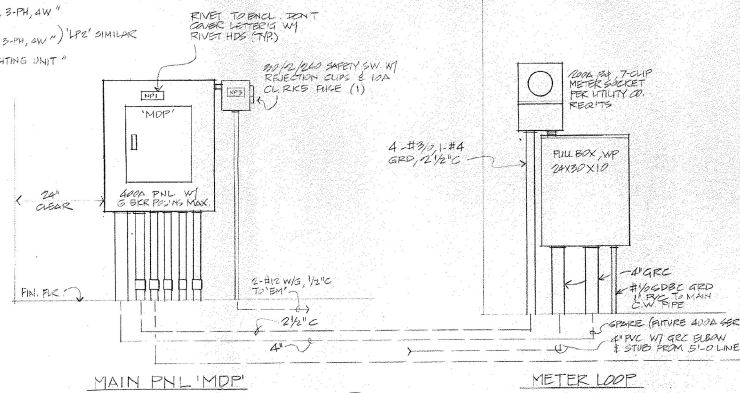
TYPE	DESCRIPTION	LUMENS	EQUIV TO
A	FLUORESCENT 2-LAMP W/40-AROUND WITH PRISMATIC ACRYLIC DIFFUSER	2-4400W	LITHONIA SC240
B	OPEN		
C	SIMILAR TO 'A', 4 LAMPS	4-4400W	LITHONIA SC480
D	FLUORESCENT 24 X 48 SURFACE WITH 4 LAMPS, 1/2 X 1/2 1/2 ALUM. EGROGATE DIFFUSION, PAINT AS DIRTD	4-4400W	DAY-BRITE "DAY-LINE"
E	SIMILAR TO 'D', 24 X 48, 2-LAMP	2-4400W	
F	SAME AS 'E', BUT WITH 2 SINGLE LAMP BALLASTS		
G	FLUORESCENT OPEN STRIP, 2-LAMP	2-4400W	LITHONIA C140
H	FLUORESCENT OPEN STRIP, 1-LAMP	1-4400W	LITHONIA C240

I	WALL MOUNTED SINGLE-LAMP FLOOR. METAL HOUSING, BRONZE FIN.	1-4400W	LIGHTOLIER C04-481
J	SAME AS 'I', BUT WITH LG-TEMP BALLASTS		
K	SIMILAR TO 'I', BUT 8 FT LONG	2-4400W	LIGHTOLIER C04-481
L	WALL-MOUNTED SINGLE-LAMP FLOOR. OPAL ACRYLIC W/40-AROUND DIFF'R	1-4400W	PRESCOLITE 3087
M	EXTERIOR INCAN. WALL BRACKET, 4 IN. DIA., BRONZE FIN.	A19 91W 130W PL	PRESCOLITE 1165-263
N	INCAN. PENDANT 6-IN. CYLINDER BRONZE FIN.	PAR-38 75W	PRESCOLITE 1165-263
O	FLUORESCENT SINGLE-LAMP VANDAL PROOF, FULLY GLOBE LIT	1-4400W	KENALL 7100
P	SAME AS 'O' BUT WITH LG-TEMP BALLAST		

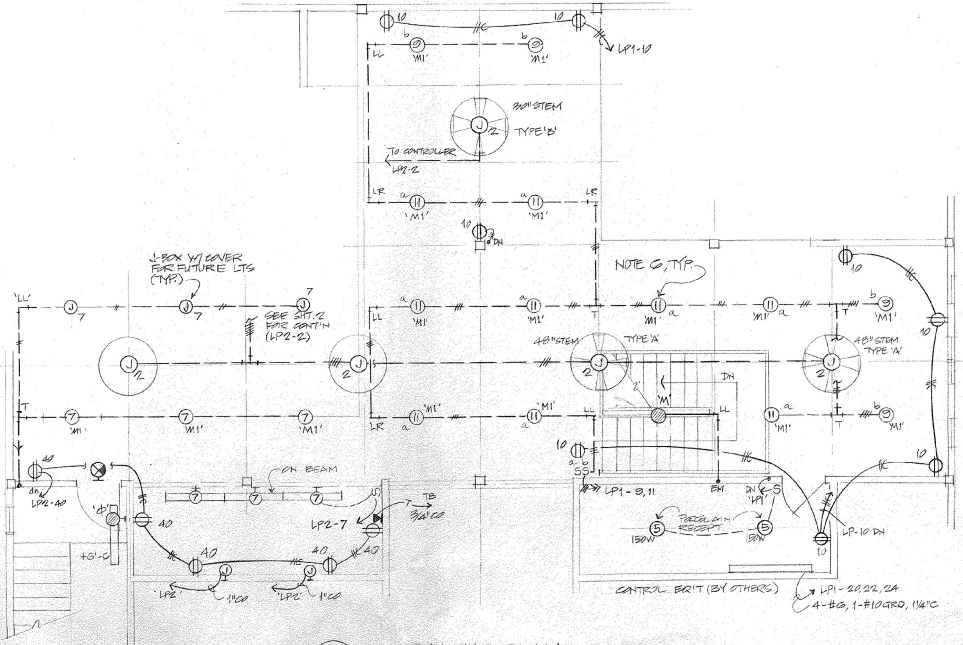


2 SINGLE-LINE DIAG. NO SCALE

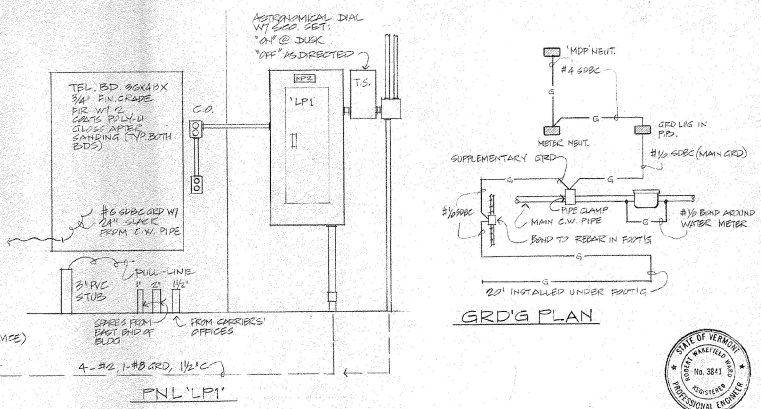
NAME PLATES:
 FLUORESCENT LUMINATE YELLOW W/ BLACK LETTERS
 N#1 "PANEL 'MDP'"
 400A 120V/200V, 3-PM, 4W"
 N#2 "PANEL 'LPI'"
 100A 120V/200V, 3-PM, 4W"
 L#2 SIMILAR
 N#3 "EMERGENCY LIGHTING UNIT"



1 EQ'T ELEVATIONS SCALE: 3/4"=1'-0"



2 MEZZANINE PLAN SCALE: 1/4"=1'-0"



GRD'G PLAN

SYMBOL LEGEND

- Branch circuits concealed in ceiling or wall, 2 No. 12 wires in raceway unless otherwise noted. Push notes indicate number of wires when more than two.
- Branch circuit as above concealed in floor or ground.
- Branch circuit as above exposed.
- Auxiliary circuit (T = telephone, S = sound, &c).
- Home run to panelboard or cabinet (No. of arrows = No. of circuits).
- Fluorescent light fixture, ceiling mounted, with circuit number inside and type designation outside.
- Fluorescent fixture, wall mounted, as above.
- Fluorescent strip fixture, ceiling mounted, as above.
- Fluorescent strip fixture, wall mounted, as above.
- Incandescent fixture, ceiling mounted, as above. FC = FULL CIRCLE.
- Incandescent fixture, wall mounted, as above.
- Exit light, ceiling mounted, directional arrows as required.
- Exit light, wall mounted. FACE INDICATED SELF ILLUMINATED.
- Junction box installed in floor or ceiling.
- Junction box installed in wall.
- Dishes, convenience outlet, 20, 3W grounding type. 4-1/2" x 1 1/2".
- Dishes outlet as shown (SPLIT W/OUTLET).
- Convenience outlet installed in floor.
- Special purpose outlet, rating as noted.
- Clock outlet.
- Telephone outlet.
- Telephone outlet installed in floor.
- Wall switch, single-pole (P = pilot light). +48" x 1 1/2".
- Wall switch, double-pole.
- Wall switch, three-way (L = 4-way).
- Dimmer, rating as noted.
- Panelboard, power.
- Panelboard or load center; lighting.
- Telephone cabinet.
- Electric Motor with HP noted.
- Fractional HP motor less than 1/8 HP.
- Safety switch, HP-rated, non-fusible unless otherwise noted.
- Magnetic motor starter, across-the-line unless otherwise noted.
- Manual motor starter.
- Day-type transformer, rating as noted.
- Fire alarm pull station.
- Fire alarm bell with bell diameter noted.
- Fire alarm annunciator panel.
- Fire alarm control cabinet.
- Fire alarm detector, temperature type.
- Fire alarm detector, smoke type.
- Signal outlet installed in ceiling (I = intercom, S = speaker, TV = television, M = microphone, PA = public address, V = volume control).
- Signal outlet installed in floor.
- Signal outlet installed in wall.
- Bell.
- Buzzer.
- Push button.
- STAT, PROVIDED BY MFG.

CELLS FAN, CONTINUOUS PROVIDED TYPE 'B' 30" HUNTER 22217/02200 TYPE 'B' 30" HUNTER 22217/02200 COMPLETE W/ VARIABLE SPEED CONTROL

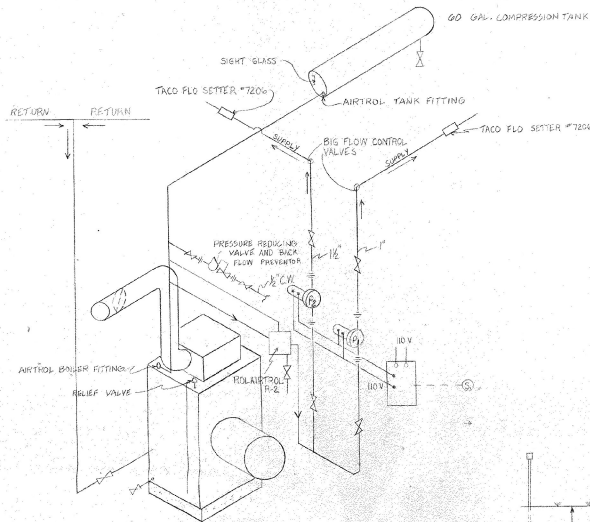
STATE OF VERMONT
 DIVISION OF STATE BUILDINGS
 AGENCY OF ADMINISTRATION
 MONTEPELLIER, VERMONT

RUTLAND TERMINAL BUILDING AIR 23-2024
MEZZ. ELEC. PLAN & DETS.
 RUTLAND STATE AIRPORT
 CLARENDON, VERMONT

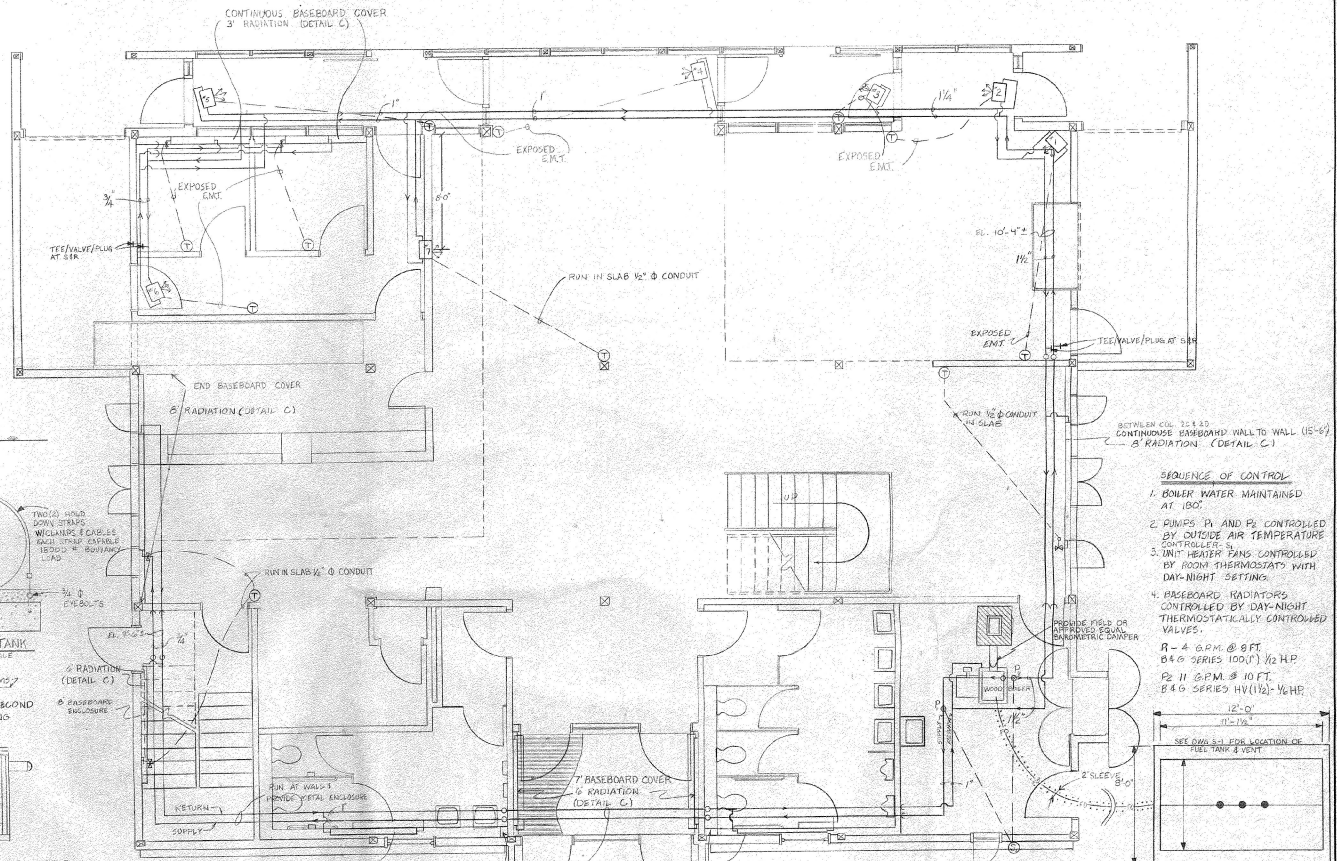
DATE: JUNE 21, 1984	SCALE: AS NOTED	REVISIONS:	DWG. NO. E-1
DRAWN BY: BARR DUFF	APPROVED BY: BARR DUFF		14 OF 19



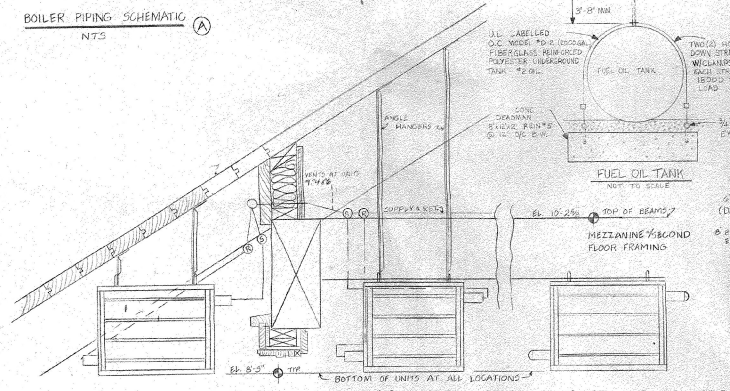
VOLTS 200/120		MAIN BRK		FLOOR BOTTOM		TOP	
PHASE		L1 USE ONLY		TYPE: SURFACE		TYPE: FLUSH	
NEUTRAL 24		BRK TYPE 00		TYPE: PANELS		LOAD CTR	
BUS 222BA		BRK A, L, C		ROOM: WITH		WITHOUT	
PANEL 'LP1'							
CIR NO.	LOAD	LOAD VOLT-AMPERES			CIR NO.	LOAD	CIR NO.
		L1	L2	L3			
1	L1 LG	200	200	200	2	CLC (TEL)	2
2	1 (DRY ON T.S.)	200	200	200	3	CLC	3
3	2	200	200	200	4	CLC	4
4	3	200	200	200	5	CLC	5
5	4	200	200	200	6	CLC	6
6	5	200	200	200	7	CLC	7
7	6	200	200	200	8	CLC	8
8	7	200	200	200	9	CLC	9
9	8	200	200	200	10	CLC	10
10	9	200	200	200	11	CLC	11
11	10	200	200	200	12	CLC	12
12	11	200	200	200	13	CLC	13
13	12	200	200	200	14	CLC	14
14	13	200	200	200	15	CLC	15
15	14	200	200	200	16	CLC	16
16	15	200	200	200	17	CLC	17
17	16	200	200	200	18	CLC	18
18	17	200	200	200	19	CLC	19
19	18	200	200	200	20	CLC	20
20	19	200	200	200	21	CLC	21
21	20	200	200	200	22	CLC	22
22	21	200	200	200	23	CLC	23
23	22	200	200	200	24	CLC	24
24	23	200	200	200	25	CLC	25
25	24	200	200	200	26	CLC	26
26	25	200	200	200	27	CLC	27
27	26	200	200	200	28	CLC	28
28	27	200	200	200	29	CLC	29
29	28	200	200	200	30	CLC	30
30	29	200	200	200	31	CLC	31
31	30	200	200	200	32	CLC	32
32	31	200	200	200	33	CLC	33
33	32	200	200	200	34	CLC	34
34	33	200	200	200	35	CLC	35
35	34	200	200	200	36	CLC	36
36	35	200	200	200	37	CLC	37
37	36	200	200	200	38	CLC	38
38	37	200	200	200	39	CLC	39
39	38	200	200	200	40	CLC	40
40	39	200	200	200	41	CLC	41
41	40	200	200	200	42	CLC	42
42	41	200	200	200	43	CLC	43
43	42	200	200	200	44	CLC	44
44	43	200	200	200	45	CLC	45
45	44	200	200	200	46	CLC	46
46	45	200	200	200	47	CLC	47
47	46	200	200	200	48	CLC	48
48	47	200	200	200	49	CLC	49
49	48	200	200	200	50	CLC	50
50	49	200	200	200	51	CLC	51
51	50	200	200	200	52	CLC	52
52	51	200	200	200	53	CLC	53
53	52	200	200	200	54	CLC	54
54	53	200	200	200	55	CLC	55
55	54	200	200	200	56	CLC	56
56	55	200	200	200	57	CLC	57
57	56	200	200	200	58	CLC	58
58	57	200	200	200	59	CLC	59
59	58	200	200	200	60	CLC	60
60	59	200	200	200	61	CLC	61
61	60	200	200	200	62	CLC	62
62	61	200	200	200	63	CLC	63
63	62	200	200	200	64	CLC	64
64	63	200	200	200	65	CLC	65
65	64	200	200	200	66	CLC	66
66	65	200	200	200	67	CLC	67
67	66	200	200	200	68	CLC	68
68	67	200	200	200	69	CLC	69
69	68	200	200	200	70	CLC	70
70	69	200	200	200	71	CLC	71
71	70	200	200	200	72	CLC	72
72	71	200	200	200	73	CLC	73
73	72	200	200	200	74	CLC	74
74	73	200	200	200	75	CLC	75
75	74	200	200	200	76	CLC	76
76	75	200	200	200	77	CLC	77
77	76	200	200	200	78	CLC	78
78	77	200	200	200	79	CLC	79
79	78	200	200	200	80	CLC	80
80	79	200	200	200	81	CLC	81
81	80	200	200	200	82	CLC	82
82	81	200	200	200	83	CLC	83
83	82	200	200	200	84	CLC	84
84	83	200	200	200	85	CLC	85
85	84	200	200	200	86	CLC	86
86	85	200	200	200	87	CLC	87
87	86	200	200	200	88	CLC	88
88	87	200	200	200	89	CLC	89
89	88	200	200	200	90	CLC	90
90	89	200	200	200	91	CLC	91
91	90	200	200	200	92	CLC	92
92	91	200	200	200	93	CLC	93
93	92	200	200	200	94	CLC	94
94	93	200	200	200	95	CLC	95
95	94	200	200	200	96	CLC	96
96	95	200	200	200	97	CLC	97
97	96	200	200	200	98	CLC	98
98	97	200	200	200	99	CLC	99
99	98	200	200	200	100	CLC	100
100	99	200	200	200	101	CLC	101
101	100	200	200	200	102	CLC	102
102	101	200	200	200	103	CLC	103
103	102	200	200	200	104	CLC	104
104	103	200	200	200	105	CLC	105
105	104	200	200	200	106	CLC	106
106	105	200	200	200	107	CLC	107
107	106	200	200	200	108	CLC	108
108	107	200	200	200	109	CLC	109
109	108	200	200	200	110	CLC	110
110	109	200	200	200	111	CLC	111
111	110	200	200	200	112	CLC	112
112	111	200	200	200	113	CLC	113
113	112	200	200	200	114	CLC	114
114	113	200	200	200	115	CLC	115
115	114	200	200	200	116	CLC	116
116	115	200	200	200	117	CLC	117
117	116	200	200	200	118	CLC	118
118	117	200	200	200	119	CLC	119
119	118	200	200	200	120	CLC	120
120	119	200	200	200	121	CLC	121
121	120	200	200	200	122	CLC	122
122	121	200	200	200	123	CLC	123
123	122	200	200	200	124	CLC	124
124	123	200	200	200	125	CLC	125
125	124	200	200	200	126	CLC	126
126	125	200	200	200	127	CLC	127
127	126	200	200	200	128	CLC	128
128	127	200	200	200	129	CLC	129
129	128	200	200	200	130	CLC	130
130	129	200	200	200	131	CLC	131
131	130	200	200	200	132	CLC	132
132	131	200	200	200	133	CLC	133
133	132	200	200	200	134	CLC	134
134	133	200	200	200	135	CLC	135
135	134	200	200	200	136	CLC	136
136	135	200	200	200	137	CLC	137
137	136	200	200	200	138	CLC	138
138	137	200	200	200	139	CLC	139
139	138	200	200	200	140	CLC	140
140	139	200	200	200	141	CLC	141
141	140	200	200	200	142	CLC	142
142	141	200	200	200	143	CLC	143
143	142	200	200	200	144	CLC	144
144	143	200	200	200	145	CLC	145
145	144	200	200	200	146	CLC	146
146	145	200	200	200	147	CLC	147
147	146	200	200	200	148	CLC	148
148	147	200	200	200	149	CLC	149
149	148	200	200	200	150	CLC	150
150	149	200	200	200	151	CLC	151
151	150	200	200	200	152	CLC	152
152	151	200	200	200	153	CLC	153
153	152	200	200	200	154	CLC	154
154	153	200	200	200	155	CLC	155
155	154	200	200	200	156	CLC	156
156	155	200	200	200	157	CLC	157
157	156	200	200	200	158	CLC	158
158	157	200	200	200	159	CLC	159
159	158	200	200	200	160	CLC	



BOILER PIPING SCHEMATIC
NTS



- SEQUENCE OF CONTROL**
1. BOILER WATER MAINTAINED AT 180°.
 2. PUMPS P1 AND P2 CONTROLLED BY OUTSIDE AIR TEMPERATURE CONTROLLER.
 3. UNIT HEATER FANS CONTROLLED BY ROOM THERMOSTATS WITH DAY-NIGHT SETTING.
 4. BASEBOARD RADIATORS CONTROLLED BY DAY-NIGHT THERMOSTATICALLY CONTROLLED VALVES.
- P1 = 4" O.D.M. @ 9 FT. B4G SERIES 100U) 1/2 HP
 P2 = 11" S.P.M. @ 10 FT. B4G SERIES 110U) 1/2 HP



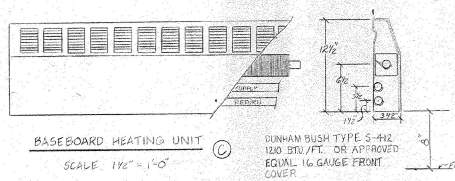
UNITS #2, #3, #4, #5 HUNG FROM DECK
 #6 ALL OTHERS GOING TO AND FROM UNIT. HEATERS ARE TO BE INSULATED. INSTALL AUTOMATIC AIR VENTS AT ALL HIGH POINTS.

UNITS #6 & 7 HUNG FROM DECK

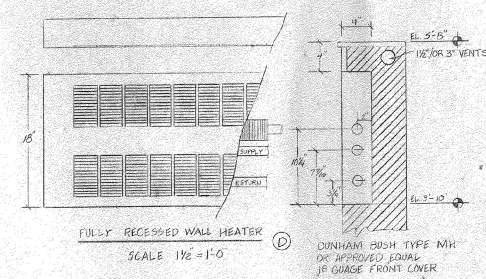
UNIT #7 THRU WALL UNIT

HEATING DETAIL
SCALE 1/2" = 1'-0"

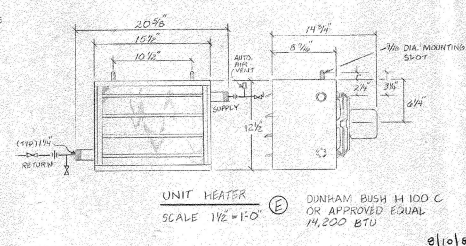
HEATING PLAN
SCALE 1/4" = 1'-0"



BASEBOARD HEATING UNIT
SCALE 1/2" = 1'-0"



FULLY RECESSED WALL HEATER
SCALE 1/2" = 1'-0"



UNIT HEATER
SCALE 1/2" = 1'-0"

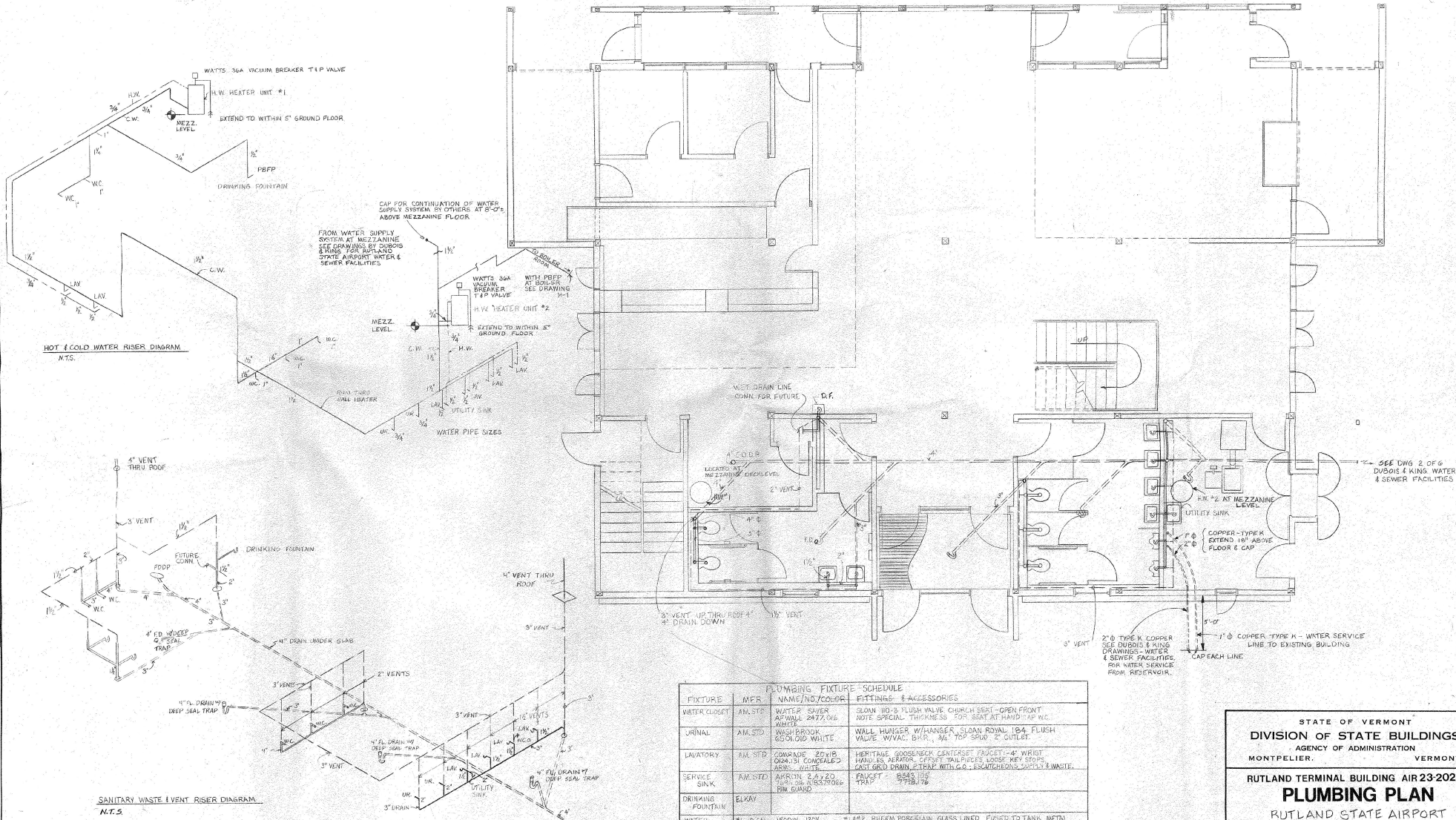
STATE OF VERMONT
 DIVISION OF STATE BUILDINGS
 AGENCY OF ADMINISTRATION
 MONTPELIER, VERMONT

RUTLAND TERMINAL BUILDING AIR 23-2024

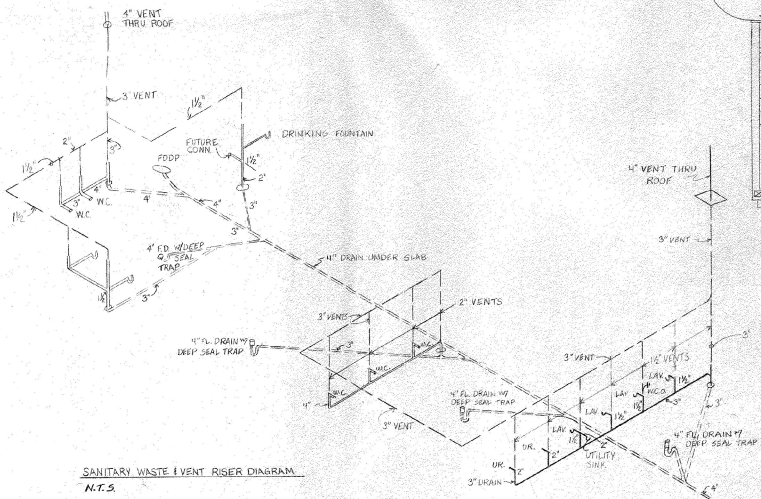
HEATING PLAN
 RUTLAND STATE AIRPORT
 CLARENDON, VERMONT

DATE: 2/8/59	SCALE: AS NOTED	REVISIONS: 4/27/54 S.A. RUGGIERI	DWG. NO. H-1
DRAWN BY: R. TETREULT	APPROVED BY: J.A. FOR B.S.D.		16 OF 19

110104



HOT & COLD WATER RISER DIAGRAM
N.T.S.



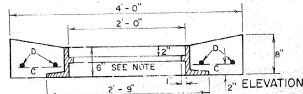
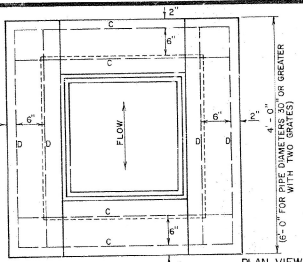
SANITARY WASTE & VENT RISER DIAGRAM
N.T.S.

FIXTURE	MFR.	PLUMBING FIXTURE SCHEDULE	FINISHES & ACCESSORIES
WATER CLOSET	AML STD.	WATER CLOSET	FINISH: 100-3 FLUSH VALVE CHROME SEAT - OPEN FRONT NOTE: SPECIAL THICKNESS FOR SEAT AT HAND - AF N.C.
URINAL	AML STD.	WASH SINK	WALL HANGER W/HANGER SLOAN ROYAL 104 FLUSH VALVE W/VAC. B.H.R., 94" TOP SPRD 2" OUTLET
LAVATORY	AML STD.	WASH SINK	HERITAGE GOOSENECK CENTERSET FAUCET - 4" WRIST HAND-ON AERATOR, OFFSET TAILPIECE, LOOSE KEY STOPS CAST BRASS, 1/2" NPT, 1/2" G.O., 1/2" NPT, 1/2" G.O., 1/2" NPT, 1/2" G.O.
SERVICE SINK	AML STD.	WASH SINK	FAUCET - 8543 1/2" TRAP - 7738 1/2"
DRINKING FOUNTAIN	ELKAY	WATER HEATER	#1: 0.5AL. 1500W 120V #2: 305AL. 4500W 230V
WATER HEATER			#1: #2: RIFURM PORCELAIN, GLASS LINED FUSED TO TANK, METAL FOAM INSULATION, GASKED RUBBER, FINISH AND/OR FROGS IN SEPARATE TABLE; PROVIDE RELIEF VALVE AND DRAIN VALVE THERMOSTAT SET 120°F.

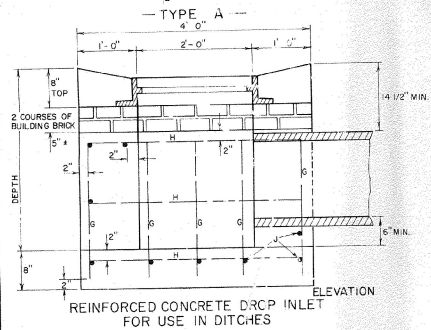
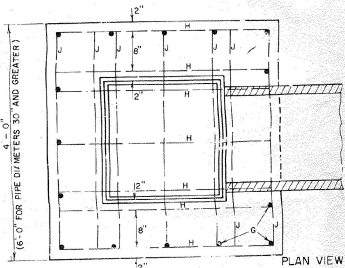
STATE OF VERMONT
DIVISION OF STATE BUILDINGS
AGENCY OF ADMINISTRATION
MONTPELIER, VERMONT

RUTLAND TERMINAL BUILDING AIR 23-2024
PLUMBING PLAN
RUTLAND STATE AIRPORT
CLARENDON, VERMONT

DATE: 6/8/84	SCALE: 1/4" = 1'-0"	REVISIONS: RBS/SA MUSHKIN	DWG. NO. P-1
DRAWN BY: RBT	APPROVED BY: M FOR DSD		17 OF 19



NOTE—FRAME SHOWN IS FOR TYPE A GRATE, SEE SHEET D-11. FOR TYPE B GRATE AND FRAME, SEE SHEET D-16. (REGARDING PIPE FRAME DEPTH DIMENSION SHALL BE 6")
TOP FOR REINFORCED CONCRETE DROP INLET WITH GRATE FOR USE IN DITCHES



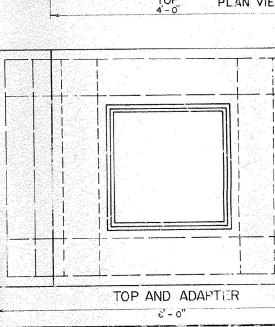
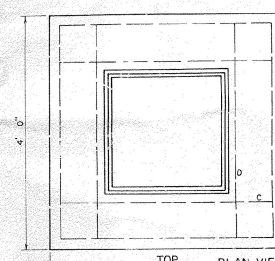
REINFORCED CONCRETE DROP INLET FOR USE IN DITCHES

STEEL SCHEDULE																	
4'x4' DROP INLET TYPE A				4'x6' DROP INLET WITH TWO GRATES TYPE B				TYPE C				4'x6' DROP INLET WITH ONE GRATE WITH 4'x6' TOP					
12', 15', 18', 24'		30', 36'		30', 36'		30', 36'		30', 36'		30', 36'		30', 36'		30', 36'			
DEPTH	G	LENGTH	H	LENGTH	C, D	LENGTH	G	LENGTH	H	LENGTH	J	LENGTH	C	LENGTH	D	LENGTH	DEPTH
3'-0"	15	2'-3"	22	3'-8"	8	3'-0"											3'-0"
3'-6"	15	2'-9"	22	3'-8"	8	3'-8"											3'-6"
4'-0"	15	3'-3"	23	3'-8"	8	3'-8"	17	3'-3"	19	3'-8"	10	5'-8"	4	3'-8"	4	5'-8"	4'-0"
4'-6"	15	3'-9"	23	3'-8"	8	3'-8"	17	3'-9"	19	3'-8"	10	5'-8"	4	3'-8"	4	5'-8"	4'-6"
5'-0"	15	4'-3"	23	3'-8"	8	3'-8"	17	4'-3"	23	3'-8"	13	5'-8"	4	3'-8"	4	5'-8"	5'-0"
5'-6"	15	4'-9"	23	3'-8"	8	3'-8"	17	4'-9"	23	3'-8"	13	5'-8"	4	3'-8"	4	5'-8"	5'-6"
6'-0"	15	5'-3"	23	3'-8"	8	3'-8"	17	5'-3"	23	3'-8"	13	5'-8"	4	3'-8"	4	5'-8"	6'-0"
6'-6"	15	5'-9"	23	3'-8"	8	3'-8"	17	5'-9"	23	3'-8"	13	5'-8"	4	3'-8"	4	5'-8"	6'-6"
7'-0"	15	6'-3"	23	3'-8"	8	3'-8"	17	6'-3"	23	3'-8"	13	5'-8"	4	3'-8"	4	5'-8"	7'-0"
7'-6"	15	6'-9"	23	3'-8"	8	3'-8"	17	6'-9"	23	3'-8"	13	5'-8"	4	3'-8"	4	5'-8"	7'-6"
8'-0"	15	7'-3"	23	3'-8"	8	3'-8"	17	7'-3"	23	3'-8"	13	5'-8"	4	3'-8"	4	5'-8"	8'-0"

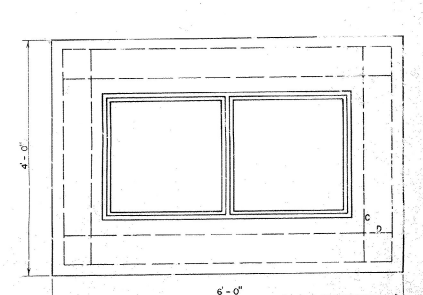
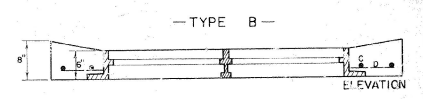
STEEL AND CONCRETE QUANTITIES																								
4'x4' DROP INLET				4'x6' DROP INLET WITH TWO GRATES				4'x6' DROP INLET WITH ONE GRATE WITH 4'x6' TOP				STEEL SCHEDULE TYPE D												
12', 15', 18', 24'		30'		36'		30'		36'		30'		36'		30'		36'								
DEPTH	CONCRETE C.Y.	STEEL LBS.	CONCRETE C.Y.	STEEL LBS.	CONCRETE C.Y.	STEEL LBS.	DEPTH	CONCRETE C.Y.	STEEL LBS.	CONCRETE C.Y.	STEEL LBS.	DEPTH	G	LENGTH	H	LENGTH	J	LENGTH	C	LENGTH	D	LENGTH	DEPTH	
3'-0"	1.7	150					3'-0"					17	3'-7"	23	3'-8"	13	5'-8"	12	3'-8"	4	3'-8"	4	5'-8"	5'-0"
3'-6"	1.9	158					3'-6"	2.8	244			17	4'-1"	23	3'-8"	13	5'-8"	12	3'-8"	4	3'-8"	4	5'-8"	5'-6"
4'-0"	2.1	193	7	228	2.0	227	4'-0"	3.1	252	3.0	252	17	4'-7"	27	3'-8"	15	5'-8"	12	3'-8"	4	3'-8"	4	5'-8"	6'-0"
4'-6"	2.3	205	3.0	237	2.9	237	4'-6"	3.4	294	3.3	294	17	5'-1"	31	3'-8"	15	5'-8"	12	3'-8"	4	3'-8"	4	5'-8"	6'-6"
5'-0"	2.5	231	3.3	279	3.2	279	5'-0"	3.7	303	3.6	303	17	5'-7"	35	3'-8"	17	5'-8"	12	3'-8"	4	3'-8"	4	5'-8"	7'-0"
5'-6"	2.8	239	3.6	288	3.5	288	5'-6"	4.0	339	3.9	339	17	6'-1"	35	3'-8"	17	5'-8"	12	3'-8"	4	3'-8"	4	5'-8"	7'-6"
6'-0"	3.0	270	3.9	324	3.8	324	6'-0"	4.6	399	4.5	399	17	6'-1"	39	3'-8"	19	5'-8"	12	3'-8"	4	3'-8"	4	5'-8"	8'-0"
6'-6"	3.2	279	4.2	348	4.1	348	6'-6"	5.2	443	5.0	443	17	6'-1"	39	3'-8"	19	5'-8"	12	3'-8"	4	3'-8"	4	5'-8"	8'-6"
7'-0"	3.5	308	4.5	384	4.4	384	7'-0"																	
7'-6"	3.7	316	4.8	393	4.7	393	7'-6"																	
8'-0"	3.9	347	5.1	429	5.0	429	8'-0"																	

FOR 3"x3" 30' PIPE DEDUCT 0.18 CY. FOR 2"x3" 36' PIPE DEDUCT 0.26 CY.
 FOR 4"x4" 30' PIPE DEDUCT 0.36 CY. OR 0.18 FOR 2"x4" 48' PIPE DEDUCT 0.47 CY. OR 0.24 FOR 1" PIPE
 ALL REINFORCING STEEL TO BE NO. 5 DEFORMED BARS, EVENLY SPACED WITH A MAXIMUM SPACING OF 12" C/C.
 ALL STEEL TO HAVE 2" INCH MIN. COVER.
 DROP INLET TO BE CONSTRUCTED IN ACCORDANCE WITH STRUCTURAL CONCRETE, SECTION 501.
 GRATES TO CONFORM TO DROP INLETS, CATCH BASINS, AND MANHOLES, SECTION 604.
 FURNISHING AND LAYING OF BRICKS FOR ADJUSTING ELEVATION OF GRATE SHALL BE INCLUDED IN UNIT BID PRICE FOR CONCRETE, CLASS B, PAY ITEM 501.25, AND THEIR VOLUME TO BE INCLUDED IN THE FINAL QUANTITIES.
 MORTAR, TYPE M, TO BE USED AS JOINT FILLER AND LAYING OF BRICK.
 FOR PIPES OF 30" OR MORE IN DIAMETER, ALLOWANCE SHALL BE MADE FOR THE OPENING IN COMPUTING CONCRETE VOLUMES. THIS DEDUCTION WILL BE BASED ON THE RATED DIAMETER OF THE PIPE USED, WITH THE SAME DEDUCTION FOR CONCRETE AND METAL PIPE. ABOVE TABLES INDICATE DEDUCTION FOR ONE PIPE.

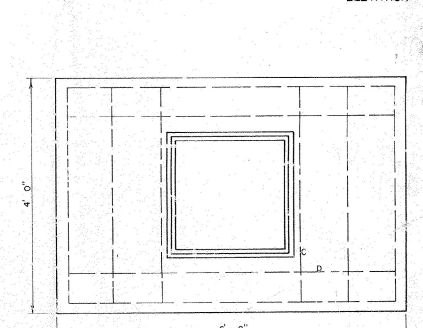
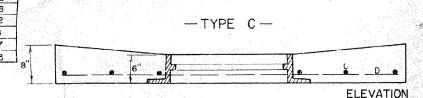
STEEL AND CONCRETE QUANTITIES				
4'x6' DROP INLET WITH ONE GRATE WITH 4'x4' TOP TYPE D				
DEPTH	CONCRETE C.Y.	STEEL LBS.	CONCRETE C.Y.	STEEL LBS.
5'-0"	3.2	315	3.1	313
5'-6"	3.5	322	3.4	322
6'-0"	3.8	358	3.7	358
6'-6"	4.1	382	4.0	382
7'-0"	4.4	413	4.3	418
7'-6"	4.7	427	4.6	437
8'-0"	5.0	463	4.9	463



4'x6' DROP INLET WITH 4'x4' TOP TOP WITH ONE CAST IRON GRATE



4'x6' DROP INLET TOP WITH TWO CAST IRON GRATES



4'x6' DROP INLET TOP WITH ONE CAST IRON GRATE

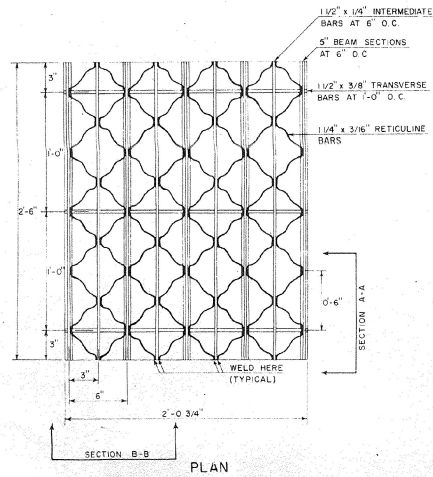
REVISIONS AND CORRECTIONS
 APR. 2, 1973 - ORIGINAL D-6 REDRAWN

APPROVED
 April 8, 1973
 DATE
 R.H. Arnold
 CHIEF ENGINEER
 E.H. Sherman
 ASST. CHIEF ENGINEER
 J.M. Law
 HIGHWAY ENGINEER

REINFORCED CONCRETE DROP INLET WITH GRATE FOR USE IN DITCHES

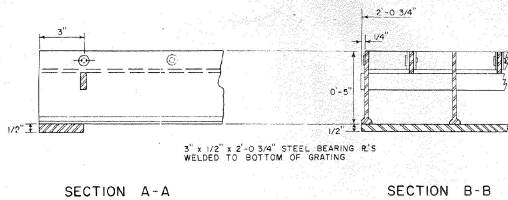
VERMONT DEPARTMENT OF HIGHWAYS STANDARD D-6

STEEL GRATE



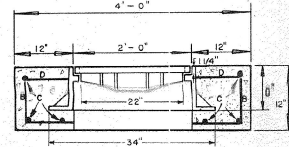
GRATE SIZE SINGLE 24 3/4" x 30"
DOUBLE 24 3/4" x 54"
WEIGHT 95 LBS OR MORE
GRATES SHALL BE CAPABLE OF SUPPORTING H-20 (32,000 LB AXLE LOAD) INCLUDING 20% IMPACT.
UNIT STRESSES (LBS PER SQ IN.)

	16,000	20,000
MAIN BAR PARALLEL TO TRAFFIC	45	53
MAIN BAR PERPENDICULAR TO TRAFFIC	39	42



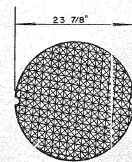
CAST IRON COVER WITH FRAME

BAR	NO.	LENGTH	TYPE
B	4	3'-8"	STRAIGHT
C	6	3'-8"	STRAIGHT
D	4	3'-8"	STRAIGHT



ELEVATION

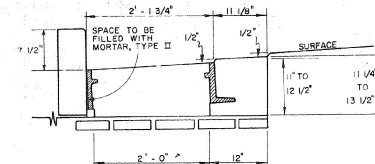
ALL REINFORCING STEEL TO BE NO. 6 DEFORMED BARS



PLAN

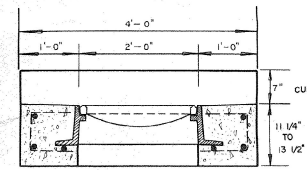
GENERAL NOTES
1. WEIGHT OF FRAME AND COVER = 425 LBS.

CAST IRON GRATE WITH FRAME

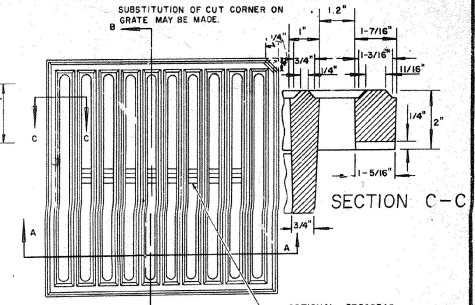


ELEVATION OF REINFORCED CONCRETE DROP INLET WITH VERTICAL GRANITE CURB AND 3 FLANGE CAST IRON GRATE FOR CAST IRON GRATE.

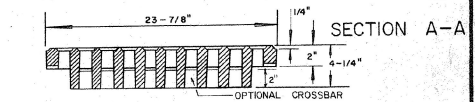
SEE STANDARD D-9 FOR CONCRETE VOLUME, REINFORCING STEEL SCHEDULE AND CURB JOINT DETAIL.



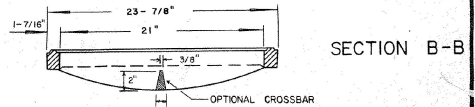
ELEVATION



PLAN



SECTION A-A

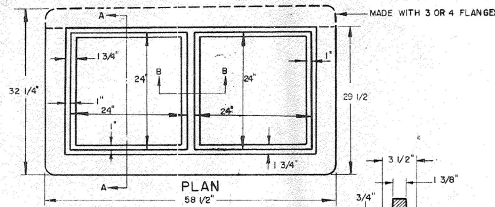


SECTION B-B

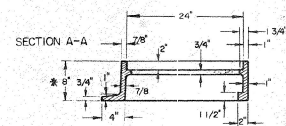
WEIGHT OF 3 FLANGED FRAME AND GRATE
GRATE 220 LBS
FRAME 260 LBS
TOTAL 480 LBS

CAST IRON GRATE, TYPE A

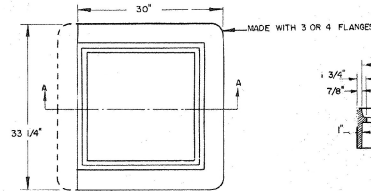
USE OF THE TYPE A GRATE IS PROHIBITED WHERE BICYCLE TRAFFIC IS EXPECTED.



PLAN

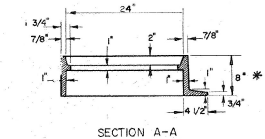


RECTANGULAR CAST IRON FRAME FOR TWO 24" SQUARE CAST IRON GRATES



SQUARE CAST IRON FRAME FOR CAST IRON GRATE TYPE A

* NOTE: FRAME DEPTH TO BE "e" WHEN USED IN CONJUNCTION WITH DROP INLET DETAILED ON STANDARD D-6.



SECTION A-A

THIS FRAME TO BE PLACED IN DROP INLET TOP BEFORE CONCRETE IS POURED. 4 FLANGES UNLESS OTHERWISE INDICATED. FRAMES TO BE FURNISHED WITH 3 FLANGES WHEN USED IN CONJUNCTION WITH CURB OR AS DIRECTED BY THE ENGINEER.

REVISIONS AND CORRECTIONS

APRIL 25, 1972 CAST IRON COVER CHANGED FROM SQUARE TO CIRCULAR
SEPT. 4, 1980 OPTIONAL CROSSBAR ADDED TO A GRATE;
NOTE ADDED TO A GRATE FRAME DETAIL.
AUG 24, 1981 NOTE ADDED RESTRICTING USE OF TYPE A GRATE.

APPROVED

DATE Dec 6, 1911

R. W. Carroll
CHIEF ENGINEER
E. J. Stechny
ASST. CHIEF ENGINEER
G. M. Lane
HIGHWAY ENGINEER

DRAWN: G. A. J. A.
TRACED: A. J. A.

STEEL GRATE
CAST IRON GRATE TYPE A
CAST IRON COVER



STANDARD
D-11