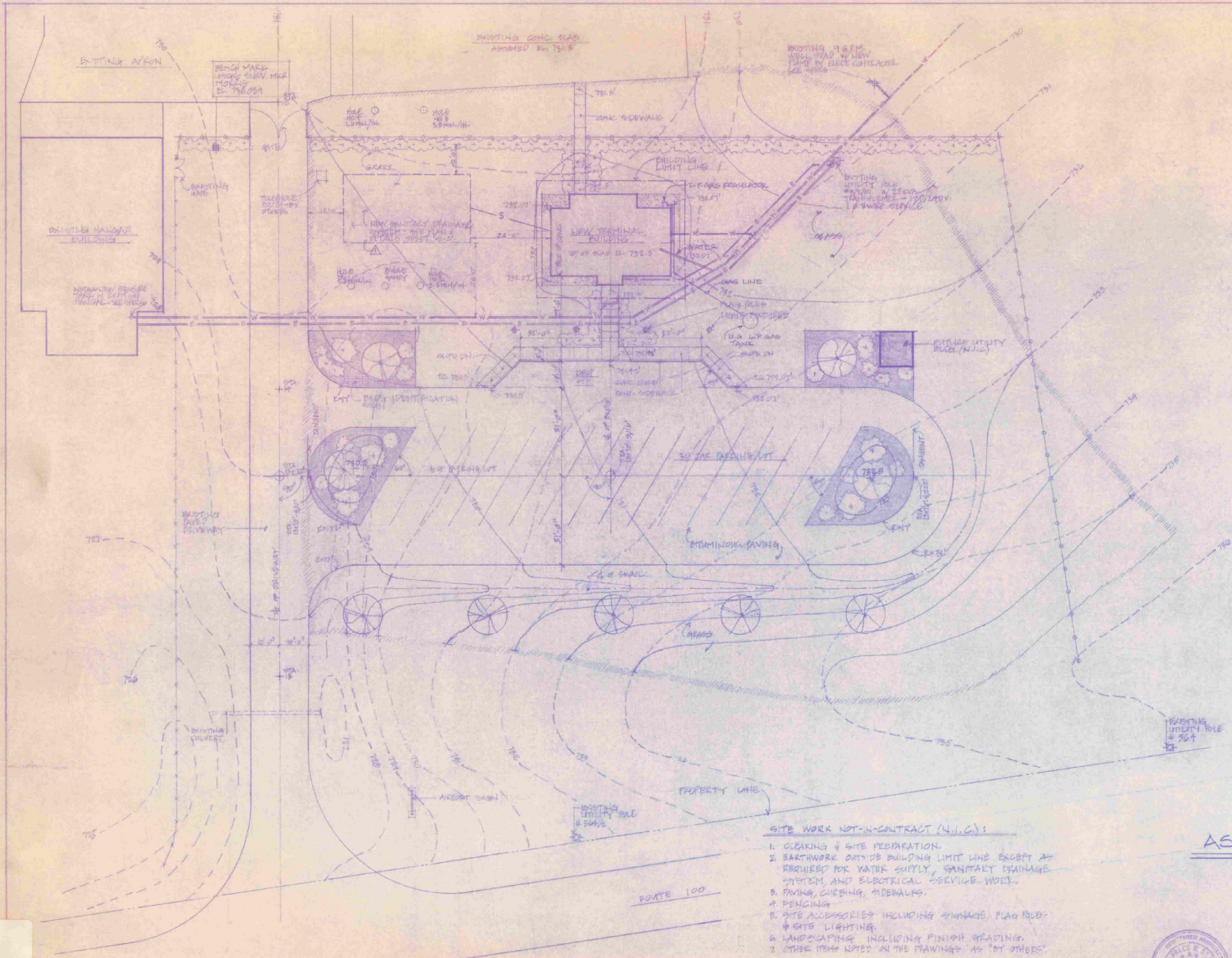


A/R 23-2010
★ 1984



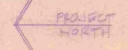
- NOTES**
1. EXISTING CONSTRUCTION NOT SHOWN ON PLAN IS TO BE REMOVED.
 2. CONTOURS TAKEN FROM SURVEY OF MORRISVILLE-STOWE STATE AIRPORT DATED JUNE, 1962. PROJECT-AIR 23-2010 BY STATE OF VERMONT, AGENCY OF TRANSPORTATION.
 3. CUT & FILL IS TO BE BALANCED. MAKE FINAL ADJUSTMENTS TO FORTH & FINISH GRADING AS PER FIELD INSTRUCTION.

- LEGEND**
- EXISTING WATER LINE TO BE ABANDONED
 - EXISTING WATER LINE - 1" AVG
 - EXISTING ELECTRICAL SERVICE
 - SANITARY SEWER LINE
 - WATER LINE
 - ELECTRICAL SERVICE
 - GAS LINE
 - EXISTING CHAIN LINK FENCE TO REMAIN
 - WOOD POST & BEAM FENCE
 - HEDGE
 - DECIDUOUS TREE
 - MULCH BED
 - SHRUB
 - CONIFEROUS TREE
 - GRAVEL BED
 - EXISTING CONTOUR
 - NEW CONTOUR
 - SEBORING & GRADING LIMITS
 - PERCOLATION TEST HOLE REFERRED JUNE 28, 1962 BY STATE OF VERMONT
 - BUILDING LIMIT LINE

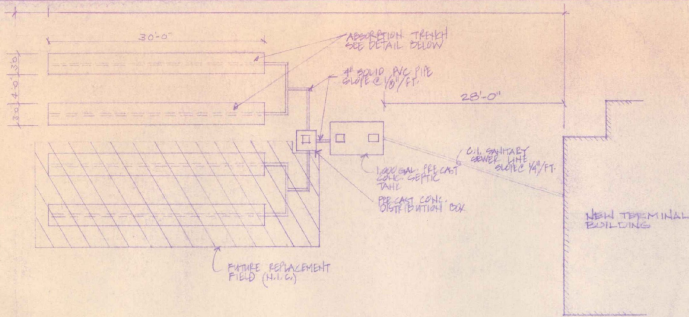
- SITE WORK NOT-IN-CONTRACT (N.I.C.):**
1. CLEANING & SITE PREPARATION.
 2. BARTHWORK OUTSIDE BUILDING LIMIT LINE EXCEPT AS REQUIRED FOR WATER SUPPLY, SANITARY DRAINAGE SYSTEM AND ELECTRICAL SERVICE WORK.
 3. PAVING, CURBING, SIDEWALKS.
 4. FENCING.
 5. SITE ACCESSORIES INCLUDING SIGNAGE, FLAG POLES & SITE LIGHTING.
 6. LANDSCAPING INCLUDING FINISH GRADING.
 7. OTHER ITEMS NOTED ON THE PLANS AS "BY OTHERS".

AS BUILT

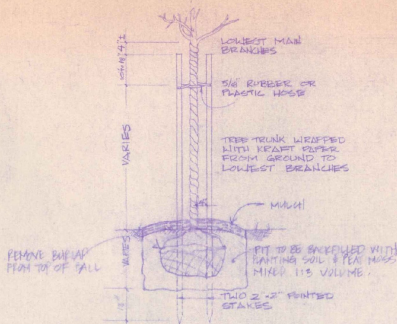
SITE PLAN · 1/8" = 1'-0"



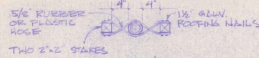
STATE OF VERMONT			
DIVISION OF STATE BUILDINGS			
AGENCY OF ADMINISTRATION			
MONTPELIER,		VERMONT	
SITE PLAN			
NEW TERMINAL BUILDING MORRISVILLE-STOWE STATE AIRPORT MORRISVILLE VERMONT			
DATE MAY 28 1984	SCALE 1/8" = 1'-0"	REVISIONS	DWG. NO. S-1
DRAWN BY CWS	APPROVED BY CWS		L OF 10



150 SANITARY DRAINAGE SYSTEM PLAN
1/8" = 1'-0"

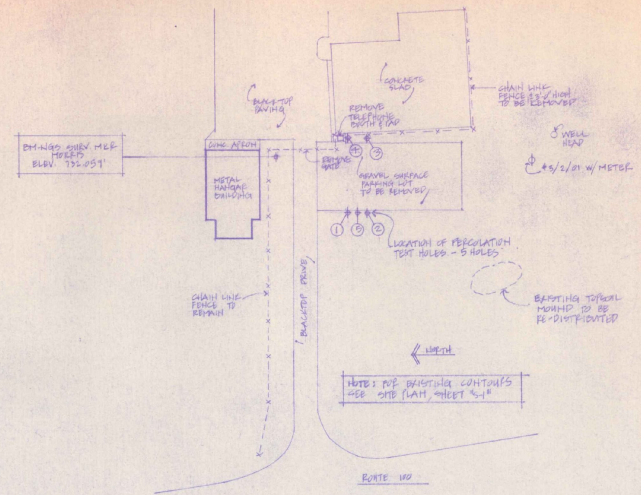


ELEVATION
1/2" = 1'-0"

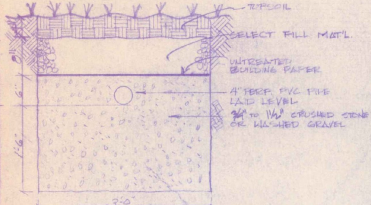


PLAN
1" = 1'-0"

152 PLANTING DETAIL TREES & SHRUBS (N.I.C.)
SHRUB PLANTING DETAIL SIMILAR - OMIT STAKING & WRAP



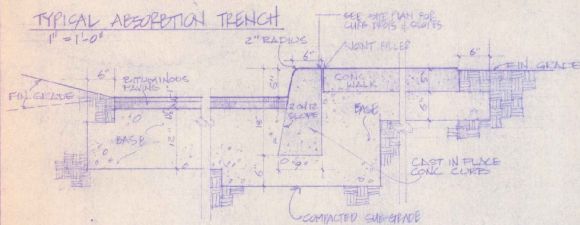
153 EXISTING SITE & SITE PREP PLAN (N.I.C.)
1" = 50'-0"



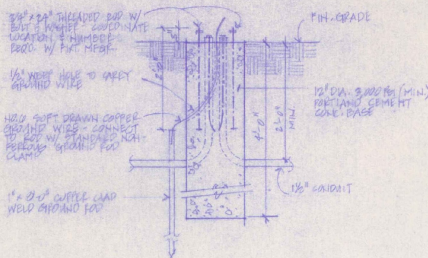
TYPICAL ABSORPTION TRENCH
1" = 1'-0"

NOTES:

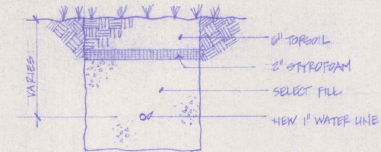
1. PRECIPITATION RATE = 2.3 MM/H.
2. APPLICATION RATE = 1.5 GAL/SQ/FT/DAY
3. DESIGN FLOW = 36.5 GAL/DAY
4. FACTOR OF SAFETY = 1.15



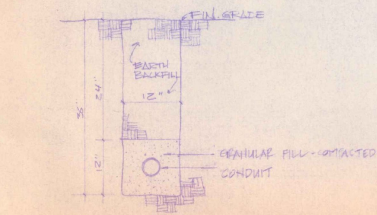
154 CONCRETE WALK, CURB, & BITUMINOUS PAVING DETAIL (N.I.C.)
1" = 1'-0"



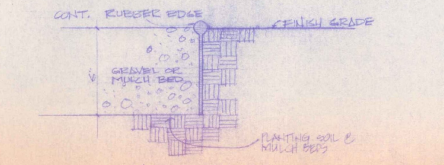
155 TYP. CONC. BASE @ SITE LIGHTING (N.I.C.)
1" = 1'-0"



DETAIL @ NEW WATER LINE TRENCH
1" = 1'-0"



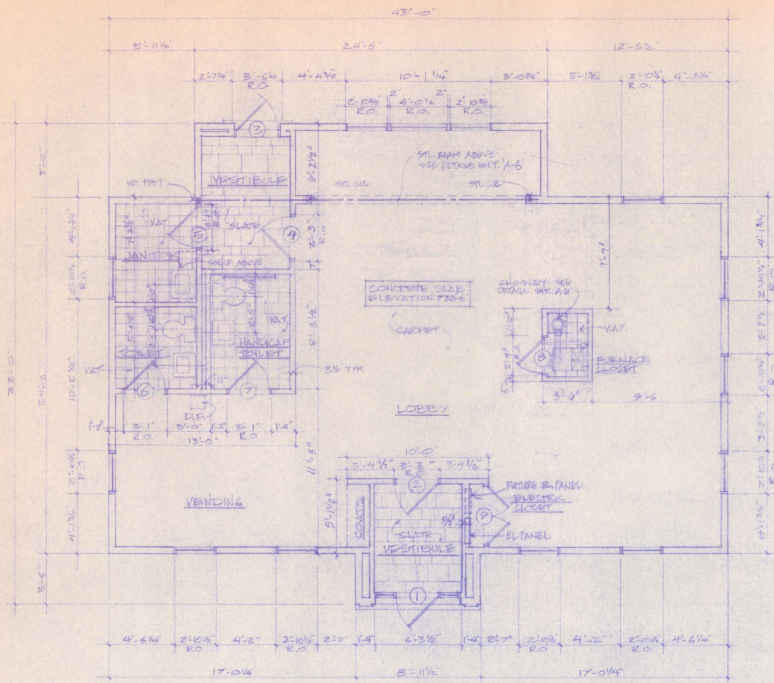
156 TYPICAL UTILITY & FIRE TRENCH
1" = 1'-0"



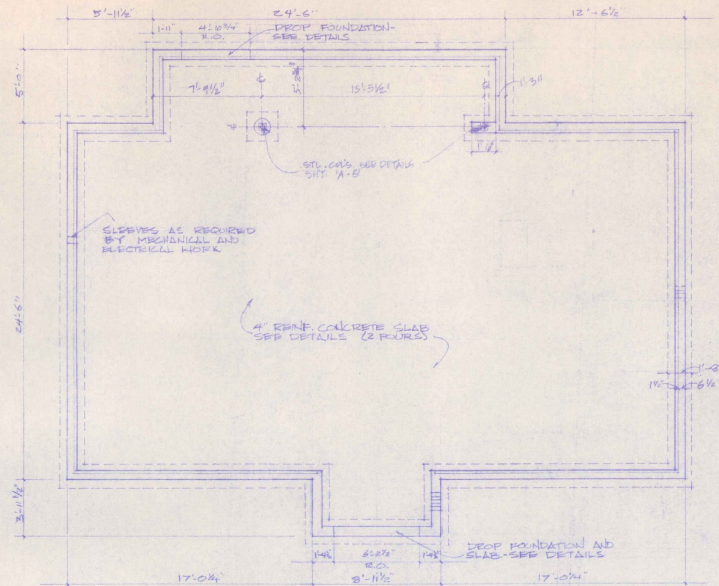
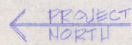
157 GRAVEL/MULCH BED DETAIL (N.I.C.)
3" = 1'-0"

STATE OF VERMONT			
DIVISION OF STATE BUILDINGS			
AGENCY OF ADMINISTRATION			
MONTPELIER, VERMONT			
SITE DETAILS			
NEW TERMINAL BUILDING MORRISVILLE/STONE STATE AIRPORT MORRISVILLE VERMONT			
DATE: MAY 6, 1993	SCALE: AS SHOWN	REVISIONS:	DWG. NO. S-2
DRAWN BY: S. FRENCK	APPROVED BY: C.W.G.		S OF 10





FLOOR PLAN



FOUNDATION PLAN

SEE SECTIONS FOR SLAB, FOUNDATION, AND FOOTING DETAILS

DOOR SCHEDULE

NO	SIZE	TYPE	HOW	COMMENTS
1	2'-0" x 7'-0" x 1 3/4"	WD. RAIL & STYLE	1	0128 NIGHTS UNDERCUT DOOR #1
2	3'-0" x 7'-0" x 1 3/4"	WD. RAIL & STYLE	2	MATCH DOOR NO. 1.
3	3'-0" x 7'-0" x 1 3/4"	WD. RAIL & STYLE	1	TRANSOM. SEE DETAIL. DOOR #1 NECESSARY. MATCH DOOR NO. 1.
4	3'-0" x 7'-0" x 1 3/4"	WD. RAIL & STYLE	2	MATCH DOOR NO. 1. UNDERCUT DOOR #1.
5	2'-10" x 6'-8" x 1 3/4"	WD. FLUSH	4	"C" LABEL. UNDERCUT DOOR #1.
6	2'-10" x 6'-8" x 1 3/4"	WD. FLUSH	3	UNDERCUT DOOR 3/4".
7	2'-10" x 6'-8" x 1 3/4"	WD. FLUSH	3	UNDERCUT DOOR 3/4".
8	2'-0" x 6'-8" x 1 3/4"	WD. LOUVER	5	-
9	4'-0" x 6'-8" x 1 3/4"	WD. LOUVER	5	FACE OF COUPE. FINISH. METAL. FINISH. SEE DETAIL.

GENERAL NOTES

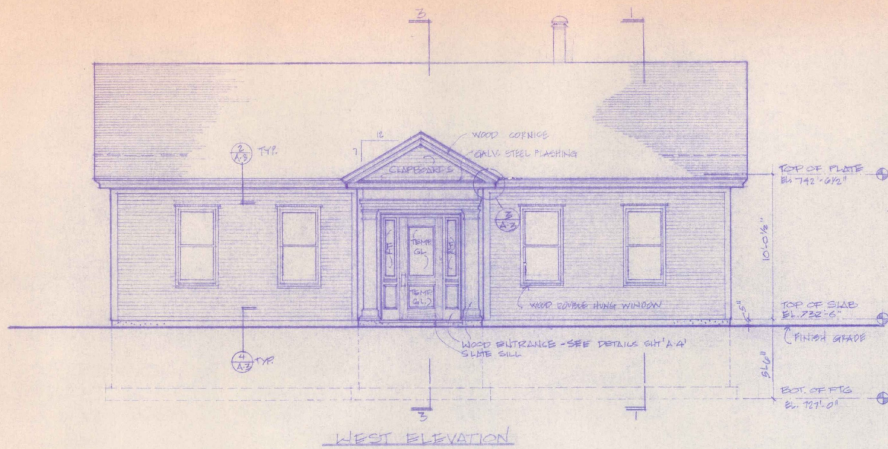
- 1 ALL DIMENSIONS ARE FINISH DIMENSIONS (FACE OF STUD, CONC. ETC.) UNLESS OTHERWISE NOTED.
- 2 CONCRETE IS RESPONSIBLE FOR VENTILATION AND CONTAMINANT TO ALL DIMENSIONS.
- 3 OBTAIN ALL PERMITS AND PAY ALL FEES REQUIRED FOR CONSTRUCTION.

STATE OF VERMONT
 DIVISION OF STATE BUILDINGS
 AGENCY OF ADMINISTRATION
 MONTPELIER, VERMONT

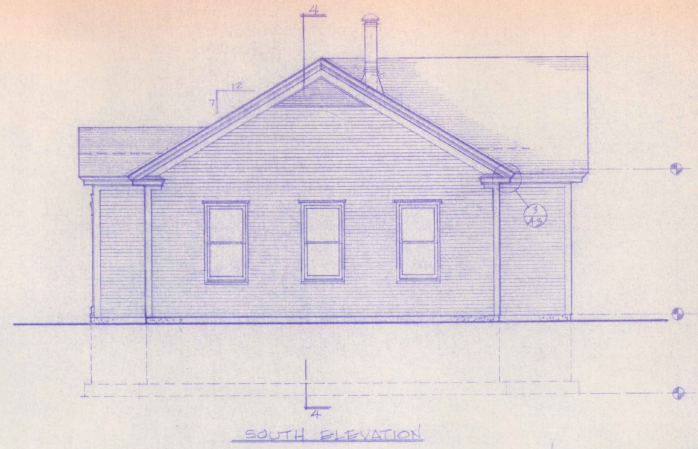
FLOOR & FOUNDATION PLANS
 NEW TERMINAL BUILDING
 MORRISVILLE/STOWE STATE AIRPORT
 MORRISVILLE, VERMONT

DATE: 11/14/88	SCALE: 1/4" = 1'-0"	REVISIONS:	DWG. NO. 2-1
DRAWN BY: G. SCHMIDT	APPROVED BY: G. SCHMIDT		3 OF 10



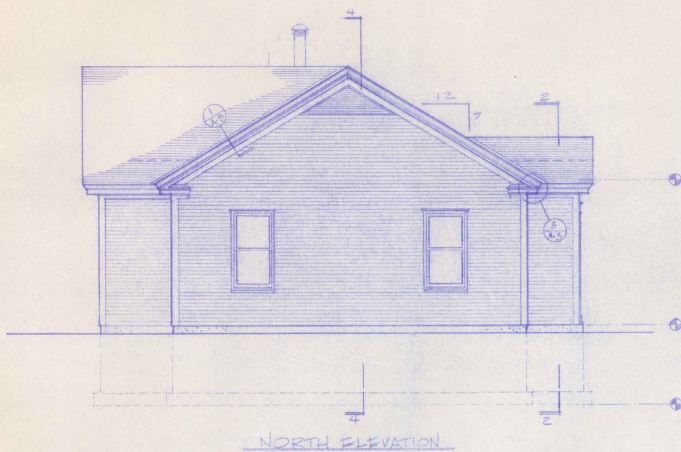


WEST ELEVATION

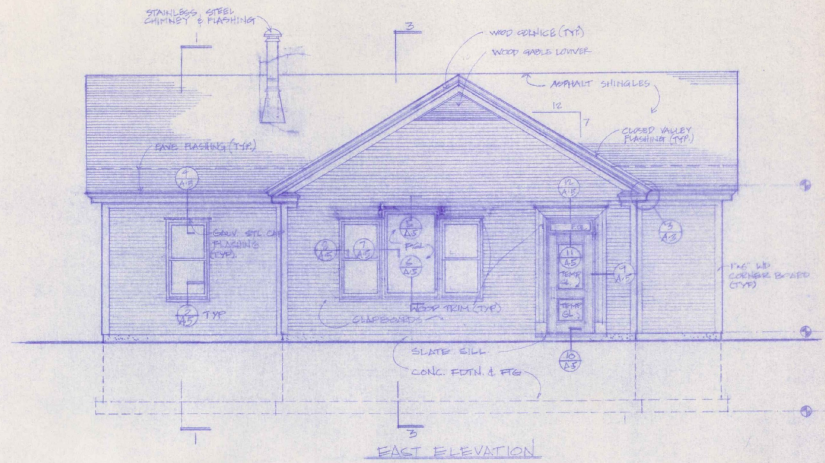


SOUTH ELEVATION

NOTE
 TYP DOUBLE HUNG WINDOW
 CAROLCO PRIMED WOOD = 28328



NORTH ELEVATION



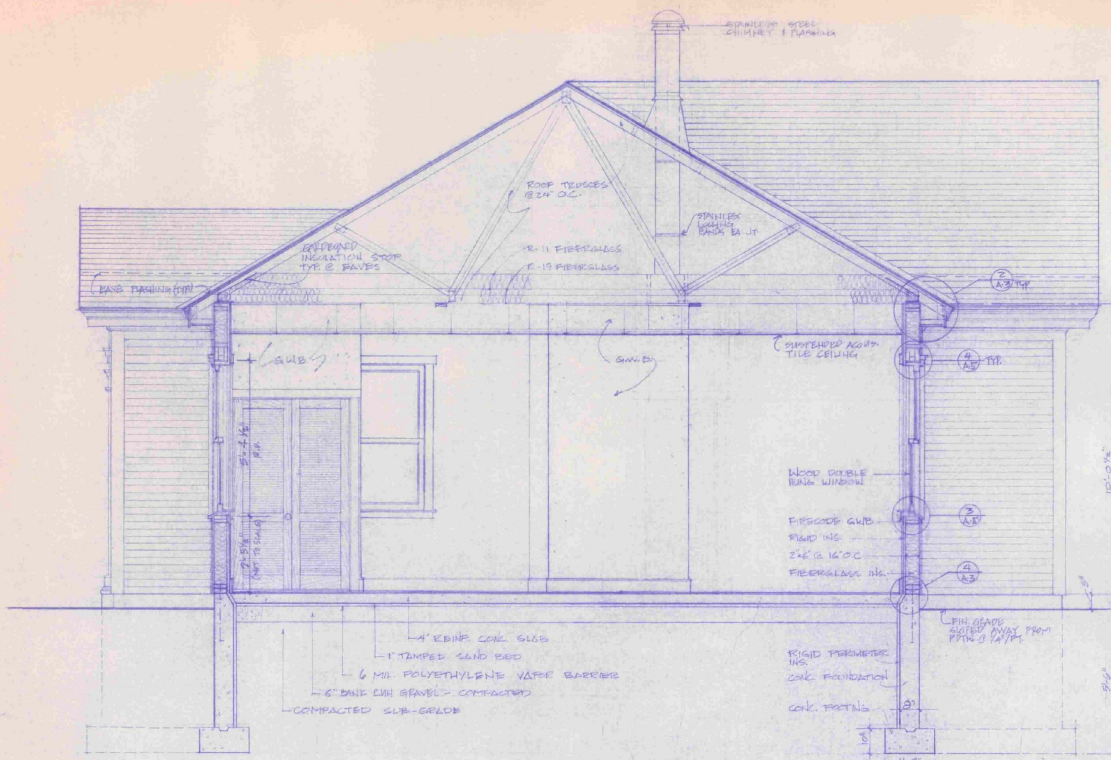
EAST ELEVATION

STATE OF VERMONT
 DIVISION OF STATE BUILDINGS
 AGENCY OF ADMINISTRATION
 MONTPELIER, VERMONT

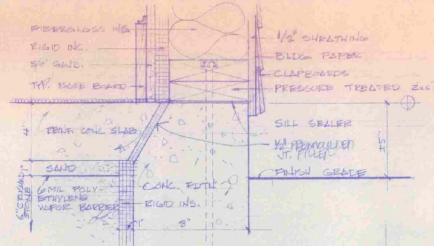
ELEVATIONS
 NEW TERMINAL BUILDING
 MORRISVILLE/STOWE STATE AIRPORT
 MORRISVILLE VERMONT

DATE: JULY 2, 1989	SCALE: 1/4" = 1'-0"	REVISIONS:	DWG. NO. A-2
DRAWN BY: S.M.	APPROVED BY: S.M.		1 of 10

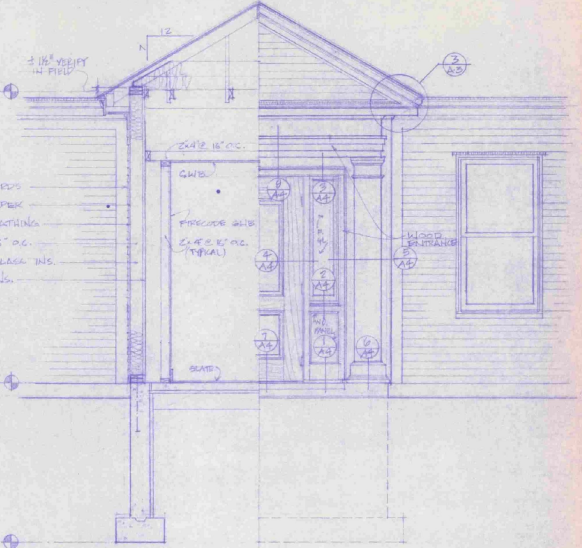




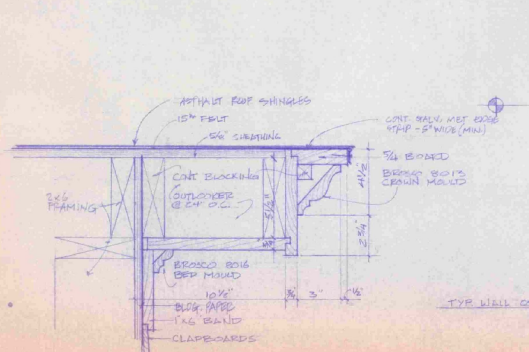
SECTION - 1
1/2" = 1'-0"



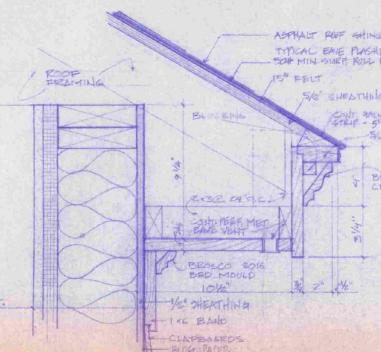
TYPICAL FOUNDATION SILL
3" = 1'-0"



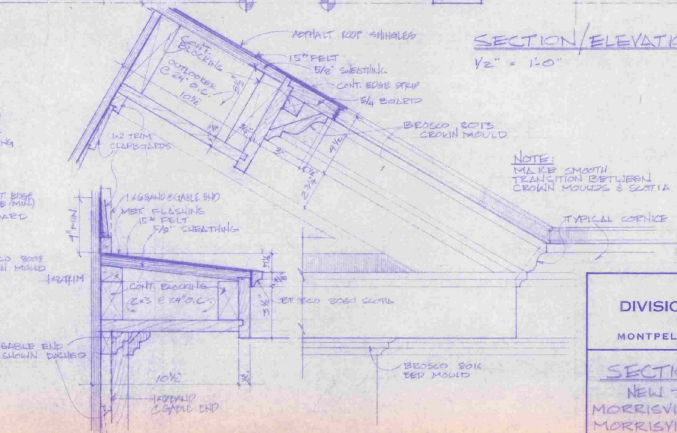
SECTION/ELEVATION - 2
1/2" = 1'-0"



TYPICAL CORNICE @ GABLE
3" = 1'-0"



TYPICAL CORNICE @ FAUCES
3" = 1'-0"



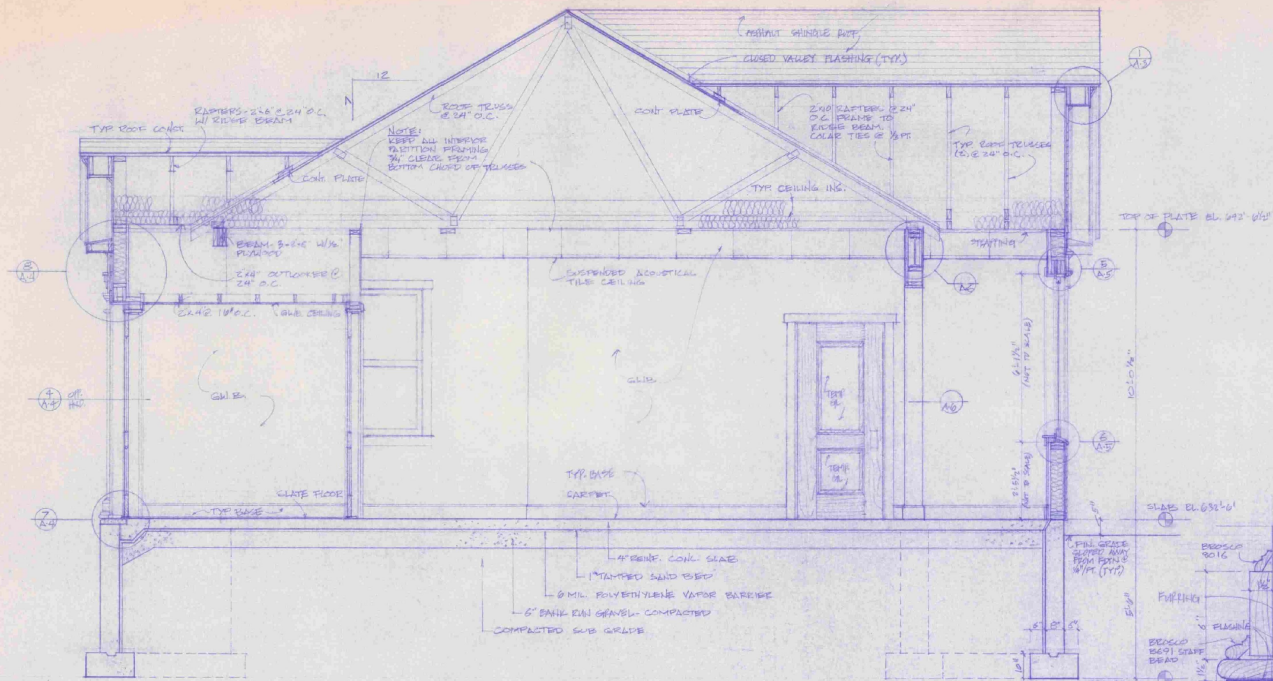
PEDIMENT DETAIL @ ENTRANCE
3" = 1'-0" (GABLE END WITH SHINGLES)



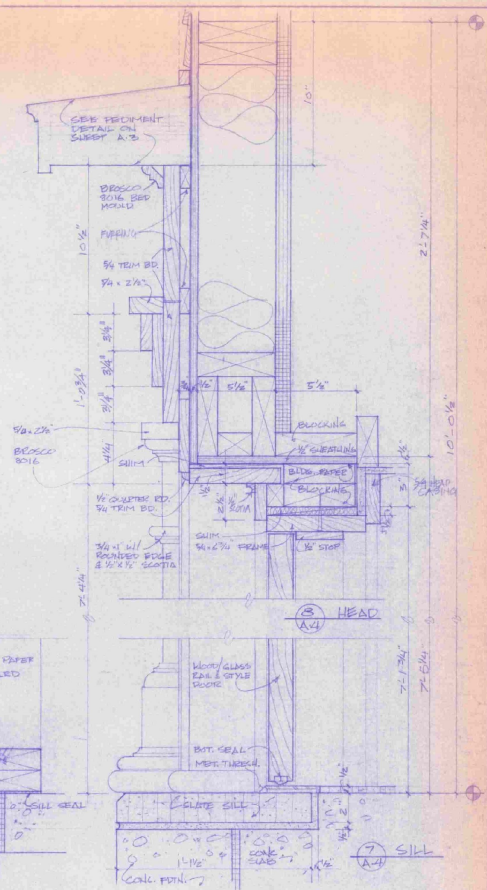
STATE OF VERMONT
DIVISION OF STATE BUILDINGS
AGENCY OF ADMINISTRATION
MONTPELIER, VERMONT

SECTIONS AND DETAILS
NEW TERMINAL BUILDING
MORRISVILLE/STONE STATE AIRPORT
MORRISVILLE, VERMONT

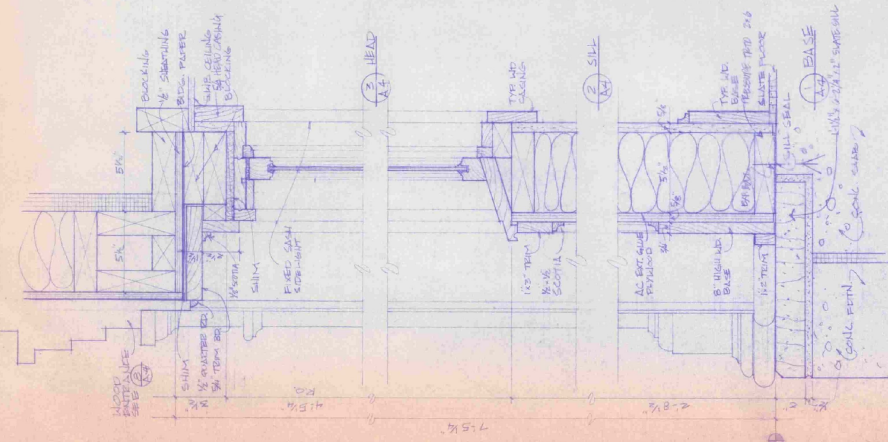
DATE	SCALE	REVISIONS	DWG. NO.
JULY 6, 1983	AS NOTED		A - 3
DRAWN BY: GERMER	APPROVED BY: GMS		1 OF 10



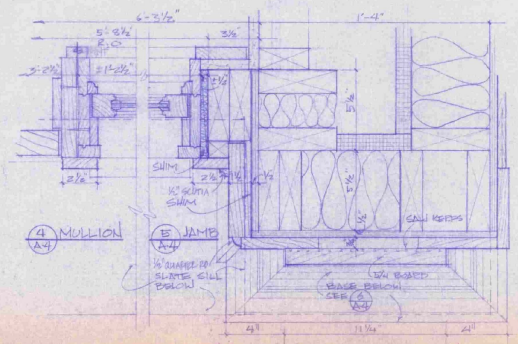
SECTION - 3
1/2" = 1'-0"



ENTRANCE/DOOR DETAILS - SECTION
3" = 1'-0"



SIDELIGHT DETAILS @ ENTRANCE - SECTION
3" = 1'-0"



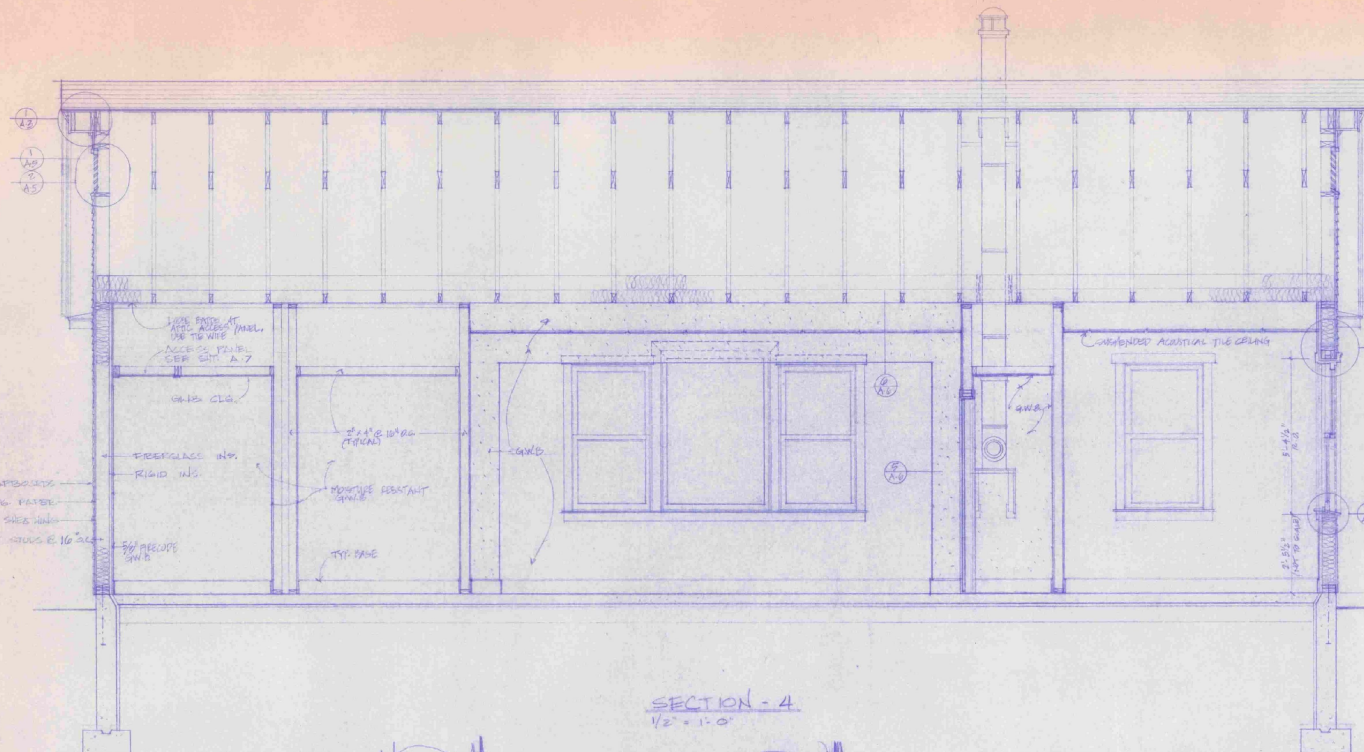
ENTRANCE/SIDELIGHT DETAILS - PLAN
3" = 1'-0"

STATE OF VERMONT
DIVISION OF STATE BUILDINGS
AGENCY OF ADMINISTRATION
MONTPELIER, VERMONT

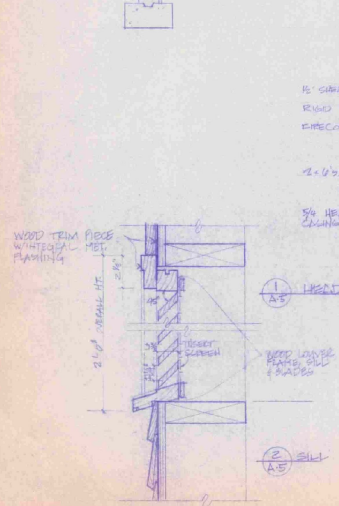
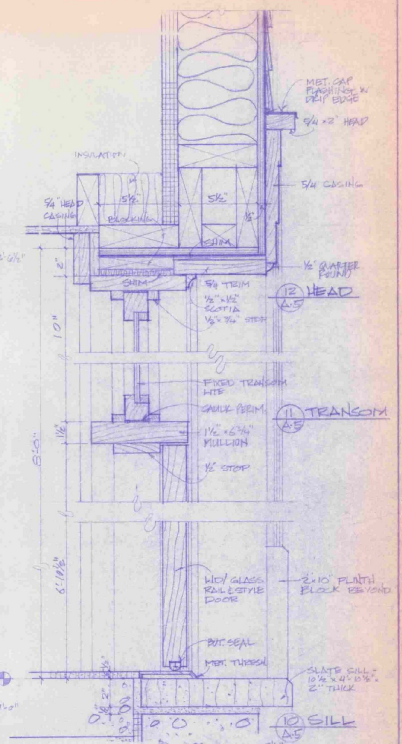
SECTIONS AND DETAILS
NEW TERMINAL BUILDING
MORRISVILLE/STOWE STATE AIRPORT
MORRISVILLE VERMONT

DATE: July 6, 1953	SCALE: AS NOTED	REVISIONS:	DWG. NO. A-4
DRAWN BY: S. KENICK	APPROVED BY: C. W. B.		1 OF 10

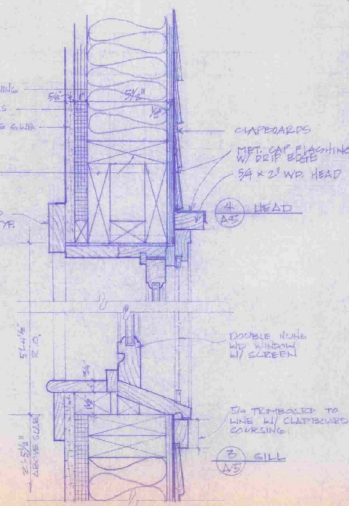




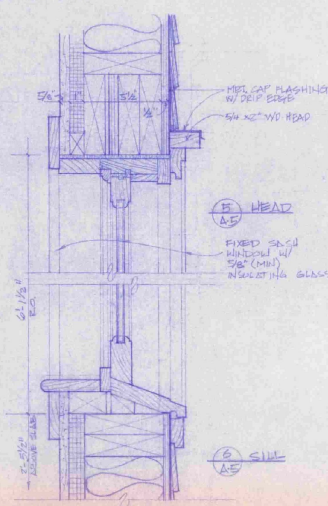
SECTION - 4
1/2" = 1'-0"



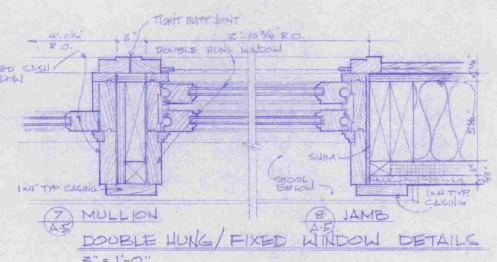
SECTION C GABLE VOWER
3" = 1'-0"



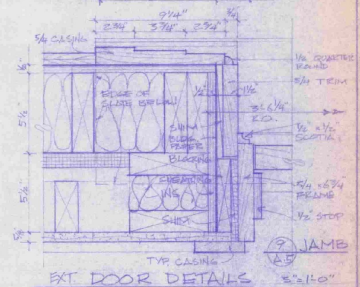
DOUBLE HUNG WINDOW DETAILS
3" = 1'-0"



FIXED WINDOW DETAILS
3" = 1'-0"



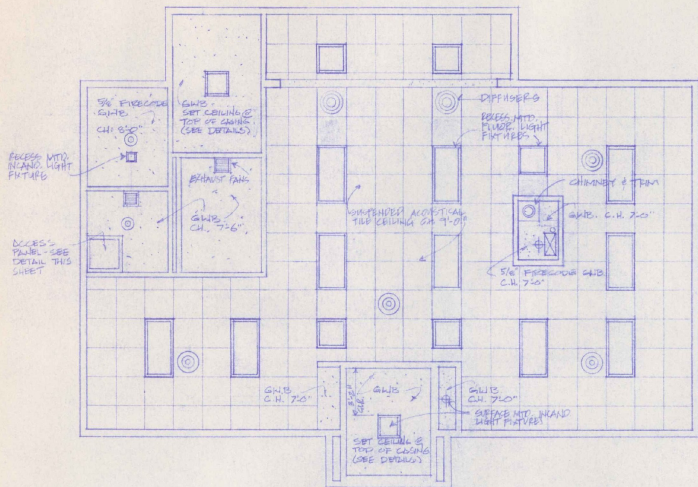
MULLION
DOUBLE HUNG/FIXED WINDOW DETAILS
3" = 1'-0"



EXT. DOOR DETAILS
3" = 1'-0"

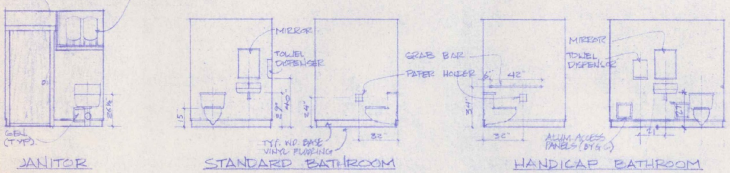


STATE OF VERMONT			
DIVISION OF STATE BUILDINGS			
AGENCY OF ADMINISTRATION			
MONTPELIER.		VERMONT	
SECTIONS AND DETAILS			
NEW TERMINAL BUILDING			
MORRISVILLE/STOWE STATE AIRPORT			
MORRISVILLE		VERMONT	
DATE: JULY 26, 1959	SCALE: AS NOTED	REVISIONS:	DWG. NO. A-5
DRAWN BY: C. EMMICK	APPROVED BY: C. W. B.		7 of 12

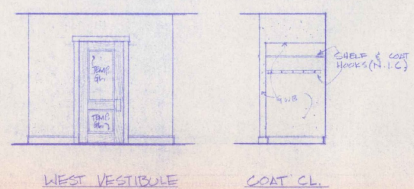


REFLECTED CEILING PLAN
1/4" = 1'-0"

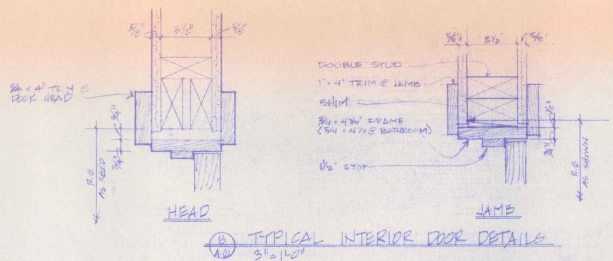
PLUMBING FIXTURES BY MECH CONTRACTOR
PAINTED PLUMBING SUPPORT SHEET BY GENERAL CONTRACTOR



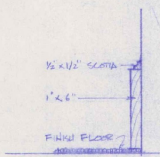
NOTE:
VINYL WALL COVERING TO BE INSTALLED ON ACCESS PANELS AND
THREE WALLS IN EACH BATHROOM. DOOR
WALL IN EACH BATHROOM IS TO BE PAINTED



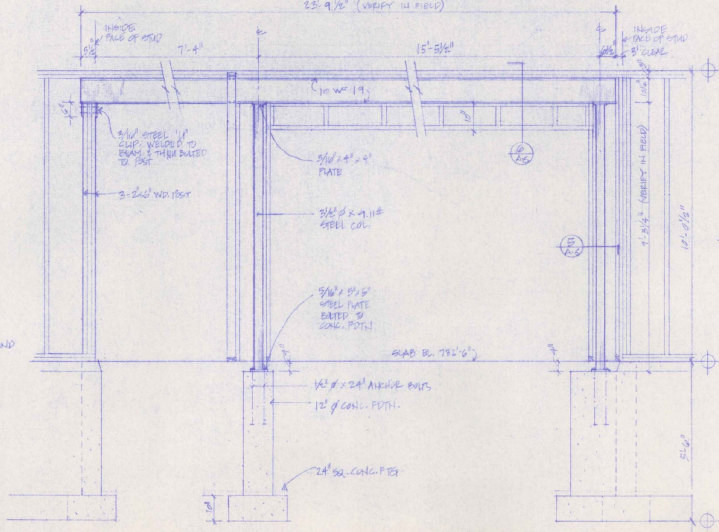
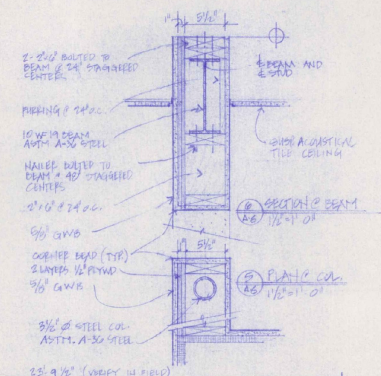
INTERIOR ELEVATIONS
1/4" = 1'-0"



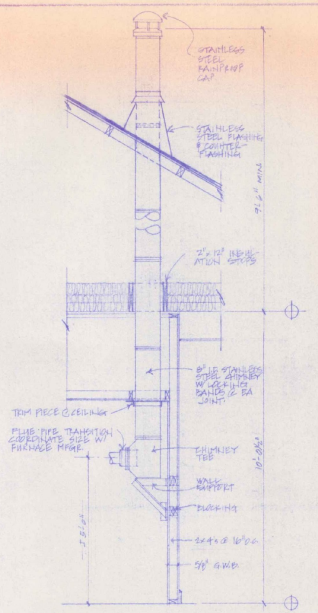
TYPICAL INTERIOR DOOR DETAILS
3/8" = 1'-0"



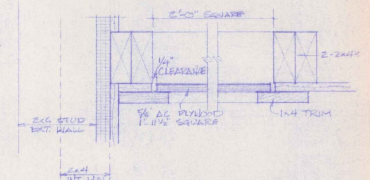
TYP WOOD BASE
3/8" = 1'-0"



ELEVATION @ STEEL BEAM & SUPPORTS
1/8" = 1'-0"



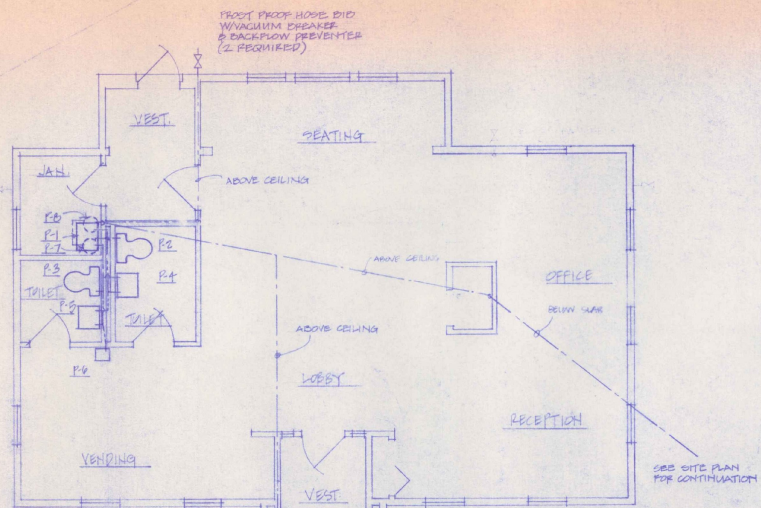
SECTION @ CHIMNEY
1/2" = 1'-0"



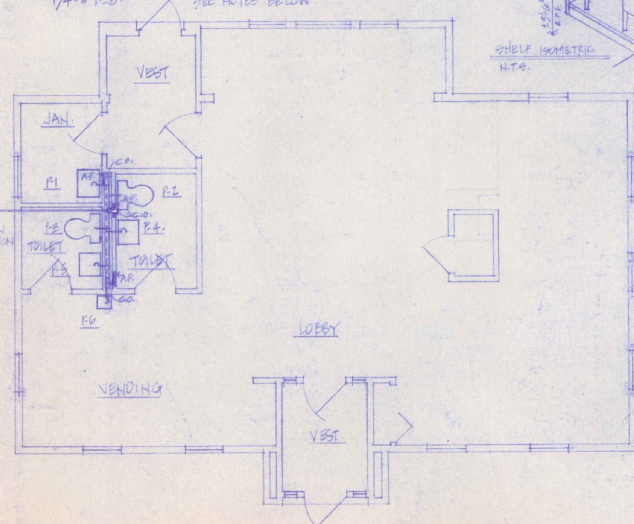
SECTION @ ATTIC ACCESS PANEL
3/8" = 1'-0"

STATE OF VERMONT			
DIVISION OF STATE BUILDINGS			
AGENCY OF ADMINISTRATION			
MONTPELIER,		VERMONT	
REFLECTED CEILING PLAN AND			
INTERIOR DETAILS			
NEW TERMINAL BUILDING			
MORRISVILLE/STOWE STATE AIRPORT			
MORRISVILLE		VERMONT	
DATE:	SCALE:	REVISIONS:	DWG. NO.:
JULY 8, 1958	AS NOTED		A-8
DRAWN BY:	APPROVED BY:		
S. BAKER	C. W. B.		8 OF 10

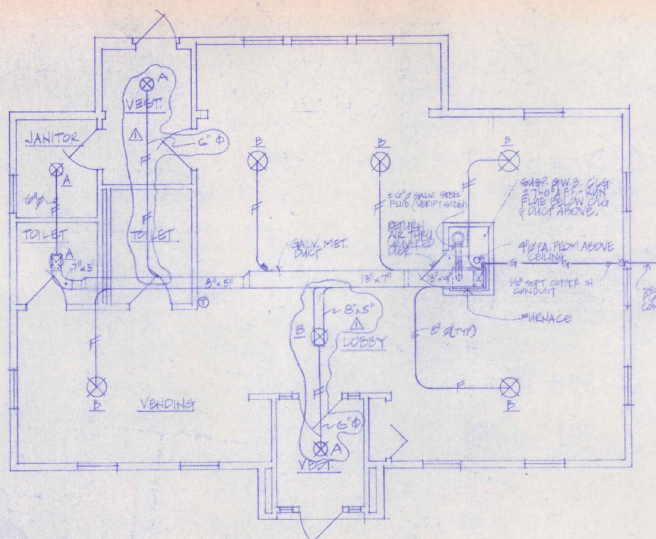




PLUMBING PLAN - WATER SUPPLY
1/4" = 1'-0"

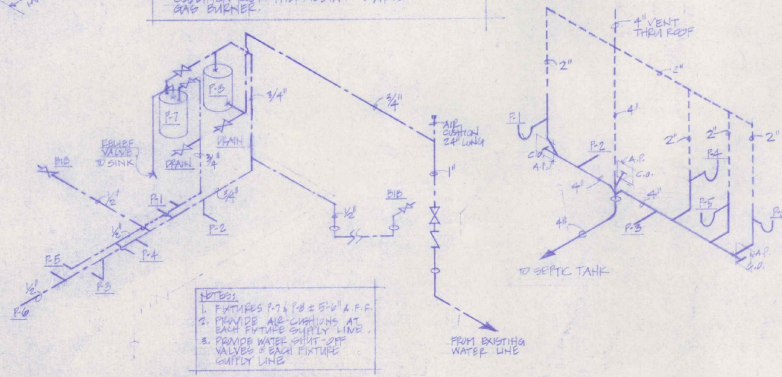


PLUMBING PLAN - SANITARY DRAINAGE
1/4" = 1'-0"

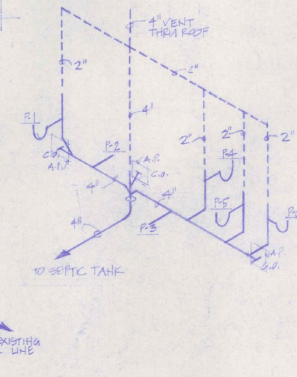


HEATING PLAN
1/4" = 1'-0"

NOTES:
1. OPERATION: FAN RUNS WHEN BONNET REACHES SET TEMPERATURE, FAN CAN OVERRIDE FOR SUMMER GAS BYPASS.
2. FURNACE P1 & P2 IS 8"0" x 6"0"



RISE DIAGRAM - WATER SUPPLY



RISE DIAGRAM - SANITARY

HEATING LEGEND

- ⊗ DIFFUSER
- ⊙ THERMOSTAT
- ⊗ DRAFT DAMPER
- FA. FRESH AIR
- L.P. GAS SUPPLY
- ⊔ FLEXIBLE DUCT

PLUMBING LEGEND

- COLD WATER PIPING
- HOT WATER PIPING
- VENT PIPING
- SANITARY PIPING
- ⊗ GATE VALVE/BID
- ⊗ CHECK VALVE
- G.O. CLEAN OUT
- ⊔ TRAP
- ⊔ LAB PENETRATION
- AP. ACCESS PANEL 12"12" BY SPECIAL CONTRACTOR

PLUMBING FIXTURE SCHEDULE

NO.	MANUFACTURER	MODEL
P1	AMERICAN STD. SERVICE SINK 'LAWRENCE' W/ 1/2\"/>	
P2	AMERICAN STD. WASTE CLOSET	8018.050
P3	AMERICAN STD. BURNING W/ WALL CARTRIDGE, FURNACE 830.000 SEAT, 8305.010 EXH. FIB.	WHITE
P4	AMERICAN STD. LAVATORY 'SCOTTIAN' W/ WALL HANGER, ADVANCE II	0800.057
P5	# 2379.010 BAYONET, # 2381.010 FLEXIBLE SANITARY FIB., # 2410.010 ADJUSTABLE 1\"/>	
P6	AMERICAN STD. PENICILLIN FOUNTAIN W/ LEVEL TYPE HANDLE	0150.010
P7	EXHIBIT SPECIFIC HOT WATER HEATER	WHITE
P8	TERR. HYDRO-PNEUMATIC GAS TYPE	64-102
P9	FIBERGLASS W/ CONTROL & FITTINGS (P14)	SP 044
BID	WOODPORT FREEZELESS W/ VACUUM BREAKER	05

HEATING EQUIPMENT SCHEDULE

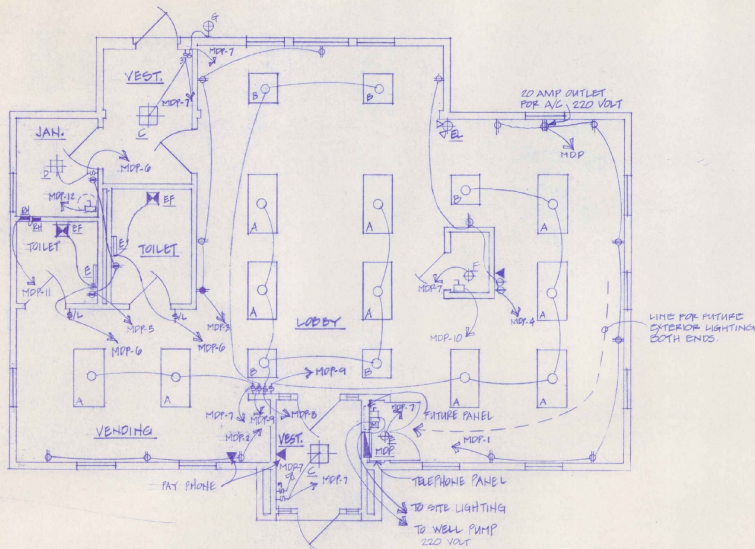
FURNACE	8305.010 W/ 1/2\"/>	UGW 0800.050
DIFFUSERS	EXHIBIT SPECIFIC 8\"/>	RF-25 WHITE
THERMOSTAT	TYPE 81 # 108.010 EX. 108.010 TYPE 81 # 108.010 EX. 108.010 WITH 2\"/>	—

REVISOR 10/11/83. STD. SEE SHEET

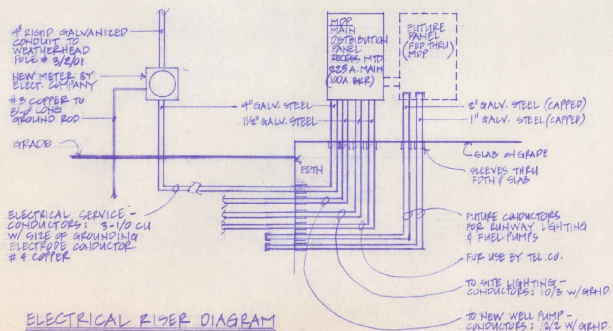
STATE OF VERMONT
DIVISION OF STATE BUILDINGS
AGENCY OF ADMINISTRATION
MONTPELIER, VERMONT

MECHANICAL PLANS
NEW TERMINAL BUILDING
MORRISVILLE/STONE STATE AIRPORT
MORRISVILLE VERMONT

DATE: 10/11/83 SCALE: 1/4" = 1'-0" REVISIONS: DWG. NO. 14-1
DRAWN BY: SWS APPROVED BY: H.J.S. 1 OF 10



ELECTRICAL PLAN



ELECTRICAL RISER DIAGRAM

NOTE: USE PVC CONDUIT EXCEPT AT THE FOLLOWING LOCATIONS - GALV. STEEL ABOVE GRADE AT MOTORS & PER UNDER SWEEP BENDS.

FIXTURE/EQUIPMENT SCHEDULE		
MARK	DESCRIPTION	MODEL #
A	2"x4" RECESS MTD. FLUOR. FIXT. "LITHONIA" W/2-40 W. LAMPS	2 95 240 A12
B	2"x2" RECESS MTD. FLUOR. FIXT. "LITHONIA" W/ 2-140 W. LAMPS	2 95 2440 A12
C	18" SURFACE MTD. INCAND. FIXT. "PRESOLITE" W/ 2-60W. BULBS	3601 WH
D	10"x10" RECESS MTD. INCAND. FIXT. "PRESOLITE" W/ 1-75 W. BULD	1015 HF-1
E	18" SURFACE MTD. FLUOR. FIXT. "PRESOLITE" W/ 1-40 W. LAMP	WB-10
F	SURFACE MTD. INCAND. FIXT. - RECESSED WITH PAUL SPRAY, 1-60W LAMP	-
G	SURFACE MTD. INCAND. FIXT. SEE EXTERIOR LOCATION. WHITE GLOBE & BLACK BEZEL. 1-100W LAMP. "PRESOLITE LIGHTING"	P-5026-00
EF	BATHROOM VENTILATOR 80CFM HOLES IN WALL DISCHARGE WITH BACK DRAFT DAMPER. "THERMADORE" TRADE WIND. (SEE NOTE #1, BELOW)	1205
EL	EMERGENCY LIGHT - TWIN CYLINDER "DUAL-LITE" W/ BATTERY & CHARGER, TEST SWITCH.	674 206
EH	RECESSED AIR WALL HEATER "MARKEL" MARK-11 1000 W. 250V WITH THERMAL LIMIT AND BUILT-IN TWO ROLE THERMOSTAT	H3133 T2

NOTE #1: ELECTRICAL CONTRACTOR TO SUPPLY & INSTALL 4" GALV. STEEL DUCT WITH ELBOWS. DUCT TO RUN VERTICALLY FROM EXHAUST PATH TO A POINT ABOVE CEILING INSULATION. PROVIDE SUPPORTS AS NECESSARY.

LEGEND	
⊕	DUPLEX RECEPTACLE 20A. 10'A.F.F.
⊕	DUPLEX RECEPTACLE 20A 40'A.F.F. GROUND FAULT
⊕	QUICK RECEPTACLE 8A'A.F.F.
▶	TELEPHONE JACK
⊕	DISCONNECT - FIRED
⊕	SINGLE POLE SWITCH 15A 40'A.F.F.
⊕	THREE WAY SWITCH 15A 40'A.F.F.
⊕	SINGLE POLE SWITCH 15A 40'A.F.F. WITH SIGNAL LAMP ON PLATE.
⊕	BATHROOM VENTILATOR
⊕	FLUORESCENT FIXTURE - LETTER DENOTES TYPE
⊕	INCANDESCENT FIXTURE - LETTER DENOTES TYPE
⊕	EMERGENCY LIGHT
⊕	FLUORESCENT FIXTURE - LETTER DENOTES TYPE
⊕	RESISTANCE HEATER WITH INTEGRAL CONTROL
⊕	ELECT. WATER HEATER - BY MECH. CONTRACTOR. ELECT. CONTRACTOR TO PROVIDE POWER & DISCONNECT.
⊕	REMOTE MOTOR CONTROL BOX

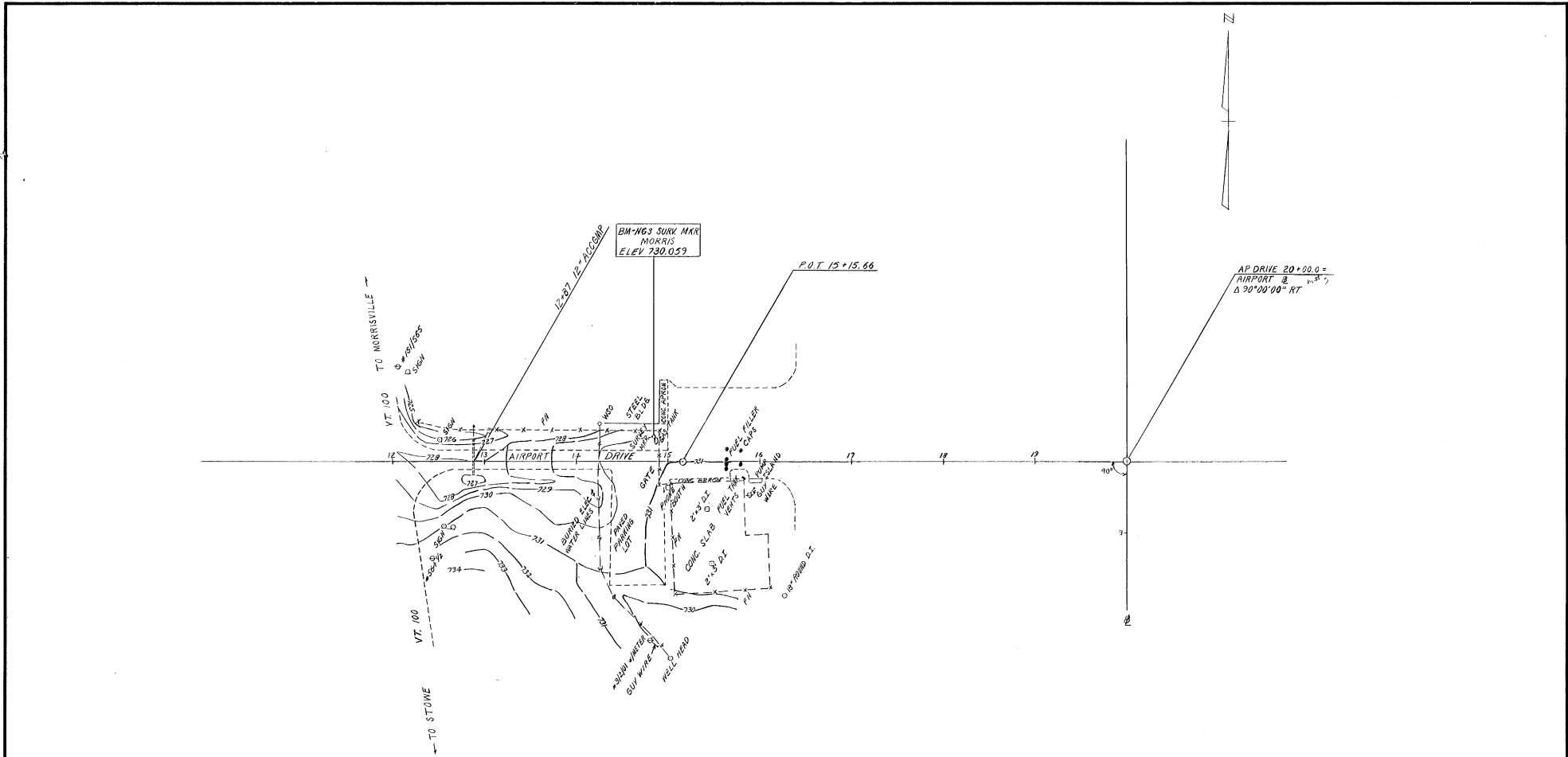
PANEL "MDP" WESTINGHOUSE TYPE Q10P, RECESS MTD 120/240 VAC 3 WIRE 3/4 225 AMP W/ 100 AMP MAIN BRK : CIRCUIT BREAKS 10,000 AIC			
CIRCUIT NUMBER	AMPS	POLES	REMARKS
1	20	1	RECEPTACLES OFFICE & RECEPT.
2	20	1	RECEPTACLES VENDING
3	20	1	RECEPTACLES SEATING & LOBBY
4	20	1	RECEPTACLES SEATING & LOBBY
5	20	1	RECEPTACLES JAN. & TOILET
6	20	1	JAN. & TOILETS LIGHTING
7	20	1	LIGHTING VESTIBULES & VENDING
8	20	1	LOBBY LIGHTING
9	20	1	LOBBY LIGHTING
10	20	1	SEATING/OFFICE/RECEPT FURNACE
11	20	2	RESISTANCE HEATERS
12	20	1	WATER HEATER
13	20	1	WELL PUMP
14	20	1	SITE LIGHTING
15-20	20	1	SPARES
21-24	-	-	-

STATE OF VERMONT
 DIVISION OF STATE BUILDINGS
 AGENCY OF ADMINISTRATION
 MONTPELIER, VERMONT

ELECTRICAL PLAN
 NEW TERMINAL BUILDING
 MORRISVILLE/STOWE STATE AIRPORT
 MORRISVILLE VERMONT

DATE: JULY 6, 1983
 SCALE: 1/4" = 1'-0"
 DRAWN BY: C.W.S.
 APPROVED BY:

REVISIONS:
 DWG. NO. E-1
 10 OF 10



DATUM
 VERTICAL NGVD 1929
 HORIZONTAL NAD 1927

SURVEYED BY CARLSON DATE JUN '82
 DRAWN BY MCCLORE DATE JUN '82
 TRACED BY MCCLORE DATE JUN '82
MORRISVILLE-STOWE
STATE AIRPORT
 PROJ. AIR No. 23-2018
 SHEET OF