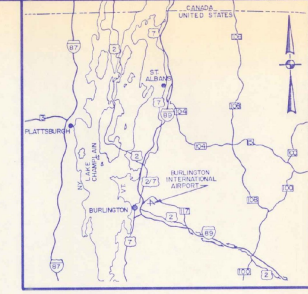


VICINITY MAP
FEET 0 2000 4000 6000
SCALE: 1" = 2000'



LOCATION MAP
MILES 0 10 20
SCALE: 1" = 10 MILES (APPROX.)

CITY OF BURLINGTON VERMONT

BURLINGTON INTERNATIONAL AIRPORT

INSTALL EMERGENCY GENERATOR

AIP PROJECT NO. 3-50-0005-13

AIR 03-2068 ~~X7~~

JUNE 1988

MAJOR ITEM QUANTITIES

ITEM NO.	DESCRIPTION	UNIT
3-1	UNDERGROUND FUEL OIL STORAGE TANK	LUMP SUM
7-1	INSTALL DIESEL ENGINE/GENERATOR	LUMP SUM

INDEX TO DRAWINGS

DWG. NO.	TITLE	SHT. NO.
1	TITLE SHEET	1 OF 7
2	GENERAL PLAN	2 OF 7
3	FUEL TANK INSTALLATION AND MISC. DETAILS	3 OF 7
4	VENTILATION, PIPING AND DETAILS	4 OF 7
5	DEMOLITION PLAN - LFG. AND RECP. PLAN	5 OF 7
6	POWER PLAN	6 OF 7
7	ONE LINES AND ELEMENTARIES	7 OF 7

REGULATORY STATEMENT REGARDING COMPLIANCE
These plans and specifications have been prepared to the best of my knowledge and belief, in accordance with current FAA Advisory Circulars as listed in AC 05-222, Chapter 1, Advisory Circulars. Certain items (including, but not limited to, items for which the FAA is not responsible) are shown on these drawings. Some operations items and the area were approved by FAA letter dated _____ and are included in the project "MANUAL PRELIMINARY" set, official project documents.
HOYLE, TANNER & ASSOCIATES, INC.
BY: _____ DATE: 6/8
Registration No. _____

CITY OF BURLINGTON, VERMONT

VERMONT AGENCY OF TRANSPORTATION

U.S. DEPARTMENT OF TRANSPORTATION
FEDERAL AVIATION ADMINISTRATION
NEW ENGLAND REGION

CITY OF BURLINGTON, VERMONT
BURLINGTON INTERNATIONAL AIRPORT

INSTALL EMERGENCY GENERATOR

TITLE SHEET

APPROVED _____
DIRECTOR OF AVIATION
DATE _____
APPROVED _____
DATE _____

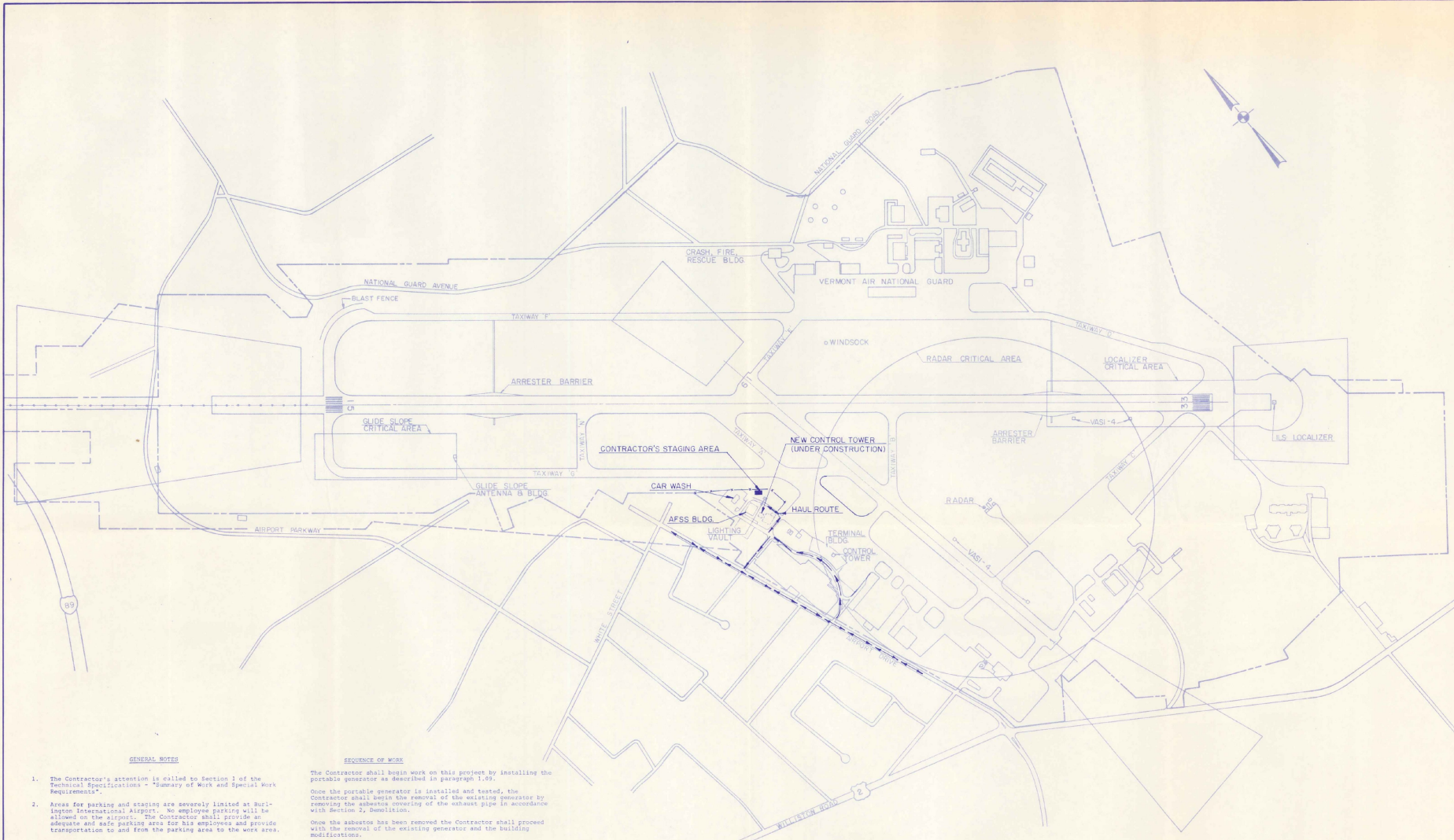
APPROVED _____
SECRETARY OF TRANSPORTATION
DATE _____
APPROVED _____
DIRECTOR OF ENGINEERING & CONSTRUCTION
DATE _____

APPROVED _____
MANAGER OF AIRPORT ENGINEERING & SAFETY BRANCH
DATE _____
APPROVAL SUBJECT TO COMMENTS AND RECOMMENDATIONS
IN LETTERS.
DATE _____

HTA Hoyle, Tanner & Associates, Inc.
engineers/architects/planners/surveyors
5 COMMERCE PARK NORTH BEDFORD, NH
in association with:
ABR Alonzo B. Reed, Inc.
architects/engineers/planners
12 FARNSWORTH ST. BOSTON, MA

SCALE: AS SHOWN	PROJECT NO. 37717	DRAWING NO. 1
DATE: JUNE 1988	SHEET OF 7	
DES. BY: JBD	DR. BY: CBB	CHKD. BY: JBD

AIP 3-50-0005-13
AIR 03-2068
1988



GENERAL NOTES

1. The Contractor's attention is called to Section 1 of the Technical Specifications - "Summary of Work and Special Work Requirements".
2. Areas for parking and staging are severely limited at Burlington International Airport. No employee parking will be allowed on the airport. The Contractor shall provide an adequate and safe parking area for his employees and provide transportation to and from the parking area to the work area.

MAINTENANCE OF THE EXISTING AIRFIELD LIGHTING:

All existing lighting systems on the airport facilities which are open to aircraft shall be operational each night and during inclement weather throughout the construction period.

It shall be the responsibility of the Contractor to check the operation of the existing lights each day, to notify the Engineer and the Operations Coordinator of any problem and make any repairs necessary due to his operations.

The Contractor shall furnish, install, and maintain a 50 KW, 120/240 VPH, portable engine generator and connect this generator to the existing transfer switch to automatically provide power to the airfield lighting systems in case of the loss of commercial power.

It shall be the Contractor's responsibility to check the operation of the generator each day to insure that generator will operate the airfield lighting in an emergency.

The portable generator shall be installed prior to any work on the existing generator and shall remain in place until the new generator is installed, tested, and accepted. The Contractor shall furnish and install all materials necessary to install the temporary generator and make any temporary connections to keep the existing airfield lighting operational until the new generator is installed, tested and accepted.

SEQUENCE OF WORK

The Contractor shall begin work on this project by installing the portable generator as described in paragraph 1.09.

Once the portable generator is installed and tested, the Contractor shall begin the removal of the existing generator by removing the asbestos covering of the exhaust pipe in accordance with Section 2, Demolition.

Once the asbestos has been removed the Contractor shall proceed with the removal of the existing generator and the building modifications.

The Contractor shall remove the existing above ground and underground fuel tanks in accordance with Section 2, Demolition. The new underground fuel tank will be installed in approximate the same location as the existing underground tank.

The Contractor shall conduct his operations in such a manner as to maintain access at all times to the rental car parking lots and car wash which are adjacent to the lighting vault.

SMULTANEOUS CONSTRUCTION

The Contractor is hereby notified that contractor(s) for the Federal Aviation Administration will be constructing a new Air Traffic Control Tower adjacent to the Automated Flight Services Station and Contractor(s) for Burlington International Airport will be constructing the north end of the Terminal Apron. The Contractor on both projects will be working in and around the lighting vault.

DISPOSAL AREA

No disposal of materials from this project will be permitted on airport property. The Contractor shall legally dispose of all materials off airport property in all accordance with Section 2, Demolition.

ENGINEER/ARCHITECT

REV	DESCRIPTION	DATE	BY	CHK'D BY

PROJECT NO
37717

Hoyle, Tanner & Associates, Inc.
ENGINEER ARCHITECT
100 North Bedford Road, Suite 100
Burlington, Vermont 05401
ALONZO B. REED, INC.
A PROFESSIONAL CORPORATION
12 Park Street, Burlington, VT 05401
SCALE: T-400 DATE: JUNE, 1988
DR. BY: HWW
CHKD BY: JBD
CND BY: JBD

BURLINGTON INTERNATIONAL AIRPORT
SOUTH BURLINGTON, VERMONT
INSTALL EMERGENCY GENERATOR
GENERAL PLAN

DRAWING NO.
2
SHEET 2 OF 7

DO NOT SCALE DRAWING

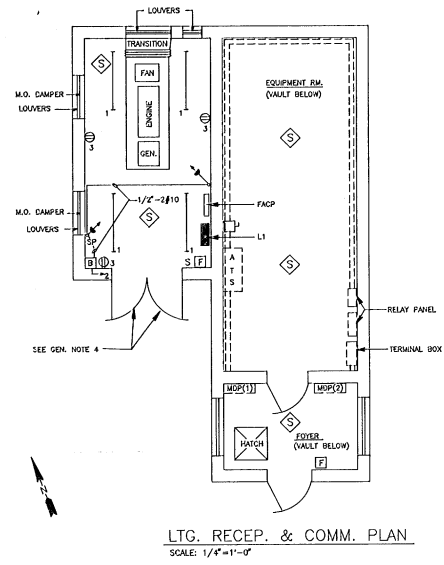
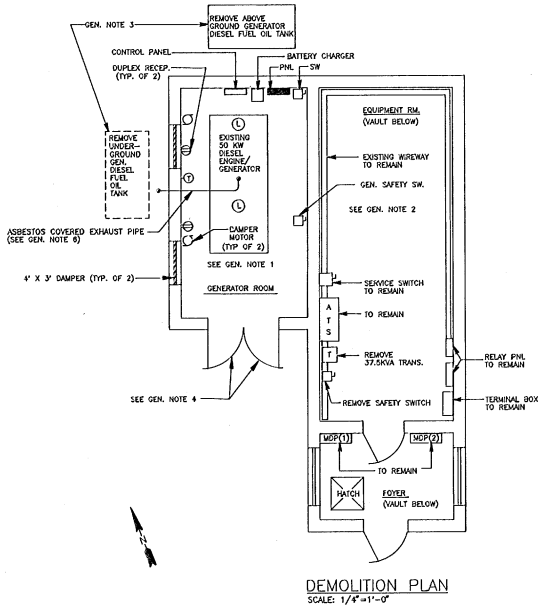
PROJECT NO.	37717
DATE	JUNE, 1988
DES. BY	PAH
CHK. BY	WDJ/OC
DATE	JUNE, 1988
SCALE	AS SHOWN

PROJECT NO. 37717
 DATE: JUNE, 1988
 DES. BY: PAH
 CHK. BY: WDJ/OC
 SCALE: AS SHOWN

BURLINGTON INTERNATIONAL AIRPORT
 SOUTH BURLINGTON, VERMONT
 GENERAL ELECTRICAL CONTRACTORS
**DEMOLITION PLAN -
 LTG. & RECP. PLAN**
 L. J. TANNER

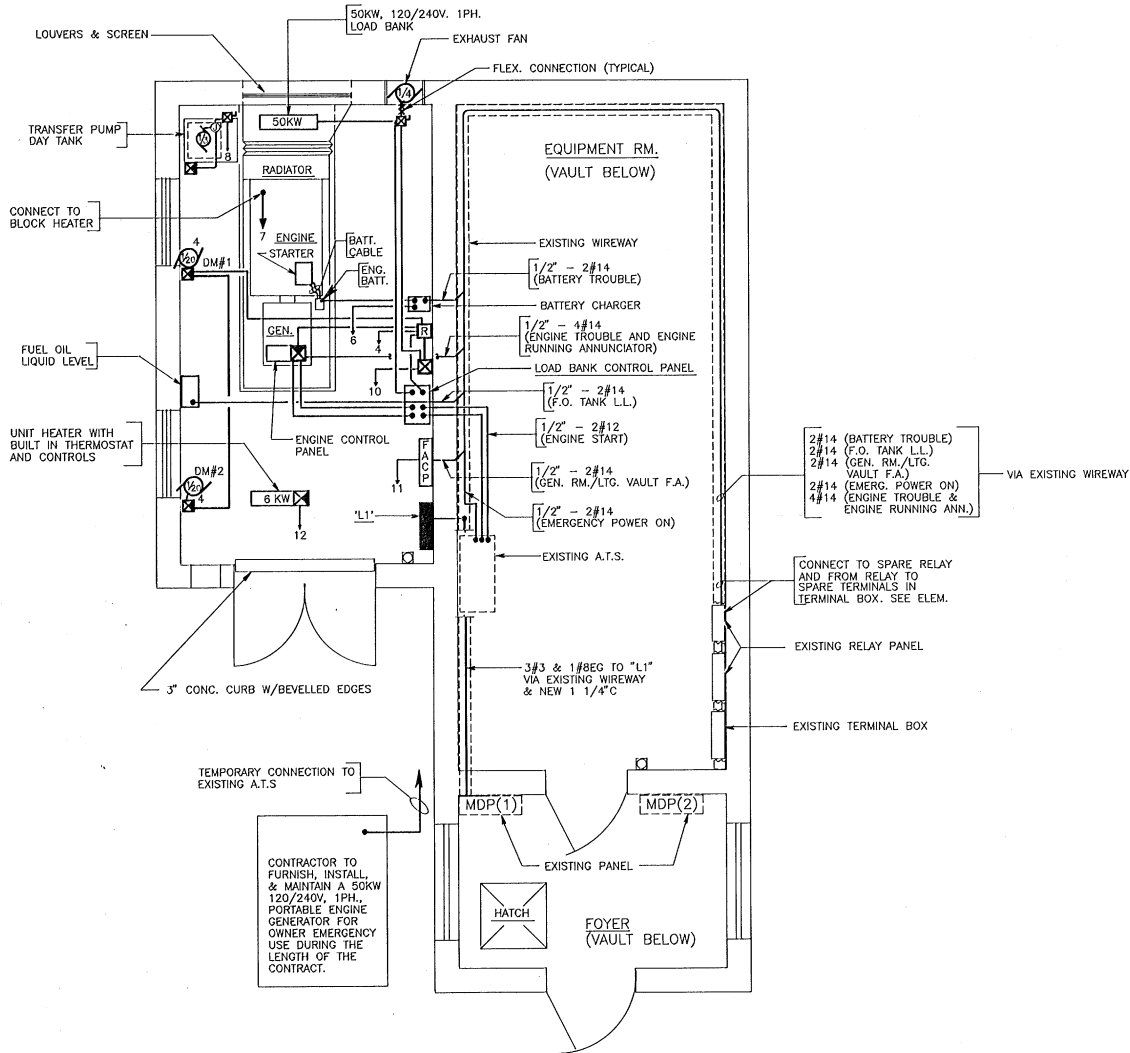
GENERAL NOTES

1. REMOVE EXISTING ENGINE/GENERATOR, PAD, PANEL, BATTERY CHARGE, CONTROL PANEL, LIGHTING FIXTURES, RECEPTACLES, SWITCHES, BRANCH CIRCUITS, DAMPERS, DAMPER MOTORS, CONTROL CONDUIT, FEEDERS AND FEEDER CONDUITS FROM GENERATOR ROOM. (SEE ONE LINE DIAG. SH. 7)
2. REMOVE EXISTING GENERATOR SAFETY SWITCH, TRANSFORMER, FEEDER AND CONDUITS. REMOVE GENERATOR ROOM PANEL FEEDER FROM EXISTING WIRE WAY. SERVICE SWITCH, ATS, MOP (1), MOP (2) AND OTHER AIRFIELD LIGHTING EQUIPMENT NOT SHOWN SHALL REMAIN. (SEE ONE LINE DIAG. SH. 7)
3. EXISTING GENERATOR FUEL OIL TANKS, PIPING AND PETROLEUM CONTAMINATED SOIL SHALL BE REMOVED AND PROPERLY DISPOSED OF IN ACCORDANCE WITH EPA GUIDELINES AND REGULATIONS CERTIFIED REPORTS OF ROUTING AND FINAL DISPOSAL OF EQUIPMENT.
4. CONTRACTOR SHALL REMOVE TWO EXISTING 3' X 8' LOUVERED DOORS. DOOR FRAME SHALL REMAIN FOR RE-USE. CONTRACTOR SHALL FURNISH AND INSTALL TWO NEW FIRE RATED DOORS.
5. WHEN REMOVING THE EXISTING GENERATOR AND CONCRETE PAD, DO NOT REMOVE THE EXISTING SYSTEM GROUNDING CONDUCTOR. IT WILL BE RECONNECTED TO THE NEW GENERATOR.
6. EXISTING ASBESTOS COVERED EXHAUST PIPE SHALL BE REMOVED AND PROPERLY DISPOSED OF IN ACCORDANCE WITH EPA AND LOCAL AUTHORITIES REGULATIONS. THIS INCLUDES CERTIFIED REPORTS OF ROUTING AND FINAL DISPOSAL OF MATERIAL.
7. ALL CONDUITS WITH 60 HZ POWER CIRCUITS SHALL HAVE A GREEN EQUIPMENT GROUND (EG) CONDUCTOR SIGNAL IN ACCORDANCE WITH THE IEC.



MAINS: 100 AMP		BUS: <input type="checkbox"/> AL <input checked="" type="checkbox"/> CU		MOUNTING: <input type="checkbox"/> FLUSH <input checked="" type="checkbox"/> SURFACE		CHARACTERISTICS: 120/240 VOLTS		LOADS:	
<input type="checkbox"/> MLO		<input checked="" type="checkbox"/> MAIN CKT BKR		<input type="checkbox"/> TOP <input checked="" type="checkbox"/> BOTTOM		1 PHASE 3 WIRE		REMARKS: SHORT CKT I.C. OF BRKS: 10,000 AMPS, SYM. MIN.	
<input type="checkbox"/> BOTTOM		<input type="checkbox"/> FR 100		PANEL: L1		POLES 2		CLASS N.A.	
<input checked="" type="checkbox"/> SOLID NEUT (ISOLATED)		<input type="checkbox"/> GND BUS		IR 100		CLASS N.A.			

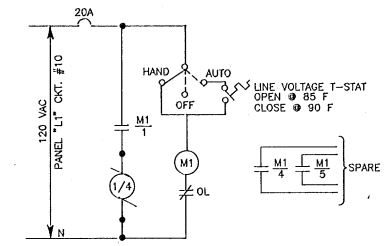
CKT NO.	CKT BKR			ISOLATED NEUTRAL			GROUND BUS			CKT BKR			CKT NO.			
	P	F	T	W	C	COND	W	C	COND	P	F	T				
1	1	100	20	ROOM LIGHTING	12AWG	3/4"				3/4"	12AWG	EMERGENCY BATTERY	20	100	1	2
3	1	100	20	ROOM RECEPTACLE	12AWG	3/4"				3/4"	12AWG	M.O. DAMPERS	20	100	1	4
5	1	100	20	ROOM RECEPTACLE	12AWG	3/4"				3/4"	12AWG	BATTERY CHARGER	20	100	1	6
7/9	2	100	30	ENGINE BLOCK HEATER	10AWG	3/4"				3/4"	12AWG	DAY TANK FUEL OIL PUMP	20	100	1	8
11	1	100	20	FIRE ALARM CONTROL PANEL	12AWG	3/4"				3/4"	12AWG	EXHAUST FAN	20	100	1	10
13	1	100	20	SPARE						3/4"	10AWG	UNIT HEATER 8 KW	30	100	2	12/14
15	1	100	20	SPARE								SPARE	20	100	1	16
17	1			SPARE								SPARE	20	100	1	18
19	1			SPACE								SPACE				20
21	1			SPACE								SPACE				22
23	1			SPACE								SPACE				24



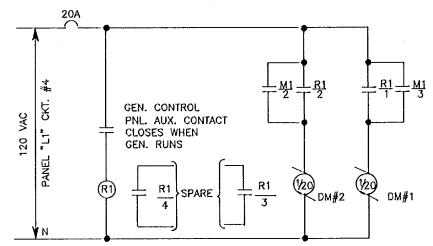
POWER PLAN
SCALE: 1/2" = 1' - 0"

ENGINEER/ARCHITECT	PROJECT NO. 37717
	DATE: JUNE, 1988
	SCALE: AS SHOWN
Hoyle, Tanner & Associates, Inc. <small>INCORPORATED IN VERMONT</small> Five Commerce Park North • Bedford NH 03112 • (603) 666-5555 Computer	
DES. BY PAH	CHKD. BY DGF
DATE: JUNE, 1988	DATE: JUNE, 1988
BY: PAH	BY: WD/JOC
DATE: JUNE, 1988	DATE: JUNE, 1988
SCALE: AS SHOWN	SCALE: AS SHOWN
BURLINGTON INTERNATIONAL AIRPORT SOUTH BURLINGTON, VERMONT INSTALL EMERGENCY GENERATOR POWER PLAN EL-TRCAL	
DRAWING NO. 6	SHEET 6 OF 7

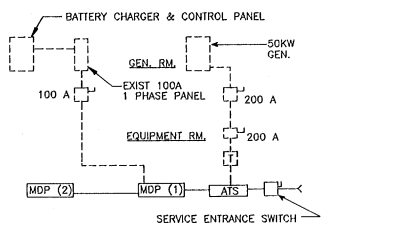
DO NOT SCALE DRAWING



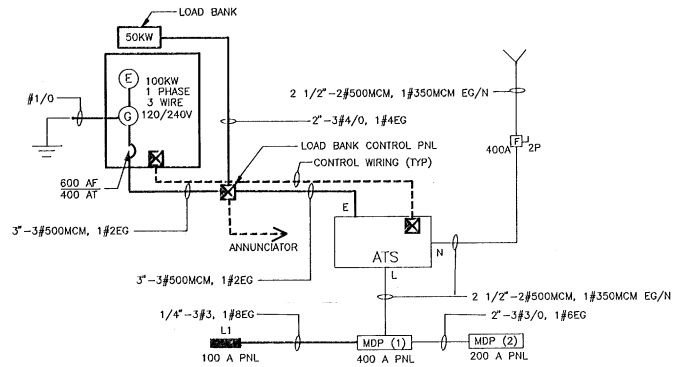
EXHAUST FAN - ELEMENTARY
 SCALE: NONE



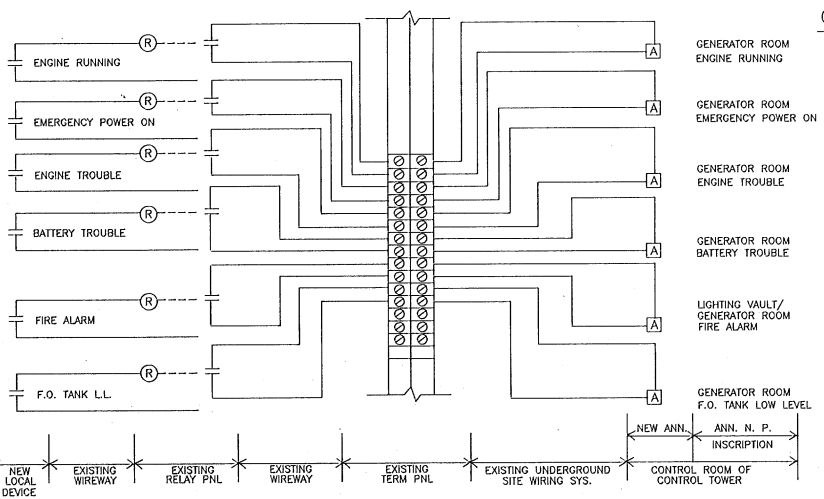
DAMPER MOTORS - ELEMENTARY
 SCALE: NONE



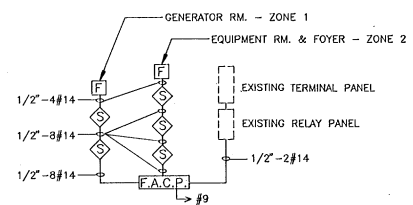
DEMOLITION - ONE LINE
 SCALE: NONE
 --- EQUIPMENT TO REMAIN
 - - - - - EQUIPMENT TO BE REMOVED



ONE LINE
 SCALE: NONE
 --- EXISTING
 - - - - - NEW



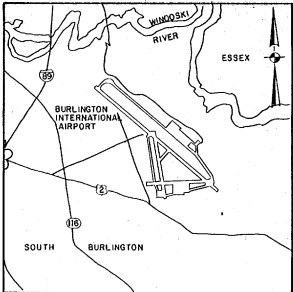
ANNUNCIATOR WIRING DIAGRAM
 SCALE: NONE



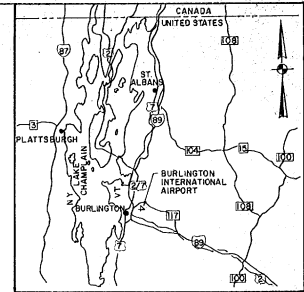
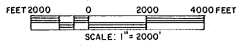
FIRE ALARM RISER DIAGRAM
 SCALE: NONE

LEGEND

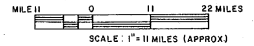
- Ⓛ₃ DUPLEX RECEPTACLE NEMA CONF. 5-20R, SURFACE MOUNTED 3'-6" AFF. NUMBER DENOTES CIRCUIT NO.
- ATS AUTOMATIC TRANSFER SWITCH
- MDP(1) MAIN DISTRIBUTION PANEL
- B 12V EMERGENCY BATTERY UNIT WITH SHELF MOUNTED 7'-0" AFF
- 25WATT 12V SEAL BEAM EMERGENCY BATTERY LIGHT, MOUNTED 7'-0" AFF
- S SINGLE POLE SWITCH FOR ROOM LIGHTS. MOUNTED 4'-0" AFF
- SP SINGLE POLE SWITCH FOR EMERGENCY LIGHTS. TOGGLE HANDLE LIGHTS WHEN SWITCH IS OFF. MOUNTED IN A HANDY BOX 5'-0" AFF (UNDER EMERGENCY BATTERY).
- 4FT. SURFACE MOUNTED INDUSTRIAL FLUORESCENT LIGHTING FIXTURE WITH PORCELAIN REFLECTOR, END CAPS, 120V HIGH POWER FACTOR BALLAST & TWO F40CW LAMPS.
- Ⓜ 1/3 A.C. MOTOR - 1/3 INDICATES HORSEPOWER
- Ⓜ MAGNETIC MOTOR STARTER, 600V, 3P, NEMA SIZE 0, IN NEMA TYPE 1 ENCLOSURE, WITH H-0-A IN COVER, 120V COIL & OVERLOAD.
- Ⓜ CONTROLS BY EQUIPMENT MANUFACTURER
- Ⓜ LINE VOLTAGE THERMOSTAT RATED 10A 120V
- Ⓜ CONTACT - NORMALLY OPEN
- Ⓜ RELAY
- Ⓜ 8" X 8" X 6" NEMA TYPE 1 ENCLOSURE CONTAINING RELAY R1 RATED AT 300V, 10A, 4 N.O. CONTACTS, AND 120V COIL.
- Ⓜ MANUAL MOTOR STARTER
- FACP FIRE ALARM CONTROL PANEL-4 ZONE
- S FIRE ALARM SMOKE DETECTOR-PHOTO ELECTRIC TYPE WITH AUDIO BASE.
- F FIRE ALARM MANUAL PULL STATION MOUNT 5'-0" AFF
- Ⓜ STORED PRESSURE HALON 1211 WALL MOUNTED FIRE EXTINGUISHER, MINIMUM RATED 10 B.C.
- EG EQUIPMENT GROUND
- N NEUTRAL
- T TRANSFORMER DRY TYPE
- HOME RUN TO PANEL LI NUMERICAL DENOTES CKT. NO.
- A ANNUNCIATOR DROP
- SAFETY SWITCH
- Ⓜ-E ENGINE/GENERATOR SET



VICINITY MAP



LOCATION MAP



CITY OF BURLINGTON VERMONT BURLINGTON INTERNATIONAL AIRPORT

INSTALL 8' SECURITY FENCE

AIP PROJECT NO. 3-50-0005-13
CONTRACT II
SEPTEMBER, 1988

MAJOR ITEM QUANTITIES

ITEM NO.	DESCRIPTION	UNIT	AS BUILT
F-162	8' CHAIN LINK FENCE	2500 L.F.	2568 L.F.
F-162	COILED BARBED WIRE	L.F.	0 L.F.

INDEX TO DRAWINGS

DWG. NO.	TITLE	SHT. NO.
1	TITLE SHEET	1 OF 2
2	GENERAL PLAN	2 OF 2

RECORD DRAWINGS
I CERTIFY THAT ALL WORK INDICATED ON THIS DRAWING HAS BEEN COMPLETED AS SHOWN.
SIGNED: *[Signature]*
DATE: *[Signature]* JAN 29

DESIGNER'S STATEMENT REGARDING COMPLIANCE
THESE PLANS AND SPECIFICATIONS HAVE BEEN PREPARED TO THE BEST OF MY KNOWLEDGE AND BELIEF, IN ACCORDANCE WITH CURRENT FAA ADVISORY CIRCULARS.
BY: *[Signature]* DATE: *[Signature]*
BURLINGTON INTERNATIONAL AIRPORT

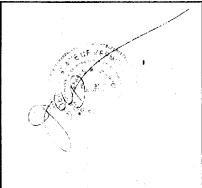
CITY OF BURLINGTON, VERMONT

APPROVED _____
DIRECTOR OF AVIATION

DATE _____

APPROVED _____
CHAIRMAN, BOARD OF AIRPORT COMMISSIONERS

DATE _____



U.S. DEPARTMENT OF TRANSPORTATION
FEDERAL AVIATION ADMINISTRATION
NEW ENGLAND REGION

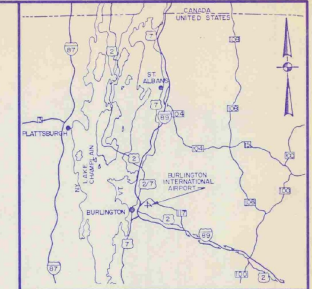
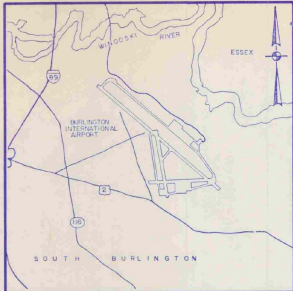
APPROVED _____
MANAGER OF AIRPORT ENGINEERING & SAFETY BRANCH

DATE _____

APPROVAL SUBJECT TO COMMENTS AND RECOMMENDATIONS IN LETTERS

DATED _____

CITY OF BURLINGTON VERMONT



BURLINGTON INTERNATIONAL AIRPORT

INSTALL EMERGENCY GENERATOR

AIP PROJECT NO. 3-50-0005-13

AIR 03-2068⁷

JUNE 1988

MAJOR ITEM QUANTITIES

ITEM NO.	DESCRIPTION	UNIT
3-1	UNDERGROUND FUEL OIL STORAGE TANK	LAMP SUM
7-1	INSTALL DIESEL ENGINE/GENERATOR	LUNG SUM

INDEX TO DRAWINGS

DWG. NO.	TITLE	SHT. NO.
1	RIFLE SHEET	1 OF 7
2	GENERAL PLAN	2 OF 7
3	FUEL TANK INSTALLATION AND MISC. DETAILS	3 OF 7
4	VENTILATION, PIPING AND DETAILS	4 OF 7
5	DEMOLITION PLAN - LG. AND RECP. PLAN	5 OF 7
6	POWER PLAN	6 OF 7
7	ONE LINES AND ELEMENTARIES	7 OF 7

I HEREBY CERTIFY THAT ALL WORK INDICATED ON THIS DRAWING HAS BEEN COMPLETED AS SHOWN.

SIGNED: Richard S. Fayer
DATE: 10/19/89

OCT 10 1989

DESIGNER'S STATEMENT REGARDING COMPLIANCE

These plans and specifications have been prepared to the best of my knowledge and belief, in accordance with current FAA Advisory Circulars as listed on the project. Change to Advisory Circular Circular 1508-10-11. Items originating from the FAA have been approved by FAA letter's dated from the FAA and included in the project engineering reports. (See 200708-0001) Official project documents.

WORLD, PANNER & ASSOCIATES, INC.

BY: _____ DATE: _____
Registration No. _____

"AS BUILT"

CITY OF BURLINGTON, VERMONT APPROVED _____ DIRECTOR OF AVIATION DATE _____ APPROVED _____ DATE _____	VERMONT AGENCY OF TRANSPORTATION APPROVED _____ SECRETARY OF TRANSPORTATION DATE _____ APPROVED _____ DIRECTOR OF ENGINEERING & CONSTRUCTION DATE _____	U.S. DEPARTMENT OF TRANSPORTATION FEDERAL AVIATION ADMINISTRATION NEW ENGLAND REGION APPROVED _____ MANAGER OF AIRPORT ENGINEERING & SAFETY BRANCH DATE _____ APPROVAL SUBJECT TO COMMENTS AND RECOMMENDATIONS IN LETTERS. DATE: _____	REVISED "AS BUILT"	M.V. R.P. S.L. L.C. P.P. DR. BY O.K. BY APP. BY DATE	CITY OF BURLINGTON, VERMONT BURLINGTON INTERNATIONAL AIRPORT INSTALL EMERGENCY GENERATOR
			HIA Hoyle, Tanner & Associates, Inc. engineers/architects/planners/surveyors 6 COMMERCIAL PARK NORTH • BEDFORD, NH	TITLE SHEET	
In association with: ABR Alonzo B. Reed, Inc. architects/engineers/planners 12 FARNSWORTH ST. • BOSTON, MA			SCALE: AS SHOWN DATE: JUNE 1988	PROJECT NO. 37717	DRAWING NO. 1
			DES. BY: JBD DR. BY: CBB O.K. BY: JBD	SHEET OF 1 7	

ENGINEER/ARCHITECT



REVISED "AS-BUILT"	DATE
BY	DATE
BY	DATE
BY	DATE
DESCRIPTION	

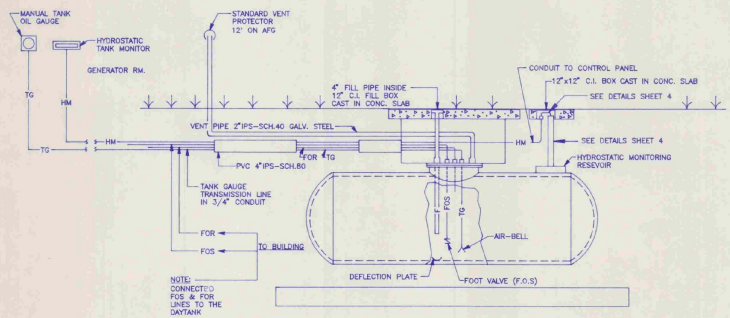
PROJECT NO.
37717

Hoyle, Tamer & Associates, Inc. **HTA**
 ENGINEERING ARCHITECTS
 Five Commerce Park North • Bedford, NH 03102 • (603) 869-5555
 COMPANIES

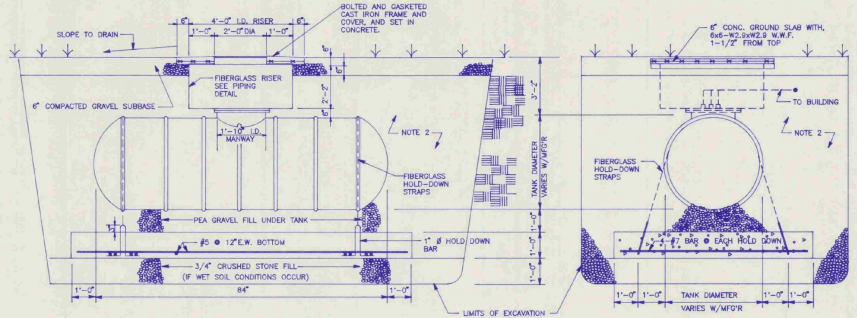
BURLINGTON INTERNATIONAL AIRPORT
 SOUTH BURLINGTON, VERMONT
**FUEL TANK INSTALLATION
 & MISC. DETAILS**
 ARCHITECTURAL/STRUCTURAL

DRAWING NO.
3

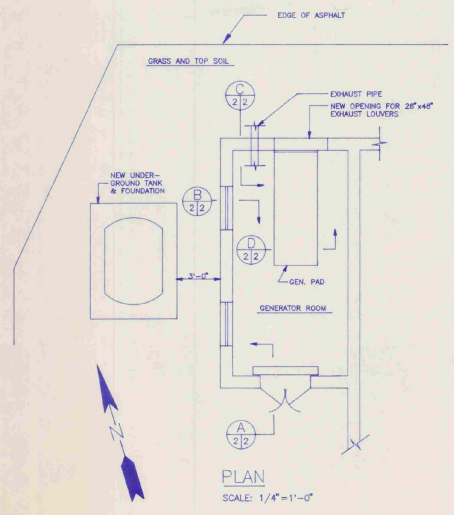
SHEET 3 OF 7



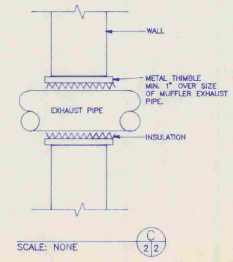
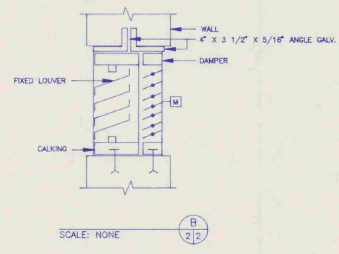
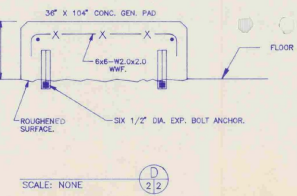
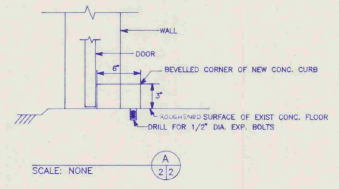
MECHANICAL PIPING DETAIL
NO SCALE



SIDE VIEW
END VIEW
UNDERGROUND FUEL OIL TANK DETAILS
NO SCALE



PLAN
SCALE: 1/4" = 1'-0"



GENERAL NOTES

1. NEW TANK IS BE 550 GAL. MINIMUM; DOUBLE WALL FIBERGLASS. PROVIDED NEW PIPING FROM TANK TO GENERATOR ROOM
2. BACKFILLED ENTIRE EXCAVATION, EXCEPT WHERE OTHERWISE NOTED, WITH 1/8" TO 3/8" PEA GRAVEL.
3. CONCRETE HAS:
 - A. MIN. COMPR. STR. OF 3000 PSI AT 28 DAYS
 - B. 5-7% ENTRAINED AIR.
 - C. FLOAT FINISH FOR SLABS, EXCEPT PAVEMENT
 - D. CONFORMANCE TO AC1301 RECEIVED BURLAP DRAG FINISH.
4. CUT AND PATCHED EXISTING CONCRETE WALLS AS REQUIRED FOR NEW PIPING.
5. DISSIMILAR METAL PIPE CONNECTIONS MADE BY DIELECTRIC UNIONS.
6. FUEL OIL SUPPLY & RETURN IS BE COPPER TUBING TYPE K.
7. FILL PIPE IS SCHED. 40 GALV. STEEL

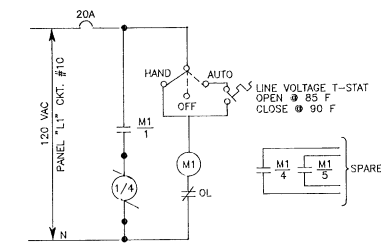
LEGEND

- FOS— FUEL OIL SUPPLY
- FOR— FUEL OIL RETURN
- F— FILL PIPE
- V— VENT PIPE
- TG— TANK GAUGE LINE
- HM— HYDROSTATIC MONITORING

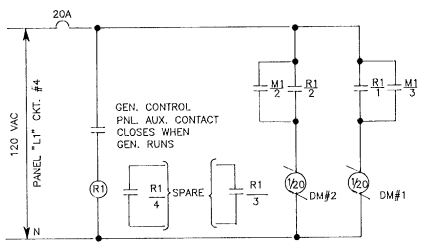
I HEREBY CERTIFY THAT ALL WORK INDICATED ON THIS DRAWING HAS BEEN COMPLETED AS SHOWN.
 SIGNED *Edward J. Fagan*
 DATE 10/9/88

"AS BUILT"

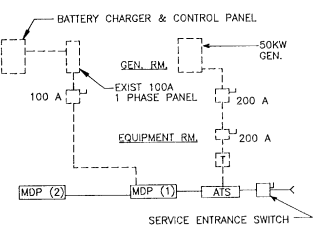
DO NOT SCALE DRAWING



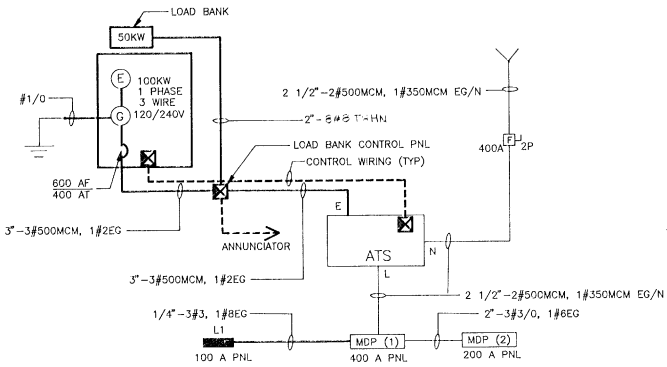
EXHAUST FAN - ELEMENTARY
 SCALE: NONE



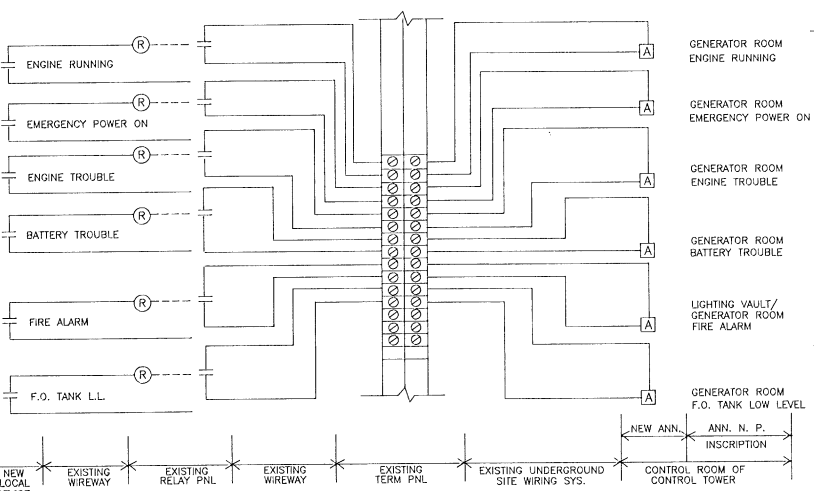
DAMPER MOTORS - ELEMENTARY
 SCALE: NONE



DEMOLITION - ONE LINE
 SCALE: NONE
 --- EQUIPMENT TO REMAIN
 - - - EQUIPMENT TO BE REMOVED



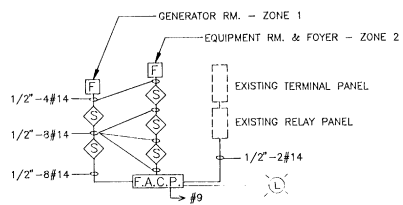
ONE LINE
 SCALE: NONE
 --- EXISTING
 --- NEW



ANNUNCIATOR WIRING DIAGRAM
 SCALE: NONE

LEGEND

- Ⓛ₃ DUPLEX RECEPTACLE NEMA CONF. 5-20R. SURFACE MOUNTED 3'-6" AFF. NUMBER DENOTES CIRCUIT NO.
- ATS AUTOMATIC TRANSFER SWITCH
- MDP(1) MAIN DISTRIBUTION PANEL
- B 12V EMERGENCY BATTERY UNIT WITH SHELF MOUNTED 7'-0" AFF
- 25WATT 12V SEAL BEAM EMERGENCY BATTERY LIGHT. MOUNTED 7'-0" AFF
- S SINGLE POLE SWITCH FOR ROOM LIGHTS. MOUNTED 4'-0" AFF
- SP SINGLE POLE SWITCH FOR EMERGENCY LIGHTS. TOGGLE HANDLE LIGHTS WHEN SWITCH IS OFF. MOUNTED IN A HANDY BOX 5'-0" AFF (UNDER EMERGENCY BATTERY).
- 4FT. SURFACE MOUNTED INDUSTRIAL FLUORESCENT LIGHTING FIXTURE WITH PORCELAIN REFLECTOR, END CAPS, 120V HIGH POWER FACTOR BALLAST & TWO F40CW LAMPS.
- 1/2 A.C. MOTOR - 1/3 INDICATES HORSEPOWER
- ⊗ MAGNETIC MOTOR STARTER, 600V, 3P, NEMA SIZE 0, IN NEMA TYPE 1 ENCLOSURE. WITH H-0-A IN COVER, 120V COIL & OVERLOAD.
- ⊗ CONTROLS BY EQUIPMENT MANUFACTURER
- Ⓣ LINE VOLTAGE THERMOSTAT RATED 10A 120V
- ⊥ R₁ CONTACT - NORMALLY OPEN
- Ⓡ RELAY
- Ⓡ 8" X 8" X 6" NEMA TYPE 1 ENCLOSURE CONTAINING RELAY R1 RATED AT 300V, 10A, 4 N.O. CONTACTS, AND 120V COIL.
- ⊗ MOTOR STARTER
- FAGP FIRE ALARM CONTROL PANEL-4 ZONE
- Ⓢ FIRE ALARM SMOKE DETECTOR-PHOTO ELECTRIC TYPE WITH AUDIO BASE.
- F FIRE ALARM MANUAL PULL STATION MOUNT 5'-0" AFF
- Ⓢ STORED PRESSURE HALON 1211 WALL MOUNTED FIRE EXTINGUISHER. MINIMUM RATED TO B.C.
- EG EQUIPMENT GROUND
- N NEUTRAL
- T TRANSFORMER DRY TYPE
- HOME RUN TO PANEL L1 NUMERICAL DENOTES CKT. NO.
- A ANNUNCIATOR DROP
- Ⓛ SAFETY SWITCH
- Ⓢ-E ENGINE/GENERATOR SET
- Ⓢ EXTERIOR FIRE ALARM LIGHT



FIRE ALARM RISER DIAGRAM
 SCALE: NONE

I HEREBY CERTIFY THAT ALL WORK INDICATED ON THIS DRAWING HAS BEEN COMPLETED AS SHOWN.
 SIGNED: *Richard S. Fife*
 DATE: 10/4/89

"AS BUILT"

Phase III
#090303-01



INITIALS

Hanger 4972 DONE

BURLINGTON VERMONT AGENCY OF TRANSPORTATION
PLANNING DIVISION

STATES, INC.

HOYLE TANNER

Hanger 4976

INITIALS

Vermont Agency of
Transportation
Phase III
#090303-01

Boeing
AIP 3-50-0005-13 1988

AIE 03-2067
1988
4/19/89 AS BUILT

Phase III
#090303-01



INITIALS

Hanger 4977^{ZONE}

STV - 1990
AIR 03-2067
AIP 3-50-0005-13

**VERMONT AGENCY OF TRANSPORTATION
PLANNING DIVISION**