

RECORD PLANS

CONTRACTOR: HEBERT EXCAVATION CORP. - WILLIAMSTOWN, VT
 RESIDENT ENGINEER: BOB PETERS
 CONSTRUCTION BEGAN: SEPTEMBER 5, 2000
 CONSTRUCTION COMPLETE: OCTOBER 13, 2000
 RECORD PLANS BY: BOB PETERS
 I HEREBY CERTIFY THAT ALL THE CONSTRUCTION REQUIRED BY THIS SET OF DRAWINGS HAS BEEN ACCOMPLISHED AS INDICATED HEREIN.
 BY Bob Peters RESIDENT ENGINEER
 DATE 03/29/04

NOTE: Any further information concerning final quantities, amounts or other details relative to this project may be found at Central Files in the electronic archives.

INDEX OF SHEETS

- 1 TITLE SHEET
- 2 GENERAL PROJECT LAYOUT
- 3 TYPICAL SECTIONS NOTES & DETAILS
- 4 MISCELLANEOUS DETAILS
- 5 TAXIWAY PROFILE/MARKING DIAGRAM
- 6 GEOMETRICS AND DRAINAGE PLAN PLAN
- 7 SEDIMENTATION AND EROSION CONTROL DETAILS
- 8 TAXIWAY CROSS SECTIONS

VAOT STANDARD DRAWINGS

- AP-11 TAXIWAY MARKING DETAILS
 E-107 DELINEATION BARRICADES AND DETOURS FOR CONSTRUCTION AREAS.
 E-107A BREAKAWAY BARRICADE DETAILS

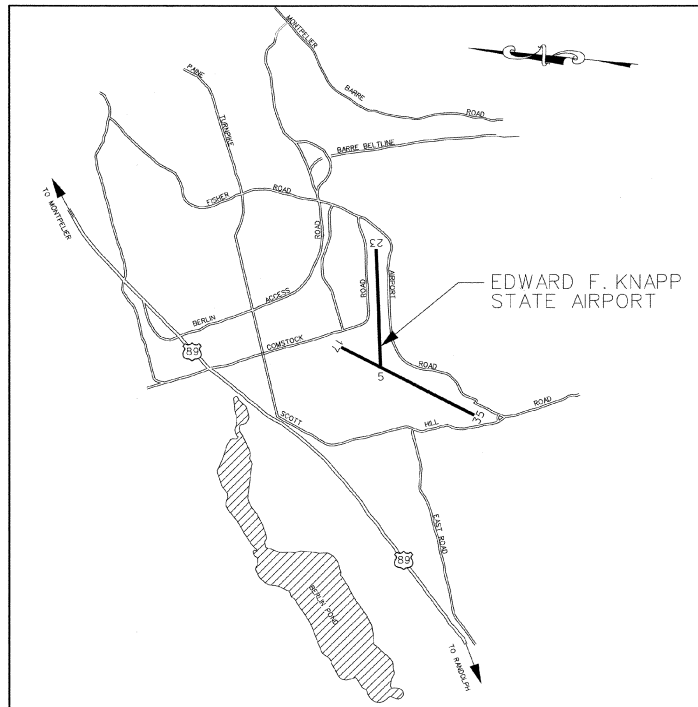
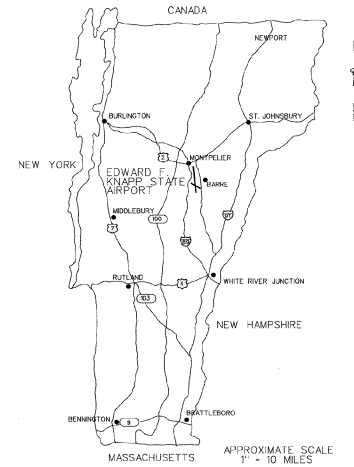
PROJECT QUANTITIES			
ITEM No.	DESCRIPTION	ESTIMATE	FINAL
203.15	COMMON EXCAVATION	2100 C.Y.	
203.16	ROCK EXCAVATION	25 C.Y.	
203.32	GRANULAR BORROW	1800 C.Y.	
203.40	FINE GRADE SUBGRADE	1200 S.Y.	
204.20	TRENCH EXCAVATION OF EARTH	220 C.Y.	
204.21	TRENCH EXCAVATION OF ROCK	25 C.Y.	
406.25	BITUMINOUS CONCRETE PAVEMENT	250 TONS	
601.0905	12" DIA CPEP	50 L.F.	
605.10	6" DIA. UNDERDRAIN	450 L.F.	
605.95	UNDERDRAIN FLUSHING BASINS	4 EA.	
608.25	ALL PURPOSE EXCAVATOR RENTAL - TYPE 1	10 HOURS	
609.10	DUST CONTROL WITH WATER	60 W GAL	
631.17	TESTING EQUIPMENT-BITUMINOUS	1 L.S.	
635.10	MOBILIZATION	1 L.S.	
646.215	6" YELLOW TAXIWAY STRIPE -MOD 1	950 L.F.	
649.11	GEOTEXTILE FOR ROADBED SEPARATOR	1200 S.Y.	
649.41	GEOTEXTILE FOR UNDERDRAIN TRENCH	500 S.Y.	
649.51	GEOTEXTILE FOR SILT FENCE	350 S.Y.	
651.15	SEED	30#	
651.18	FERTILIZER	220#	
651.20	AGRICULTURAL LIMESTONE	1 TON	
651.25	HAY MULCH	1 TON	
651.26	HAY BALES FOR EROSION CONTROL	25 EA.	
651.35	TOPSOIL	100 C.Y.	
654.10	EROSION MATTING	2500 S.Y.	
676.21	ELECTRICAL CONDUIT (2" DIA.)	200 L.F.	
854.04	P-209 CRUSHED AGGREGATE BASE	200 C.Y.	
864.04	L-108 CABLE TRENCH	200 L.F.	
864.05	L-108 I/C #8, L-824 C	200 L.F.	
864.06	L-108 BARE COUNTERPOISE CABLE #8	200 L.F.	
864.09	L-110 4 WAY X 4" DIA ELECTRICAL CONDUIT	52 L.F.	

STATE OF VERMONT
 AGENCY OF TRANSPORTATION



PROPOSED IMPROVEMENTS
 LOCATION: EDWARD F. KNAPP STATE AIRPORT
 BERLIN, VERMONT

DESCRIPTION: TO INCLUDE CONSTRUCT TAXIWAY FROM FUELING APRON
 TO RUNWAY 5-23 (35 FEET X 237 L.F.)
 E.A. _____



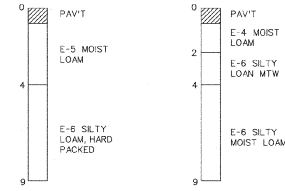
LOCATION MAP
 APPROXIMATE SCALE : 1" = 1 MILE

A.A.I.A. OF 1982 SECTION 509(a) ASSURANCES
 IN COMPLIANCE WITH THE AIRPORT AND AIRWAYS IMPROVEMENT ACT OF 1982, SECTION 509 (a) AND THE SPONSOR'S CERTIFICATION, DATED _____, THESE PLANS AND SPECIFICATIONS HAVE BEEN PREPARED IN ACCORDANCE WITH CURRENT FAA STANDARDS IDENTIFIED IN FAR PART 152.
 By URS Greiner, Inc. DATE 12 May 2000

STANDARD NOTE
 These plans are subject to such engineering changes as may required by the Federal Aviation Administration or the Director of Maintenance and Aviation.
 Construction is to be carried on in accordance with these plans and the standard specification for Construction, dated 1990, as approved by the Vermont Agency of Transportation on December 5, 1989, for use on this project, including all subsequent revisions and such revised specifications and special provisions as are incorporated in these plans.

STATE OF VERMONT
 APPROVED David C. Sica
 DIRECTOR, MAINTENANCE AND AVIATION
 DATE May 16, 2000

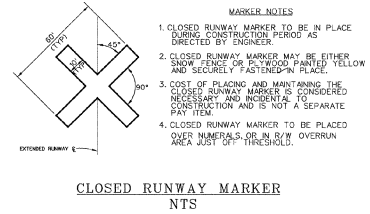
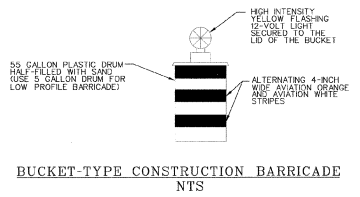
BORING DATA



B-18
MAY, 1974

B-5
MAY, 1974

R/W 5-23 STA. 148+60.55
R/W 17-35 STA. 49+50.23



- MARKER NOTES**
1. CLOSED RUNWAY MARKER TO BE IN PLACE DURING CONSTRUCTION PERIOD AS DIRECTED BY ENGINEER.
 2. CLOSED RUNWAY MARKER MAY BE EITHER SNOW FENCE OR POWDER PAINTER YELLOW AND SECURELY FASTENED IN PLACE.
 3. COST OF PLACING AND MAINTAINING THE CLOSED RUNWAY MARKER IS CONSIDERED NECESSARY AND INCIDENTAL TO CONSTRUCTION AND IS NOT A SEPARATE PAY ITEM.
 4. CLOSED RUNWAY MARKER TO BE PLACED OVER NUMERALS OR IN R/W OVERRUN AREA JUST OFF THRESHOLD.



REV.	DATE	DESCRIPTION	FILE NO.

Job No. 720000718.01

EDWARD F. KNAPP STATE AIRPORT
BERLIN, VERMONT

TAXIWAY TO FUEL APRON
GENERAL PROJECT LAYOUT

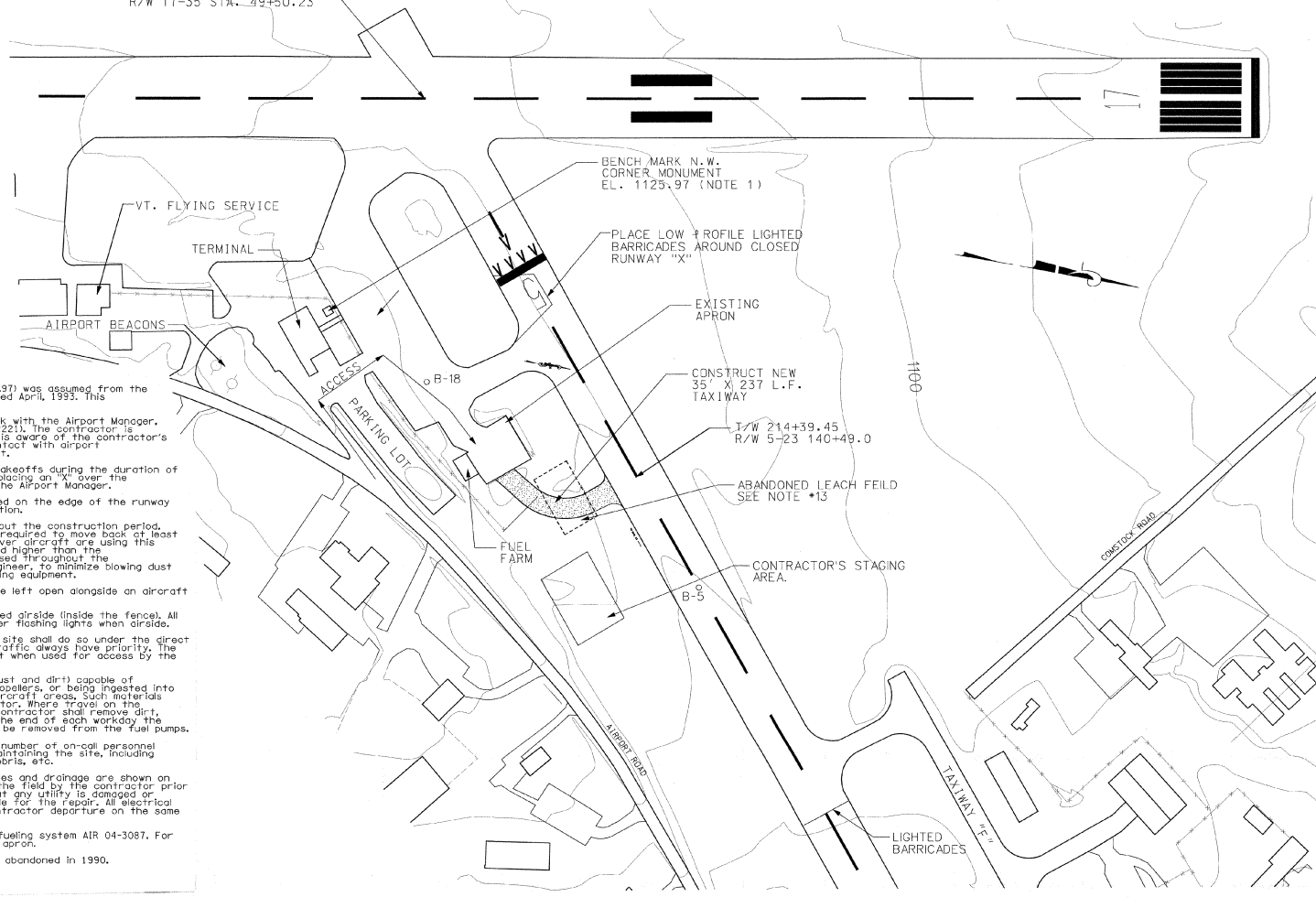
URS Greiner
1 NORTHWAY LN.
LATHAM, NEW YORK

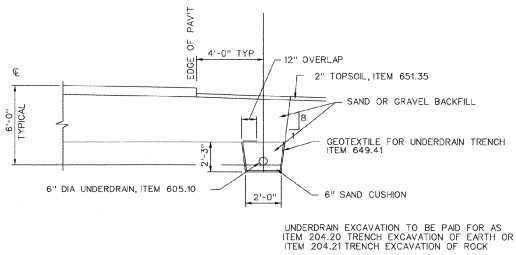
Designed by: C.W.D.	Checked by: C.W.D.
Drawn by: AL BEC	Checked by: B.W.C.
	Approved by: C.W.D.

Scale: 1"=100'
Date: 1/17/00
Sheet 20f 8
Sheet No. 2

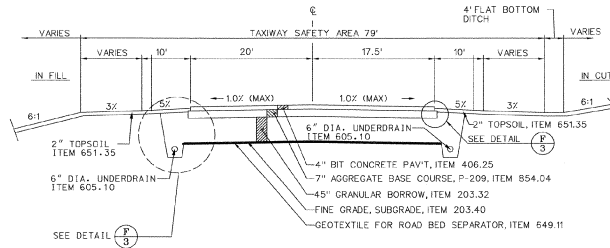
NOTES

1. Bench mark elevation on granite slab (1125.97) was assumed from the fueling apron system plans, AIR 04-3087, dated April, 1952. This elevation is not referenced to MSL.
2. The resident engineer will coordinate all work with the Airport Manager, John Roberts, @ VT. Flying Service (802-225-2221). The contractor is responsible for ensuring that the resident is aware of the contractor's work schedule. Except in emergencies all contact with airport personnel shall be made through the resident.
3. The runway will be closed for landings and takeoffs during the duration of the work. Runway closures are denoted by placing an "X" over the numerals 5 & 23 a NOTAM will be issued by the Airport Manager.
4. Lighted construction barricades will be placed on the edge of the runway and apron to mark the edge of the excavation.
5. The fueling apron will remain active throughout the construction period. The contractor's men and equipment will be required to move back at least 50 feet from the edge of the apron whenever aircraft are using this apron. No mounds of materials shall be placed higher than the apron elevation. Dust control shall be used throughout the construction period, as directed by the engineer, to minimize blowing dust and dirt onto the fuel apron and fuel pumping equipment.
6. No excavation greater than 3 inches shall be left open alongside an aircraft movement area.
7. No contractor employee vehicles will be allowed inside the fence. All contractor vehicles must have and use amber flashing lights when inside.
8. All contractor vehicles entering/exiting the site shall do so under the direct control of a competent flagger. Aircraft traffic always have priority. The Gate shall be kept closed at all times except when used for access by the contractor's vehicles.
9. Debris, waste and loose material (including dust and dirt) capable of causing damage to aircraft landing gear, propellers, or being ingested into jet engines shall not be allowed on active aircraft areas. Such materials shall be removed immediately by the contractor. Where travel on the apron, taxiway or runway is required, the contractor shall remove dirt, mud, etc. immediately. At a minimum and at the end of each workday the apron shall be swept and dust build up shall be removed from the fuel pumps.
10. The contractor shall provide the telephone number of on-call personnel who can be reached 24 hours a day, for maintaining the site, including moving, replacing barricades, X's, clearing debris, etc.
11. The location of all known underground utilities and drainage are shown on the plans. All locations must be verified in the field by the contractor prior to beginning construction. In the event that any utility is damaged or destroyed, the contractor will be responsible for the repair. All electrical repairs must be completed prior to the contractor departure on the same day.
12. Refer to as-built plans for Jet A & AVGAS fueling system AIR 04-3087. For additional information regarding the fueling apron.
13. Existing leachfield approximate location, was abandoned in 1990.

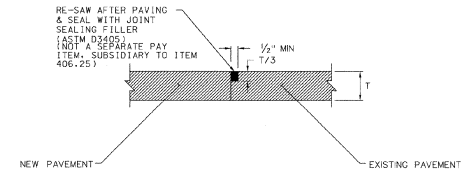




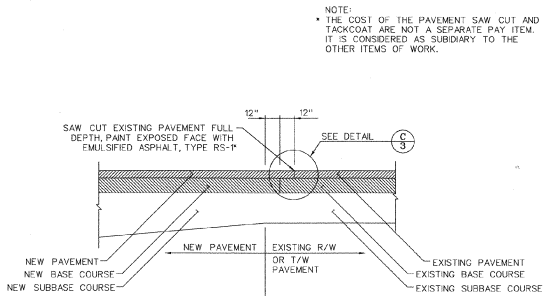
A
3
6\"/>



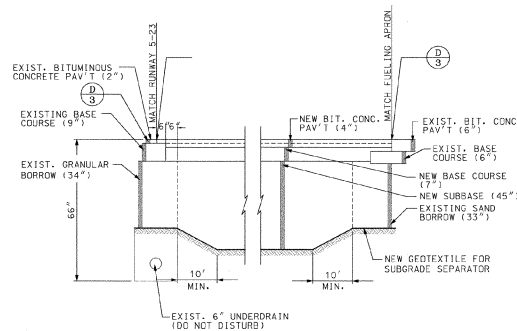
B
3
PROPOSED TAXIWAY TYPICAL SECTION
SCALE - NONE



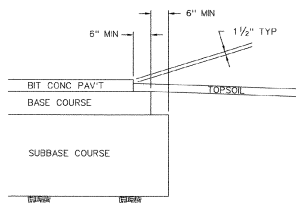
C
3
SAWCUT DETAIL
SCALE - NONE



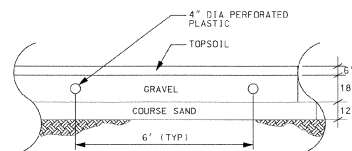
D
3
BUTT JOINT DETAIL
SCALE - NONE



E
3
TAXIWAY SUBGRADE TRANSITION AND BUTT JOINT DETAIL
SCALE - NTS



F
3
PAVEMENT SECTION EDGE (TYP)
SCALE - NONE



G
3
ABANDONED LEACHFIELD
SCALE - NTS

- SUBGRADE UNDER AREAS TO BE PAVED TO BE COMPACTED TO 100% DENSITY AS PER AASHTO T-180.
- BITUMINOUS TACK COAT (EMULSIFIED ASPHALT, RS-1) TO BE APPLIED BETWEEN LIFTS OF BITUMINOUS CONCRETE PAVEMENT AT A RATE OF 0.01 TO 0.03 GAL / SY WHEN DIRECTED BY THE ENGINEER. (NOT A SEPARATE PAY ITEM.)
- SEED, ITEM 651.15 TO BE APPLIED AS DIRECTED BY

NAME
CROWN VETCH
CREEPING RED FESCUE
TIMOTHY
PERU RYE GRASS
(VAR. PENNINE)
ALFALFA (VAR. SARANAC)
BIRDSFOOT TREFLOL
(VAR. EMPRE)
HIGHLAND BENT GRASS

THE SEED MIXTURE SHALL NOT HAVE A WEED CONTENT EXCEEDING 0.40% BY WEIGHT AND SHALL BE FREE OF ALL NOXIOUS WEED SEED.
FERTILIZER, ITEM 651.18, FORMULA 10-20-10 TO BE USED WITH SEED, ITEM 651.15, A

AGRICULTURAL LIMESTONE, ITEM 651.20, TO BE APPLIED AT RATE OF 2 TONS / ACRE OR AS DIRECTED BY ENGINEER.
HAY MULCH, ITEM 651.25, TO BE PLACED ON EARTH SLOPES AT THE RATE OF 2 TONS / ACRE.

TOPSOIL, ITEM 651.35, TO BE USED WITH SEED, ITEM 651.15, AS DIRECTED BY THE ENGINEER.

ALLOWABLE THICKNESS TOLERANCES:
SUBGRADE ± 1"
PAVEMENT ± 1/2"
CONTROLLED MATERIAL ± 1/2"
BASE COURSE ± 1/2"



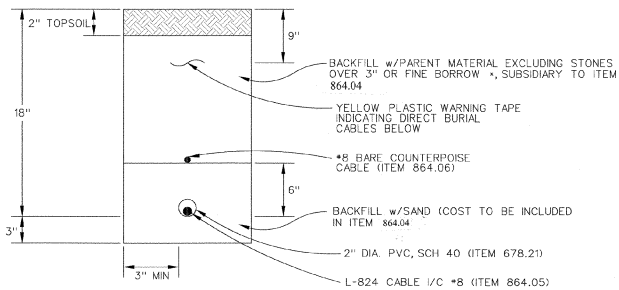
DESIGNED BY	DATE	DESCRIPTION	REV.
EDWARD F. KNAPP		TYPICAL SECTIONS & DETAILS	
CHECKED BY	DATE	DESCRIPTION	REV.
AL BEC			
APPROVED BY	DATE	DESCRIPTION	REV.
EDWARD F. KNAPP			

EDWARD F. KNAPP STATE AIRPORT
BERLIN, VERMONT
TYPICAL SECTIONS & DETAILS

URS Greiner
1 NORTHWAY LN.
LATHAM, NEW YORK

DESIGNED BY	DATE
EDWARD F. KNAPP	
CHECKED BY	DATE
AL BEC	
APPROVED BY	DATE
EDWARD F. KNAPP	

Scale: AS NOTED
Date: 1/17/00
Sheet of 8
Sheet No. 3

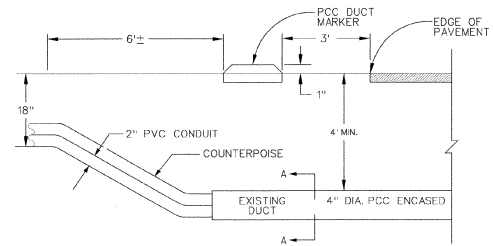


- NOTE:
- ADDITIONAL CONDUITS MAY BE PLACED IN SAME TRENCH @ 3" SPACING, MAX NUMBER OF CABLES / CONDUIT PER N.E.C.
 - CABLE TRENCH TO BE PAID FOR UNDER ITEM 864.04

CONDUIT & TRENCH DETAIL (TYP)

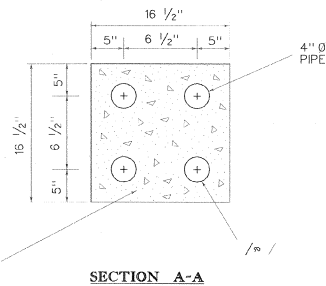
NOT TO SCALE

*FINE BORROW MATERIAL REASONABLY FREE FROM LOAM, CLAY OR ORGANIC MATERIAL, MAXIMUM SIZE = 1/2" (AS DETERMINED BY THE RESIDENT ENGINEER.)



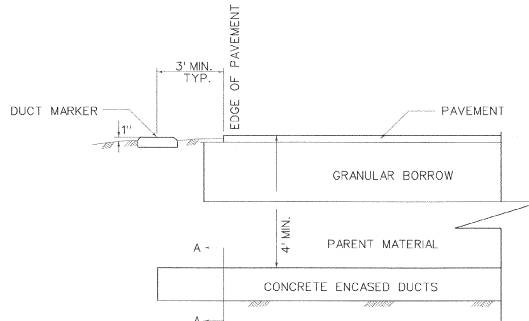
CONDUIT & DUCT DETAIL (TYP)

NOT TO SCALE

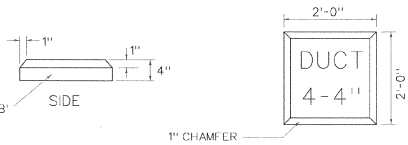


SECTION A-A

ALL DUCTS, EXCEPT STEEL CONDUIT, INSTALLED UNDER RUNWAYS, TAXIWAYS, APRONS, AND OTHER PAVED AREAS SHALL BE ENCASED IN A CONCRETE ENVELOPE



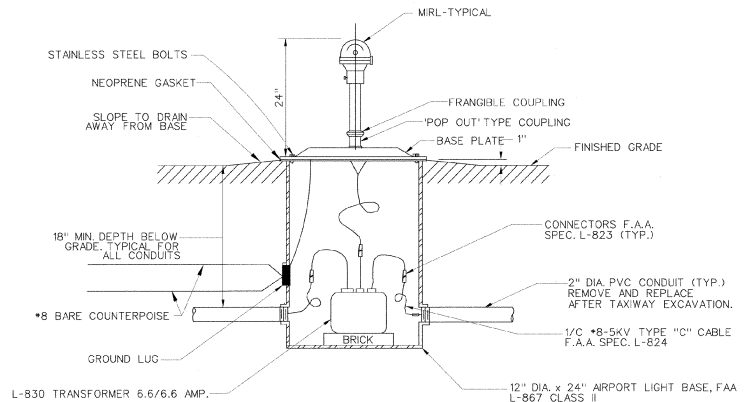
AIRPORT UNDERGROUND ELECTRICAL DUCT



DUCT MARKERS

NOT TO SCALE

- NOTES
- LETTERING ON DUCT MARKERS TO BE EMBOSSED, 1/2" CUT, 1/2" DEEP.
 - HAND LETTERING NOT ALLOWED



TYPICAL ELEVATED EDGE LIGHT

NOT TO SCALE

NOTE:

- PLACE 2" PVC CONDUIT & COUNTERPOISE IN 4" PCC ENCASED DUCT, FULL LENGTH.
- HAND EXCAVATE AROUND EXISTING CABLES. MAY BE DIRECT BURIAL.
- PLACE PCC DUCT MARKERS, AS SHOWN.



REV.	DATE	DESCRIPTION	FILE NO.

EDWARD F. KNAPP STATE AIRPORT
BERLIN, VERMONT

URS Greiner
1 NORTHWAY LN.
LATHAM, NEW YORK

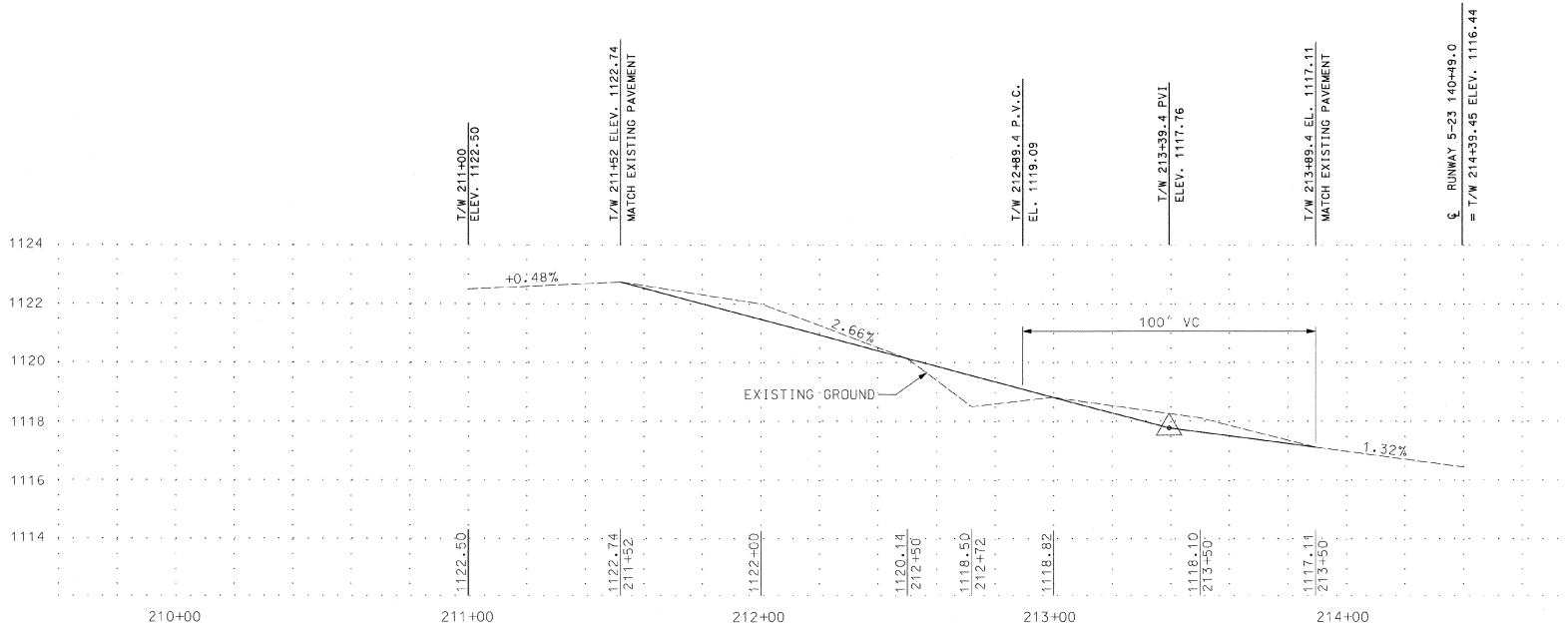
Designed by: G.M.B.
Drawn by: A. BEY
Checked by:
Approved by:

Scale: AS NOTED

Date: 1/17/00

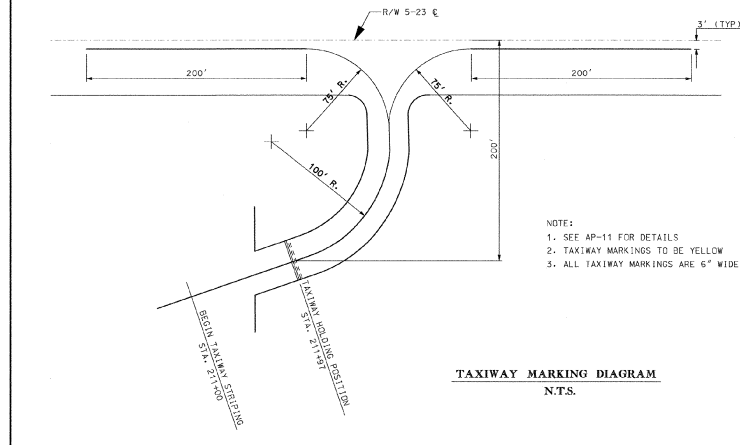
Sheet 4 of 8

Sheet No
4



TAXIWAY PROFILE

SCALE: 1" = 2' VERT.
1" = 20' HORIZ.



REV.	DATE	DESCRIPTION	FILE NO.

Job No. 17200071801

EDWARD F. KNAPP STATE AIRPORT
BURLING, VERMONT
TAXIWAY TO FUELING APRON
PROFILE AND MARKING DIAGRAM

URS Greiner
1 NORTHWAY LN.
LATHAM, NEW YORK

Designed by: C.W.D.
Drawn by: A.L.B.
Checked by: B.W.C.
Approved by: C.M.B.

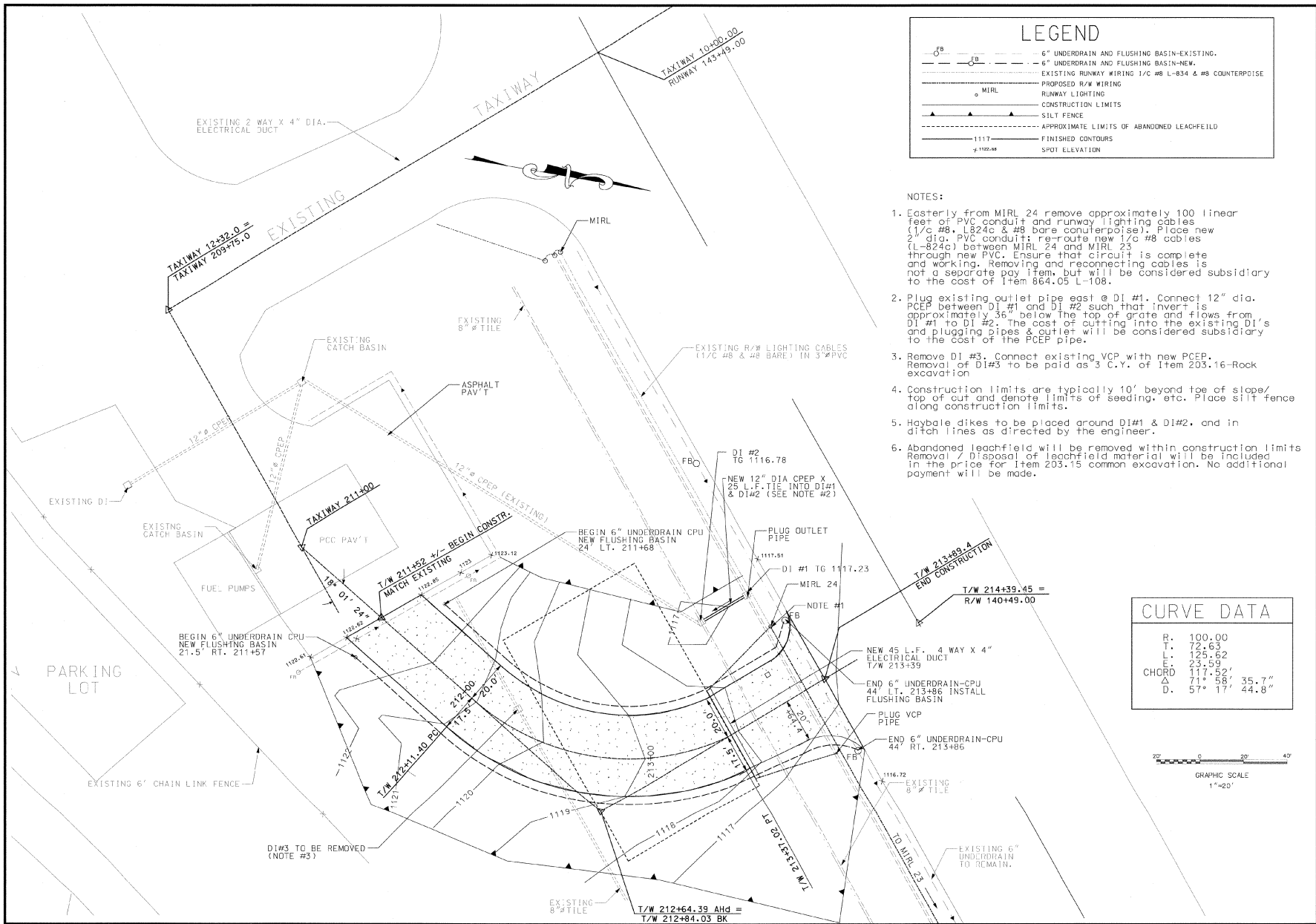
Scale: AS NOTED

Date: 1/17/00

Sheet 5 of 8

Sheet No.

5

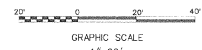


LEGEND

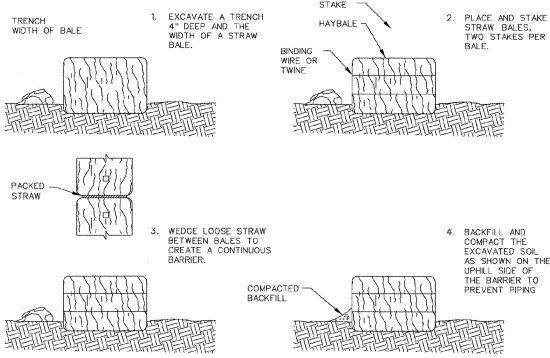
	6" UNDERDRAIN AND FLUSHING BASIN-EXISTING.
	6" UNDERDRAIN AND FLUSHING BASIN-NEW.
	EXISTING RUNWAY WIRING 1/C #8 L-834 & #8 COUNTERPOISE
	PROPOSED R/W WIRING
	RUNWAY LIGHTING
	CONSTRUCTION LIMITS
	SILT FENCE
	APPROXIMATE LIMITS OF ABANDONED LEACHFIELD
	FINISHED CONTOURS
	SPOT ELEVATION

- NOTES:**
- Easterly from MIRL 24 remove approximately 100 linear feet of PVC conduit and runway lighting cables (1/c #8, L824c & #8 bare counterpoise). Place new 2" dia. PVC conduit; re-route new 1/c #8 cables (L-824c) between MIRL 24 and MIRL 23 through new PVC. Ensure that circuit is complete and working. Removing and reconnecting cables is not a separate pay item, but will be considered subsidiary to the cost of Item 864.05 L-108.
 - Plug existing outlet pipe east @ DI #1. Connect 12" dia. PCEP between DI #1 and DI #2 such that invert is approximately 36" below the top of grate and flows from DI #1 to DI #2. The cost of cutting into the existing DI's and plugging pipes & quiet will be considered subsidiary to the cost of the PCEP pipe.
 - Remove DI #3. Connect existing VCP with new PCEP. Removal of DI#3 to be paid as 3 C.Y. of Item 203.16-Rock excavation.
 - Construction limits are typically 10' beyond toe of slope/ top of cut and denote limits of seeding, etc. Place silt fence along construction limits.
 - Haybale dikes to be placed around DI#1 & DI#2, and in ditch lines as directed by the engineer.
 - Abandoned leachfield will be removed within construction limits. Removal / Disposal of leachfield material will be included in the price for Item 203.15 common excavation. No additional payment will be made.

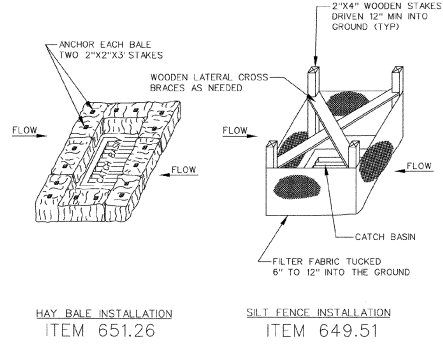
CURVE DATA	
R.	100.00
T.	72.63
L.	125.62
	23.59
CHORD	117.52'
	71' 5.8"
	35.7"
D.	57' 17" 44.8"



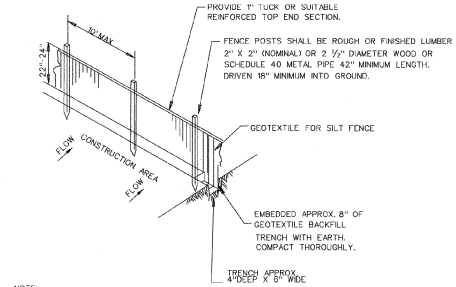
DESIGNED BY: C.M.D.	DRAWN BY: AL BEY	CHECKED BY: B.M.C.	APPROVED BY: C.M.D.
URS Greiner 1 NORTHWAY LN. LATHAM, NEW YORK			
EDWARD F. KNAPP STATE AIRPORT BERLIN, VERMONT TAXIWAY AND FEELING APRON GEOMETRIC DRAINAGE PLAN			
Scale: 1" = 20'		Date: 1/17/00	
Sheet 6 of 8		Sheet No. 6	



SEDIMENTATION BARRIER - HAYBALE
ITEM 651.26



SEDIMENTATION CONTROL
INLET PROTECTION

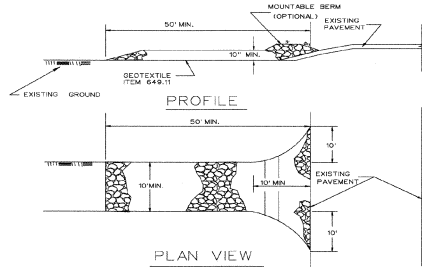


NOTE:

1. GEOTEXTILE FABRIC TO BE FASTENED SECURELY TO FENCE POST BY USE OF WIRE TIES, 3 FASTENERS PER POST.
2. ENDS OF INDIVIDUAL ROLLS OF GEOTEXTILE SHALL BE SECURELY FASTENED TO A COMMON POST OR OVERLAPPED 2' MIN.
3. TO BE PLACED AT LOCATIONS SHOWN ON PLANS OR AS ORDERED BY THE ENGINEER.

PLAN VIEW SYMBOL

SLOPE SILT FENCE (S.S.F.)
NOT TO SCALE



CONSTRUCTION SPECIFICATIONS

1. STONE - SUBBASE OF CRUSHED AGGREGATE, ITEM 854.04
2. LENGTH - AS REQUIRED, BUT NOT LESS THAN 50 FEET.
3. THICKNESS - NOT LESS THAN TEN (10) INCHES.
4. WIDTH - TEN (10) FOOT MINIMUM, BUT NOT LESS THAN THE FULL WIDTH AT POINTS WHERE INGRESS OR EGRESS OCCURS.
5. GEOTEXTILE - WILL BE PLACED OVER THE ENTIRE AREA PRIOR TO PLACING OF STONE.
6. SURFACE WATER - ALL SURFACE WATER FLOWING OR DIVERTED TOWARD CONSTRUCTION ENTRANCES SHALL BE PIPED UNDER THE ENTRANCE. IF PIPING IS IMPRACTICAL, A MOUNTABLE BERM WITH 5:1 SLOPES WILL BE PERMITTED.
7. MAINTENANCE - THE ENTRANCE SHALL BE MAINTAINED IN A CONDITION WHICH WILL PREVENT TRACKING OR FLOWING OF SEDIMENT ONTO PUBLIC RIGHTS-OF-WAY. THIS MAY REQUIRE PERIODIC TOP DRESSING WITH ADDITIONAL STONE AS CONDITIONS DEMAND AND REPAIR AND/OR CLEANOUT OF ANY MEASURES USED TO TRAP SEDIMENT. ALL SEDIMENT SPILLED, DROPPED, WASHED OR TRACKED ONTO PUBLIC RIGHTS-OF-WAY MUST BE REMOVED IMMEDIATELY.
8. PERIODIC INSPECTION AND MAINTENANCE SHALL BE PROVIDED AFTER HEAVY USE AND/OR RAIN.
9. THIS ENTRANCE WILL BE CONSTRUCTED AT LOCATIONS SHOWN ON THE PLANS AND/OR WHERE ORDERED BY THE ENGINEER.
10. THE LOCATION AND NUMBER OF STABILIZED CONSTRUCTION ENTRANCES WILL BE APPROVED BY THE ENGINEER.

STABILIZED CONSTRUCTION ENTRANCE
NOT TO SCALE

EROSION AND SEDIMENT CONTROL NOTES

1. THE CONTRACTOR SHALL CONSTRUCT ALL EROSION AND SEDIMENT CONTROL MEASURES PER THE APPROVED PLAN AND CONSTRUCTION SEQUENCE AND SHALL HAVE THEM INSPECTED BY THE ENGINEER PRIOR TO BEGINNING ANY OTHER LAND DISTURBANCES. MINOR SEDIMENT CONTROL DEVICE LOCATION ADJUSTMENTS MAY BE MADE IN THE FIELD WITH THE APPROVAL OF THE ENGINEER. THE CONTRACTOR SHALL ENSURE THAT ALL RUNOFF FROM DISTURBED AREAS IS DIRECTED TO THE SEDIMENT CONTROL DEVICES, AND SHALL NOT REMOVE ANY EROSION OR SEDIMENT CONTROL MEASURE WITHOUT PRIOR PERMISSION FROM THE ENGINEER. THE CONTRACTOR MUST OBTAIN PRIOR APPROVAL FOR CHANGES TO THE SEDIMENT CONTROL PLAN AND/OR SEQUENCE OF CONSTRUCTION.
2. THE CONTRACTOR SHALL MAINTAIN ALL EROSION AND SEDIMENT CONTROL MEASURES UNTIL THEY ARE REMOVED.
3. THE CONTRACTOR SHALL APPLY SEED AND MULCH OR OTHER APPROVED STABILIZATION MEASURES TO ALL DISTURBED AREAS AND STOCKPILES WITHIN FOURTEEN (14) CALENDAR DAYS AFTER STRIPPING AND GRADING ACTIVITIES HAVE CEASED IN THE AREA. MAINTENANCE SHALL BE PERFORMED AS NECESSARY TO ENSURE CONTINUED STABILIZATION. PERMANENT SOIL STABILIZATION SHALL BE PROVIDED WITHIN SEVEN (7) DAYS OF ESTABLISHMENT OF FINAL GRADE.
4. THIS EROSION CONTROL PLAN SHALL BE IMPLEMENTED ON ALL DISTURBED AREAS WITHIN THE CONSTRUCTION SITE. ALL MEASURES INVOLVING EROSION CONTROL PRACTICES SHALL BE INSTALLED IN CONFORMANCE WITH "THE VERMONT HANDBOOK FOR SOIL EROSION AND SEDIMENT CONTROL ON CONSTRUCTION SITES" AS PUBLISHED BY THE VT. GEOLOGICAL SURVEY.
5. DURING THE PERIOD OF CONSTRUCTION ACTIVITY, ALL EROSION CONTROL MEASURES SHALL BE MAINTAINED BY THE CONTRACTOR. AT THE COMPLETION OF CONSTRUCTION, THE CONTRACTOR SHALL COORDINATE THE TRANSFER OF MAINTENANCE RESPONSIBILITIES, IF REQUIRED, TO THE VT AGENCY OF TRANSPORTATION.
6. ALL TEMPORARY EROSION AND SEDIMENT CONTROL PRACTICES SHALL BE REMOVED AND DISPOSED OF WITHIN THIRTY (30) DAYS AFTER FINAL SITE STABILIZATION IS ACHIEVED OR AFTER THE TEMPORARY PRACTICES ARE NO LONGER NEEDED. TRAPPED SEDIMENT SHALL BE STABILIZED OR REMOVED TO PREVENT FURTHER EROSION.
7. EROSION CONTROL DEVICES REMOVED DURING GRADING OPERATIONS SHALL BE PUT BACK IN PLACE AT THE END OF THE DAY OR DURING INCLEMENT WEATHER AS DIRECTED BY THE ENGINEER.
8. STREAMS INCLUDING BED AND BANKS SHALL BE RESTABILIZED IMMEDIATELY AFTER CHANNEL WORK IS COMPLETED, INTERRUPTED, OR STOPPED.
9. NO SOIL, ROCK, DEBRIS, OR ANY OTHER MATERIAL SHALL BE DUMPED OR PLACED INTO A WATER COURSE OR INTO SUCH PROXIMITY THAT IT MAY READILY SLOUGH, SLIP, OR ERODE INTO A WATER COURSE UNLESS SUCH DUMPING OR PLACING IS AUTHORIZED BY THE ENGINEER AND WHEN APPLICABLE, THE U.S. ARMY CORPS OF ENGINEERS, FOR SUCH PURPOSES AS, BUT NOT LIMITED TO, CONSTRUCTION OF BRIDGES, CULVERTS, AND EROSION CONTROL STRUCTURES.
10. PERMANENT SEEDING SHALL BE DONE BETWEEN APRIL 30 AND SEPTEMBER 15. IF SEEDING IS DONE AT OTHER TIMES, IT SHALL BE CLASSIFIED AS "TEMPORARY SEEDING." PERMANENT SEED SHALL CONFORM TO THE SEEDING MIXTURE STATED ON SHEET 7. TEMPORARY AND PERMANENT SEEDING SHALL CONSIST OF FERTILIZING, WATERING AND SEEDING PLACED AT RATES IN ACCORDANCE WITH THE SPECIFICATIONS. PERMANENT SEEDING AND MULCHING SHALL BE PAID FOR UNDER 651.5 AND 651.25, RESPECTIVELY. TEMPORARY SEED, MULCH, AND FERTILIZER FOR EROSION AND SEDIMENT CONTROL SHALL BE PLACED IN ACCORDANCE WITH THE SPECIFICATIONS. NO PAYMENT WILL BE MADE FOR TEMPORARY SEEDING OR MULCHING.
11. SURFACE DRAINAGE FLOWS OVER UNSTABILIZED CUT AND FILL SLOPES SHALL BE CONTROLLED BY EITHER PREVENTING DRAINAGE FLOWS TRAVERSING THE SLOPES OR BY INSTALLING PROTECTIVE DEVICES TO LOWER THE WATER DOWNSLOPE WITHOUT CAUSING EROSION. DIKES SHALL BE INSTALLED AND MAINTAINED AT THE TOP OF CUT OR FILL SLOPES UNTIL THE SLOPE AND DRAINAGE AREA TO IT ARE FULLY STABILIZED. AT WHICH TIME THEY MUST BE REMOVED AND FINAL GRADING DONE TO PROMOTE SHEET FLOW DRAINAGE. PROTECTIVE METHODS MUST BE PROVIDED AT POINTS OF CONCENTRATED FLOW WHERE EROSION IS LIKELY TO OCCUR.
12. ALL POINTS OF CONSTRUCTION INGRESS AND EGRESS IN UNPAVED AREAS SHALL BE STABILIZED AND PROTECTED TO PREVENT TRACKING OF MUD ONTO PUBLIC OR PRIVATE ROADWAYS. (SUBSIDIARY TO ITEM 203.15)
13. IF ROADWAYS ACCUMULATE DEBRIS, THE CONTRACTOR SHALL USE A POWER BROOM TO REMOVE THE SEDIMENT TO THE SATISFACTION OF THE ENGINEER. (SUBSIDIARY TO ITEM 203.15)
14. TOPSOIL (TO BE STOCKPILED ON SITE) WILL BE PLACED ON WELL DRAINED LAND AWAY FROM STREAMS IN ACCORDANCE WITH APPROVED EROSION AND SEDIMENT CONTROL MEASURES. IT SHALL BE PLACED IN NEAT PILES. THE CONTRACTOR WILL PROVIDE AN ADEQUATE QUANTITY OF SILT FENCE TO CONTROL THE PERIMETER OF THE STOCKPILE. THE CONTRACTOR, WITH THE APPROVAL OF THE ENGINEER, MAY CONSTRUCT AN EARTH DIKE IN LIEU OF SILT FENCE.

SITE DATA

PROJECT DESCRIPTION:
AIRPORT DEVELOPMENT TO INCLUDE PAVING, CLEARING AND GRUBBING, EARTHWORK, STORM DRAINAGE, AND UTILITIES.

TOTAL SITE AREA:
AREA WITHIN LIMITS OF WORK APPROX. 1/2 ACRES.

EXISTING SOIL TYPES:
BROWN SILTY LOAM
-APPROXIMATELY 3" OF TOPSOIL
-INFORMATION OBTAINED FROM BORINGS DATED MAY, 1974



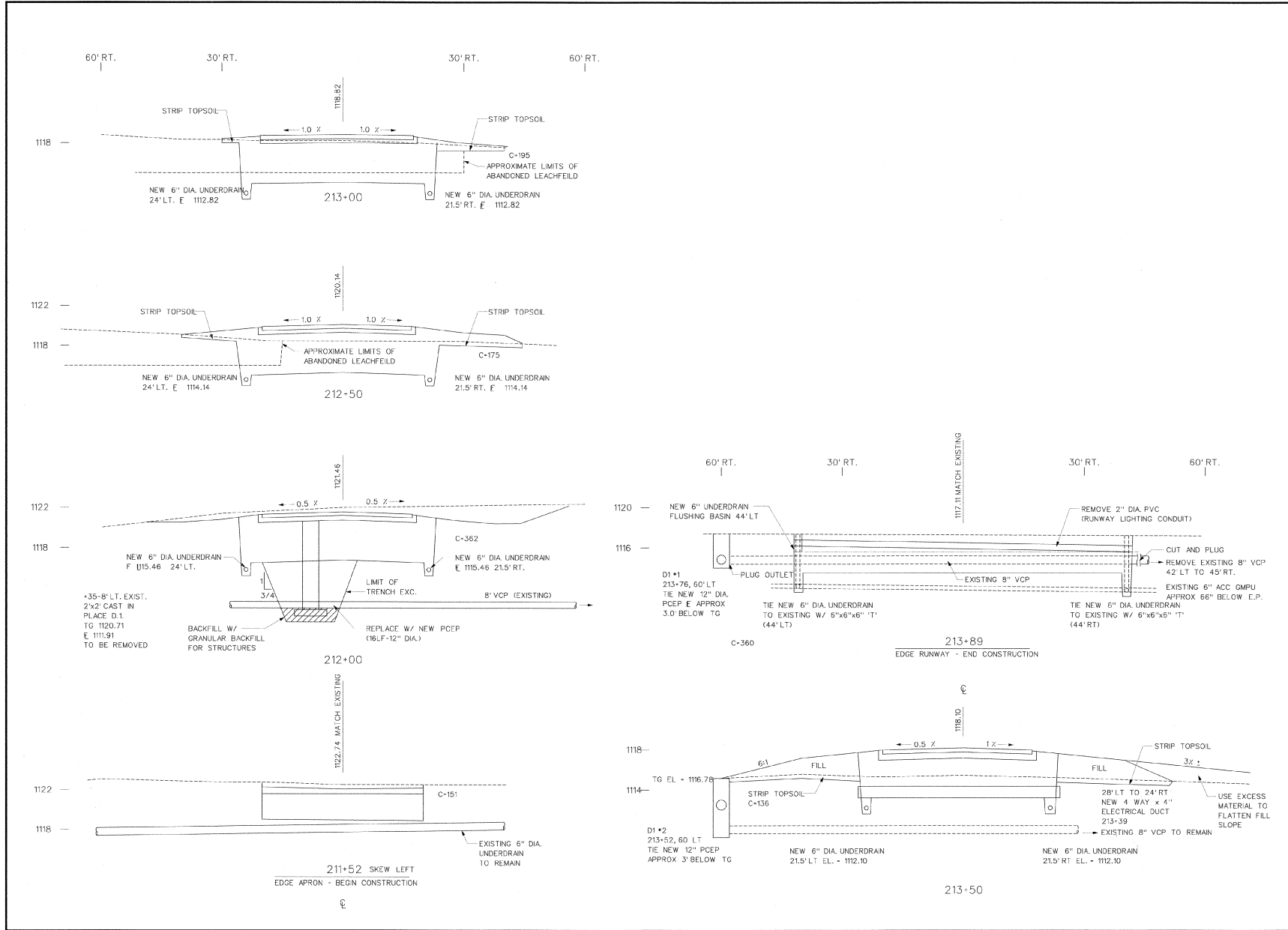
REV. DATE	DESCRIPTION	FILE NO. SECT. DON

EDWARD F. KNAPP STATE AIRPORT
BERLIN, VERMONT
SEDIMENTATION / EROSION
CONTROL DETAILS

URS Greiner
1 NORTHWAY LN.
LATHAM, NEW YORK

Checked by: G.W.D.
Drawn by: N. SEY
Checked by: B.W.C.
Approved by: G.W.D.

Scale: NTS
Date: 1/11/00
Sheet 7 of 8
Sheet No. 7



EDWARD F. KNAPP STATE AIRPORT BERLIN, VERMONT		REV.	DATE	DESCRIPTION	FILE NO.
TAXIWAY CROSS SECTIONS STATION 211+52 TO 213+89		JOB NO. 12000071801			
URS Greiner 1 NORTHWAY LN. LATHAM, NEW YORK					
Designed by:	GRID	Drawn by:	MMI	Checked by:	BLC
Scale:	1" = 10'	Approved by:	GRID	Date:	3/14/00
Sheet:	101	Sheet No:	8		