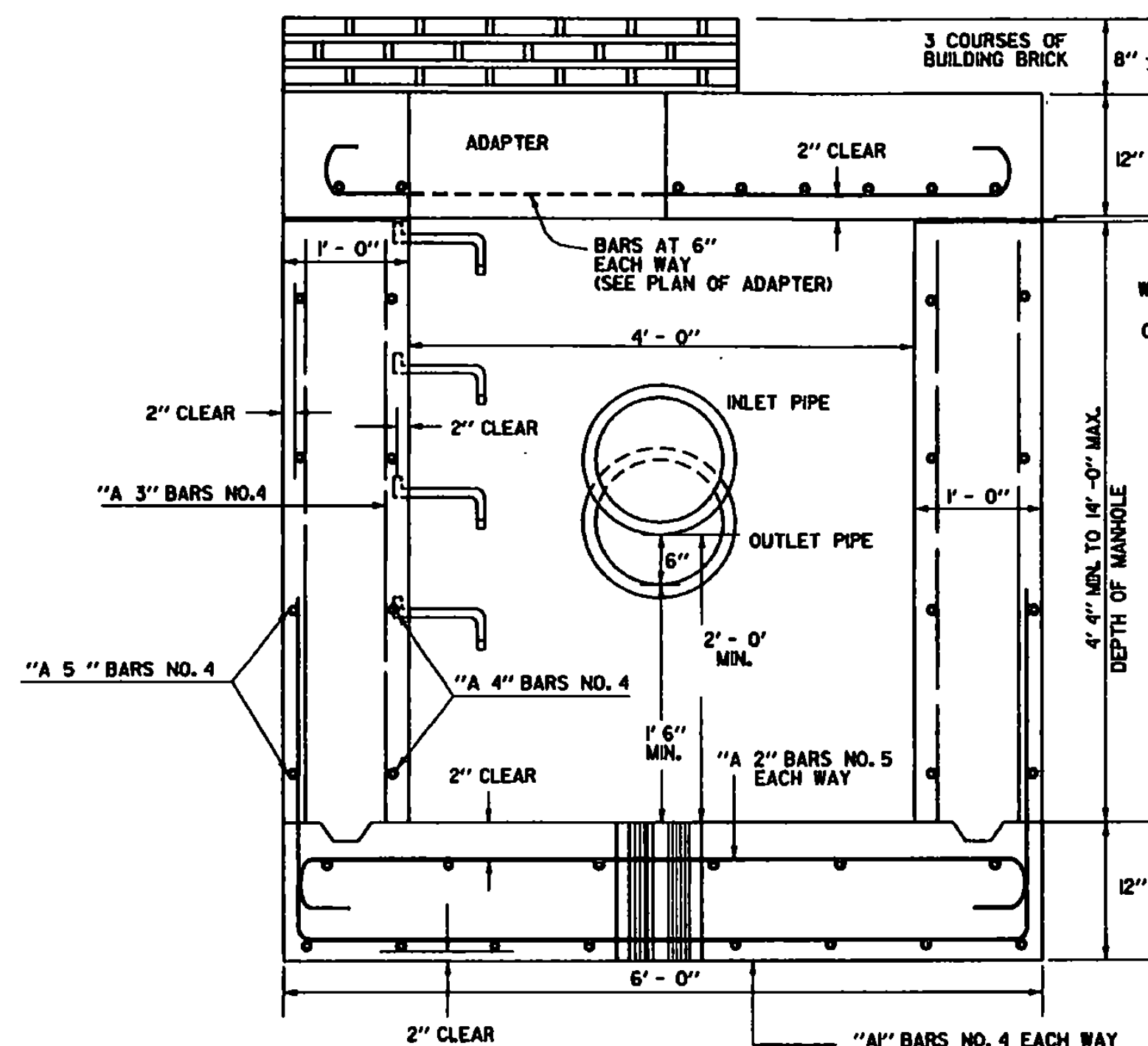
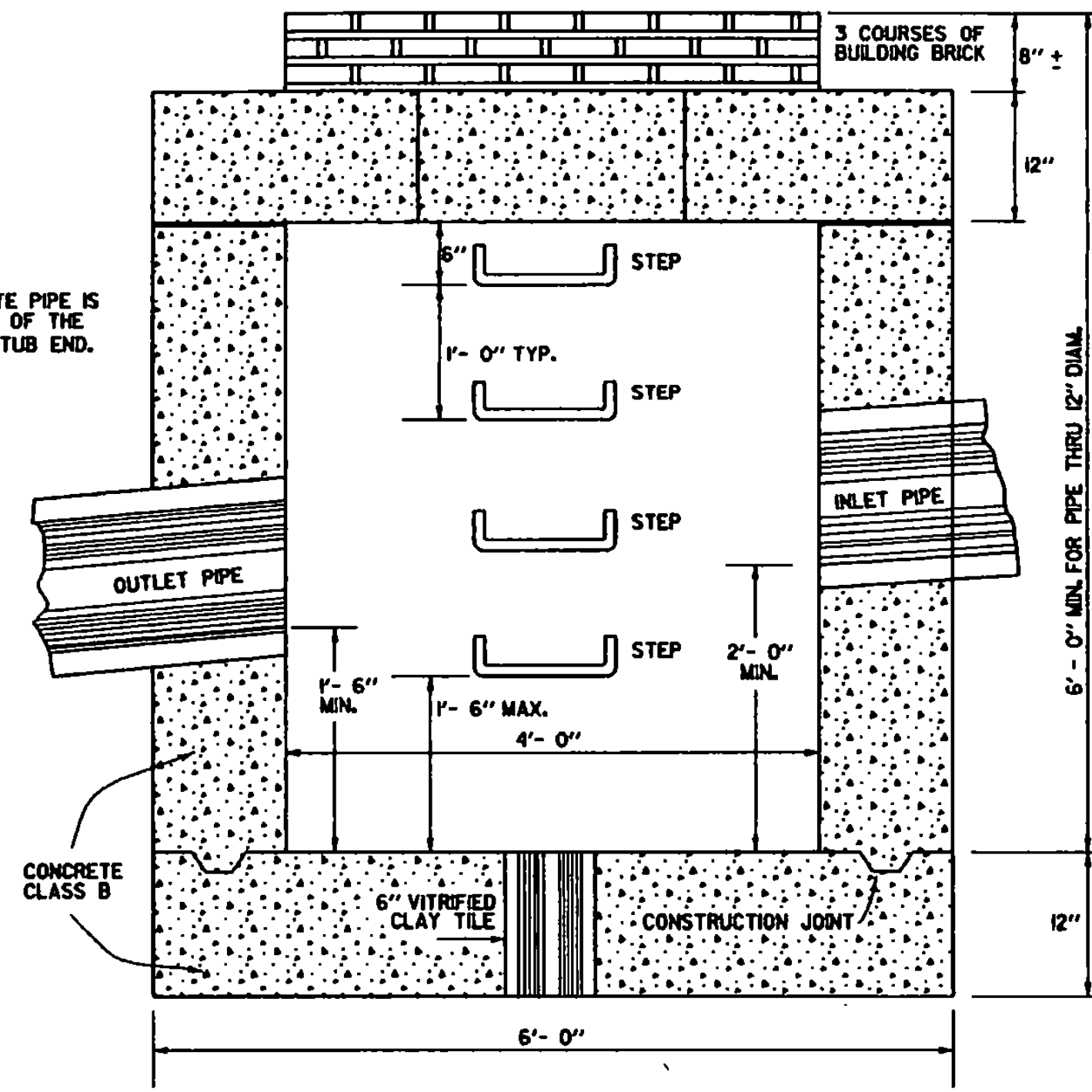


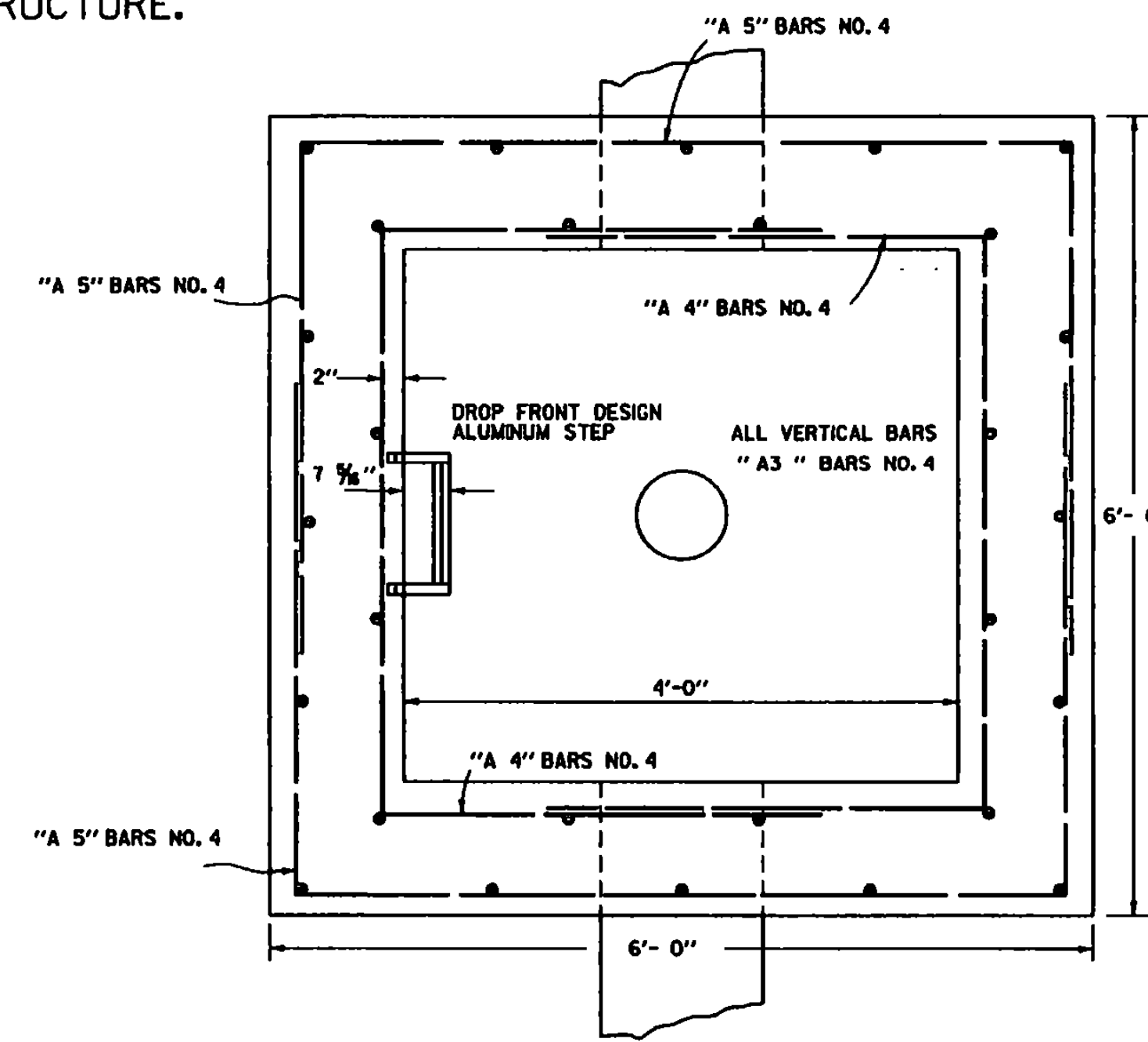
ANY OF THE COMBINATIONS OF TOPS, CURBS AND GRATES FOUND ON SHEETS D-6, D-9, D-10, D-11, D-15, AND D-16 CAN BE ADAPTED FOR USE WITH THIS STRUCTURE.



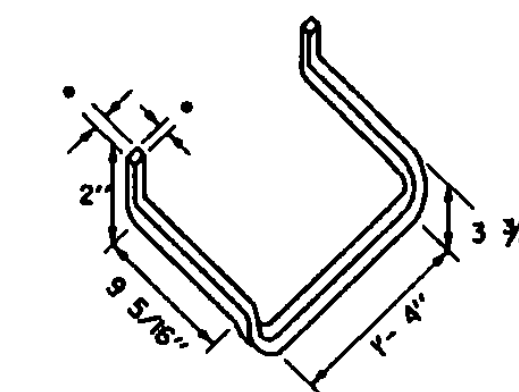
FRONT ELEVATION



SIDE ELEVATION

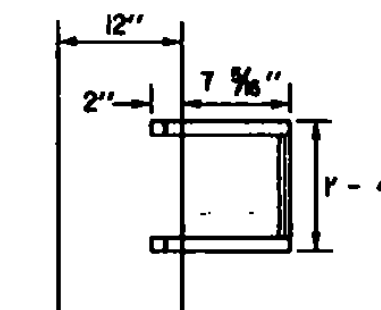


PLAN VIEW



ALUMINUM STEP (DROP FRONT)

INDIVIDUAL METAL RINGS SHALL HAVE A MINIMUM DIMENSION OF 1" AND SHALL BE PAINTED OR OTHERWISE TREATED TO RESIST CORROSION AND RUSTING.

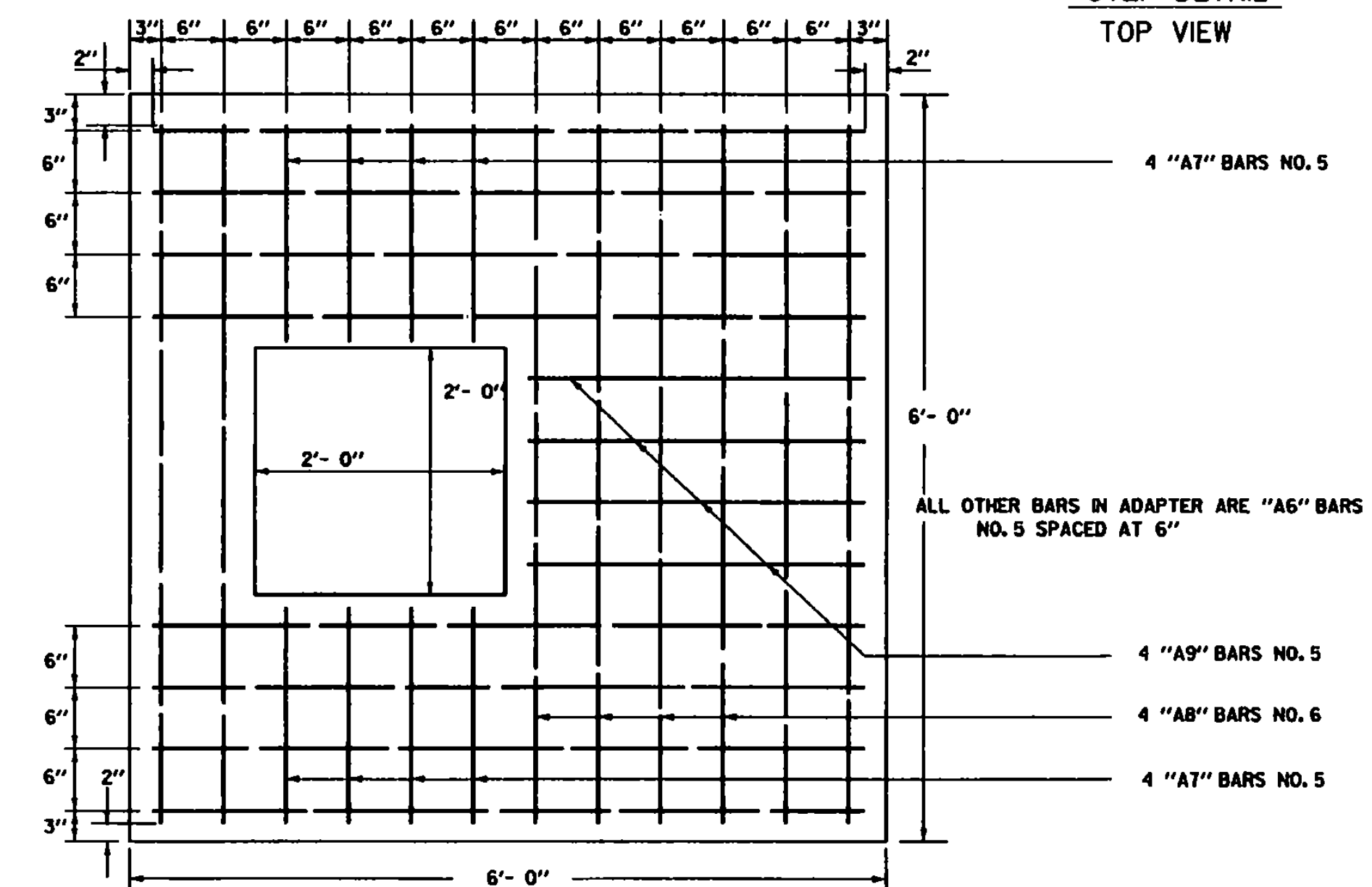


STEP DETAIL TOP VIEW

BAR	REINFORCING STEEL SCHEDULE FOR CATCH BASIN						
	HEIGHT	4'-0" MIN.	6'-0"	8'-0"	10'-0"	12'-0"	14'-0"
A 1	16 BARS NO. 4 AT 9"	16	16	16	16	16	16
A 2	12 BARS NO. 5 AT 15"	14	14	16	18	18	18
A 3	28 BARS NO. 4 AT 18"	28	28	28	28	28	28
A 4	8 BARS NO. 4 AT 15"	10	14	18	20	24	24
A 5	8 BARS NO. 4 AT 15"	10	14	18	20	24	24
A 6	12 BARS NO. 5 AT 6"	12	12	12	12	12	12
A 7	8 BARS NO. 5 AT 6"	8	8	8	8	8	8
A 8	4 BARS NO. 6 AT 6"	4	4	4	4	4	4
A 9	4 BARS NO. 5 AT 6"	4	4	4	4	4	4
TOTAL WEIGHT(LBS)	576	654	756	873	954	1060	

- MORTAR TYPE II TO BE USED FOR JOINT FILLER AND LAYING OF BRICK.
- THREE COURSES OF BUILDING BRICK TO BE PLACED ON TOP OF CONCRETE ADAPTER PRIOR TO PLACING CONCRETE SEAT TO FACILITATE CHANGING ELEVATION OF CATCH BASIN OR MANHOLE
- ALL REINFORCING BARS SPACED AS SHOWN OR NOTED, FOR SIZE AND LENGTH, SEE SCHEDULE. ALL REINFORCING STEEL TO BE ROUND DEFORMED BARS.
- THE ADAPTER SHALL BE PLACED ON THE CATCH BASIN SO AS TO PROVIDE DIRECT ACCESS TO STEPS.
- A7 AND A9 BARS MAY BE CUT FROM A6 BARS IN ORDER TO REDUCE THE NUMBER OF DIFFERENT BAR MARKS.

A1 BARS NO. 4		A2 BARS NO. 5		A3 BARS NO. 4 STRAIGHT		A4 BARS NO. 4		A5 BARS NO. 4		A6 BARS NO. 5		A7 BARS NO. 5		A8 BARS NO. 6		A9 BARS NO. 5	
HEIGHT	LENGTH	HEIGHT	LENGTH	HEIGHT	LENGTH	HEIGHT	LENGTH	HEIGHT	LENGTH	HEIGHT	LENGTH	HEIGHT	LENGTH	HEIGHT	LENGTH	HEIGHT	LENGTH
6'-0"	5'-10"	6'-0"	5'-10"	4'-4"	4'-2"	6'-0"	5'-10"	6'-0"	5'-10"	6'-0"	5'-10"	6'-0"	5'-10"	6'-0"	5'-10"	6'-0"	5'-10"
8'-0"	7'-10"	8'-0"	7'-10"	8'-0"	7'-10"	8'-0"	7'-10"	8'-0"	7'-10"	8'-0"	7'-10"	8'-0"	7'-10"	8'-0"	7'-10"	8'-0"	7'-10"
10'-0"	9'-10"	10'-0"	9'-10"	10'-0"	9'-10"	10'-0"	9'-10"	10'-0"	9'-10"	10'-0"	9'-10"	10'-0"	9'-10"	10'-0"	9'-10"	10'-0"	9'-10"
12'-0"	11'-10"	12'-0"	11'-10"	12'-0"	11'-10"	12'-0"	11'-10"	12'-0"	11'-10"	12'-0"	11'-10"	12'-0"	11'-10"	12'-0"	11'-10"	12'-0"	11'-10"
14'-0"	13'-10"	14'-0"	13'-10"	14'-0"	13'-10"	14'-0"	13'-10"	14'-0"	13'-10"	14'-0"	13'-10"	14'-0"	13'-10"	14'-0"	13'-10"	14'-0"	13'-10"



PLAN VIEW OF ADAPTER STEEL LAYOUT

REVISIONS AND CORRECTIONS

DEC. 14, 1971 - ORIGINAL APPROVAL
 AUG. 10, 1981 - REVISED STEP AND ADAPTER DESIGN
 MAR. 23, 1994 - ADDED STEP DETAIL
 JUNE 1, 1994 - REISSUED, WITHOUT CHANGE, UNDER NEW SIGNATURES.
 JAN 3, 2000 - CORRECTED TITLE AND MINOR EDITORIAL CHANGES

APPROVED

[Signature]
 DIRECTOR OF PROJECT DEVELOPMENT
[Signature]
 ROADWAY AND TRAFFIC DESIGN ENGINEER

CONCRETE CATCH BASIN



STANDARD
 D-13