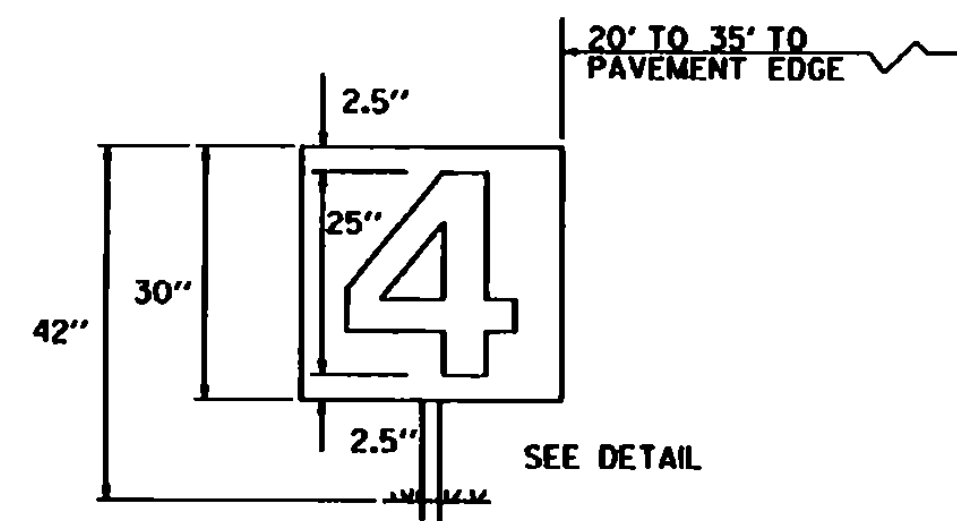
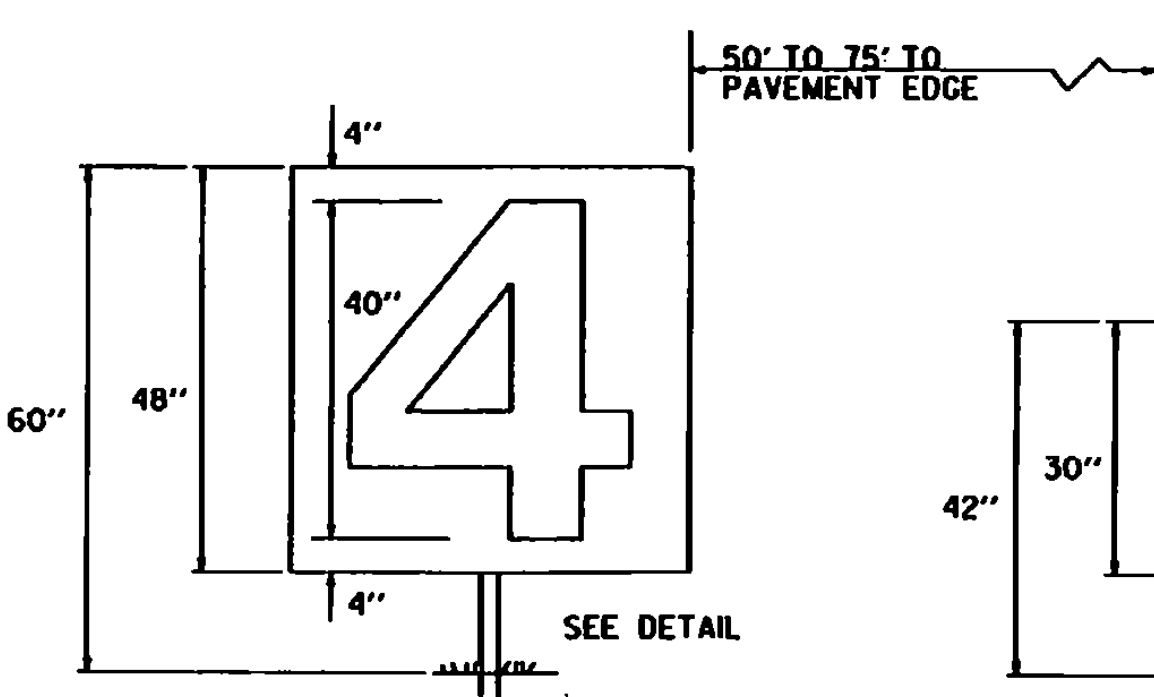


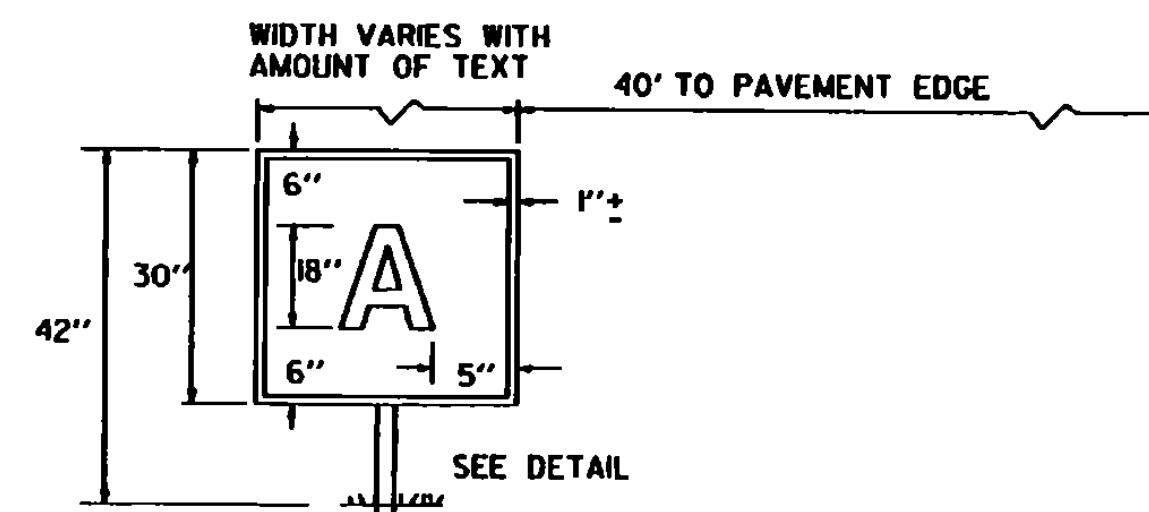
MANDATORY SIGNS

- MANDATORY SIGNS HAVE WHITE INSCRIPTIONS ON A RED BACKGROUND
- SIGNS TO BE LIGHTED WHEN USED ON CERTIFICATED AIRPORTS OR OTHER AIRPORTS HAVING INSTRUMENT OPERATIONS.
- UNLIGHTED, RETROREFLECTIVE SIGNS MAY BE USED AT GENERAL AVIATION AIRPORTS HAVING ONLY VISUAL FLIGHT (VFR) OPERATIONS.



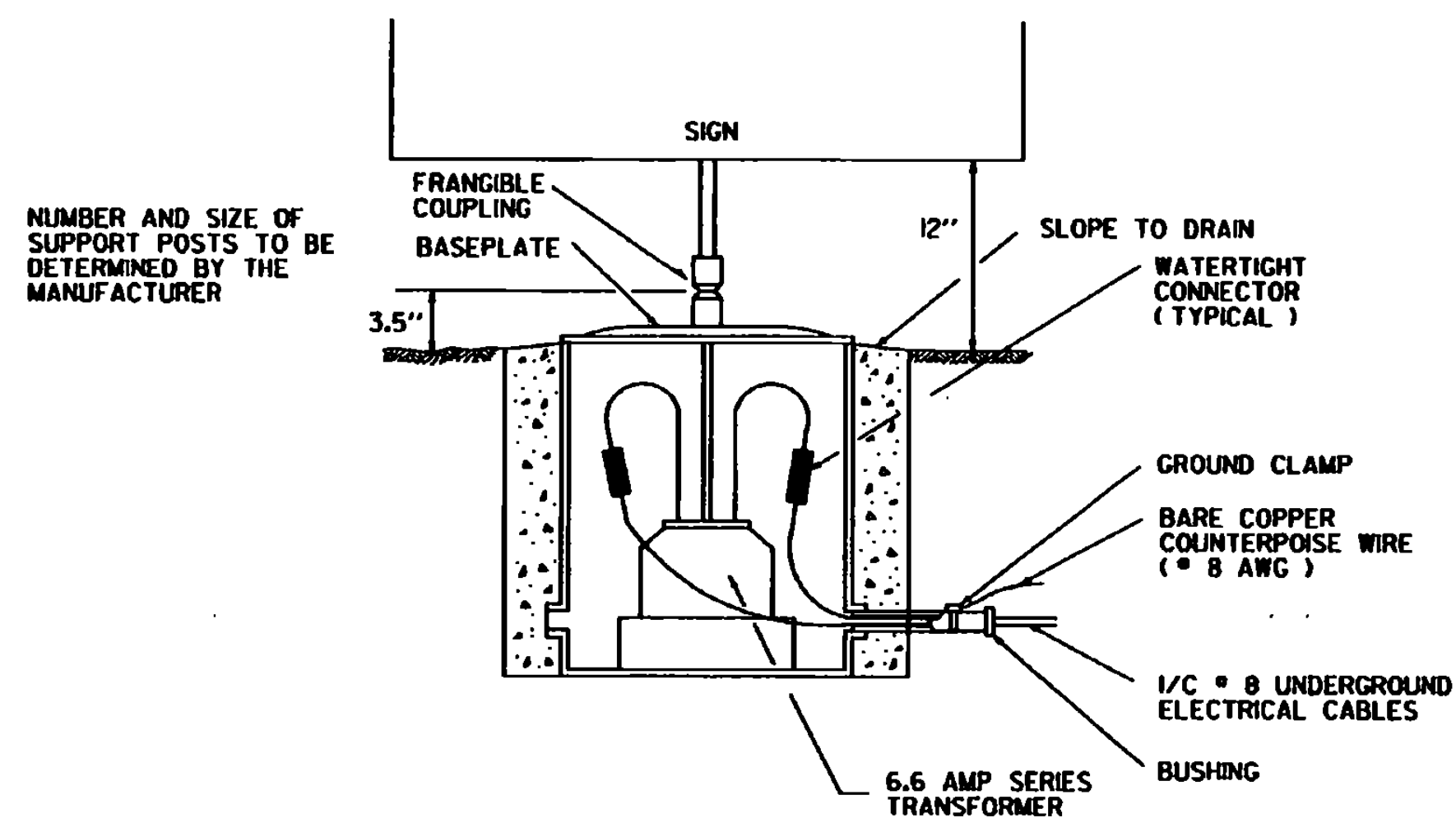
RUNWAY DISTANCE REMAINING SIGNS

- SIGNS HAVE WHITE INSCRIPTIONS ON A BLACK BACKGROUND.
- LARGE SIGNS USED IF PLACED 50 TO 75 FEET FROM PAVEMENT EDGE.
- SMALL SIGNS USED IF PLACED 20 TO 35 FEET FROM PAVEMENT EDGE.
- SIGN SIZE SHOULD BE CONSISTANT ALONG LENGTH OF EACH RUNWAY.
- ONLY LIGHTED SIGNS ARE USED FOR RUNWAY DISTANCE REMAINING SIGNS.
- SIGNS TO BE DOUBLE-SIDED, PREFERABLY LOCATED ON THE LEFT SIDE OF RUNWAY AS VIEWED FROM THE MOST OFTEN USED DIRECTION.

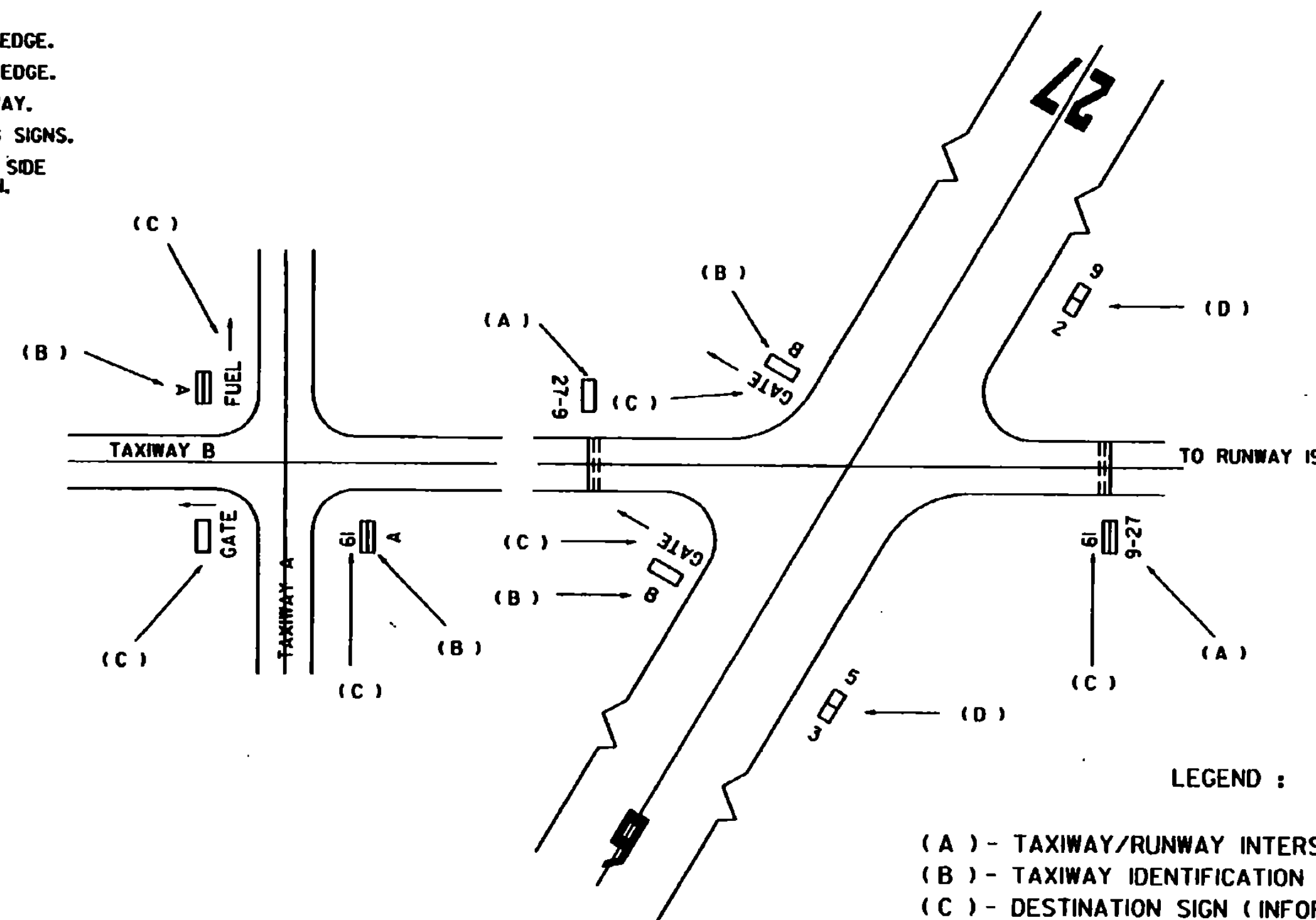


INFORMATION SIGNS

- INFORMATION SIGNS HAVE BLACK INSCRIPTIONS ON A YELLOW BACKGROUND, AND HAVE A BLACK BORDER.



BASE FOR LIGHTED SIGNS
DETAIL



LEGEND :

- (A) - TAXIWAY/RUNWAY INTERSECTION SIGN (MANDATORY TYPE)
- (B) - TAXIWAY IDENTIFICATION SIGN (INFORMATION TYPE)
- (C) - DESTINATION SIGN (INFORMATION TYPE)
- (D) - RUNWAY DISTANCE REMAINING SIGN

TYPICAL SIGN APPLICATIONS

REFER TO CURRENT FAA ADVISORY CIRCULAR .

REVISIONS AND CORRECTIONS

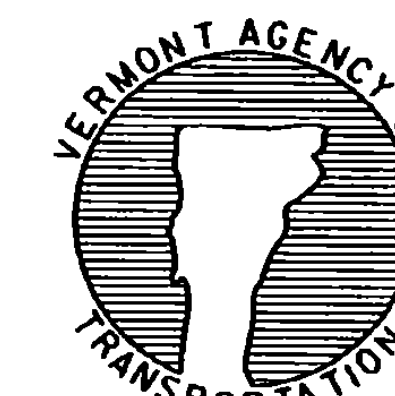
MAR. 1, 1990 - SHEET UPDATED
JUNE 1, 1994 - REISSUED, WITHOUT CHANGE, UNDER NEW SIGNATURE.

APPROVED

APPROVED FOR THIS PROJECT AND/OR DESIGN IMPLEMENTATION. FHWA FINAL APPROVAL PENDING.

W. S. Bump
DIRECTOR OF RAIL, AIR AND PUBLIC TRANSIT

SIGN SYSTEMS



STANDARD
AP-12